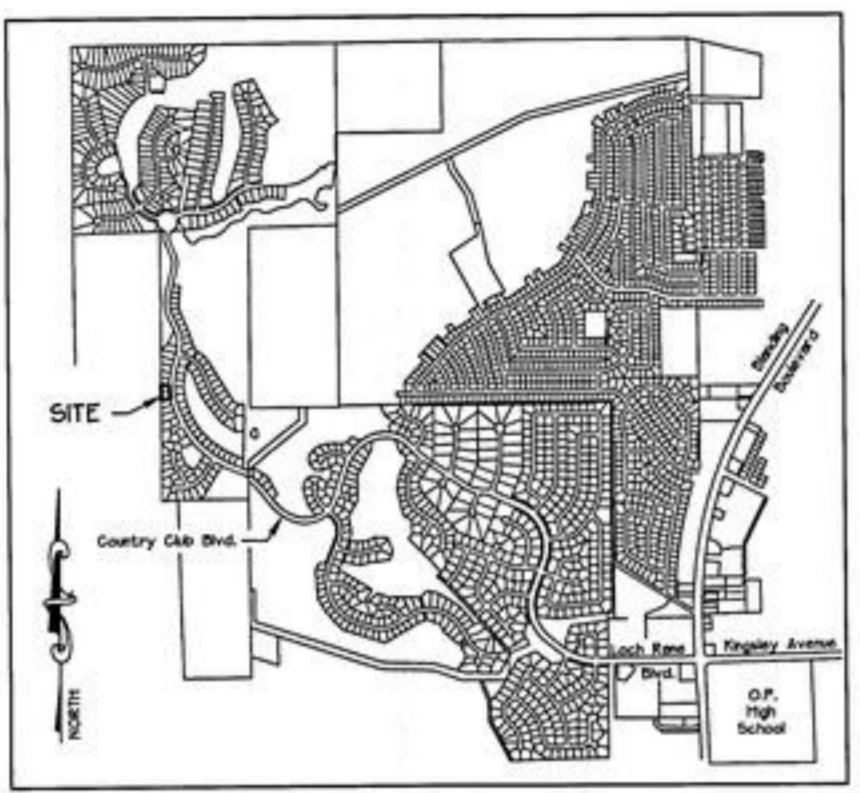


Country Club of Orange Park Unit One-B

A REPLAT OF LOT 287 AND LOT 288, COUNTRY CLUB OF ORANGE PARK UNIT ONE, ACCORDING TO THE PLAT THEREOF AS RECORDED IN PLAT BOOK 21, PAGES 29 THROUGH 40, INCLUSIVE, OF THE PUBLIC RECORDS OF CLAY COUNTY, FLORIDA, AND BEING A PORTION OF THE SOUTHEAST 1/4 OF SECTION 2, TOWNSHIP 4 SOUTH, RANGE 25 EAST OF SAID COUNTY.

ZONING AREA No. LOTS MIN LOT SIZE	"R2" 0.58 AC +/- 1 5,808 Sq. Feet	OWNERS Esta S. Swearingen, Cynthia A. Bennett and William D. Bennett 2659 Country Club Boulevard Orange Park, Florida 32073	SURVEYOR Eland + Associates, Inc. Professional Surveyors + Mappers (LB 1381) 615 Blanding Boulevard Orange Park, Florida 32073
---	--	---	---



VICINITY MAP (Not to Scale)

Electric service provided by Clay Electric Cooperative, Inc.
Water and Sewer service provided by Clay County Utility Authority.

NOTICE:
This plat as recorded in its graphic form is the official depiction of the subdivided lands described herein and will in no circumstances be supplanted in authority by any other graphic or digital form of the plat. There may be additional restrictions that are not recorded on this plat that may be found in the public records of this county.

ADOPTION, DEDICATION AND RESERVATION

This is to certify that Esta S. Swearingen, Cynthia A. Bennett and William D. Bennett are the lawful owners of Country Club of Orange Park Unit One-B as described in the caption hereon and having caused the same to be surveyed and platted and that this plat, made in accordance with said survey, is hereby adopted as the true and correct plat of said Country Club of Orange Park, Unit One-B and that no part of said Country Club of Orange Park Unit One-B is dedicated to Clay County, Florida or to the public.

In witness whereof, Esta S. Swearingen, Cynthia A. Bennett and William D. Bennett have caused these presents to be signed on the date shown below.

<u>Ruth C. Higgins</u> witness	<u>J. Kigg</u> witness	by: <u>Esta S. Swearingen</u> Esta S. Swearingen
<u>Ruth C. Higgins</u> witness	<u>J. Kigg</u> witness	by: <u>Cynthia A. Bennett</u> Cynthia A. Bennett
<u>Ruth C. Higgins</u> witness	<u>J. Kigg</u> witness	by: <u>William D. Bennett</u> William D. Bennett

CAPTION

LOT 287 AND LOT 288, COUNTRY CLUB OF ORANGE PARK UNIT ONE, ACCORDING TO THE PLAT THEREOF AS RECORDED IN PLAT BOOK 21, PAGES 29 THROUGH 40, OF THE PUBLIC RECORDS OF CLAY COUNTY, FLORIDA.

COUNTY DIVISION OF PLANNING + ZONING APPROVAL

Approved this 7th day of June, 2010.

Mark Wood
Director, Division of Planning + Zoning

COUNTY ENGINEER APPROVAL

Approved this 7th day of June, 2010.

C. C. T. V.
County Engineer

COUNTY COMMISSIONERS' APPROVAL

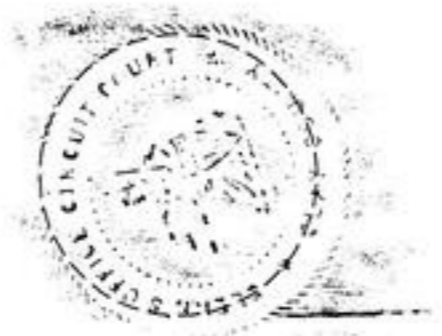
Examined and approved this 17th day of May, 2010, by the Board of County Commissioners, Clay County, Florida.

J. K. Bell Clerk of the Board
W. D. Bennett Chairman of the Board

CLERK'S CERTIFICATE

I hereby certify that this plat was filed on the 11th day of June, 2010 in Plat Book 54, pages 55 and 56.

James B. Ford
Clerk of the Circuit Court



STATE OF FLORIDA, COUNTY OF CLAY

The foregoing instrument was acknowledged before me this 27th day of May, 2010, by Esta S. Swearingen, Cynthia A. Bennett and William D. Bennett.

Ruth C. Higgins
Notary Public, State of Florida

