

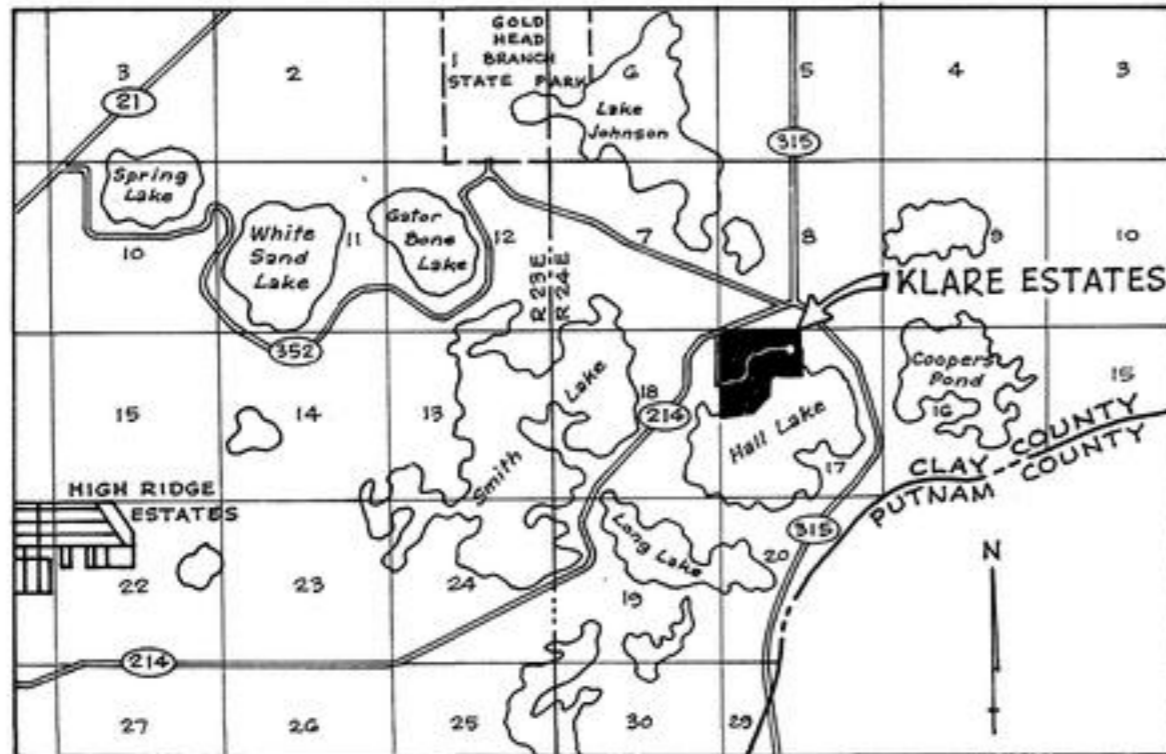
KLARE ESTATES CLAY COUNTY, FLORIDA

PLAT BOOK 12 PAGE 48
SHEET 1 OF 4 SHEETS

CAPTION

A subdivision of a portion of the Northwest one-quarter of Section 17 together with a portion of the East 1/2 of the Northeast 1/4 of Section 18, all in Township 8 South, Range 24 East, Clay County, Florida, being more particularly described as follows:

Commence at the northwest corner of said Section 17; thence South 89 degrees 36 minutes 00 seconds East 229.38 feet to the southeasterly line of State Road N^o S-214 and the point of beginning; thence continue South 89 degrees 36 minutes 00 seconds East 2,410.38 feet; thence South 00 degrees 25 minutes 12 seconds East 468.58 feet; thence South 88 degrees 49 minutes 30 seconds East 16.15 feet; thence South 00 degrees 25 minutes 12 seconds East 764.67 feet; thence North 85 degrees 26 minutes 12 seconds West 702.53 feet; thence North 68 degrees 37 minutes 31 seconds West 122.61 feet; thence South 62 degrees 03 minutes 52 seconds West 57.49 feet; thence South 06 degrees 23 minutes 01 second West 577.90 feet; thence South 34 degrees 59 minutes 40 seconds West 601.14 feet; thence South 55 degrees 08 minutes 07 seconds West 452.12 feet; thence South 73 degrees 00 minutes 24 seconds West 1,069.06 feet to the west line of said Section 17; thence on last said line North 00 degrees 03 minutes 20 seconds East 1,046.00 feet; thence North 88 degrees 41 minutes 40 seconds West 20.01 feet; thence North 00 degrees 03 minutes 20 seconds East 1,672.74 feet to said southeasterly line of State Road N^o S-214; thence on last said line North 69 degrees 06 minutes 44 seconds East 267.02 feet to said point of beginning.



VICINITY MAP
SCALE: 1" = 1 MILE

ADOPTION AND DEDICATION

This is to certify that the undersigned are lawful owners of Klare Estates as described in the caption hereon and that they have caused the same to be surveyed and subdivided and that this plat, made in accordance with said survey, is hereby adopted as the true and correct plat of said lands and that all streets and easements for drainage and utilities shown on said plat are hereby irrevocably and without reservation dedicated to Clay County and its successors.

In witness whereof, this adoption and dedication has been signed and sealed this 12th day of Sept, A.D. 1974.

Anna R. Paul
Witness as to Corporation

Rachel Creed
Witness as to Corporation

Vernie F. Lane
Witness as to Individual

Elizabeth D. Cruise
Witness as to Individual

Lake Klare Estates, Inc., a corporation under the Laws of the State of Florida.

Paul E. Reinhold
Paul E. Reinhold, President

Gomer Cullifer
Gomer Cullifer, Secretary

Justin C. Montgomery
Justin C. Montgomery

STATE OF FLORIDA - COUNTY OF CLAY

The foregoing instrument was acknowledged before me this 12th day of SEPTEMBER, A.D. 1974 by Paul E. Reinhold and Gomer Cullifer, President and Secretary, respectively, of Lake Klare Estates, Inc., a corporation under the Laws of the State of Florida, on behalf of said corporation, and individually by Justin C. Montgomery.

John H. Roana
Notary Public, State of Florida at-large

July 19, 1975
My commission expires

SURVEYORS CERTIFICATE

This is to certify that the accompanying plat is a correct representation of the lands surveyed, platted and described hereon, that Permanent Reference Monuments have been placed as shown on said plat according to Chapter N^o 71-339, Laws of Florida of 1971 and that Permanent Control Points will be set as shown on said plat in accordance with said Laws, that said survey was made under my responsible direction and supervision and that the survey data shown on said plat complies with all the requirements of said Chapter.

Signed this 2nd day of Sept, A.D. 1974.

Louis H. Mc Kee
Louis H. Mc Kee, Reg. Surveyor
Florida Certificate No. 1221
Orange Park, Florida

COUNTY ZONING BOARD APPROVAL

Approved this 11th day of Sept, A.D. 1974.

Joseph K. Cooper
Vice Chairman

COUNTY COMMISSIONERS CERTIFICATE

Examined and approved this 24 day of SEPT, A.D. 1974 by the Board of County Commissioners, Clay County, Florida.

George L. Carlisle
Clerk of the Circuit Court

Chairman

COUNTY ENGINEERS APPROVAL

Approved this 23 day of September, A.D. 1974

John W. Bowles
ACTING County Engineer

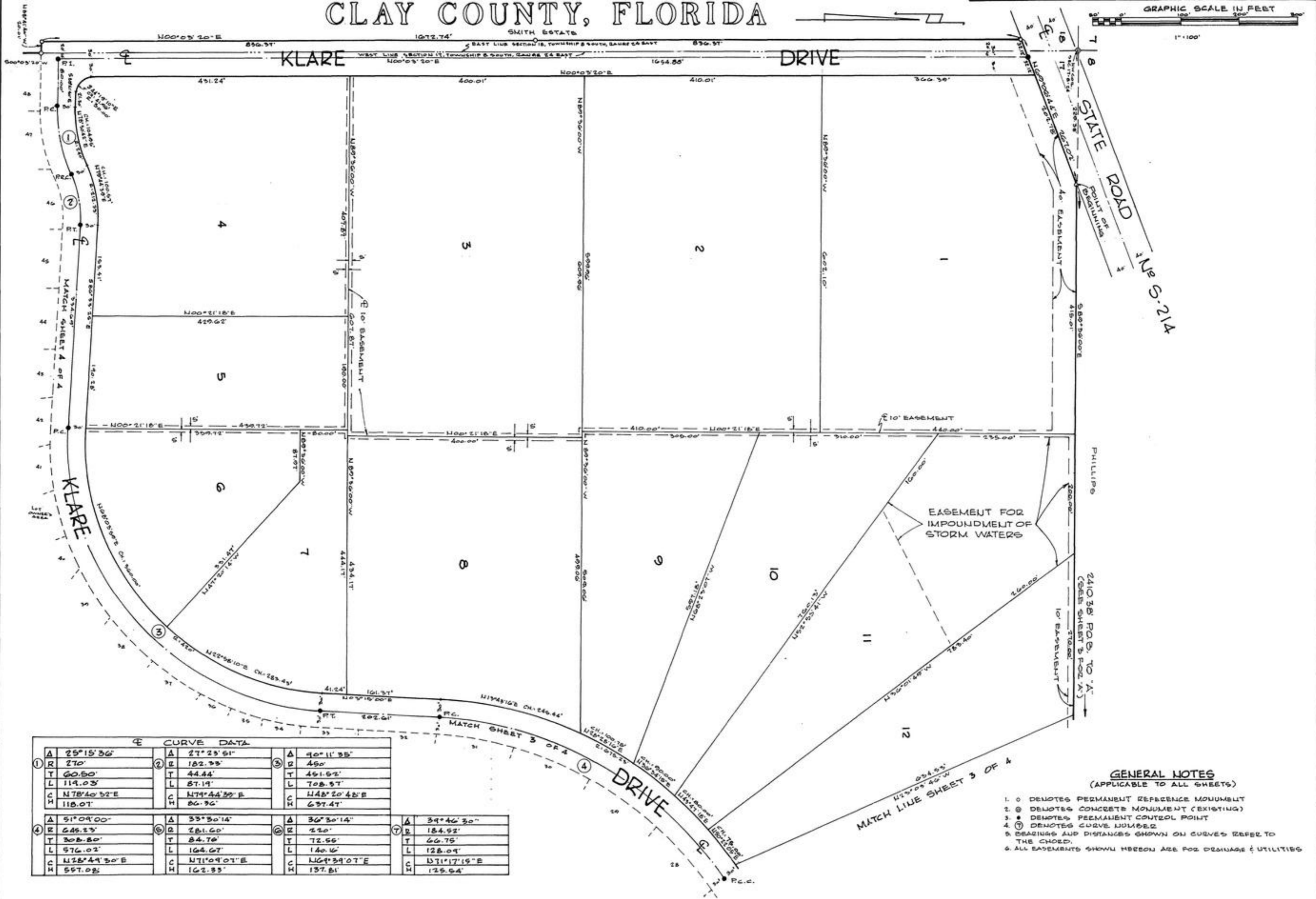
CLERKS CERTIFICATE

I hereby certify that this plat has been examined and that it complies in form with Chapter, N^o 71-339, Laws of Florida of 1971 and is filed for record in Plat Book 12, pages 48-49-50-51 of the public records of Clay County, Florida this 24 day of SEPT, A.D. 1974.

George L. Carlisle
Clerk of the Circuit Court

KLARE ESTATES CLAY COUNTY, FLORIDA

PLAT BOOK 12 PAGE 49
SHEET 2 OF 4 SHEETS

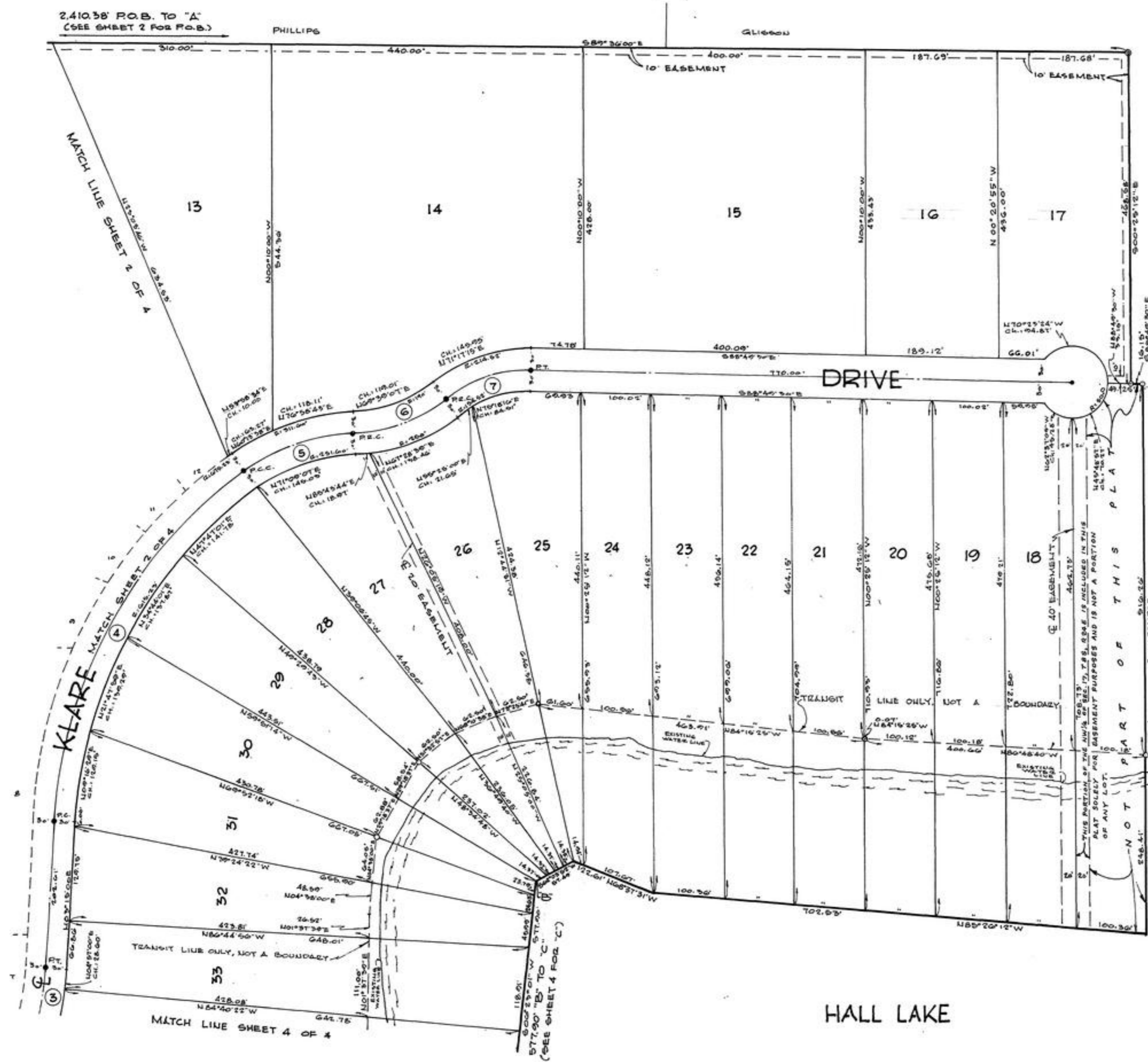


CURVE DATA			
①	Δ 25°15'36"	②	Δ 27°25'51"
R 270'	T 182.93'	③	Δ 40°11'35"
L 60.50'	T 44.44'	R 450'	T 451.52'
L 114.03'	L 87.19'	L 708.57'	T 708.57'
C N78°40'52"E	C N71°44'30"E	C N48°20'42"E	T 697.47'
H 118.07'	H 86.76'	C H 697.47'	
④	Δ 51°09'00"	⑤	Δ 33°30'14"
R 645.23'	R 281.60'	⑥	Δ 36°30'14"
L 308.80'	T 84.76'	R 220'	T 184.92'
L 576.02'	L 164.67'	L 72.56'	T 66.75'
C N28°44'30"E	C N71°09'07"E	C N69°29'07"E	L 128.09'
H 597.08'	H 162.33'	C H 137.81'	T 137.81'
		C H 129.94'	

- GENERAL NOTES**
(APPLICABLE TO ALL SHEETS)
1. ○ DENOTES PERMANENT REFERENCE MONUMENT
 2. ⊙ DENOTES CONCRETE MONUMENT (EXISTING)
 3. ● DENOTES PERMANENT CONTROL POINT
 4. ⊕ DENOTES CURVE NUMBER
 5. BEARINGS AND DISTANCES SHOWN ON CURVES REFER TO THE CHORD.
 6. ALL EASEMENTS SHOWN HEREON ARE FOR DEMIURGE & UTILITIES

KLARE ESTATES CLAY COUNTY, FLORIDA

PLAT BOOK 12 PAGE 50
SHEET 3 OF 4 SHEETS



CURVE DATA			
Δ	90°11'35"	Δ	36°30'14"
R	450'	E	220'
T	451.52'	T	72.65'
L	708.37'	L	140.16'
HC	148°20'48"E	HC	168°39'07"E
XC	637.47'	HC	137.81'
Δ	51°09'00"	Δ	39°46'30"
R	648.23'	E	184.52'
T	308.80'	T	62.15'
L	576.02'	L	128.00'
HC	1128°49'30"E	HC	171°17'15"E
XC	557.08'	HC	125.54'
Δ	33°30'14"		
R	281.60'		
T	84.76'		
L	164.67'		
HC	171°09'07"E		
XC	162.33'		

