

**PARADISE MOORINGS** A PART OF SECTION 36, AND A.E. FERGUSON'S HEIRS, SECTION 41, TOWNSHIP 4 SOUTH, RANGE 25 EAST, CLAY COUNTY, FLORIDA, AND BEING A REPLAT OF PART OF LOTS 3 AND 4, DOCTORS INLET FARMS, AS RECORDED IN PLAT BOOK 2, PAGE 17, PUBLIC RECORDS OF CLAY COUNTY, FLORIDA

**CAPTION**

A PART OF LOTS 3 AND 4, BLOCK 4, AS SHOWN ON THE MAP OF DOCTORS INLET FARMS, AS RECORDED IN PLAT BOOK 2, PAGE 17 OF THE PUBLIC RECORDS OF CLAY COUNTY, FLORIDA, BEING MORE PARTICULARLY DESCRIBED AS FOLLOWS:

FOR A POINT OF REFERENCE COMMENCE AT THE INTERSECTION OF THE WEST LINE OF THE EAST 1/2 OF SAID LOT 3, DOCTORS INLET FARMS (ALSO BEING THE WEST LINE OF LANDS DESCRIBED IN OFFICIAL RECORDS BOOK 1867, PAGE 256 OF THE PUBLIC RECORDS OF SAID COUNTY) WITH THE NORTHERLY RIGHT OF WAY LINE OF COUNTY ROAD NO. 220 (A VARIABLE WIDTH RIGHT OF WAY) AND RUN NORTH 89° 05' 30" EAST, ALONG SAID NORTHERLY RIGHT OF WAY LINE, 138.53 FEET TO A POINT ON THE EAST LINE OF SAID OFFICIAL RECORDS BOOK 1867, PAGE 256 FOR THE POINT OF BEGINNING.

FROM THE POINT OF BEGINNING THUS DESCRIBED RUN NORTH 00° 02' 28" EAST, ALONG LAST SAID LINE AND THE NORTHERLY PROLONGATION THEREOF, 489.26 FEET; THENCE NORTH 89° 42' 37" WEST, 138.49 FEET TO A POINT ON THE PREVIOUSLY MENTIONED WEST LINE OF THE EAST 1/2 OF LOT 3, DOCTORS INLET FARMS; THENCE NORTH 00° 02' 29" EAST, ALONG LAST SAID LINE, 1,122.48 FEET TO ITS INTERSECTION WITH THE MEAN HIGH WATER LINE OF DOCTORS LAKE AS ESTABLISHED AT AN ELEVATION 1.23 FEET, AS PER LETTER FROM THE DEPARTMENT OF ENVIRONMENTAL PROTECTION DATED JUNE 22, 2000; THENCE EASTERLY ALONG SAID MEAN HIGH WATER LINE THE FOLLOWING SIXTEEN (16) COURSES AND DISTANCES: 1ST COURSE, SOUTH 87° 40' 17" EAST, 162.19 FEET; 2ND COURSE, NORTH 70° 05' 26" EAST, 68.88 FEET; 3RD COURSE, NORTH 75° 34' 37" EAST, 137.98 FEET; 4TH COURSE, SOUTH 74° 29' 59" EAST, 97.39 FEET; 5TH COURSE, SOUTH 84° 11' 44" EAST, 59.28 FEET; 6TH COURSE, SOUTH 81° 08' 24" EAST, 129.25 FEET; 7TH COURSE, SOUTH 86° 06' 14" EAST, 89.26 FEET; 8TH COURSE, SOUTH 80° 47' 30" EAST, 87.16 FEET; 9TH COURSE, NORTH 89° 37' 24" EAST, 85.35 FEET; 10TH COURSE, SOUTH 83° 05' 05" EAST, 89.43 FEET; 11TH COURSE, SOUTH 86° 22' 48" EAST, 90.07 FEET; 12TH COURSE, SOUTH 88° 25' 59" EAST, 109.02 FEET; 13TH COURSE, SOUTH 84° 13' 46" EAST, 46.01 FEET; 14TH COURSE, SOUTH 85° 10' 37" EAST, 72.86 FEET; 15TH COURSE, NORTH 76° 17' 36" EAST, 93.19 FEET; 16TH COURSE, SOUTH 80° 12' 10" EAST, 32.21 FEET TO ITS INTERSECTION WITH THE EASTERLY LINE OF LANDS DESCRIBED IN OFFICIAL RECORDS BOOK 183, PAGE 46, PUBLIC RECORDS OF SAID COUNTY; THENCE SOUTHERLY ALONG LAST SAID EASTERLY LINE THE FOLLOWING TEN (10) COURSES AND DISTANCES: 1ST COURSE, SOUTH 35° 12' 30" WEST, 52.76 FEET; 2ND COURSE, SOUTH 49° 54' 30" WEST, 34.87 FEET; 3RD COURSE, SOUTH 17° 06' 30" WEST, 84.00 FEET; 4TH COURSE, SOUTH 12° 20' 30" WEST, 114.00 FEET; 5TH COURSE, SOUTH 06° 54' 50" WEST, 147.00 FEET; 6TH COURSE, SOUTH 04° 23' 30" EAST, 560.00 FEET; 7TH COURSE, SOUTH 01° 58' 12" WEST, 117.10 FEET; 8TH COURSE, NORTH 88° 01' 48" WEST, 20.00 FEET; 9TH COURSE, SOUTH 01° 58' 12" WEST, 5.38 FEET; 10TH COURSE, SOUTH 22° 07' 12" WEST, 532.24 FEET TO A POINT ON A CURVE IN THE PREVIOUSLY MENTIONED NORTHERLY RIGHT OF WAY LINE OF COUNTY ROAD NO. C-220; RUN THENCE IN A WESTERLY DIRECTION ALONG THE ARC OF A CURVE, SAID CURVE BEING CONCAVE SOUTHERLY AND HAVING A RADIUS OF 1,204.92 FEET, AN ARC DISTANCE OF 62.69 FEET TO A POINT OF TANGENCY OF SAID CURVE, SAID ARC BEING SUBTENDED BY A CHORD BEARING AND DISTANCE OF NORTH 88° 25' 36" WEST, 62.69 FEET; THENCE RUN THE FOLLOWING FOUR (4) COURSES AND DISTANCES CONTINUING ALONG SAID NORTHERLY RIGHT OF WAY LINE OF COUNTY ROAD NO. C-220: 1ST COURSE, NORTH 89° 55' 00" WEST, 406.15 FEET; 2ND COURSE, SOUTH 89° 05' 30" WEST, 161.18 FEET; 3RD COURSE, NORTH 00° 05' 00" EAST, 3.48 FEET; 4TH COURSE, SOUTH 89° 05' 30" WEST, 356.90 FEET TO THE POINT OF BEGINNING.

CONTAINING 46.32 ACRES, MORE OR LESS.

**SUBDIVISION IMPROVEMENT GUARANTEE**

AS A CONDITION PRECEDENT TO THE RECORDATION OF THIS PLAT IN THE PUBLIC RECORDS OF CLAY COUNTY, FLORIDA, THE UNDERSIGNED OWNER OF THIS SUBDIVISION DOES HEREBY GUARANTEE TO EACH AND EVERY PERSON, FIRM, COPARTNERSHIP OR CORPORATION, THEIR HEIRS, SUCCESSORS AND ASSIGNS, WHO SHALL PURCHASE A LOT OR LOTS IN SAID SUBDIVISION FROM SAID OWNER, THAT SAID OWNER SHALL WITHIN 12 MONTHS OF THE DATE OF ACCEPTANCE OF THE STREET AND DRAINAGE IMPROVEMENTS BY THE BOARD OF COUNTY COMMISSIONERS THEREOF FULLY COMPLY WITH EACH AND EVERY REGULATION OF THE BOARD OF COUNTY COMMISSIONERS OF CLAY COUNTY, FLORIDA, COVERING SUBDIVISIONS IN EFFECT AT THE TIME OF THE FILING OF THIS FINAL PLAT INSOFAR AS THE SAME EFFECTS A LOT OR LOTS SOLD.

TIME OF SUCH PERFORMANCE BEING OF THE ESSENCE, SAID GUARANTEE SHALL BE PART OF EACH DEED OF CONVEYANCE OR CONTRACT OF SALE COVERING LOTS IN SAID SUBDIVISION, EXECUTED BY SAID OWNER TO THE SAME EXTENT AND PURPOSE AS IF SAID GUARANTEE WERE INCORPORATED VERBATIM IN EACH SAID CONVEYANCE OR CONTRACT OF SALE.

BY: BESTCON, INC., A FLORIDA CORPORATION

*Philip Haddock*  
WITNESS

PHILIP HADDOCK  
PRINT NAME

*Paul W. Nichols*  
BY: PAUL W. NICHOLS  
ITS PRESIDENT

*Karen L Beck*  
WITNESS

Karen L Beck  
PRINT NAME

**SURVEYOR'S CERTIFICATE**

THIS IS TO CERTIFY THAT THE UNDERSIGNED IS A CURRENTLY LICENSED AND REGISTERED LAND SURVEYOR IN AND BY THE STATE OF FLORIDA AND AS SUCH DOES HEREBY CERTIFY THAT THIS PLAT IS A TRUE AND CORRECT REPRESENTATION OF THE LANDS SURVEYED UNDER HIS RESPONSIBLE DIRECTION AND SUPERVISION AND THAT THE SURVEY DATA COMPLIES WITH ALL REQUIREMENTS OF CHAPTER 177, FLORIDA STATUTES, AND FURTHER CERTIFIES THAT PERMANENT REFERENCE MONUMENTS HAVE BEEN SET AND THAT PERMANENT CONTROL POINTS WILL BE SET ACCORDING TO THE REQUIREMENTS OF SAID CHAPTER 177. SIGNED THIS 14<sup>th</sup> DAY OF MAY A.D., 2003.

RICHARD P. CLARSON & ASSOCIATES, INC. (LB 1704)  
1643 NALDO AVENUE  
JACKSONVILLE, FLORIDA 32207  
PHONE: (904) 396 2623

BY: *Jose A. Hill, Jr.*  
JOSE A. HILL, JR.  
REGISTERED LAND SURVEYOR  
NO. 4487, STATE OF FLORIDA



**COUNTY DEPARTMENT OF ZONING APPROVAL**

APPROVED THIS 28<sup>th</sup> DAY OF May, 2003.

*Shayla C. ...*  
DIRECTOR, DEPARTMENT OF ZONING

**COUNTY COMMISSIONERS' APPROVAL**

EXAMINED AND APPROVED THIS 5<sup>th</sup> DAY OF June, A.D., 2003 BY THE BOARD OF COUNTY COMMISSIONERS, CLAY COUNTY, FLORIDA.

*Joseph ...*  
CHAIRMAN

*Robert ...*  
CLERK OF THE BOARD

**CLERK'S CERTIFICATE**

I HEREBY CERTIFY THAT THIS PLAT HAS BEEN EXAMINED AND IT COMPLIES IN FORM WITH CHAPTER 177, FLORIDA STATUTES, AND IS FILED FOR RECORD IN PLAT BOOK 41, PAGES 32 THROUGH 38, OF THE PUBLIC RECORDS OF CLAY COUNTY, FLORIDA, THIS 10<sup>th</sup> DAY OF JUNE, 2003.

*James B. ...*  
CLERK OF THE CIRCUIT COURT

**COUNTY DEPARTMENT OF ENGINEERING APPROVAL**

APPROVED THIS 28<sup>th</sup> DAY OF May, 2003.

*Cheryl ...*  
DIRECTOR, DEPARTMENT OF ENGINEERING

**COUNTY DEPARTMENT OF PLANNING APPROVAL**

APPROVED THIS 3<sup>rd</sup> DAY OF June, 2003.

*Phil ...*  
DIRECTOR, DEPARTMENT OF PLANNING

**SURVEYOR'S CERTIFICATE OF REVIEW**

THE UNDERSIGNED SURVEYOR HEREBY CERTIFIES THAT HE HAS BEEN RETAINED BY CLAY COUNTY TO REVIEW THIS PLAT ON BEHALF OF CLAY COUNTY, FLORIDA, IN ACCORDANCE WITH THE REQUIREMENTS OF SECTION 177.081 (1), FLORIDA STATUTES (1999), AND HAS DETERMINED THAT SAID PLAT CONFORMS WITH REQUIREMENTS OF CHAPTER 177, FLORIDA STATUTES. THE UNDERSIGNED DID NOT PREPARE THIS PLAT. THIS CERTIFICATE IS MADE AS OF THE 15<sup>th</sup> DAY OF May, 2003.

SIGNED: *B.L. Pittman*  
PRINT NAME: B.L. Pittman

FLORIDA REGISTRATION NO. 4827  
PRINT ADDRESS: 90 RIVER ROAD  
ORANGE PARK FL 32073

**TYPE II SUBDIVISION "PUD" ZONING (PLANNED COMMUNITY)**

**OWNER**  
BESTCON, INC.  
1484 LAUREL WAY  
ATLANTIC BEACH, FLORIDA, 32233

**ENGINEER**  
J. LUCAS & ASSOCIATES  
1305 CEDAR STREET  
JACKSONVILLE, FLORIDA, 32207

**LAND USE**

ZONING: PUD  
AREA: 46.32 ACRES  
TOTAL LOTS: 92

ELECTRIC SERVICE PROVIDED BY CLAY ELECTRIC COOPERATIVE, INC.  
WATER AND SEWER SERVICE PROVIDED BY CLAY COUNTY UTILITY AUTHORITY

PREPARED BY:  
**CLARSON AND ASSOCIATES, INC.**  
PROFESSIONAL LAND SURVEYORS  
1643 NALDO AVENUE  
JACKSONVILLE, FLORIDA, 32207  
PHONE: 904-396-2623

# PARADISE MOORINGS A PART OF SECTION 36, AND A.E.

FERGUSON'S HEIRS, SECTION 4, TOWNSHIP 4 SOUTH, RANGE 25 EAST, CLAY COUNTY, FLORIDA, AND BEING A REPLAT OF PART OF LOTS 3 AND 4, BLOCK 4, DOCTORS INLET FARMS, AS RECORDED IN PLAT BOOK 2, PAGE 17, PUBLIC RECORDS OF CLAY COUNTY, FLORIDA

### ADOPTION AND DEDICATION

THIS IS TO CERTIFY THAT BESTCON, INC., BESTCON OF JACKSONVILLE, INC., C.R. ROSEWOOD HOMES, INC., J.A. LONG, INC., AND SID HIGGINBOTHAM BUILDER, INC., FLORIDA CORPORATIONS ARE THE LAWFUL OWNERS OF THE ABOVE CAPTIONED LANDS, HENCEFORTH TO BE KNOWN AS PARADISE MOORINGS AND IS HEREBY ADOPTED AS THE TRUE AND CORRECT PLAT OF SAID LANDS. NO PART OF SAID LANDS IS DEDICATED TO THE COUNTY OF CLAY, STATE OF FLORIDA, OR TO THE PUBLIC. ALL OF THE PROPERTY DESIGNATED ON THIS PLAT AS CIRCLES, BOULEVARD, RIGHTS-OF-WAY, TRACTS AND EASEMENTS, EXCEPT C.E.C. AND C.C.U.A. EASEMENTS ARE AND SHALL REMAIN PRIVATELY OWNED AND THE SOLE EXCLUSIVE PROPERTY OF BESTCON, INC., ITS SUCCESSORS, OR ASSIGNS.

BESTCON, INC. DOES HEREBY GRANT TO THE PRESENT AND FUTURE OWNERS OF THE LOTS SHOWN ON THIS PLAT AND THEIR GUESTS, INVITEES, DOMESTIC HELP, DELIVERY, PICK-UP, FIRE PROTECTION SERVICES, POLICE AND OTHER AUTHORITIES OF THE LAW, UNITED STATES MAIL CARRIERS, REPRESENTATIVES OF THE UTILITIES AUTHORIZED BY BESTCON, INC., TO SERVE THE LAND SHOWN HEREON, HOLDERS OF MORTGAGE LIENS ON SUCH LANDS AND SUCH OTHER PERSONS AS BESTCON INC. MAY FROM TIME TO TIME DESIGNATE THE NON-EXCLUSIVE AND PERPETUAL RIGHT OF INGRESS AND EGRESS OVER AND ACROSS SAID PRIVATE ROADWAYS. REGARDLESS OF THE PRECEDING PROVISION, BESTCON, INC. HEREBY RESERVES AND SHALL HAVE THE UNRESTRICTED AND ABSOLUTE RIGHT TO DENY INGRESS TO ANY PERSON, WHO IN THE OPINION OF BESTCON, INC. MAY CREATE OR PARTICIPATE IN A DISTURBANCE OF NUISANCE ON ANY PART OF THE LANDS SHOWN HEREON. BESTCON, INC. HEREBY RESERVES AND SHALL HAVE THE SOLE AND ABSOLUTE RIGHT AT ANY TIME, WITH THE CONSENT OF THE GOVERNING BODY OR ANY MUNICIPALITY OR OTHER GOVERNMENTAL BODY POLITICAL THEN HAVING JURISDICTION OVER THE LANDS SHOWN HEREON, TO DEDICATE TO THE PUBLIC ALL OR ANY PART OF THE LANDS ON THIS PLAT DESIGNATED AS CIRCLES, BOULEVARD, RIGHTS-OF-WAY, TRACTS, AND EASEMENTS, EXCEPT C.E.C. AND C.C.U.A. EASEMENTS.

C.C.U.A. UTILITY EASEMENTS AND EASEMENTS FOR SERVICE AND MAINTENANCE OF THE WATER AND SANITARY SEWER SYSTEMS WITHIN THE PRIVATE ROADWAYS ARE HEREBY IRREVOCABLY AND WITHOUT RESERVATION DEDICATED TO THE CLAY COUNTY UTILITY AUTHORITY, ITS SUCCESSORS AND ASSIGNS.

C.E.C. EASEMENTS ARE DEDICATED TO THE CLAY ELECTRIC COOPERATIVE, INC., AND ITS SUCCESSORS IN TITLE, FOR USE IN ITS UNDERGROUND ELECTRICAL DISTRIBUTION SYSTEM.

IN WITNESS WHEREOF, BESTCON, INC., A FLORIDA CORPORATION AUTHORIZED TO DO BUSINESS IN THE STATE OF FLORIDA, HAS CAUSED THESE PRESENTS TO BE SIGNED BY PAUL W. NICHOLS, ITS PRESIDENT, BY AND WITH THE AUTHORITY OF THE BOARD OF DIRECTORS IN ITS NAME AND WITH ITS CORPORATE SEAL, AFFIXED THIS 6<sup>th</sup> DAY OF MAY A.D., 2003

BY: BESTCON, INC., A FLORIDA CORPORATION  
WITNESS: HC Fairbrother PRINT NAME  
BY: Paul W. Nichols PRINT NAME  
ITS PRESIDENT

### STATE OF FLORIDA COUNTY OF DUVAL

THE FOREGOING INSTRUMENT WAS ACKNOWLEDGED BEFORE ME THIS 6<sup>th</sup> DAY OF May A.D., 2003, BY PAUL W. NICHOLS, PRESIDENT OF BESTCON, INC., A FLORIDA CORPORATION, ON BEHALF OF SAID CORPORATION, HE IS PERSONALLY KNOWN TO ME OR HAS PRODUCED Paul W. Nichols AS IDENTIFICATION.

WITNESS: Karen L Beck PRINT NAME  
BY: Karen L Beck PRINT NAME  
NOTARY PUBLIC, STATE OF FLORIDA  
COMMISSION NO. DD092737  
MY COMMISSION EXPIRES:

IN WITNESS WHEREOF, BESTCON OF JACKSONVILLE, INC., A FLORIDA CORPORATION AUTHORIZED TO DO BUSINESS IN THE STATE OF FLORIDA, HAS CAUSED THESE PRESENTS TO BE SIGNED BY ITS PRESIDENT, BY AND WITH THE AUTHORITY OF THE BOARD OF DIRECTORS IN ITS NAME AND WITH ITS CORPORATE SEAL, AFFIXED THIS 6<sup>th</sup> DAY OF MAY A.D., 2003

BY: BESTCON OF JACKSONVILLE, INC., A FLORIDA CORPORATION  
WITNESS: A.C. Fairbrother PRINT NAME  
BY: Paul W. Nichols PRINT NAME  
ITS PRESIDENT

### STATE OF FLORIDA COUNTY OF DUVAL

THE FOREGOING INSTRUMENT WAS ACKNOWLEDGED BEFORE ME THIS 6<sup>th</sup> DAY OF May A.D., 2003, BY PAUL W. NICHOLS, AS PRESIDENT OF BESTCON OF JACKSONVILLE, INC., A FLORIDA CORPORATION, ON BEHALF OF SAID CORPORATION, HE IS PERSONALLY KNOWN TO ME OR HAS PRODUCED Paul W. Nichols AS IDENTIFICATION.

WITNESS: Karen L Beck PRINT NAME  
BY: Karen L Beck PRINT NAME  
NOTARY PUBLIC, STATE OF FLORIDA  
COMMISSION NO. DD092737  
MY COMMISSION EXPIRES:

IN WITNESS WHEREOF, C.R. ROSEWOOD HOMES, INC., A FLORIDA CORPORATION AUTHORIZED TO DO BUSINESS IN THE STATE OF FLORIDA, HAS CAUSED THESE PRESENTS TO BE SIGNED BY ROGER DAY, ITS PRESIDENT, BY AND WITH THE AUTHORITY OF THE BOARD OF DIRECTORS IN ITS NAME AND WITH ITS CORPORATE SEAL, AFFIXED THIS 6<sup>th</sup> DAY OF MAY A.D., 2003

C.R. ROSEWOOD HOMES, INC., A FLORIDA CORPORATION  
WITNESS: Viola Wilson PRINT NAME  
BY: Roger Day PRINT NAME  
ITS PRESIDENT

### STATE OF FLORIDA COUNTY OF CLAY

THE FOREGOING INSTRUMENT WAS ACKNOWLEDGED BEFORE ME THIS 6<sup>th</sup> DAY OF May A.D., 2003, BY JOHN A. LONG, AS PRESIDENT OF C.R. ROSEWOOD HOMES, INC., A FLORIDA CORPORATION, ON BEHALF OF SAID CORPORATION, HE IS PERSONALLY KNOWN TO ME OR HAS PRODUCED John A. Long AS IDENTIFICATION.

WITNESS: Karen L Beck PRINT NAME  
BY: Karen L Beck PRINT NAME  
NOTARY PUBLIC, STATE OF FLORIDA  
COMMISSION NO. DD092737  
MY COMMISSION EXPIRES:

IN WITNESS WHEREOF, J.A. LONG, INC., A FLORIDA CORPORATION AUTHORIZED TO DO BUSINESS IN THE STATE OF FLORIDA, HAS CAUSED THESE PRESENTS TO BE SIGNED BY JOHN A. LONG, ITS PRESIDENT, BY AND WITH THE AUTHORITY OF THE BOARD OF DIRECTORS IN ITS NAME AND WITH ITS CORPORATE SEAL, AFFIXED THIS 6<sup>th</sup> DAY OF MAY A.D., 2003

BY: J.A. LONG, INC., A FLORIDA CORPORATION  
WITNESS: Karen L Beck PRINT NAME  
BY: John A. Long PRINT NAME  
ITS PRESIDENT

### STATE OF FLORIDA COUNTY OF CLAY

THE FOREGOING INSTRUMENT WAS ACKNOWLEDGED BEFORE ME THIS 6<sup>th</sup> DAY OF May A.D., 2003, BY JOHN A. LONG, AS PRESIDENT OF J.A. LONG, INC., A FLORIDA CORPORATION, ON BEHALF OF SAID CORPORATION, HE IS PERSONALLY KNOWN TO ME OR HAS PRODUCED John A. Long AS IDENTIFICATION.

WITNESS: Danya Y. Stephens PRINT NAME  
BY: Danya Y. Stephens PRINT NAME  
NOTARY PUBLIC, STATE OF FLORIDA  
COMMISSION NO. DD092737  
MY COMMISSION EXPIRES:

IN WITNESS WHEREOF, SID HIGGINBOTHAM BUILDER, INC., A FLORIDA CORPORATION AUTHORIZED TO DO BUSINESS IN THE STATE OF FLORIDA, HAS CAUSED THESE PRESENTS TO BE SIGNED BY ROGER A. HIGGINBOTHAM, ITS PRESIDENT, BY AND WITH THE AUTHORITY OF THE BOARD OF DIRECTORS IN ITS NAME AND WITH ITS CORPORATE SEAL, AFFIXED THIS 6<sup>th</sup> DAY OF MAY A.D., 2003

BY: SID HIGGINBOTHAM BUILDER, INC., A FLORIDA CORPORATION  
WITNESS: Karen L Beck PRINT NAME  
BY: Roger A. Higginbotham PRINT NAME  
ITS PRESIDENT

### STATE OF FLORIDA COUNTY OF CLAY

THE FOREGOING INSTRUMENT WAS ACKNOWLEDGED BEFORE ME THIS 6<sup>th</sup> DAY OF May A.D., 2003, BY ROGER A. HIGGINBOTHAM, AS PRESIDENT OF SID HIGGINBOTHAM BUILDER, INC., A FLORIDA CORPORATION, ON BEHALF OF SAID CORPORATION, HE IS PERSONALLY KNOWN TO ME OR HAS PRODUCED Roger A. Higginbotham AS IDENTIFICATION.

WITNESS: Raina A. Schage PRINT NAME  
BY: Raina A. Schage PRINT NAME  
NOTARY PUBLIC, STATE OF FLORIDA  
COMMISSION NO. DD092737  
MY COMMISSION EXPIRES:

### DEDICATION FOR MORTGAGEE

SUNTRUST BANK, OWNER AND HOLDER OF THAT CERTAIN MORTGAGE RECORDED IN OFFICIAL RECORDS BOOK 2057, PAGE 0403, OFFICIAL RECORDS BOOK 1649, PAGE 1834 AND MODIFIED IN OFFICIAL RECORDS BOOK 2127, PAGE 231, AND OFFICIAL RECORDS BOOK 1152, PAGE 463 AND MODIFIED IN OFFICIAL RECORDS BOOK 1246, PAGE 664, OF THE PUBLIC RECORDS OF CLAY COUNTY, FLORIDA, HEREBY CONSENTS TO THIS PLAT AND JOINS IN ITS DEDICATION.

IN WITNESS WHEREOF, SUNTRUST BANK, HAS CAUSED THESE PRESENTS TO BE SIGNED BY ITS ASSISTANT VICE PRESIDENT AND WITH THE AUTHORITY OF ITS BOARD OF DIRECTORS IN ITS NAME AND WITH ITS CORPORATE SEAL THIS 7<sup>th</sup> DAY OF MAY A.D., 2003.

BY: SUNTRUST BANK  
WITNESS: F. Darlene Riggs PRINT NAME  
ITS ASSISTANT VICE PRESIDENT

### STATE OF FLORIDA COUNTY OF DUVAL

THE FOREGOING INSTRUMENT WAS ACKNOWLEDGED BEFORE ME THIS 7<sup>th</sup> DAY OF May A.D., 2003, BY F. DARLENE RIGGS, ASSISTANT VICE PRESIDENT OF SUNTRUST BANK. SHE IS PERSONALLY KNOWN TO ME OR HAS PRODUCED F. Darlene Riggs AS IDENTIFICATION.

WITNESS: Kathleen M. Edwards PRINT NAME  
BY: Kathleen M. Edwards PRINT NAME  
NOTARY PUBLIC, STATE OF FLORIDA  
COMMISSION NO. DD092737  
MY COMMISSION EXPIRES:

### DEDICATION FOR MORTGAGEE

PARADISE MOORINGS INVESTMENT TRUST, OWNER AND HOLDER OF THAT CERTAIN MORTGAGE RECORDED IN OFFICIAL RECORDS BOOK 2148, PAGE 863, OF THE PUBLIC RECORDS OF CLAY COUNTY, FLORIDA, HEREBY CONSENTS TO THIS PLAT AND JOINS IN ITS DEDICATION.

IN WITNESS WHEREOF, PARADISE MOORINGS INVESTMENT TRUST, HAS CAUSED THESE PRESENTS TO BE SIGNED BY CARL M. STEWART AS TRUSTEE OF PARADISE MOORINGS INVESTMENT TRUST ON BEHALF OF SAID TRUST THIS 6<sup>th</sup> DAY OF MAY A.D., 2003.

BY: PARADISE MOORINGS INVESTMENT TRUST  
WITNESS: Carl M. Stewart PRINT NAME  
ITS TRUSTEE

### STATE OF FLORIDA COUNTY OF DUVAL

THE FOREGOING INSTRUMENT WAS ACKNOWLEDGED BEFORE ME THIS 6<sup>th</sup> DAY OF May A.D., 2003, BY CARL M. STEWART TRUSTEE OF PARADISE MOORINGS INVESTMENT TRUST. HE IS PERSONALLY KNOWN TO ME OR HAS PRODUCED Carl M. Stewart AS IDENTIFICATION.

WITNESS: Donna G. Rash PRINT NAME  
BY: Donna G. Rash PRINT NAME  
NOTARY PUBLIC, STATE OF FLORIDA  
COMMISSION NO. DD092737  
MY COMMISSION EXPIRES:

### DEDICATION FOR MORTGAGEE

FIRST NATIONAL BANK, OWNER AND HOLDER OF THAT CERTAIN MORTGAGE RECORDED IN OFFICIAL RECORDS BOOK 1884, PAGE 2170, OF THE PUBLIC RECORDS OF CLAY COUNTY, FLORIDA, HEREBY CONSENTS TO THIS PLAT AND JOINS IN ITS DEDICATION.

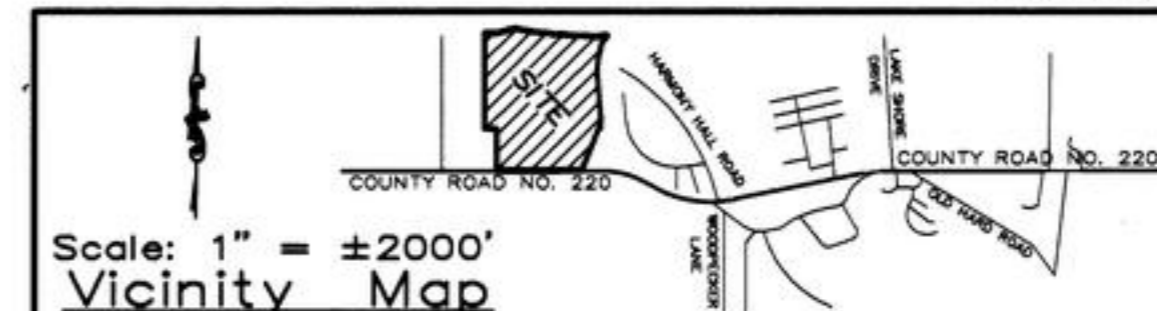
IN WITNESS WHEREOF, FIRST NATIONAL BANK, HAS CAUSED THESE PRESENTS TO BE SIGNED BY ITS SENIOR VICE PRESIDENT AND WITH THE AUTHORITY OF ITS BOARD OF DIRECTORS IN ITS NAME AND WITH ITS CORPORATE SEAL THIS 6<sup>th</sup> DAY OF MAY A.D., 2003.

BY: FIRST NATIONAL BANK  
WITNESS: Robert K. Beaty PRINT NAME  
ITS SENIOR VICE PRESIDENT

### STATE OF FLORIDA COUNTY OF CLAY

THE FOREGOING INSTRUMENT WAS ACKNOWLEDGED BEFORE ME THIS 6<sup>th</sup> DAY OF May A.D., 2003, BY ROBERT K. BEATY, SENIOR VICE PRESIDENT OF FIRST NATIONAL BANK. HE IS PERSONALLY KNOWN TO ME OR HAS PRODUCED Robert K. Beaty AS IDENTIFICATION.

WITNESS: Karen L Beck PRINT NAME  
BY: Karen L Beck PRINT NAME  
NOTARY PUBLIC, STATE OF FLORIDA  
COMMISSION NO. DD092737  
MY COMMISSION EXPIRES:



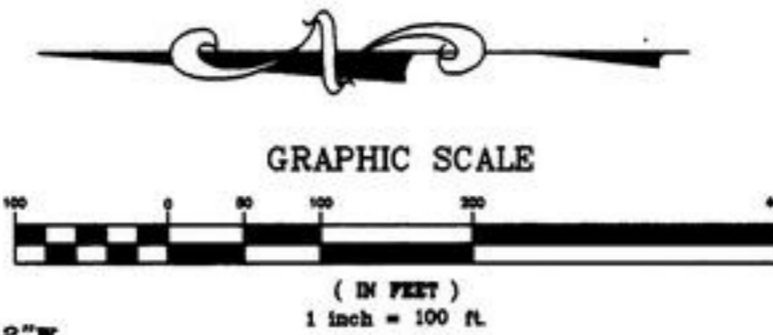
PREPARED BY:  
CLARSON AND ASSOCIATES, INC.  
PROFESSIONAL LAND SURVEYORS  
1643 NALDO AVENUE  
JACKSONVILLE, FLORIDA, 32207  
PHONE: 904-396-2623

**PARADISE MOORINGS** A PART OF SECTION 36, AND A.E. FERGUSON'S HEIRS, SECTION 41, TOWNSHIP 4 SOUTH, RANGE 25 EAST, CLAY COUNTY, FLORIDA, AND BEING A REPLAT OF PART OF LOTS 3 AND 4, DOCTORS INLET FARMS, AS RECORDED IN PLAT BOOK 2, PAGE 17, PUBLIC RECORDS OF CLAY COUNTY, FLORIDA

LAND USE (PLANNED COMMUNITY)

ZONING: PUD  
AREA: 46.32 ACRES  
TOTAL LOTS: 92

ELECTRIC SERVICE PROVIDED BY CLAY ELECTRIC COOPERATIVE, INC.  
WATER AND SEWER SERVICE PROVIDED BY CLAY COUNTY UTILITY AUTHORITY



**NOTES:**

1. NOTICE: THIS PLAT, AS RECORDED IN ITS GRAPHIC FORM, IS THE OFFICIAL DEPICTION OF THE SUBDIVIDED LANDS DESCRIBED HEREIN AND WILL IN NO CIRCUMSTANCES BE SUPPLANTED IN AUTHORITY BY ANY OTHER GRAPHIC OR DIGITAL FORM OF THE PLAT. THERE MAY BE ADDITIONAL RESTRICTIONS NOT RECORDED ON THIS PLAT THAT THAT MAY BE FOUND IN THE PUBLIC RECORDS OF CLAY COUNTY, FLORIDA.
2. BEARING REFERENCE: SOUTH 89°05'30" WEST FOR NORTHERLY RIGHT OF WAY LINE OF COUNTY ROAD NO. 220.
3. THE APPROXIMATE TOP OF BANK SHOWN HEREON IS THE PROPOSED BANK LINE ONLY AND IS NOT TO BE CONSTRUED AS AN ACTUAL AS BUILT LOCATION.
4. THE LANDS PLATTED HEREON ALL LIE WITHIN FLOOD ZONES "X" & "AE" AS SHOWN ON THE FLOOD INSURANCE RATE MAP, COMMUNITY PANEL NO. 120064-01350, DATED NOVEMBER 4, 1992.
5. C.E.C. DENOTES CLAY ELECTRIC COOPERATIVE.
6. C.C.U.A. DENOTES CLAY COUNTY UTILITY AUTHORITY.
7. MINIMUM BUILDING RESTRICTION SETBACKS ARE: FRONT=15'; REAR=15'; SIDE=5'.
8. ALL PLATTED UTILITY EASEMENTS SHALL PROVIDE THAT SUCH EASEMENTS SHALL ALSO BE EASEMENTS FOR THE CONSTRUCTION, INSTALLATION, MAINTENANCE, AND OPERATION OF CABLE TELEVISION SERVICES; PROVIDED, HOWEVER, NO SUCH CONSTRUCTION, INSTALLATION, MAINTENANCE, AND OPERATION OF CABLE TELEVISION SERVICES SHALL INTERFERE WITH THE FACILITIES AND SERVICES OF AN ELECTRIC, TELEPHONE, GAS, OR OTHER PUBLIC UTILITY. IN THE EVENT A CABLE TELEVISION COMPANY DAMAGES THE FACILITIES OF A PUBLIC UTILITY, IT SHALL BE SOLELY RESPONSIBLE FOR THE DAMAGES.
9. WHETHER DEPICTED ON THE PLAT OR NOT, THE DEVELOPER/OWNER HEREBY GRANTS CLAY ELECTRIC COOPERATIVE, INC., A 10 FOOT WIDE PERPETUAL EASEMENT FOR UTILITY SERVICES OVER, UNDER, UPON AND ACROSS ALL LANDS LYING ADJACENT TO, PARALLEL WITH, AND OUTSIDE OF THE AREAS SHOWN ON THE PLAT AS ROADS, STREETS, OR OTHER RIGHTS OF WAY.
10. WHERE A CLAY ELECTRIC EASEMENT CROSSES AN EASEMENT OR RIGHT OF WAY GRANTED TO THE CLAY COUNTY UTILITY AUTHORITY, CLAY ELECTRIC COOPERATIVE, INC. SHALL HAVE THE RIGHT TO LOCATE ITS FACILITIES IN SAID JOINT USE EASEMENT AREA, BUT SUCH USE SHALL BE NON-EXCLUSIVE. CLAY COUNTY UTILITY AUTHORITY SHALL USE, OCCUPY, AND LOCATE FACILITIES IN THESE JOINT USE AREAS SO AS TO REASONABLY ACCOMMODATE CLAY ELECTRIC COOPERATIVE, INC.'S FACILITIES.
11. WHERE A CLAY COUNTY UTILITY AUTHORITY EASEMENT CROSSES AN EASEMENT OR RIGHT OF WAY GRANTED TO CLAY ELECTRIC COOPERATIVE, INC., CLAY COUNTY UTILITY AUTHORITY SHALL HAVE THE RIGHT TO LOCATE ITS FACILITIES IN SAID JOINT USE EASEMENT AREA, BUT SUCH USE SHALL BE NON-EXCLUSIVE. CLAY ELECTRIC COOPERATIVE, INC. SHALL USE, OCCUPY, AND LOCATE FACILITIES IN THESE JOINT USE AREAS SO AS TO REASONABLY ACCOMMODATE CLAY COUNTY UTILITY AUTHORITY'S FACILITIES.
12. ALL EASEMENTS, FOR THE WATER AND SEWER SYSTEMS, MARKED C.C.U.A. AND SHOWN ON PLAT ARE HEREBY IRREVOCABLY AND WITHOUT RESERVATION DEDICATED TO CLAY COUNTY UTILITY AUTHORITY (C.C.U.A.), ITS SUCCESSORS AND ASSIGNS.
13. ALL EASEMENTS FOR THE UNDERGROUND ELECTRICAL DISTRIBUTION SYSTEM, MARKED C.E.C. AND SHOWN ON PLAT ARE HEREBY IRREVOCABLY AND WITHOUT RESERVATION DEDICATED TO CLAY ELECTRIC COOPERATIVE, INC. (C.E.C.), ITS SUCCESSORS AND ASSIGNS.
14. CURRENT LAW PROVIDES THAT NO CONSTRUCTION, FILLING, REMOVAL OF EARTH, CUTTING OF TREES OR OTHER PLANTS SHALL TAKE PLACE WITHIN THE JURISDICTIONAL WETLANDS AND UPLAND BUFFER AS DEPICTED ON THIS PLAT WITHOUT THE WRITTEN APPROVAL OF CLAY COUNTY AND OTHER REGULATORY AGENCIES WITH JURISDICTION OVER SUCH WETLANDS AND BUFFER. IT IS THE RESPONSIBILITY OF THE LOT OWNER, HIS AGENT AND ENTITY PERFORMING AND ACTIVITY WITHIN THE WETLAND AREA TO ACQUIRE THE NECESSARY WRITTEN APPROVAL PRIOR TO THE BEGINNING OF ANY WORK. THIS JURISDICTIONAL WETLANDS LINE MAY BE SUPERSEDED AND REDEFINED FROM TIME TO TIME BY THE APPROPRIATE GOVERNMENTAL AGENCIES.
15. THE MEAN HIGH WATER LINE OF DOCTORS LAKE WAS ESTABLISHED AT ELEVATION 1.23 (NGVD) BY FLORIDA DEPARTMENT OF ENVIRONMENTAL PROTECTION ON JUNE 22, 2000, AS SHOWN ON SURVEY PREPARED BY ALL AMERICAN SURVEYORS OF FLORIDA, INC., DATED 6-29-2000.

**LEGEND:**

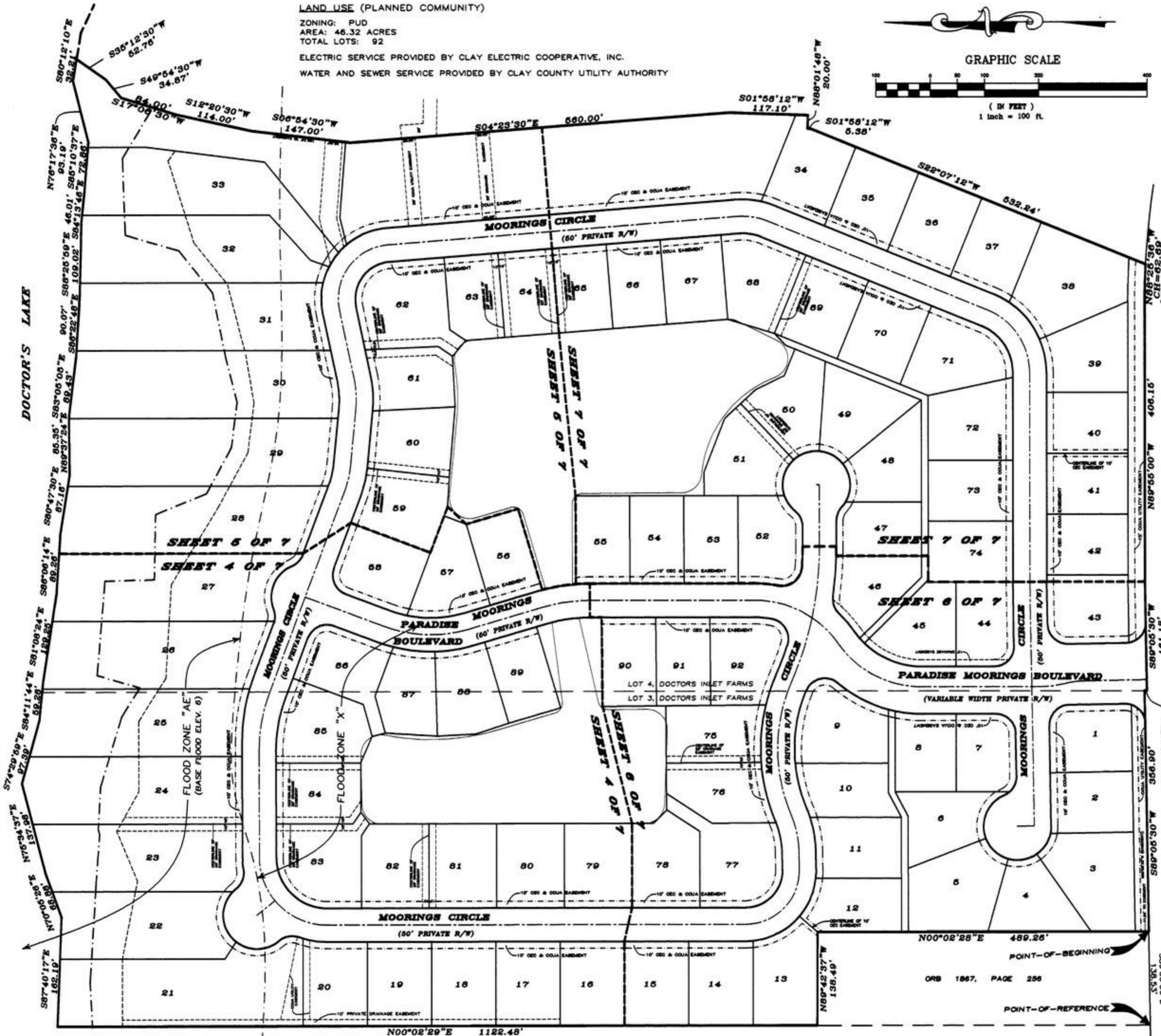
- SET 4"x4" CONCRETE PERMANENT REFERENCE MONUMENT (NO. 1704)
- SET PERMANENT CONTROL POINT (NO. 1704)
- C7 CURVE NUMBER
- P.C. POINT OF CURVATURE
- P.T. POINT OF TANGENCY
- P.R.C. POINT OF REVERSE CURVE
- P.C.C. POINT OF COMPOUND CURVE
- (R) RADIAL LINE
- O.R.V. OFFICIAL RECORDS VOLUME
- R.P. RADIUS POINT
- R/W RIGHT OF WAY
- R RADIUS
- L ARC LENGTH
- CH CHORD
- CCUA CLAY COUNTY UTILITY AUTHORITY
- CEC CLAY ELECTRIC COOPERATIVE

**TYPE II SUBDIVISION "PUD" ZONING** (PLANNED COMMUNITY)

**OWNERS**  
BESTCON, INC.  
1484 LAUREL WAY  
ATLANTIC BEACH, FLORIDA, 32233

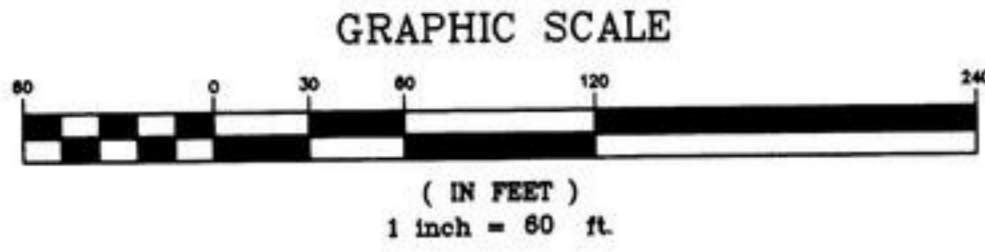
**ENGINEER**  
J. LUCAS & ASSOCIATES  
1305 CEDAR STREET  
JACKSONVILLE, FLORIDA, 32207

PREPARED BY:  
**CLARSON AND ASSOCIATES, INC.**  
PROFESSIONAL LAND SURVEYORS  
1643 NALDO AVENUE  
JACKSONVILLE, FLORIDA, 32207  
PHONE: 904-396-2623



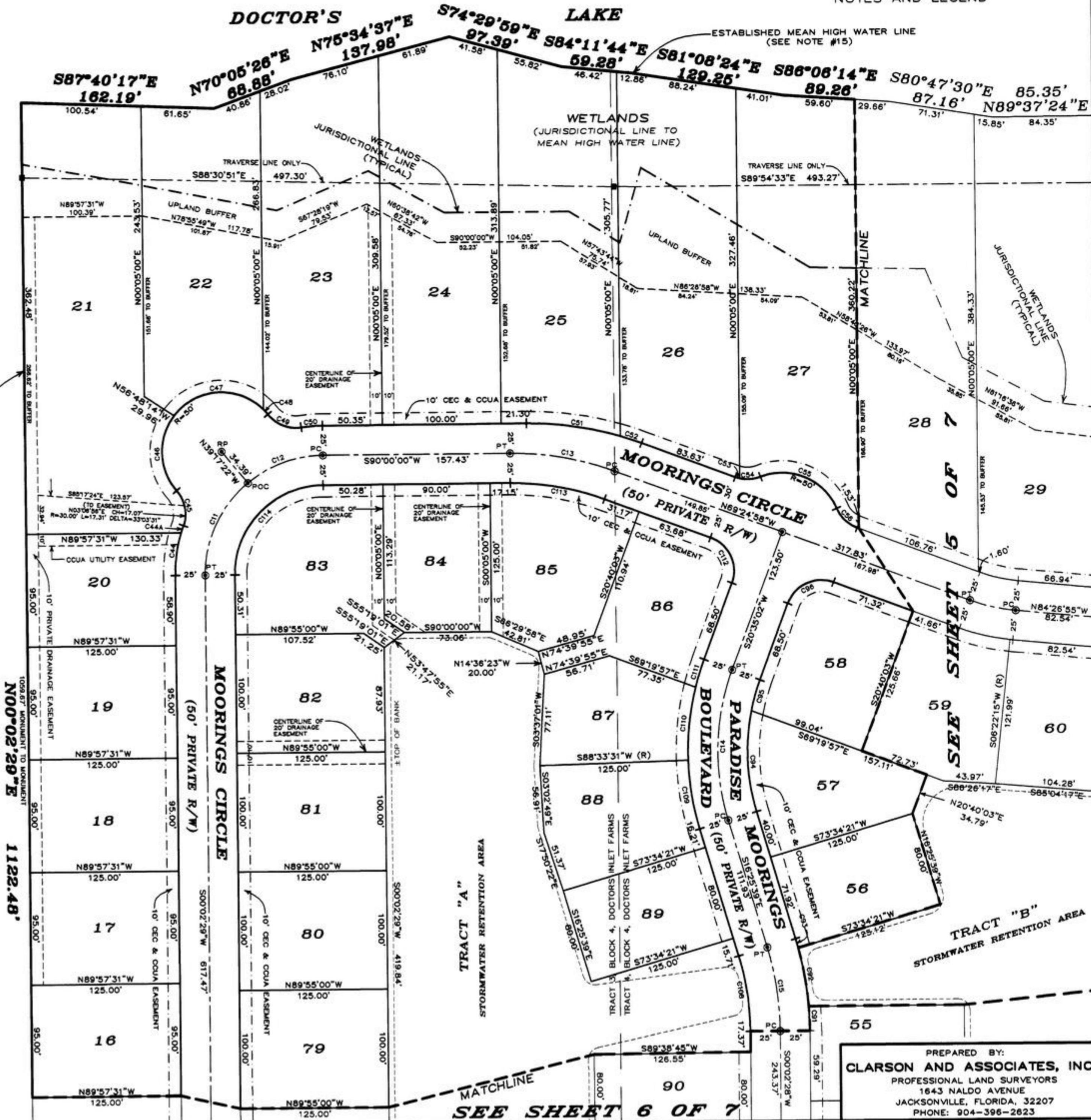
**PARADISE MOORINGS** A PART OF SECTION 36, AND A.E. FERGUSON'S HEIRS, SECTION 41, TOWNSHIP 4 SOUTH, RANGE 25 EAST, CLAY COUNTY, FLORIDA, AND BEING A REPLAT OF PART OF LOTS 3 AND 4, DOCTORS INLET FARMS, AS RECORDED IN PLAT BOOK 2, PAGE 17, PUBLIC RECORDS OF CLAY COUNTY, FLORIDA

SHEET 4 OF 7  
NOTE: SEE SHEET 2 FOR GENERAL NOTES AND LEGEND



CURVE	LENGTH	RADIUS	BEARING	CHORD	DELTA	TANGENT
C11	88.43'	100.00'	S25°22'34"W	85.58'	50°40'09"	47.34'
C12	68.57'	100.00'	S70°21'19"W	67.24'	39°17'21"	35.70'
C13	89.81'	250.00'	N79°42'29"W	89.33'	20°35'03"	45.40'
C14	129.19'	200.00'	S02°04'42"W	126.96'	37°00'41"	66.94'
C15	71.86'	250.00'	N08°11'35"W	71.61'	16°28'07"	36.18'
C44	36.82'	125.00'	S08°26'03"W	36.49'	16°47'07"	18.44'
C44A	6.15'	125.00'	S18°14'09"W	6.15'	02°49'05"	3.07'
C45	31.47'	30.00'	N10°24'16"W	30.04'	60°05'54"	17.35'
C46	68.39'	50.00'	S01°16'01"E	63.18'	78°22'24"	40.76'
C47	84.88'	50.00'	S86°33'18"W	75.05'	97°16'15"	56.78'
C48	5.83'	50.00'	N41°28'03"W	5.83'	06°41'04"	2.92'
C49	31.47'	30.00'	S88°10'28"E	30.04'	60°05'54"	17.35'
C50	17.94'	125.00'	S85°53'18"W	17.93'	08°13'24"	8.99'
C51	79.80'	275.00'	N81°41'14"W	79.52'	16°37'32"	40.18'
C52	19.00'	275.00'	N71°23'43"W	19.00'	03°57'30"	9.50'
C53	3.83'	30.00'	S73°04'11"E	3.82'	07°18'26"	1.92'
C54	17.86'	30.00'	N86°13'32"E	17.59'	34°06'08"	9.20'
C55	76.77'	50.00'	N66°50'14"W	69.45'	87°58'38"	48.27'
C56	24.38'	30.00'	S46°07'56"E	23.72'	46°34'03"	12.91'
C91	20.73'	275.00'	N02°07'05"W	20.72'	04°19'06"	10.37'
C92	50.24'	275.00'	N09°30'39"W	50.17'	10°28'03"	25.19'
C93	8.08'	275.00'	N15°35'10"W	8.08'	01°40'58"	4.04'
C94	85.92'	175.00'	S02°21'46"E	85.06'	28°07'45"	43.84'
C95	27.13'	175.00'	S16°08'35"W	27.10'	08°52'55"	13.59'
C96	47.12'	30.00'	S85°35'02"W	42.43'	90°00'00"	30.00'
C108	64.67'	225.00'	N08°11'35"W	64.45'	16°28'07"	32.56'
C109	58.85'	225.00'	S08°56'04"E	58.66'	14°59'09"	29.59'
C110	62.10'	225.00'	S06°27'54"W	61.90'	15°48'47"	31.25'
C111	24.40'	225.00'	S17°28'40"W	24.38'	06°12'45"	12.21'
C112	47.12'	30.00'	N24°24'58"W	42.43'	90°00'00"	30.00'
C113	80.83'	225.00'	N79°42'29"W	80.40'	20°35'03"	40.86'
C114	117.76'	75.00'	S45°01'14"W	106.03'	89°57'31"	74.95'

A PART OF LOT 3, BLOCK 4, DOCTORS INLET FARMS  
WEST LINE OF EAST 1/2 OF LOT 3, BLOCK 4, DOCTORS INLET FARMS  
1009.67' MONUMENT TO MONUMENT  
N00°02'29"E 1122.48'

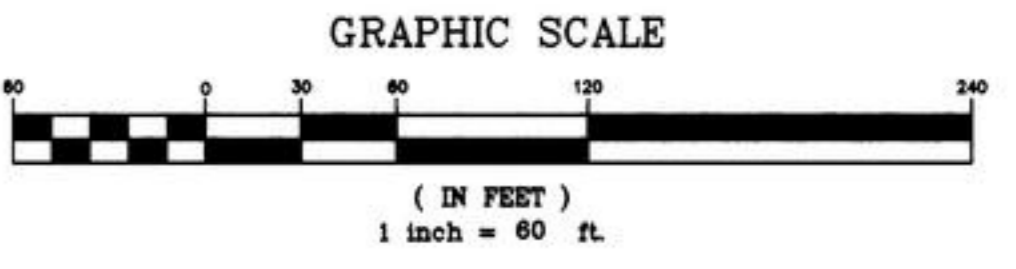
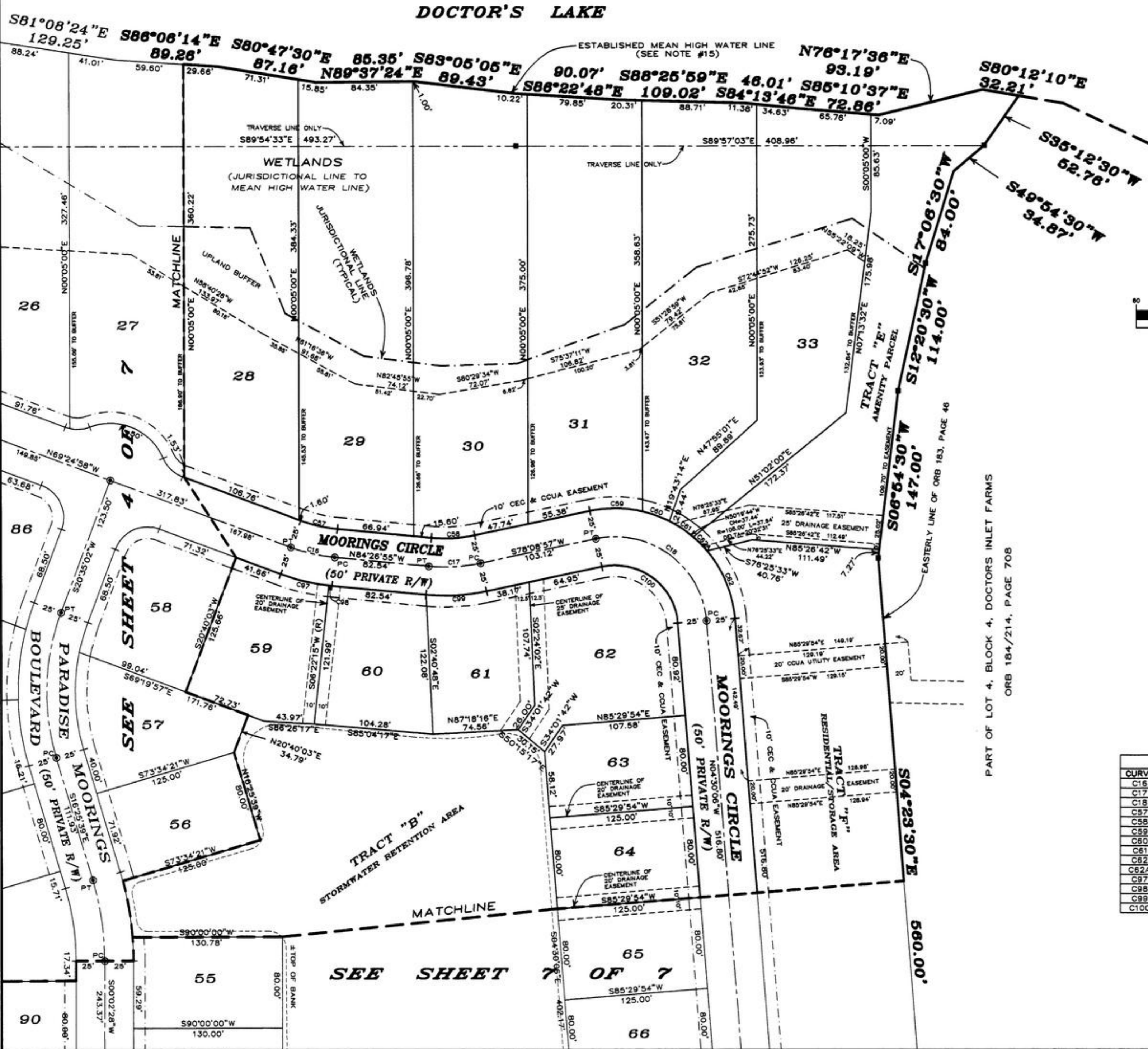


PREPARED BY:  
**CLARSON AND ASSOCIATES, INC.**  
PROFESSIONAL LAND SURVEYORS  
1643 NALDO AVENUE  
JACKSONVILLE, FLORIDA, 32207  
PHONE: 904-396-2623

SEE SHEET 6 OF 7

**PARADISE MOORINGS** A PART OF SECTION 36, AND A.E. FERGUSON'S HEIRS, SECTION 41, TOWNSHIP 4 SOUTH, RANGE 25 EAST, CLAY COUNTY, FLORIDA, AND BEING A REPLAT OF PART OF LOTS 3 AND 4, DOCTORS INLET FARMS, AS RECORDED IN PLAT BOOK 2, PAGE 17, PUBLIC RECORDS OF CLAY COUNTY, FLORIDA

SHEET 5 OF 7  
NOTE: SEE SHEET 2 FOR GENERAL NOTES AND LEGEND



**CURVE TABLE**

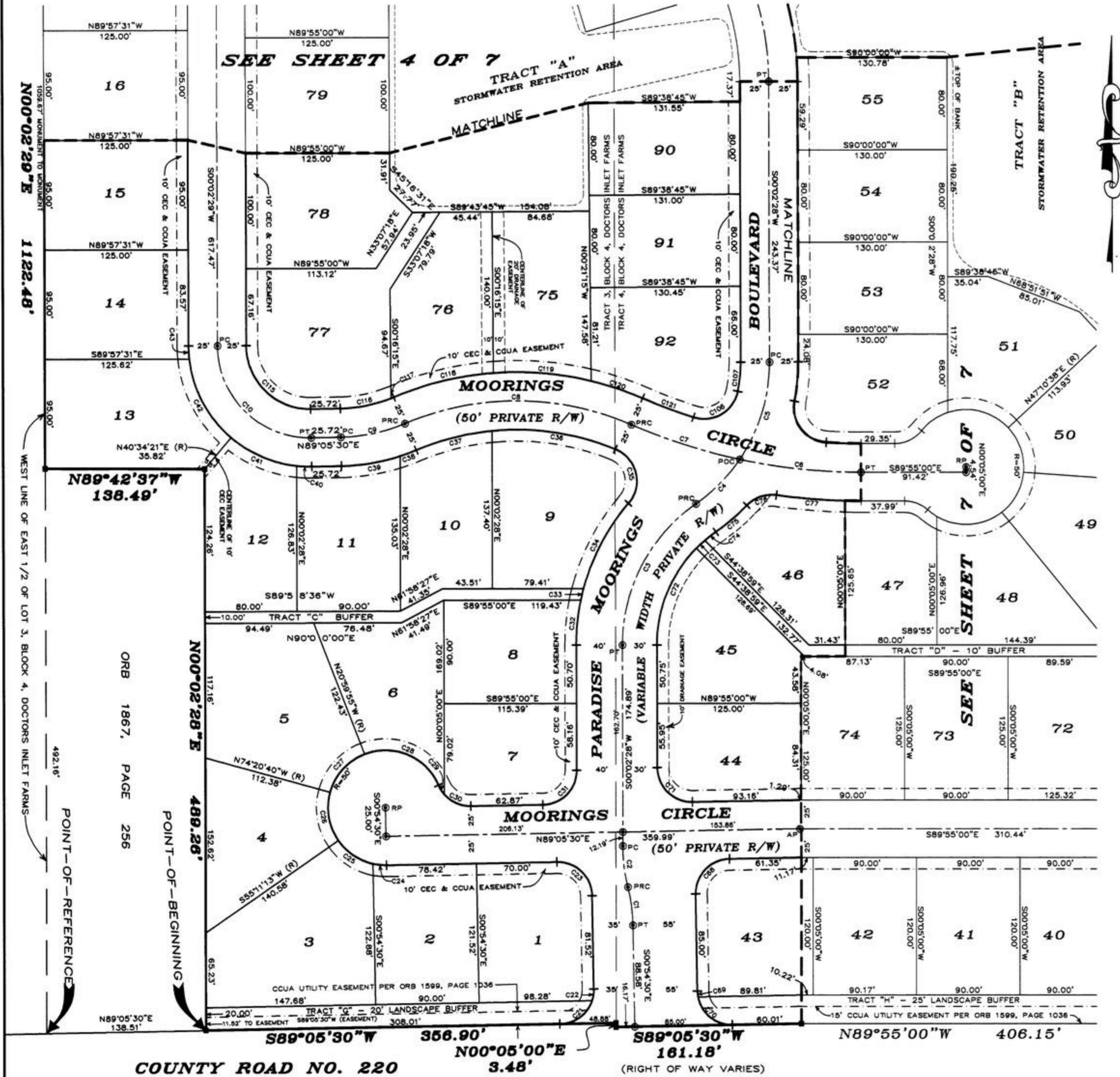
CURVE	LENGTH	RADIUS	BEARING	CHORD	DELTA	TANGENT
C16	39.36'	150.00'	S76°55'56"E	39.24'	15°01'57"	19.79'
C17	45.58'	150.00'	N66°51'01"E	45.38'	17°24'08"	22.98'
C18	135.93'	80.00'	N53°10'35"W	120.16'	97°20'57"	90.98'
C57	32.80'	125.00'	S78°55'58"E	32.70'	15°01'57"	16.49'
C58	37.97'	125.00'	N86°51'01"E	37.82'	17°24'08"	19.13'
C59	46.20'	105.00'	N89°14'49"W	45.82'	25°12'28"	23.48'
C60	25.06'	105.00'	N69°48'21"W	25.00'	13°40'27"	12.59'
C61	25.06'	105.00'	N58°07'54"W	25.00'	13°40'27"	12.59'
C62	65.16'	105.00'	N22°16'48"W	64.12'	35°33'23"	33.67'
C62A	16.93'	105.00'	N44°40'35"W	16.91'	09°14'11"	8.48'
C97	43.41'	175.00'	S78°31'22"E	43.30'	14°12'48"	21.82'
C98	2.50'	175.00'	S84°02'20"E	2.50'	00°49'09"	1.25'
C99	53.15'	175.00'	N66°51'01"E	52.95'	17°24'08"	26.78'
C100	93.45'	55.00'	N53°10'35"W	82.61'	97°20'57"	62.95'

PART OF LOT 4, BLOCK 4, DOCTORS INLET FARMS  
ORB 184/214, PAGE 708

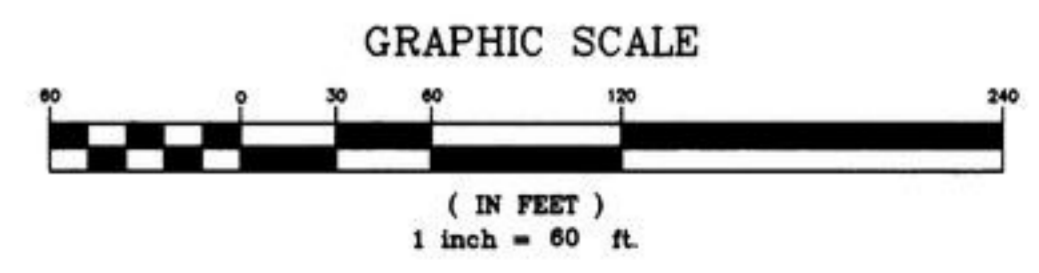
PREPARED BY:  
**CLARSON AND ASSOCIATES, INC.**  
PROFESSIONAL LAND SURVEYORS  
1643 NALDO AVENUE  
JACKSONVILLE, FLORIDA, 32207  
PHONE: 904-396-2623

**PARADISE MOORINGS** A PART OF SECTION 36, AND A.E. FERGUSON'S HEIRS, SECTION 41, TOWNSHIP 4 SOUTH, RANGE 25 EAST, CLAY COUNTY, FLORIDA, AND BEING A REPLAT OF PART OF LOTS 3 AND 4, DOCTORS INLET FARMS, AS RECORDED IN PLAT BOOK 2, PAGE 17, PUBLIC RECORDS OF CLAY COUNTY, FLORIDA

SHEET 6 OF 7  
NOTE: SEE SHEET 2 FOR GENERAL NOTES AND LEGEND



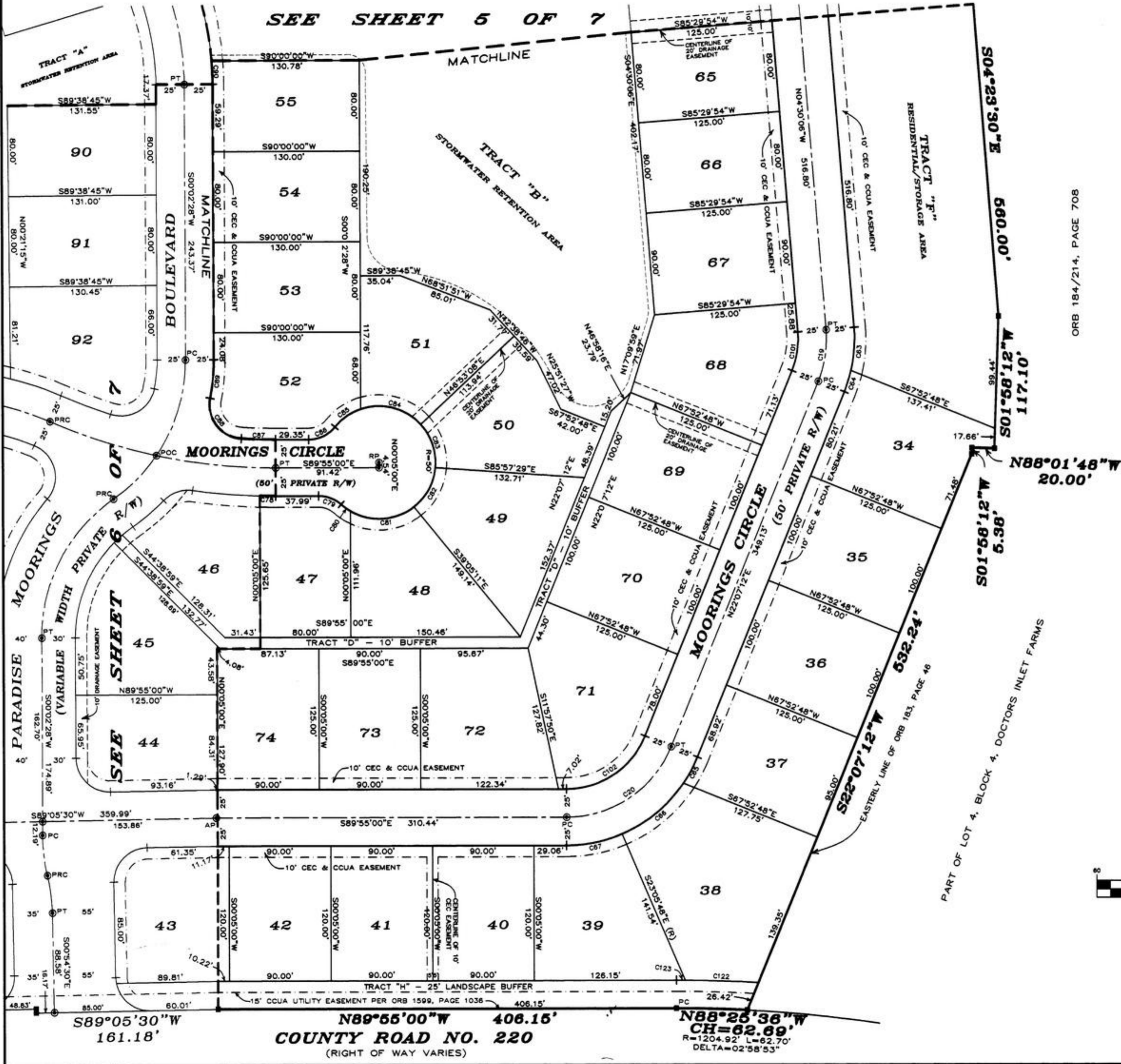
CURVE	LENGTH	RADIUS	BEARING	CHORD	DELTA	TANGENT
C1	33.66'	150.00'	N07°20'10"W	33.59'	12°51'20"	16.90'
C2	36.14'	150.00'	S08°51'41"E	36.05'	13°48'18"	18.16'
C3	144.24'	150.00'	S27°35'20"W	138.75'	55°05'43"	78.24'
C4	54.52'	150.00'	N44°43'24"E	54.22'	20°49'34"	27.57'
C5	89.72'	150.00'	N17°10'32"E	88.38'	34°16'09"	46.25'
C6	106.14'	500.00'	S83°30'06"E	105.95'	12°09'48"	53.27'
C7	99.03'	500.00'	S72°04'45"E	98.87'	11°20'54"	49.68'
C8	202.34'	250.00'	N89°35'30"W	196.86'	46°22'24"	107.08'
C9	57.26'	150.00'	N78°09'24"E	56.91'	21°52'12"	28.98'
C10	126.99'	80.00'	S45°26'01"E	114.07'	90°56'59"	81.34'
C21	36.93'	30.00'	N53°49'38"E	34.64'	70°31'44"	21.21'
C22	10.20'	30.00'	N08°49'38"E	10.15'	19°28'16"	5.15'
C23	47.12'	30.00'	N48°54'30"W	42.43'	90°00'00"	30.00'
C24	11.68'	50.00'	S84°12'52"E	11.66'	13°23'17"	5.87'
C25	37.27'	50.00'	S56°10'00"E	36.41'	42°42'26"	19.55'
C26	44.04'	50.00'	S09°34'43"E	42.63'	80°28'07"	23.56'
C27	46.55'	50.00'	S42°19'43"W	44.89'	53°20'44"	25.12'
C28	76.85'	50.00'	N66°57'56"W	69.51'	88°03'57"	48.34'
C29	9.52'	30.00'	S32°01'18"E	9.48'	18°10'36"	4.80'
C30	26.07'	30.00'	S68°00'32"E	25.26'	49°47'56"	13.93'
C31	46.63'	30.00'	N44°33'59"E	42.07'	89°03'02"	29.51'
C32	39.58'	190.00'	S08°00'33"W	39.51'	11°56'11"	19.86'
C33	10.28'	190.00'	S13°31'40"W	10.28'	03°08'03"	5.14'
C34	84.54'	190.00'	S27°49'29"W	83.84'	25°29'34"	42.98'
C35	56.59'	30.00'	N13°27'55"W	48.56'	108°04'22"	41.35'
C36	109.42'	225.00'	N81°26'00"W	108.34'	27°51'49"	55.81'
C37	68.38'	225.00'	S79°55'42"W	68.12'	17°24'48"	34.46'
C38	14.87'	175.00'	N69°39'23"E	14.87'	04°52'10"	7.44'
C39	51.92'	175.00'	N80°35'29"E	51.73'	17°00'01"	26.15'
C40	13.28'	105.00'	S87°17'11"E	13.27'	07°14'38"	6.65'
C41	62.74'	105.00'	S66°32'45"E	61.81'	34°14'14"	32.34'
C42	79.21'	105.00'	S27°49'02"E	77.34'	43°13'13"	41.59'
C43	11.45'	105.00'	S03°04'58"E	11.45'	06°14'55"	5.73'
C68	47.12'	30.00'	S44°05'30"W	42.43'	80°00'00"	30.00'
C69	5.02'	30.00'	S08°42'20"E	5.02'	08°38'39"	2.52'
C70	42.10'	30.00'	S50°42'20"E	38.73'	80°24'21"	25.35'
C71	47.62'	30.00'	S45°26'01"E	42.78'	90°56'58"	30.50'
C72	93.37'	120.00'	S22°19'51"W	91.03'	44°34'46"	49.19'
C73	10.01'	120.00'	S47°00'35"W	10.00'	04°46'41"	5.01'
C74	12.02'	120.00'	S52°18'03"W	12.01'	05°44'16"	6.01'
C75	35.60'	180.00'	N49°28'15"E	35.54'	11°19'53"	17.86'
C76	28.44'	30.00'	S70°47'47"W	27.39'	54°18'58"	15.39'
C77	59.62'	525.00'	S89°07'57"E	59.59'	06°30'25"	29.84'
C106	50.36'	30.00'	N59°49'57"E	44.65'	96°10'54"	33.42'
C107	25.53'	125.00'	N05°53'29"E	25.48'	11°42'02"	12.81'
C115	87.31'	55.00'	S45°26'01"E	78.42'	90°56'59"	55.92'
C116	45.15'	125.00'	N78°44'36"E	44.91'	20°41'47"	22.82'
C117	2.56'	125.00'	N67°48'31"E	2.56'	01°10'25"	1.28'
C118	89.73'	275.00'	S76°34'09"W	89.33'	18°41'42"	45.27'
C119	85.58'	275.00'	N85°10'06"W	85.23'	17°49'48"	43.14'
C120	47.27'	275.00'	N71°19'45"W	47.21'	09°50'55"	23.69'
C121	47.02'	475.00'	S69°14'27"E	47.00'	05°40'18"	23.53'



PREPARED BY:  
**CLARSON AND ASSOCIATES, INC.**  
PROFESSIONAL LAND SURVEYORS  
1643 NALDO AVENUE  
JACKSONVILLE, FLORIDA, 32207  
PHONE: 904-396-2623

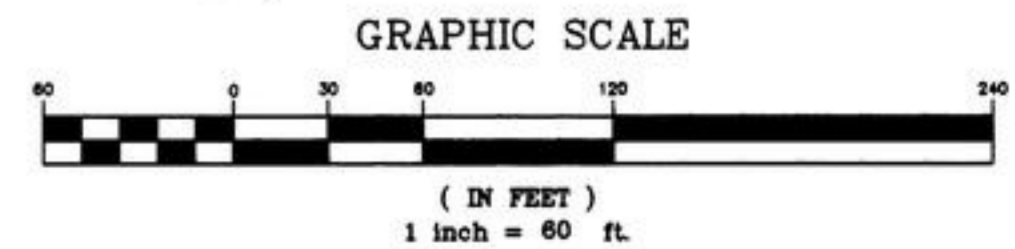
**PARADISE MOORINGS** A PART OF SECTION 36, AND A.E. FERGUSON'S HEIRS, SECTION 41, TOWNSHIP 4 SOUTH, RANGE 25 EAST, CLAY COUNTY, FLORIDA, AND BEING A REPLAT OF PART OF LOTS 3 AND 4, DOCTORS INLET FARMS, AS RECORDED IN PLAT BOOK 2, PAGE 17, PUBLIC RECORDS OF CLAY COUNTY, FLORIDA

SHEET 7 OF 7  
NOTE: SEE SHEET 2 FOR GENERAL NOTES AND LEGEND



ORB 184/214, PAGE 708

CURVE TABLE						
CURVE	LENGTH	RADIUS	BEARING	CHORD	DELTA	TANGENT
C19	46.45'	100.00'	N08°48'33"E	46.05'	26°37'18"	23.66'
C20	118.62'	100.00'	N56°06'06"E	111.79'	67°57'48"	67.40'
C63	38.21'	125.00'	N04°15'19"E	38.06'	17°30'51"	19.28'
C64	19.87'	125.00'	N17°33'58"E	19.85'	09°06'27"	9.98'
C65	26.27'	125.00'	N28°08'28"E	26.22'	12°02'33"	13.18'
C66	71.43'	125.00'	N50°31'58"E	70.46'	32°44'27"	36.72'
C67	50.57'	125.00'	N78°29'36"E	50.23'	23°10'48"	25.64'
C78	14.03'	925.00'	S89°09'05"E	14.03'	01°31'51"	7.01'
C79	21.84'	30.00'	N68°57'47"W	21.46'	41°54'28"	11.49'
C80	9.87'	50.00'	S53°39'59"E	9.86'	111°18'49"	4.95'
C81	59.90'	50.00'	N86°21'25"E	56.38'	68°38'24"	34.13'
C82	40.74'	50.00'	N28°41'50"E	39.62'	48°40'45"	21.57'
C83	41.47'	50.00'	N18°24'01"W	40.29'	47°30'58"	22.01'
C84	57.71'	50.00'	N75°13'31"W	54.56'	66°08'02"	32.55'
C85	28.38'	50.00'	S55°26'57"W	28.00'	32°31'03"	14.58'
C86	26.85'	30.00'	N64°38'13"E	25.78'	50°53'34"	14.27'
C87	30.18'	475.00'	S88°05'48"E	30.17'	03°38'24"	15.09'
C88	51.06'	30.00'	S37°30'50"E	45.12'	97°31'32"	34.22'
C89	34.23'	175.00'	N05°38'42"E	34.18'	111°2'28"	17.17'
C90	20.73'	275.00'	N02°07'05"W	20.72'	04°19'06"	10.37'
C101	34.85'	75.00'	N08°48'33"E	34.54'	26°37'18"	17.74'
C102	88.96'	75.00'	N56°06'06"E	83.84'	67°57'48"	50.55'
C122	64.79'	1229.92'	S88°02'36"E	64.79'	03°01'08"	32.40'
C123	7.83'	1229.92'	N89°44'06"W	7.83'	00°21'53"	3.91'



PREPARED BY:  
**CLARSON AND ASSOCIATES, INC.**  
PROFESSIONAL LAND SURVEYORS  
1643 NALDO AVENUE  
JACKSONVILLE, FLORIDA, 32207  
PHONE: 904-396-2623