

# RIDGECREST UNIT ELEVEN

CLAY COUNTY, FLORIDA

Being a Replat of a portion of Lots 1, 2, 3, 17, 18, 19 and 20, Section 15, Ridgewood, Clay County, Florida, according to map of said Ridgewood recorded in Deed Book "Q" page 663 of the Public Records of said County, together with a portion of Harrison Avenue (Closed April 11, 1960 as per County Commissioners Minute Book 10, pages 138 and 139).

All of the aforementioned being more particularly described in the caption following:

### CAPTION

Commence at the most Southerly corner of lot 11, Ridgecrest Unit 7, according to Plat Book 17, pages 36-39 of said Public Records;  
Thence on the southeasterly line of said lot 11 run North 18 degrees 32 minutes 00 seconds East 50.0 feet to the Point of Beginning;  
Thence continue North 18 degrees 32 minutes 00 seconds East 40.0 feet;  
Thence North 18 degrees 38 minutes 29 seconds East 100.29 feet;  
Thence North 24 degrees 06 minutes 55 seconds East 91.80 feet;  
Thence North 32 degrees 28 minutes 18 seconds East 91.80 feet;  
Thence North 40 degrees 49 minutes 40 seconds East 91.80 feet;  
Thence North 49 degrees 11 minutes 02 seconds East 91.80 feet;  
Thence North 57 degrees 32 minutes 25 seconds East 91.80 feet;  
Thence North 65 degrees 07 minutes 01 seconds East 109.60 feet;  
Thence North 60 degrees 17 minutes 12 seconds East 108.00 feet;  
Thence North 50 degrees 28 minutes 23 seconds East 124.30 feet to the South-westerly line of Garfield Avenue;  
Thence on last said line South 44 degrees 58 minutes 00 seconds East 1,180.00 feet;  
Thence South 45 degrees 02 minutes 00 seconds West 312.13 feet;  
Thence North 89 degrees 58 minutes 00 seconds West 239.67 feet;  
Thence South 50 degrees 55 minutes 58 seconds West 53.82 feet;  
Thence South 45 degrees 02 minutes 00 seconds West 317.21 feet;  
Thence South 27 degrees 36 minutes 58 seconds West 44.08 feet;  
Thence South 10 degrees 11 minutes 59 seconds West 236.87 feet;  
Thence South 50 degrees 06 minutes 53 seconds West 25.31 feet;  
Thence North 79 degrees 48 minutes 01 seconds West 283.76 feet;  
Thence North 10 degrees 11 minutes 59 seconds East 170.00 feet;  
Thence North 02 degrees 34 minutes 27 seconds East 172.18 feet;  
Thence North 44 degrees 58 minutes 00 seconds West 371.30 feet;  
Thence North 21 degrees 27 minutes 24 seconds West 184.75 feet;  
Thence North 32 degrees 56 minutes 19 seconds West 150.04 feet to the Point of Beginning.

27.29 Ac

### SURVEYOR'S CERTIFICATE

This is to certify that the accompanying plat is a correct representation of the lands surveyed, platted and described hereon, that Permanent Reference Monuments have been placed as shown on said plat according to Chapter 71-339, Laws of Florida and that Permanent Control Points will be set as shown on said plat in accordance with said laws, that said survey was made under my responsible direction and supervision and that the survey data shown on said plat complies with all the requirements of said Chapter.

Signed this 12<sup>th</sup> day of March, 1983.

Harold Eiland  
Fla. Certificate No. 2518  
McKee, Eiland and Mullis  
Land Surveyors Inc.  
1246 Highway No. 17  
Orange Park, Florida

### ADOPTION AND DEDICATION

This is to certify that Ridgewood Estates Inc., a corporation under the Laws of the state of Florida, is the lawful owner of Ridgecrest Unit Eleven as described in the caption hereon, that it has caused the same to be surveyed and subdivided and that this plat, made in accordance with said survey is hereby adopted as the true and correct plat of said lands and that all streets, rights-of-way and easements shown on said plat are hereby irrevocably and without reservation dedicated to Clay County and its successors.

In witness whereof Ridgewood Estates, Inc. has caused these presents to be signed by its President and Secretary by and with the authority of its Board of Directors and has affixed its seal this 19<sup>th</sup> day of April, 1983.

Thomas C. Mullis  
WITNESS

Homer J. Custead  
PRESIDENT

Jonathan B. Bowen  
WITNESS

Patricia C. Rogers  
SECRETARY

### STATE OF FLORIDA - COUNTY OF CLAY

The foregoing instrument was acknowledged before me this 19<sup>th</sup> day of April, 1983 by Homer J. Custead and Patricia C. Rogers President and Secretary respectively of Ridgewood Estates, Inc. a corporation under the laws of the state of Florida on behalf of the corporation.

Kathryn J. Stone  
Notary Public, State of Fla. at large.  
My commission expires Mar. 25, 1987.

### COUNTY ENGINEER'S APPROVAL

Approved this 26<sup>th</sup> day of April, 1983.

J. L. [Signature]  
COUNTY ENGINEER

### COUNTY PLANNING COMMISSION'S APPROVAL

Approved this 20<sup>th</sup> day of April, 1983.

[Signature]  
ZONING COORDINATOR

### COUNTY COMMISSIONERS' APPROVAL

Examined and approved this 26<sup>th</sup> day of April, 1983, by the Board of County Commissioners of Clay County, Florida.

Valmady L. Smith  
CHAIRMAN

### CLERK'S CERTIFICATE

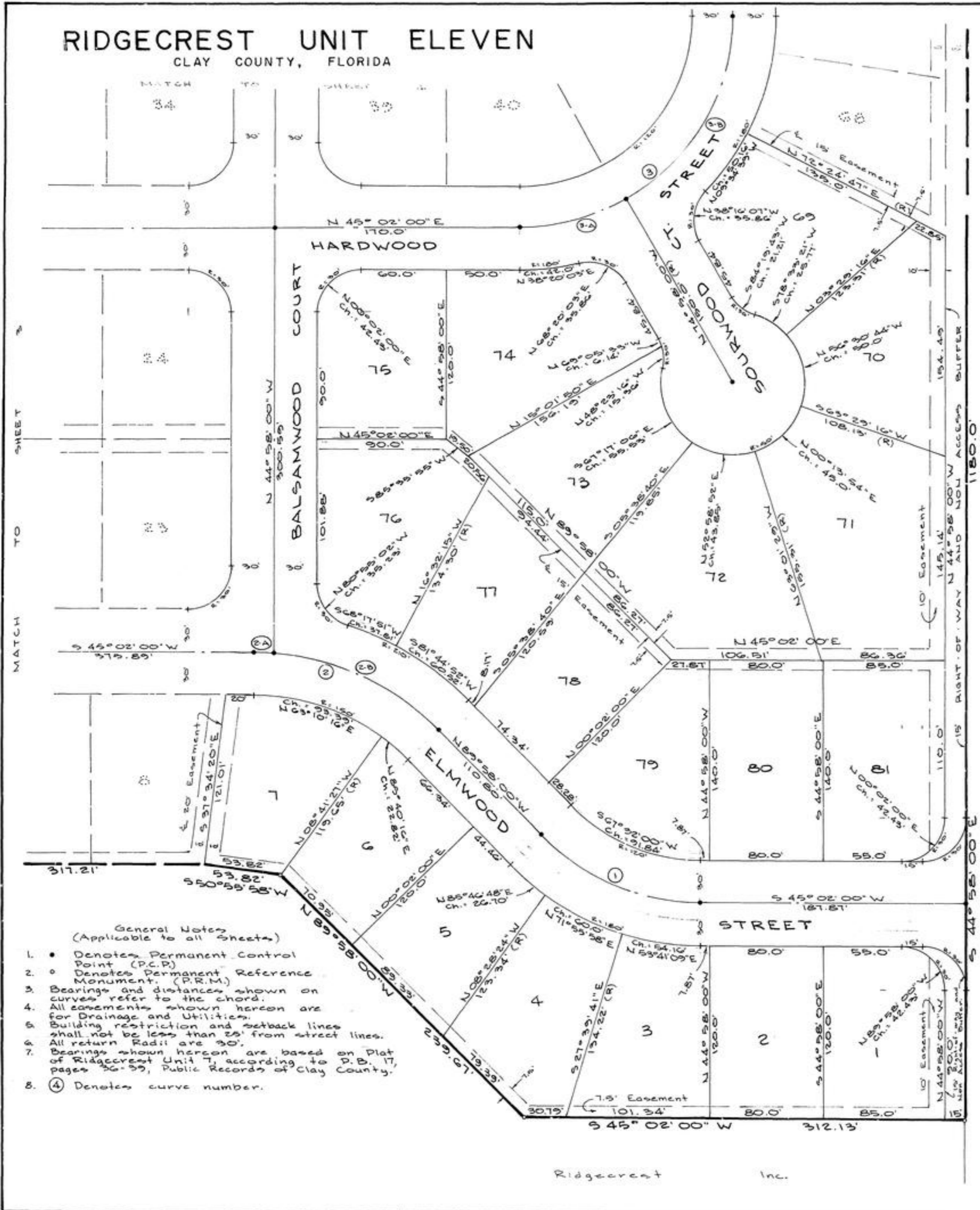
I hereby certify that this plat has been examined and that it complies in form with Chapter No. 71-339, Laws of Florida, and is filed for record in Plat Book 17 Pages 63, 64, 65 & 66 of the Public Records of Clay County, Florida this 26<sup>th</sup> day of April, 1983.

George L. Carlisle, Clerk of the Circuit Court

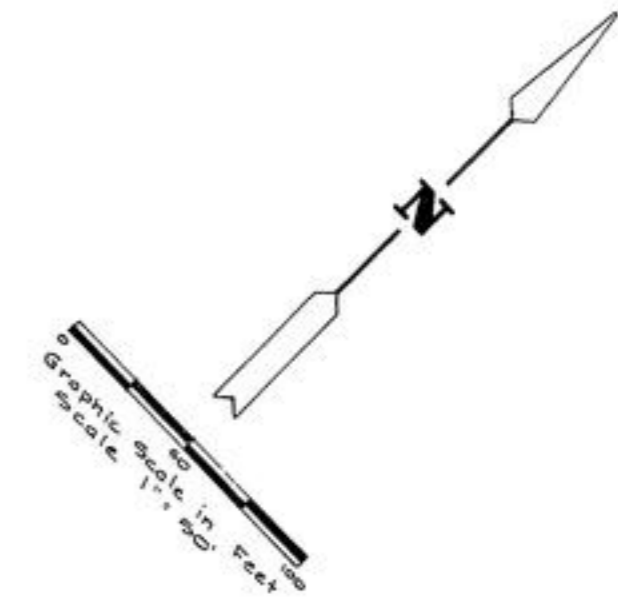
George L. Carlisle  
CLERK

# RIDGECREST UNIT ELEVEN

CLAY COUNTY, FLORIDA



GARFIELD AVE. - Also known as CAMP FRANCIS JOHNSON RD. & BEE LINE DR.



- General Notes  
(Applicable to all Sheets)
- Denotes Permanent Control Point (P.C.P.)
  - Denotes Permanent Reference Monument (P.R.M.)
  - Bearings and distances shown on curves refer to the chord.
  - All easements shown hereon are for Drainage and Utilities.
  - Building restriction and setback lines shall not be less than 25' from street lines.
  - All return Radii are 30'.
  - Bearings shown hereon are based on Plat of Ridgecrest Unit 7, according to P.B. 17, pages 56-59, Public Records of Clay County.
  - ④ Denotes curve number.

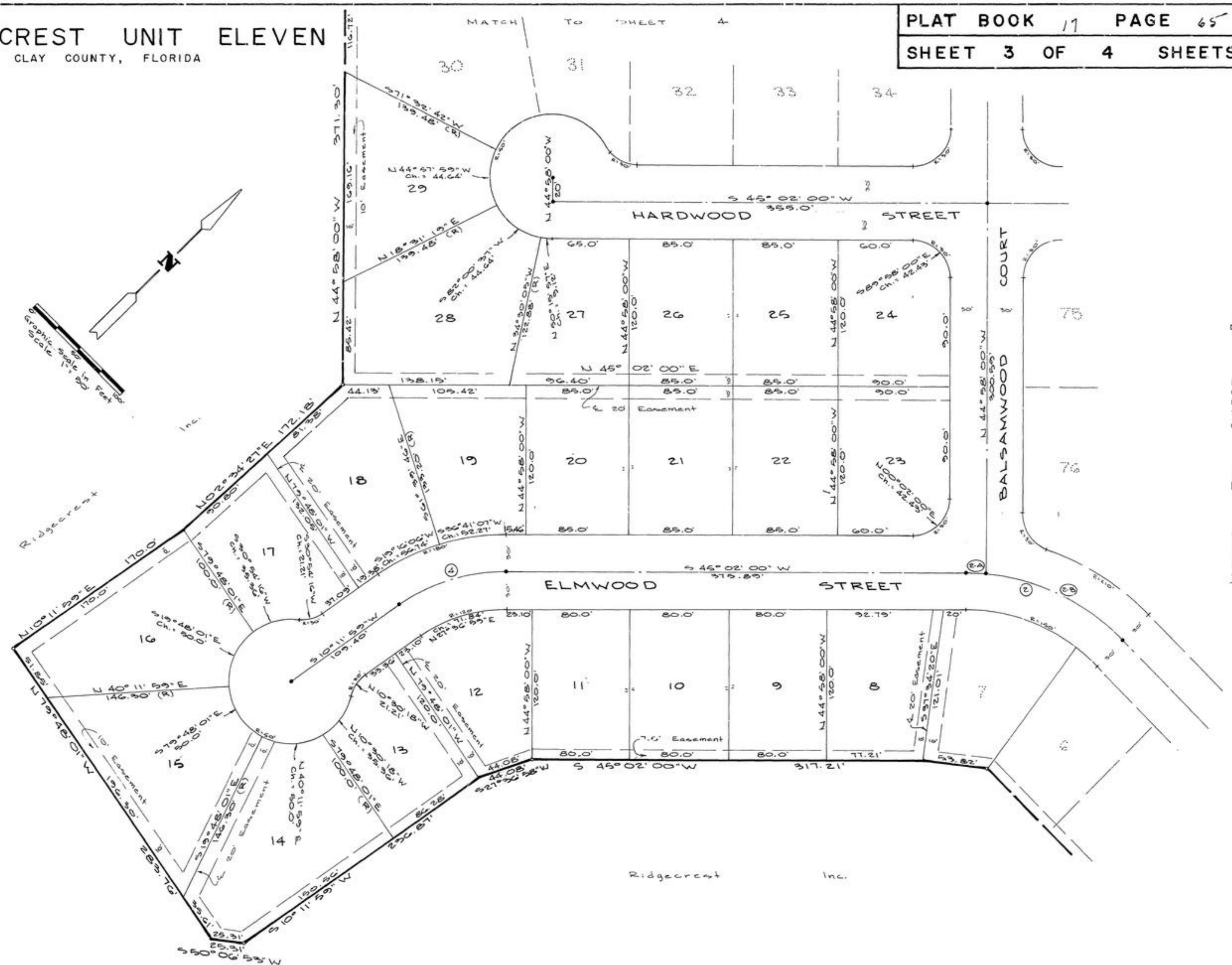
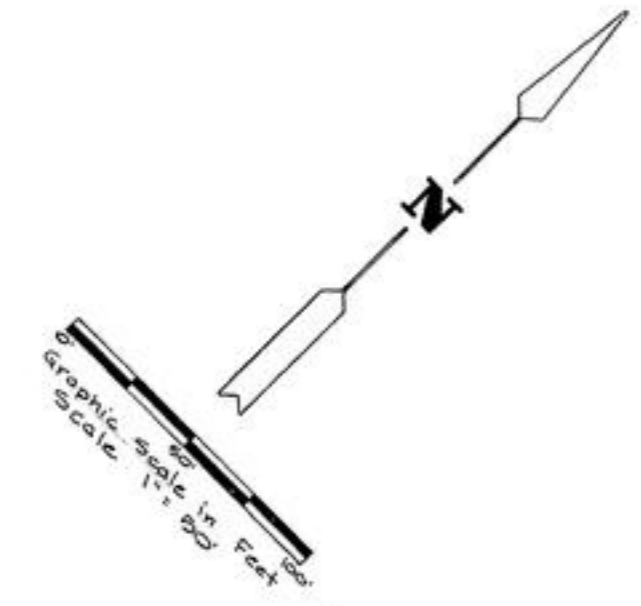
CURVE DATA	
①	Δ 45°00'00" R 150' T 62.13' L 117.81' Ch. 567°32'00"W 114.81'
②	Δ 45°00'00" R 180' T 74.56' L 141.31' Ch. 567°32'00"W 137.77'
②A	Δ 04°38'21" R 180' T 7.29' L 14.57' Ch. 547°21'10"W 14.57'
②B	Δ 40°21'55" R 180' T 66.16' L 126.80' Ch. 565°51'10"W 124.19'
③	Δ 90°00'00" R 150' T 150' L 235.62' Ch. 100°02'00"E 212.13'
③A	Δ 30°00'00" R 150' T 40.19' L 78.54' Ch. 130°02'00"E 77.65'
③B	Δ 60°00'00" R 150' T 86.60' L 157.08' Ch. 114°58'00"W 150'

④	Δ 68°58'10" R 150' T 103.03' L 180.56' Ch. 179°27'08"W 169.86'
⑤	Δ 33°15'21" R 480' T 143.35' L 278.60' Ch. 549°26'10"W 274.70'
⑥	Δ 65°35'13" R 200' T 124.14' L 222.19' Ch. 500°58'53"W 210.94'

Ridgecrest Inc.

# RIDGECREST UNIT ELEVEN

CLAY COUNTY, FLORIDA

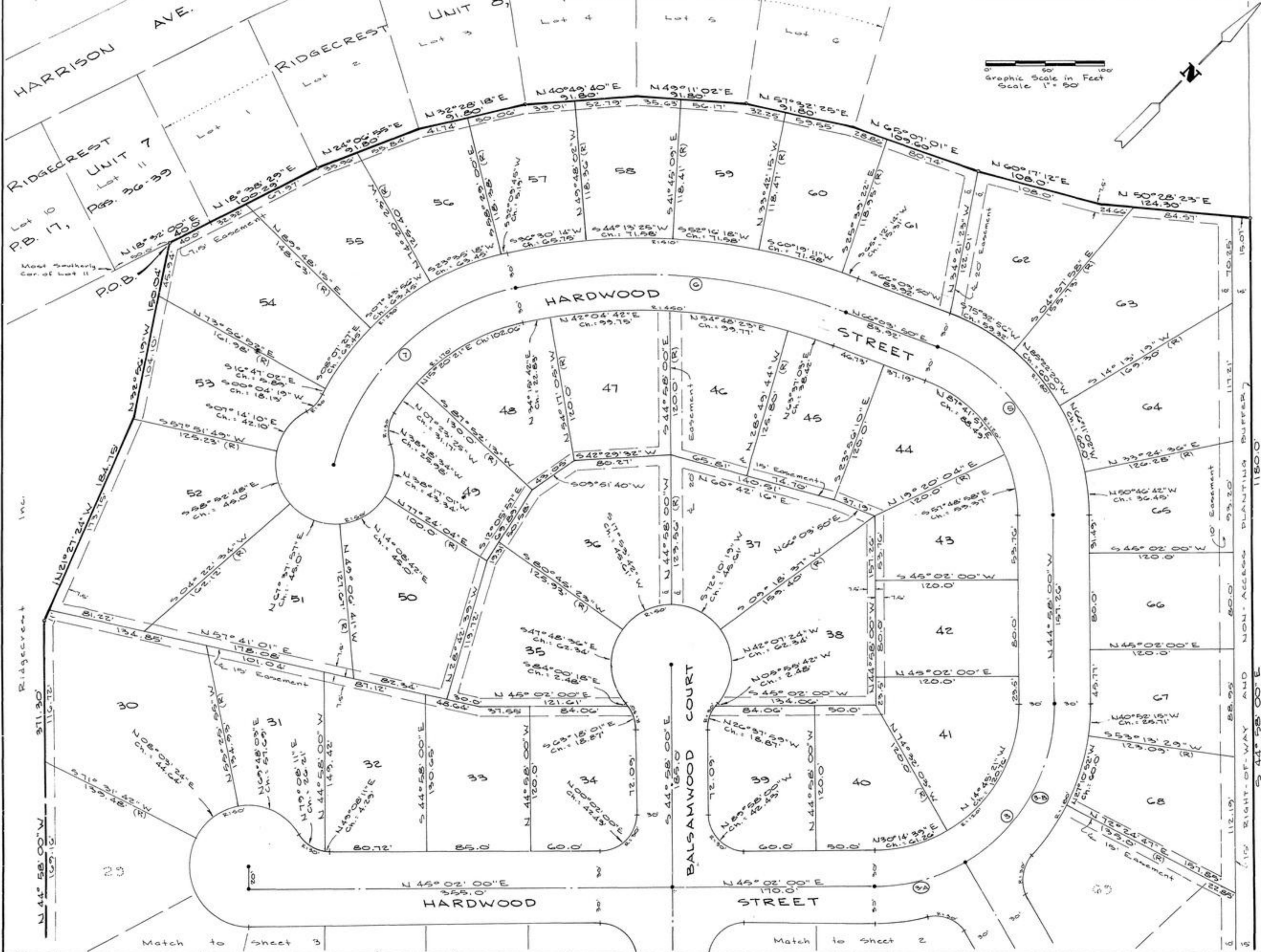


Curve Data

Curve ID	Δ	R	T	L	Ch
②	45° 00' 00"	180'	74.56'	141.37'	567° 32' 00" W 137.77'
	04° 38' 21"	180'	7.29'	14.57'	547° 21' 10" W 14.57'
	40° 21' 39"	180'	66.16'	126.80'	569° 51' 10" W 124.19'
	34° 50' 01"	150'	47.06'	91.19'	527° 37' 00" W 89.80'
	27° 30' 00"	180'	74.56'	141.37'	567° 32' 00" W 137.77'

# RIDGECREST UNIT ELEVEN

CLAY COUNTY, FLORIDA



Garfield Ave. - Also known as Camp Francis Johnson Rd. & Bee Line Dr.