

APPROVED
DATE 8-20-62
BY: John A. Gasky
COUNTY ENGINEER
John A. Gasky
COUNTY ATTORNEY

BRIERWOOD UNIT NO. 1

TAXES VERIFIED
BY R. L. D.

BOOK 32 PAGE 16

Being a subdivision of a part of the Dorcas Black Donation, Section 21, Township 3 South, Range 27 East, Duval County, Florida, being more particularly described as beginning at the Southwesterly corner of San Clerc Estates Unit No. 1 as recorded in Plat Book 31, Pages 50 and 50A, of the Current Public Records of said County; thence North 72°26'10" East along the Southerly boundary of said San Clerc Estates Unit No. 1, 150 feet; thence South 85°10'55" East continuing along said Southerly boundary, 64.89 feet; thence South 85°01' East continuing along said Southerly boundary, 904.90 feet; thence North 4°59' East, 10 feet to the Southwest corner of Lot 12, Block 4 of said San Clerc Estates Unit No. 1; thence South 85°01' East continuing along said Southerly boundary of San Clerc Estates Unit No. 1, 280 feet; thence South 4°59' West, 195 feet; thence South 85°01' East, 20 feet; thence South 4°59' West, 115 feet; thence North 85°01' West, 190 feet; thence North 4°59' East, 3.99 feet; thence North 85°53'10" West, 147.76 feet; thence South 2°26'40" West, 40 feet; thence North 87°32'20" West, 943.30 feet; thence North 17°33'50" West, 338.92 feet to the point of beginning.

ADOPTION AND DEDICATION

This is to certify that KRAMSET CORPORATION, a corporation under the Laws of the State of Florida, is the lawful owner of a portion of the lands described in the caption hereon and that it has caused the same to be surveyed and subdivided and this plat, made in accordance with said survey is hereby adopted as the true and correct plat of said lands and all drives, roads, easements and rights-of-way for drainage and utilities shown on said plat are hereby irrevocably and without reservations dedicated to the County of Duval and its successors.

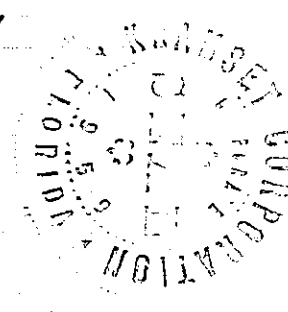
In witness whereof KRAMSET CORPORATION has caused these presents to be signed by its President and Secretary respectively, by and with authority of its Board of Directors, in its name and with its corporate seal affixed this 14 day of August A.D. 1962.

Signed and sealed
in the presence of:

Nancy Locke Witness
Lewis Amelbacher Witness

KRAMSET CORPORATION

Sidney Setzer President
Abe Horovitz Secretary



ADOPTION AND DEDICATION

This is to certify that S.F.D. CORPORATION, a corporation under the Laws of the State of Florida, is the lawful owner of a portion of the lands described in the caption hereon and that it has caused the same to be surveyed and subdivided and this plat, made in accordance with said survey is hereby adopted as the true and correct plat of said lands and all drives, roads, easements and rights-of-way for drainage and utilities shown on said plat are hereby irrevocably and without reservations dedicated to the County of Duval and its successors.

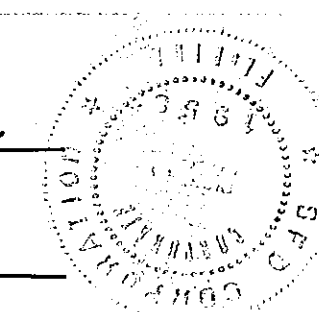
In witness whereof S.F.D. CORPORATION has caused these presents to be signed by its President and Secretary respectively, by and with authority of its Board of Directors, in its name and with its corporate seal affixed this 14 day of August A.D. 1962.

Signed and Sealed
in the presence of:

Nancy Locke
Lewis Amelbacher

S.F.D. CORPORATION

Philip Selber Pres.
Ben Fletcher Sec.



STATE OF FLORIDA COUNTY OF DUVAL

I hereby certify that on this 14 day of August A.D. 1962 personally appeared before me, an officer duly authorized to administer oaths and take acknowledgements, Sidney Setzer and Abe Horovitz respectively, President and Secretary of KRAMSET CORPORATION, a corporation under the Laws of the State of Florida, to me well known to be the persons described in and who executed the foregoing dedication and who severally acknowledged before me that they executed the same freely and voluntarily as such officers for the uses and purposes therein expressed and that they affixed hereto the official seal of said corporation.

Witness my signature and official seal at Jacksonville, in the County of Duval and State of Florida.



Lewis Amelbacher
Notary Public State of Florida at large
My Commission expires March 31, 1963

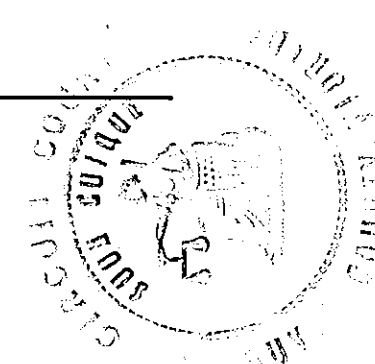
62- 58532

CLERK'S CERTIFICATE

This is to certify that this plat has been examined and that it complies in form with chapter No. 10275, Laws of Florida of 1925, and is filed for record and recorded in Plat Book 32 Pages 16 and 16 A of the Public Records of Duval County, Florida this 14th day of September A.D. 1962.

S. Morgan Slaughter
Clerk

By: L. Helton
Deputy Clerk



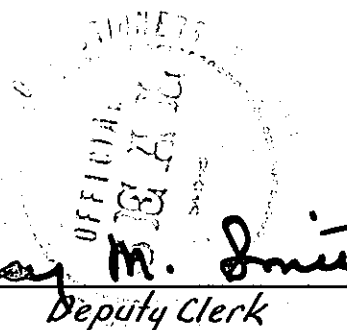
COMMISSIONER'S APPROVAL

Examined and approved this 20 day of Aug. A.D. 1962 by the Board of County Commissioners of Duval County, Florida.

S. Morgan Slaughter
Clerk

Bob Harris
Chairman

Parry M. Smith
Deputy Clerk



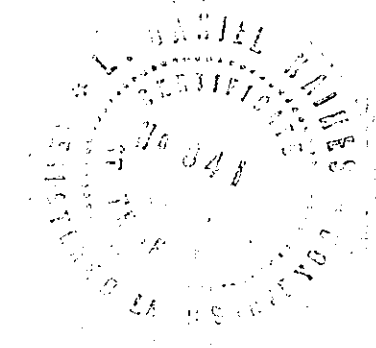
SURVEYOR'S CERTIFICATE

I hereby certify that the above plat is a correct representation of the lands surveyed, platted and described above and that Permanent Reference Monuments have been placed according to the Laws of the State of Florida and that all the Duval County zoning rules and regulations have been complied with.

Signed this 15th day of August A.D. 1962.

R. L. CROASDELLE & CO.

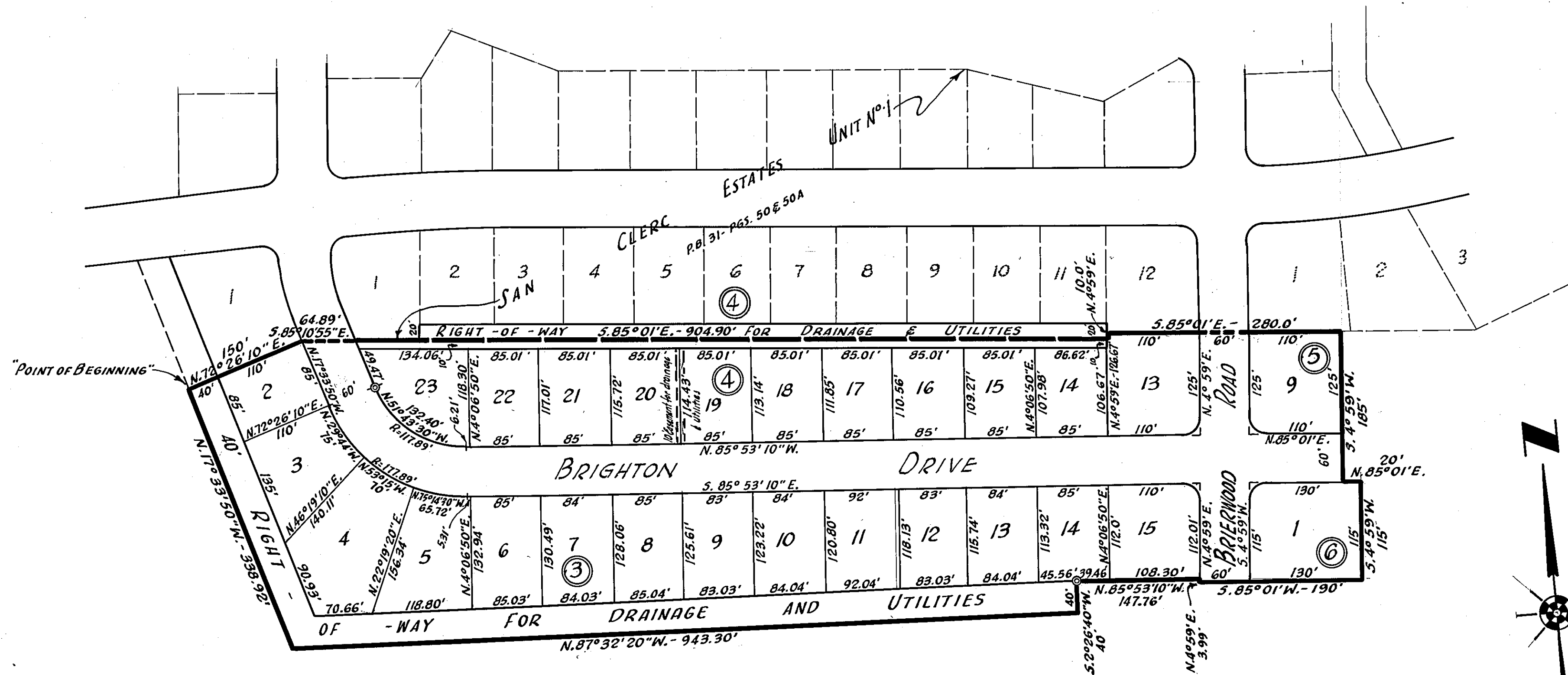
L. Stuart Harris, Jr.
Registered Surveyor Certificate No. 841



BRIERWOOD UNIT NO. 1



GRAPHIC SCALE
Scale in feet: 1"=100'



"NOTES"

Bearings and distances shown on curves are chord bearings and distances
 Building restriction and setback lines shall not be less than 25 feet from street.
 Distances shown on black corners are to street line intersections.
 All radii not shown are 20 feet.
 Permanent Reference Monuments are shown thus: ©