

APPROVED  
DATE 5-13-63  
BY: John O'Leary  
COUNTY ENGINEER  
Max Blount  
COUNTY ATTORNEY

# BRIERWOOD UNIT NO. 2

TAXES VERIFIED  
R L O

Sheet 1 of 2 Sheets

Being a subdivision of a part of the Dorcas Block Donation, Section 21, Township 3 South, Range 27 East, Duval County, Florida, being more particularly described as beginning at the Northwest corner of Lot 9, Block 1, San Clerc Estates Unit No. 1 as recorded in Plat Book 31, Pages 50 and 50A of the Current Public Records of said County; thence North 4°59' East, 271.12 feet; thence North 34°27'05" East, 242.07 feet; thence North 86°00' East, 606.24 feet; thence South 38°23'50" East, 243.16 feet; thence South 63°08'49" East, 550.26 feet to a point in the Westerly boundary of a 40 foot right-of-way for drainage and utilities as shown on said plat of San Clerc Estates Unit No. 1; thence South 13°48'35" West along said Westerly boundary, 41.06 feet; thence South 4°28'41" West continuing along said Westerly boundary, 136.03 feet to the Northeast corner of Lot 8, Block 1 of said plat of San Clerc Estates Unit No. 1; thence South 89°48' West along the Northerly boundary of said Lot 8, 100.49 feet to a point in the Northeast right-of-way line of Philrose Drive as shown on said plat; thence along a curve to the left, said curve having a radius of 90 feet a distance of 95.46 feet as measured along a chord bearing North 31°07'10" West; thence South 26°51'10" East, 60 feet to the Northeast corner of Lot 12, Block 2 of said San Clerc Estates Unit No. 1; thence South 67°43'55" West along the Northwest boundary of said Lot 12, 102.55 feet; thence North 71°46'35" West along the Northerly boundary of said Block 2, 490 feet; thence North 63°01' West continuing along said Northerly boundary, 114.85 feet to the North-west corner of Lot 1, Block 2 of said San Clerc Estates Unit No. 1; thence South 34°52'10" West continuing along said Northerly boundary, 70.11 feet; thence North 85°01' West continuing along said Northerly boundary, 114.85 feet to the North-west corner of Lot 1, Block 2 of said San Clerc Estates Unit No. 1; thence South 80°12'10" West, 62.06 feet to the Northeast corner of said Lot 9, Block 1; thence North 85°01' West along the Northerly boundary of said Lot 9, Block 1, 120 feet to the point of beginning.

### ADOPTION AND DEDICATION

This is to certify that KRAMSET CORPORATION, a corporation under the Laws of the State of Florida, is the lawful owner of a portion of the lands described in the caption hereon and that it has caused the same to be surveyed and subdivided and this plat made in accordance with said survey is hereby adopted as the true and correct plat of said lands and all drives, easements, and rights-of-way for drainage and utilities shown on said plat are hereby irrevocably and without reservations dedicated to the County of Duval and its successors.

In witness whereof KRAMSET CORPORATION has caused these presents to be signed by its President and Secretary respectively, by and with authority of its Board of Directors, in its name and with its corporate seal affixed this 5th day of October A.D. 1962.  
Signed and sealed  
in the presence of:

Robert D. Eggen Witness  
Annette E. Williams Witness

"KRAMSET CORPORATION"  
Sidney Setzer  
President  
Ben Fletcher  
Secretary

### ADOPTION AND DEDICATION

This is to certify that S.F.D. CORPORATION, a corporation under the Laws of the State of Florida, is the lawful owner of a portion of the lands described in the caption hereon and that it has caused the same to be surveyed and subdivided and this plat made in accordance with said survey is hereby adopted as the true and correct plat of said lands and all drives, easements, and rights-of-way for drainage and utilities shown on said plat are hereby irrevocably and without reservations dedicated to the County of Duval and its successors.

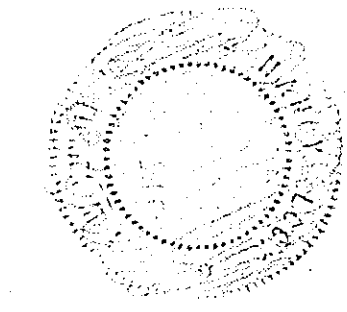
In witness whereof S.F.D. CORPORATION has caused these presents to be signed by its President and Secretary respectively, by and with authority of its Board of Directors, in its name and with its corporate seal affixed this 5th day of October A.D. 1962.  
Signed and sealed  
in the presence of:

Nancy Locke Witness  
Robert D. Eggen Witness

"SFD CORPORATION"  
Philip Selber  
President  
Ben Fletcher  
Secretary

### STATE OF FLORIDA COUNTY OF DUVAL

I hereby certify that on this 5th day of October A.D. 1962, personally appeared before me, an officer duly authorized to administer oaths and take acknowledgements, Sidney Setzer and Ben Fletcher, respectively President and Secretary of KRAMSET CORPORATION, a corporation under the Laws of the State of Florida, to me well known to be the persons described in and who executed the foregoing dedication and who severally acknowledged before me that they executed the same freely and voluntarily as such officers for the uses and purposes therein expressed and that they affixed hereto the official seal of said corporation.  
Witness my signature and official seal at Jacksonville, in the County of Duval and State of Florida.



Nancy Locke  
Notary Public State of Florida at large  
My Commission expires July 10, 1966

### STATE OF FLORIDA COUNTY OF DUVAL

I hereby certify that on this 5th day of October A.D. 1962, personally appeared before me, an officer duly authorized to administer oaths and take acknowledgements, Philip Selber and Ben Fletcher, respectively President and Secretary of S.F.D. CORPORATION, a corporation under the Laws of the State of Florida, to me well known to be the persons described in and who executed the foregoing dedication and who severally acknowledged before me that they executed the same freely and voluntarily as such officers for the uses and purposes therein expressed and that they affixed hereto the official seal of said corporation.  
Witness my signature and official seal at Jacksonville, in the County of Duval and State of Florida.

Nancy Locke  
Notary Public State of Florida at large  
My Commission expires July 10, 1966

### COMMISSIONER'S APPROVAL

Examined and approved this 13th day of May A.D. 1963 by the Board of County Commissioners of Duval County, Florida.

S. Morgan Slaughter Clerk  
Tom Merrill Chairman  
Henry M. Smith Deputy Clerk

63-29586

### CLERK'S CERTIFICATE

This is to certify that this plat has been examined and that it complies in form with Chapter No. 10275, Laws of Florida of 1925 and is filed for record and recorded in Plat Book 32 Pages 51 and 52A of the Public Records of Duval County, Florida this 16th day of May A.D. 1963.

S. Morgan Slaughter  
Clerk

By: R. L. Croasdel  
Deputy Clerk

R. L. CROASDELL & CO. (NOT INC.)

Richard H. Hines  
Registered Surveyor Certificate No. 841

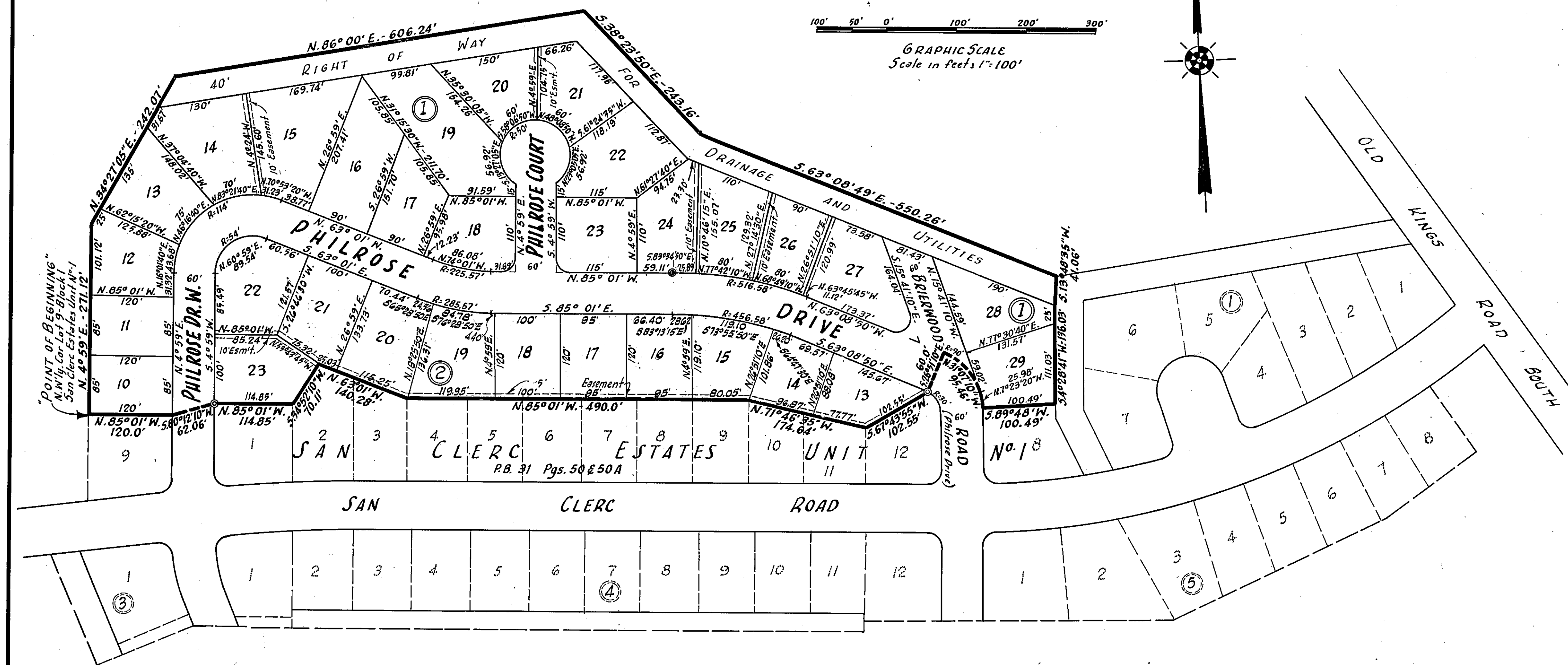
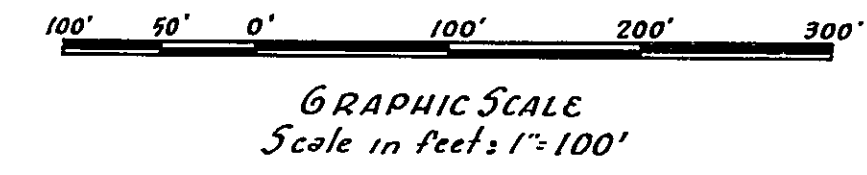
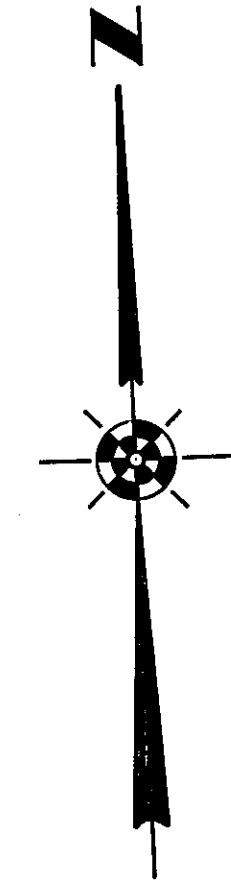


# BRIERWOOD UNIT NO. 2

DIVAL COUNTY FLORIDA

BOOK 32 PAGE 52A

Sheet 2 of 2 Sheets



**"NOTES"**

1. Bearings and distances shown on curves are chord bearings and distances.
2. Distances shown on block corners are to street line intersections.
3. Building restriction and setback lines shall not be less than 25ft. from street.
4. All radii not shown are 20 feet.
5. All easements shown hereon are for drainage and utility purposes.
6. Permanent Reference Monuments are shown thus: ⊙