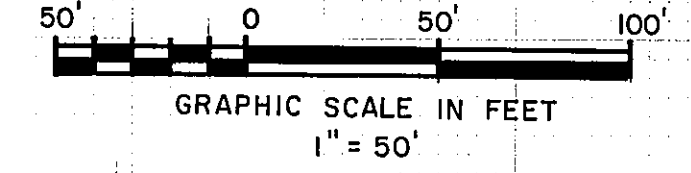
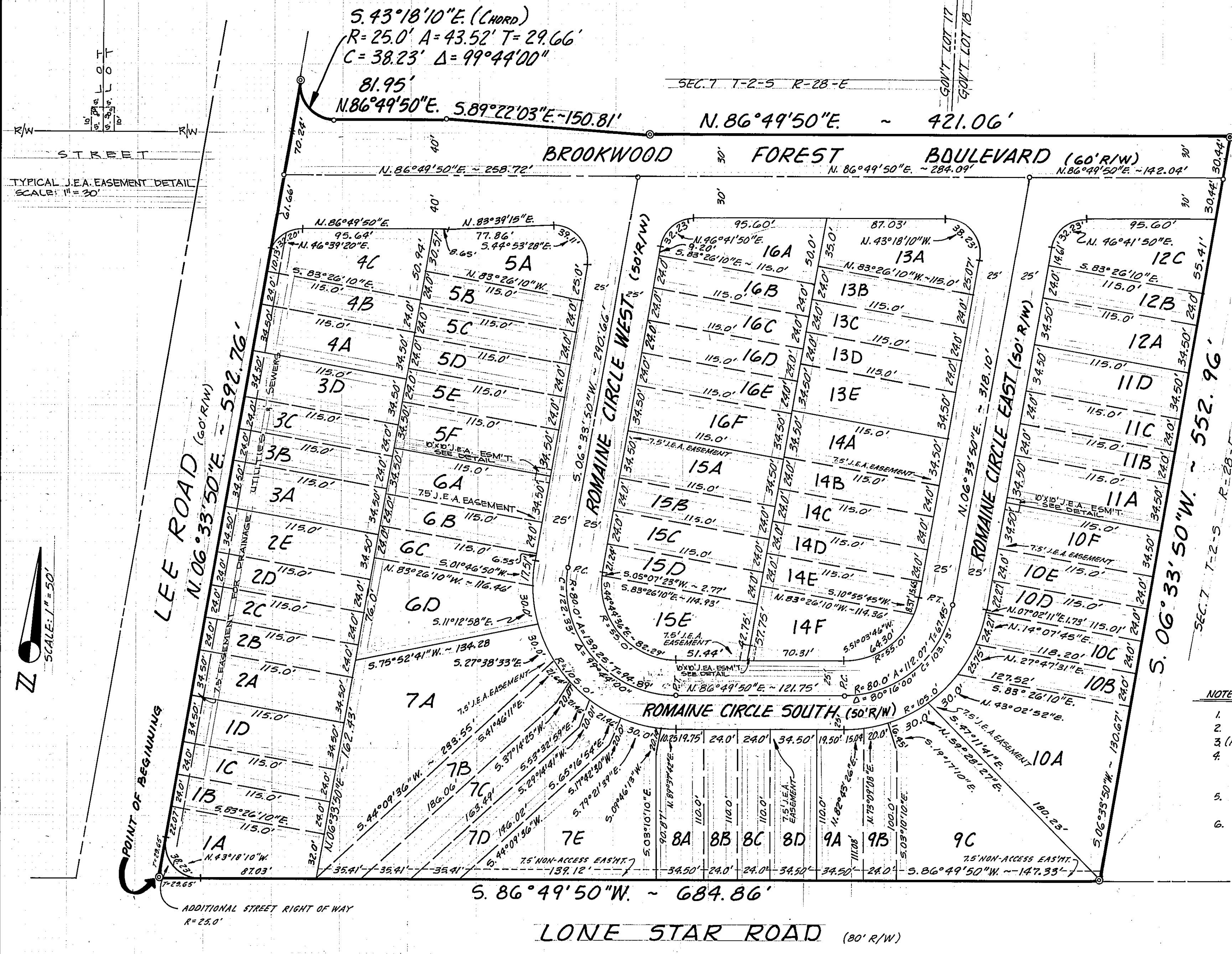


BROOKWOOD FOREST

CITY OF JACKSONVILLE, DUVAL COUNTY, FLORIDA



AREAS			
LOT	AREA	LOT	AREA
1A	4,616	10C	2,787
1B	2,760	10D	2,760
1C	2,760	10E	2,760
1D	3,967	10F	3,967
2A	3,967	11A	3,967
2B	2,760	11B	2,760
2C	2,760	11C	2,760
2D	2,760	11D	3,967
2E	3,967	11E	3,967
3A	3,967	11F	2,760
3B	2,760	12A	5,149
3C	2,760	12B	4,961
3D	3,967	12C	2,760
4A	3,967	12D	2,760
4B	2,760	12E	2,760
4C	4,634	12F	2,760
5A	4,746	13A	3,967
5B	2,760	13B	2,760
5C	2,760	13C	2,760
5D	2,760	13D	2,760
5E	2,760	13E	2,760
5F	3,967	13F	5,076
6A	3,967	14A	3,967
6B	2,760	14B	2,760
6C	2,760	14C	2,760
6D	6,415	14D	2,760
7A	13,508	14E	2,760
7B	5,240	14F	4,526
7C	4,642	15A	2,760
7D	4,173	15B	2,760
7E	8,932	15C	2,760
8A	3,754	15D	2,760
8B	2,640	15E	2,759
8C	2,640	16A	5,094
8D	3,795	16B	4,526
9A	3,800	16C	2,760
9B	2,690	16D	2,760
9C	10,871	16E	2,760
10A	11,013	16F	3,967
10B	2,335		

- NOTES:**
1. DENOTES PERMANENT REFERENCE MONUMENT.
 2. DENOTES PERMANENT CONTROL POINT.
 3. (R) DENOTES RADIAL LINE.
 4. BEARINGS SHOWN HEREON PROJECTED FROM DEED RECORDED IN O.R. VOL. 5478, PG. 999, CURRENT PUBLIC RECORDS.
 5. ALL RADII SHOWN ARE 25 FT. UNLESS OTHERWISE INDICATED.
 6. COURSE AND DISTANCE SHOWN ON CURVILINEAR LINES REFER TO THE CHORD.

Ckd. 5-14-85
 City Eng. made 9-26-85