

# Eagles Hammock - Unit One

PLAT BOOK 56 PAGE 91  
SHEET 1 OF 9 SHEETS

A Portion of Government Lots 1 and 2, lying in Section 23, Township 1 North, Range 27 East, City of Jacksonville, Duval County, Florida.

**CAPTION**

A PARCEL OF LAND BEING A PORTION OF GOVERNMENT LOTS 1 AND 2 LYING IN SECTION 23, TOWNSHIP 1 NORTH, RANGE 27 EAST, CITY OF JACKSONVILLE, DUVAL COUNTY, FLORIDA, AND BEING MORE PARTICULARLY DESCRIBED AS FOLLOWS:

BEGIN AT THE INTERSECTION OF THE NORTH LINE OF SAID SECTION AND THE EASTERLY RIGHT OF WAY LINE OF YELLOW BLUFF ROAD (A 100 FOOT RIGHT OF WAY AS NOW ESTABLISHED); THENCE NORTH 89°53'08" EAST, ALONG SAID NORTH LINE OF SECTION 23, A DISTANCE OF 1672.50 FEET, TO A POINT LYING ON THE WEST LINE OF CHARLES SETON GRANT; THENCE SOUTH 01°10'10" EAST, ALONG SAID WEST LINE, A DISTANCE OF 1517.05 FEET TO A POINT; THENCE SOUTH 54°53'34" WEST, A DISTANCE OF 220.12 FEET, TO A POINT; THENCE SOUTH 29°10'42" WEST, A DISTANCE OF 56.38 FEET, TO A POINT; THENCE SOUTH 58°37'59" WEST, A DISTANCE OF 212.91 FEET, TO A POINT; THENCE SOUTH 21°17'16" EAST, A DISTANCE OF 48.91 FEET, TO A POINT; THENCE SOUTH 54°07'27" EAST, A DISTANCE OF 23.21 FEET, TO A POINT; THENCE NORTH 75°10'10" WEST, A DISTANCE OF 213.83 FEET, TO A POINT; THENCE SOUTH 72°09'25" WEST, A DISTANCE OF 109.54 FEET, TO A POINT; THENCE SOUTH 74°40'04" WEST, A DISTANCE OF 94.87 FEET, TO A POINT; THENCE SOUTH 90°00'00" WEST, A DISTANCE OF 951.60, TO A POINT LYING ON THE FOREMENTIONED EASTERLY RIGHT OF WAY LINE OF YELLOW BLUFF ROAD; THENCE NORTH 00°06'17" EAST, A LONG SAID EASTERLY RIGHT OF WAY LINE, A DISTANCE OF 1863.13 FEET, TO THE POINT OF BEGINNING.

**ADOPTION AND DEDICATION**

This is to certify that the undersigned, D.R. HORTON, INC. - JACKSONVILLE, a Delaware Corporation, under the laws of the state of Florida, are the lawful owners of the lands described in the caption hereon, known as EAGLES HAMMOCK - UNIT ONE, having caused the same to be surveyed and subdivided. This plat, being made in accordance with said survey is hereby adopted as a true and correct plat of those lands. All Roads, Parkways, Lanes, Courts, Walkways, Drainage easements, unobstructed Drainage easements, and unobstructed access easements and drainage easements, are hereby irrevocably and without reservation dedicated to the City of Jacksonville, its successors and assigns. The drainage easements over, under, across and through the lake/stormwater management facilities, as shown on this plat, are hereby irrevocably dedicated to the City of Jacksonville, its successors and assigns, and are subject to the following covenants which shall run with the land:

- 1) The drainage easements hereby dedicated shall permit the City of Jacksonville, its successors and assigns to discharge into said lake/stormwater management facilities which these easement's traverse, all water which may fall on or come upon the roads or parkways, lanes and courts as noted above hereby dedicated, together with all substances or matters which may flow or pass from (roads, parkways, lanes and courts); from adjacent land or from any other source of public waters into or through said lake/stormwater management facilities, with out any liability whatsoever on the part of the City of Jacksonville, its successors and assigns.
- 2) The lake/stormwater management facility shown on this plat are owned in fee simple title by the abutting owners, their successors and assigns, and all maintenance and any other matters pertaining to said lake/stormwater management facilities are the responsibility of the owners, their successors and assigns. the City of Jacksonville by acceptance of this plat assumes no responsibility whatsoever for said lake/stormwater management facilities.
- 3) The City of Jacksonville, its successors and assigns, shall not be liable nor responsible for the creation, operation, failure or destruction of water level control equipment which may be constructed or installed by the developer or any other person within the area of the lands hereby platted, or of the lake/stormwater management facilities and the control structures to effect adequate drainage.

The owners, their successors and assigns of the lands described and captioned hereon, shall indemnify the City of Jacksonville and save it harmless from suits, action, damages and liability and expense in connection with loss of life, bodily or personal injury or property damage or any other damage arising from or out of any occurrence in, upon, at or from the lake/stormwater management facilities described above, or any part thereof, occasioned wholly or in part by any act of omission of its agent, contractors, employees, servants, licensees or concessionaires within EAGLES HAMMOCK - UNIT ONE. This indemnification shall run with the land and the successors and assigns of the owner and shall be subject to it.

The undersigned owners do hereby reserve unto themselves and assigns an easement for landscaping and construction of signs over all non-access easements, and also over all of the lands designated as private drainage easements shown on this plat, the maintenance responsibilities of which shall be those of the owners, their successors and assigns.

All platted utility easements shall provide that such easements also be easements for the construction, installation, maintenance, and operation of cable television services; provided, however, no such construction, installation, maintenance, and operation of cable television services shall interfere with the facilities and services of an electric, telephone, gas, or other public utility, in the event a cable television company damages the facility of a public utility, it shall be solely responsible for the damages. this section shall not apply to those private easements granted to or obtained by a particular electric, telephone, gas or other public utility. such construction, installation, maintenance, and operation shall comply with the national electrical safety code as adopted by the Florida public service commission. Florida Statutes 177.09(28)

Tracts "C-1" and "C-2" (Conservation Area) shall remain privately owned and the sole exclusive property of D.R. HORTON, INC. - JACKSONVILLE, a Delaware Corporation, its successors and assigns.

Tract "L" (Lift Station), is hereby irrevocably dedicated to the JEA, its successors and assigns, for its non-exclusive uses in conjunction with its water and sewer systems.

Tracts "R" (Park Area) shall remain privately owned and the sole exclusive property of D.R. HORTON, INC. - JACKSONVILLE, a Delaware Corporation, its successors and assigns.

Those easements designated as "UTILITY EASEMENTS" are irrevocably dedicated to JEA, its successors and assigns, for its exclusive use.

Those easements designated as "JEA-EE" are irrevocably dedicated to JEA, its successors and assigns, for its exclusive use in conjunction with its underground electrical system.

Those easements designated as "JEA-E" are irrevocably dedicated to JEA, its successors and assigns, for its exclusive use in conjunction with its underground electrical system; provided however, that no parallel utilities may be installed within said easements.

NOTICE: This plat, as recorded in its graphic form, is the official depiction of the subdivided lands described herein and will in no circumstances be supplanted in authority by any other graphic or digital form of the plat. There may be additional restrictions that are not recorded on this plat that may be found in the public records of this county. Florida Statutes 177.091(27)

In witness whereof, the above D.R. HORTON, INC. - JACKSONVILLE, a Delaware Corporation, has caused these presents to be signed by its Vice President, Land Development this 16th day of March, A.D. 2004.

DEVELOPER  
**D.R. HORTON, INC. - JACKSONVILLE**  
A DELAWARE CORPORATION

WITNESS: Reggie Norris  
+ Reggie Norris

WITNESS: Kenneth L. Johns Jr.  
Kenneth L. Johns Jr.

NOTARY FOR D.R. HORTON, INC. - JACKSONVILLE  
A DELAWARE CORPORATION

STATE OF FLORIDA  
COUNTY OF DUVAL  
THE FOREGOING INSTRUMENT WAS ACKNOWLEDGED BEFORE ME THIS 16 DAY OF March, A.D. 2004, BY JAN J. DOAN, VICE PRESIDENT, LAND DEVELOPMENT OF D.R. HORTON, INC. - JACKSONVILLE, A DELAWARE CORPORATION, WHO IS PERSONALLY KNOWN TO ME AND NO OATH WAS TAKEN.

Arlene Forbrich  
NOTARY PUBLIC, STATE OF FLORIDA  
Arlene Forbrich  
TYPE OR PRINT NAME  
MY COMMISSION EXPIRES:



**APPROVED FOR RECORD**

THIS IS TO CERTIFY THAT THE ABOVE PLAT HAS BEEN EXAMINED, ACCEPTED AND APPROVED BY THE CITY OF JACKSONVILLE, DUVAL COUNTY, FLORIDA, PURSUANT TO CHAPTER NO. 654, ORDINANCE CODE. THIS 25th DAY OF MARCH, A.D. 2004.

Alan McEntee  
DIRECTOR OF PUBLIC WORKS

**CLERK'S CERTIFICATE** 2004 106 164

THIS IS TO CERTIFY THAT THIS PLAT HAS BEEN EXAMINED, ACCEPTED AND APPROVED BY THE CITY OF JACKSONVILLE, FLORIDA AND SUBMITTED TO ME FOR THE RECORDING, AND IS RECORDED IN PLAT BOOK 56, PAGES 91-91H OF THE CURRENT PUBLIC RECORDS OF DUVAL COUNTY, FLORIDA THIS 30th DAY OF MARCH, A.D. 2004.

Jim Fuller  
JIM FULLER, CLERK OF THE CIRCUIT COURT

Robin Beulen  
DEPUTY CLERK

**PLAT CONFORMITY REVIEW**

THIS PLAT HAS BEEN REVIEWED AND FOUND IN COMPLIANCE WITH PART I, CHAPTER 177, FLORIDA STATUTES, THIS 22nd DAY OF March, A.D. 2004.

Glenn E. McGregor, PLS  
GLENN E. MCGREGOR, PLS  
PROFESSIONAL LAND SURVEYOR NUMBER 4252

**SURVEYOR'S CERTIFICATE**

THIS IS TO CERTIFY THAT THIS PLAT IS A TRUE AND CORRECT REPRESENTATION OF THE LANDS SURVEYED, PLATTED AND DESCRIBED IN THE CAPTION, THAT THE SURVEY WAS MADE UNDER THE UNDERSIGNED'S RESPONSIBLE DIRECTION AND SUPERVISION, THAT THE SURVEY DATA COMPLIES WITH ALL THE REQUIREMENTS OF FLORIDA STATUTE 177, THAT PERMANENT REFERENCE MONUMENTS (PRM), PERMANENT CONTROL POINTS (PCP), AND LOT CORNERS HAVE BEEN OR WILL BE MONUMENTED IN ACCORDANCE WITH CHAPTER 177.091, FLORIDA STATUTES, CHAPTER 6811-6.003, FLORIDA ADMINISTRATIVE CODE, AND SECTION 654.110, ORDINANCE CODE OF THE CITY OF JACKSONVILLE, FLORIDA.

CERTIFIED THIS 15 DAY OF MARCH, A.D. 2004.

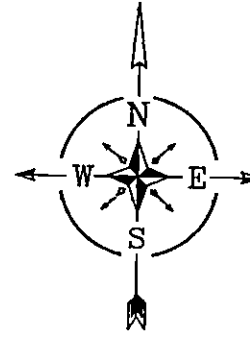
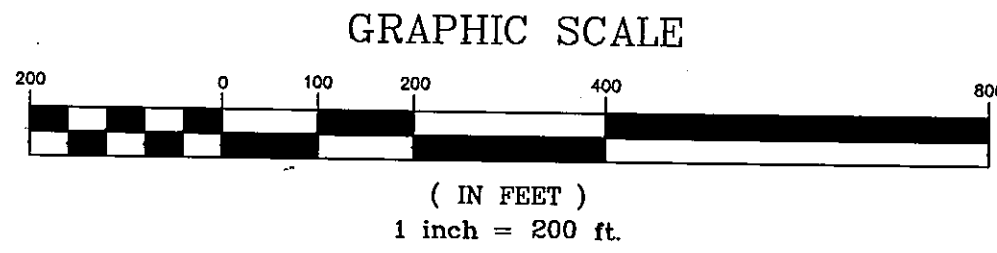
Jonathan B. Bowman  
JONATHAN B. BOWMAN  
PROFESSIONAL LAND SURVEYOR No. 4600  
7450 Belfort Parkway, Suite 1600  
Jacksonville, Florida 32256

**A & J LAND SURVEYORS, INC.**  
Professional Land Surveyors  
7450 Belfort Parkway, Suite 1600  
Jacksonville, Florida 32256  
Fax (904) 246-1644  
Phone (904) 246-1666 L.B. No. 6661

Approved 3/22/04  
Date  
John P. Rogers  
City Engineer  
for Director of Public Works  
Approved 3/24/04  
Date  
[Signature]  
for General Counsel JSF

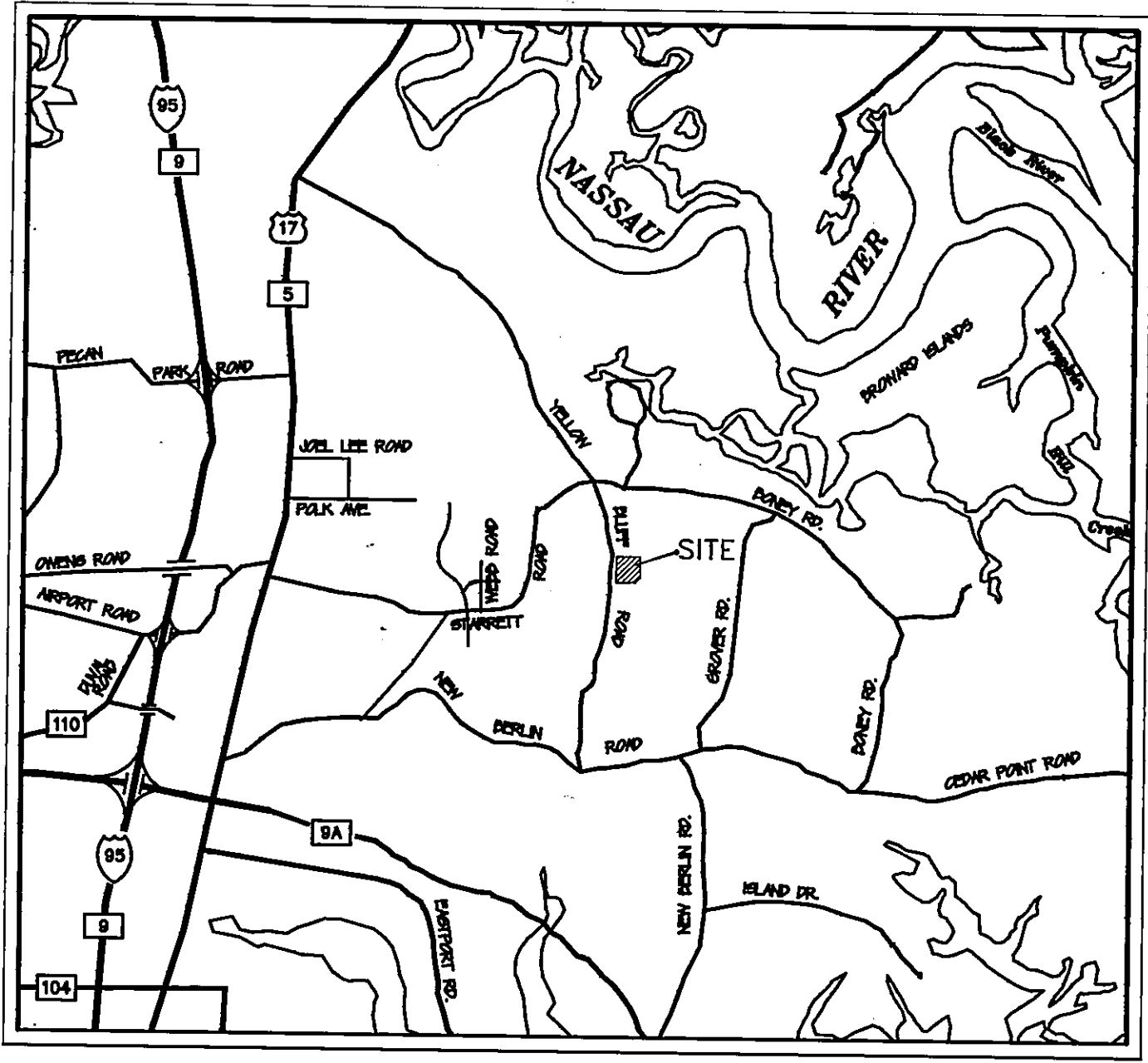
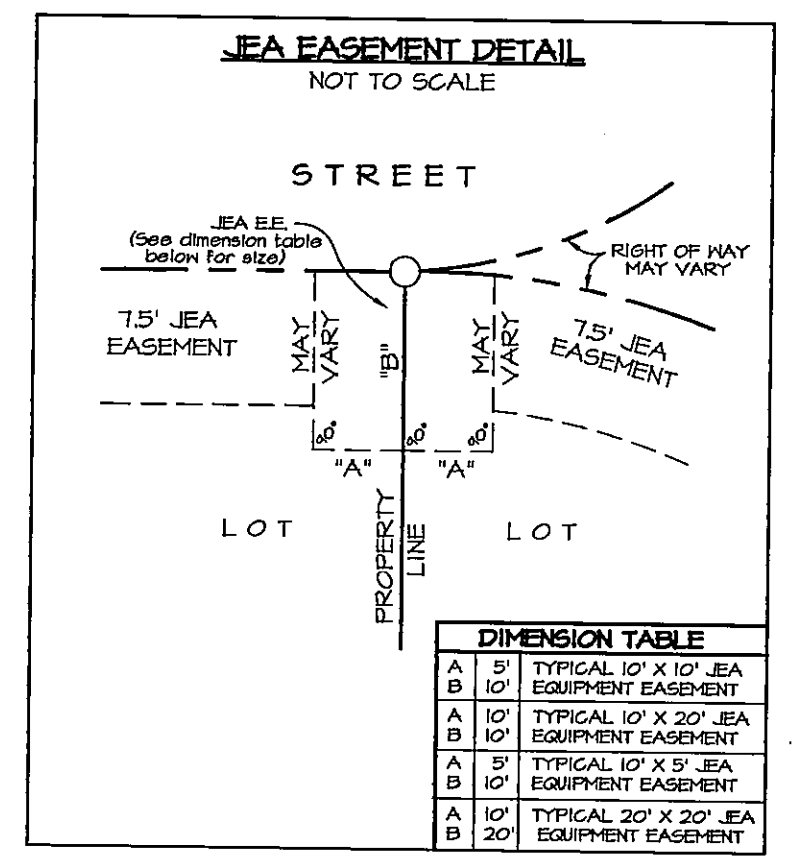
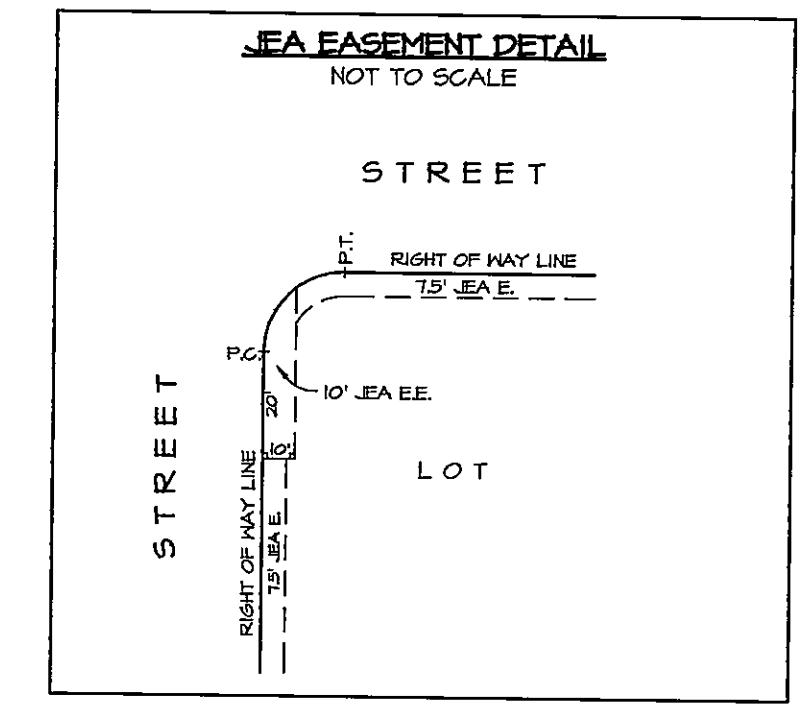
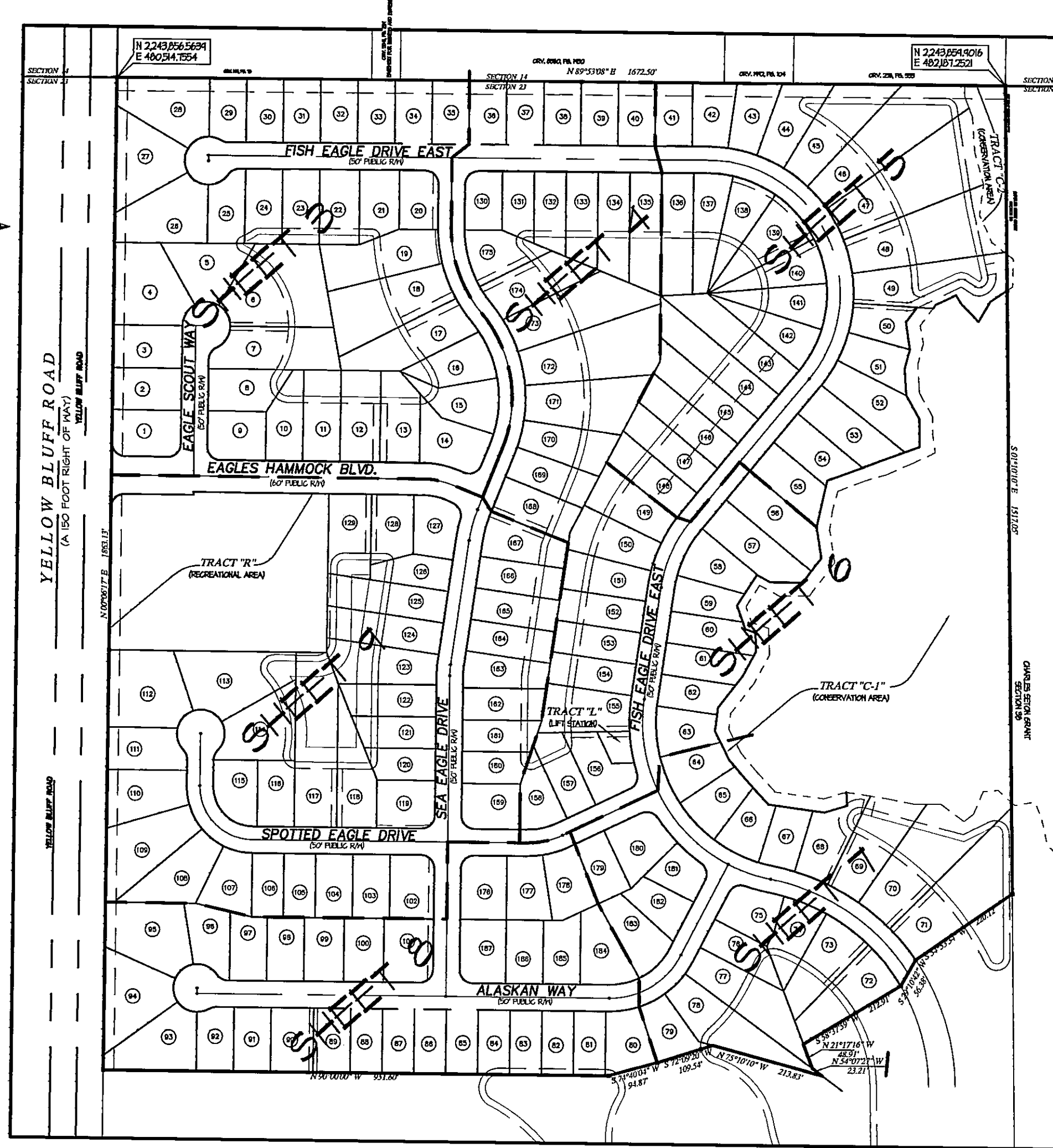
# Eagles Hammock - Unit One

A Portion of Government Lots 1 and 2, lying in  
Section 23, Township 1 North, Range 27 East,  
City of Jacksonville, Duval County, Florida.



### GENERAL NOTES

- BASIS OF BEARINGS:**
- STATE PLANE CO-ORDINATES SHOWN HEREON ARE BASED ON NORTH AMERICAN DATUM (NAD) 1983 (FRO). STATION NAMES ARE AS FOLLOWS:  
STATION NAME: JEA 0105  
STATION NAME: JEA 0118
  - THE EASEMENTS SHOWN HEREON AND DESIGNATED AS UNOBSTRUCTED EASEMENTS SHALL REMAIN TOTALLY UNOBSTRUCTED BY ANY PERMANENT IMPROVEMENTS WHICH MAY IMPEDE THE USE OF SAID EASEMENT BY THE CITY OF JACKSONVILLE. THE CONSTRUCTION OF DRIVEWAYS AND THE INSTALLATION OF FENCES, HEDGES AND LANDSCAPING IS PERMISSIBLE BUT SUBJECT TO REMOVAL BY THE CITY AT THE EXPENSE OF EACH LOT OWNER FOR THE REMOVAL AND/OR REPLACEMENT OF SUCH ITEMS.
  - THE EASEMENTS SHOWN HEREON AND DESIGNATED AS UNOBSTRUCTED ACCESS EASEMENTS SHALL REMAIN TOTALLY UNOBSTRUCTED BY ANY IMPROVEMENTS THAT MAY IMPEDE THE USE AND ACCESS OF SAID EASEMENT BY THE CITY OF JACKSONVILLE.
  - EASEMENTS SHOWN HEREON ARE FOR DRAINAGE, UTILITIES AND SEWERS, UNLESS OTHERWISE NOTED.
  - ALL DRAINAGE EASEMENTS ARE UNOBSTRUCTED UNLESS OTHERWISE NOTED.
  - THE TABULATED LINE AND CURVE TABLES SHOWN ON EACH SHEET ARE APPLICABLE ONLY TO THE LINES AND CURVES THAT APPEAR ON THAT SHEET.
  - ALL FLATTED UTILITY EASEMENTS SHALL ALSO BE EASEMENTS FOR THE CONSTRUCTION, INSTALLATION, MAINTENANCE, AND OPERATION OF CABLE TELEVISION SERVICES. PROVIDED HOWEVER, NO SUCH CONSTRUCTION, INSTALLATION, MAINTENANCE, AND OPERATION OF CABLE TELEVISION SERVICES SHALL INTERFERE WITH THE FACILITIES AND SERVICES OF AN ELECTRIC, TELEPHONE, GAS, OR OTHER PUBLIC UTILITY.
  - NOTICE: THIS PLAT, AS RECORDED IN ITS GRAPHIC FORM, IS THE OFFICIAL DEPICTION OF THE SUBDIVIDED LANDS DESCRIBED HEREIN AND WILL IN NO CIRCUMSTANCES BE SUPPLANTED IN AUTHORITY BY ANY OTHER GRAPHIC OR DIGITAL FORM OF THE PLAT, WHETHER GRAPHIC OR DIGITAL. THERE MAY BE ADDITIONAL RESTRICTIONS NOT RECORDED ON THIS PLAT THAT MAY BE FOUND IN THE PUBLIC RECORDS OF DUVAL COUNTY, FLORIDA.
  - CERTAIN EASEMENTS ARE RESERVED FOR JEA FOR USE IN CONJUNCTION WITH THE UNDERGROUND DISTRIBUTION SYSTEM.
  - "JEA E.E." DENOTES JEA EQUIPMENT EASEMENT. THESE EASEMENTS SHALL REMAIN TOTALLY UNOBSTRUCTED BY ANY IMPROVEMENTS THAT MAY IMPEDE THE USE AND ACCESS OF SAID EASEMENT BY JEA.
  - "JEA E." DENOTES JEA EASEMENT. JEA WILL ALLOW CERTAIN NON-PERMANENT IMPROVEMENTS WHICH DO NOT IMPEDE THE USE OF SAID EASEMENTS BY JEA, THE INSTALLATION OF FENCES, HEDGES, AND LANDSCAPING IS PERMISSIBLE BUT SUBJECT TO REMOVAL BY JEA AT THE EXPENSE OF EACH LOT OWNER FOR THE REMOVAL AND FOR REPLACEMENT OF SUCH ITEMS.
  - (100.00') DENOTES DISTANCE TO EASEMENTS OR VEGETATED NATURAL BUFFERS.
  - THE LANDS SHOWN HEREON LIE WITHIN FLOOD ZONE (X INHAZED) AS DEPICTED ON THE FLOOD INSURANCE RATE MAP (FIRM) COMMUNITY NUMBER 120077, PANEL NUMBER 171, SUFFIX E, DATED AUGUST 15, 1994. THE FIRM INFORMATION AND DELINEATIONS ON THIS PLAT ARE VALID ONLY FOR DATES UP TO AND INCLUDING THE EFFECTIVE RECORDING DATE OF THIS PLAT. THERE MAY HAVE BEEN SUBSEQUENT REVISIONS AFTER THIS DATE THAT WILL SUPERSEDE SAID INFORMATION. INQUIRIES FOR THIS SHOULD BE MADE TO THE COUNTY'S FLOODPLAIN MANAGEMENT REPOSITORY, DEPARTMENT OF PUBLIC WORKS, CITY OF JACKSONVILLE.



- ### LEGEND
- ESMT. .... EASEMENT
  - O.R. VOL. .... OFFICIAL RECORDS VOLUME
  - P.G. .... PAGE
  - (O.A.) .... OVERALL
  - P.C. .... POINT OF CURVATURE
  - P.T. .... POINT OF TANGENCY
  - P.R.C. .... POINT OF REVERSE CURVE
  - R.P. .... RADIUS POINT
  - P.I. .... POINT OF INTERSECTION
  - P.C.C. .... POINT OF COMPOUND CURVE
  - R. .... RADIUS
  - L. .... ARC LENGTH
  - CH. .... CHORD DISTANCE
  - C4. .... TABULATED CURVE DATA
  - V.N.B. .... VEGETATED NATURAL BUFFER
  - R/W. .... RIGHT OF WAY
  - ⊙ ..... FOUND PERMANENT REFERENCE MONUMENT (AS NOTED)
  - ⊞ ..... DENOTES PERMANENT REFERENCE MONUMENT SET L.B. NO. 6661
  - ..... DENOTES PERMANENT CONTROL POINT SET L.B. NO. 6661
  - +— ..... STREET NAME CHANGE
  - ▨ ..... DENOTES VEGETATED NATURAL BUFFER

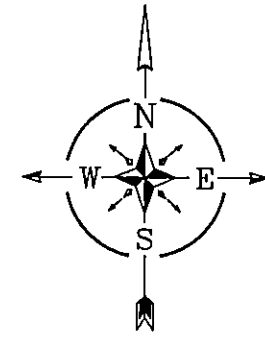
A & J LAND SURVEYORS, INC.  
Professional Land Surveyors  
1450 Balford Parkway, Suite 1600  
Jacksonville, Florida 32256  
Fax (904) 246-1644  
Phone (904) 246-1666 L.B. No. 6661

# Eagles Hammock - Unit One

A Portion of Government Lots 1 and 2, lying in Section 23, Township 1 North, Range 27 East, City of Jacksonville, Duval County, Florida.

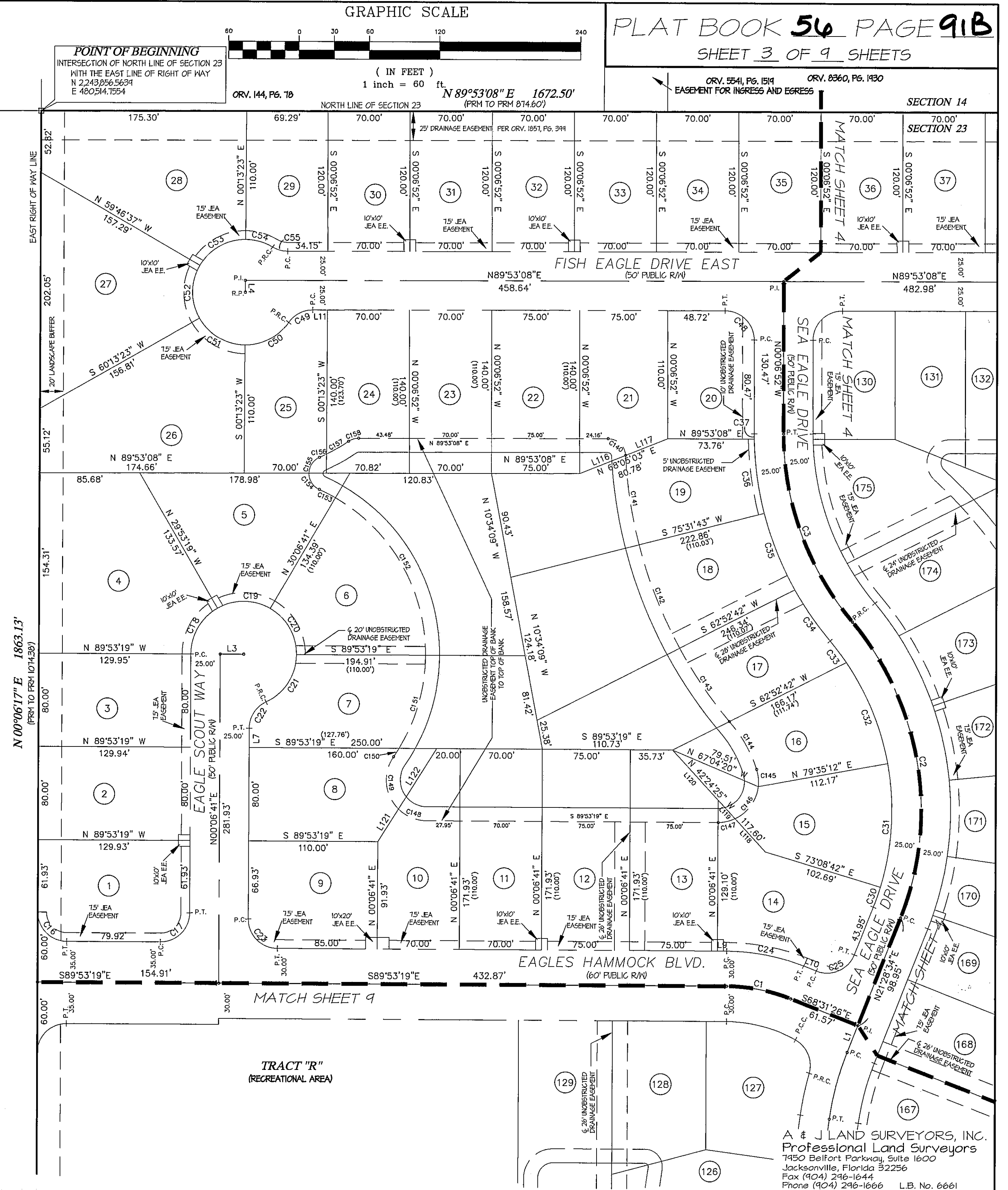
CURVE TABLE					
CURVE	LENGTH	RADIUS	CHORD	BEARING	DELTA
C1	55.93	150.00	55.61	N 79°12'22" W	21°21'53"
C2	269.30	250.00	256.47	N 09°23'01" W	61°43'11"
C3	175.10	250.00	171.54	S 20°10'44" E	40°07'44"
C16	39.27	25.00	35.35	S 44°53'31" E	89°59'36"
C17	39.27	25.00	35.36	N 45°06'41" E	90°00'00"
C18	47.12	45.00	45.00	S 30°06'41" W	60°00'00"
C19	47.12	45.00	45.00	N 89°53'19" W	60°00'00"
C20	47.12	45.00	45.00	N 29°53'19" W	60°00'00"
C21	50.75	45.00	48.11	N 32°25'23" E	64°37'23"
C22	28.20	25.00	26.73	S 32°25'23" W	64°37'23"
C23	39.27	25.00	35.36	S 44°53'19" E	90°00'00"
C24	67.12	180.00	66.73	N 79°12'22" E	21°21'53"
C25	39.27	25.00	35.36	N 66°28'34" E	90°00'00"
C30	18.15	225.00	18.14	N 19°09'56" E	04°37'16"
C31	107.08	225.00	106.08	N 03°13'15" E	27°16'06"
C32	94.20	225.00	93.51	N 22°24'26" W	23°59'16"
C33	22.94	225.00	22.93	N 37°19'20" W	05°50'32"
C34	52.98	275.00	52.90	S 34°43'28" E	11°02'16"
C35	70.72	275.00	70.52	S 21°50'19" E	14°44'03"
C36	64.38	275.00	64.24	S 07°45'52" E	13°24'51"
C37	4.53	275.00	4.53	S 00°35'09" E	00°56'34"
C48	39.27	25.00	35.36	N 45°06'52" W	90°00'00"
C49	24.06	25.00	23.15	S 62°18'38" W	55°09'00"
C50	43.58	45.00	41.90	N 62°28'45" E	55°29'14"
C51	47.12	45.00	45.00	S 59°46'37" E	60°00'00"
C52	47.12	45.00	45.00	S 00°13'23" W	60°00'00"
C53	47.12	45.00	45.00	S 60°13'23" W	60°00'00"
C54	24.08	45.00	23.80	N 74°26'40" W	30°39'56"
C55	13.53	25.00	13.36	S 74°36'47" E	31°00'10"
C140	22.83	15.00	20.69	N 46°31'01" W	87°11'42"
C141	77.68	385.00	77.55	S 08°41'59" E	11°33'39"
C142	95.01	385.00	94.77	S 21°32'59" E	14°08'21"
C143	75.71	385.00	75.58	S 34°15'10" E	11°16'00"
C144	47.66	115.00	47.32	N 29°36'10" W	23°44'46"
C145	14.81	35.00	14.70	N 05°36'37" W	24°14'19"
C146	35.42	35.00	33.93	N 35°30'15" E	57°59'26"
C147	14.88	35.00	14.77	N 76°40'40" E	24°21'25"
C148	27.15	35.00	26.47	S 67°40'11" E	44°26'15"
C149	48.75	35.00	44.91	S 05°32'43" E	79°48'42"
C150	8.59	155.00	8.59	N 32°46'21" E	03°10'34"
C151	84.06	155.00	83.03	N 15°38'52" E	31°04'23"
C152	162.32	155.00	155.00	N 29°53'19" W	60°00'00"
C153	15.56	155.00	15.55	N 62°45'49" W	05°45'01"
C154	17.43	15.00	16.46	S 32°21'12" E	66°34'17"
C155	17.00	15.00	16.10	S 33°23'50" W	64°55'46"
C156	6.73	155.00	6.73	N 64°37'08" E	02°29'10"
C157	21.78	155.00	21.76	N 59°21'02" E	08°03'01"
C158	9.05	15.00	8.91	S 72°36'20" W	34°33'37"

LINE TABLE		
LINE	LENGTH	BEARING
L1	24.88	S21°28'34"W
L3	20.00	N89°53'19"W
L4	10.00	N00°06'52"W
L7	16.75	N00°06'41"E
L9	7.87	N89°53'19"W
L10	11.57	S68°31'26"E
L11	12.47	N89°53'08"E
L116	42.16	S68°05'03"W
L117	38.62	S68°05'03"W
L118	38.24	N42°24'25"W
L119	21.25	N42°24'25"W
L120	58.11	N42°24'25"W
L121	33.11	N32°07'01"E
L122	61.23	N32°07'01"E



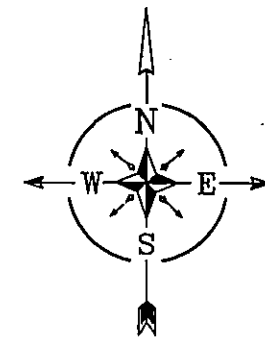
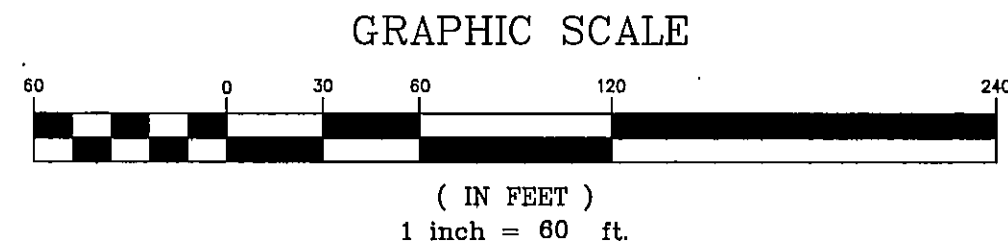
SECTION 14  
SECTION 23

YELLOW BLUFF ROAD  
(60' RIGHT OF WAY)



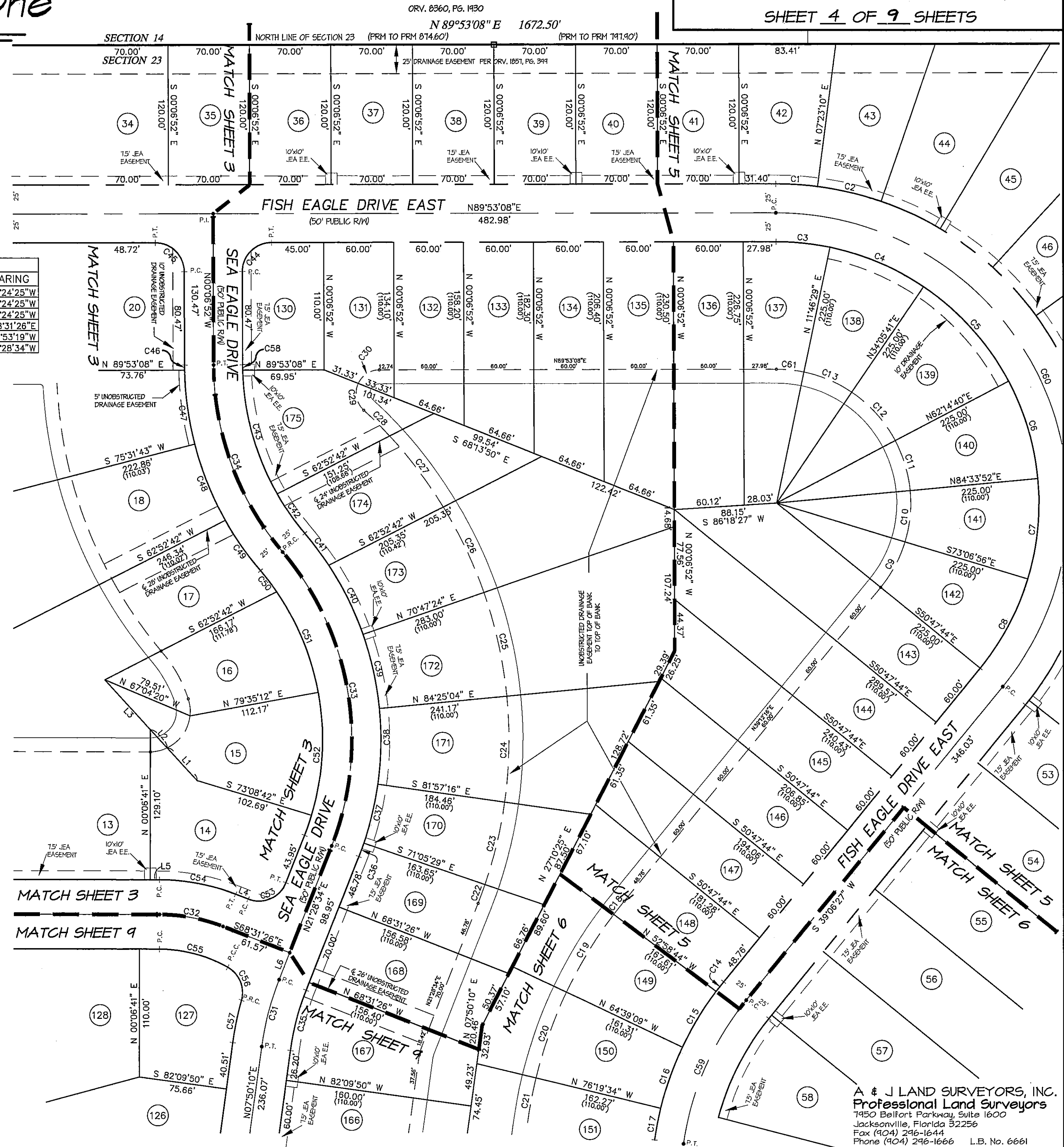
# Eagles Hammock - Unit One

A Portion of Government Lots 1 and 2, lying in Section 23, Township 1 North, Range 27 East, City of Jacksonville, Duval County, Florida.



CURVE TABLE				
CURVE	LENGTH	RADIUS	CHORD	DELTA
C1	36.00	275.00	35.97	N 86°21'51" W 07°30'01"
C2	56.03	275.00	55.93	N 76°46'38" W 11°40'25"
C3	46.69	225.00	46.60	N 84°10'11" W 11°53'20"
C4	87.65	225.00	87.10	N 67°03'55" W 22°19'12"
C5	110.54	225.00	109.44	N 41°49'50" W 28°08'59"
C6	87.65	225.00	87.10	N 16°35'44" W 22°19'12"
C7	87.65	225.00	87.10	N 05°43'28" E 22°19'12"
C8	55.62	275.00	55.53	N 33°24'36" E 11°35'19"
C8	87.65	225.00	87.10	N 28°02'40" E 22°19'12"
C9	44.80	115.00	44.52	N 28°02'40" E 22°19'12"
C10	44.80	115.00	44.52	N 05°43'28" E 22°19'12"
C11	44.80	115.00	44.52	N 16°35'44" W 22°19'12"
C12	56.50	115.00	55.93	N 41°49'50" W 28°08'59"
C13	44.80	115.00	44.52	N 67°03'55" W 22°19'12"
C14	10.48	275.00	10.48	S 38°06'46" W 02°11'00"
C15	56.03	275.00	55.93	S 31°11'04" W 11°40'25"
C16	56.03	275.00	55.93	S 19°30'39" W 11°40'25"
C17	28.02	275.00	28.01	S 10°45'18" W 05°50'16"
C18	14.67	385.00	14.67	S 38°06'46" W 02°11'00"
C19	78.44	385.00	78.31	S 31°11'04" W 11°40'25"
C20	78.44	385.00	78.31	S 19°30'39" W 11°40'25"
C21	39.23	385.00	39.21	S 10°45'18" W 05°50'16"
C22	17.25	385.00	17.25	N 20°11'33" E 02°34'03"
C23	72.99	385.00	72.89	N 13°28'38" E 10°51'47"
C24	91.57	385.00	91.36	N 01°13'54" E 13°37'40"
C25	91.57	385.00	91.36	N 12°23'46" W 13°37'40"
C26	81.70	385.00	81.55	N 25°17'21" W 12°09'30"
C27	76.26	385.00	76.14	N 37°02'35" W 11°20'58"
C28	31.68	385.00	31.67	N 45°04'32" W 04°42'54"
C29	25.10	20.00	23.49	S 11°28'46" E 71°54'27"
C30	22.83	20.00	21.61	S 57°10'48" W 65°24'41"
C31	59.52	250.00	59.38	S 14°39'22" W 13°38'25"
C32	55.93	150.00	55.61	N 79°12'22" W 21°21'53"
C33	269.30	250.00	256.47	N 09°23'01" W 61°43'11"
C34	175.10	250.00	171.54	S 20°10'44" E 40°07'44"
C35	53.57	225.00	53.44	S 14°39'22" W 13°38'25"
C36	12.32	275.00	12.32	N 20°11'33" E 02°34'03"
C37	52.14	275.00	52.06	N 13°28'38" E 10°51'47"
C38	65.41	275.00	65.25	N 01°13'54" E 13°37'40"
C39	65.41	275.00	65.25	N 12°23'46" W 13°37'40"
C40	66.53	275.00	66.37	N 26°08'28" W 13°51'45"
C41	34.42	275.00	34.40	N 36°39'28" W 07°10'16"
C42	41.53	225.00	41.47	S 34°57'22" E 10°34'28"
C43	111.54	225.00	110.40	S 15°28'04" E 28°24'08"
C44	39.27	25.00	35.36	S 44°53'08" W 90°00'00"
C45	39.27	25.00	35.36	S 00°35'09" E 00°56'34"
C46	4.53	275.00	4.53	S 07°45'52" E 13°24'51"
C47	64.38	275.00	64.24	S 21°50'19" E 14°44'03"
C48	70.72	275.00	70.52	S 34°43'28" E 11°02'16"
C49	52.98	275.00	52.90	N 37°19'20" W 05°50'32"
C50	22.94	225.00	22.93	N 22°24'26" W 23°59'16"
C51	94.20	225.00	93.51	N 03°13'15" E 27°16'06"
C52	107.08	225.00	106.08	N 66°28'34" E 90°00'00"
C53	39.27	25.00	35.36	N 79°12'22" W 21°21'53"
C54	67.12	180.00	66.73	N 75°13'07" W 29°20'23"
C55	61.45	120.00	60.78	N 22°30'18" W 76°05'14"
C56	33.20	275.00	30.81	S 11°41'14" W 07°42'09"
C57	36.97	275.00	36.94	S 00°41'26" E 01°09'09"
C58	4.53	225.00	4.53	S 23°31'13" W 31°22'06"
C59	136.87	250.00	135.17	N 25°27'18" W 129°19'07"
C60	564.26	250.00	451.89	N 84°10'11" W 11°53'20"
C61	23.86	115.00	23.82	

LINE TABLE	
LINE	BEARING
L1	38.24 N42°24'25"W
L2	21.25 N42°24'25"W
L3	58.11 N42°24'25"W
L4	11.57 S68°31'26"E
L5	7.87 N89°53'19"W
L6	24.88 S21°28'34"W

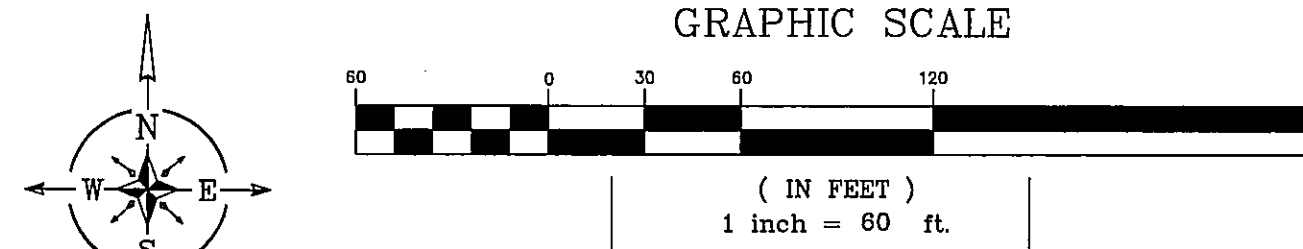


A & J LAND SURVEYORS, INC.  
Professional Land Surveyors  
7450 Belfort Parkway, Suite 1600  
Jacksonville, Florida 32256  
Fax (904) 246-1644  
Phone (904) 246-1666 L.B. No. 6661

# Eagles Hammock - Unit One

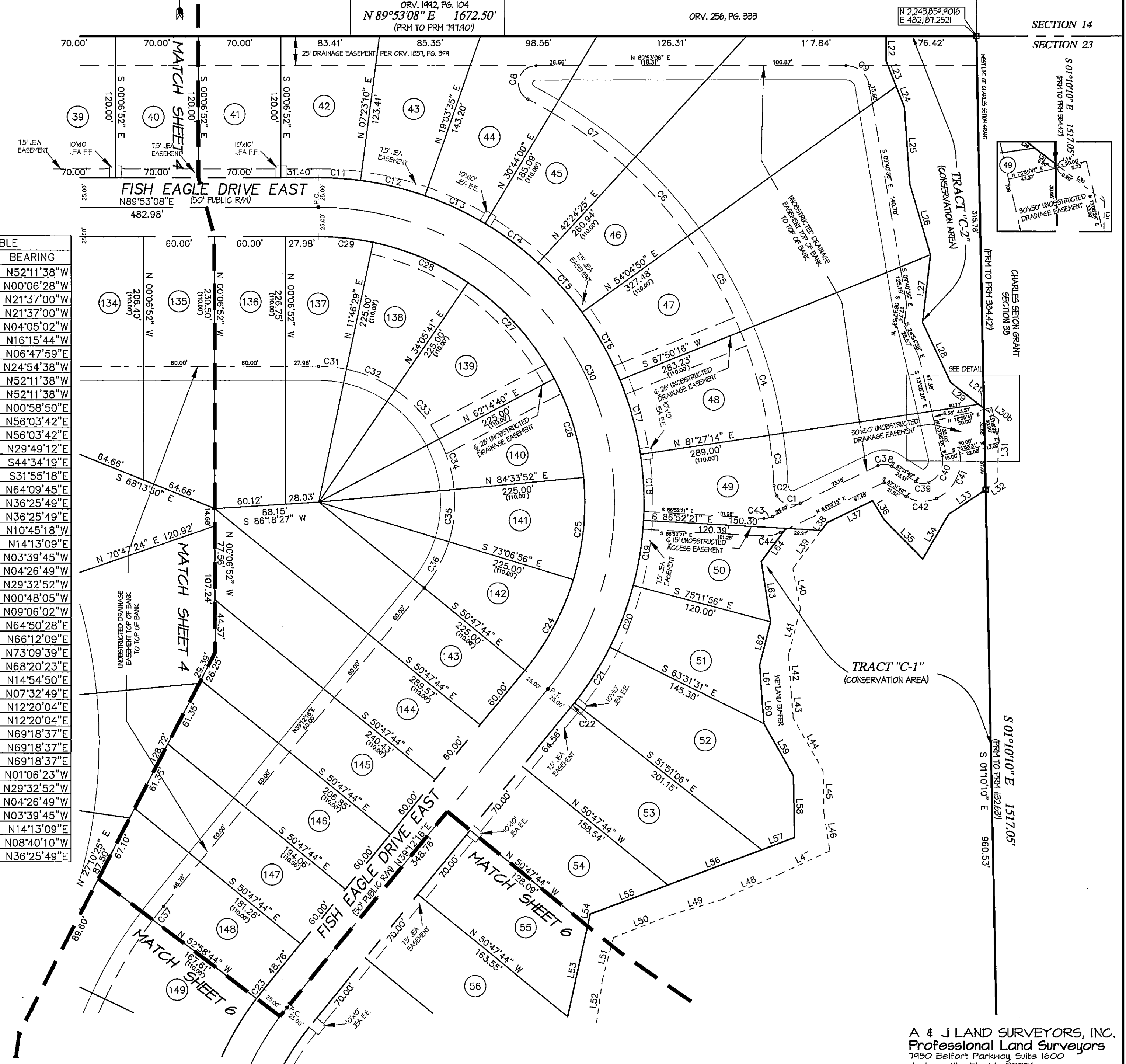
A Portion of Government Lots 1 and 2, lying in Section 23, Township 1 North, Range 27 East, City of Jacksonville, Duval County, Florida.

PLAT BOOK 56 PAGE 91D  
SHEET 5 OF 9 SHEETS



CURVE TABLE					
CURVE	LENGTH	RADIUS	CHORD	BEARING	DELTA
C1	22.74	15.00	20.62	S 72°31'14" E	86°51'02"
C2	9.38	20.00	9.29	S 15°39'41" E	26°52'04"
C3	42.46	385.00	42.44	N 05°23'13" W	06°19'07"
C4	91.49	385.00	91.28	N 15°21'15" W	13°36'58"
C5	92.44	385.00	92.22	N 29°02'27" W	13°45'26"
C6	78.44	385.00	78.31	N 41°45'23" W	11°40'25"
C7	78.44	385.00	78.31	N 53°25'48" W	11°40'25"
C8	39.94	15.00	29.14	S 13°36'19" W	152°33'39"
C9	28.08	20.00	25.83	N 49°53'44" W	80°26'16"
C11	36.00	275.00	35.97	N 86°21'51" W	07°30'01"
C12	56.03	275.00	55.93	N 76°46'38" W	11°40'25"
C13	56.03	275.00	55.93	N 65°06'13" W	11°40'25"
C14	56.03	275.00	55.93	N 53°25'48" W	11°40'25"
C15	56.03	275.00	55.93	N 41°45'23" W	11°40'25"
C16	66.03	275.00	65.87	N 29°02'27" W	13°45'26"
C17	65.35	275.00	65.20	N 15°21'15" W	13°36'58"
C18	56.03	275.00	55.93	N 02°42'34" W	11°40'25"
C19	56.03	275.00	55.93	N 08°57'51" E	11°40'25"
C20	56.03	275.00	55.93	N 20°38'16" E	11°40'25"
C21	56.03	275.00	55.93	N 32°18'41" E	11°40'25"
C22	5.07	275.00	5.07	N 38°40'35" E	01°03'22"
C23	10.48	275.00	10.48	S 38°06'46" W	02°11'00"
C24	87.65	225.00	87.10	N 28°02'40" E	22°19'12"
C25	87.65	225.00	87.10	N 05°43'28" E	22°19'12"
C26	87.65	225.00	87.10	N 16°35'44" W	22°19'12"
C27	110.54	225.00	109.44	N 41°49'50" W	28°08'59"
C28	87.65	225.00	87.10	N 67°03'55" W	22°19'12"
C29	46.69	225.00	46.60	N 84°10'11" W	11°53'20"
C30	564.26	250.00	451.89	N 25°27'18" W	129°19'07"
C31	23.86	115.00	23.82	N 84°10'11" W	11°53'20"
C32	44.80	115.00	44.52	N 67°03'55" W	22°19'12"
C33	56.50	115.00	55.93	N 41°49'50" W	28°08'59"
C34	44.80	115.00	44.52	N 16°35'44" W	22°19'12"
C35	44.80	115.00	44.52	N 05°43'28" E	22°19'12"
C36	44.80	115.00	44.52	N 28°02'40" E	22°19'12"
C37	14.67	385.00	14.67	S 38°06'46" W	02°11'00"
C38	12.24	12.00	11.71	N 86°44'12" W	58°25'05"
C39	12.02	12.00	11.52	S 86°13'33" E	57°23'47"
C40	27.30	20.00	25.23	N 25°58'03" E	78°13'02"
C41	47.78	35.00	44.16	N 25°58'03" E	78°13'02"
C42	27.05	27.00	25.93	S 86°13'33" E	57°23'47"
C43	7.61	15.00	7.53	N 78°35'27" E	29°04'24"
C44	15.22	30.00	15.06	N 78°35'27" E	29°04'24"

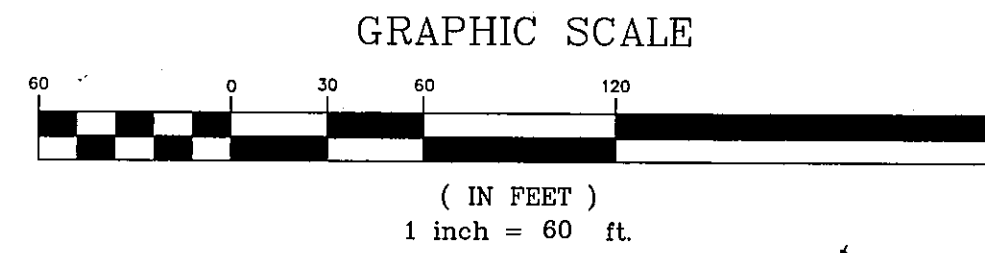
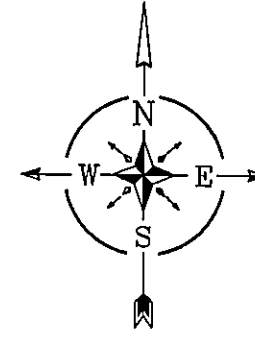
LINE TABLE	
LINE	BEARING
L21	5.58 N52°11'38"W
L22	20.82 N00°06'28"W
L23	23.34 N21°37'00"W
L24	18.86 N21°37'00"W
L25	65.68 N04°05'02"W
L26	62.31 N16°15'44"W
L27	57.66 N06°47'59"E
L28	56.18 N24°54'38"W
L29	30.28 N52°11'38"W
L30b	15.74 N52°11'38"W
L31	52.16 N00°58'50"E
L32	12.22 N56°03'42"E
L33	37.79 N56°03'42"E
L34	43.71 N29°49'12"E
L35	46.02 S44°34'19"E
L36	19.46 S31°55'18"E
L37	42.49 N64°09'45"E
L38	8.36 N36°25'49"E
L39	40.40 N36°25'49"E
L40	34.47 N10°45'18"W
L41	40.20 N14°13'09"E
L42	31.85 N03°39'45"W
L43	22.40 N04°26'49"W
L44	51.29 N29°32'52"W
L45	34.74 N00°48'05"W
L46	33.24 N09°06'02"W
L47	46.07 N64°50'28"E
L48	54.86 N66°12'09"E
L49	42.76 N73°09'39"E
L50	53.57 N68°20'23"E
L51	37.24 N14°54'50"E
L52	36.08 N07°32'49"E
L53	78.47 N12°20'04"E
L54	10.45 N12°20'04"E
L55	70.14 N69°18'37"E
L56	84.77 N69°18'37"E
L57	29.65 N69°18'37"E
L58	52.36 N01°06'23"W
L59	50.45 N29°32'52"W
L60	25.38 N04°26'49"W
L61	25.08 N03°39'45"W
L62	37.31 N14°13'09"E
L63	51.85 N08°40'10"W
L64	34.90 N36°25'49"E



A & J LAND SURVEYORS, INC.  
Professional Land Surveyors  
7450 Belfort Parkway, Suite 1600  
Jacksonville, Florida 32256  
Fax (904) 246-1644  
Phone (904) 246-1666 L.B. No. 6661

# Eagles Hammock - Unit One

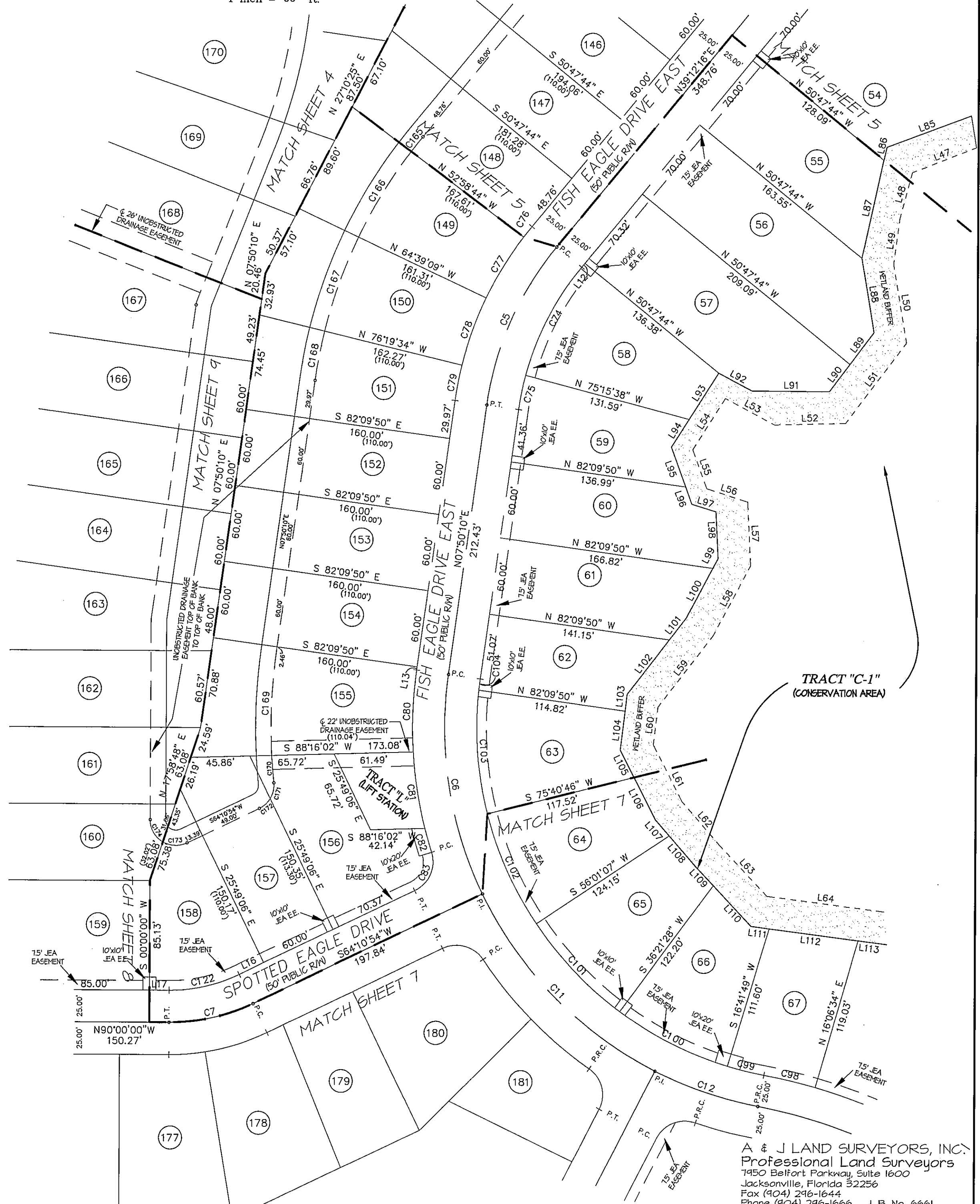
A Portion of Government Lots 1 and 2, lying in Section 23, Township 1 North, Range 27 East, City of Jacksonville, Duval County, Florida.



PLAT BOOK **36** PAGE **91E**  
SHEET **6** OF **9**

CURVE TABLE					
CURVE	LENGTH	RADIUS	CHORD	BEARING	DELTA
C5	136.87	250.00	135.17	S 23°31'13" W	31°22'06"
C6	176.21	300.00	173.69	S 08°59'28" E	33°39'15"
C7	67.59	150.00	67.02	N 77°05'27" E	25°49'06"
C11	195.56	300.00	192.12	S 44°29'34" E	37°20'57"
C12	85.04	300.00	84.75	S 71°17'17" E	16°14'28"
C74	96.07	225.00	95.35	S 26°58'19" W	24°27'54"
C75	27.11	225.00	27.09	S 11°17'16" W	06°54'12"
C76	10.48	275.00	10.48	S 38°06'46" W	02°11'00"
C77	56.03	275.00	55.93	S 31°11'04" W	11°40'25"
C78	56.03	275.00	55.93	S 19°30'39" W	11°40'25"
C79	28.02	275.00	28.01	S 10°45'18" W	05°50'16"
C80	64.28	325.00	64.17	S 02°10'12" W	11°19'55"
C81	60.55	325.00	60.46	S 08°50'01" E	10°40'30"
C82	19.48	325.00	19.48	S 15°53'17" E	03°26'03"
C83	35.69	25.00	32.73	N 23°17'18" E	81°47'12"
C98	40.93	425.00	40.92	N 76°38'58" W	05°31'05"
C99	29.30	275.00	29.29	S 76°21'21" E	06°06'19"
C100	94.37	275.00	93.90	S 63°28'22" E	19°39'39"
C101	94.37	275.00	93.90	S 43°48'43" E	19°39'39"
C102	94.37	275.00	93.90	S 24°09'04" E	19°39'39"
C103	97.42	275.00	96.91	S 04°10'21" E	20°17'47"
C104	8.93	275.00	8.93	S 06°54'21" W	01°51'37"
C122	56.33	125.00	55.85	N 77°05'27" E	25°49'06"
C165	14.67	385.00	14.67	S 38°06'46" W	02°11'00"
C166	78.44	385.00	78.31	S 31°11'04" W	11°40'25"
C167	78.44	385.00	78.31	S 19°30'39" W	11°40'25"
C168	39.23	385.00	39.21	S 10°45'18" W	05°50'16"
C169	82.65	435.00	82.53	S 02°23'35" W	10°53'10"
C170	21.65	435.00	21.64	S 04°28'32" E	02°51'04"
C171	12.81	20.00	12.59	N 12°27'01" E	36°42'10"
C172	11.65	20.00	11.49	N 47°29'30" E	33°22'48"
C173	19.62	20.00	18.84	S 87°43'05" E	56°12'02"
C174	20.81	20.00	19.88	S 29°48'32" E	59°37'04"

LINE TABLE	
LINE	BEARING
L12	N39°12'16"E
L13	N07°50'10"E
L16	S64°10'54"W
L17	N90°00'00"E
L47	N68°20'23"E
L48	N14°54'50"E
L49	N07°32'49"E
L50	N09°26'05"W
L51	N36°50'07"E
L52	N88°24'00"E
L53	S62°02'01"E
L54	N32°15'00"E
L55	N19°55'13"W
L56	N72°18'48"W
L57	N02°48'38"W
L58	N27°56'20"E
L59	N37°17'34"E
L60	N06°52'28"E
L61	N26°51'12"W
L62	N40°48'53"W
L63	N42°58'54"W
L64	N82°40'43"W
L85	N69°18'37"E
L86	N12°20'04"E
L87	N12°20'04"E
L88	N09°26'05"W
L89	N36°50'07"E
L90	N36°50'07"E
L91	S89°56'45"E
L92	S62°02'01"E
L93	N32°15'00"E
L94	N32°15'00"E
L95	N19°55'13"W
L96	N19°55'13"W
L97	N72°18'48"W
L98	N02°48'38"W
L99	N27°56'20"E
L100	N37°17'34"E
L101	N37°17'34"E
L102	N06°52'28"E
L103	N06°52'28"E
L104	N26°51'12"W
L105	N26°51'12"W
L106	N40°48'53"W
L107	N40°48'53"W
L108	N42°58'54"W
L109	N42°58'54"W
L110	N42°58'54"W
L111	N82°40'43"W
L112	N82°40'43"W
L113	N82°40'43"W

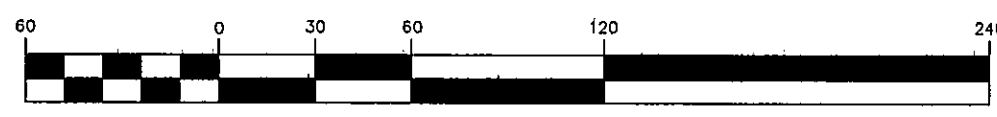


A & J LAND SURVEYORS, INC.  
Professional Land Surveyors  
7450 Belfort Parkway, Suite 1600  
Jacksonville, Florida 32256  
Fax (904) 246-1644  
Phone (904) 246-1666 L.B. No. 6661

# Eagles Hammock - Unit One

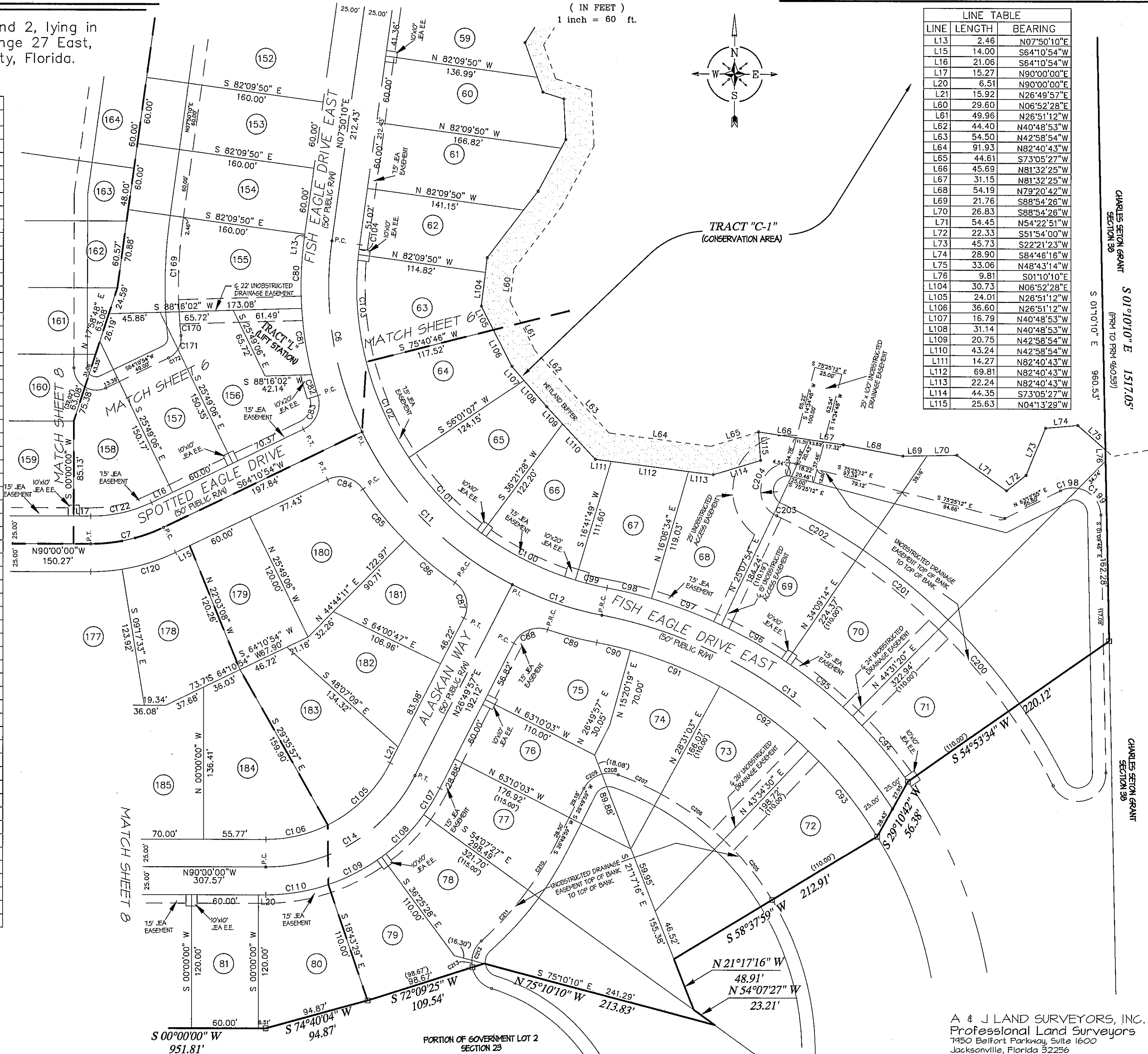
A Portion of Government Lots 1 and 2, lying in Section 23, Township 1 North, Range 27 East, City of Jacksonville, Duval County, Florida.

GRAPHIC SCALE



PLAT BOOK 56 PAGE 91F  
SHEET 7 OF 9 SHEETS

CURVE TABLE					
CURVE	LENGTH	RADIUS	CHORD	BEARING	DELTA
C6	176.21	300.00	173.69	S 08°59'28" E	33°39'15"
C7	67.59	150.00	67.02	N 77°05'27" E	25°49'06"
C11	195.56	300.00	192.12	S 44°29'34" E	37°20'57"
C12	85.04	300.00	84.75	S 71°17'17" E	16°14'28"
C13	321.41	400.00	312.83	N 56°23'21" W	46°02'19"
C14	165.37	150.00	157.12	N 58°24'59" E	63°10'03"
C80	64.27	325.00	64.17	S 02°10'13" W	11°19'52"
C81	60.56	325.00	60.47	S 08°49'59" E	10°40'33"
C82	19.48	325.00	19.48	S 15°53'17" E	03°26'03"
C83	35.69	25.00	32.73	N 23°17'18" E	81°47'12"
C84	35.69	25.00	32.73	N 74°55'30" W	81°47'12"
C85	59.34	325.00	59.26	S 39°15'44" E	10°27'41"
C86	59.34	325.00	59.26	S 49°43'25" E	10°27'41"
C87	35.69	25.00	32.73	N 14°03'39" W	81°47'12"
C88	35.69	25.00	32.73	S 67°43'33" W	81°47'12"
C89	45.54	325.00	45.50	S 75°23'40" E	08°01'40"
C90	31.07	375.00	31.06	N 77°02'06" W	04°44'50"
C91	86.26	375.00	86.07	N 68°04'19" W	13°10'44"
C92	98.55	375.00	98.27	N 53°57'13" W	15°03'27"
C93	98.55	375.00	98.27	N 38°53'45" W	15°03'29"
C94	76.92	425.00	76.82	N 40°17'33" W	10°22'13"
C95	76.91	425.00	76.80	N 50°39'43" W	10°22'06"
C96	66.92	425.00	66.85	N 60°21'26" W	09°01'20"
C97	66.92	425.00	66.85	N 69°22'46" W	09°01'20"
C98	40.93	425.00	40.92	N 76°38'58" W	05°31'05"
C99	29.30	275.00	29.29	S 76°21'21" E	06°06'19"
C100	94.37	275.00	93.90	S 63°28'22" E	19°39'39"
C101	94.37	275.00	93.90	S 43°48'43" E	19°39'39"
C102	94.37	275.00	93.90	S 24°09'04" E	19°39'39"
C103	97.42	275.00	96.91	S 04°10'21" E	20°17'47"
C104	8.93	275.00	8.93	S 06°54'21" W	01°51'37"
C105	80.14	125.00	78.78	N 45°11'59" E	36°44'03"
C106	57.67	125.00	57.16	N 76°47'00" E	26°26'00"
C107	27.62	175.00	27.59	N 31°21'15" E	09°02'36"
C108	54.06	175.00	53.85	N 44°43'32" E	17°41'59"
C109	54.06	175.00	53.85	N 62°25'31" E	17°41'59"
C110	57.19	175.00	56.94	N 80°38'15" E	18°43'29"
C120	50.47	175.00	50.30	N 72°26'41" E	16°31'33"
C122	56.33	125.00	55.85	N 77°05'27" E	25°49'06"
C169	82.65	435.00	82.53	S 02°23'35" W	10°53'10"
C170	21.65	435.00	21.64	S 04°28'32" E	02°51'04"
C171	12.81	20.00	12.59	N 12°27'01" E	36°42'10"
C172	11.65	20.00	11.49	N 47°29'30" E	33°22'48"
C198	16.53	25.00	16.23	S 82°09'31" W	37°53'11"
C199	33.92	25.00	31.38	N 40°01'50" W	77°44'07"
C200	96.83	535.00	96.70	N 40°17'33" W	10°22'13"
C201	96.81	535.00	96.68	N 50°39'43" W	10°22'06"
C202	81.27	535.00	81.19	N 60°11'52" W	08°42'12"
C203	2.98	25.00	2.98	S 61°07'44" E	06°50'27"
C204	131.87	50.00	96.84	S 22°56'49" W	151°06'51"
C204	70.81	25.00	49.40	S 23°26'09" W	162°17'19"
C205	69.65	265.00	69.44	N 38°53'45" W	15°03'29"
C206	69.64	265.00	69.44	N 53°57'13" W	15°03'27"
C207	41.87	265.00	41.82	N 66°00'31" W	09°03'08"
C208	14.86	25.00	14.64	N 87°33'40" W	34°03'09"
C209	21.20	25.00	20.57	S 51°07'21" W	48°34'48"
C210	46.58	290.00	46.53	N 31°16'29" E	09°12'08"
C211	62.40	290.00	62.28	N 42°02'25" E	12°19'44"
C212	19.68	25.00	19.18	S 25°38'52" W	45°06'49"
C213	6.22	25.00	6.20	S 04°02'13" E	14°15'22"

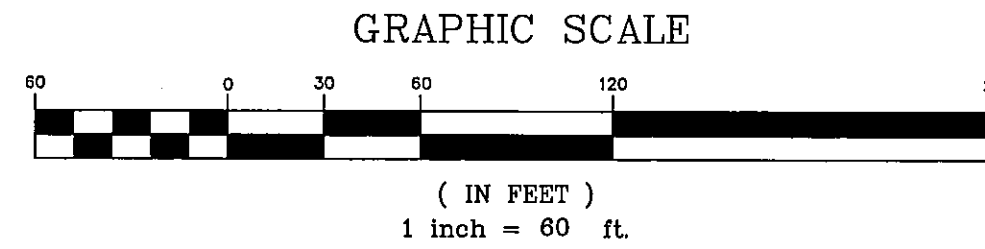
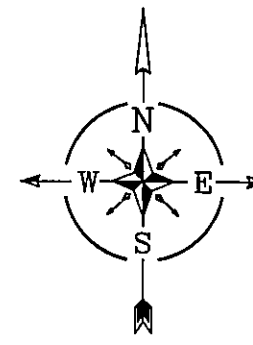


LINE TABLE		
LINE	LENGTH	BEARING
L13	2.46	N07°50'10"E
L15	14.00	S64°10'54"W
L16	21.06	S64°10'54"W
L17	15.27	N90°00'00"E
L20	6.51	N90°00'00"E
L21	15.92	N26°49'57"E
L60	29.60	N06°52'28"E
L61	49.96	N26°51'12"W
L62	44.40	N40°48'53"W
L63	54.50	N42°58'54"W
L64	91.93	N82°40'43"W
L65	44.61	S73°05'27"W
L66	45.69	N81°32'25"W
L67	31.15	N81°32'25"W
L68	54.19	N79°20'42"W
L69	21.76	S88°54'26"W
L70	26.83	S88°54'26"W
L71	54.45	N54°22'51"W
L72	22.33	S51°54'00"W
L73	45.73	S22°21'23"W
L74	28.90	S84°46'16"W
L75	33.06	N48°43'14"W
L76	9.81	S01°10'10"E
L104	30.73	N06°52'28"E
L105	24.01	N26°51'12"W
L106	36.60	N26°51'12"W
L107	16.79	N40°48'53"W
L108	31.14	N40°48'53"W
L109	20.75	N42°58'54"W
L110	43.24	N42°58'54"W
L111	14.27	N82°40'43"W
L112	69.81	N82°40'43"W
L113	22.24	N82°40'43"W
L114	44.35	S73°05'27"W
L115	25.63	N04°13'29"W

A & J LAND SURVEYORS, INC.  
Professional Land Surveyors  
1450 Belfort Parkway, Suite 1600  
Jacksonville, Florida 32256  
Phone (904) 246-1644  
Fax (904) 246-1666 L.B. No. 6661

# Eagles Hammock - Unit One

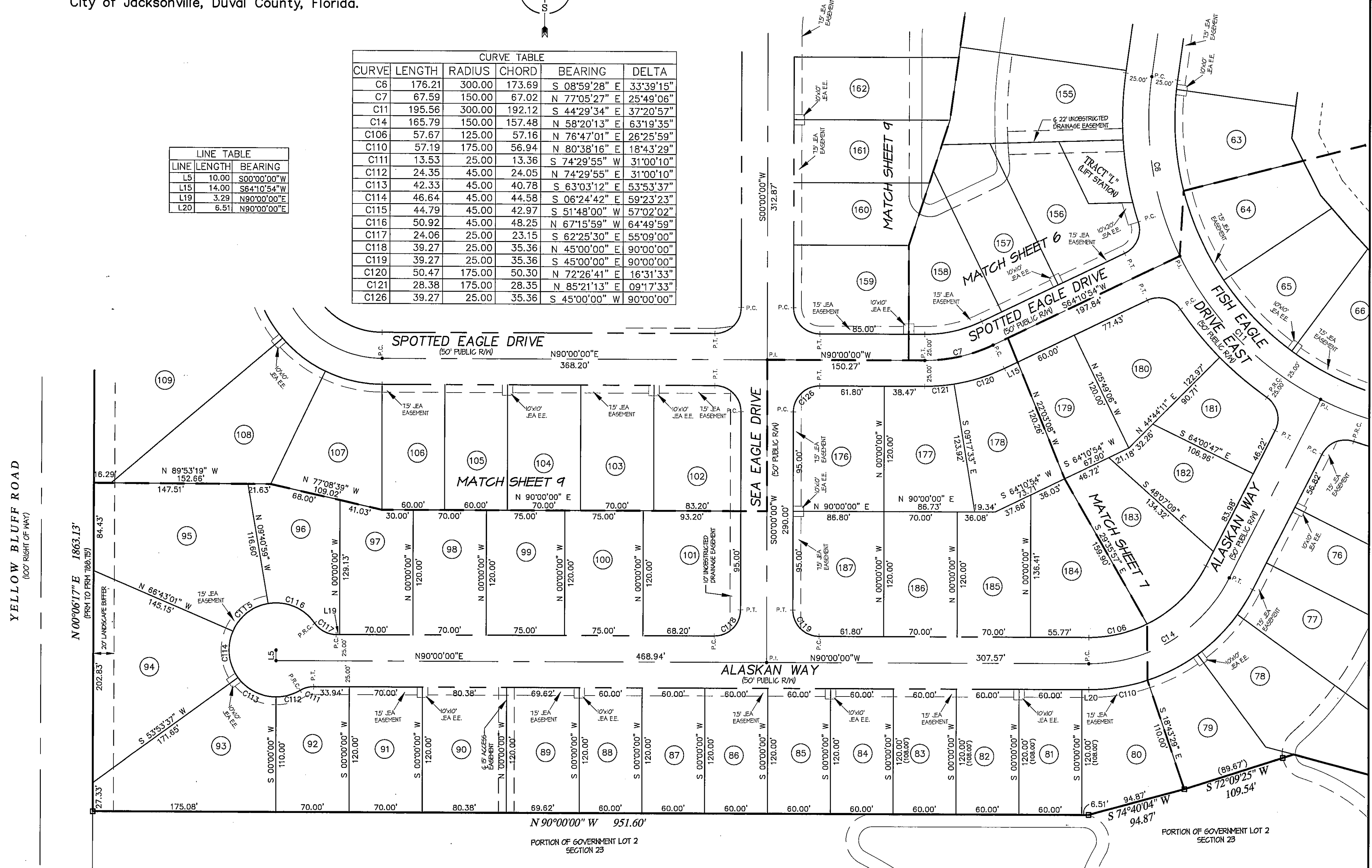
A Portion of Government Lots 1 and 2, lying in  
Section 23, Township 1 North, Range 27 East,  
City of Jacksonville, Duval County, Florida.



PLAT BOOK **56** PAGE **916**  
SHEET **8** OF **9** SHEETS

LINE TABLE		
LINE	LENGTH	BEARING
L5	10.00	S00°00'00"W
L15	14.00	S64°10'54"W
L19	3.29	N90°00'00"E
L20	6.51	N90°00'00"E

CURVE TABLE					
CURVE	LENGTH	RADIUS	CHORD	BEARING	DELTA
C6	176.21	300.00	173.69	S 08°59'28" E	33°39'15"
C7	67.59	150.00	67.02	N 77°05'27" E	25°49'06"
C11	195.56	300.00	192.12	S 44°29'34" E	37°20'57"
C14	165.79	150.00	157.48	N 58°20'13" E	63°19'35"
C106	57.67	125.00	57.16	N 76°47'01" E	26°25'59"
C110	57.19	175.00	56.94	N 80°38'16" E	18°43'29"
C111	13.53	25.00	13.36	S 74°29'55" W	31°00'10"
C112	24.35	45.00	24.05	N 74°29'55" E	31°00'10"
C113	42.33	45.00	40.78	S 63°03'12" E	53°53'37"
C114	46.64	45.00	44.58	S 06°24'42" E	59°23'23"
C115	44.79	45.00	42.97	S 51°48'00" W	57°02'02"
C116	50.92	45.00	48.25	N 67°15'59" W	64°49'59"
C117	24.06	25.00	23.15	S 62°25'30" E	55°09'00"
C118	39.27	25.00	35.36	N 45°00'00" E	90°00'00"
C119	39.27	25.00	35.36	S 45°00'00" E	90°00'00"
C120	50.47	175.00	50.30	N 72°26'41" E	16°31'33"
C121	28.38	175.00	28.35	N 85°21'13" E	09°17'33"
C126	39.27	25.00	35.36	S 45°00'00" W	90°00'00"



A & J LAND SURVEYORS, INC.  
Professional Land Surveyors  
7450 Belfort Parkway, Suite 1600  
Jacksonville, Florida 32256  
Fax (904) 296-1644  
Phone (904) 296-1666 L.B. No. 6661

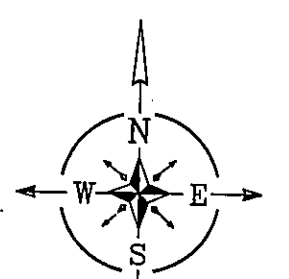
# Eagles Hammock - Unit One

A Portion of Government Lots 1 and 2, lying in Section 23, Township 1 North, Range 27 East, City of Jacksonville, Duval County, Florida.

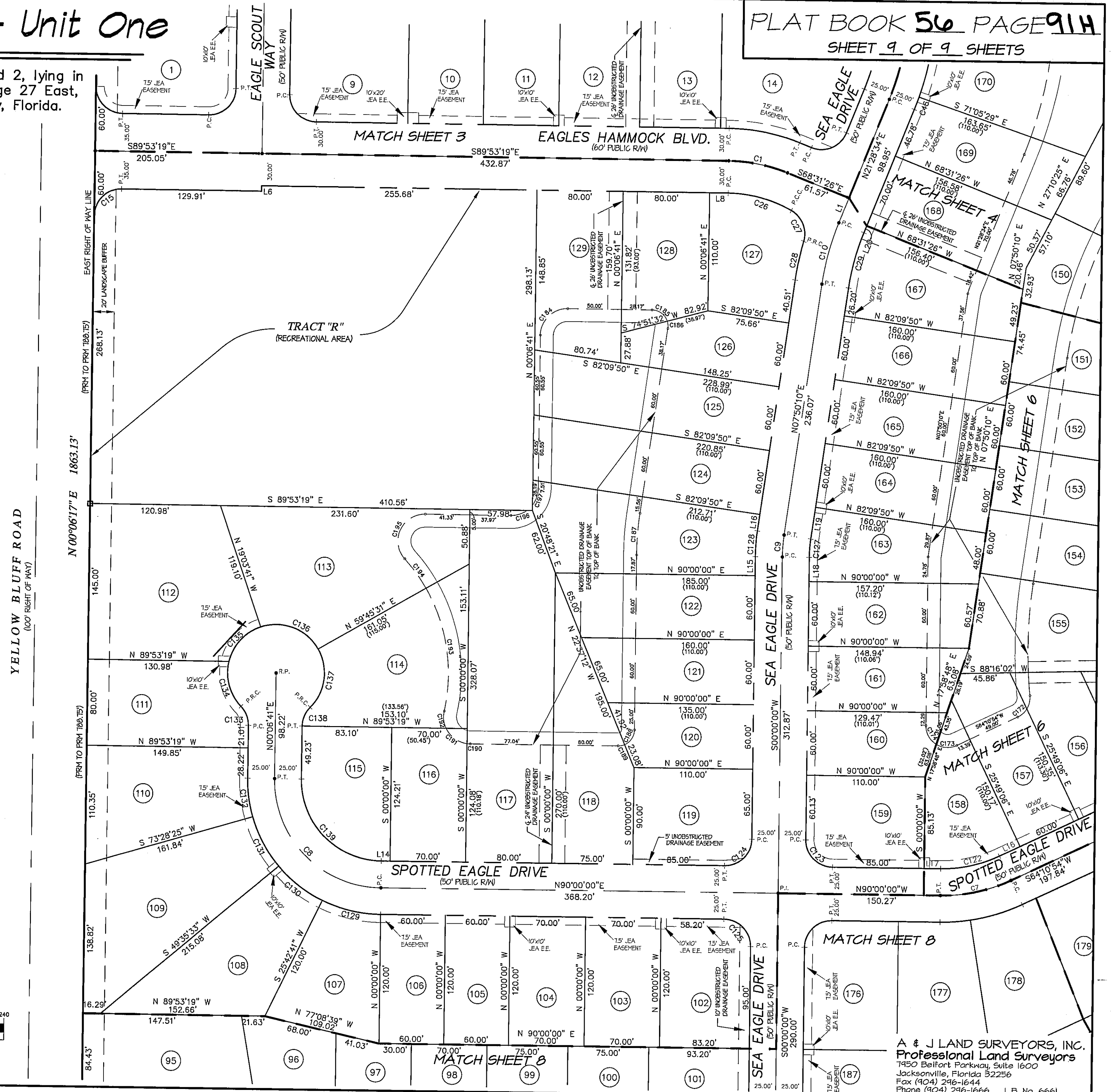
PLAT BOOK 56 PAGE 91H  
SHEET 9 OF 9 SHEETS

CURVE TABLE					
CURVE	LENGTH	RADIUS	CHORD	BEARING	DELTA
C1	55.93	150.00	55.61	N 79°12'22" W	21°21'53"
C8	157.27	100.00	141.56	S 44°56'39" E	90°06'41"
C9	20.51	150.00	20.50	S 03°55'05" W	07°50'10"
C10	59.52	250.00	59.38	S 14°39'22" W	13°38'25"
C15	39.27	25.00	35.36	S 45°06'29" W	90°00'24"
C26	61.45	120.00	60.78	N 75°13'07" W	29°20'23"
C27	33.20	25.00	30.81	N 22°30'18" W	76°05'14"
C28	36.97	275.00	36.94	S 11°41'14" W	07°42'09"
C29	53.57	225.00	53.44	S 14°39'22" W	13°38'25"
C46	12.32	275.00	12.32	N 20°11'33" E	02°34'03"
C123	39.27	25.00	35.36	S 45°00'00" E	90°00'00"
C124	39.27	25.00	35.36	N 45°00'00" E	90°00'00"
C125	39.27	25.00	35.36	N 45°00'00" W	90°00'00"
C127	17.10	125.00	17.08	S 03°55'05" W	07°50'10"
C128	23.93	175.00	23.92	S 03°55'05" W	07°50'10"
C129	56.09	125.00	55.62	S 77°08'39" E	25°42'41"
C130	52.10	125.00	51.72	S 52°20'53" E	23°52'52"
C131	52.10	125.00	51.72	S 28°28'01" E	23°52'52"
C132	36.30	125.00	36.17	S 08°12'27" E	16°38'16"
C133	19.38	25.00	18.90	N 22°05'46" W	44°24'55"
C134	44.97	45.00	43.12	S 15°40'35" E	57°15'17"
C135	45.54	45.00	43.62	S 41°56'41" W	57°59'15"
C136	61.91	45.00	57.14	N 69°39'05" W	78°49'12"
C137	58.72	45.00	54.64	N 07°08'34" E	74°46'06"
C138	19.38	25.00	18.90	S 22°19'09" W	44°24'55"
C139	117.96	75.00	106.17	S 44°56'39" E	90°06'41"
C172	11.65	20.00	11.49	N 47°29'30" E	33°22'48"
C173	19.62	20.00	18.84	S 87°43'05" E	56°12'02"
C174	20.81	20.00	19.88	S 29°48'32" E	59°37'04"
C184	39.27	25.00	35.36	S 45°06'41" W	90°00'00"
C185	18.73	15.00	17.54	N 54°06'52" W	71°32'54"
C186	6.85	15.00	6.79	N 05°15'08" W	26°10'35"
C187	38.98	285.00	38.95	S 03°55'05" W	07°50'10"
C188	17.61	15.00	16.62	N 33°38'23" E	67°16'47"
C189	5.95	15.00	5.91	N 78°38'23" E	22°43'13"
C190	2.97	25.00	2.97	S 86°35'57" E	06°48'06"
C191	25.04	25.00	24.01	S 54°30'12" E	57°23'25"
C192	16.49	25.00	16.19	S 06°54'43" E	37°47'33"
C193	117.92	160.00	115.27	N 09°07'43" W	42°13'33"
C194	33.94	160.00	33.88	N 36°19'06" W	12°09'13"
C195	57.82	25.00	45.77	S 23°51'30" W	132°30'24"
C196	16.09	25.00	15.81	N 71°40'36" E	36°52'12"
C197	16.09	25.00	15.81	N 18°32'47" E	36°52'12"

LINE TABLE		
LINE	LENGTH	BEARING
L1	24.88	S21°28'34"W
L6	5.00	S00°06'41"W
L8	17.18	N89°53'19"W
L14	8.20	N90°00'00"E
L15	17.87	S00°00'00"W
L16	15.56	N07°50'10"E
L18	22.73	S00°00'00"W
L19	29.87	N07°50'10"E
L20	7.05	N21°28'34"E



GRAPHIC SCALE  
( IN FEET )  
1 inch = 60 ft.



A & J LAND SURVEYORS, INC.  
Professional Land Surveyors  
7450 Belfort Parkway, Suite 1600  
Jacksonville, Florida 32256  
Fax (904) 246-1644  
Phone (904) 246-1666 L.B. No. 6661