

# EAST HAMPTON UNIT FOUR

BEING A PORTION OF SECTION 31, TOWNSHIP 3 SOUTH, RANGE 28 EAST, CITY OF JACKSONVILLE, DUVAL COUNTY, FLORIDA.

SHEET 1 OF 10  
NOTE: SEE SHEET 2 FOR GENERAL NOTES, LEGEND, AND DETAILS.

### CAPTION

A PORTION OF SECTION 31, TOWNSHIP 3 SOUTH, RANGE 28 EAST, DUVAL COUNTY, FLORIDA, BEING MORE PARTICULARLY DESCRIBED AS FOLLOWS:

FOR A POINT OF REFERENCE COMMENCE AT THE NORTHEASTERLY CORNER OF SAID SECTION 31 AND RUN THENCE SOUTH 00° 46' 11" EAST, ALONG THE EASTERLY LINE OF SAID SECTION 31, (ALSO BEING THE EASTERLY LINE OF A 150 FOOT WIDE JACKSONVILLE ELECTRIC AUTHORITY EASEMENT AS RECORDED IN THE OFFICIAL RECORDS OF SAID COUNTY IN VOLUME 1974, PAGE 590), A DISTANCE OF 2234.20 FEET TO THE POINT OF BEGINNING.

FROM THE POINT OF BEGINNING THUS DESCRIBED CONTINUE SOUTH 00° 46' 11" EAST, ALONG SAID EASTERLY OF SECTION 31 AND SAID EASTERLY LINE OF A 150 FOOT WIDE JEA EASEMENT, A DISTANCE OF 2454.52 FEET; THENCE SOUTH 89° 06' 26" WEST, TO AND ALONG THE NORTHERLY LINE OF LANDS DESCRIBED AND RECORDED IN THE OFFICIAL RECORDS OF SAID COUNTY IN VOLUME 6658, PAGES 1609 AND 1610, A DISTANCE OF 549.52 FEET; THENCE NORTH 00° 51' 52" WEST, A DISTANCE OF 627.42 FEET; THENCE SOUTH 79° 53' 59" WEST, A DISTANCE OF 942.14 FEET; THENCE SOUTH 72° 58' 09" WEST, A DISTANCE OF 619.46 FEET; THENCE SOUTH 67° 16' 19" WEST, A DISTANCE OF 58.38 FEET; THENCE SOUTH 83° 48' 29" WEST, A DISTANCE OF 372.62 FEET; THENCE NORTH 00° 54' 05" WEST, A DISTANCE OF 1132.59 FEET; THENCE NORTH 34° 18' 45" EAST, A DISTANCE OF 699.11 FEET TO A POINT AT THE SOUTHWEST CORNER OF EAST HAMPTON UNIT THREE, AS RECORDED IN PLAT BOOK 53, PAGES 49 THROUGH 49E OF THE CURRENT PUBLIC RECORDS OF SAID COUNTY; THENCE SOUTH 74° 49' 18" EAST, ALONG THE SOUTHERLY BOUNDARY LINE OF SAID EAST HAMPTON UNIT THREE, A DISTANCE OF 372.08 FEET; THENCE NORTH 49° 52' 22" EAST, ALONG THE SOUTHEASTERLY BOUNDARY LINE OF SAID EAST HAMPTON UNIT THREE, A DISTANCE OF 808.26 FEET, THENCE NORTH 06° 36' 43" EAST, ALONG THE EASTERLY BOUNDARY LINE OF SAID EAST HAMPTON UNIT THREE, A DISTANCE OF 97.32 FEET; THENCE NORTH 89° 13' 49" EAST, A DISTANCE OF 1,105.58 FEET TO THE POINT OF BEGINNING.

LAND THUS DESCRIBED CONTAINS 102.97 ACRES, MORE OR LESS.

### APPROVED FOR THE RECORD

THIS IS TO CERTIFY THAT THIS PLAT HAS BEEN EXAMINED, ACCEPTED AND APPROVED BY THE CITY OF JACKSONVILLE, DUVAL COUNTY, FLORIDA, PURSUANT TO CHAPTER 654, ORDINANCE CODE.

[Signature]  
DIRECTOR OF PUBLIC WORKS

January 31<sup>st</sup> 2001  
DATE

### CLERK'S CERTIFICATE 2001024025

THIS IS TO CERTIFY THAT THIS PLAT HAS BEEN EXAMINED AND APPROVED BY THE CITY OF JACKSONVILLE, DUVAL COUNTY, FLORIDA, AND SUBMITTED TO ME FOR RECORDING AND IS RECORDED IN PLAT BOOK 53, PAGES 96 thru 96H OF THE PUBLIC RECORDS OF DUVAL COUNTY, FLORIDA. THIS 31<sup>st</sup> DAY OF January A.D. 2001.

[Signature]  
JIM FULLER, CLERK OF THE CIRCUIT

[Signature]  
DEPUTY CLERK

### PLAT CONFORMITY REVIEW

THIS PLAT HAS BEEN REVIEWED AND FOUND IN COMPLIANCE WITH PART 1, CHAPTER 177, FLORIDA STATUTES, THIS 29<sup>rd</sup> DAY OF January 2001.

BY: [Signature]  
GLENN E. MCGREGOR, PROFESSIONAL LAND SURVEYOR No. 4252, STATE OF FLORIDA

### ADOPTION AND DEDICATION

THIS IS TO CERTIFY THAT PULTE HOME CORPORATION, A MICHIGAN CORPORATION, ("PULTE") AND E. H. LIMITED PARTNERSHIP, A FLORIDA LIMITED PARTNERSHIP, ARE THE LAWFUL OWNERS OF THE LANDS DESCRIBED IN THE CAPTION HEREON KNOWN AS EAST HAMPTON UNIT FOUR, HAVING CAUSED THE SAME TO BE SURVEYED AND SUBDIVIDED. THIS PLAT, BEING MADE IN ACCORDANCE WITH SAID SURVEY, IS HEREBY ADOPTED AS A TRUE AND CORRECT PLAT OF THOSE LANDS. ALL DRIVES, COURTS, CIRCLES AND UNOBSTRUCTED ACCESS AND DRAINAGE EASEMENTS, EXCEPT JEA EASEMENTS AS SHOWN HEREON, ARE HEREBY IRREVOCABLY AND WITHOUT RESERVATION DEDICATED TO THE CITY OF JACKSONVILLE, ITS SUCCESSORS AND ASSIGNS. THE DRAINAGE EASEMENTS OVER, UNDER, ACROSS AND THROUGH THE LAKES/STORMWATER MANAGEMENT FACILITIES SHOWN ON THIS PLAT ARE HEREBY IRREVOCABLY DEDICATED TO THE CITY OF JACKSONVILLE, ITS SUCCESSORS AND ASSIGNS, AND ARE SUBJECT TO THE FOLLOWING COVENANTS WHICH SHALL RUN WITH THE LAND:

(1) THE DRAINAGE EASEMENTS HEREBY DEDICATED SHALL PERMIT THE CITY OF JACKSONVILLE, ITS SUCCESSORS, AND ASSIGNS, TO DISCHARGE INTO SAID LAKES/STORMWATER MANAGEMENT FACILITIES, WHICH THESE EASEMENTS TRAVERSE, ALL WATER WHICH MAY FALL OR COME UPON ALL DRIVES, COURTS AND CIRCLES, HEREBY DEDICATED, TOGETHER WITH ALL SUBSTANCES OR MATTER WHICH MAY FLOW OR PASS FROM DRIVES, COURTS AND CIRCLES, FROM ADJACENT LAND, OR FROM ANY OTHER SOURCE OF PUBLIC WATER INTO OR THROUGH SAID LAKE AND STORMWATER MANAGEMENT FACILITIES WITHOUT ANY LIABILITY WHATSOEVER ON THE PART OF THE CITY OF JACKSONVILLE, ITS SUCCESSORS, AND ASSIGNS, FOR ANY DAMAGES, INJURIES, OR LOSSES TO PERSONS OR PROPERTY RESULTING FROM THE ACCEPTANCE OR USE OF THESE DRAINAGE EASEMENTS BY THE CITY OF JACKSONVILLE, ITS SUCCESSORS, AND ASSIGNS.

(2) THE LAKES AND TREATMENT SYSTEMS SHOWN ON THIS PLAT ARE OWNED IN FEE SIMPLE TITLE BY THE ADJUTING OWNERS, THEIR SUCCESSORS AND ASSIGNS, UNLESS OTHERWISE SHOWN, AND ALL MAINTENANCE AND ANY OTHER MATTERS PERTAINING TO SAID LAKES/STORMWATER MANAGEMENT FACILITIES ARE THE RESPONSIBILITY OF THE OWNER, ITS SUCCESSOR AND ASSIGNS. THE CITY OF JACKSONVILLE, BY ACCEPTANCE OF THIS PLAT, ASSUMES NO RESPONSIBILITY WHATSOEVER FOR THE LAKES AND TREATMENT SYSTEMS;

(3) THE CITY OF JACKSONVILLE, ITS SUCCESSORS, AND ASSIGNS, SHALL NOT BE LIABLE NOR RESPONSIBLE FOR THE CREATION, OPERATION, FAILURE, OR DESTRUCTION OF ANY WATER LEVEL CONTROL EQUIPMENT WHICH MAY BE CONSTRUCTED OR INSTALLED BY THE DEVELOPER OR ANY OTHER PERSON WITHIN THE AREA OF THE LAND HEREBY PLATTED OR OF THE LAKES AND TREATMENT SYSTEMS SHOWN ON THIS PLAT, BUT SHALL HAVE THE RIGHT TO MODIFY THE WATER LEVEL INCLUDING THE REPAIR, REMOVAL OR REPLACEMENT OF THE LAKES/STORMWATER MANAGEMENT FACILITIES AND THE CONTROL STRUCTURES TO EFFECT ADEQUATE DRAINAGE.

"PULTE", ITS SUCCESSORS AND ASSIGNS OF THE LANDS DESCRIBED AND CAPTIONED HEREON, SHALL INDEMNIFY THE CITY OF JACKSONVILLE AND SAVE IT HARMLESS FROM SUITS, ACTIONS, DAMAGE, LIABILITY AND EXPENSE IN CONNECTION WITH LOSS OF LIFE, BODILY OR PERSONAL INJURY OR PROPERTY DAMAGE OR ANY OTHER DAMAGE ARISING FROM OR OUT OF ANY OCCURRENCE IN, UPON, AT, OR FROM THE LAKES/STORMWATER MANAGEMENT FACILITIES DESCRIBED ABOVE, OR ANY PART THEREOF OR OCCASIONED WHOLLY OR IN PART BY ANY ACT OR OMISSION OF ITS AGENTS, CONTRACTORS, EMPLOYEES, SERVANTS, LICENSEES OR CONCESSIONAIRES WITHIN EAST HAMPTON UNIT FOUR. THIS INDEMNIFICATION SHALL RUN WITH THE LAND AND THE SUCCESSORS AND ASSIGNS OF THE OWNERS AND SHALL BE SUBJECT TO IT.

### ADOPTION AND DEDICATION CONTINUED

ALL PRIVATE DRAINAGE EASEMENTS, PRIVATE ACCESS EASEMENTS, UPLAND BUFFER, AND TRACTS "A" THROUGH "M", INCLUSIVE, SHALL REMAIN PRIVATELY OWNED AND THE SOLE AND EXCLUSIVE PROPERTY OF "PULTE", ITS SUCCESSORS AND ASSIGNS, AND THE MAINTENANCE RESPONSIBILITIES OF WHICH SHALL BE THOSE OF "PULTE", ITS SUCCESSORS AND ASSIGNS.

TRACTS "N", "O" AND "P" SHALL REMAIN PRIVATELY OWNED AND THE SOLE AND EXCLUSIVE PROPERTY OF E.H. LIMITED PARTNERSHIP, ITS SUCCESSORS AND ASSIGNS; AND THE MAINTENANCE RESPONSIBILITIES OF WHICH SHALL BE THOSE OF E.H. LIMITED PARTNERSHIP, ITS SUCCESSORS AND ASSIGNS.

UTILITY EASEMENTS ARE HEREBY IRREVOCABLY AND WITHOUT RESERVATIONS DEDICATED TO JEA, ITS SUCCESSORS AND ASSIGNS.

"THOSE EASEMENTS DESIGNATED AS "JEA E.E." ARE HEREBY IRREVOCABLY DEDICATED TO THE JEA, ITS SUCCESSORS AND ASSIGNS, FOR ITS EXCLUSIVE USE IN CONJUNCTION WITH ITS "UNDERGROUND ELECTRIC SYSTEM.

"THOSE EASEMENTS DESIGNATED AS "JEA EASEMENT" ARE HEREBY IRREVOCABLY DEDICATED TO THE JEA ITS SUCCESSORS AND ASSIGNS, FOR ITS NON-EXCLUSIVE USE IN CONJUNCTION WITH ITS UNDERGROUND ELECTRIC SYSTEM; PROVIDED HOWEVER, THAT NO PARALLEL UTILITIES MAY BE INSTALLED WITHIN SAID EASEMENTS."

IN WITNESS WHEREOF, PULTE HOME CORPORATION, A MICHIGAN CORPORATION, HAS CAUSED THESE PRESENTS TO BE SIGNED BY ITS AUTHORIZED AGENT AND SEAL AFFIXED, THIS 6<sup>th</sup> DAY OF DECEMBER A.D., 2000.

[Signature]  
WITNESS

PULTE HOME CORPORATION

[Signature]  
CHRIS VANZANT  
AUTHORIZED AGENT

[Signature]  
WITNESS

[Signature]  
BRANDA M. MARTIN  
PRINT NAME

### STATE OF FLORIDA, COUNTY OF DUVAL

THE FOREGOING INSTRUMENT WAS ACKNOWLEDGED BEFORE ME THIS 6<sup>th</sup> DAY OF DECEMBER A.D., 2000, BY CHRIS VANZANT, AUTHORIZED AGENT OF PULTE HOME CORPORATION, A MICHIGAN CORPORATION AUTHORIZED TO DO BUSINESS IN THE STATE OF FLORIDA, ON BEHALF OF THE CORPORATION FOR THE USES AND PURPOSES THEREIN EXPRESSED, AND THAT HE AFFIXED HERETO THE OFFICIAL SEAL OF SAID CORPORATION. HE IS PERSONALLY KNOWN TO ME AND DID NOT TAKE AN OATH.

[Signature]  
(SIGN) MY COMMISSION EXPIRES: 3/5/01

[Signature]  
Debra J. McGregor  
Notary Public, State of Florida  
Commission No. CC 627436 (PRINT NAME) NOTARY PUBLIC, STATE OF FLORIDA  
My Commission Exp. 03/05/2001  
COMMISSION NO. CC 627436

IN WITNESS WHEREOF, E. H. LIMITED PARTNERSHIP, A FLORIDA LIMITED PARTNERSHIP, HAS CAUSED THESE PRESENTS TO BE SIGNED BY ITS AUTHORIZED AGENT AND SEAL AFFIXED, THIS 6<sup>th</sup> DAY OF DECEMBER A.D., 2000.

E. H. LIMITED PARTNERSHIP,  
A FLORIDA LIMITED PARTNERSHIP

[Signature]  
WITNESS

[Signature]  
Nancy E. Mangus  
PRINT NAME

[Signature]  
WITNESS

[Signature]  
BEAT C. SIMON  
PRINT NAME

BY: EAST HAMPTON GP, LLC,  
A DELAWARE LIMITED LIABILITY COMPANY,  
ITS GENERAL PARTNER

BY: LANDMAR GROUP, LLC,  
A DELAWARE LIMITED LIABILITY COMPANY,  
ITS MANAGER

BY: LANDMAR MANAGEMENT, INC.,  
A DELAWARE CORPORATION,  
ITS MANAGER

BY: [Signature]  
EDWARD E. BURR, ITS PRESIDENT

### STATE OF FLORIDA, COUNTY OF DUVAL

THE FOREGOING INSTRUMENT WAS ACKNOWLEDGED BEFORE ME THIS 6<sup>th</sup> DAY OF DECEMBER A.D., 2000, BY EDWARD E. BURR PRESIDENT OF LANDMAR MANAGEMENT, INC., A DELAWARE CORPORATION, THE MANAGER OF LANDMAR GROUP, LLC, A DELAWARE LIMITED LIABILITY COMPANY, THE MANAGER OF EAST HAMPTON GP, LLC, A DELAWARE LIMITED LIABILITY COMPANY, THE GENERAL PARTNER OF E. H. LIMITED PARTNERSHIP, A FLORIDA LIMITED PARTNERSHIP ON BEHALF OF THE CORPORATION HE IS PERSONALLY KNOWN TO ME OR HAS PRODUCED \_\_\_\_\_ AS IDENTIFICATION.

[Signature]  
(SIGN) MY COMMISSION EXPIRES: 3/5/01

[Signature]  
Debra J. McGregor  
Notary Public, State of Florida  
Commission No. CC 627436 (PRINT NAME) NOTARY PUBLIC, STATE OF FLORIDA  
My Commission Exp. 03/05/2001  
COMMISSION NO. CC 627436

### SURVEYOR'S CERTIFICATE

THIS IS TO CERTIFY THAT THE UNDERSIGNED IS A CURRENTLY LICENSED AND REGISTERED LAND SURVEYOR IN AND BY THE STATE OF FLORIDA AND AS SUCH DOES HEREBY CERTIFY THAT THIS PLAT IS A TRUE AND CORRECT REPRESENTATION OF THE LANDS SURVEYED UNDER HIS RESPONSIBLE DIRECTION AND SUPERVISION AND THAT THE SURVEY DATA COMPLIES WITH ALL REQUIREMENTS OF CHAPTER 177, FLORIDA STATUTES, AND FURTHER CERTIFIES THAT PERMANENT REFERENCE MONUMENTS HAVE BEEN SET AND THAT PERMANENT CONTROL POINTS WILL BE SET ACCORDING TO THE REQUIREMENTS OF CHAPTER 177. SIGNED THIS 19<sup>th</sup> DAY OF DECEMBER A.D., 2000.

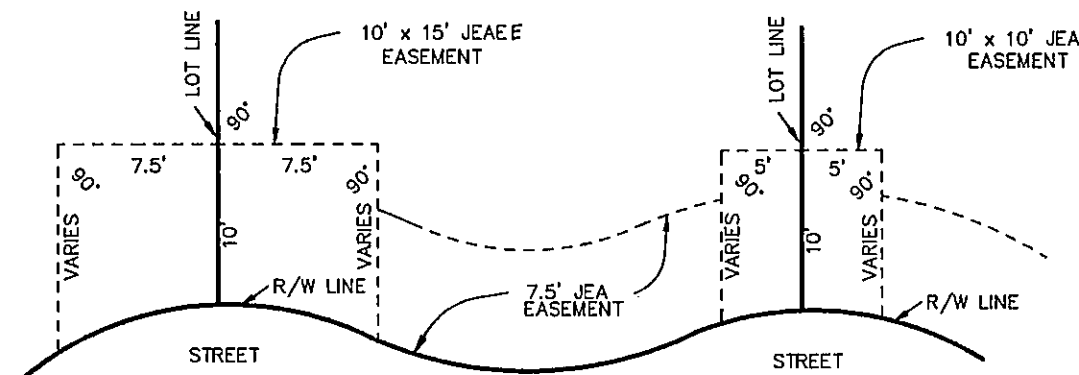
CLARSON & ASSOCIATES, INC.  
1643 NALDO AVENUE  
JACKSONVILLE, FLORIDA 32207  
PHONE: (904) 396 - 2623  
FAX: (904) 396 - 2633

BY: [Signature]  
JOSE A. HILL, JR.  
STATE OF REGISTERED LAND SURVEYOR No. 4487, STATE OF FLORIDA.  
PSD # 00-027  
CITY DEVELOPMENT # 1546.12

PREPARED BY:  
CLARSON & ASSOCIATES, INC.  
PROFESSIONAL LAND SURVEYORS  
1643 NALDO AVENUE  
JACKSONVILLE, FLORIDA, 32207  
PHONE: (904)-396-2623 FAX: (904)-396-2633

# EAST HAMPTON UNIT FOUR

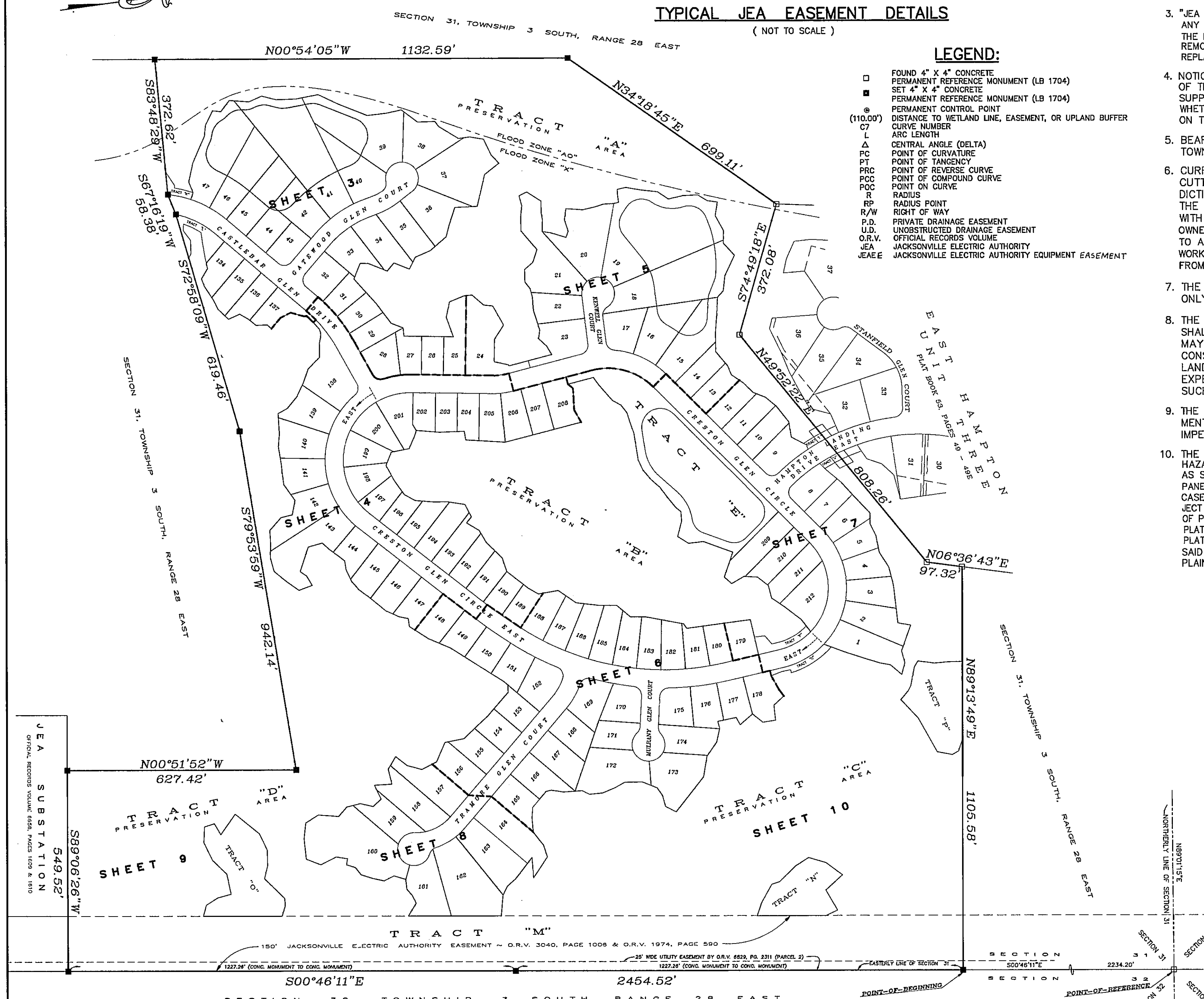
BEING A PORTION OF SECTION 31, TOWNSHIP 3 SOUTH, RANGE 28 EAST, CITY OF JACKSONVILLE, DUVAL COUNTY, FLORIDA.



**TYPICAL JEA EASEMENT DETAILS**  
(NOT TO SCALE)

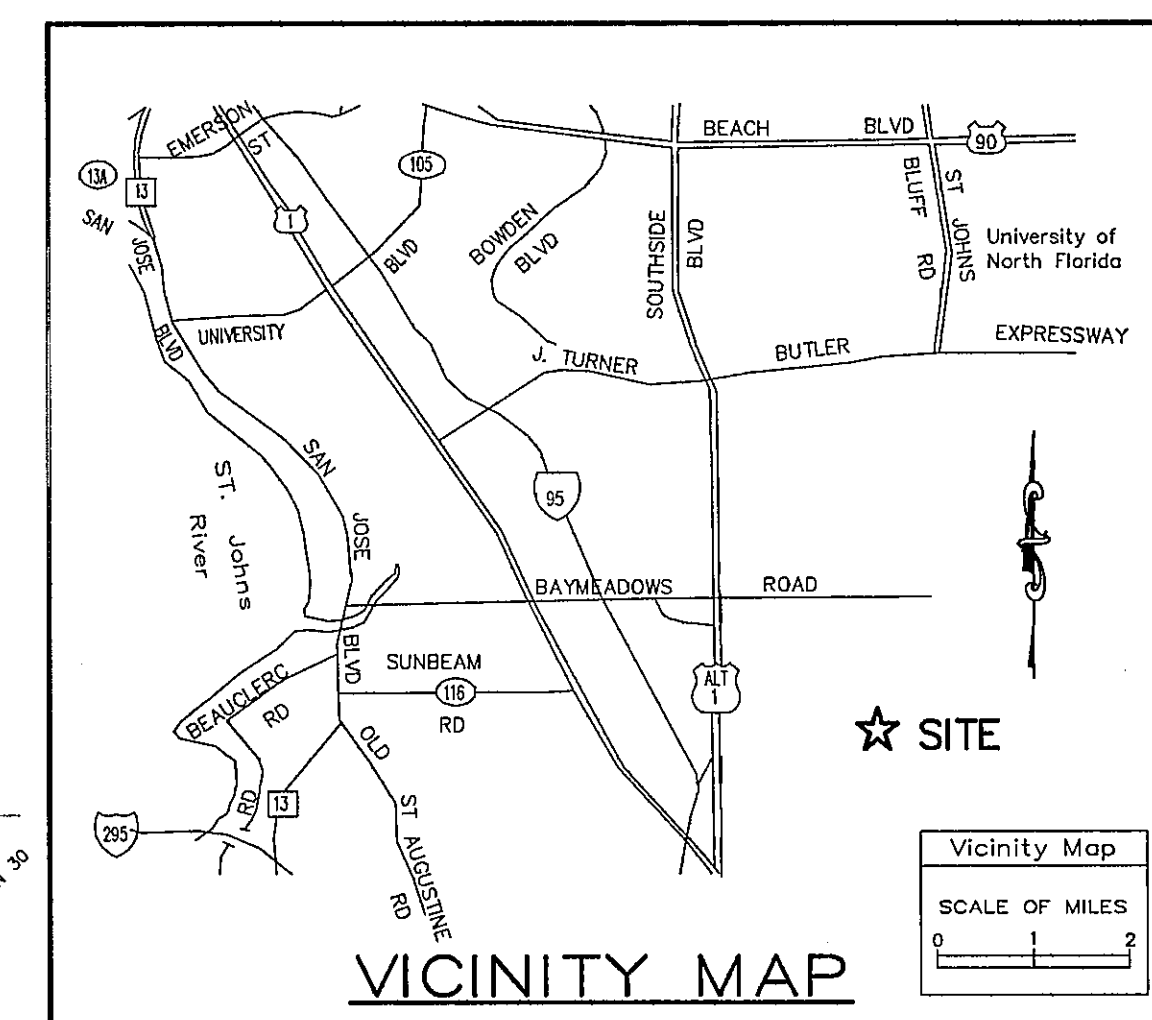
**LEGEND:**

□	FOUND 4" X 4" CONCRETE PERMANENT REFERENCE MONUMENT (LB 1704)
■	SET 4" X 4" CONCRETE PERMANENT REFERENCE MONUMENT (LB 1704)
●	PERMANENT CONTROL POINT
(110.00')	DISTANCE TO WETLAND LINE, EASEMENT, OR UPLAND BUFFER
C7	CURVE NUMBER
L	ARC LENGTH
Δ	CENTRAL ANGLE (DELTA)
PC	POINT OF CURVATURE
PT	POINT OF TANGENCY
PRC	POINT OF REVERSE CURVE
PCC	POINT OF COMPOUND CURVE
POC	POINT ON CURVE
R	RADIUS
RP	RADIUS POINT
R/W	RIGHT OF WAY
P.D.	PRIVATE DRAINAGE EASEMENT
U.D.	UNOBSTRUCTED DRAINAGE EASEMENT
O.R.V.	OFFICIAL RECORDS VOLUME
JEA	JACKSONVILLE ELECTRIC AUTHORITY
JEAE	JACKSONVILLE ELECTRIC AUTHORITY EQUIPMENT EASEMENT



**NOTES:**

- CERTAIN DENOTED EASEMENTS ARE RESERVED FOR THE EXCLUSIVE USE OF THE JEA IN CONJUNCTION WITH THE UNDERGROUND ELECTRIC DISTRIBUTION SYSTEM.
- "JEA E.E." DENOTES JEA EQUIPMENT EASEMENT. THESE EASEMENT SHALL REMAIN TOTALLY UNOBSTRUCTED BY ANY IMPROVEMENTS THAT MAY IMPEDE THE USE AND ACCESS OF SAID EASEMENT BY THE JEA.
- "JEA E." DENOTES JEA EASEMENT. THESE EASEMENT SHALL REMAIN TOTALLY UNOBSTRUCTED ANY PERMANENT IMPROVEMENTS WHICH MAY IMPEDE THE USE OF SAID EASEMENT BY THE JEA THE INSTALLATION OF FENCES, HEDGES, AND LANDSCAPING IS PERMISSIBLE BUT SUBJECT TO REMOVAL BY THE JEA AT THE EXPENSE OF EACH LOT OWNER FOR THE REMOVAL AND FOR REPLACEMENT OF SUCH ITEMS.
- NOTICE: THIS PLAT, AS RECORDED IN ITS GRAPHIC FORM, IS THE OFFICIAL DEPICTION OF THE SUBDIVIDED LANDS DESCRIBED HEREIN AND WILL IN NO CIRCUMSTANCES BE SUPPLANTED IN AUTHORITY BY ANY OTHER GRAPHIC OR DIGITAL FORM OF THE PLAT, WHETHER GRAPHIC OR DIGITAL. THERE MAY BE ADDITIONAL RESTRICTIONS NOT RECORDED ON THIS PLAT THAT MAY BE FOUND IN THE PUBLIC RECORDS OF DUVAL COUNTY, FL.
- BEARING REFERENCE: S89°01'15"W FOR BEARING OF NORTH LINE OF SECTION 31, TOWNSHIP 3 SOUTH, RANGE 28 EAST AS PER RECORDED DEED.
- CURRENT LAW PROVIDES THAT NO CONSTRUCTION, FILLING, REMOVAL OF EARTH, CUTTING OF TREES OR OTHER PLANTS SHALL TAKE PLACE WITHIN THE JURISDICTIONAL WETLANDS PRESERVATION AREA AS DEPICTED ON THIS PLAT WITHOUT THE WRITTEN APPROVAL OF DUVAL COUNTY AND OTHER REGULATORY AGENCIES WITH JURISDICTION OVER SUCH WETLANDS. IT IS THE RESPONSIBILITY OF THE LOT OWNER, HIS AGENT AND ENTITY PERFORMING ANY ACTIVITY WITHIN THE WETLAND AREA TO ACQUIRE THE NECESSARY WRITTEN APPROVAL PRIOR TO THE BEGINNING OF ANY WORK. THIS WETLANDS PRESERVATION AREA LINE MAY BE SUPERCEDED AND REDEFINED FROM TIME TO TIME BY THE APPROPRIATE GOVERNMENT AGENCIES.
- THE APPROXIMATE TOP OF BANK SHOWN HEREON IS THE PROPOSED BANK LINE ONLY AND IS NOT TO BE CONSTRUED AS AN ACTUAL AS-BUILT LOCATION.
- THE EASEMENTS SHOWN HEREON AND DESIGNATED AS UNOBSTRUCTED EASEMENTS SHALL REMAIN TOTALLY UNOBSTRUCTED BY ANY PERMANENT IMPROVEMENTS WHICH MAY IMPEDE THE USE OF SAID EASEMENT BY THE CITY OF JACKSONVILLE. THE CONSTRUCTION OF DRIVEWAYS AND THE INSTALLATION OF FENCES, HEDGES, AND LANDSCAPING IS PERMISSIBLE BUT SUBJECT TO REMOVAL BY THE CITY AT THE EXPENSE OF EACH LOT OWNER FOR THE REMOVAL AND/OR REPLACEMENT OF SUCH ITEMS.
- THE EASEMENTS SHOWN HEREON AND DESIGNATED AS ACCESS/UNOBSTRUCTED EASEMENTS SHALL REMAIN TOTALLY UNOBSTRUCTED BY ANY IMPROVEMENTS THAT MAY IMPEDE THE USE AND ACCESS OF SAID EASEMENT BY THE CITY OF JACKSONVILLE.
- THE LANDS PLATTED HEREON ALL LIE WITHIN FLOOD ZONE "X" AND SPECIAL FLOOD HAZARD AREA (SFHA) "AO" WITH A BASE FLOOD ELEVATION (BFE) OF 2 FEET IN DEPTH AS SCALED FROM THE FLOOD INSURANCE RATE MAP (FIRM) COMMUNITY NUMBER 120077 PANEL NUMBERS 0219 AND 0238, SUFFIX E. A CONDITIONAL LETTER OF MAP REVISION (CLOMR) CASE NUMBER 98-04-790C, DATED: AUGUST 4, 1998, HAS BEEN ISSUED FOR THIS PROJECT AND IS ON FILE AT THE COMMUNITY'S FLOODPLAIN MANAGEMENT REPOSITORY, DEPARTMENT OF PUBLIC WORKS, CITY OF JACKSONVILLE. THE FIRM INFORMATION AND DELINEATIONS ON THIS PLAT ARE VALID ONLY FOR DATES UP TO AND INCLUDING THE EFFECTIVE RECORDING DATE OF THE PLAT. THERE MAY HAVE BEEN SUBSEQUENT REVISIONS AFTER THIS DATE THAT WILL SUPERSEDE SAID INFORMATION. INQUIRIES FOR THIS SHOULD BE MADE TO THE COMMUNITY'S FLOODPLAIN MANAGEMENT REPOSITORY, DEPARTMENT OF PUBLIC WORKS, CITY OF JACKSONVILLE.



JEA SUBSTATION  
OFFICIAL RECORDS VOLUME 6554, PAGES 1636 & 1610  
549.52'  
589°06'26"W

**KEY MAP**      1" = 200'

PSD # 00-027  
CITY DEVELOPMENT # 1546.12

PREPARED BY:  
**CLARSON AND ASSOCIATES, INC.**  
PROFESSIONAL LAND SURVEYORS  
1643 NALDO AVENUE  
JACKSONVILLE, FLORIDA, 32207  
PHONE: (904)-398-2623 FAX: (904)-398-2633

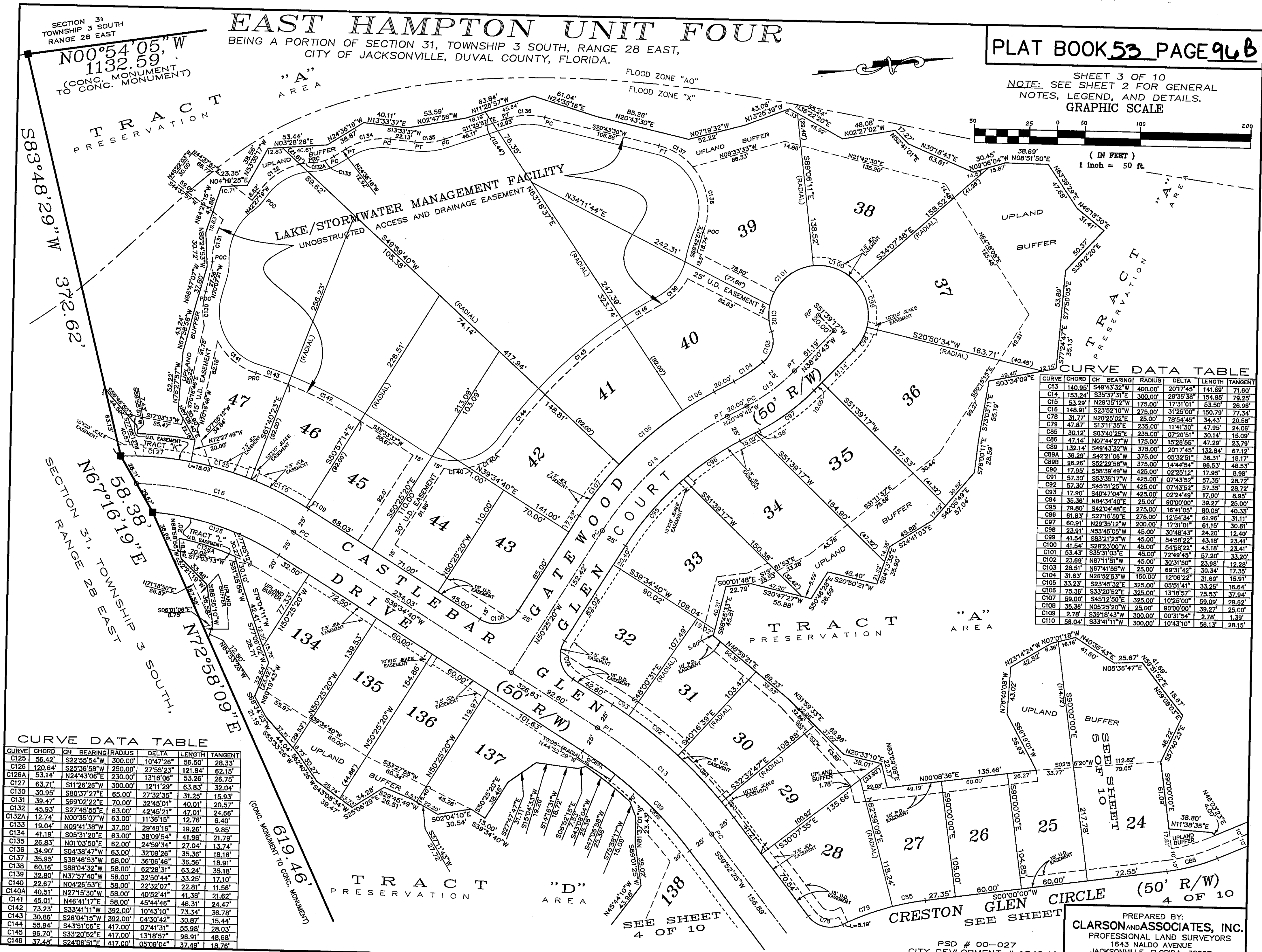
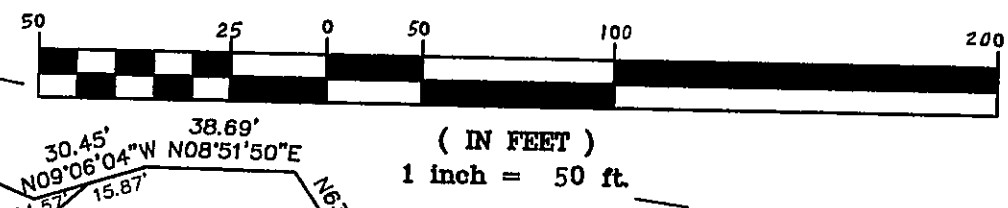
SECTION 31  
TOWNSHIP 3 SOUTH  
RANGE 28 EAST

# EAST HAMPTON UNIT FOUR

BEING A PORTION OF SECTION 31, TOWNSHIP 3 SOUTH, RANGE 28 EAST,  
CITY OF JACKSONVILLE, DUVAL COUNTY, FLORIDA.

PLAT BOOK 53 PAGE 96B

SHEET 3 OF 10  
NOTE: SEE SHEET 2 FOR GENERAL  
NOTES, LEGEND, AND DETAILS.  
GRAPHIC SCALE



**CURVE DATA TABLE**

CURVE	CHORD	CH BEARING	RADIUS	DELTA	LENGTH	TANGENT
C125	56.42'	S22°55'54"W	300.00'	10°47'28"	56.50'	28.33'
C126	120.64'	S25°36'58"W	250.00'	27°55'23"	121.84'	62.15'
C126A	53.14'	N24°43'06"E	230.00'	13°16'06"	53.26'	26.75'
C127	63.71'	S11°26'28"W	300.00'	12°11'29"	63.83'	32.04'
C130	30.95'	S80°37'27"E	85.00'	27°32'36"	31.25'	15.93'
C131	39.47'	S69°02'22"E	70.00'	32°45'01"	40.01'	20.57'
C132	45.93'	S27°45'55"E	63.00'	42°45'21"	47.01'	24.86'
C132A	12.74'	N00°35'07"W	63.00'	11°36'15"	12.76'	6.40'
C133	19.04'	N09°41'38"W	37.00'	29°49'16"	19.26'	9.85'
C134	41.19'	S05°31'20"E	63.00'	38°09'54"	41.96'	21.79'
C135	26.83'	N01°03'50"E	82.00'	24°58'34"	27.04'	13.74'
C136	34.90'	S04°38'47"W	63.00'	32°09'28"	36.56'	19.91'
C137	35.95'	S38°46'53"W	58.00'	36°06'46"	36.56'	19.91'
C138	60.16'	S88°04'32"W	58.00'	62°28'31"	63.24'	35.18'
C139	32.80'	N37°57'40"W	58.00'	32°50'44"	33.25'	17.10'
C140	22.67'	N04°26'53"E	58.00'	22°32'07"	22.81'	11.56'
C140A	40.51'	N27°15'30"W	58.00'	40°52'41"	41.38'	21.62'
C141	45.01'	N46°41'17"E	58.00'	45°44'46"	46.31'	24.47'
C142	73.23'	S33°41'11"W	392.00'	10°43'10"	73.34'	36.78'
C143	30.86'	S26°04'15"W	392.00'	04°30'42"	30.87'	15.44'
C144	55.94'	S43°51'06"E	417.00'	07°41'31"	55.98'	28.03'
C145	96.70'	S33°20'52"E	417.00'	13°18'57"	96.81'	48.68'
C146	37.48'	S24°06'51"E	417.00'	05°09'04"	37.49'	18.76'

**CURVE DATA TABLE**

CURVE	CHORD	CH BEARING	RADIUS	DELTA	LENGTH	TANGENT
C13	140.95'	S49°43'32"W	400.00'	20°17'48"	141.89'	71.60'
C14	153.24'	S35°37'51"E	300.00'	29°35'38"	154.95'	79.25'
C15	53.29'	N29°35'12"W	175.00'	17°31'01"	53.50'	28.98'
C16	148.91'	S23°52'10"W	275.00'	31°25'00"	150.79'	77.34'
C78	31.77'	N20°28'02"E	25.00'	78°54'45"	34.43'	20.58'
C79	47.87'	S13°11'35"E	235.00'	11°41'30"	47.95'	24.06'
C85	30.12'	S03°40'25"E	235.00'	07°20'51"	30.14'	15.09'
C86	47.14'	N07°44'27"W	175.00'	15°28'55"	47.29'	23.78'
C88	132.14'	S49°43'32"W	375.00'	20°17'45"	132.84'	67.12'
C88A	38.29'	S42°21'08"W	375.00'	05°32'51"	38.31'	18.17'
C88B	86.26'	S22°29'58"W	375.00'	14°44'54"	86.53'	48.53'
C90	17.95'	S58°39'49"W	425.00'	02°25'12"	17.95'	8.98'
C91	57.30'	S33°35'17"W	425.00'	07°43'52"	57.35'	28.72'
C92	57.30'	S45°51'25"W	425.00'	07°43'52"	57.35'	28.72'
C93	17.90'	S40°47'04"W	425.00'	02°24'49"	17.90'	8.95'
C94	35.36'	N84°34'40"E	25.00'	90°00'00"	39.27'	25.00'
C95	79.80'	S42°04'48"E	275.00'	16°41'05"	80.08'	40.33'
C96	61.83'	S27°16'59"E	275.00'	12°54'34"	61.96'	31.11'
C97	60.81'	N29°35'12"W	200.00'	17°31'01"	61.15'	30.81'
C98	23.91'	S53°45'05"W	45.00'	30°48'43"	24.20'	12.40'
C99	41.54'	S83°21'23"W	45.00'	54°58'22"	43.18'	23.41'
C100	41.54'	S28°23'00"W	45.00'	54°58'22"	43.18'	23.41'
C101	53.43'	S35°31'03"E	45.00'	72°48'43"	57.20'	33.20'
C102	23.69'	N87°11'51"W	45.00'	30°31'50"	23.98'	12.28'
C103	28.51'	N67°41'55"W	25.00'	69°31'42"	30.34'	17.35'
C104	31.63'	N26°52'53"W	150.00'	12°08'22"	31.69'	15.91'
C105	33.23'	S23°45'32"E	325.00'	05°51'41"	33.25'	16.64'
C106	75.36'	S33°20'52"E	325.00'	13°18'57"	75.53'	37.94'
C107	59.00'	S45°12'50"E	325.00'	10°25'00"	59.09'	29.62'
C108	35.36'	N05°25'20"W	25.00'	90°00'00"	39.27'	25.00'
C109	2.78'	S39°18'43"W	300.00'	00°31'54"	2.78'	1.39'
C110	56.04'	S34°41'11"W	300.00'	10°43'10"	56.13'	28.15'

PREPARED BY:  
**CLARSON AND ASSOCIATES, INC.**  
PROFESSIONAL LAND SURVEYORS  
1643 NALDO AVENUE  
JACKSONVILLE, FLORIDA, 32207  
PHONE: (904)-398-2823 FAX: (904)-398-2633

PSD # 00-027  
CITY DEVELOPMENT # 1546.12

SEE SHEET 4 OF 10

CRESTON GLEN CIRCLE (50' R/W) 4 OF 10  
SEE SHEET 10

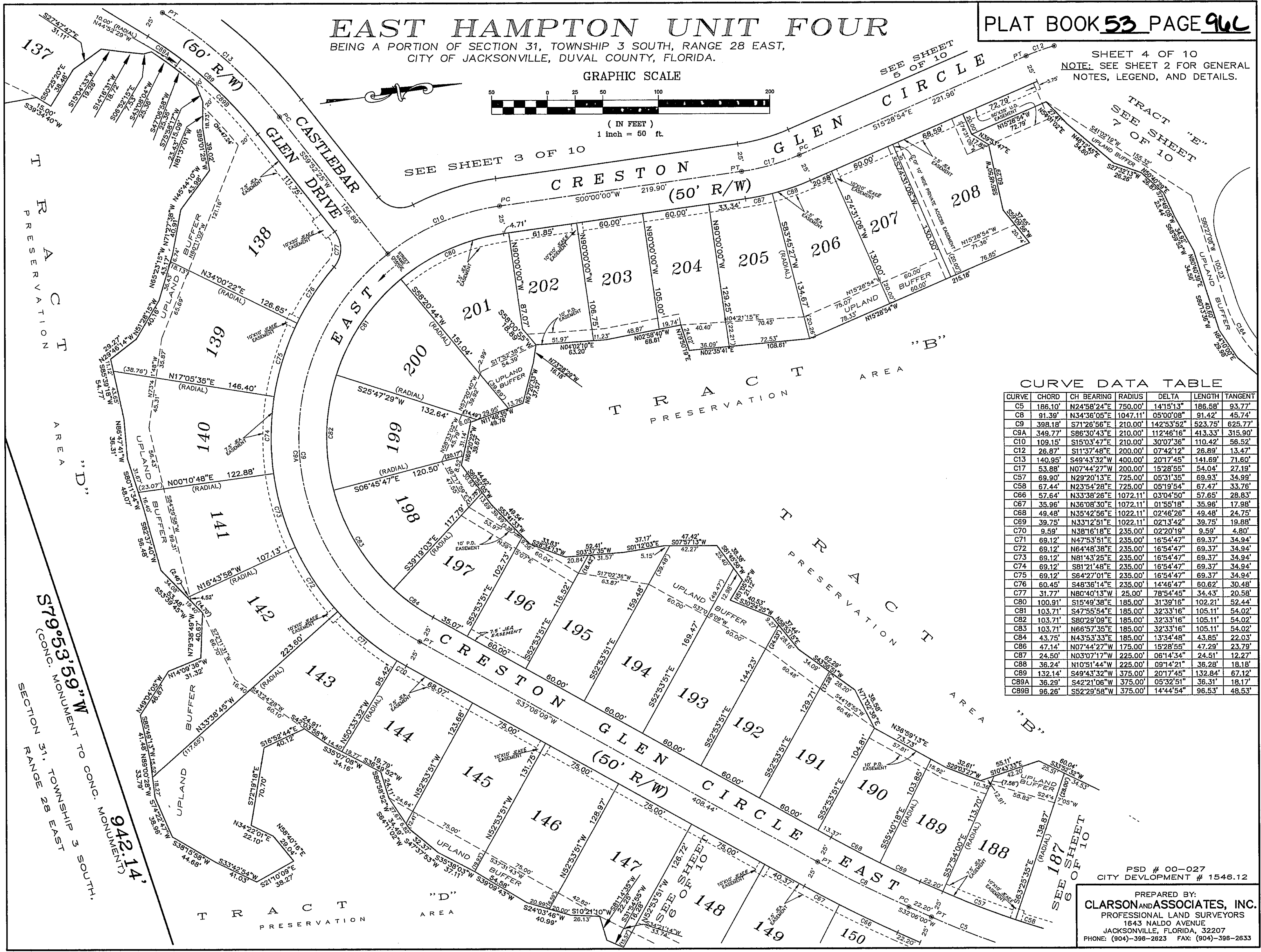
# EAST HAMPTON UNIT FOUR

BEING A PORTION OF SECTION 31, TOWNSHIP 3 SOUTH, RANGE 28 EAST,  
CITY OF JACKSONVILLE, DUVAL COUNTY, FLORIDA.

PLAT BOOK **53** PAGE **96L**

SHEET 4 OF 10  
NOTE: SEE SHEET 2 FOR GENERAL NOTES, LEGEND, AND DETAILS.

GRAPHIC SCALE



**CURVE DATA TABLE**

CURVE	CHORD	CH BEARING	RADIUS	DELTA	LENGTH	TANGENT
C5	186.10'	N24°58'24\"E	750.00'	14°15'13\"	186.58'	93.77'
C8	91.39'	N34°36'05\"E	1047.11'	05°00'08\"	91.42'	45.74'
C9	398.18'	S71°26'56\"E	210.00'	142°53'52\"	523.75'	625.77'
C9A	349.77'	S86°30'43\"E	210.00'	112°46'16\"	413.33'	315.90'
C10	108.15'	S15°03'47\"E	210.00'	30°07'36\"	110.42'	56.52'
C12	28.87'	S11°37'48\"E	200.00'	07°42'12\"	28.89'	13.47'
C13	140.95'	S49°43'32\"W	400.00'	20°17'45\"	141.69'	71.60'
C17	53.88'	N07°44'27\"W	200.00'	15°28'55\"	54.04'	27.19'
C57	69.90'	N29°20'13\"E	725.00'	05°31'35\"	69.93'	34.99'
C58	67.44'	N23°54'28\"E	725.00'	05°19'54\"	67.47'	33.76'
C66	57.64'	N33°38'26\"E	1072.11'	03°04'50\"	57.65'	28.83'
C67	35.96'	N36°08'30\"E	1072.11'	01°55'18\"	35.96'	17.98'
C68	49.48'	N35°42'56\"E	1022.11'	02°46'26\"	49.48'	24.75'
C69	39.75'	N33°12'51\"E	1022.11'	02°13'42\"	39.75'	19.88'
C70	9.59'	N38°16'18\"E	235.00'	02°20'19\"	9.59'	4.80'
C71	69.12'	N47°53'51\"E	235.00'	16°54'47\"	69.37'	34.94'
C72	69.12'	N64°48'38\"E	235.00'	16°54'47\"	69.37'	34.94'
C73	69.12'	N81°43'25\"E	235.00'	16°54'47\"	69.37'	34.94'
C74	69.12'	S81°21'48\"E	235.00'	16°54'47\"	69.37'	34.94'
C75	69.12'	S64°27'01\"E	235.00'	16°54'47\"	69.37'	34.94'
C76	60.45'	S48°36'14\"E	235.00'	14°46'47\"	60.62'	30.48'
C77	31.77'	N80°40'13\"W	25.00'	78°54'45\"	34.43'	20.58'
C80	100.91'	S15°49'38\"E	185.00'	31°39'16\"	102.21'	52.44'
C81	103.71'	S47°55'54\"E	185.00'	32°33'16\"	105.11'	54.02'
C82	103.71'	S80°29'09\"E	185.00'	32°33'16\"	105.11'	54.02'
C83	103.71'	N66°57'35\"E	185.00'	32°33'16\"	105.11'	54.02'
C84	43.75'	N43°53'33\"E	185.00'	13°34'48\"	43.85'	22.03'
C86	47.14'	N07°44'27\"W	175.00'	15°28'55\"	47.29'	23.79'
C87	24.50'	N03°07'17\"W	225.00'	06°14'34\"	24.51'	12.27'
C88	36.24'	N10°51'44\"W	225.00'	09°14'21\"	36.28'	18.18'
C89	132.14'	S49°43'32\"W	375.00'	20°17'45\"	132.84'	67.12'
C89A	36.29'	S42°21'06\"W	375.00'	05°32'51\"	36.31'	18.17'
C89B	96.26'	S52°29'58\"W	375.00'	14°44'54\"	96.53'	48.53'

PSD # 00-027  
CITY DEVELOPMENT # 1546.12

PREPARED BY:  
**CLARSON ASSOCIATES, INC.**  
PROFESSIONAL LAND SURVEYORS  
1643 NALDO AVENUE  
JACKSONVILLE, FLORIDA, 32207  
PHONE: (904)-396-2623 FAX: (904)-396-2633

# EAST HAMPTON UNIT FOUR

BEING A PORTION OF SECTION 31,  
TOWNSHIP 3 SOUTH, RANGE 28 EAST  
CITY OF JACKSONVILLE, DUVAL COUNTY, FLORIDA.

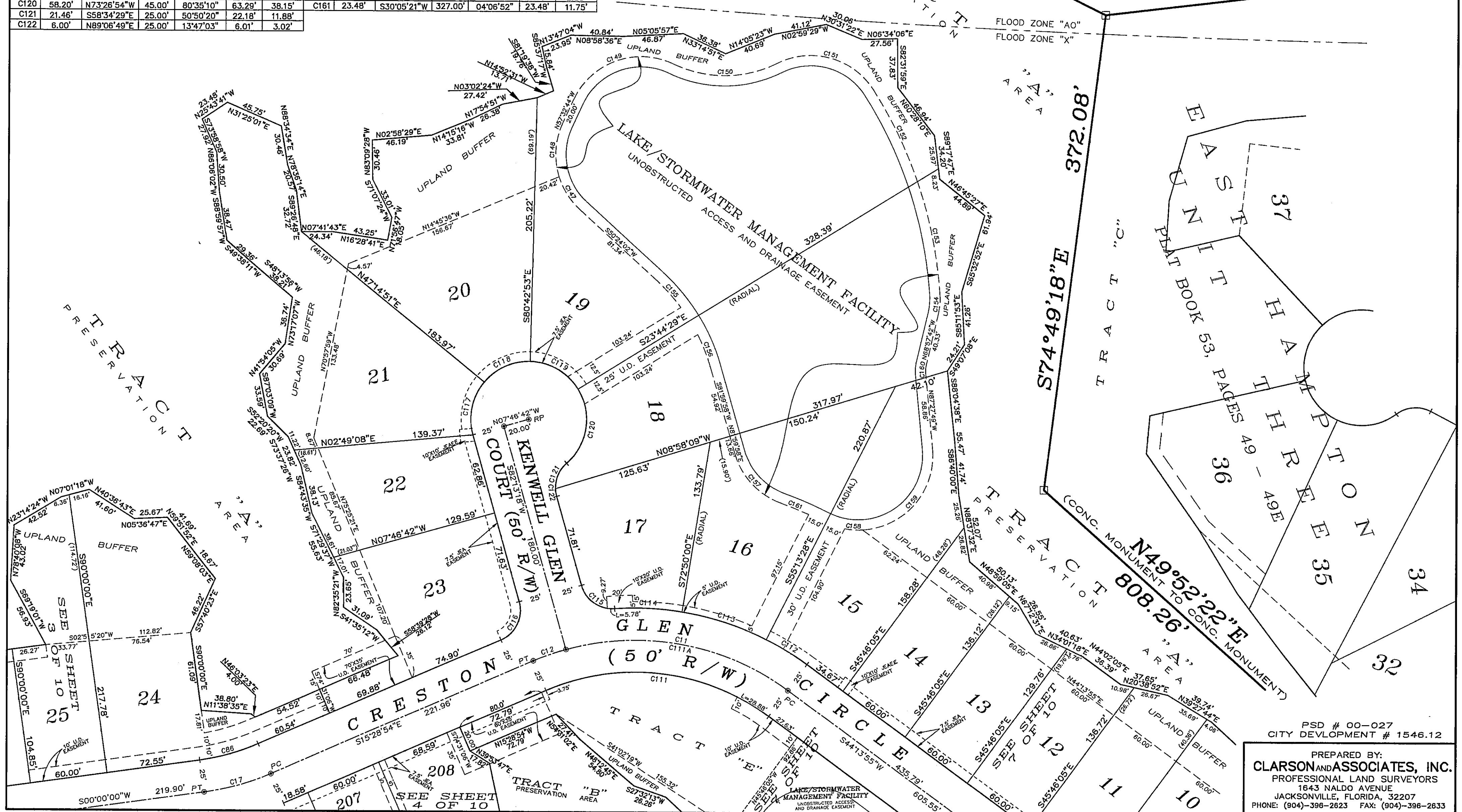
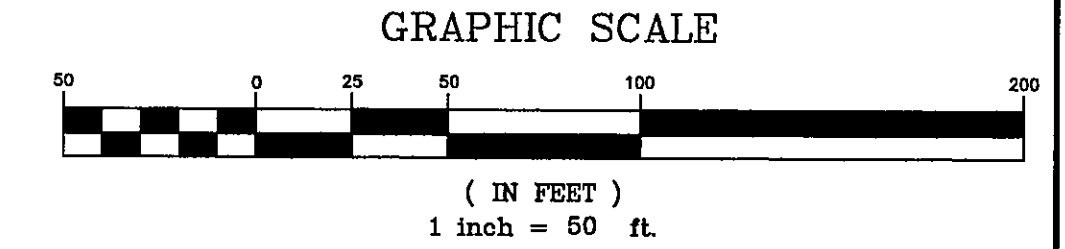
PLAT BOOK 53 PAGE 961D

SHEET 5 OF 10  
NOTE: SEE SHEET 2 FOR GENERAL  
NOTES, LEGEND, AND DETAILS.

CURVE DATA TABLE

CURVE	CHORD	CH BEARING	RADIUS	DELTA	LENGTH	TANGENT	CURVE	CHORD	CH BEARING	RADIUS	DELTA	LENGTH	TANGENT
C11	175.38'	S18°13'36"W	200.00'	52°00'37"	181.55'	97.57'	C147	30.21'	N65°29'50"E	58.00'	30°11'37"	30.56'	15.65'
C12	26.87'	S11°37'48"E	200.00'	07°42'12"	26.89'	13.47'	C148	41.44'	S78°28'33"E	58.00'	41°51'38"	42.38'	22.18'
C17	53.88'	N07°44'27"W	200.00'	15°28'55"	54.04'	27.19'	C149	82.71'	S12°03'53"E	58.00'	90°57'42"	92.08'	58.98'
C86	47.14'	N07°44'27"W	175.00'	15°28'55"	47.29'	23.79'	C150	80.81'	N07°21'56"E	92.00'	52°06'06"	83.66'	44.97'
C111	174.24'	S14°22'30"W	175.00'	59°42'49"	182.39'	100.45'	C151	77.79'	S23°25'42"W	58.00'	84°13'39"	85.26'	52.43'
C111A	199.13'	S14°22'30"W	200.00'	59°42'49"	208.44'	114.81'	C152	78.47'	S72°12'22"W	338.11'	13°19'41"	78.65'	39.50'
C112	37.09'	S39°30'13"W	225.00'	09°27'24"	37.14'	18.61'	C153	88.63'	S86°24'05"W	338.11'	15°03'44"	88.88'	44.70'
C113	68.88'	S25°58'16"W	225.00'	17°36'31"	69.15'	34.85'	C154	17.25'	N77°30'53"W	58.00'	17°06'22"	17.32'	8.72'
C114	52.53'	S10°27'46"W	225.00'	13°24'29"	52.65'	26.45'	C155	28.13'	S55°53'26"W	147.00'	10°58'49"	28.17'	14.13'
C115	31.62'	N42°59'24"E	25.00'	78°27'47"	34.24'	20.41'	C156	27.83'	S76°34'05"W	147.00'	10°51'46"	27.87'	13.98'
C116	32.90'	N56°37'48"W	25.00'	82°17'48"	35.91'	21.85'	C157	52.63'	N55°00'56"E	58.00'	53°58'03"	54.63'	29.53'
C117	41.85'	S70°04'15"E	45.00'	55°24'54"	43.52'	23.63'	C158	14.01'	N11°18'05"E	58.00'	13°52'20"	14.04'	7.06'
C118	39.14'	S16°35'07"E	45.00'	51°33'22"	40.49'	21.73'	C159	83.32'	N41°32'57"W	58.00'	91°49'44"	92.96'	59.88'
C119	42.99'	S37°43'33"W	45.00'	57°03'57"	44.82'	24.47'	C160	5.68'	S78°35'05"E	17.00'	18°14'46"	5.71'	2.88'
C120	58.20'	N73°26'54"W	45.00'	80°35'10"	63.29'	38.15'	C161	23.48'	S30°05'21"W	327.00'	04°06'52"	23.48'	11.75'
C121	21.46'	S58°34'29"E	25.00'	50°50'20"	22.18'	11.88'							
C122	6.00'	N89°06'49"E	25.00'	13°47'03"	6.01'	3.02'							

CURVE DATA TABLE



PSD # 00-027  
CITY DEVELOPMENT # 1546.12

PREPARED BY:  
**CLARSON AND ASSOCIATES, INC.**  
PROFESSIONAL LAND SURVEYORS  
1843 NALDO AVENUE  
JACKSONVILLE, FLORIDA, 32207  
PHONE: (904)-396-2823 FAX: (904)-396-2633

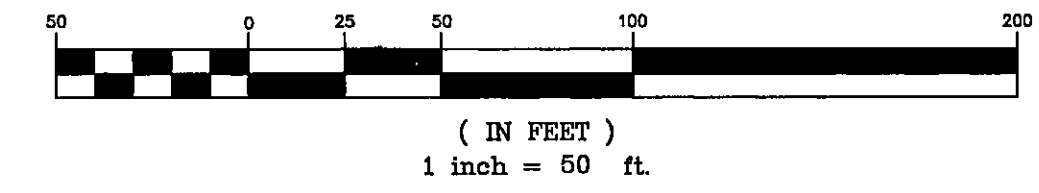
# EAST HAMPTON UNIT FOUR

BEING A PORTION OF SECTION 31, TOWNSHIP 3 SOUTH, RANGE 28 EAST,  
CITY OF JACKSONVILLE, DUVAL COUNTY, FLORIDA.

PLAT BOOK <sup>53</sup> PAGE <sup>96E</sup>

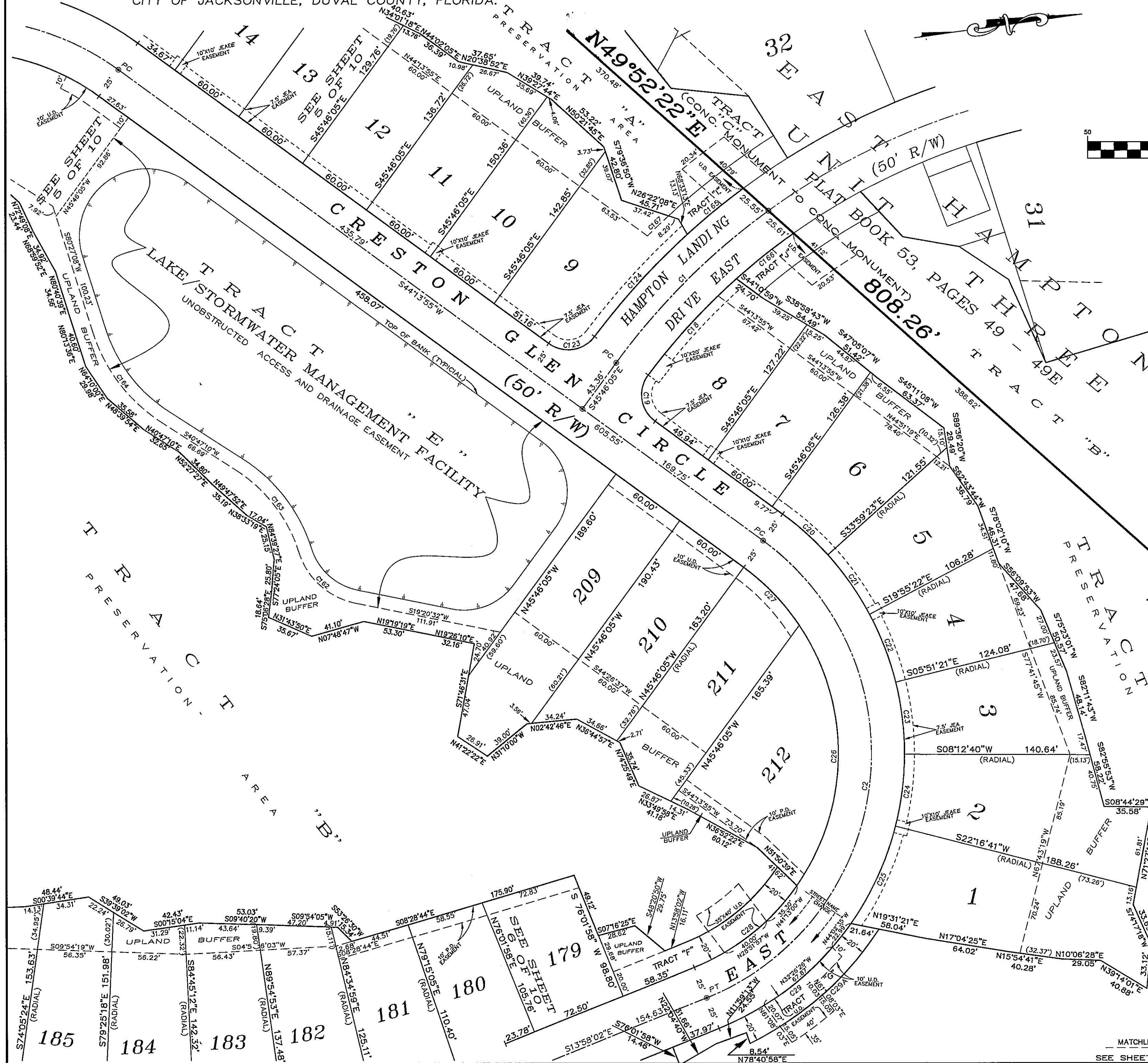
SHEET 7 OF 10  
NOTE: SEE SHEET 2 FOR GENERAL NOTES, LEGEND, AND DETAILS.

GRAPHIC SCALE



CURVE DATA TABLE

CURVE	CHORD	CH BEARING	RADIUS	DELTA	LENGTH	TANGENT
C1	163.21'	S36°49'34"E	525.00'	17°53'02"	163.87'	82.61'
C2	349.51'	N74°52'03"W	200.00'	121°48'03"	425.17'	359.34'
C18	98.89'	S39°17'33"E	500.00'	11°21'00"	99.05'	49.69'
C19	35.60'	N89°37'56"E	25.00'	90°48'02"	39.62'	25.35'
C20	46.17'	S50°07'16"W	225.00'	11°46'42"	46.25'	23.21'
C21	55.10'	S63°02'38"W	225.00'	14°04'01"	55.24'	27.76'
C22	55.10'	S77°06'39"W	225.00'	14°04'01"	55.24'	27.76'
C23	55.10'	N88°49'20"W	225.00'	14°04'01"	55.24'	27.76'
C24	55.10'	N74°45'19"W	225.00'	14°04'01"	55.24'	27.76'
C25	81.04'	N57°20'48"W	225.00'	20°45'02"	81.49'	41.19'
C26	197.52'	N81°21'40"W	175.00'	68°42'42"	209.87'	119.63'
C27	60.93'	S54°15'27"W	175.00'	20°03'04"	61.24'	30.94'
C28	99.52'	N30°29'10"W	175.00'	33°02'17"	100.91'	51.90'
C29	127.82'	N30°28'10"W	225.00'	33°00'15"	129.61'	66.66'
C29A	130.64'	N33°31'43"W	245.00'	30°55'27"	132.23'	67.77'
C123	35.15'	N00°26'15"W	25.00'	89°20'20"	38.98'	24.71'
C124	104.73'	S39°38'37"E	550.00'	10°55'35"	104.89'	52.60'
C162	57.95'	N50°00'57"E	56.80'	61°20'50"	60.82'	33.69'
C163	77.83'	S60°44'16"W	114.05'	39°54'12"	79.43'	41.40'
C164	86.60'	N60°37'09"E	127.62'	39°39'58"	88.35'	46.03'
C165	55.00'	S31°18'52"E	550.00'	05°43'55"	55.02'	27.53'
C166	55.44'	S30°26'23"E	500.00'	06°21'22"	55.47'	27.76'
C167	22.06'	S35°29'06"E	570.00'	02°13'03"	22.06'	11.03'



N06°36'43"E  
97.32'

(CONC. MONUMENT TO CONC. MONUMENT)  
N89°13'49"E  
1105.58'

SECTION 31, TOWNSHIP 3 SOUTH,  
RANGE 28 EAST

PSD # 00-027  
CITY DEVELOPMENT # 1546.12  
PREPARED BY:  
**CLARSON AND ASSOCIATES, INC.**  
PROFESSIONAL LAND SURVEYORS  
1643 NALDO AVENUE  
JACKSONVILLE, FLORIDA, 32207  
PHONE: (904)-396-2623 FAX: (904)-396-2633

MATCHLINE  
SEE SHEET 10 OF 10 SHEETS

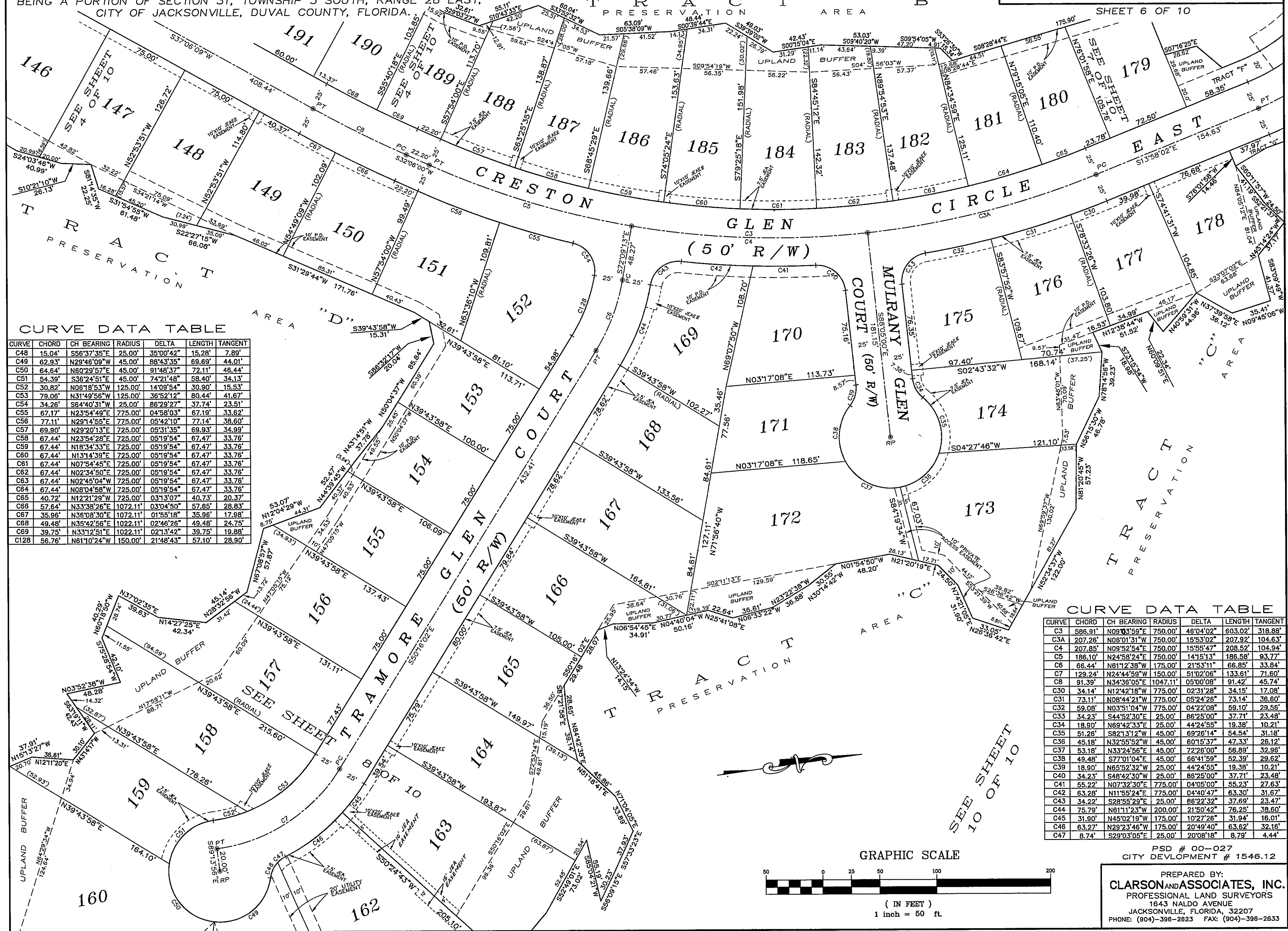
# EAST HAMPTON UNIT FOUR

BEING A PORTION OF SECTION 31, TOWNSHIP 3 SOUTH, RANGE 28 EAST,  
CITY OF JACKSONVILLE, DUVAL COUNTY, FLORIDA.

NOTE: SEE SHEET 2 FOR GENERAL NOTES, LEGEND, AND DETAILS.

PLAT BOOK 53 PAGE 96

SHEET 6 OF 10

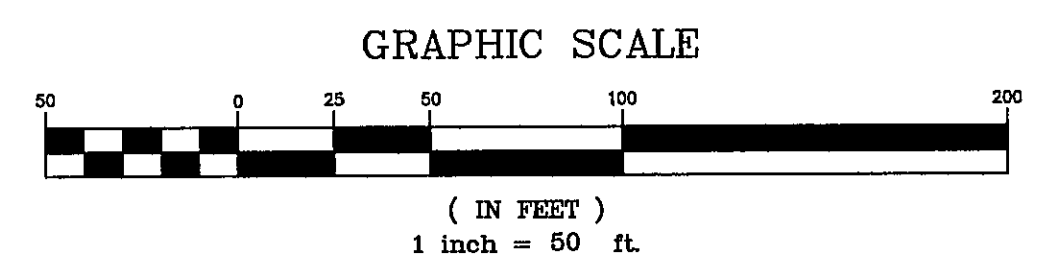


CURVE DATA TABLE

CURVE	CHORD	CH BEARING	RADIUS	DELTA	LENGTH	TANGENT
C48	15.04'	S56°37'35"E	25.00'	35°00'42"	15.28'	7.89'
C49	62.93'	N29°46'09"W	45.00'	88°43'35"	69.69'	44.01'
C50	64.64'	N60°29'57"E	45.00'	91°48'37"	72.11'	46.44'
C51	54.39'	S36°24'51"E	45.00'	74°21'48"	58.40'	34.13'
C52	30.82'	N08°18'53"W	125.00'	14°09'54"	30.90'	15.53'
C53	79.06'	N31°49'56"W	125.00'	36°52'12"	80.44'	41.67'
C54	34.26'	S64°40'31"W	25.00'	86°29'27"	37.74'	23.51'
C55	67.17'	N23°54'49"E	775.00'	04°58'03"	67.19'	33.62'
C56	77.11'	N29°14'55"E	775.00'	05°42'10"	77.14'	38.60'
C57	69.90'	N29°20'13"E	725.00'	05°31'35"	69.93'	34.99'
C58	67.44'	N23°54'28"E	725.00'	05°19'54"	67.47'	33.76'
C59	67.44'	N18°34'33"E	725.00'	05°19'54"	67.47'	33.76'
C60	67.44'	N13°14'39"E	725.00'	05°19'54"	67.47'	33.76'
C61	67.44'	N07°54'45"E	725.00'	05°19'54"	67.47'	33.76'
C62	67.44'	N02°34'50"E	725.00'	05°19'54"	67.47'	33.76'
C63	67.44'	N02°45'04"W	725.00'	05°19'54"	67.47'	33.76'
C64	67.44'	N08°04'58"W	725.00'	05°19'54"	67.47'	33.76'
C65	40.72'	N12°21'29"W	725.00'	03°13'07"	40.73'	20.37'
C66	57.64'	N33°38'26"E	1072.11'	03°04'50"	57.65'	28.83'
C67	35.96'	N36°08'30"E	1072.11'	01°55'18"	35.96'	17.98'
C68	49.48'	N35°42'56"E	1022.11'	02°46'26"	49.48'	24.75'
C69	39.75'	N33°12'51"E	1022.11'	02°13'42"	39.75'	19.88'
C128	56.76'	N61°10'24"W	150.00'	21°48'43"	57.10'	28.90'

CURVE DATA TABLE

CURVE	CHORD	CH BEARING	RADIUS	DELTA	LENGTH	TANGENT
C3	586.91'	N09°03'59"E	750.00'	48°04'02"	603.02'	318.88'
C3A	207.26'	N06°01'31"W	750.00'	15°53'02"	207.92'	104.63'
C4	207.85'	N09°52'54"E	750.00'	15°55'47"	208.52'	104.94'
C5	186.10'	N24°58'24"E	750.00'	14°15'13"	186.58'	93.77'
C6	66.44'	N61°12'38"W	175.00'	21°53'11"	66.85'	33.84'
C7	129.24'	N24°44'59"W	150.00'	51°02'06"	133.61'	71.60'
C8	91.39'	N34°36'05"E	1047.11'	05°00'08"	91.42'	45.74'
C30	34.14'	N12°42'18"W	775.00'	02°31'28"	34.15'	17.08'
C31	73.11'	N08°44'21"W	775.00'	05°24'26"	73.14'	36.60'
C32	59.08'	N03°51'04"W	775.00'	04°22'08"	59.10'	29.56'
C33	34.23'	S44°52'30"E	25.00'	86°25'00"	37.71'	23.48'
C34	18.90'	N69°42'33"E	25.00'	44°24'55"	19.38'	10.21'
C35	51.26'	S82°13'12"W	45.00'	69°26'14"	54.54'	31.18'
C36	45.18'	N32°55'52"W	45.00'	60°15'37"	47.33'	26.12'
C37	53.18'	N33°24'56"E	45.00'	72°26'00"	56.89'	32.96'
C38	49.48'	S77°01'04"E	45.00'	66°41'59"	52.39'	29.62'
C39	18.90'	N65°52'32"W	25.00'	44°24'55"	19.38'	10.21'
C40	34.23'	S48°42'30"W	25.00'	86°25'00"	37.71'	23.48'
C41	55.22'	N07°32'30"E	775.00'	04°05'00"	55.23'	27.63'
C42	63.28'	N11°55'24"E	775.00'	04°40'47"	63.30'	31.67'
C43	34.22'	S28°55'29"E	25.00'	86°22'32"	37.69'	23.47'
C44	75.79'	N61°11'23"W	200.00'	21°50'42"	76.25'	38.60'
C45	31.90'	N45°02'19"W	175.00'	10°27'26"	31.94'	16.01'
C46	63.27'	N29°23'46"W	175.00'	20°49'40"	63.62'	32.16'
C47	8.74'	S29°03'05"E	25.00'	20°08'18"	8.79'	4.44'



PSD # 00-027  
CITY DEVELOPMENT # 1546.12  
PREPARED BY:  
**CLARSON AND ASSOCIATES, INC.**  
PROFESSIONAL LAND SURVEYORS  
1643 NALDO AVENUE  
JACKSONVILLE, FLORIDA, 32207  
PHONE: (904)-396-2823 FAX: (904)-396-2633

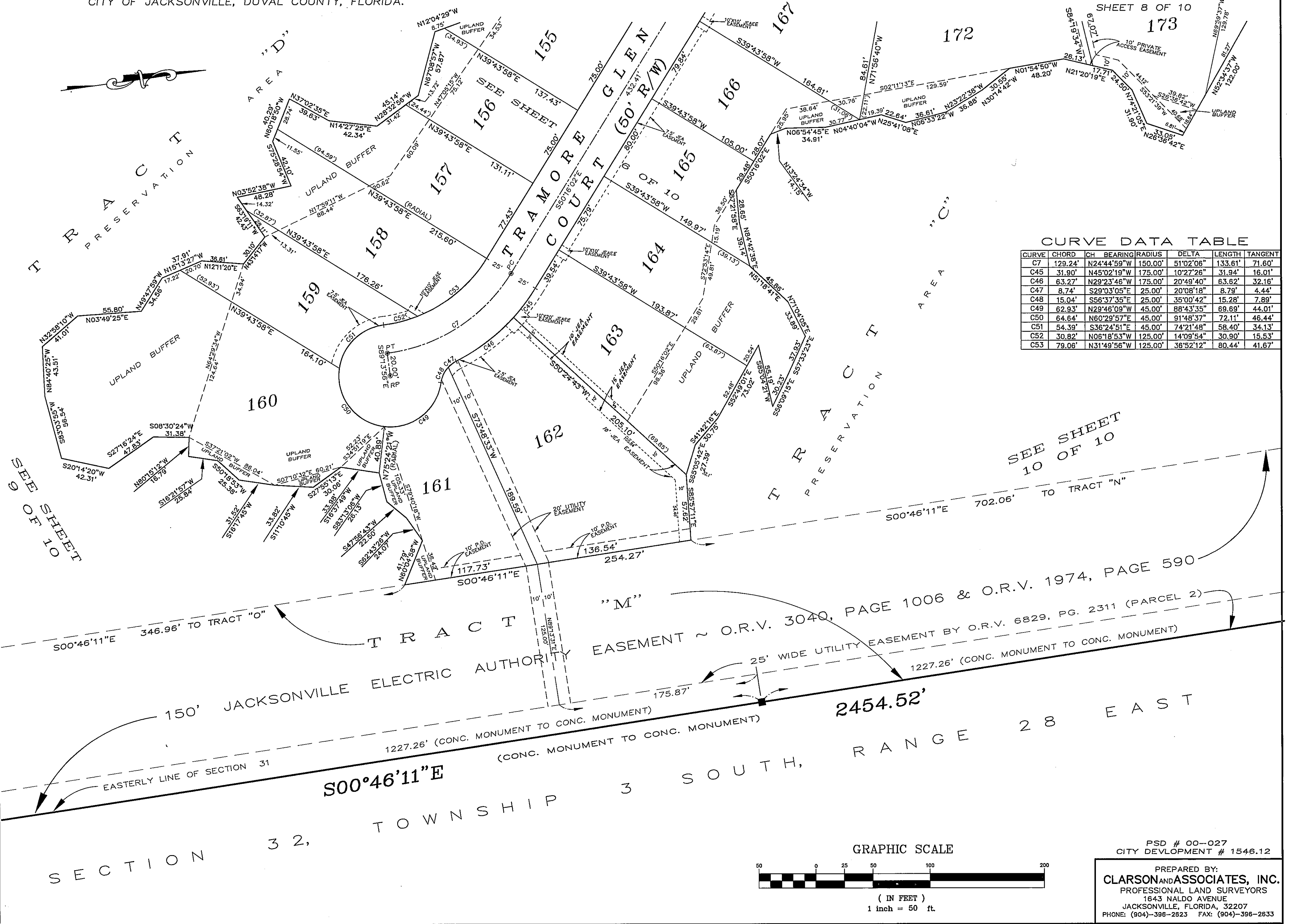
SEE SHEET 10 OF 10

# EAST HAMPTON UNIT FOUR

BEING A PORTION OF SECTION 31, TOWNSHIP 3 SOUTH, RANGE 28 EAST,  
CITY OF JACKSONVILLE, DUVAL COUNTY, FLORIDA.

NOTE: SEE SHEET 2 FOR GENERAL NOTES, LEGEND, AND DETAILS.

PLAT BOOK **53** PAGE **966**



CURVE DATA TABLE

CURVE	CHORD	CH	BEARING	RADIUS	DELTA	LENGTH	TANGENT
C7	129.24'	N24°44'59"W	150.00'	51°02'06"	133.61'	71.60'	
C45	31.90'	N45°02'19"W	175.00'	10°27'26"	31.94'	16.01'	
C46	63.27'	N29°23'46"W	175.00'	20°49'40"	63.62'	32.16'	
C47	8.74'	S29°03'05"E	25.00'	20°08'18"	8.79'	4.44'	
C48	15.04'	S56°37'35"E	25.00'	35°00'42"	15.28'	7.89'	
C49	62.93'	N29°46'09"W	45.00'	88°43'35"	69.69'	44.01'	
C50	64.64'	N60°29'57"E	45.00'	91°48'37"	72.11'	46.44'	
C51	54.39'	S36°24'51"E	45.00'	74°21'48"	58.40'	34.13'	
C52	30.82'	N06°18'53"W	125.00'	14°09'54"	30.90'	15.53'	
C53	79.06'	N31°49'56"W	125.00'	38°52'12"	80.44'	41.67'	

SECTION 32,

TOWNSHIP 3

SOUTH,

RANGE 28

EAST

GRAPHIC SCALE



PSD # 00-027  
CITY DEVELOPMENT # 1546.12  
PREPARED BY:  
**CLARSON AND ASSOCIATES, INC.**  
PROFESSIONAL LAND SURVEYORS  
1643 NALDO AVENUE  
JACKSONVILLE, FLORIDA, 32207  
PHONE: (904)-396-2623 FAX: (904)-396-2633

# EAST HAMPTON UNIT FOUR

BEING A PORTION OF SECTION 31, TOWNSHIP 3 SOUTH, RANGE 28 EAST  
CITY OF JACKSONVILLE, DUVAL COUNTY, FLORIDA.

PLAT BOOK **53** PAGE **96H**

SHEET 9 OF 10

NOTE: SEE SHEET 2 FOR GENERAL NOTES, LEGEND, AND DETAILS.

SECTION 31, TOWNSHIP 3 SOUTH, RANGE 28 EAST

N00°51'52"W 627.42'

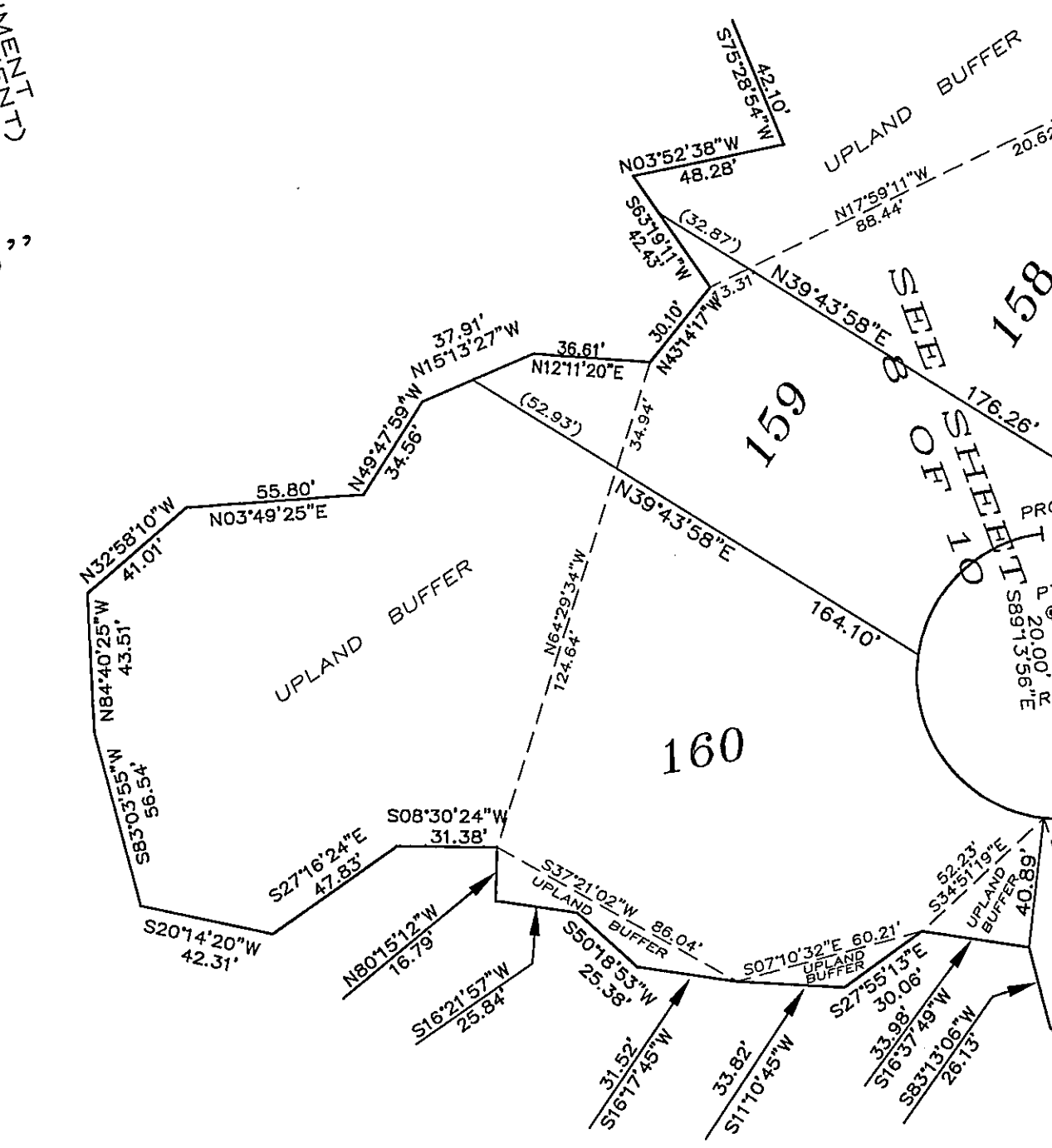
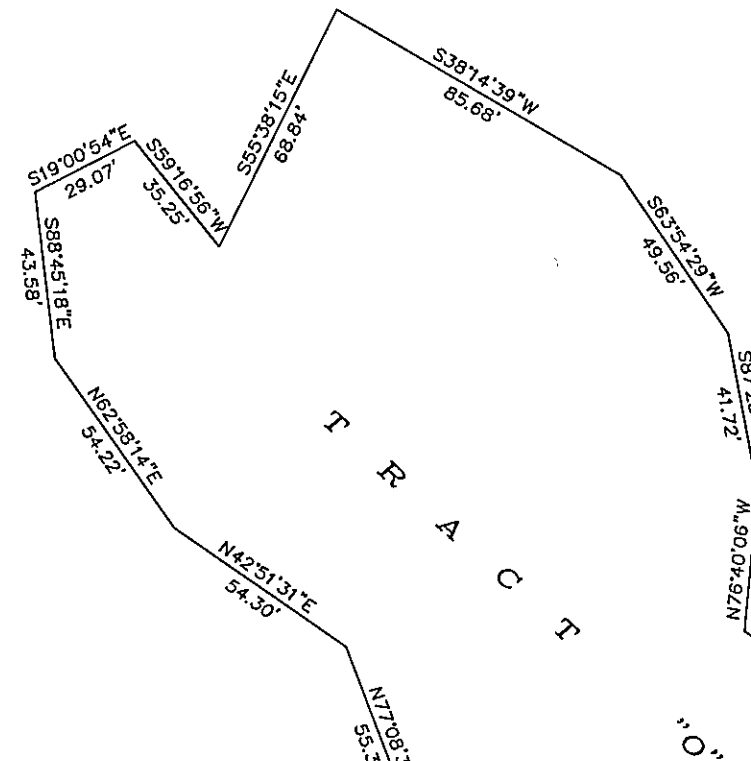
CONC. MONUMENT TO CONC. MONUMENT  
579°53'59"W  
942.14'

J E A  
OFFICIAL RECORDS VOLUME 6658, PAGES 1609 & 1610  
S U B S T A T I O N

S89°06'26"W

549.52'

T R A C T  
P R E S E R V A T I O N



JACKSONVILLE ELECTRIC AUTHORITY EASEMENT ~ O.R.V. 3040, PAGE 1006 & O.R.V. 1974, PAGE 590

25' WIDE UTILITY EASEMENT BY O.R.V. 6829, PG. 2311 (PARCEL 2)

1227.26' (CONC. MONUMENT TO CONC. MONUMENT)

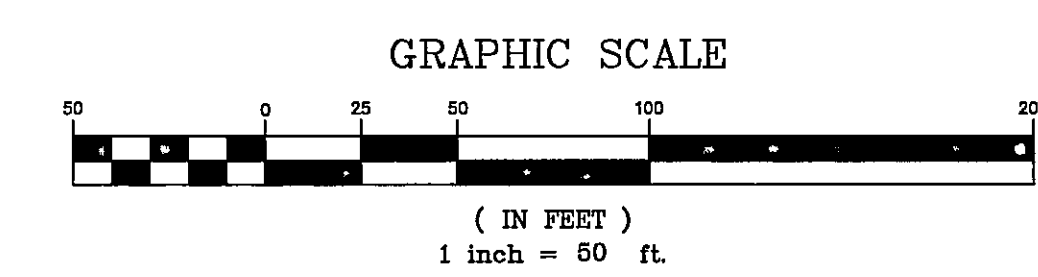
S00°46'11\"/>

2454.52'

SECTION 32,

TOWNSHIP 3 SOUTH,

RANGE 28 EAST



PSD # 00-027  
CITY DEVELOPMENT # 1546.12  
PREPARED BY:  
**CLARSON AND ASSOCIATES, INC.**  
PROFESSIONAL LAND SURVEYORS  
1643 NALDO AVENUE  
JACKSONVILLE, FLORIDA, 32207  
PHONE: (904)-396-2623 FAX: (904)-396-2633

# EAST HAMPTON UNIT FOUR

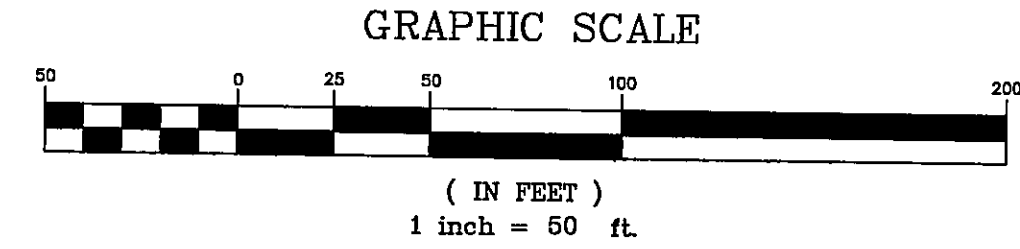
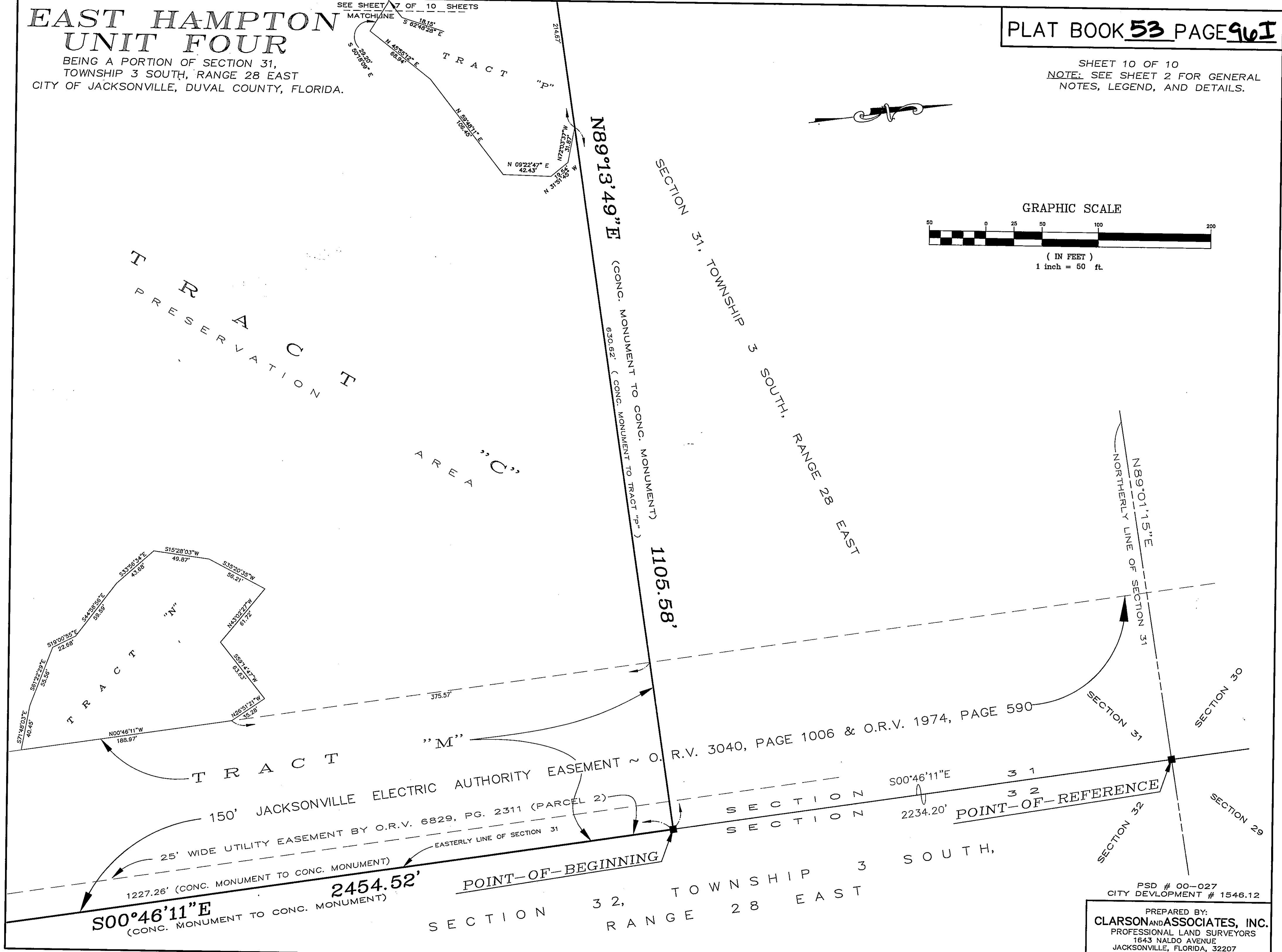
BEING A PORTION OF SECTION 31,  
TOWNSHIP 3 SOUTH, RANGE 28 EAST  
CITY OF JACKSONVILLE, DUVAL COUNTY, FLORIDA.

PLAT BOOK **53** PAGE **96I**

SHEET 10 OF 10  
NOTE: SEE SHEET 2 FOR GENERAL  
NOTES, LEGEND, AND DETAILS.

SEE SHEET 7 OF 10 SHEETS

MATCHLINE



PSD # 00-027  
CITY DEVELOPMENT # 1546.12

PREPARED BY:  
**CLARSON AND ASSOCIATES, INC.**  
PROFESSIONAL LAND SURVEYORS  
1643 NALDO AVENUE  
JACKSONVILLE, FLORIDA, 32207  
PHONE: (904)-396-2623 FAX: (904)-396-2633