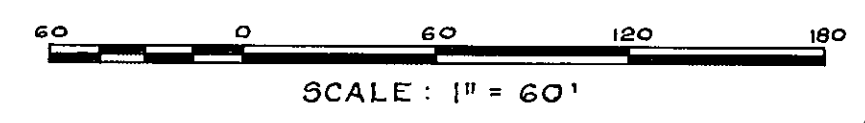


BEING A SUBDIVISION OF A PART OF LOTS 7 AND 8 LAWRENCE POINT, AS RECORDED IN DEED BOOK AB, PAGE 304 OF THE FORMER PUBLIC RECORDS OF DUVAL COUNTY, FLORIDA AND MORE PARTICULARLY DESCRIBED AS COMMENCING AT THE MOST NORTHERLY CORNER OF LOT 4, BLOCK 3 OF ARLINGTON RIVER HILLS, UNIT 2, AS RECORDED IN PLAT BOOK 17, PAGE 12 OF THE CURRENT PUBLIC RECORDS OF DUVAL COUNTY, FLORIDA; THENCE N64°00'E A DISTANCE OF 91 FEET TO A POINT; THENCE S81°30'E A DISTANCE OF 300 FEET TO A POINT; THENCE N8°30'E A DISTANCE OF 10 FEET TO A POINT FOR THE POINT OF BEGINNING OF THIS DESCRIPTION; THENCE S8°30'W A DISTANCE OF 10 FEET TO A POINT; THENCE N81°30'W A DISTANCE OF 300 FEET TO A POINT; THENCE S64°00'W A DISTANCE OF 91 FEET, TO THE MOST NORTHERLY CORNER OF SAID LOT 4, BLOCK 3, OF ARLINGTON RIVER HILLS, UNIT 2, THENCE S26°00'E ALONG THE NORTHEASTERLY BOUNDARY OF SAID ARLINGTON RIVER HILLS, UNIT 2 A DISTANCE OF 472 FEET TO THE MOST NORTHERLY CORNER OF LOT 12, BLOCK 1 OF SAID ARLINGTON RIVER HILLS, UNIT 2; THENCE IN A NORTHEASTERLY AND NORTHERLY DIRECTION ALONG A CURVE TO THE LEFT, HAVING A RADIUS OF 248.24 FEET AN ARC DISTANCE OF 186.59 FEET TO A POINT; THENCE S67°33'E A DISTANCE OF 49.17 FEET TO A POINT; THENCE S26°00'E A DISTANCE OF 148 FEET, MORE OR LESS, TO THE NORTHWESTERLY SHORE OF THE ARLINGTON RIVER; THENCE IN A NORTHEASTERLY DIRECTION ALONG SAID SHORE LINE A DISTANCE OF 568 FEET, MORE OR LESS, TO A POINT THAT BEARS S81°30'E A DISTANCE OF 484 FEET, MORE OR LESS, FROM THE POINT OF BEGINNING; THENCE N81°30'W A DISTANCE OF 484 FEET, MORE OR LESS TO THE POINT OF BEGINNING.



APPROVED
DATE Oct. 7, 1952
BY: A. N. Sallee
COUNTY ENGINEER
Henry Blount
COUNTY ATTORNEY

ADOPTION & DEDICATION
THIS IS TO CERTIFY THAT THE UNDERSIGNED ARE THE LAWFUL OWNERS OF THE LANDS DESCRIBED IN THE CAPTION HEREOF AND THAT THEY HAVE CAUSED THE SAME TO BE SURVEYED AND SUBDIVIDED AND THIS PLAT MADE IN ACCORDANCE WITH SAID SURVEY IS HEREBY ADOPTED AS THE TRUE AND CORRECT PLAT OF SAID LANDS AND ALL STREETS, ROADS & COURTS SHOWN UPON SAID PLAT ARE HEREBY IRREVOCABLY AND WITHOUT RESERVATIONS DEDICATED TO DUVAL COUNTY, FLORIDA AND IT'S SUCCESSORS.
IN WITNESS WHEREOF THESE PRESENTS ARE SIGNED THIS 19TH DAY OF SEPTEMBER A. D. 1952.

SIGNED AND SEALED
IN THE PRESENCE OF
David Haines Jr.
Paul E. Warrant WITNESSES
H. Jay Horne (SEAL)
Annie Lee Horne (SEAL)
HIS WIFE

STATE OF FLORIDA
COUNTY OF DUVAL
I HEREBY CERTIFY THAT ON THIS DAY PERSONALLY APPEARED BEFORE ME AN OFFICER DULY AUTHORIZED TO ADMINISTER OATHS AND TAKE ACKNOWLEDGEMENTS H. FOXWORTH HORNE AND ANNIE LEE HORNE HIS WIFE, TO ME WELL KNOWN TO BE THE PERSONS DESCRIBED IN AND WHO EXECUTED THE FOREGOING DEDICATION AND WHO SEVERALLY ACKNOWLEDGED BEFORE ME THAT THEY EXECUTED THE SAME FREELY AND VOLUNTARILY FOR THE USES AND PURPOSES THEREIN EXPRESSED.

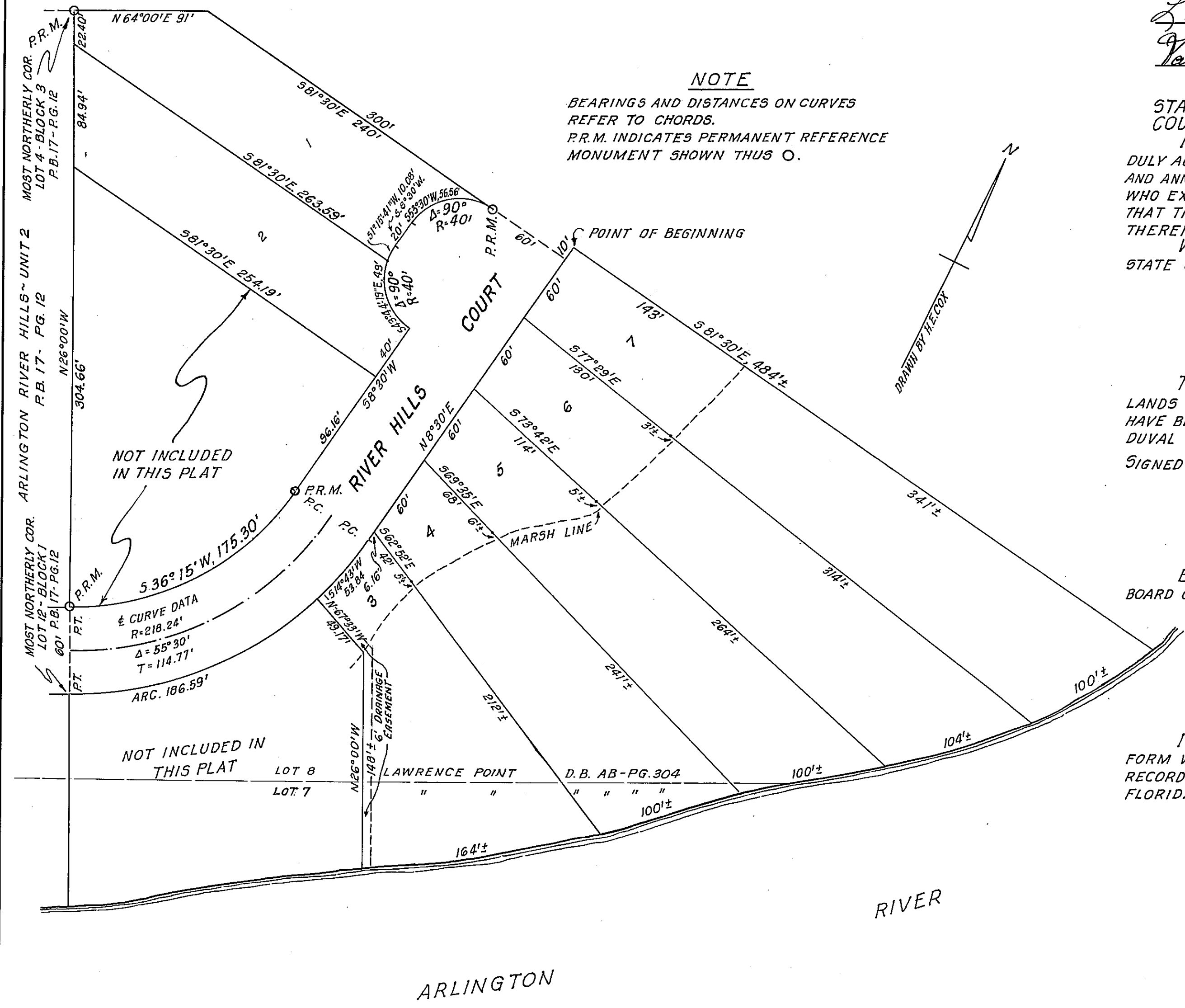
WITNESS MY SIGNATURE AND OFFICIAL SEAL AT JACKSONVILLE IN THE COUNTY OF DUVAL STATE OF FLORIDA, THIS 19TH DAY OF SEPTEMBER A. D. 1952.
W. E. Ladd
NOTARY PUBLIC STATE OF FLORIDA AT LARGE
MY COMMISSION EXPIRES JANUARY 13, 1953.

THIS IS TO CERTIFY THAT THE ABOVE PLAT IS A CORRECT REPRESENTATION OF THE LANDS SURVEYED AND SUBDIVIDED AND DESCRIBED ABOVE, THAT PERMANENT REFERENCE MONUMENTS HAVE BEEN PLACED ACCORDING TO THE LAWS OF THE STATE OF FLORIDA AND THAT ALL THE DUVAL COUNTY ZONING RULES AND REGULATIONS HAVE BEEN COMPLIED WITH.
SIGNED THIS 4TH DAY OF MARCH A. D. 1947 BY S. Coatsell
REGISTERED SURVEYOR
CERTIFICATE NO. 65

EXAMINED AND APPROVED THIS 7TH DAY OF October A. D. 1952 BY THE BOARD OF COUNTY COMMISSIONERS OF DUVAL COUNTY, FLORIDA.
BY J. Hammond
CHAIRMAN
ATTEST Leonard W. Thomas BY Oliver Pullinger
EX-OFFICIO CLERK

I HEREBY CERTIFY THAT THIS PLAT HAS BEEN EXAMINED AND THAT IT COMPLIES IN FORM WITH CHAPTER NO. 10275, LAWS OF FLORIDA OF 1925 AND IS FILED FOR RECORD AND RECORDED IN PLAT BOOK NO. 24 PAGE NO. 2 OF THE PUBLIC RECORDS OF DUVAL COUNTY, FLORIDA, THIS 28TH DAY OF Jan. A. D. 1953

Leonard W. Thomas
CLERK
BY Blount
DEPUTY CLERK



NOTE
BEARINGS AND DISTANCES ON CURVES REFER TO CHORDS.
P.R.M. INDICATES PERMANENT REFERENCE MONUMENT SHOWN THUS O.

NOT INCLUDED IN THIS PLAT

NOT INCLUDED IN THIS PLAT

ε CURVE DATA
R=218.24'
Δ=55°30'
T=114.77'
ARC. 186.59'

