



# EDISON PARCEL 6 - PHASE 1

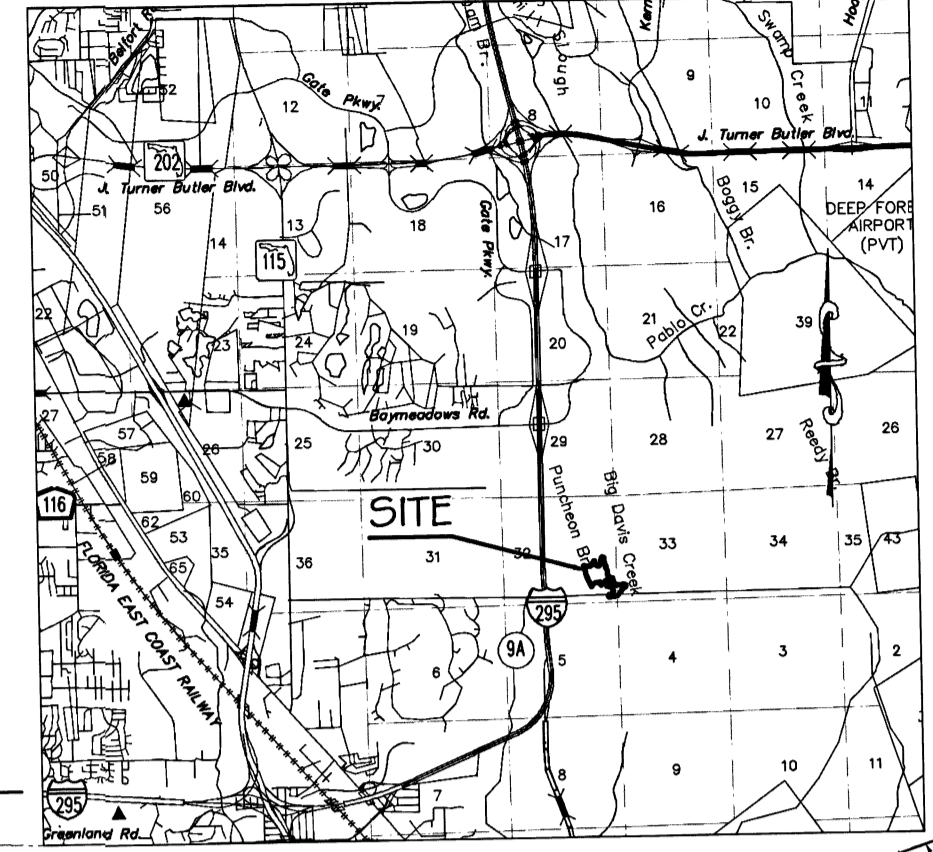
A PORTION OF SECTION 32 AND 33, TOWNSHIP 3 SOUTH, RANGE 28 EAST, CITY OF JACKSONVILLE, DUVAL COUNTY, FLORIDA ALSO BEING A PORTION OF THOSE LANDS DESCRIBED AND RECORDED IN OFFICIAL RECORDS BOOK 800, PAGE 908 OF THE CURRENT PUBLIC RECORDS OF SAID COUNTY.

PLAT BOOK 74 PAGE 72  
SHEET 2 OF 6 SHEETS

## SHEET 3

UN-PLATTED LANDS OF SECTION 32

## VICINITY MAP



## SHEET 5

UN-PLATTED LANDS OF SECTION 33

- LEGEND**
- = SET 1/2" CAPPED IRON ROD L.B. # 6487
  - = SET 4"x4" CONCRETE MONUMENT STAMPED L.B. 6487 UNLESS OTHERWISE NOTED
  - ⊙ = SET NAIL & DISK STAMPED L.B. 6487
  - C1 = TABULATED CURVE DATA
  - = TABULATED LINE DATA
  - F.P. #L = FLORIDA POWER AND LIGHT
  - JEA-E = JACKSONVILLE ELECTRIC AUTHORITY EASEMENT
  - JEA-E.E. = JACKSONVILLE ELECTRIC AUTHORITY EQUIPMENT EASEMENT
  - T.O.B. = TOP OF BANK

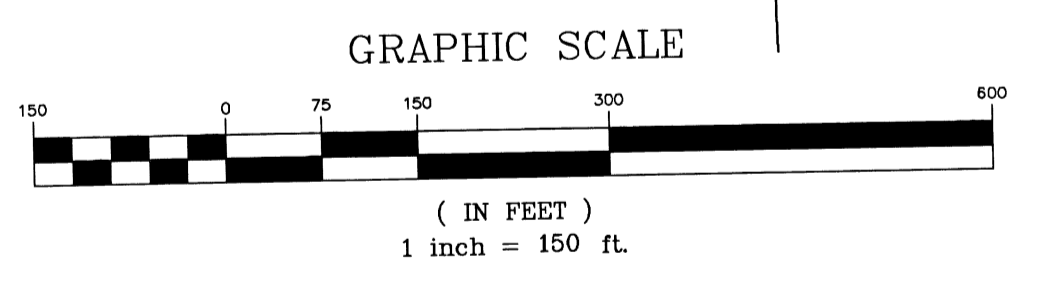
- NOTES:**
1. BEARINGS SHOWN HEREON ARE BASED ON THE EAST LINE OF SECTION 33, BEING SOUTH 00°41'54" EAST, AS SHOWN ON PROVIDED SKETCH BY ROBERT M. ANGAS ASSOCIATES, INC. FILE # 1248-22-006.
  2. NOTICE: THIS PLAT, AS RECORDED IN ITS GRAPHIC FORM, IS THE OFFICIAL DEPICTION OF THE SUBDIVIDED LANDS DESCRIBED HEREIN AND WILL IN NO CIRCUMSTANCES BE SUPPLANTED IN AUTHORITY BY ANY OTHER GRAPHIC OR DIGITAL FORM OF THE PLAT. THERE MAY BE ADDITIONAL RESTRICTIONS AND DISTANCES NOT RECORDED ON THIS PLAT THAT MAY BE FOUND IN THE PUBLIC RECORDS OF THIS COUNTY.
  3. BEARINGS AND DISTANCES SHOWN ON CURVES REFER TO CHORD BEARINGS AND DISTANCES.
  4. THE TABULATED CURVE AND LINE TABLES SHOWN ON EACH SHEET IS APPLICABLE ONLY TO THE CURVES AND LINES THAT APPEAR ON THAT SHEET.
  5. ALL DRAINAGE EASEMENTS ARE UNOBSTRUCTED ACCESS EASEMENTS UNLESS OTHERWISE NOTED HEREON. (SEE NOTE NO. 9)
  6. THE EASEMENTS SHOWN HEREON AND DESIGNATED AS UNOBSTRUCTED ACCESS EASEMENTS SHALL REMAIN TOTALLY UNOBSTRUCTED BY ANY IMPROVEMENTS THAT MAY IMPEDE THE USE AND ACCESS OF SAID EASEMENT BY THE CITY OF JACKSONVILLE.
  7. ALL PLATTED UTILITY EASEMENTS SHALL ALSO BE EASEMENTS FOR THE CONSTRUCTION, INSTALLATION, MAINTENANCE, AND OPERATION OF CABLE TELEVISION SERVICES; PROVIDED HOWEVER, NO SUCH CONSTRUCTION, INSTALLATION, MAINTENANCE, AND OPERATION OF CABLE TELEVISION SERVICES SHALL INTERFERE WITH THE FACILITIES AND SERVICES OF ANY ELECTRIC, TELEPHONE, GAS, OR OTHER PUBLIC UTILITY.
  8. THE EASEMENTS SHOWN HEREON AND DESIGNATED AS UNOBSTRUCTED DRAINAGE EASEMENTS SHALL REMAIN TOTALLY UNOBSTRUCTED BY ANY PERMANENT IMPROVEMENTS WHICH MAY IMPEDE THE USE OF SAID EASEMENT BY THE CITY OF JACKSONVILLE. THE CONSTRUCTION OF DRIVEWAYS AND THE INSTALLATION OF FENCES, HEDGES, AND LANDSCAPING IS PERMISSIBLE BUT SUBJECT TO REMOVAL BY THE CITY AT THE EXPENSE OF EACH LOT OWNER FOR THE REMOVAL AND/OR REPLACEMENT OF SUCH ITEMS.
  9. CERTAIN EASEMENTS ARE RESERVED FOR JEA FOR USE IN CONJUNCTION WITH THE UNDERGROUND ELECTRICAL DISTRIBUTION SYSTEM.
  10. JEA-E DENOTES JEA EASEMENT. THESE EASEMENTS SHALL REMAIN TOTALLY UNOBSTRUCTED BY ANY PERMANENT IMPROVEMENTS WHICH MAY IMPEDE THE USE OF SAID EASEMENT BY JEA. THE CONSTRUCTION OF DRIVEWAYS AND THE INSTALLATION OF FENCES, HEDGES, AND LANDSCAPING IS PERMISSIBLE BUT SUBJECT TO REMOVAL BY JEA AT THE EXPENSE OF EACH LOT OWNER FOR THE REMOVAL AND FOR REPLACEMENT OF SUCH ITEMS.
  11. JEA-E.E. DENOTES JEA EQUIPMENT EASEMENT. THESE EASEMENTS SHALL REMAIN TOTALLY UNOBSTRUCTED BY ANY IMPROVEMENTS THAT MAY IMPEDE THE USE AND ACCESS OF SAID EASEMENT BY JEA.
  12. THE LANDS SHOWN HEREON LIE WITHIN FLOOD ZONES X, AE (30, 1-45.3) PER CLOMR, CASE NUMBER 18-04-7479R AS DEPICTED ON THE FLOOD INSURANCE RATE MAP (FIRM) COMMUNITY NUMBER 120077, PANEL NUMBER 12031C, SUFFIX 0309, DATED 06/30/2014. THE FLOOD ZONE INFORMATION SHOWN ON THIS PLAT IS SCALED OFF OF THE F.I.R.M. F.I.R.M. MAPS AND IS FOR REFERENCE ONLY. THE F.I.R.M. INFORMATION AND DELINEATIONS SHOWN ON THIS PLAT ARE VALID ONLY FOR THE DATES UP TO AND INCLUDING THE DATE OF THIS PLAT. THERE MAY HAVE BEEN SUBSEQUENT REVISIONS TO THIS PLAT THAT WILL SUPERSEDE SAID INFORMATION. INQUIRES SHOULD BE MADE TO THE COMMUNITY'S FLOOD PLANE MANAGEMENT REPOSITORY, DEPARTMENT OF PUBLIC WORKS, DUVAL COUNTY.
  13. THE DECLARATION OF COVENANTS, RESTRICTIONS AND EASEMENTS RECORDED IN OFFICIAL RECORDS BOOK 18372, PAGE 441 AFFECT THIS PLAT AND ARE BLANKET IN NATURE.

**CURVE TABLE**

CP	BEARING	CHORD	RADIUS	LENGTH	DELTA
C200	S17°56'27"E	136.31	70.00	187.70	153°30'01"
C201	S33°40'20"W	354.29	475.00	363.81	43°33'00"
C202	S51°20'25"W	40.50	40.00	52.21	74°46'40"
C203	S63°04'49"W	34.64	40.00	55.83	51°19'04"
C204	S63°04'49"W	34.64	40.00	55.83	51°19'04"
C205	N33°33'14"W	62.79	40.00	72.19	103°23'55"
C206	N54°51'42"E	54.29	40.00	59.66	85°26'39"
C207	N23°40'37"E	370.72	185.00	469.48	143°49'17"
C208	N35°30'57"W	22.32	60.00	22.45	21°26'00"
C209	N16°50'03"E	46.21	730.00	46.22	3°47'04"
C210	N29°01'17"E	35.22	780.00	35.22	3°35'25"
C211	N18°29'20"W	32.01	25.00	34.74	79°36'40"
C212	N49°24'19"W	66.53	280.00	66.60	17°46'42"
C213	N15°01'45"W	719.72	1400.00	727.89	28°47'22"

**LINE TABLE**

LINE TABLE	LINE TABLE				
LF	BEARING	DISTANCE	LF	BEARING	DISTANCE
L200	S72°31'53"E	46.72	L236	S31°11'57"E	45.54
L201	N62°09'11"E	69.90	L237	S59°16'42"E	67.61
L202	S64°19'32"E	46.53	L238	S11°20'33"E	65.03
L203	S63°18'40"E	46.29	L239	S44°02'39"W	33.24
L204	N49°09'07"E	79.54	L240	S04°37'16"E	28.87
L205	N49°09'07"E	79.54	L241	S17°33'49"E	60.62
L206	N17°12'47"E	65.27	L242	S35°56'42"E	51.09
L207	N24°43'25"E	78.49	L243	S24°31'02"E	86.39
L208	N23°04'44"E	134.22	L244	S09°53'46"W	46.60
L209	S50°27'53"E	31.13	L245	S10°21'34"E	59.45
L210	S09°21'00"E	56.22	L246	S13°27'46"W	51.59
L211	S09°31'19"W	65.62	L247	S83°34'33"E	61.80
L212	S56°00'49"E	66.27	L248	S62°41'45"E	40.41
L213	S50°44'57"E	38.47	L249	S19°41'13"W	56.03
L214	S21°54'50"E	41.00	L250	S59°54'14"E	69.00
L215	S67°08'30"E	69.50	L251	S41°25'50"E	51.39
L216	N69°43'44"E	71.07	L252	N69°11'40"E	73.34
L217	N45°33'32"E	92.35	L253	N61°11'04"E	47.93
L218	N42°00'49"W	25.02	L254	S64°11'23"W	8.43
L219	N45°27'15"E	23.30	L255	S00°44'21"W	95.09
L220	N26°51'41"W	47.90	L256	S37°25'17"W	12.81
L221	N37°32'37"E	46.13	L257	N12°01'16"E	20.50
L222	N17°04'12"E	52.80	L258	S65°12'07"W	10.00
L223	N10°37'23"W	56.04	L259	N71°16'25"W	50.00
L224	N15°37'14"E	119.02	L260	N45°37'27"W	10.66
L225	N49°59'37"E	47.72	L261	N36°20'07"W	65.55
L226	S54°34'05"E	51.09	L262	N19°24'56"W	38.86
L227	S64°03'40"E	37.67	L263	N06°26'42"W	41.51
L228	S37°12'20"E	4.74	L264	S78°39'00"W	79.79
L229	S57°30'33"E	20.00	L265	S29°44'37"W	62.28
L230	S37°12'27"E	20.00	L267	S62°11'57"W	63.83
L231	S52°36'33"W	20.00	L268	S61°02'14"W	99.04
L232	S37°12'27"E	4.74	L269	S47°43'49"W	54.93
L233	S03°34'00"W	51.32	L270	S23°49'40"W	40.00
L234	S06°49'02"E	108.74	L271	S34°17'36"W	53.81
L235	S27°52'39"W	53.32	L272	S09°52'19"W	20.00



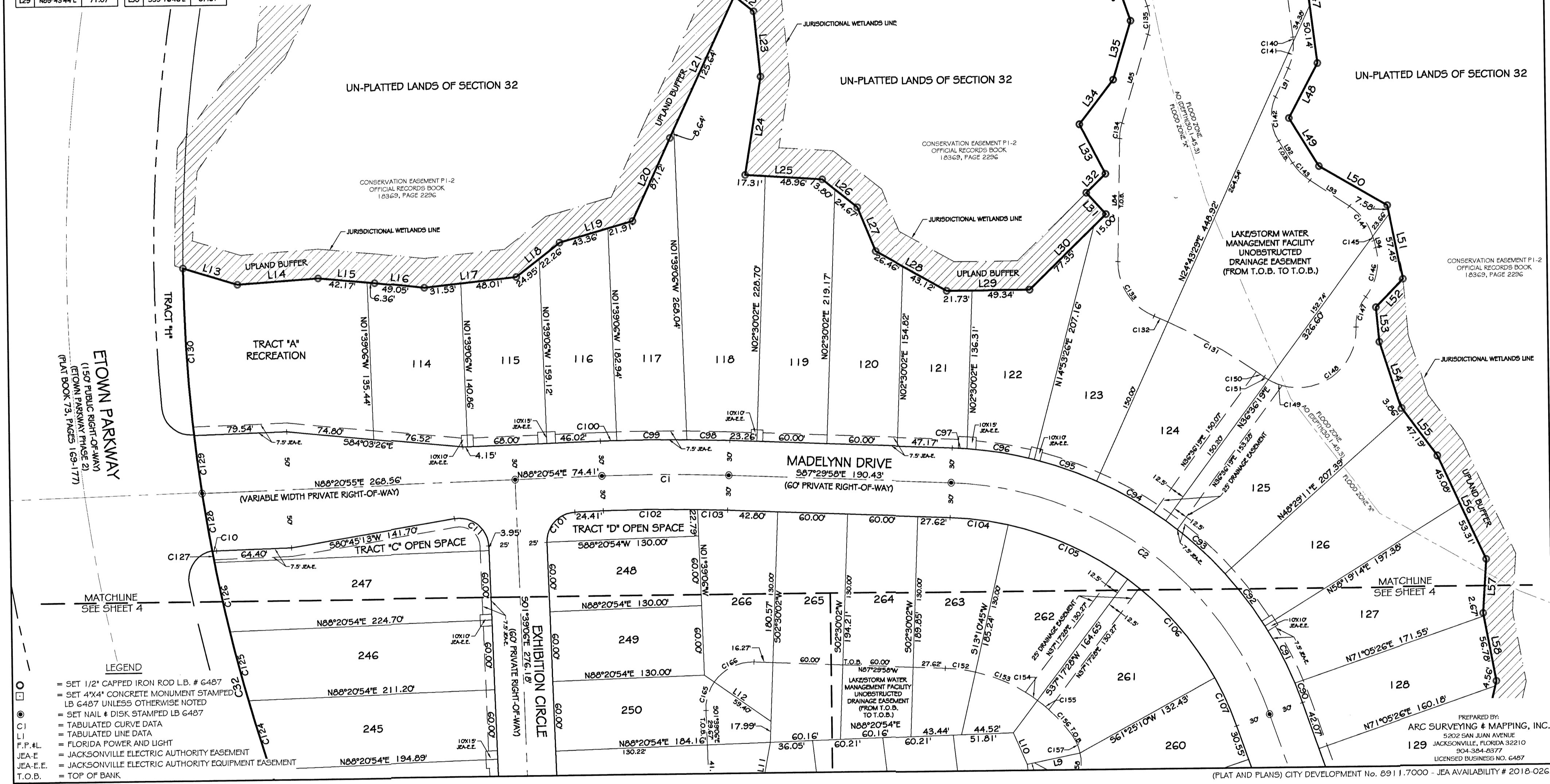
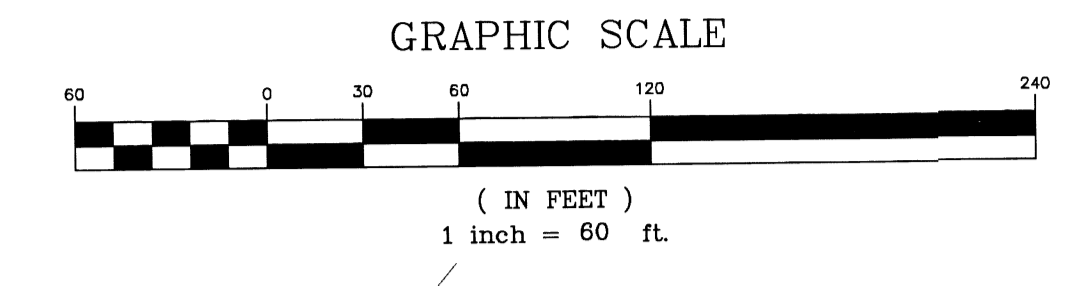
PREPARED BY:  
**ARC SURVEYING & MAPPING, INC.**  
5202 SAN JUAN AVENUE  
JACKSONVILLE, FLORIDA 32210  
904-364-8377  
LICENSED BUSINESS NO. 6487

# EDISON PARCEL 6 - PHASE 1

A PORTION OF SECTION 32 AND 33, TOWNSHIP 3 SOUTH, RANGE 28 EAST, CITY OF JACKSONVILLE, DUVAL COUNTY, FLORIDA ALSO BEING A PORTION OF THOSE LANDS DESCRIBED AND RECORDED IN OFFICIAL RECORDS BOOK 800, PAGE 908 OF THE CURRENT PUBLIC RECORDS OF SAID COUNTY.

LINE TABLE			LINE TABLE			LINE TABLE		
LP	BEARING	DISTANCE	LP	BEARING	DISTANCE	LP	BEARING	DISTANCE
L9	S79°24'24"W	40.00	L30	N45°53'52"E	52.35	L51	S11°03'33"E	65.03
L10	S22°20'45"E	29.62	L31	N42°00'49"W	25.02	L52	S44°09'22"W	33.24
L11	S10°25'59"W	42.19	L32	N45°27'15"E	23.30	L53	S04°37'10"E	29.87
L12	S54°22'30"E	69.60	L33	N26°51'11"W	47.30	L54	S17°33'40"E	60.62
L13	S72°15'53"E	46.72	L34	N37°32'37"E	45.13	L55	S35°56'42"E	51.05
L14	N65°00'11"E	69.50	L35	N17°04'12"E	52.85	L56	S24°31'02"E	96.39
L15	S04°19'32"E	46.53	L36	N10°37'23"W	56.04	L57	S03°53'42"W	46.60
L16	S03°10'40"E	42.69	L37	N15°37'14"E	119.02	L58	S10°21'34"E	59.45
L17	N64°00'07"E	79.54	L38	N49°59'37"E	47.72	L59	N01°28'50"E	106.09
L18	N52°06'30"E	47.21	L39	S54°34'00"E	51.06	L60	N17°04'23"E	79.39
L19	N74°12'47"E	65.27	L40	S64°03'40"E	37.67	L61	N10°37'52"E	35.11
L20	N24°43'26"E	78.49	L41	S57°21'22"E	4.74	L62	N16°09'33"E	36.49
L21	N25°04'44"E	134.28	L42	N52°39'33"E	20.00	L63	S64°03'40"E	20.49
L22	S50°07'55"E	21.13	L43	S37°21'27"E	20.00	L64	S06°09'19"W	11.19
L23	S05°21'00"E	56.29	L44	S62°39'33"W	20.00	L65	S06°40'49"E	51.50
L24	S09°51'19"W	65.82	L45	S57°21'27"E	14.74	L66	S52°39'33"W	20.00
L25	S66°00'49"E	66.27	L46	S03°34'00"W	11.74	L67	S03°34'00"W	11.74
L26	S50°44'57"E	38.47	L47	S06°40'49"E	108.74	L68	S07°52'59"W	53.32
L27	S21°34'50"E	41.00	L48	S07°52'59"W	53.32	L69	S13°53'30"E	6.23
L28	S60°06'30"E	63.58	L49	S31°11'37"E	45.54	L70	S13°53'30"E	6.23
L29	N59°43'44"E	71.07	L50	S59°16'42"E	67.41			

CURVE TABLE					CURVE TABLE					CURVE TABLE							
CP	BEARING	CHORD	RADIUS	LENGTH	DELTA	CP	BEARING	CHORD	RADIUS	LENGTH	DELTA	CP	BEARING	CHORD	RADIUS	LENGTH	DELTA
C1	N89°34'32"W	106.69	1500.00	108.70	470200'	C16	N24°45'33"W	112.79	270.00	113.62	2470043'	C31	N11°27'25"E	23.19	50.00	23.40	204951'
C2	N53°12'14"W	338.07	300.00	358.14	629324'	C17	N42°58'41"W	112.60	270.00	113.70	2470742'	C32	S03°29'44"E	37.92	40.00	39.50	563910'
C3	S39°59'23"W	3.60	25.00	3.60	674257'	C18	N23°44'42"W	45.52	270.00	45.57	940162'	C33	S43°55'35"E	21.14	50.00	21.30	242438'
C4	N50°25'27"W	37.62	25.00	42.58	873291'	C19	S12°51'32"E	62.18	1400.00	62.18	232411'	C34	N37°04'11"W	36.60	50.00	33.27	3070734'
C5	S19°01'45"E	719.72	1400.00	727.89	294732'	C20	S14°19'40"E	61.50	1400.00	61.50	293101'	C35	N19°46'23"W	33.59	50.00	33.06	412704'
C6	S19°01'45"E	719.72	1400.00	727.89	294732'	C21	S11°14'19"E	60.90	1400.00	60.90	292942'	C36	N12°15'55"E	43.50	50.00	43.06	513756'
C7	N26°11'05"W	55.95	330.00	55.62	939222'	C22	S10°22'24"E	9.62	1400.00	9.62	024400'	C37	S10°22'24"E	9.62	50.00	94.46	1001420'
C8	N32°39'49"W	56.97	330.00	56.64	939222'	C23	S09°00'04"E	50.72	1772.89	50.72	130922'	C38	N12°15'55"E	43.50	50.00	43.06	513756'
C9	N47°27'19"W	62.31	330.00	62.48	119251'	C24	S07°04'07"E	50.22	1400.00	50.23	203920'	C39	S60°11'35"E	12.82	50.00	12.89	1448424'
C10	N59°20'06"W	68.30	330.00	68.48	119251'	C25	S03°05'16"E	144.32	1400.00	144.32	554423'	C40	N54°26'33"W	3.50	50.00	3.50	054549'
C11	N47°27'19"W	62.31	330.00	62.48	119251'	C26	N62°04'25"W	56.15	50.00	59.61	103916'	C41	N26°22'03"E	2.29	140.00	4.30	455119'
C12	N62°03'10"W	13.03	400.00	13.03	133316'	C27	N00°46'46"W	29.54	40.00	24.93	354219'	C42	N41°26'21"W	29.39	140.00	30.04	107921'
C13	N62°03'10"W	13.03	400.00	13.03	133316'	C28	S01°16'11"E	24.54	50.00	30.30	344322'	C43	N41°26'21"W	29.39	140.00	30.04	107921'
C14	N62°03'10"W	13.03	400.00	13.03	133316'	C29	S09°59'45"W	60.02	60.03	21453'	C44	N23°25'33"W	16.43	40.00	16.54	294154'	
C15	N62°03'10"W	13.03	400.00	13.03	133316'	C30	S08°59'45"W	13.99	09139'		C45	S15°05'00"E	25.50	40.00	25.95	371028'	
C16	N62°03'10"W	13.03	400.00	13.03	133316'	C31	S02°17'40"E	7.64	50.00	7.65	843401'	C46	S64°00'42"W	38.16	40.00	39.70	563940'
C17	N62°03'10"W	13.03	400.00	13.03	133316'	C32	N04°18'54"W	4.13	50.00	4.13	474349'						



**LEGEND**

- = SET 1/2" CAPPED IRON ROD L.B. # 6487
- = SET 4"x4" CONCRETE MONUMENT STAMPED LB 6487 UNLESS OTHERWISE NOTED
- = SET NAIL & DISK STAMPED LB 6487
- = TABULATED CURVE DATA
- = TABULATED LINE DATA
- F.P. = FLORIDA POWER AND LIGHT
- J.E.A. = JACKSONVILLE ELECTRIC AUTHORITY EASEMENT
- J.E.A.-E. = JACKSONVILLE ELECTRIC AUTHORITY EQUIPMENT EASEMENT
- T.O.B. = TOP OF BANK

PREPARED BY:  
 ARC SURVEYING & MAPPING, INC.  
 5832 SAN JUAN AVENUE  
 JACKSONVILLE, FLORIDA 32210  
 904-584-9377  
 LICENSED BUSINESS NO. 6467

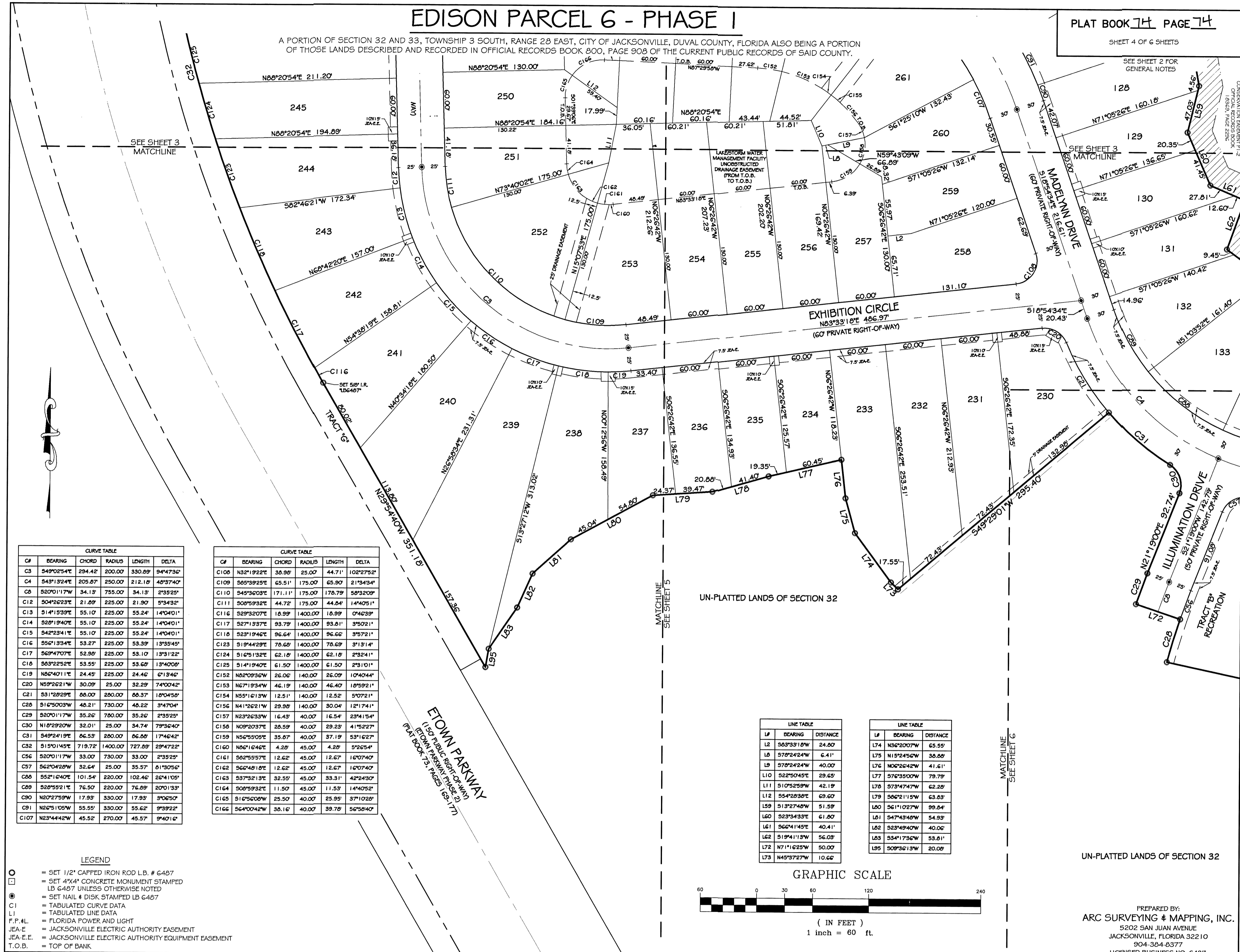
(PLAT AND PLANS) CITY DEVELOPMENT No. 0911.7000 - JEA AVAILABILITY # 2018-0262

# EDISON PARCEL 6 - PHASE 1

A PORTION OF SECTION 32 AND 33, TOWNSHIP 3 SOUTH, RANGE 28 EAST, CITY OF JACKSONVILLE, DUVAL COUNTY, FLORIDA ALSO BEING A PORTION OF THOSE LANDS DESCRIBED AND RECORDED IN OFFICIAL RECORDS BOOK 800, PAGE 908 OF THE CURRENT PUBLIC RECORDS OF SAID COUNTY.

PLAT BOOK 74 PAGE 74

SHEET 4 OF 6 SHEETS



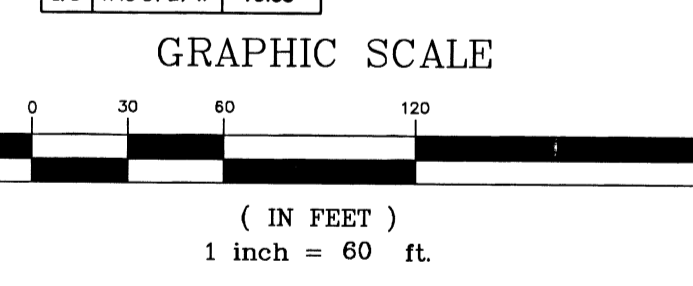
CF	BEARING	CHORD	RADIUS	LENGTH	DELTA
C3	S49°02'54"E	234.42	200.00	330.89	94°47'32"
C4	S43°13'24"E	205.87	250.00	212.16	40°37'40"
C8	S82°01'17"W	34.13	755.00	34.13	2°35'25"
C12	S04°42'23"E	21.89	225.00	21.90	5°34'32"
C13	S14°12'39"E	55.10	225.00	55.24	14°04'01"
C14	S39°19'40"E	55.10	225.00	55.24	14°04'01"
C15	S49°25'41"E	55.10	225.00	55.24	14°04'01"
C16	S61°13'34"E	53.27	225.00	53.39	13°59'45"
C17	S69°47'07"E	52.88	225.00	53.10	13°51'22"
C18	S43°22'52"E	53.55	225.00	53.68	13°40'58"
C19	N65°40'11"E	24.43	225.00	24.42	0°13'42"
C20	N59°26'21"W	30.09	25.00	32.29	7°00'42"
C21	S11°28'29"E	66.00	280.00	66.37	1°04'58"
C22	S16°50'03"W	48.21	780.00	48.22	3°47'04"
C29	S82°01'17"W	35.26	780.00	35.26	2°35'25"
C30	N12°29'20"W	32.01	25.00	34.74	79°36'40"
C31	S49°24'19"E	66.53	280.00	66.80	1°46'42"
C32	S15°01'45"E	719.72	1400.00	727.89	29°47'22"
C35	S82°01'17"W	33.00	780.00	33.00	2°35'25"
C57	S62°04'28"W	32.64	25.00	35.57	61°30'56"
C68	S52°16'40"E	101.54	280.00	102.46	26°41'09"
C69	S82°52'11"E	76.50	280.00	76.89	20°10'33"
C80	N82°27'59"W	17.93	330.00	17.93	3°06'50"
C81	N85°11'05"W	55.55	330.00	55.62	9°39'22"
C107	N23°44'42"W	45.52	270.00	45.57	9°40'10"

CF	BEARING	CHORD	RADIUS	LENGTH	DELTA
C108	N32°19'22"E	30.90	25.00	44.71	102°27'52"
C109	S65°39'23"E	65.51	175.00	65.90	21°54'34"
C110	S43°36'03"E	171.11	175.00	176.79	59°32'09"
C111	S05°59'32"E	44.72	175.00	44.84	14°40'51"
C116	S29°52'07"E	18.99	1400.00	18.99	0°46'39"
C117	S27°19'37"E	93.79	1400.00	93.81	3°50'21"
C118	S23°19'46"E	96.64	1400.00	96.66	3°57'21"
C123	S19°44'29"E	78.60	1400.00	78.69	3°13'14"
C124	S16°51'32"E	62.10	1400.00	62.18	2°32'41"
C125	S14°19'40"E	61.50	1400.00	61.50	2°31'01"
C132	N60°59'39"W	26.06	140.00	26.09	10°40'44"
C133	N67°18'34"W	42.19	140.00	42.40	18°59'21"
C154	N55°16'13"W	12.51	140.00	12.52	5°07'21"
C156	N41°32'31"W	29.28	140.00	30.04	12°17'41"
C157	N39°23'23"W	16.43	40.00	16.54	23°41'54"
C158	N39°23'23"W	28.59	40.00	28.23	41°52'27"
C159	N56°59'57"E	35.67	40.00	37.19	33°16'27"
C160	N45°16'42"E	4.28	45.00	4.28	5°26'54"
C161	S65°59'57"E	12.62	45.00	12.67	16°07'40"
C162	S66°48'18"E	12.62	45.00	12.67	16°07'40"
C163	S57°32'13"E	32.55	45.00	33.31	42°24'30"
C164	S09°59'32"E	11.50	45.00	11.53	14°40'52"
C165	S16°56'00"W	25.50	40.00	25.95	37°10'28"
C166	S64°00'42"W	38.16	40.00	39.78	56°58'40"

**LEGEND**

- = SET 1/2" CAPPED IRON ROD LB. # 6407
- = SET 4"x4" CONCRETE MONUMENT STAMPED LB. # 6407 UNLESS OTHERWISE NOTED
- ⊙ = SET NAIL & DISK STAMPED LB. # 6407
- ⊕ = TABULATED CURVE DATA
- L1 = TABULATED LINE DATA
- F.P.H.L. = FLORIDA POWER AND LIGHT
- JEA.E. = JACKSONVILLE ELECTRIC AUTHORITY EASEMENT
- JEA.E.E. = JACKSONVILLE ELECTRIC AUTHORITY EQUIPMENT EASEMENT
- T.O.B. = TOP OF BANK

LINE	BEARING	DISTANCE
L1	S63°33'10"W	24.00
L2	S70°24'24"W	6.41
L3	S70°24'24"W	40.00
L10	S22°50'45"E	29.65
L11	S10°52'59"W	42.19
L12	S54°28'30"E	69.60
L13	S13°27'40"W	51.59
L61	S23°34'33"E	61.00
L61	S66°41'40"E	40.41
L62	S19°41'13"W	56.03
L72	N11°16'25"W	50.00
L73	N45°57'27"W	10.66

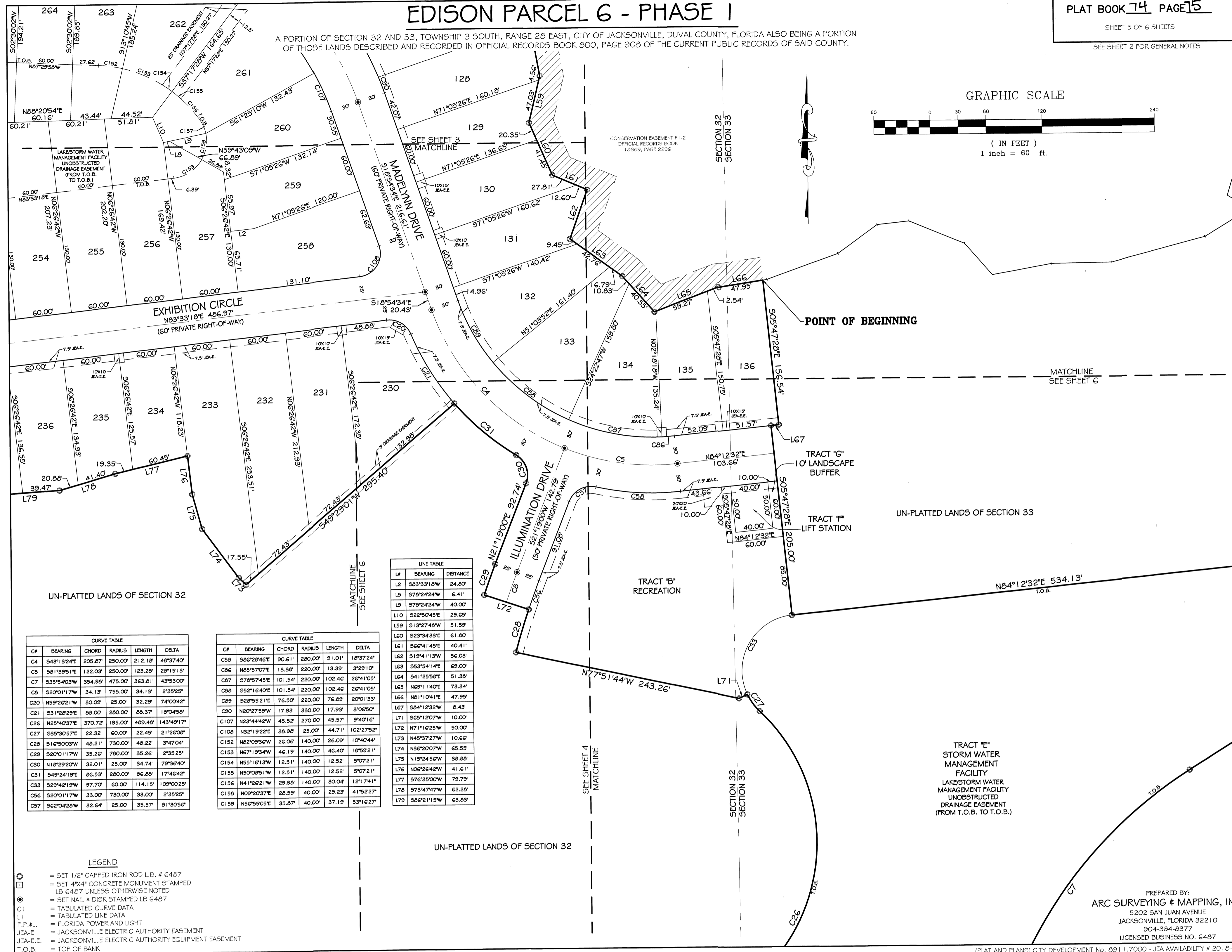


UN-PLATTED LANDS OF SECTION 32

PREPARED BY:  
**ARC SURVEYING & MAPPING, INC.**  
 5202 SAN JUAN AVENUE  
 JACKSONVILLE, FLORIDA 32210  
 904-364-8377  
 LICENSED BUSINESS NO. 6407

(PLAT AND PLANS) CITY DEVELOPMENT No. 8911.7000 - JEA AVAILABILITY # 2018-0262

# EDISON PARCEL 6 - PHASE I



CP	BEARING	CHORD	RADIUS	LENGTH	DELTA
C4	S43°13'24"E	205.87	250.00	212.19	48°37'40"
C5	S61°39'51"E	1122.03	250.00	123.28	281°51'31"
C7	S39°54'00"W	354.98	475.00	363.81	43°53'00"
C8	S20°01'17"W	34.13	755.00	34.13	2°35'25"
C10	N59°26'21"W	30.09	25.00	32.29	74°00'42"
C11	S31°25'23"E	68.07	200.00	60.37	18°04'58"
C16	N25°40'37"E	370.72	195.00	489.48	143°49'17"
C17	S35°30'57"E	22.32	60.00	22.45	21°26'00"
C18	S15°00'03"W	45.21	730.00	40.22	3°47'04"
C19	S20°01'17"W	35.82	700.00	35.26	2°35'25"
C20	N18°29'20"W	32.01	25.00	34.74	79°36'40"
C21	S49°24'19"E	66.53	200.00	66.88	17°46'42"
C33	S29°42'19"W	97.70	60.00	114.15	109°00'25"
C56	S20°01'17"W	33.00	730.00	33.00	2°35'25"
C57	S62°04'28"W	32.64	25.00	35.57	61°30'56"

CP	BEARING	CHORD	RADIUS	LENGTH	DELTA
C10	N32°19'22"E	36.90	25.00	44.71	102°27'52"
C12	N82°09'36"W	26.00	140.00	26.09	10°40'44"
C13	N67°19'34"W	46.19	140.00	46.40	10°59'21"
C14	N55°16'13"W	12.51	140.00	12.52	9°07'21"
C15	N50°06'21"W	12.51	140.00	12.52	9°07'21"
C16	N41°26'21"W	28.89	140.00	30.04	12°17'41"
C18	N09°20'37"E	28.59	40.00	29.23	41°52'27"
C19	N56°58'05"E	35.67	40.00	37.19	53°16'27"

LINE	BEARING	DISTANCE
L1	S53°33'16"W	24.80
L2	S78°24'24"W	6.41
L3	S78°24'24"W	40.00
L4	S41°25'50"E	51.38
L5	N69°11'40"E	73.34
L6	N81°10'41"E	47.95
L7	S64°12'32"W	6.43
L8	S65°12'07"W	10.00
L9	N71°16'25"W	50.00
L10	N22°50'45"E	29.65
L11	S13°27'49"W	51.59
L12	S23°54'33"E	61.80
L13	S66°41'45"E	40.41
L14	S19°41'13"W	56.03
L15	S53°54'14"E	69.00
L16	S41°25'50"E	51.38
L17	N69°11'40"E	73.34
L18	N81°10'41"E	47.95
L19	S64°12'32"W	6.43
L20	S65°12'07"W	10.00
L21	N71°16'25"W	50.00
L22	N22°50'45"E	29.65
L23	S13°27'49"W	51.59
L24	S23°54'33"E	61.80
L25	S66°41'45"E	40.41
L26	S19°41'13"W	56.03
L27	S53°54'14"E	69.00
L28	S41°25'50"E	51.38
L29	N69°11'40"E	73.34
L30	N81°10'41"E	47.95
L31	S64°12'32"W	6.43
L32	S65°12'07"W	10.00
L33	N71°16'25"W	50.00
L34	N22°50'45"E	29.65
L35	S13°27'49"W	51.59
L36	S23°54'33"E	61.80
L37	S66°41'45"E	40.41
L38	S19°41'13"W	56.03
L39	S53°54'14"E	69.00
L40	S41°25'50"E	51.38
L41	N69°11'40"E	73.34
L42	N81°10'41"E	47.95
L43	S64°12'32"W	6.43
L44	S65°12'07"W	10.00
L45	N71°16'25"W	50.00
L46	N22°50'45"E	29.65
L47	S13°27'49"W	51.59
L48	S23°54'33"E	61.80
L49	S66°41'45"E	40.41
L50	S19°41'13"W	56.03
L51	S53°54'14"E	69.00
L52	S41°25'50"E	51.38
L53	N69°11'40"E	73.34
L54	N81°10'41"E	47.95
L55	S64°12'32"W	6.43
L56	S65°12'07"W	10.00
L57	N71°16'25"W	50.00
L58	N22°50'45"E	29.65
L59	S13°27'49"W	51.59
L60	S23°54'33"E	61.80
L61	S66°41'45"E	40.41
L62	S19°41'13"W	56.03
L63	S53°54'14"E	69.00
L64	S41°25'50"E	51.38
L65	N69°11'40"E	73.34
L66	N81°10'41"E	47.95
L67	S64°12'32"W	6.43
L68	S65°12'07"W	10.00
L69	N71°16'25"W	50.00
L70	N22°50'45"E	29.65
L71	S13°27'49"W	51.59
L72	S23°54'33"E	61.80
L73	S66°41'45"E	40.41
L74	S19°41'13"W	56.03
L75	S53°54'14"E	69.00
L76	S41°25'50"E	51.38
L77	N69°11'40"E	73.34
L78	N81°10'41"E	47.95
L79	S64°12'32"W	6.43
L80	S65°12'07"W	10.00
L81	N71°16'25"W	50.00
L82	N22°50'45"E	29.65
L83	S13°27'49"W	51.59
L84	S23°54'33"E	61.80
L85	S66°41'45"E	40.41
L86	S19°41'13"W	56.03
L87	S53°54'14"E	69.00
L88	S41°25'50"E	51.38
L89	N69°11'40"E	73.34
L90	N81°10'41"E	47.95
L91	S64°12'32"W	6.43
L92	S65°12'07"W	10.00
L93	N71°16'25"W	50.00
L94	N22°50'45"E	29.65
L95	S13°27'49"W	51.59
L96	S23°54'33"E	61.80
L97	S66°41'45"E	40.41
L98	S19°41'13"W	56.03
L99	S53°54'14"E	69.00
L100	S41°25'50"E	51.38
L101	N69°11'40"E	73.34
L102	N81°10'41"E	47.95
L103	S64°12'32"W	6.43
L104	S65°12'07"W	10.00
L105	N71°16'25"W	50.00
L106	N22°50'45"E	29.65
L107	S13°27'49"W	51.59
L108	S23°54'33"E	61.80
L109	S66°41'45"E	40.41
L110	S19°41'13"W	56.03
L111	S53°54'14"E	69.00
L112	S41°25'50"E	51.38
L113	N69°11'40"E	73.34
L114	N81°10'41"E	47.95
L115	S64°12'32"W	6.43
L116	S65°12'07"W	10.00
L117	N71°16'25"W	50.00
L118	N22°50'45"E	29.65
L119	S13°27'49"W	51.59
L120	S23°54'33"E	61.80
L121	S66°41'45"E	40.41
L122	S19°41'13"W	56.03
L123	S53°54'14"E	69.00
L124	S41°25'50"E	51.38
L125	N69°11'40"E	73.34
L126	N81°10'41"E	47.95
L127	S64°12'32"W	6.43
L128	S65°12'07"W	10.00
L129	N71°16'25"W	50.00
L130	N22°50'45"E	29.65
L131	S13°27'49"W	51.59
L132	S23°54'33"E	61.80
L133	S66°41'45"E	40.41
L134	S19°41'13"W	56.03
L135	S53°54'14"E	69.00
L136	S41°25'50"E	51.38
L137	N69°11'40"E	73.34
L138	N81°10'41"E	47.95
L139	S64°12'32"W	6.43
L140	S65°12'07"W	10.00
L141	N71°16'25"W	50.00
L142	N22°50'45"E	29.65
L143	S13°27'49"W	51.59
L144	S23°54'33"E	61.80
L145	S66°41'45"E	40.41
L146	S19°41'13"W	56.03
L147	S53°54'14"E	69.00
L148	S41°25'50"E	51.38
L149	N69°11'40"E	73.34
L150	N81°10'41"E	47.95
L151	S64°12'32"W	6.43
L152	S65°12'07"W	10.00
L153	N71°16'25"W	50.00
L154	N22°50'45"E	29.65
L155	S13°27'49"W	51.59
L156	S23°54'33"E	61.80
L157	S66°41'45"E	40.41
L158	S19°41'13"W	56.03
L159	S53°54'14"E	69.00
L160	S41°25'50"E	51.38
L161	N69°11'40"E	73.34
L162	N81°10'41"E	47.95
L163	S64°12'32"W	6.43
L164	S65°12'07"W	10.00
L165	N71°16'25"W	50.00
L166	N22°50'45"E	29.65
L167	S13°27'49"W	51.59
L168	S23°54'33"E	61.80
L169	S66°41'45"E	40.41
L170	S19°41'13"W	56.03
L171	S53°54'14"E	69.00
L172	S41°25'50"E	51.38
L173	N69°11'40"E	73.34
L174	N81°10'41"E	47.95
L175	S64°12'32"W	6.43
L176	S65°12'07"W	10.00
L177	N71°16'25"W	50.00
L178	N22°50'45"E	29.65
L179	S13°27'49"W	51.59
L180	S23°54'33"E	61.80
L181	S66°41'45"E	40.41
L182	S19°41'13"W	56.03
L183	S53°54'14"E	69.00
L184	S41°25'50"E	51.38
L185	N69°11'40"E	73.34
L186	N81°10'41"E	47.95
L187	S64°12'32"W	6.43
L188	S65°12'07"W	10.00
L189	N71°16'25"W	50.00
L190	N22°50'45"E	29.65
L191	S13°27'49"W	51.59
L192	S23°54'33"E	61.80
L193	S66°41'45"E	40.41
L194	S19°41'13"W	56.03
L195	S53°54'14"E	69.00
L196	S41°25'50"E	51.38
L197	N69°11'40"E	73.34
L198	N81°10'41"E	47.95
L199	S64°12'32"W	6.43
L200	S65°12'07"W	10.00

- LEGEND**
- = SET 1/2" CAPPED IRON ROD L.B. # 6487
  - = SET 4"x4" CONCRETE MONUMENT STAMPED LB 6487 UNLESS OTHERWISE NOTED
  - ⊙ = SET NAIL & DISK STAMPED LB 6487
  - C.I. = TABULATED CURVE DATA
  - L.I. = TABULATED LINE DATA
  - F.P.&L. = FLORIDA POWER AND LIGHT
  - JEA-E. = JACKSONVILLE ELECTRIC AUTHORITY EASEMENT
  - JEA-E.E. = JACKSONVILLE ELECTRIC AUTHORITY EQUIPMENT EASEMENT
  - T.O.B. = TOP OF BANK

TRACT 'E'  
STORM WATER  
MANAGEMENT  
FACILITY  
LAKE/STORM WATER  
MANAGEMENT FACILITY  
UNOBSTRUCTED  
DRAINAGE EASEMENT  
(FROM T.O.B. TO T.O.B.)

PREPARED BY:  
**ARC SURVEYING & MAPPING, INC.**  
5202 SAN JUAN AVENUE  
JACKSONVILLE, FLORIDA 32210  
904-364-6377  
LICENSED BUSINESS NO. 6487

(PLAT AND PLANS) CITY DEVELOPMENT No. 8911.7000 - JEA AVAILABILITY # 2018-0262

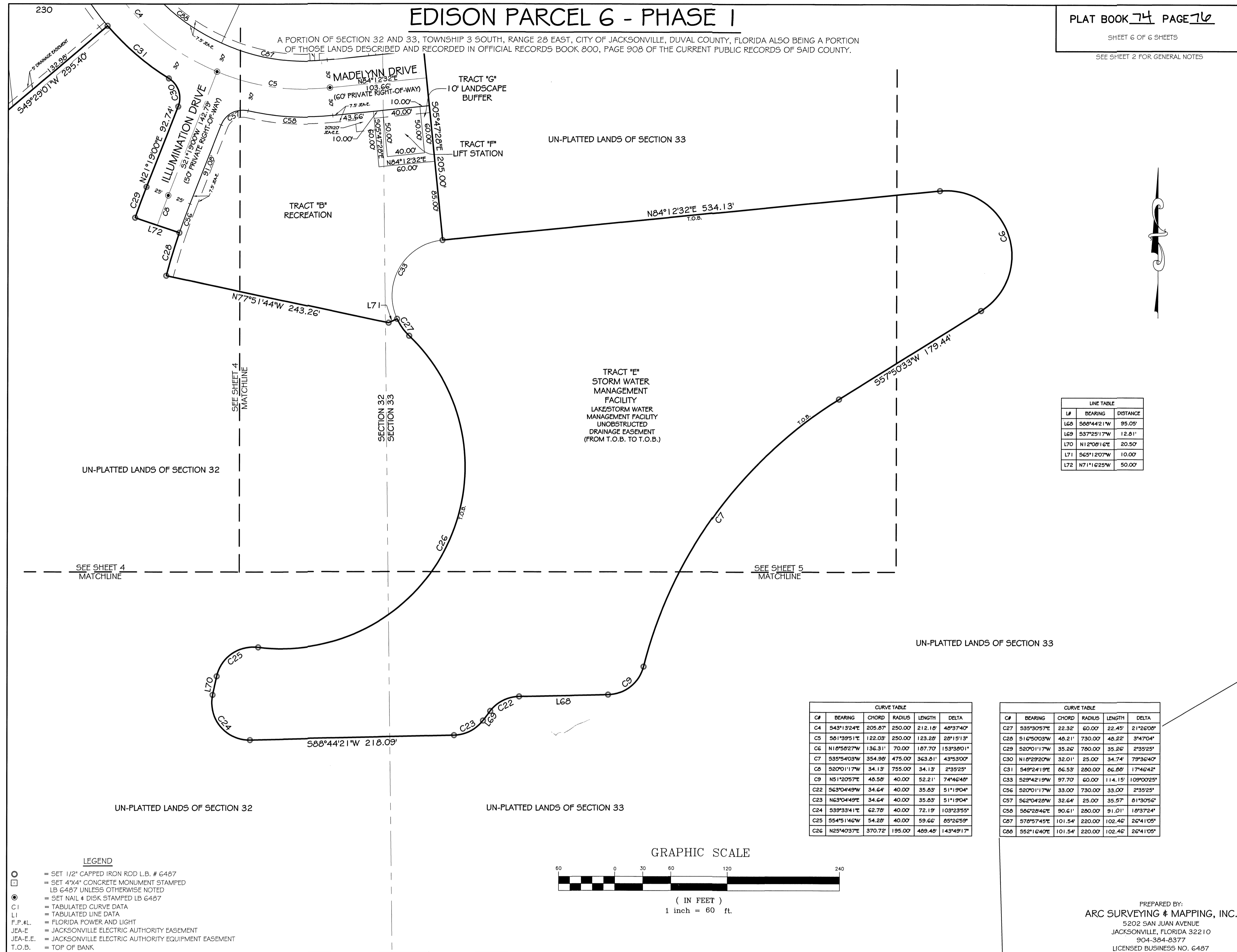
# EDISON PARCEL 6 - PHASE 1

A PORTION OF SECTION 32 AND 33, TOWNSHIP 3 SOUTH, RANGE 28 EAST, CITY OF JACKSONVILLE, DUVAL COUNTY, FLORIDA ALSO BEING A PORTION OF THOSE LANDS DESCRIBED AND RECORDED IN OFFICIAL RECORDS BOOK 800, PAGE 908 OF THE CURRENT PUBLIC RECORDS OF SAID COUNTY.

PLAT BOOK 74 PAGE 76

SHEET 6 OF 6 SHEETS

SEE SHEET 2 FOR GENERAL NOTES

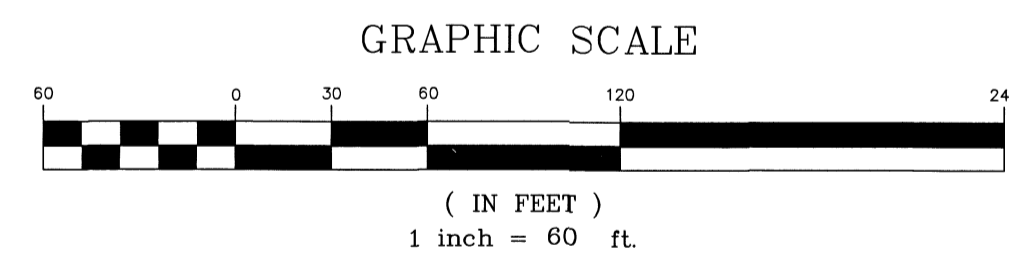


LP	BEARING	DISTANCE
L69	S68°44'21"W	35.09'
L69	S37°29'17"W	12.81'
L70	N1°20'51"E	20.59'
L71	S65°1'20"W	10.00'
L72	N7°11'6"25"W	50.00'

CF	BEARING	CHORD	RADIUS	LENGTH	DELTA
C4	S43°1'32.4"E	205.67'	250.00'	212.10'	40°37'40"
C5	S61°39'51"E	122.03'	250.00'	123.28'	29°1'51.3"
C6	N10°58'27"W	136.31'	70.00'	167.70'	153°30'01"
C7	S35°40'33"W	354.90'	475.00'	363.81'	43°5'30"
C8	S20°01'17"W	34.13'	755.00'	34.13'	2°35'25"
C9	N51°20'57"E	40.58'	40.00'	52.21'	74°46'40"
C22	S63°04'49"E	34.64'	40.00'	35.83'	51°1'804"
C23	N63°04'49"E	34.64'	40.00'	35.83'	51°1'804"
C24	S39°33'41"E	62.78'	40.00'	72.19'	103°2'359"
C25	S54°51'46"W	54.28'	40.00'	59.62'	65°2'639"
C26	N25°40'37"E	370.72'	195.00'	488.48'	143°49'17"

CF	BEARING	CHORD	RADIUS	LENGTH	DELTA
C27	S35°30'57"E	22.32'	60.00'	22.45'	21°52'00"
C28	S16°50'03"W	46.21'	730.00'	46.22'	3°47'04"
C29	S20°01'17"W	35.52'	760.00'	35.62'	2°35'25"
C30	N10°29'20"W	32.01'	25.00'	34.74'	79°36'40"
C31	S49°24'19"E	66.53'	280.00'	66.68'	17°46'42"
C33	S29°42'19"W	97.70'	60.00'	114.15'	109°00'25"
C36	S20°01'17"W	33.00'	730.00'	33.00'	2°35'25"
C37	S62°04'20"W	32.64'	25.00'	35.57'	81°30'56"
C38	S62°28'46"E	90.61'	280.00'	91.01'	10°37'24"
C87	S78°57'45"E	101.54'	220.00'	102.46'	26°41'05"
C88	S52°16'40"E	101.54'	220.00'	102.46'	26°41'05"

- LEGEND**
- = SET 1/2" CAPPED IRON ROD L.B. # 6487
  - = SET 4"x4" CONCRETE MONUMENT STAMPED L.B. 6487 UNLESS OTHERWISE NOTED
  - ⊙ = SET NAIL 4 DISK STAMPED L.B. 6487
  - = TABULATED CURVE DATA
  - LI = TABULATED LINE DATA
  - F.P.A.L. = FLORIDA POWER AND LIGHT
  - JEA-E = JACKSONVILLE ELECTRIC AUTHORITY EASEMENT
  - JEA-E.E. = JACKSONVILLE ELECTRIC AUTHORITY EQUIPMENT EASEMENT
  - T.O.B. = TOP OF BANK



PREPARED BY:  
**ARC SURVEYING & MAPPING, INC.**  
 5202 SAN JUAN AVENUE  
 JACKSONVILLE, FLORIDA 32210  
 904-384-8377  
 LICENSED BUSINESS NO. 6487

(PLAT AND PLANS) CITY DEVELOPMENT No. 0911.7000 - JEA AVAILABILITY # 2018-0262