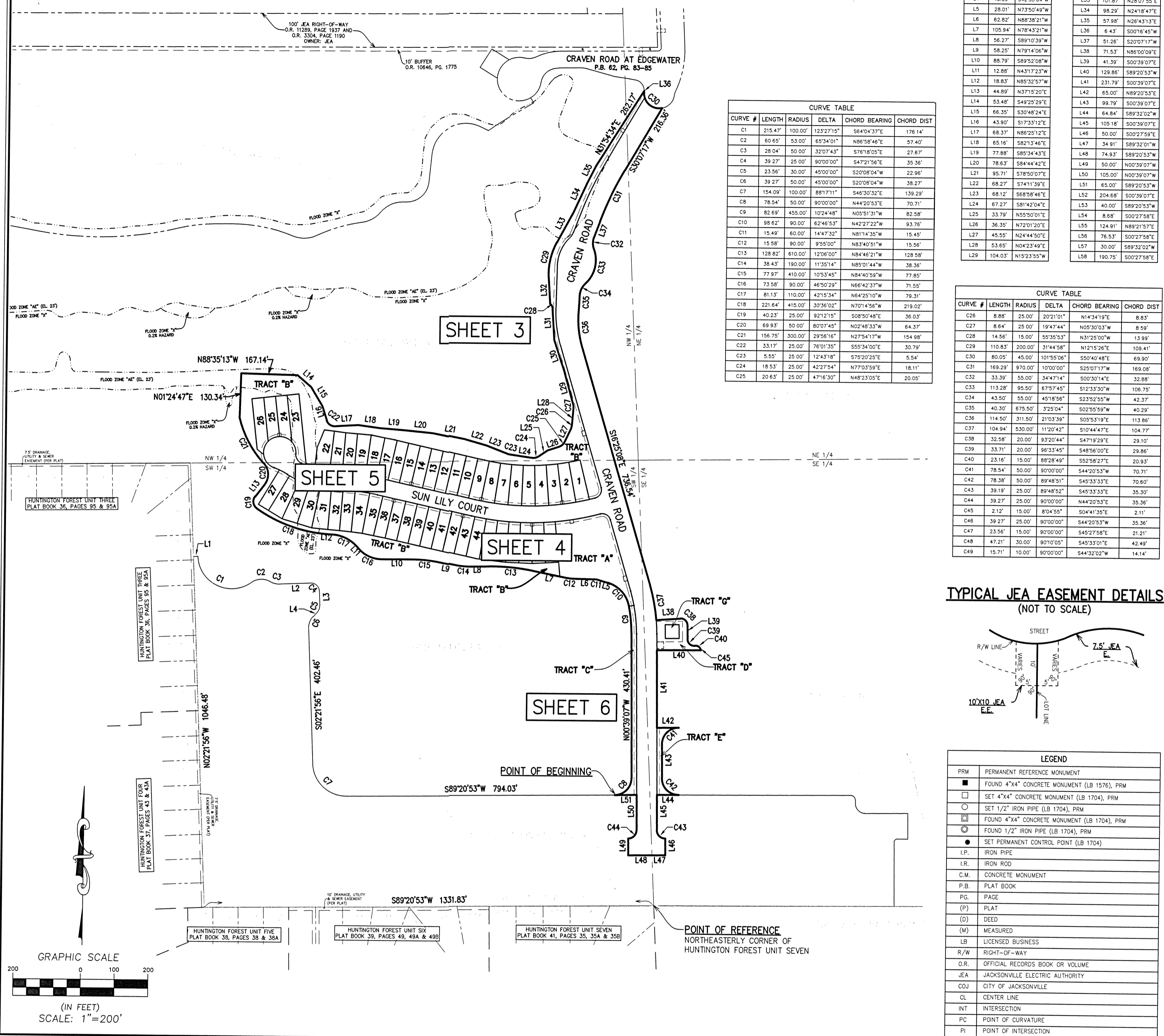


EVERLAKE PHASE 1

A PORTION OF SECTION 33, TOWNSHIP 3 SOUTH, RANGE 27 EAST, THE CITY OF JACKSONVILLE, DUVAL COUNTY, FLORIDA



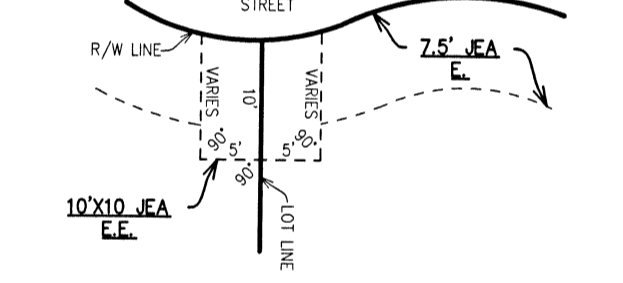
CURVE #	LENGTH	RADIUS	DELTA	CHORD BEARING	CHORD DIST
C1	215.47	100.00	122.271°	S84°04'37"E	176.14
C2	60.69	30.00	62.340°	N85°08'51"E	57.40
C3	28.04	50.00	32.074°	S78°05'21"E	27.67
C4	39.27	25.00	80.000°	S47°01'56"E	35.30
C5	23.56	45.00	45.000°	S20°08'04"W	23.86
C6	39.27	50.00	45.000°	S20°08'04"W	38.27
C7	154.08	100.00	89.971°	S40°20'32"E	139.29
C8	78.54	50.00	80.000°	N44°20'32"E	70.71
C9	85.69	455.00	1024.48°	N05°01'01"W	80.58
C10	98.62	90.00	62.465°	N42°21'22"W	93.76
C11	15.49	60.00	144.923°	N81°14'30"W	15.45
C12	15.58	60.00	89.950°	N82°40'51"W	15.56
C13	128.82	610.00	1230.00°	N84°02'17"W	128.58
C14	38.42	180.00	113.954°	N89°01'44"W	38.36
C15	77.97	410.00	105.545°	N84°03'59"W	77.85
C16	73.58	90.00	46.920°	N86°42'37"W	71.55
C17	81.53	110.00	42.925°	N64°29'10"W	78.31
C18	223.64	410.00	309.020°	N70°14'16"W	214.02
C19	40.23	25.00	92.912°	S08°50'48"E	36.03
C20	69.83	50.00	80.074°	N02°04'33"W	64.37
C21	156.75	300.00	29.561°	N27°54'17"W	154.88
C22	33.17	25.00	76.913°	S55°34'00"E	30.79
C23	1.85	25.00	124.576°	S72°32'21"E	6.54
C24	18.53	25.00	42.9754°	N79°03'59"E	18.11
C25	20.63	25.00	47.6130°	N48°23'05"E	20.00

LINE #	LENGTH	DIRECTION
L1	15.83	N87°38'04"E
L2	92.24	N87°38'04"E
L3	42.57	S02°21'55"E
L4	16.50	S42°09'04"W
L5	28.01	N75°50'49"W
L6	62.82	N88°38'21"W
L7	105.94	N78°43'21"W
L8	58.27	S89°10'29"W
L9	58.20	N78°04'04"W
L10	88.79	S69°52'04"W
L11	12.88	N43°17'23"W
L12	18.83	N85°32'37"W
L13	44.89	N37°19'20"E
L14	53.48	S44°23'22"E
L15	66.30	S50°48'24"E
L16	43.80	S17°33'12"E
L17	68.37	N88°25'12"E
L18	65.16	S82°34'42"E
L19	77.88	S85°34'42"E
L20	78.63	S84°44'44"E
L21	95.71	S78°50'07"E
L22	68.27	S74°11'39"E
L23	68.12	S88°58'44"E
L24	67.27	S81°40'42"E
L25	35.79	N05°50'01"E
L26	38.30	N72°01'20"E
L27	45.55	N24°44'30"E
L28	53.65	N04°23'47"E
L29	104.03	N09°23'59"W

LINE #	LENGTH	DIRECTION
L30	94.82	N18°55'09"W
L31	95.97	N03°37'03"W
L32	77.84	N03°37'03"W
L33	100.87	N08°00'50"E
L34	59.28	N24°04'47"E
L35	57.89	N26°43'15"E
L36	6.43	S00°16'45"W
L37	51.28	S20°07'17"W
L38	11.52	N88°00'00"E
L39	41.50	S02°39'07"E
L40	129.86	S89°20'53"W
L41	231.78	S00°39'07"E
L42	65.00	N89°20'53"E
L43	84.79	S00°39'07"E
L44	64.84	S89°22'02"W
L45	105.18	S00°39'07"E
L46	50.00	S00°27'54"E
L47	34.91	S89°32'01"W
L48	74.89	S89°20'53"W
L49	50.00	N02°33'07"W
L50	105.00	N00°39'07"W
L51	65.00	S89°20'53"W
L52	204.68	S00°39'07"E
L53	40.00	S89°20'53"W
L54	61.66	S00°27'54"E
L55	124.91	N89°21'57"E
L56	78.53	S00°27'54"E
L57	30.00	S89°32'02"W
L58	190.75	S00°27'54"E

CURVE #	LENGTH	RADIUS	DELTA	CHORD BEARING	CHORD DIST
C26	8.89	25.00	20.971°	N14°34'18"E	8.83
C27	6.64	25.00	19.474°	N05°30'53"W	6.59
C28	14.56	15.00	55.303°	N31°25'00"W	13.89
C29	110.83	200.00	3144.58°	N02°15'24"E	109.41
C30	80.00	45.00	109.980°	S00°44'48"E	88.80
C31	169.29	970.00	10700.00°	S25°07'17"W	169.00
C32	33.39	55.00	34.9714°	S00°30'14"E	32.88
C33	113.28	95.50	87.5745°	S12°32'30"W	106.70
C34	43.50	55.00	49.8186°	S23°25'55"W	42.37
C35	42.90	678.00	370.04°	S02°59'59"W	42.29
C36	114.50	311.50	2100.38°	S00°57'37"E	113.80
C37	104.84	630.00	1130.94°	S10°44'47"E	104.77
C38	32.58	20.00	83.2044°	S47°19'29"E	29.10
C39	33.71	20.00	88.3245°	S48°56'00"E	29.86
C40	23.87	15.00	89.9499°	S52°58'27"E	20.83
C41	78.54	50.00	80.0000°	S44°03'37"W	70.71
C42	78.30	50.00	89.8451°	S40°33'33"E	70.60
C43	39.19	25.00	89.6832°	S49°33'33"E	35.30
C44	39.27	25.00	80.0000°	N44°20'53"E	35.36
C45	2.12	15.00	874.700°	S04°41'35"E	2.17
C46	39.27	25.00	80.0000°	S44°03'37"W	35.30
C47	23.56	15.00	80.0000°	S49°27'58"E	21.21
C48	47.21	30.00	80.0100°	S49°33'01"E	42.49
C49	15.71	10.00	80.0000°	S44°32'02"W	14.14

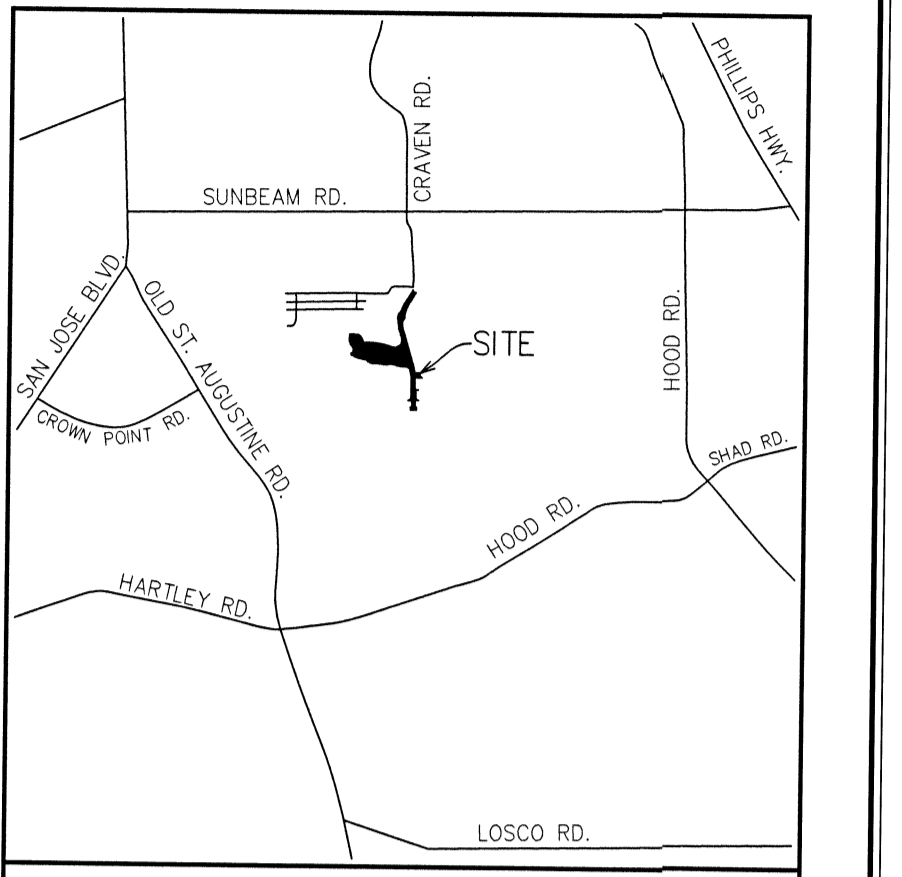
TYPICAL JEA EASEMENT DETAILS (NOT TO SCALE)



PRM	PERMANENT REFERENCE MONUMENT
■	FOUND 4"x4" CONCRETE MONUMENT (LB 1576), PRM
□	SET 4"x4" CONCRETE MONUMENT (LB 1704), PRM
○	SET 1/2" IRON PIPE (LB 1704), PRM
□	FOUND 4"x4" CONCRETE MONUMENT (LB 1704), PRM
○	FOUND 1/2" IRON PIPE (LB 1704), PRM
●	SET PERMANENT CONTROL POINT (LB 1704)
I.P.	IRON PIPE
I.R.	IRON ROD
C.M.	CONCRETE MONUMENT
P.B.	PLAT BOOK
P.G.	PAGE
(P)	PLAT
(D)	DEED
(M)	MEASURED
LR	LICENSED BUSINESS
R/W	RIGHT-OF-WAY
O.R.	OFFICIAL RECORDS BOOK OR VOLUME
JEA	JACKSONVILLE ELECTRIC AUTHORITY
CDJ	CITY OF JACKSONVILLE
CL	CENTER LINE
INT	INTERSECTION
PC	POINT OF CURVATURE
PI	POINT OF INTERSECTION

PLAT BOOK 77 PAGE 188

SHEET 2 OF 6
(SEE SHEET 2 FOR GENERAL NOTES & LEGEND)



SCALE N.T.S. VICINITY MAP

- NOTES:
- BEARINGS AND COORDINATES SHOWN HEREON REFER TO STATE PLANE COORDINATES, NORTH AMERICAN DATUM 83, FOR THE STATE OF FLORIDA, EAST ZONE (NAD83).
 - BEARINGS AND COORDINATES SHOWN HEREON REFER TO STATE PLANE COORDINATES, NORTH AMERICAN DATUM 83, FOR THE STATE OF FLORIDA, EAST ZONE (NAD83).
 - BEARINGS AND COORDINATES SHOWN HEREON REFER TO STATE PLANE COORDINATES, NORTH AMERICAN DATUM 83, FOR THE STATE OF FLORIDA, EAST ZONE (NAD83).
 - CERTAIN DENOTED EASEMENTS ARE RESERVED FOR THE JEA FOR USE IN CONJUNCTION WITH THE UNDERGROUND ELECTRICAL DISTRIBUTION SYSTEM.
 - JEA EQUIPMENT EASEMENTS "JEA E.E." SHALL REMAIN TOTALLY UNOBSUCTURED BY ANY IMPROVEMENTS THAT MAY IMPEDE THE USE AND ACCESS OF SAID EASEMENTS BY THE JEA.
 - JEA EASEMENTS "JEA E." SHALL REMAIN TOTALLY UNOBSUCTURED BY ANY IMPROVEMENTS THAT MAY IMPEDE THE USE OF SAID EASEMENTS BY THE JEA. THE INSTALLATION OF FENCES, HEDGES AND LANDSCAPING IS PERMISSIBLE BUT SUBJECT TO REMOVAL BY THE JEA AT THE EXPENSE OF EACH LOT OWNER FOR THE REMOVAL AND FOR THE REPLACEMENT OF SUCH ITEMS.
 - ALL PLATTED UTILITY EASEMENTS SHALL PROVIDE THAT SUCH EASEMENTS SHALL ALSO BE EASEMENTS FOR THE CONSTRUCTION, INSTALLATION, MAINTENANCE AND OPERATION OF CABLE TELEVISION SERVICES. PROVIDED, HOWEVER, NO SUCH CONSTRUCTION, INSTALLATION, MAINTENANCE, AND OPERATION OF CABLE TELEVISION SERVICES SHALL INTERFERE WITH THE FACILITIES AND SERVICES OF AN ELECTRIC, TELEPHONE, GAS OR OTHER PUBLIC UTILITY. IN THE EVENT A CABLE TELEVISION COMPANY DAMAGES THE FACILITIES OF A PUBLIC UTILITY, IT SHALL BE SOLELY RESPONSIBLE FOR THE DAMAGES. THIS SECTION SHALL NOT APPLY TO THOSE EASEMENTS GRANTED TO OR OBTAINED BY A PARTICULAR ELECTRIC, TELEPHONE, GAS, OR OTHER PUBLIC UTILITY. SUCH CONSTRUCTION, INSTALLATION, MAINTENANCE AND OPERATION SHALL COMPLY WITH THE NATIONAL ELECTRIC SAFETY CODE AS ADOPTED BY THE FLORIDA PUBLIC SERVICE COMMISSION.
 - THE APPROXIMATE TOP OF BANK OF THE STORMWATER MANAGEMENT FACILITY SHOWN HEREON DEPICTS A GRAPHIC REPRESENTATION BASED ON THE ENGINEERING PLANS FOR THIS PLAT AND DO NOT REPRESENT ACTUAL "AS-BUILT" CONDITIONS.
 - EASEMENTS SHOWN HEREON AND DESIGNATED AS UNOBSUCTURED EASEMENTS SHALL REMAIN UNOBSUCTURED BY ANY PERMANENT IMPROVEMENTS WHICH MAY IMPEDE THE USE OF SAID EASEMENT BY THE CITY OF JACKSONVILLE. THE CONSTRUCTION OF DRIVEWAYS AND THE INSTALLATION OF FENCES, HEDGES AND LANDSCAPING IS PERMISSIBLE SUBJECT TO REMOVAL BY THE CITY AT THE EXPENSE OF EACH LOT OWNER FOR THE REMOVAL AND/OR REPLACEMENT OF SUCH ITEMS. THE EASEMENTS SHOWN HEREON AND DESIGNATED AS UNOBSUCTURED/ACCESS EASEMENTS, SHALL REMAIN TOTALLY UNOBSUCTURED BY ANY IMPROVEMENTS THAT MAY IMPEDE THE USE AND ACCESS OF SAID EASEMENT BY THE CITY OF JACKSONVILLE.
 - THERE ARE A TOTAL OF 50 LOTS AND 7 TRACTS IN THIS PHASE.

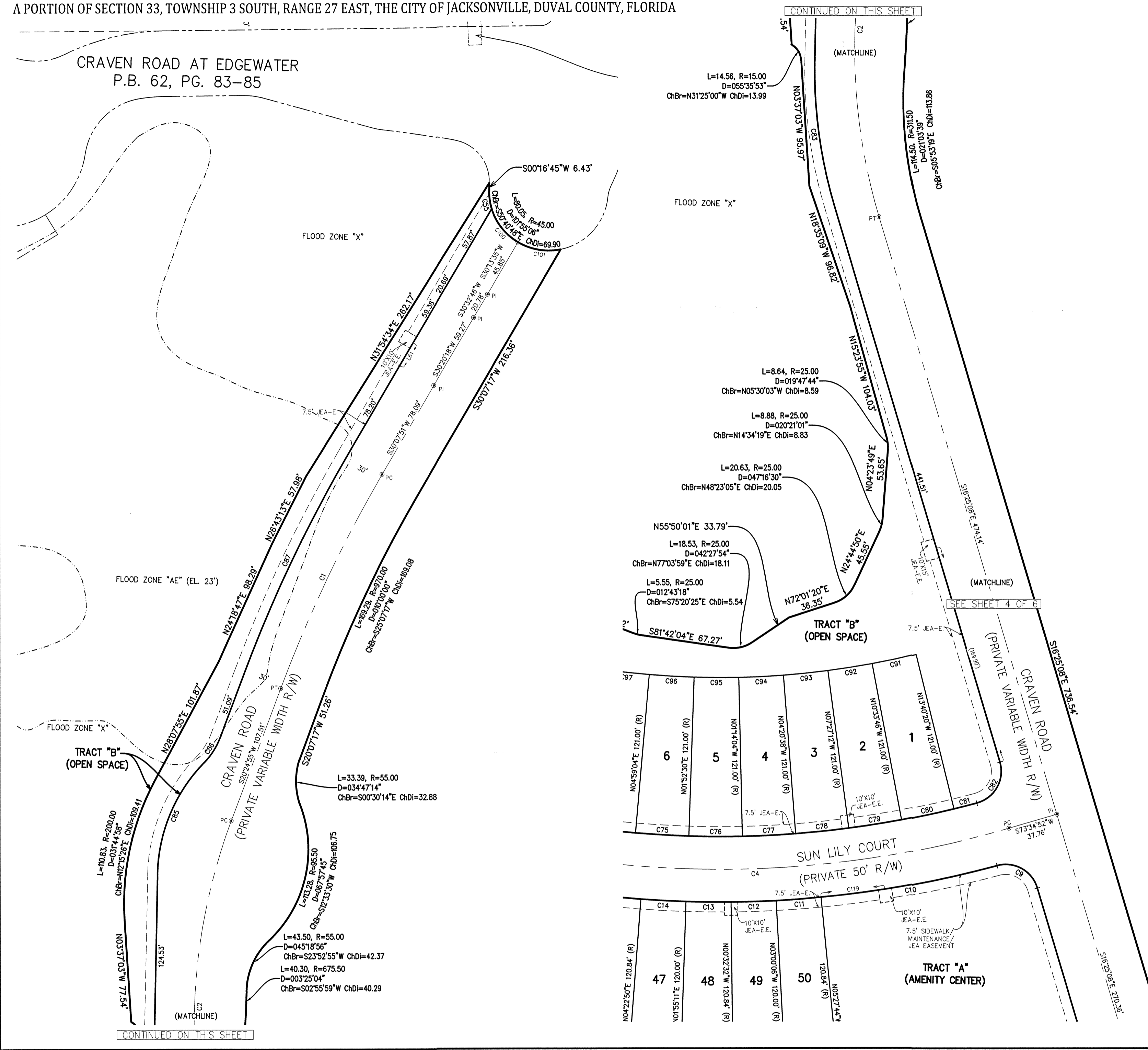
Prepared By:
RICHARD P. CLARSON AND ASSOCIATES, INC.
 Professional Surveyors and Mappers
 1643 Naldo Avenue, Jacksonville, FL 32207
 Phone: 904.396.2623 - Website: clarsonfi.com

(PLANS) CITY DEVELOPMENT NO. 9819.000
 (PLAT) CITY DEVELOPMENT NO. 9819.000

EVERLAKE PHASE 1

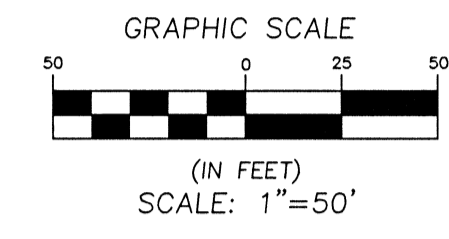
A PORTION OF SECTION 33, TOWNSHIP 3 SOUTH, RANGE 27 EAST, THE CITY OF JACKSONVILLE, DUVAL COUNTY, FLORIDA

CRAVEN ROAD AT EDGEWATER
P.B. 62, PG. 83-85



PLAT BOOK 77 PAGE 189

SHEET 3 OF 6
(SEE SHEET 2 FOR GENERAL NOTES & LEGEND)



CURVE TABLE					
CURVE #	LENGTH	RADIUS	DELTA	CHORD BEARING	CHORD DIST
C2	289.29'	450.00'	36°50'03"	S01°59'53"W	284.34'
C4	389.64'	770.00'	28°59'35"	S88°04'39"W	385.50'
C9	38.74'	25.00'	88°47'43"	S60°49'00"E	34.98'
C10	135.31'	795.00'	9°45'07"	N79°39'42"E	135.15'
C11	34.14'	795.00'	2°27'38"	N85°46'05"E	34.14'
C12	34.14'	795.00'	2°27'34"	N88°13'41"E	34.12'
C13	34.14'	795.00'	2°27'44"	S89°18'40"E	34.16'
C14	34.14'	795.00'	2°27'39"	S86°50'59"E	34.14'
C55	14.37'	45.00'	18°17'52"	N08°52'11"W	14.31'
C75	40.43'	745.00'	3°06'34"	N86°34'13"W	40.43'
C76	40.43'	745.00'	3°06'34"	N89°40'47"W	40.43'
C77	40.43'	745.00'	3°06'34"	S87°12'39"W	40.43'
C78	40.43'	745.00'	3°06'34"	S84°06'05"W	40.43'
C79	40.43'	745.00'	3°06'34"	S80°59'31"W	40.43'
C80	40.43'	745.00'	3°06'34"	S77°52'57"W	40.43'
C81	17.87'	745.00'	1°22'29"	S75°38'26"W	17.87'
C82	39.87'	25.00'	91°22'20"	S29°16'02"W	35.78'
C83	112.15'	365.00'	17°36'20"	S07°36'58"E	111.71'
C85	94.06'	125.50'	42°56'26"	S22°39'24"W	91.87'
C86	22.76'	55.00'	23°42'43"	S32°16'16"W	22.60'
C87	185.51'	1094.00'	9°42'56"	S25°16'23"W	185.29'
C100	33.09'	45.00'	42°07'50"	S37°48'20"E	32.35'
C101	33.59'	45.00'	42°46'06"	S80°15'18"E	32.82'
C119	48.74'	795.00'	3°30'45"	N82°46'53"E	48.73'

LINE TABLE		
LINE #	LENGTH	DIRECTION
L61	20.53'	N30°20'19"E

Prepared By:
RICHARD P. CLARSON AND ASSOCIATES, INC.
Professional Surveyors and Mappers
1643 Naldo Avenue, Jacksonville, FL 32207
Phone: 904.396.2623 - Website: clarsonfl.com

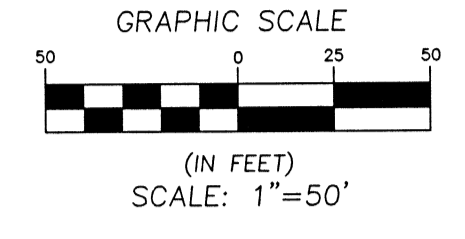
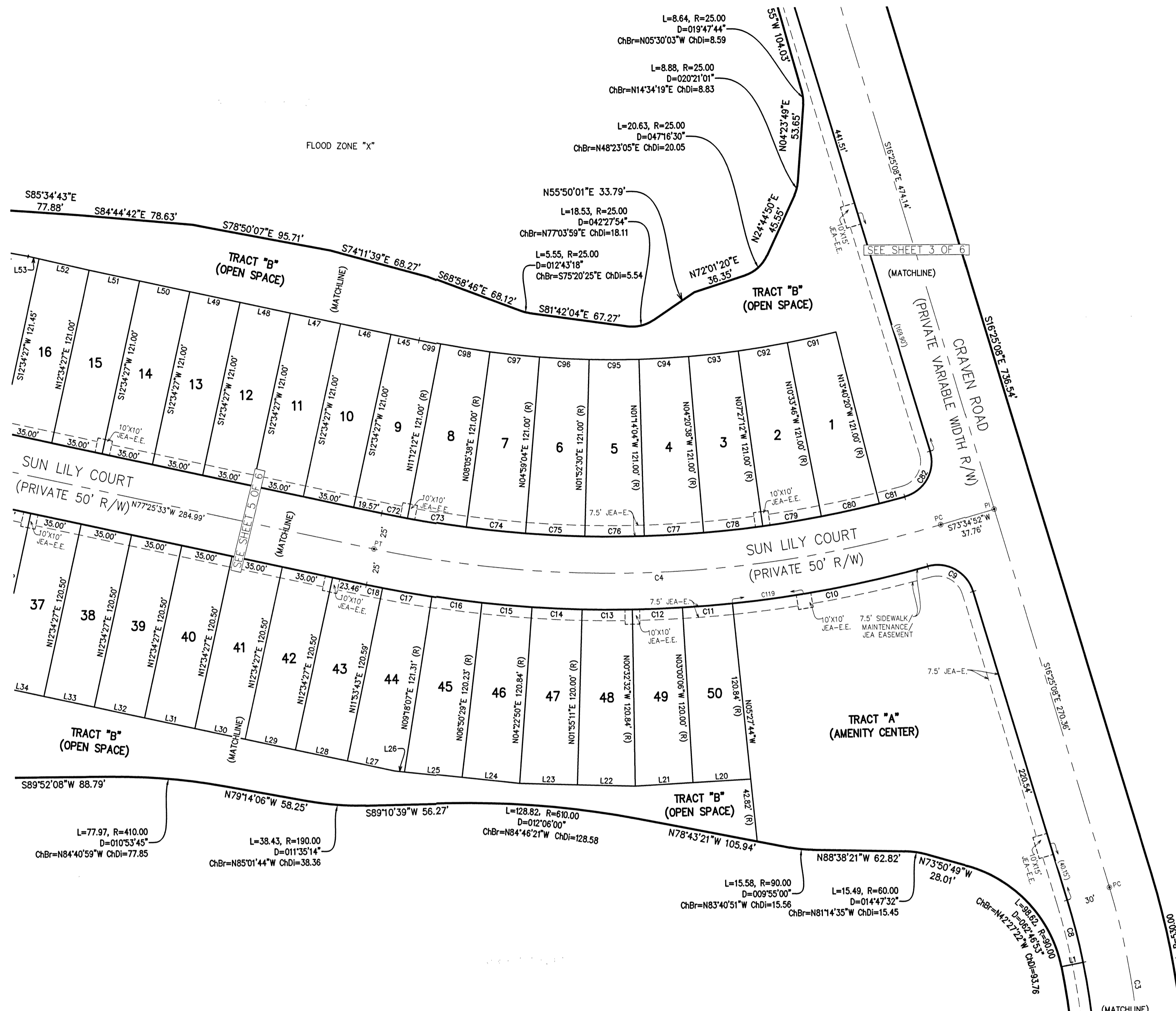
(PLANS) CITY DEVELOPMENT NO. 9819.000
(PLAT) CITY DEVELOPMENT NO. 9819.000

EVERLAKE PHASE 1

A PORTION OF SECTION 33, TOWNSHIP 3 SOUTH, RANGE 27 EAST, THE CITY OF JACKSONVILLE, DUVAL COUNTY, FLORIDA

PLAT BOOK **77** PAGE **190**

SHEET 4 OF 6
(SEE SHEET 2 FOR NOTES & LEGEND)



LINE TABLE			LINE TABLE		
LINE #	LENGTH	DIRECTION	LINE #	LENGTH	DIRECTION
L1	15.00'	N78°56'05"E	L32	35.00'	N77°25'33"W
L20	39.32'	S86°59'54"W	L33	35.00'	N77°25'33"W
L21	39.30'	S86°59'54"W	L34	35.00'	N77°25'33"W
L22	39.34'	N88°04'59"W	L45	19.57'	N77°25'33"W
L23	39.32'	N88°04'40"W	L46	35.00'	N77°25'33"W
L24	39.32'	N83°29'46"W	L47	35.00'	N77°25'33"W
L25	39.34'	N83°29'46"W	L48	35.00'	N77°25'33"W
L26	6.50'	N83°29'46"W	L49	35.00'	N77°25'33"W
L27	33.19'	N77°25'33"W	L50	35.00'	N77°25'33"W
L28	36.19'	N77°25'33"W	L51	35.00'	N77°25'33"W
L29	35.00'	N77°25'33"W	L52	35.00'	N76°41'37"W
L30	35.00'	N77°25'33"W	L53	7.55'	N76°41'37"W
L31	35.00'	N77°25'33"W	L54	30.02'	N78°52'44"W

CURVE TABLE					
CURVE #	LENGTH	RADIUS	DELTA	CHORD BEARING	CHORD DIST
C3	137.59'	500.00'	10°46'01"	S08°32'08"E	137.16'
C8	43.92'	470.00'	5°21'13"	S13°44'32"E	43.90'
C9	38.74'	25.00'	88°47'43"	S6°49'00"E	34.88'
C10	135.31'	795.00'	9°45'07"	N79°39'42"E	135.15'
C11	34.14'	795.00'	2°27'38"	N82°46'05"E	34.14'
C12	34.12'	795.00'	2°27'34"	N88°13'41"E	34.12'
C13	34.12'	795.00'	2°27'44"	N89°18'40"E	34.16'
C14	34.14'	795.00'	2°27'39"	S84°50'59"E	34.14'
C15	34.14'	795.00'	2°27'39"	S84°23'21"E	34.14'
C16	34.14'	795.00'	2°27'39"	S81°55'42"E	34.14'
C17	34.14'	795.00'	2°27'39"	S79°28'03"E	34.14'
C18	11.26'	795.00'	0°48'41"	S77°49'53"E	11.26'
C72	17.82'	745.00'	1°22'15"	N78°06'40"W	17.82'
C73	40.43'	745.00'	3°06'34"	N80°21'05"W	40.43'
C74	40.43'	745.00'	3°06'34"	N83°27'39"W	40.43'
C75	40.43'	745.00'	3°06'34"	N86°34'13"W	40.43'
C76	40.43'	745.00'	3°06'34"	N89°40'47"W	40.43'
C77	40.43'	745.00'	3°06'34"	S87°12'39"W	40.43'
C78	40.43'	745.00'	3°06'34"	S84°06'05"W	40.43'
C79	40.43'	745.00'	3°06'34"	S80°59'31"W	40.43'
C80	40.43'	745.00'	3°06'34"	S77°52'57"W	40.43'
C81	17.87'	745.00'	1°22'29"	S75°38'26"W	17.87'
C82	39.87'	25.00'	91°22'20"	S29°16'02"W	35.78'
C91	33.86'	624.00'	3°06'34"	S77°52'57"W	33.86'
C92	33.86'	624.00'	3°06'34"	S80°59'31"W	33.86'
C93	33.86'	624.00'	3°06'34"	S84°06'05"W	33.86'
C94	33.86'	624.00'	3°06'34"	S87°12'39"W	33.86'
C95	33.86'	624.00'	3°06'34"	N89°40'47"W	33.86'
C96	33.86'	624.00'	3°06'34"	N86°34'13"W	33.86'
C97	33.86'	624.00'	3°06'34"	N83°27'39"W	33.86'
C98	33.86'	624.00'	3°06'34"	N80°21'05"W	33.86'
C99	14.93'	624.00'	1°22'15"	N78°06'40"W	14.93'
C119	48.74'	795.00'	3°30'45"	N78°46'53"E	48.73'

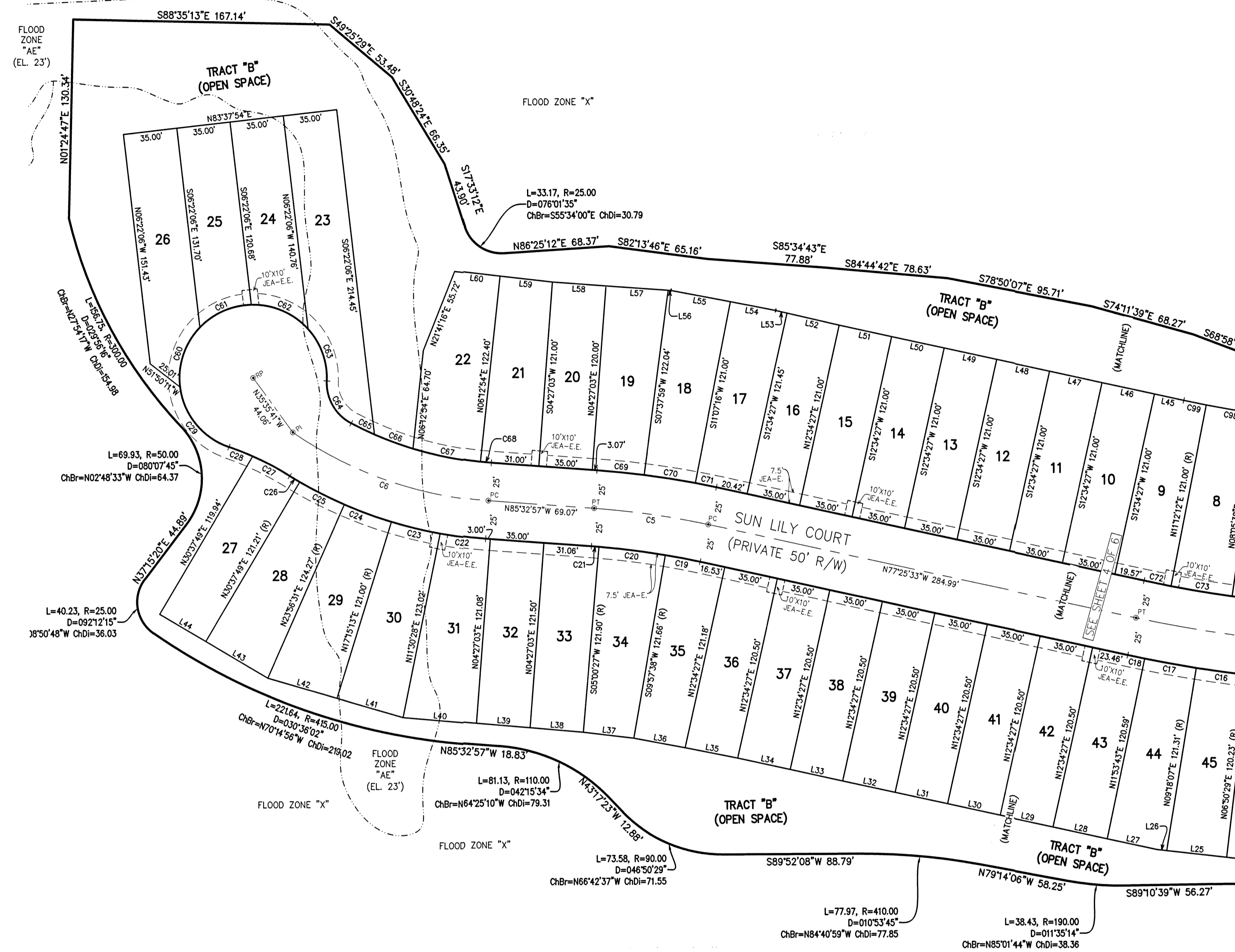
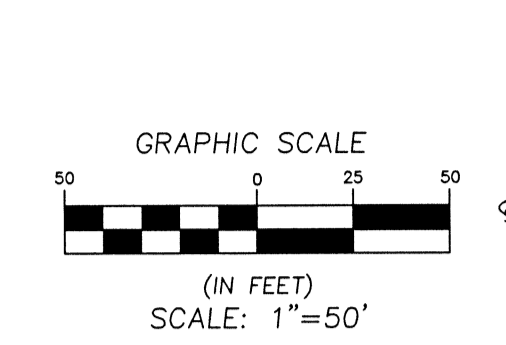
Prepared By:
RICHARD P. CLARSON AND ASSOCIATES, INC.
Professional Surveyors and Mappers
1643 Naldo Avenue, Jacksonville, FL 32207
Phone: 904.396.2623 - Website: clarsonfi.com

(PLANS) CITY DEVELOPMENT NO. 9819.000
(PLAT) CITY DEVELOPMENT NO. 9819.000

EVERLAKE PHASE 1

A PORTION OF SECTION 33, TOWNSHIP 3 SOUTH, RANGE 27 EAST, THE CITY OF JACKSONVILLE, DUVAL COUNTY, FLORIDA

SHEET 5 OF 6
(SEE SHEET 2 FOR GENERAL NOTES & LEGEND)



LINE TABLE			LINE TABLE		
LINE #	LENGTH	DIRECTION	LINE #	LENGTH	DIRECTION
L29	35.00	N77°25'33\"W	L45	19.57	N77°25'33\"W
L30	35.00	N77°25'33\"W	L46	35.00	N77°25'33\"W
L31	35.00	N77°25'33\"W	L47	35.00	N77°25'33\"W
L32	35.00	N77°25'33\"W	L48	35.00	N77°25'33\"W
L33	35.00	N77°25'33\"W	L49	35.00	N77°25'33\"W
L34	35.00	N77°25'33\"W	L50	35.00	N77°25'33\"W
L35	35.01	N78°32'15\"W	L51	35.00	N77°25'33\"W
L36	34.02	N78°54'42\"W	L52	35.00	N78°41'37\"W
L37	33.12	N82°55'43\"W	L53	7.50	N77°25'33\"W
L38	34.79	N84°51'27\"W	L54	30.02	N78°52'44\"W
L39	35.00	N84°51'27\"W	L55	39.39	N78°52'44\"W
L40	47.95	N84°51'27\"W	L56	1.81	N85°32'57\"W
L41	44.93	N73°23'01\"W	L57	40.65	N85°32'57\"W
L42	47.09	N73°23'01\"W	L58	35.00	N85°32'57\"W
L43	47.09	N8°59'06\"W	L59	34.34	N83°07'14\"W
L44	35.00	N8°59'06\"W	L60	29.69	N83°07'14\"W

CURVE TABLE					
CURVE #	LENGTH	RADIUS	DELTA	CHORD BEARING	CHORD DIST
C5	75.14	530.00	8°07'24\"	N81°29'15\"W	75.09'
C6	34.14	795.00	2°27'39\"	S81°55'42\"E	34.14'
C7	34.14	795.00	2°27'39\"	S79°28'03\"E	34.14'
C8	11.26	795.00	0°46'41\"	S77°49'53\"E	11.26'
C9	23.04	505.00	2°36'49\"	S78°43'57\"E	23.03'
C10	43.60	505.00	4°57'11\"	S82°30'57\"E	43.64'
C11	4.91	505.00	0°33'24\"	S85°16'15\"E	4.91'
C12	29.88	280.00	6°06'53\"	S82°29'31\"E	29.87'
C13	32.69	280.00	6°41'18\"	S84°05'28\"E	32.67'
C14	32.69	280.00	6°41'18\"	S89°24'08\"E	32.67'
C15	32.69	280.00	6°41'18\"	S64°42'50\"E	32.67'
C16	7.60	280.00	1°33'17\"	S58°35'33\"E	7.60'
C17	27.45	200.00	7°51'49\"	S81°44'48\"E	27.43'
C18	16.50	200.00	4°45'08\"	S85°03'17\"E	16.58'
C19	53.10	48.00	63°39'42\"	S38°41'00\"E	50.51'
C20	42.40	48.00	50°55'47\"	S18°22'15\"W	41.04'
C21	37.65	48.00	48°42'41\"	S68°08'59\"W	36.69'
C22	41.65	48.00	48°42'41\"	N65°31'20\"W	40.35'
C23	37.12	48.00	44°18'40\"	N19°30'40\"W	36.20'
C24	33.71	30.00	8°42'31\"	N29°32'54\"W	31.97'
C25	16.83	230.00	4°11'32\"	N63°50'16\"W	16.83'
C26	28.82	230.00	6°40'56\"	N69°16'30\"W	28.81'
C27	44.84	230.00	11°10'09\"	N78°12'02\"W	44.78'
C28	7.08	230.00	1°45'51\"	N84°40'02\"W	7.08'
C29	30.82	555.00	3°10'56\"	N83°57'29\"W	30.82'
C30	33.79	555.00	3°29'17\"	N80°37'23\"W	33.78'
C31	14.08	555.00	1°27'11\"	N78°09'09\"W	14.07'
C32	17.82	745.00	1°22'15\"	N78°06'40\"W	17.82'
C33	40.43	745.00	3°06'34\"	N80°21'05\"W	40.43'
C34	33.86	624.00	3°06'34\"	N80°21'05\"W	33.86'
C35	14.93	624.00	1°22'15\"	N78°06'40\"W	14.93'

Prepared By:
RICHARD P. CLARSON AND ASSOCIATES, INC.
 Professional Surveyors and Mappers
 1643 Naldo Avenue, Jacksonville, FL 32207
 Phone: 904.396.2623 - Website: clarsonfi.com

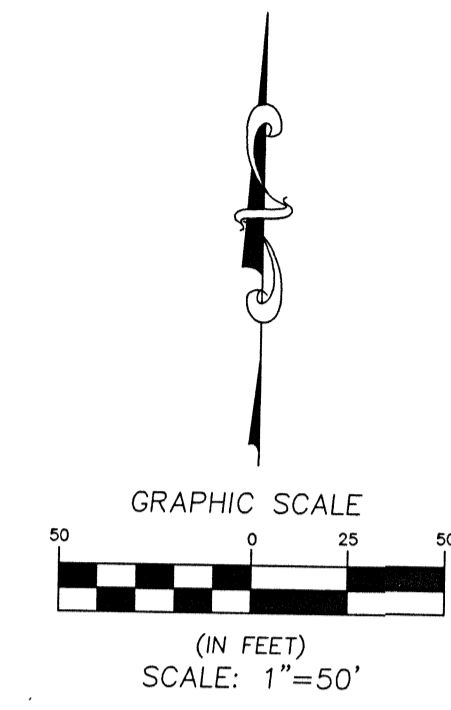
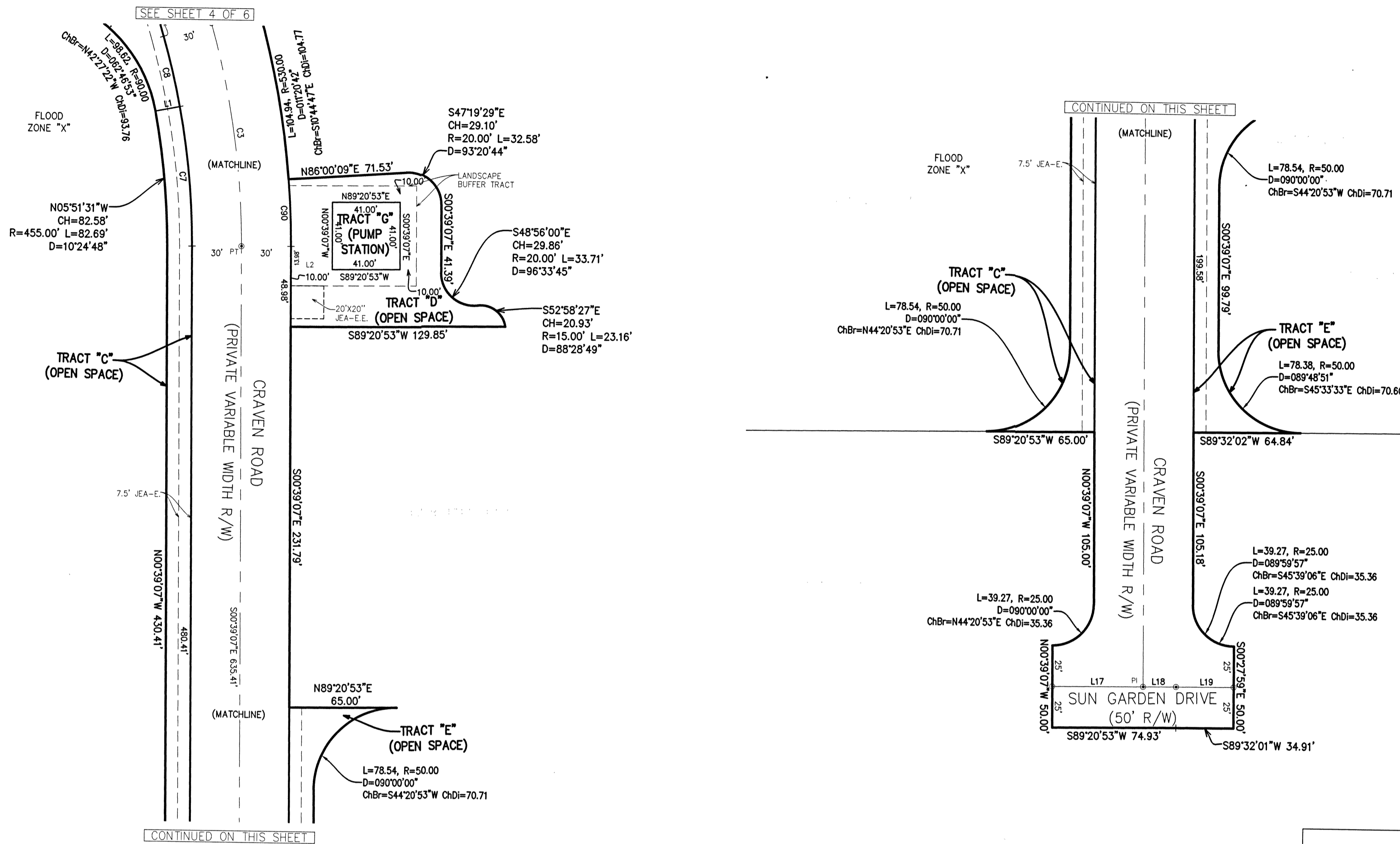
(PLANS) CITY DEVELOPMENT NO. 9819.000
 (PLAT) CITY DEVELOPMENT NO. 9819.000

EVERLAKE PHASE 1

A PORTION OF SECTION 33, TOWNSHIP 3 SOUTH, RANGE 27 EAST, THE CITY OF JACKSONVILLE, DUVAL COUNTY, FLORIDA

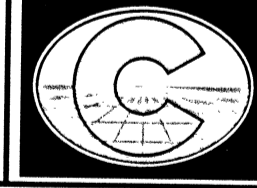
PLAT BOOK 17 PAGE 192

SHEET 6 OF 6
(SEE SHEET 2 FOR GENERAL NOTES & LEGEND)



CURVE #	LENGTH	RADIUS	DELTA	CHORD BEARING	CHORD DIST
C3	137.59'	500.00'	15°46'01"	S08°32'08"E	137.16'
C7	85.42'	470.00'	10°24'48"	S05°51'31"E	85.30'
C8	43.92'	470.00'	5°21'13"	S13°44'32"E	43.90'
C9	40.90'	530.00'	4°25'19"	N02°51'47"W	40.89'

LINE #	LENGTH	DIRECTION
L1	15.00'	N78°56'05"E
L2	25.00'	S89°20'53"W
L17	55.00'	N89°20'53"E
L18	19.97'	N89°20'53"E
L19	34.95'	S89°32'01"W

Prepared By:

RICHARD P. CLARSON AND ASSOCIATES, INC.
 Professional Surveyors and Mappers
 1643 Naldo Avenue, Jacksonville, FL 32207
 Phone: 904.396.2623 - Website: clarsonfi.com

(PLANS) CITY DEVELOPMENT NO. 9819.000
 (PLAT) CITY DEVELOPMENT NO. 9819.000