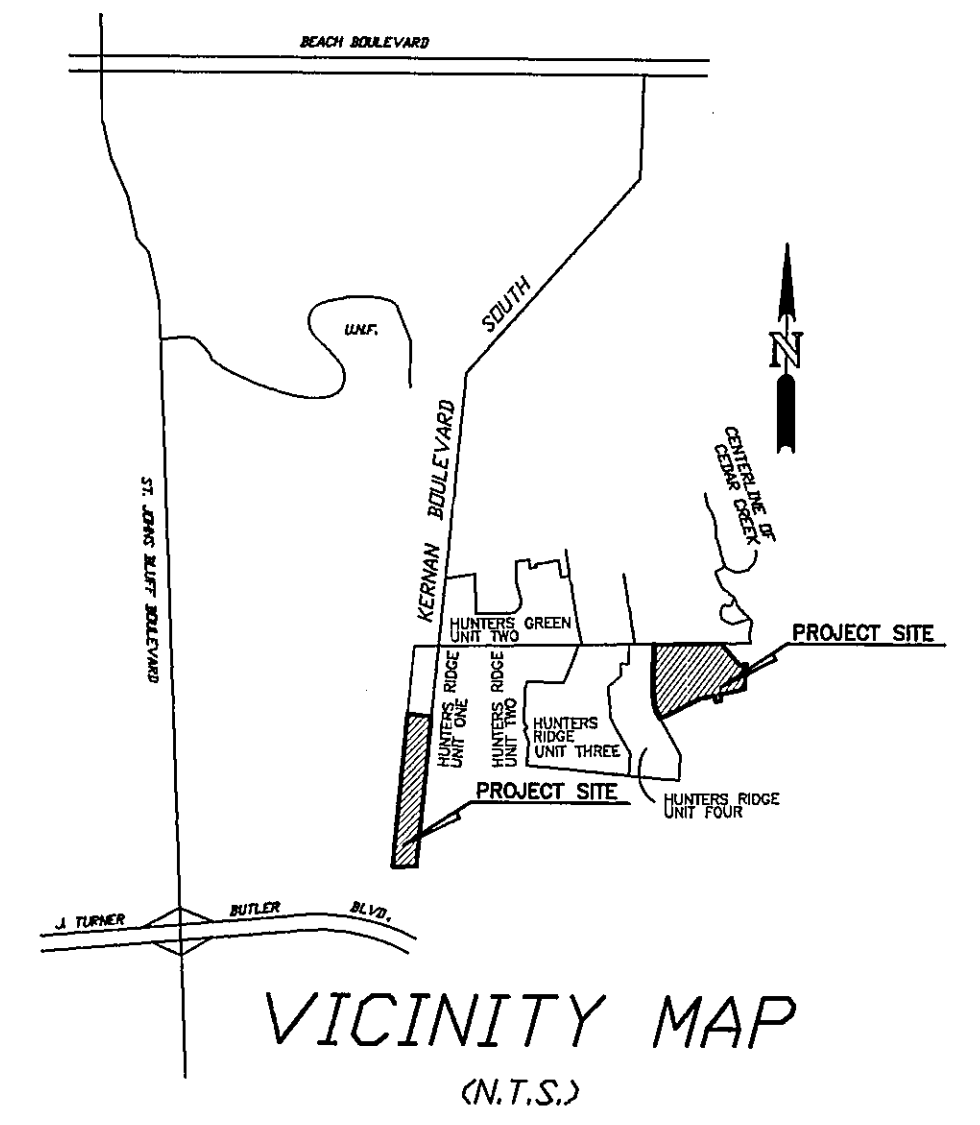
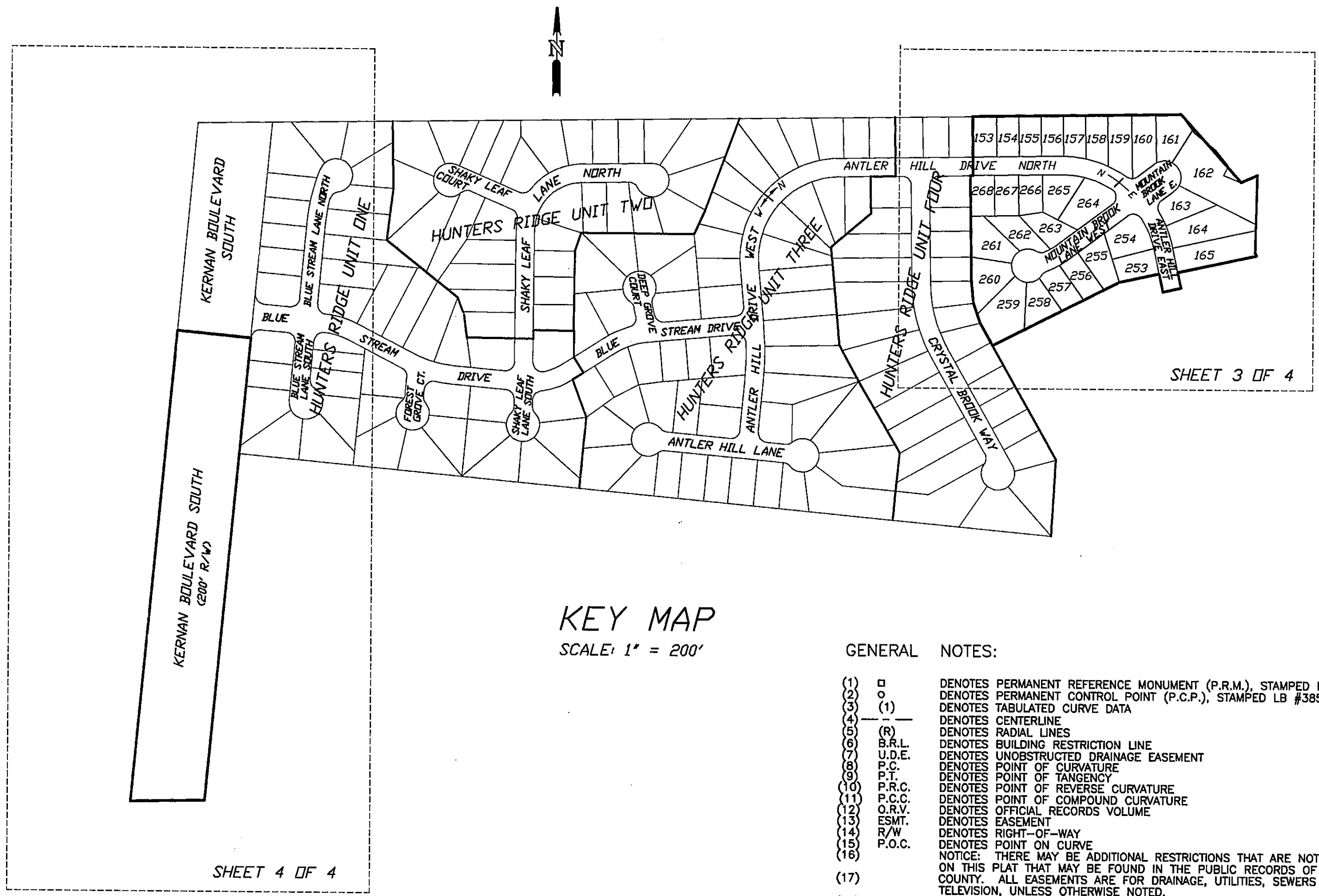


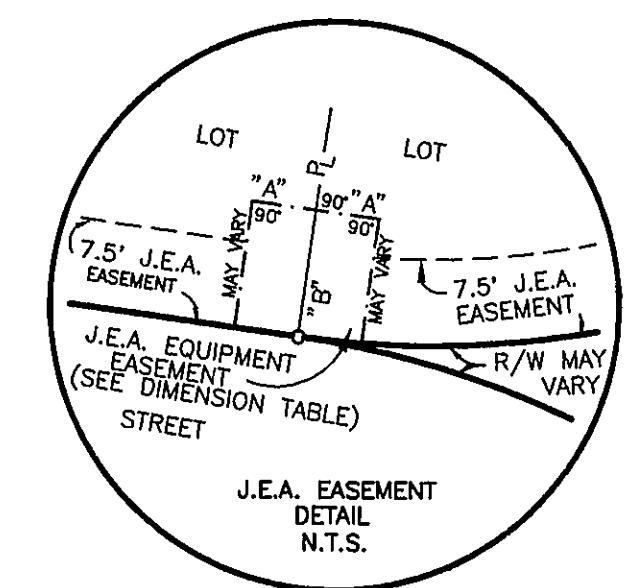
HUNTERS RIDGE UNIT FIVE

A PORTION OF SECTIONS 3 AND 4, TOWNSHIP 3 SOUTH, RANGE 28 EAST,
CITY OF JACKSONVILLE, DUVAL COUNTY, FLORIDA.



KEY MAP
SCALE: 1" = 200'

- GENERAL NOTES:
- (1) □ DENOTES PERMANENT REFERENCE MONUMENT (P.R.M.), STAMPED LB #3857
 - (2) ○ DENOTES PERMANENT CONTROL POINT (P.C.P.), STAMPED LB #3857
 - (3) (1) DENOTES TABULATED CURVE DATA
 - (4) ——— DENOTES CENTERLINE
 - (5) (R) DENOTES RADIAL LINES
 - (6) B.R.L. DENOTES BUILDING RESTRICTION LINE
 - (7) U.D.E. DENOTES UNOBSTRUCTED DRAINAGE EASEMENT
 - (8) P.C. DENOTES POINT OF CURVATURE
 - (9) P.T. DENOTES POINT OF TANGENCY
 - (10) P.R.C. DENOTES POINT OF REVERSE CURVATURE
 - (11) P.C.C. DENOTES POINT OF COMPOUND CURVATURE
 - (12) O.R.V. DENOTES OFFICIAL RECORDS VOLUME
 - (13) ESMT. DENOTES EASEMENT
 - (14) R/W DENOTES RIGHT-OF-WAY
 - (15) P.O.C. DENOTES POINT ON CURVE
 - (16) NOTICE: THERE MAY BE ADDITIONAL RESTRICTIONS THAT ARE NOT RECORDED ON THIS PLAT THAT MAY BE FOUND IN THE PUBLIC RECORDS OF THIS COUNTY. ALL EASEMENTS ARE FOR DRAINAGE, UTILITIES, SEWERS AND CABLE TELEVISION, UNLESS OTHERWISE NOTED.
 - (17) CERTAIN EASEMENTS ARE RESERVED FOR THE JACKSONVILLE ELECTRIC AUTHORITY FOR USE IN CONJUNCTION WITH THE UNDERGROUND ELECTRICAL DISTRIBUTION SYSTEM.
 - "J.E.A.E.E." DENOTES JACKSONVILLE ELECTRIC AUTHORITY EQUIPMENT EASEMENT. THESE EASEMENTS SHALL REMAIN TOTALLY UNOBSTRUCTED BY ANY IMPROVEMENTS THAT MAY IMPEDE THE USE AND ACCESS OF SAID EASEMENT BY THE JACKSONVILLE ELECTRIC AUTHORITY.
 - "J.E.A.E." DENOTES JACKSONVILLE ELECTRIC AUTHORITY EASEMENT. THESE EASEMENTS SHALL REMAIN TOTALLY UNOBSTRUCTED BY ANY PERMANENT IMPROVEMENTS THAT MAY IMPEDE THE USE OF SAID EASEMENT BY THE JACKSONVILLE ELECTRIC AUTHORITY. THE INSTALLATION OF FENCES, HEDGES AND LANDSCAPING IS PERMISSIBLE BUT IS SUBJECT TO REMOVAL BY THE JACKSONVILLE ELECTRIC AUTHORITY AT THE EXPENSE OF EACH LOT OWNER FOR THE REMOVAL AND FOR REPLACEMENT OF SUCH ITEMS.
 - (19) BEARINGS BASED ON THE EASTERLY BOUNDARY LINE OF HUNTERS RIDGE UNIT FOUR, S.00°56'19"E.
 - (20) ■ DENOTES FOUND PERMANENT REFERENCE MONUMENT (P.R.M.), STAMPED LB #3857, UNLESS OTHERWISE NOTED.
 - (21) THE EASEMENTS SHOWN HEREON AND DESIGNATED AS UNOBSTRUCTED EASEMENTS SHALL REMAIN TOTALLY UNOBSTRUCTED BY ANY PERMANENT IMPROVEMENTS WHICH MAY IMPEDE THE USE OF SAID EASEMENT BY THE CITY OF JACKSONVILLE. THE CONSTRUCTION OF DRIVEWAYS AND THE INSTALLATION OF FENCES, HEDGES AND LANDSCAPING IS PERMISSIBLE BUT SUBJECT TO REMOVAL BY THE CITY AT THE EXPENSE OF EACH LOT OWNER FOR THE REMOVAL AND/OR REPLACEMENT OF SUCH ITEMS.
 - (22) THE EASEMENTS SHOWN HEREON AND DESIGNATED AS UNOBSTRUCTED/ACCESS EASEMENTS, SHALL REMAIN TOTALLY UNOBSTRUCTED BY ANY IMPROVEMENTS THAT MAY IMPEDE THE USE AND ACCESS OF SAID EASEMENTS BY THE CITY OF JACKSONVILLE.

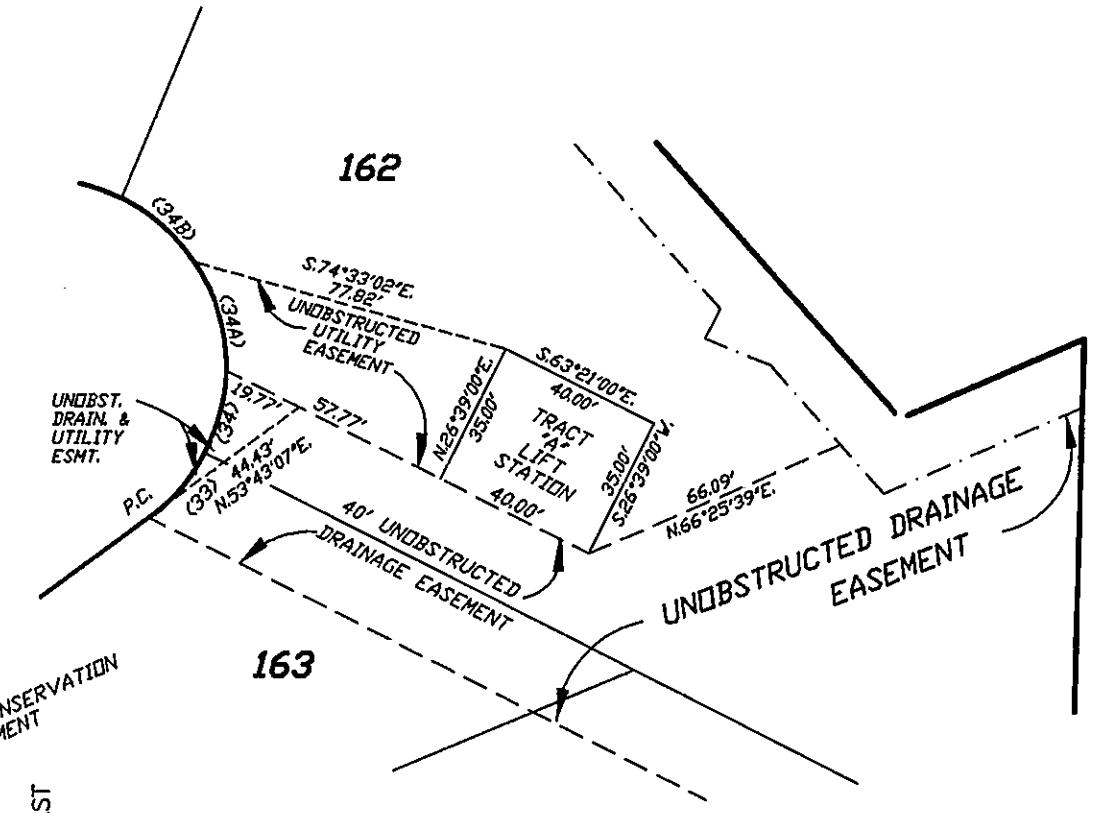
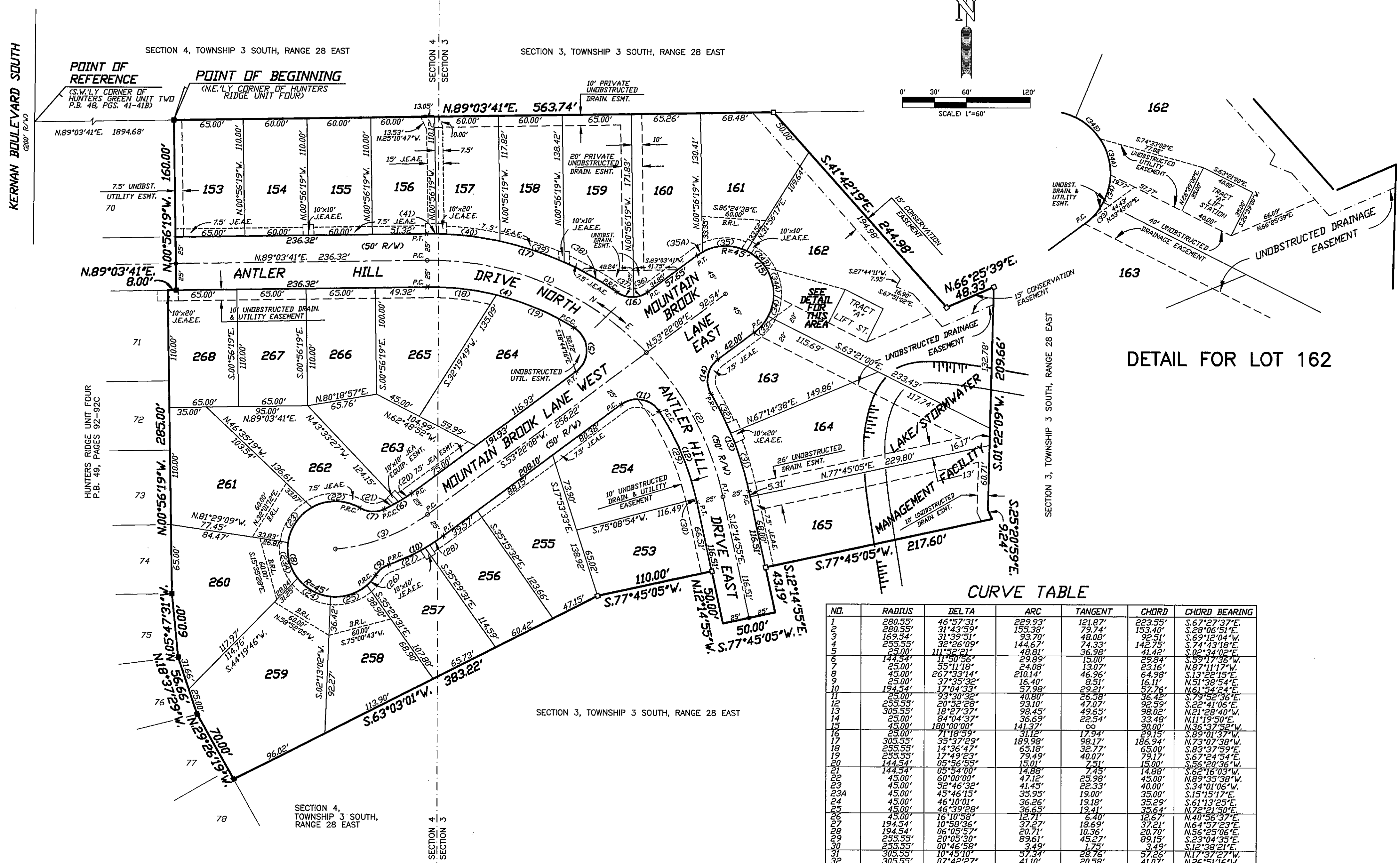


DIMENSION TABLE		
A	5'	TYPICAL 10' X 10' J.E.A. EQUIPMENT EASEMENT
B	10'	TYPICAL 10' X 20' J.E.A. EQUIPMENT EASEMENT

PREPARED BY:
ALL AMERICAN SURVEYORS, INC.
8789 SAN JOSE BLVD., SUITE 301
JACKSONVILLE, FLORIDA 32217
(904) 739-2217
PSD NO. 92-039
DEVP. NO. 1222.6

HUNTERS RIDGE UNIT FIVE

A PORTION OF SECTIONS 3 AND 4, TOWNSHIP 3 SOUTH, RANGE 28 EAST,
CITY OF JACKSONVILLE, DUVAL COUNTY, FLORIDA.



DETAIL FOR LOT 162

CURVE TABLE

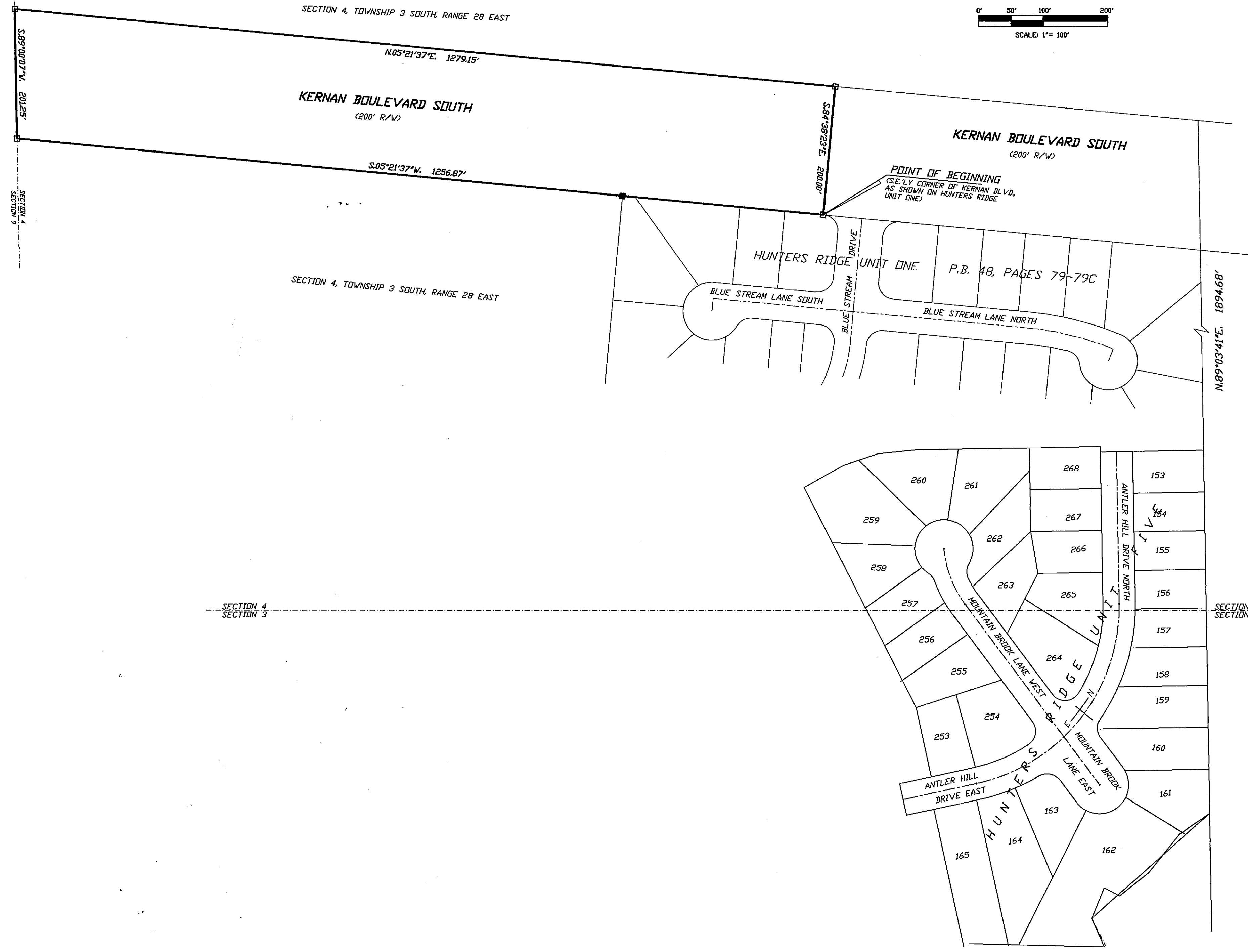
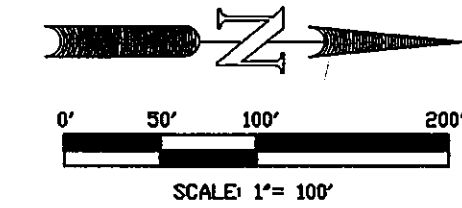
NO.	RADIUS	DELTA	ARC	TANGENT	CHORD	CHORD BEARING
1	280.55'	46°57'31"	229.93'	121.87'	223.55'	S.67°27'37"E
2	280.55'	31°43'59"	155.38'	79.74'	153.40'	S.28°06'51"E
3	169.54'	31°39'51"	93.70'	48.08'	92.51'	S.69°12'04"W
4	253.55'	32°26'09"	144.67'	74.33'	142.75'	S.74°43'18"E
5	250.00'	11°52'21"	49.81'	25.98'	41.45'	S.02°34'02"E
6	144.54'	11°50'56"	29.89'	15.00'	29.84'	S.59°47'36"W
7	25.00'	55°11'18"	24.08'	13.07'	23.16'	N.87°11'17"W
8	45.00'	26°33'14"	210.14'	46.96'	64.99'	S.13°22'15"E
9	25.00'	37°35'32"	16.40'	8.51'	16.11'	N.51°38'54"E
10	194.54'	17°04'33"	93.98'	29.21'	57.76'	N.61°54'24"E
11	25.00'	93°30'32"	40.80'	26.58'	36.42'	S.09°52'36"E
12	255.55'	20°52'28"	93.10'	47.07'	92.59'	S.22°41'06"E
13	305.55'	18°27'37"	98.45'	49.65'	98.02'	N.21°28'40"W
14	25.00'	84°04'37"	36.63'	22.54'	33.48'	N.11°18'50"E
15	45.00'	180°00'00"	141.37'	90.00'	90.00'	N.36°37'52"W
16	25.00'	71°18'59"	31.12'	17.94'	29.15'	S.89°01'37"W
17	305.55'	35°37'29"	189.98'	98.17'	186.94'	N.73°07'38"W
18	255.55'	14°36'47"	65.18'	32.77'	65.00'	S.83°37'59"E
19	255.55'	17°49'23"	79.49'	40.07'	79.17'	S.67°24'54"E
20	144.54'	05°56'55"	15.01'	7.51'	15.00'	S.56°20'36"W
21	144.54'	05°54'00"	14.88'	7.45'	14.88'	S.62°16'03"W
22	45.00'	60°00'00"	47.15'	25.98'	45.00'	N.89°35'38"W
23	45.00'	52°46'32"	41.85'	22.33'	40.00'	S.34°01'06"W
23A	45.00'	45°46'15"	35.95'	19.00'	35.00'	S.15°15'17"E
24	45.00'	46°10'01"	36.26'	19.18'	35.29'	S.61°13'25"E
25	45.00'	46°39'28"	36.65'	19.41'	35.64'	N.72°21'50"E
26	45.00'	16°10'58"	12.71'	6.40'	12.67'	N.40°56'37"E
27	194.54'	10°58'36"	37.27'	18.69'	37.21'	N.64°57'23"E
28	194.54'	06°05'57"	20.71'	10.36'	20.70'	N.56°25'06"E
29	255.55'	20°05'30"	89.61'	45.27'	89.15'	S.23°04'35"E
30	255.55'	00°46'58"	3.49'	1.75'	3.49'	S.12°38'21"E
31	305.55'	10°45'10"	37.34'	19.34'	37.25'	N.17°37'27"W
32	305.55'	07°42'27"	41.01'	20.36'	37.25'	N.26°51'16"W
33	45.00'	25°51'45"	20.31'	10.33'	20.14'	N.40°26'15"E
34	45.00'	26°17'32"	20.65'	10.51'	20.47'	N.14°21'37"E
34A	45.00'	35°11'02"	27.63'	14.27'	27.20'	N.16°22'40"W
34B	45.00'	30°03'56"	26.61'	13.99'	26.34'	N.49°00'09"W
35	45.00'	55°05'19"	43.67'	23.47'	41.62'	S.68°25'14"E
35A	45.00'	07°30'26"	5.90'	2.95'	5.89'	S.57°07'21"W
36	25.00'	33°04'09"	14.43'	7.42'	14.23'	S.69°54'13"W
37	25.00'	38°14'49"	16.38'	8.67'	16.38'	N.74°26'18"W
38	305.55'	10°43'04"	37.16'	19.34'	37.07'	S.60°40'23"E
39	305.55'	11°59'01"	31.95'	16.55'	31.54'	N.71°59'28"W
40	305.55'	11°21'42"	60.59'	30.39'	60.49'	N.83°37'50"W
41	305.55'	01°37'41"	8.68'	4.34'	8.68'	S.89°52'29"W

PREPARED BY:
ALL AMERICAN SURVEYORS, INC.
8789 SAN JOSE BLVD. SUITE 301
JACKSONVILLE, FLORIDA 32217
(904) 739-2217

HUNTERS RIDGE UNIT FIVE

A PORTION OF SECTIONS 3 AND 4, TOWNSHIP 3 SOUTH, RANGE 28 EAST,
CITY OF JACKSONVILLE, DUVAL COUNTY, FLORIDA.

SHEET 4 OF 4 SHEETS



PREPARED BY:
ALL AMERICAN SURVEYORS, INC.
8789 SAN JOSE BLVD., SUITE 301
JACKSONVILLE, FLORIDA 32217
(904) 739-2217
PSD NO. 92-039
DEVP. NO. 1222.6