

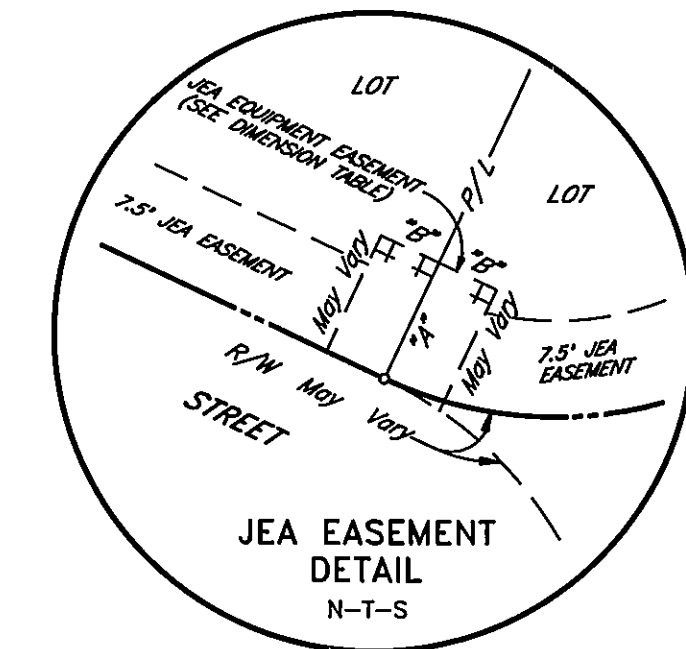
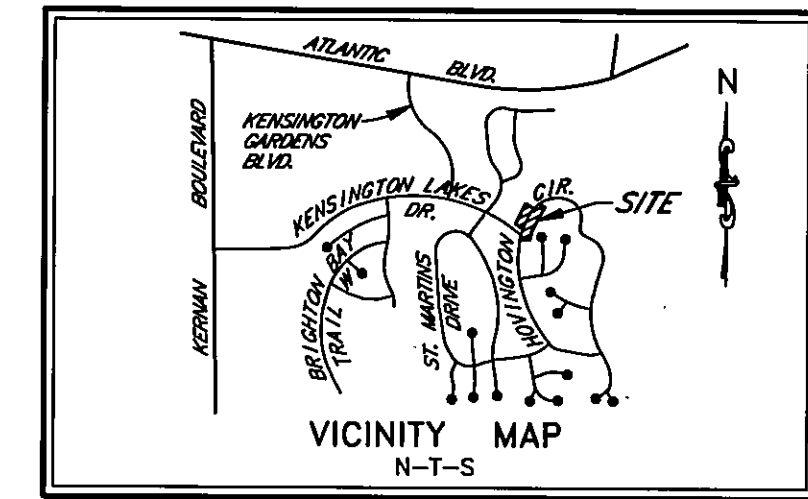
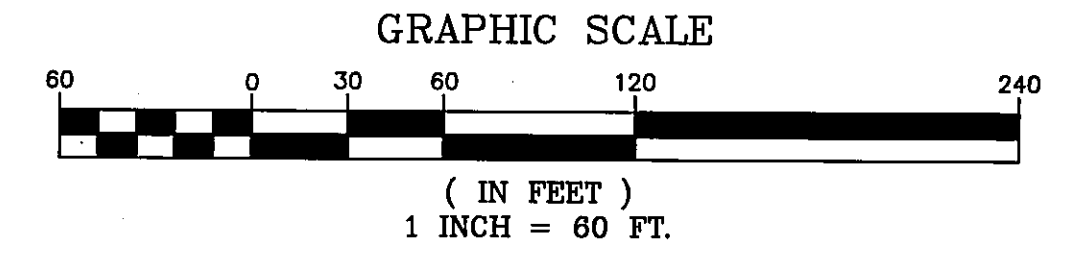


# KENSINGTON GARDENS UNIT 3E

CITY OF JACKSONVILLE DUVAL COUNTY FLORIDA  
PART OF SECTION 22 T-2-S R-28-E

PLAT BOOK 48 PAGE 2A

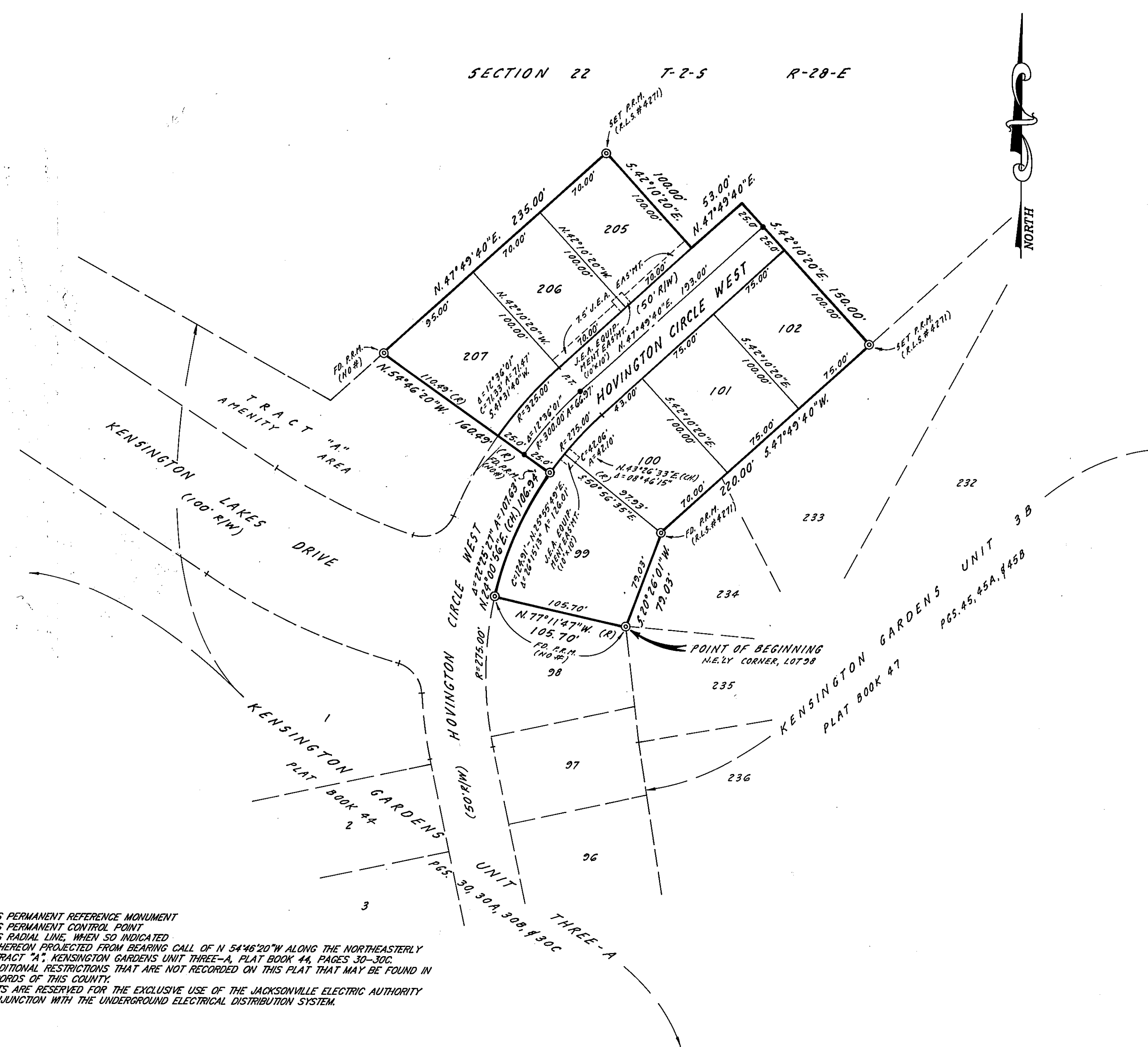
PAGE 2 OF 2 PAGES



DIMENSION TABLE		
"A"	10'	TYPICAL 10'x10' JEA EQUIPMENT EASEMENT
"B"	5'	EQUIPMENT EASEMENT
"A"	10'	TYPICAL 10'x20' JEA EQUIPMENT EASEMENT
"B"	10'	EQUIPMENT EASEMENT

### NOTES:

1. DENOTES PERMANENT REFERENCE MONUMENT
2. DENOTES PERMANENT CONTROL POINT
3. (R) DENOTES RADIAL LINE, WHEN SO INDICATED
4. BEARINGS SHOWN HEREON PROJECTED FROM BEARING CALL OF N 54°46'20"W ALONG THE NORTHEASTERLY BOUNDARY OF TRACT "A", KENSINGTON GARDENS UNIT THREE-A, PLAT BOOK 44, PAGES 30-30C.
5. THERE MAY BE ADDITIONAL RESTRICTIONS THAT ARE NOT RECORDED ON THIS PLAT THAT MAY BE FOUND IN THE PUBLIC RECORDS OF THIS COUNTY.
6. CERTAIN EASEMENTS ARE RESERVED FOR THE EXCLUSIVE USE OF THE JACKSONVILLE ELECTRIC AUTHORITY FOR USE IN CONJUNCTION WITH THE UNDERGROUND ELECTRICAL DISTRIBUTION SYSTEM.



PREPARED BY:  
**SUNSHINE STATE SURVEYORS, INC.**  
3131 ST. JOHNS BLUFF ROAD SOUTH  
JACKSONVILLE, FL 32216 (904) 642-8550