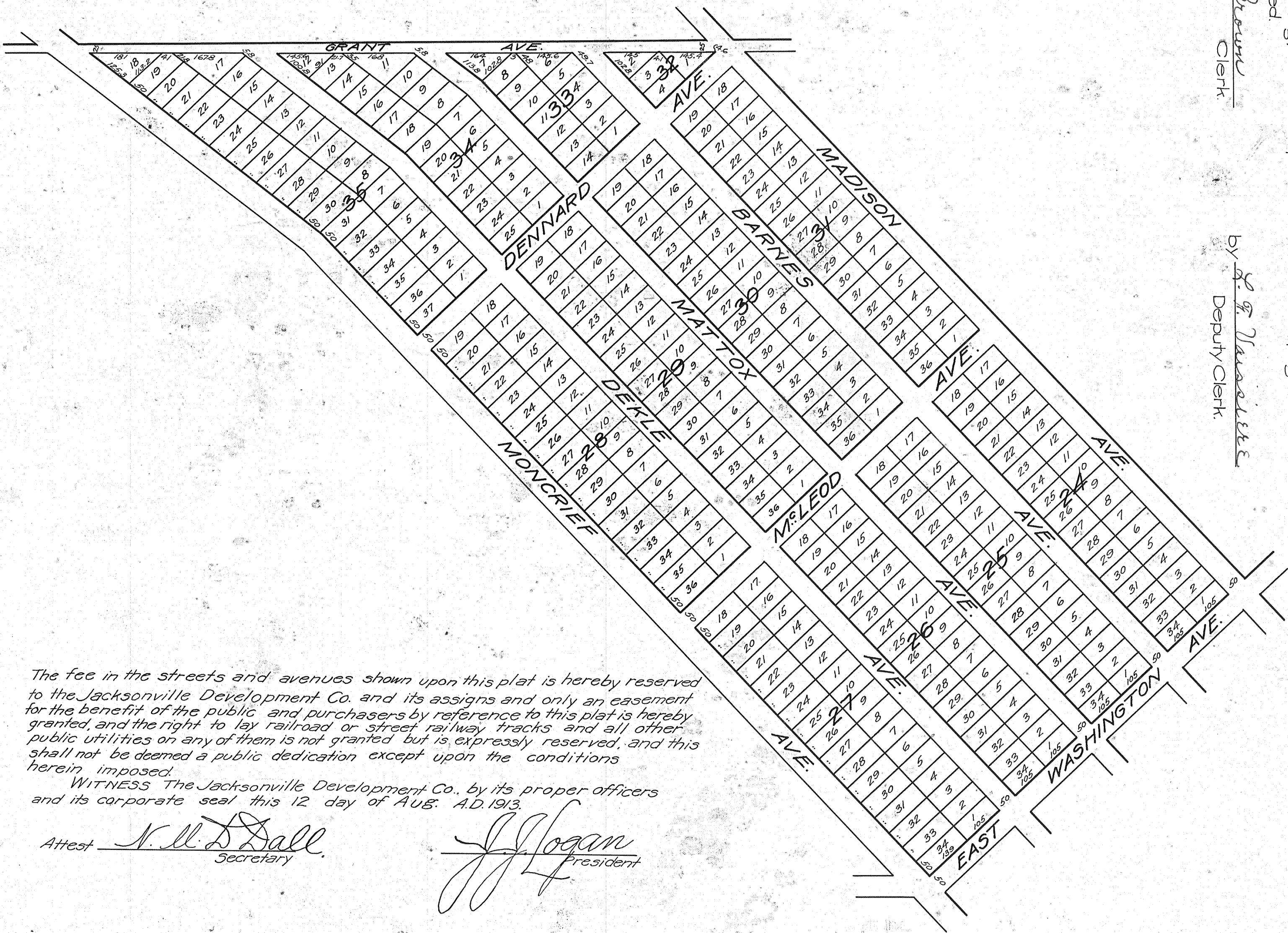


Plat No. 2.
LINCOLN VILLAS
 A SUBDIVISION OF BLOCK F LINCOLN FARMS
 As recorded in plat book 4 page 96 Public Records of Duval Co., Fla.
 Scale 1 in. = 200 ft.

Ellis, Curtis & Hooker
 Civil Engineers & Surveyors
 Jacksonville, Fla.

Filed and recorded in the Public Records of Duval County, Florida
 this 14th day of Aug. A.D. 1913, in plat book number 5, page 84.
 Record Verified
 Frank Brown
 Clerk
 by L. F. Vaisiere
 Deputy Clerk



The fee in the streets and avenues shown upon this plat is hereby reserved to the Jacksonville Development Co. and its assigns and only an easement for the benefit of the public and purchasers by reference to this plat is hereby granted and the right to lay railroad or street railway tracks and all other public utilities on any of them is not granted but is expressly reserved, and this shall not be deemed a public dedication except upon the conditions herein imposed.

WITNESS The Jacksonville Development Co., by its proper officers and its corporate seal this 12 day of Aug. A.D. 1913.

Attest N. M. D. Dall
 Secretary

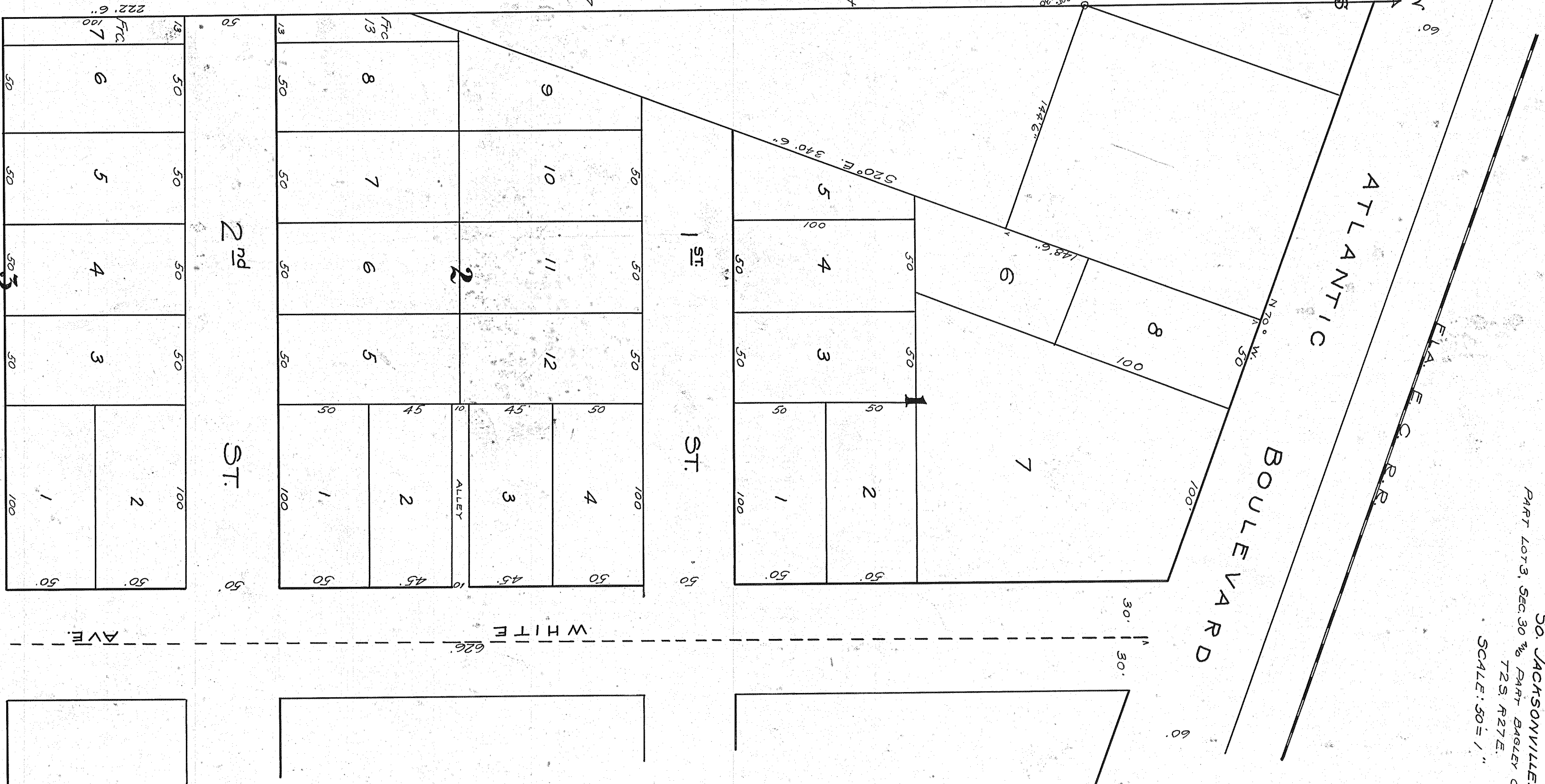
J. J. Logan
 President

Filed and recorded in the Public Records of Duval County, Florida
 this 9th day of Aug. A.D. 1913, in plat book number 5, page 84.
 Record Verified.

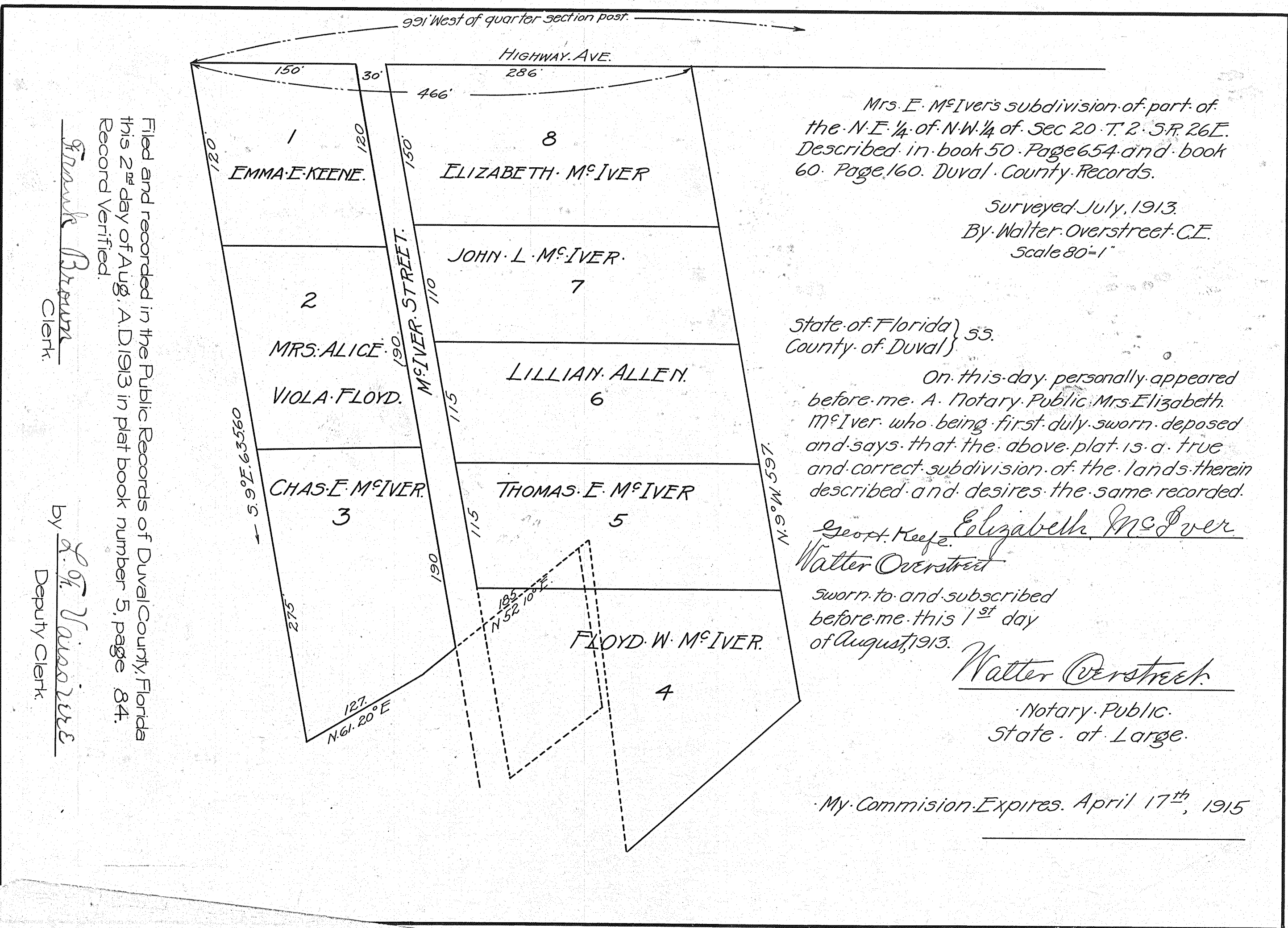
Frank Brown
 Clerk

by L. F. Vaisiere
 Deputy Clerk

Before me an officer
 duly qualified to administer
 oaths both personally appea-
 red before me J. F. White &
 S. D. Miller who being duly
 sworn depose & say that
 this plat is a true & correct
 survey of the lands in Lot
 3, Sec. 30 T. 25. N. 2 E. & part
 of Bayley Grant T. 25. N. 2 E.
J. F. White
 Samuel D. Miller
 Subscribed & sworn to this
 9th day Aug. 1913.
R. P. Bell
 Notary Public
 My Com. expires 7-2-1917



PLAT OF
 MILLERS ADDITION
 50 JACKSONVILLE
 PART LOT 3, SEC. 30 T. 25. N. 2 E. & PART BAYLEY GRANT
 SCALE: 50' = 1"



Mrs. E. McIver's subdivision of part of
 the N.E. 1/4 of N.W. 1/4 of Sec. 20 T. 2. 5 R. 26 E.
 Described in book 50 Page 654 and book
 60 Page 160. Duval County Records.

Surveyed July, 1913.
 By Walter Overstreet, C.E.
 Scale 80'-1"

State of Florida) ss.
 County of Duval)

On this day personally appeared
 before me, A. Notary Public, Mrs. Elizabeth
 McIver who being first duly sworn, depose
 and says that the above plat is a true
 and correct subdivision of the lands therein
 described and desires the same recorded.

Elizabeth McIver
Walter Overstreet

Sworn to and subscribed
 before me this 1st day
 of August, 1913.

Walter Overstreet
 Notary Public,
 State at Large.

My Commission Expires April 17th, 1915

Filed and recorded in the Public Records of Duval County, Florida
 this 2nd day of Aug. A.D. 1913 in plat book number 5, page 84.
 Record Verified.

Frank Brown
 Clerk

by L. F. Vaisiere
 Deputy Clerk