

AMELIA VIEW UNIT ONE

A parcel of land, being a portion of The Moses Harrold Grant, Sections 46 and 47, together with a portion of The F.M. Arredondo Grant, Section 39, and a portion of Lot 1, Section 13, all in Township 1 North, Range 27 East, City of Jacksonville, Duval County, Florida.

AMELIA VIEW UNIT ONE

A parcel of land, being a portion of The Moses Harrold Grant, Sections 46 and 47, together with a portion of The F.M. Arredondo Grant, Section 39, and a portion of Lot 1, Section 13, all in Township 1 North, Range 27 East, City of Jacksonville, Duval County, Florida, said parcel of land being more particularly described as follows:

For a Point of Reference, COMMENCE at the intersection of the Westerly Right of Way line of EDWARDS CREEK ROAD, (a 60 foot Public Road Right of Way, as presently established), with the Northerly Right of Way line of STARRAT ROAD, (a 60 foot Public Road Right of Way, as presently established), and run North 84°56'29" West, along said Northerly Right of Way line of STARRAT ROAD, a distance of 1,172.94 feet, to the POINT OF BEGINNING.

From the POINT OF BEGINNING thus described, and departing from said Northerly Right of Way line of STARRAT ROAD, run North 05°04'25" East, a distance of 199.43 feet, to a point; run thence North 04°33'48" West, a distance of 60.90 feet, to a point; run thence North 05°00'06" East, a distance of 199.06 feet, to a point; run thence North 84°59'54" West, a distance of 525.81 feet, to a point; run thence North 20°52'10" East, a distance of 10.83 feet, to the Point of Curvature, of a Non-Tangent curve leading Northeasterly, thence Northeasterly, along and around the arc of a curve, concave Southeasterly, and having a radius of 427.02 feet, through a central angle of 08°05'56" to the right, an arc distance of 60.36 feet, to the Point of Compound Curvature, of a Non-Tangent curve leading Northeasterly, last said arc being subtended by a chord bearing and distance of North 20°29'30" East, 60.31 feet; run thence Northeasterly, along and around the arc of a curve, concave Southeasterly, and having a radius of 305.76 feet, through a central angle of 13°01'02" to the right, an arc distance of 69.47 feet, last said arc being subtended by a chord bearing and distance of North 27°32'54" E., 69.32 feet; run thence North 37°54'21" East, a distance of 169.89 feet, to the Point of Curvature, of a curve leading Southeasterly, thence Southeasterly, along and around the arc of a curve, concave Southerly, having a radius of 30.00 feet, through a central angle of 90°00'00" to the right, an arc distance of 47.12 feet, to a point, last said arc being subtended by a chord bearing and distance of North 83°17'01" East, 42.43 feet; run thence North 38°17'01" East, a distance of 60.00 feet, to a point on the arc of a curve, leading Northerly, thence Northerly, along and around the arc of a curve, concave Easterly, having a radius of 30.00 feet, through a central angle of 90°00'00" to the right, an arc distance of 47.12 feet, to the Point of Tangency of last said curve, said arc being subtended by a chord bearing and distance of North 06°42'59" West, 42.43 feet; run thence North 38°17'01" East, along last said tangency, a distance of 498.49 feet, to a point; run thence South 72°20'19" East, a distance of 213.62 feet, to a point; run thence North 36°26'41" East, a distance of 232.37 feet, to a point; run thence North 17°40'00" East, a distance of 659.41 feet, to a point; run thence North 13°26'12" East, a distance of 121.47 feet, to a point; run thence North 02°15'48" West, a distance of 94.63 feet, to a point; run thence South 72°20'00" East, a distance of 501.15 feet, to a point, hereinafter referred to as REFERENCE POINT "A"; from the aforesaid REFERENCE POINT "A", return to the aforesaid REFERENCE POINT OF BEGINNING.

From the POINT OF BEGINNING, continue along the Northerly Right of Way line of STARRAT ROAD, the following three (3) courses and distances: Course No. 1: North 84°56'29" West, a distance of 728.19 feet, to the Point of Curvature, of a curve leading Westerly; Course No. 2: thence Westerly, along and around the arc of a curve, concave Southerly, having a radius of 1,942.78 feet, through a central angle of 08°22'18" to the left, an arc distance of 283.87 feet, to the Point of Tangency of last said curve, last said arc being subtended by a chord bearing and distance of North 89°07'38" West, 283.61 feet; Course No. 3: thence South 86°41'13" West, along last said tangency, a distance of 348.36 feet, to a point, on the West line of Lot 1, Section 13, Township 1 North, Range 27 East; run thence North 00°36'35" West, along last said line, a distance of 80.13 feet, to the Northwest corner of said Lot 1, Section 13; run thence North 85°14'16" West, along the North line of said Section 13, (also being the South line of The Moses Harrold Grant, Section 47), a distance of 330.53 feet, to a point; run thence North 40°39'36" East, a distance of 75.50 feet, to a point; run thence North 81°21'09" East, a distance of 103.23 feet, to a point; run thence North 08°35'26" West, a distance of 343.79 feet, to a point; run thence North 70°48'54" East, a distance of 700.33 feet, to a point; run thence North 00°44'11" West, a distance of 692.91 feet, to a point; run thence North 74°02'41" West, a distance of 213.06 feet, to a point; run thence North 26°59'03" West, a distance of 668.39 feet, to a point; run thence North 65°21'50" East, a distance of 321.90 feet, to a point; run thence South 24°38'10" East, a distance of 137.97 feet, to the Point of Curvature, of a curve leading Southeasterly, thence Southeasterly, along and around the arc of a curve, concave Northeasterly, and having a radius of 500.00 feet, through a central angle of 11°25'21" to the left, an arc distance of 99.68 feet, to a point, last said arc being subtended by a chord bearing and distance of South 30°20'50" East, 99.51 feet; run thence North 69°28'03" East, a distance of 226.76 feet, to a point; run thence South 83°48'38" East, a distance of 343.02 feet, to a point; run thence South 25°47'41" East, a distance of 172.26 feet, to a point; run thence South 22°04'02" West, a distance of 24.33 feet to a point; run thence South 66°09'21" East, a distance of 228.54 feet, to a point; run thence South 80°16'00" East, a distance of 60.58 feet, to a point; run thence South 72°20'00" East, a distance of 200.00 feet, to a point; run thence North 18°02'26" East, a distance of 614.78 feet, to a point; run thence North 27°14'00" East, a distance of 94.77 feet, to a point; run thence North 73°28'24" West, a distance of 171.05 feet, to a point; run thence South 68°27'47" West, a distance of 340.67 feet, to a point; run thence North 22°51'32" West, a distance of 9.73 feet, to a point; run thence South 80°53'49" West, a distance of 220.51 feet, to a point; run thence North 29°12'56" West, a distance of 139.72 feet, to a point; run thence North 06°37'03" East, a distance of 64.10 feet, to a point; run thence North 22°53'04" West, a distance of 530 feet, more or less, to a point on the Mean High Water Line on the Southern shores of SAMPLES CREEK; run thence Easterly, along the Mean High Water Line on the Southern shores of SAMPLES CREEK, and then along the Mean High Water Line on the Southern shores of STARRAT CREEK, (also known as EDWARDS CREEK, a distance of 2,415 feet, to a point on the Mean High Water Line of said STARRAT CREEK, (also known as EDWARDS CREEK), said point bears North 17°40'00" East, a distance of 259 feet, more or less, from the aforesaid REFERENCE POINT "A"; run thence South 17°40'00" West, a distance of 259 feet, more or less, to said REFERENCE POINT "A", and to close.

The lands thus described, contains 87.9 Acres, more or less, in Area.

SURVEYOR'S CERTIFICATE:

THIS IS TO CERTIFY THAT THIS PLAT IS A CORRECT REPRESENTATION OF THE LANDS SURVEYED, PLATTED AND DESCRIBED IN THE CAPTION, THAT THE SURVEY WAS MADE UNDER THE UNDERSIGNED'S RESPONSIBLE DIRECTION AND SUPERVISION, THAT THE SURVEY DATA COMPLIES WITH ALL THE REQUIREMENTS OF FLORIDA STATUTE 177, THAT PERMANENT REFERENCE MONUMENTS (PRM), PERMANENT CONTROL POINTS (PCP), AND LOT CORNERS HAVE BEEN OR WILL BE MONUMENTED IN ACCORDANCE WITH CHAPTER 177.091, FLORIDA STATUTES, CHAPTER 61G17-6.003, FLORIDA ADMINISTRATIVE CODE, AND SECTION 654.110, ORDINANCE CODE OF THE CITY OF JACKSONVILLE, FLORIDA.

CERTIFIED THIS 28th DAY OF May, A.D., 2001. JONATHAN B. BOWMAN, FLORIDA REGISTERED LAND SURVEYOR No. 4600

APPROVED FOR THE RECORD:

THIS IS TO CERTIFY THAT MARSH CREEK NORTH, LLC, A FLORIDA LIMITED LIABILITY COMPANY UNDER THE LAWS OF THE STATE OF FLORIDA; CHRISTEN CORPORATION, A FLORIDA CORPORATION, UNDER THE LAWS OF THE STATE OF FLORIDA; AND ROGER M. O'STEEN, INDIVIDUALLY, AS TO NON-HOMESTEAD PROPERTY; AND SEABROOK HOMES, INC. A FLORIDA CORPORATION, ARE THE LAWFUL OWNERS OF THE LANDS DESCRIBED IN THE CAPTION HEREON, KNOWN AS AMELIA VIEW UNIT ONE AND THAT CITRUS BANK AND TUCKER FEDERAL BANK, doing business as FAIRFIELD MORTGAGE, ARE THE HOLDERS OF THE MORTGAGES ON SAID LANDS, HAVING CAUSED THE SAME TO BE SURVEYED AND SUBDIVIDED. THIS PLAT BEING MADE IN ACCORDANCE WITH SAID SURVEY IS HEREBY ADOPTED AS A TRUE AND CORRECT PLAT OF THOSE LANDS. ALL ROADS, PARKWAYS, LANES, COURTS, WALKWAYS, DRAINAGE EASEMENTS, NON ACCESS EASEMENTS, AND UNOBSTRUCTED DRAINAGE EASEMENTS; EXCEPT TRACT'S "B-1", & "B-2" (LANDSCAPING AND SIGNAGE, TRACT'S "C-1", "C-2", & "C-3" (WETLAND CONSERVATION AREA), TRACT "E" (RECREATIONAL AREA), AND TRACT "F" (STORMWATER MANAGEMENT FACILITY), WHICH SHALL REMAIN PRIVATELY OWNED AND THE SOLE EXCLUSIVE PROPERTY OF THE OWNER, ITS SUCCESSORS AND ASSIGNS; AND EXCEPT JEA-E AND JEA-EE EASEMENTS, ARE HEREBY IRREVOCABLY AND WITHOUT RESERVATION DEDICATED TO THE CITY OF JACKSONVILLE, ITS SUCCESSORS AND ASSIGNS. THE DRAINAGE EASEMENTS OVER, UNDER, ACROSS AND THROUGH THE LAKE/STORMWATER MANAGEMENT FACILITIES AS SHOWN ON THIS PLAT ARE HEREBY IRREVOCABLY DEDICATED TO THE CITY OF JACKSONVILLE, ITS SUCCESSORS AND ASSIGNS, AND ARE SUBJECT TO THE FOLLOWING COVENANTS WHICH SHALL RUN WITH THE LAND:

1) THE DRAINAGE EASEMENTS HEREBY DEDICATED SHALL PERMIT THE CITY OF JACKSONVILLE, ITS SUCCESSORS AND ASSIGNS TO DISCHARGE INTO SAID LAKE/STORMWATER MANAGEMENT FACILITIES WHICH THESE EASEMENTS TRAVERSE, ALL WATER WHICH MAY FALL ON OR COME UPON ALL (ROADS, PARKWAYS, LANES AND COURTS AS NOTED ABOVE) HEREBY DEDICATED, TOGETHER WITH ALL SUBSTANCES OR MATTER WHICH MAY FLOW OR PASS FROM (ROADS, PARKWAYS, LANES AND COURTS); FROM ADJACENT LAND OR FROM ANY OTHER SOURCE OF PUBLIC WATERS INTO OR THROUGH SAID LAKE/STORMWATER MANAGEMENT FACILITIES, WITHOUT ANY LIABILITY WHATSOEVER ON THE PART OF THE CITY OF JACKSONVILLE, ITS SUCCESSORS AND ASSIGNS FOR ANY DAMAGE, INJURIES OR LOSS TO PERSONS OR PROPERTY RESULTING FROM THE ACCEPTANCE OR USE OF THESE DRAINAGE EASEMENTS BY THE CITY OF JACKSONVILLE, ITS SUCCESSORS AND ASSIGNS.

2) THE LAKE/STORMWATER MANAGEMENT FACILITIES SHOWN ON THIS PLAT ARE OWNED IN FEE SIMPLE TITLE BY THE ABUTTING OWNERS, THEIR SUCCESSORS AND ASSIGNS, AND ALL MAINTENANCE AND ANY OTHER MATTERS PERTAINING TO SAID LAKE/STORMWATER MANAGEMENT FACILITIES ARE THE RESPONSIBILITY OF THE OWNERS, THEIR SUCCESSORS AND ASSIGNS. THE CITY OF JACKSONVILLE BY ACCEPTANCE OF THIS PLAT ASSUMES NO RESPONSIBILITY WHATSOEVER FOR SAID LAKE/STORMWATER MANAGEMENT FACILITIES.

3) THE CITY OF JACKSONVILLE, ITS SUCCESSORS AND ASSIGNS, SHALL NOT BE LIABLE NOR RESPONSIBLE FOR THE CREATION, OPERATION, FAILURE OR DESTRUCTION OF WATER LEVEL CONTROL EQUIPMENT WHICH MAY BE CONSTRUCTED OR INSTALLED BY THE DEVELOPER OR ANY OTHER PERSON WITHIN THE AREA OF THE LANDS HEREBY PLATTED, OR OF THE LAKE/STORMWATER MANAGEMENT FACILITIES SHOWN ON THIS PLAT, BUT SHALL HAVE THE RIGHT TO MODIFY THE WATER LEVEL INCLUDING THE REPAIR, REMOVAL OR REPLACEMENT OF THE LAKE/STORMWATER MANAGEMENT FACILITIES AND THE CONTROL STRUCTURES TO EFFECT ADEQUATE DRAINAGE.

THE OWNER, ITS SUCCESSORS AND ASSIGNS OF THE LANDS DESCRIBED AND CAPTIONED HEREON, SHALL INDEMNIFY THE CITY OF JACKSONVILLE AND SAVE IT HARMLESS FROM SUITS, ACTION, DAMAGES AND LIABILITY AND EXPENSE IN CONNECTION WITH LOSS OF LIFE, BODILY OR PERSONAL INJURY OR PROPERTY DAMAGE OR ANY OTHER DAMAGE ARISING FROM OR OUT OF ANY OCCURRENCE IN, UPON, AT OR FROM THE LAKE/STORMWATER MANAGEMENT FACILITIES DESCRIBED ABOVE, OR ANY PART THEREOF, OCCASIONED WHOLLY OR IN PART BY ANY ACT OF OMISSION OF ITS AGENT, CONTRACTORS, EMPLOYEES, SERVANTS, LICENSEES OR CONCESSIONAIRES WITHIN AMELIA VIEW UNIT ONE THIS INDEMNIFICATION SHALL RUN WITH THE LAND AND THE SUCCESSORS AND ASSIGNS OF THE OWNER AND SHALL BE SUBJECT TO IT.

THE UNDERSIGNED OWNER DOES HEREBY RESERVE UNTO THEMSELVES AND ASSIGNS AN EASEMENT FOR LANDSCAPING AND CONSTRUCTION OF SIGNS OVER ALL NON-ACCESS EASEMENTS, AND ALSO OVER ALL OF THE LANDS DESIGNATED AS PRIVATE DRAINAGE EASEMENTS SHOWN ON THIS PLAT, THE MAINTENANCE RESPONSIBILITIES OF WHICH SHALL BE THOSE OF THE OWNERS, THEIR SUCCESSORS AND ASSIGNS.

THOSE EASEMENTS DESIGNATED AS "JEA-E.E.", ARE HEREBY IRREVOCABLY DEDICATED TO THE JEA, ITS SUCCESSORS AND ASSIGNS, FOR ITS EXCLUSIVE USE IN CONJUNCTION WITH ITS UNDERGROUND ELECTRICAL SYSTEM.

THOSE EASEMENTS DESIGNATED AS "JEA-E." ARE HEREBY IRREVOCABLY DEDICATED TO THE JEA, ITS SUCCESSORS AND ASSIGNS, FOR ITS NON-EXCLUSIVE USE IN CONJUNCTION WITH ITS UNDERGROUND ELECTRICAL SYSTEM; PROVIDED HOWEVER, THAT NO PARALLEL UTILITIES MAY BE INSTALLED WITHIN SAID EASEMENTS.

TRACT "D" (LIFT STATION) IS HEREBY IRREVOCABLY DEDICATED TO THE JEA, ITS SUCCESSORS AND ASSIGNS, FOR ITS NON-EXCLUSIVE USE IN CONJUNCTION WITH ITS WATER AND SEWER SYSTEMS.

WATER AND SEWER UTILITIES WITHIN ROADS AND UNOBSTRUCTED JEA UTILITY EASEMENTS ARE HEREBY DEDICATED TO JEA.

ALL PLATTED UTILITY EASEMENTS SHALL PROVIDE THAT SUCH EASEMENTS ALSO BE EASEMENTS FOR THE CONSTRUCTION, INSTALLATION, MAINTENANCE, AND OPERATION OF CABLE TELEVISION SERVICES; PROVIDED, HOWEVER, NO SUCH CONSTRUCTION, INSTALLATION, MAINTENANCE, AND OPERATION OF CABLE TELEVISION SERVICES SHALL INTERFERE WITH THE FACILITIES AND SERVICES OF AN ELECTRIC, TELEPHONE, GAS, OR OTHER PUBLIC UTILITY. IN THE EVENT A CABLE TELEVISION COMPANY DAMAGES THE FACILITIES OF A PUBLIC UTILITY, IT SHALL BE SOLELY RESPONSIBLE FOR THE DAMAGES. THIS SECTION SHALL NOT APPLY TO THOSE PRIVATE EASEMENTS GRANTED TO OR OBTAINED BY A PARTICULAR ELECTRIC, TELEPHONE, GAS OR OTHER PUBLIC UTILITY. SUCH CONSTRUCTION, INSTALLATION, MAINTENANCE, AND OPERATION SHALL COMPLY WITH THE NATIONAL ELECTRICAL SAFETY CODE AS ADOPTED BY THE FLORIDA PUBLIC SERVICE COMMISSION. Florida Statutes 177.091(28)

IN WITNESS WHEREOF, THE ABOVE MARSH CREEK NORTH, LLC, A FLORIDA LIMITED LIABILITY COMPANY, CHRISTEN CORPORATION, A FLORIDA CORPORATION, ROGER M. O'STEEN, INDIVIDUALLY, AS TO NON-HOMESTEAD PROPERTY, AND SEABROOK HOMES, INC. A FLORIDA CORPORATION AND TUCKER FEDERAL BANK, doing business as FAIRFIELD MORTGAGE, AND CITRUS BANK, HAVE CAUSED THESE PRESENTS TO BE SIGNED THIS 4TH DAY OF MAY, A.D. 2001.

MARSH CREEK NORTH, LLC A Florida Limited Liability Company

WITNESS: Taylor Bush

PRINT NAME: Taylor Bush

WITNESS: Denise Wallace

PRINT NAME: DENISE WALLACE

Michael E. Braren, Its Sole Member MARSH CREEK NORTH, LLC A Florida Limited Liability Company

NOTARY FOR MARSH CREEK NORTH, LLC, A Florida Limited Liability Company STATE OF FLORIDA COUNTY OF DUVAL

THE FOREGOING INSTRUMENT WAS ACKNOWLEDGED BEFORE ME THIS 4th DAY OF May, A.D., 2001 BY MICHAEL E. BRAREN, THE SOLE MEMBER OF MARSH CREEK NORTH, LLC, A FLORIDA LIMITED LIABILITY COMPANY ON BEHALF OF THE LIMITED LIABILITY COMPANY WHO IS PERSONALLY KNOWN TO ME AND NO OATH WAS TAKEN.

Sherry Hico NOTARY PUBLIC, STATE OF FLORIDA AT LARGE MY COMMISSION # CC098723 EXPIRES March 30, 2004

TUCKER FEDERAL BANK, doing business as FAIRFIELD MORTGAGE A National Savings and Loan Association

WITNESS: Jennifer L. Hardin

PRINT NAME: JENNIFER L. HARDIN

WITNESS: Barbara S. Walker

PRINT NAME: BARBARA S. WALKER

NOTARY FOR TUCKER FEDERAL BANK, doing business as FAIRFIELD MORTGAGE STATE OF FLORIDA COUNTY OF DUVAL

THE FOREGOING INSTRUMENT WAS ACKNOWLEDGED BEFORE ME THIS 4th DAY OF May, A.D., 2001 BY JIM S. LITTLE, ASST VICE PRESIDENT, OF TUCKER FEDERAL BANK, doing business as FAIRFIELD MORTGAGE, a NATIONAL SAVINGS AND LOAN ASSOCIATION, WHO IS PERSONALLY KNOWN TO ME AND NO OATH WAS TAKEN.

Sherry Hico NOTARY PUBLIC, STATE OF FLORIDA AT LARGE MY COMMISSION # CC098723 EXPIRES March 30, 2004

APPROVED FOR THE RECORD:

THIS IS TO CERTIFY THAT THIS PLAT HAS BEEN EXAMINED, ACCEPTED AND APPROVED BY THE CITY OF JACKSONVILLE, DUVAL COUNTY, FLORIDA, PURSUANT TO CHAPTER 654, ORDINANCE CODE.

THIS 22ND DAY OF June, A.D., 2001.

Jim Fuller DIRECTOR OF PUBLIC WORKS June 22, 2001 DATE

CLERK'S CERTIFICATE: # 200115732

THIS IS TO CERTIFY THAT THIS PLAT HAS BEEN EXAMINED AND APPROVED BY THE CITY OF JACKSONVILLE, FLORIDA AND SUBMITTED TO ME FOR RECORDING, AND IS RECORDED IN PLAT BOOK 54 PAGES 37 thru 37-K OF THE CURRENT PUBLIC RECORDS OF DUVAL COUNTY, FLORIDA.

SIGNED THIS 22 DAY OF June, A.D. 2001

BY: Jim Fuller CLERK: JIM FULLER Deputy Clerk

PLAT CONFORMITY REVIEW:

THIS PLAT HAS BEEN REVIEWED AND FOUND TO BE IN COMPLIANCE WITH PART 1, CHAPTER 177, FLORIDA STATUTES, THIS 12th DAY OF June, A.D., 2001.

Glenn E. McGregor, PLS PROFESSIONAL LAND SURVEYOR No. 4252

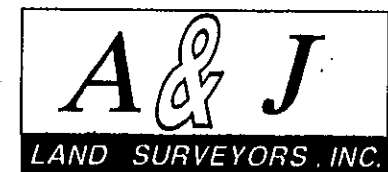
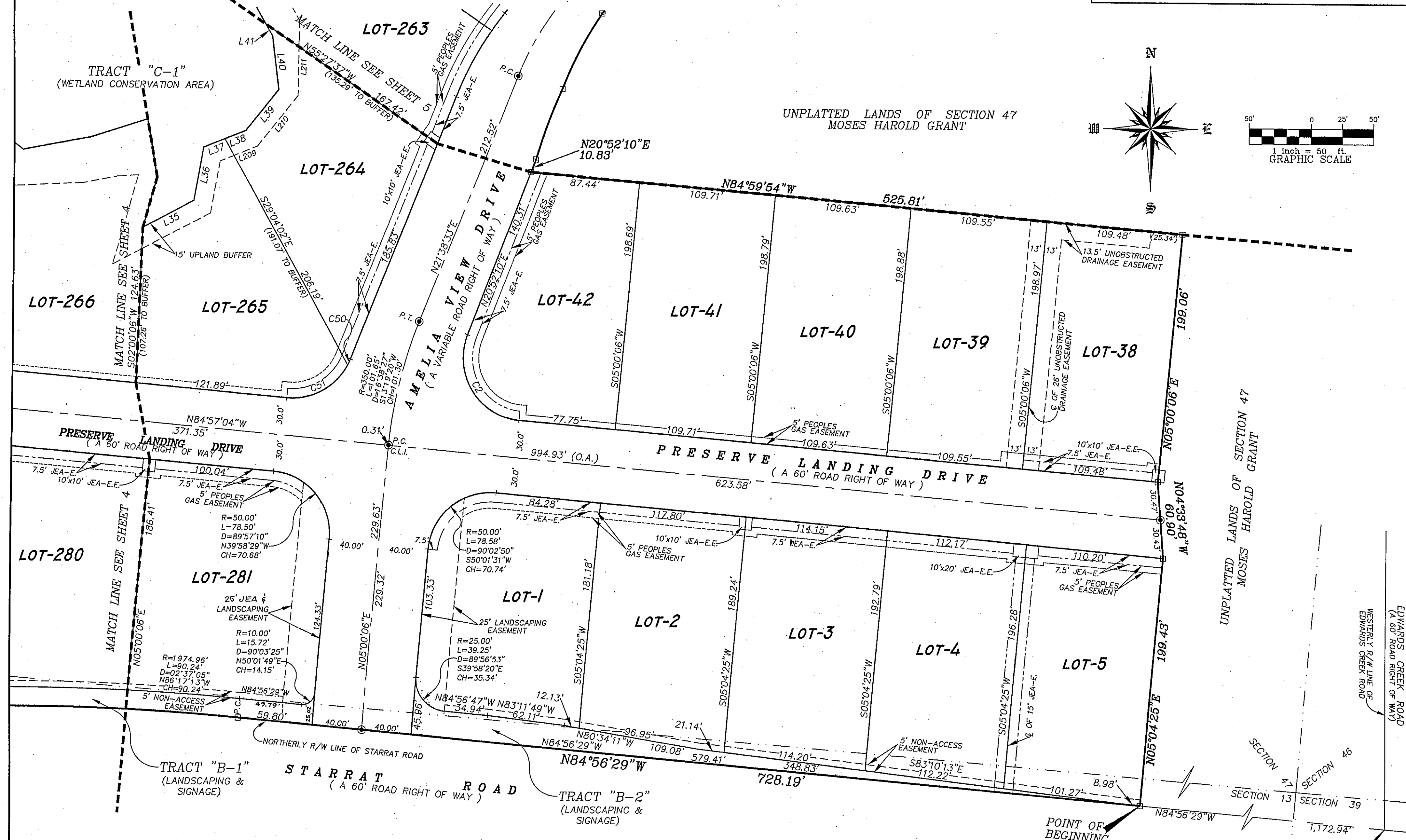
Professional Land Surveyors 7960 Belfort Parkway, Suite 1600 Jacksonville, Florida 32266 Fax (904) 298-4583 Phone (904) 298-1666 L.B. No. 6661 City Development Number: 3989.3 PSD Number: 98-030



AMELIA VIEW UNIT ONE
 A parcel of land, being a portion of The Moses Harold Grant, Sections 46 and 47, together with a portion of The F.M. Arredondo Grant, Section 39, and a portion of Lot 1, Section 13, all in Township 1 North, Range 27 East, City of Jacksonville, Duval County, Florida.

PLAT BOOK 54 PAGE 37-B

SHEET THREE (3) OF (12) TWELVE



Professional Land Surveyors
 7950 Belfort Parkway, Suite 1600
 Jacksonville, Florida 32256
 Fax (904) 296-4583
 Phone (904) 296-1666 L.B. No. 6661

| CURVE DATA | | | | | | |
|------------|--------|----------|---------------|----------------|---------|---------------|
| CURVE | LENGTH | RADIUS | CHORD BEARING | CHORD DISTANCE | TANGENT | CENTRAL ANGLE |
| C1 | 78.58' | 50.00' | S50°01'31"W | 70.74' | 50.04' | 90°02'50" |
| C2 | 92.35' | 50.00' | S32°02'27"E | 79.77' | 66.14' | 105°49'14" |
| C50 | 5.36' | 50.00' | N24°42'44"E | 5.36' | 2.68' | 06°08'22" |
| C51 | 58.70' | 50.00' | N61°22'57"E | 55.39' | 33.28' | 67°16'01" |
| C56 | 78.50' | 50.00' | N39°58'29"W | 70.68' | 49.96' | 89°58'29" |
| C57 | 90.24' | 1974.96' | N86°17'13"W | 90.24' | 45.13' | 02°37'05" |
| C74 | 15.72' | 10.00' | N50°01'49"E | 14.15' | 10.01' | 90°03'25" |
| C75 | 7.87' | 5.00' | S40°06'44"E | 7.09' | 5.02' | 90°13'39" |

| LINE TABLE | | |
|------------|---------------|---------|
| LINE | CHORD BEARING | BEARING |
| L35 | S61°44'42"W | 46.32' |
| L36 | N10°09'25"E | 43.27' |
| L37 | N67°57'47"E | 18.44' |
| L38 | N67°57'47"E | 18.10' |
| L39 | N38°47'31"E | 42.03' |
| L40 | N06°28'03"W | 43.94' |
| L41 | N29°25'57"W | 10.43' |
| L209 | N67°57'47"E | 20.16' |
| L210 | N38°47'31"E | 52.19' |
| L211 | N01°09'02"E | 39.06' |

AMELIA VIEW UNIT ONE

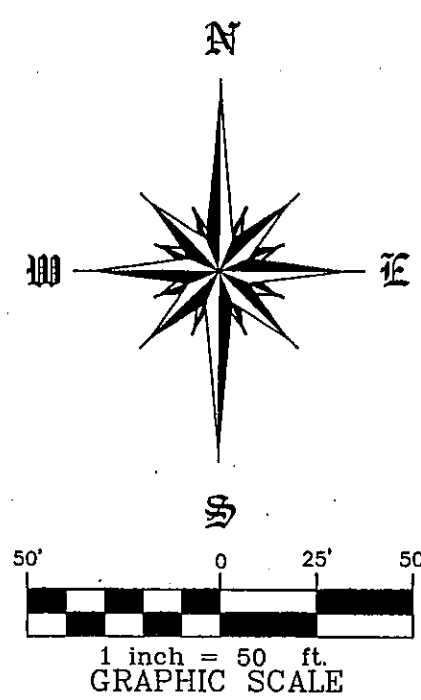
A parcel of land, being a portion of The Moses Harold Grant, Sections 46 and 47, together with a portion of The F.M. Arredondo Grant, Section 39, and a portion of Lot 1, Section 13, all in Township 1 North, Range 27 East, City of Jacksonville, Duval County, Florida.

MATCH LINE SEE SHEET 5

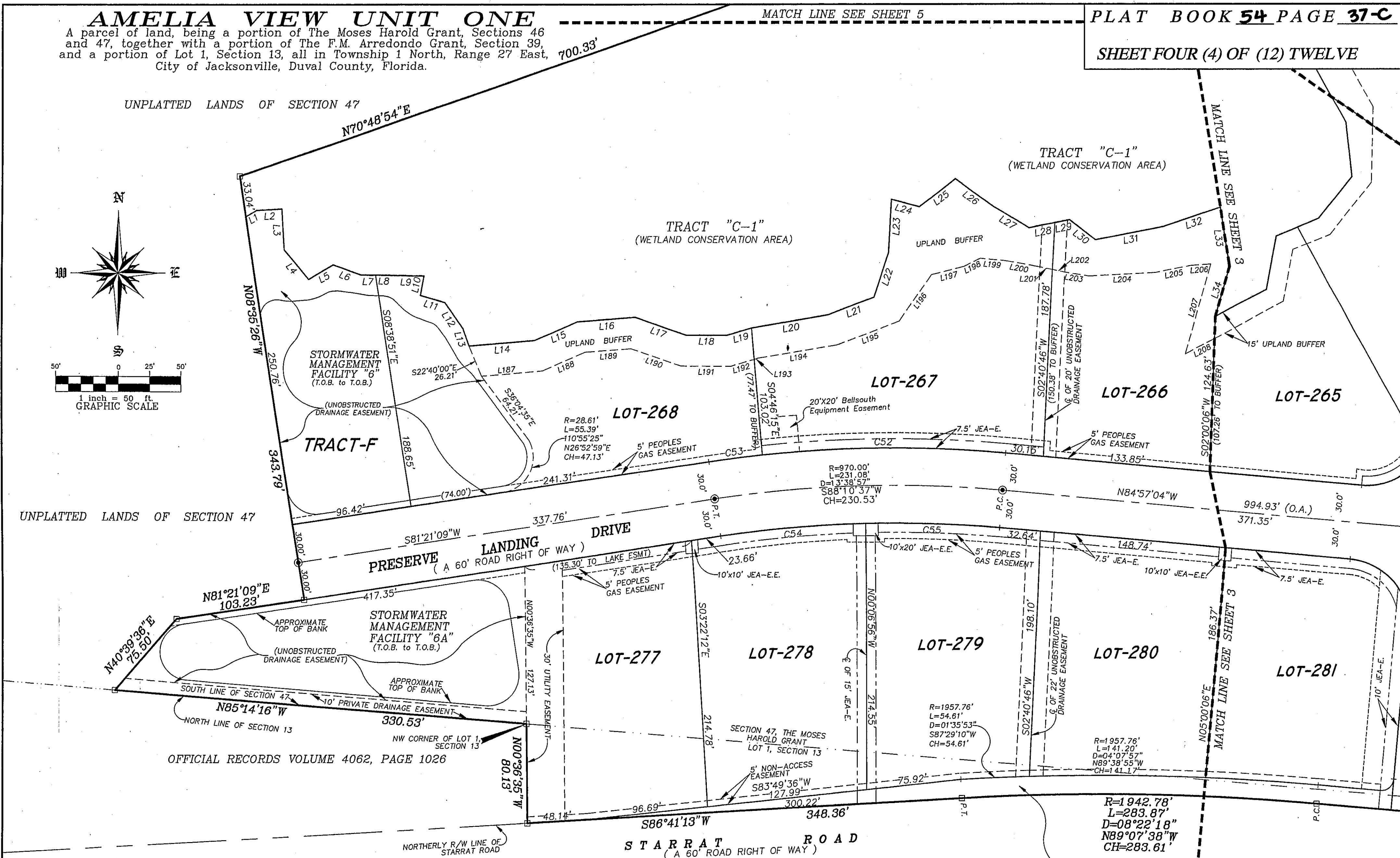
PLAT BOOK 54 PAGE 37-C

SHEET FOUR (4) OF (12) TWELVE

UNPLATTED LANDS OF SECTION 47



UNPLATTED LANDS OF SECTION 47



OFFICIAL RECORDS VOLUME 4062, PAGE 1026

A & J
LAND SURVEYORS, INC.
Professional Land Surveyors
7960 Belfort Parkway, Suite 1600
Jacksonville, Florida 32256
Fax (904) 298-4583
Phone (904) 298-1686 L.B. No. 6661

| LINE | CHORD BEARING | DISTANCE |
|------|---------------|----------|
| L1 | S59°23'59"W | 10.17' |
| L2 | S87°04'28"W | 20.11' |
| L3 | N03°40'08"W | 32.80' |
| L4 | N39°52'37"W | 30.94' |
| L5 | S59°22'46"W | 22.75' |
| L6 | N69°58'03"W | 23.83' |
| L7 | N89°33'32"W | 11.67' |
| L8 | N89°33'32"W | 9.75' |
| L9 | N88°54'54"W | 29.02' |
| L10 | N10°29'01"E | 16.04' |
| L11 | N73°12'34"W | 20.44' |
| L12 | N35°20'36"W | 25.21' |
| L13 | N18°53'14"W | 15.22' |
| L14 | S84°48'17"W | 52.52' |

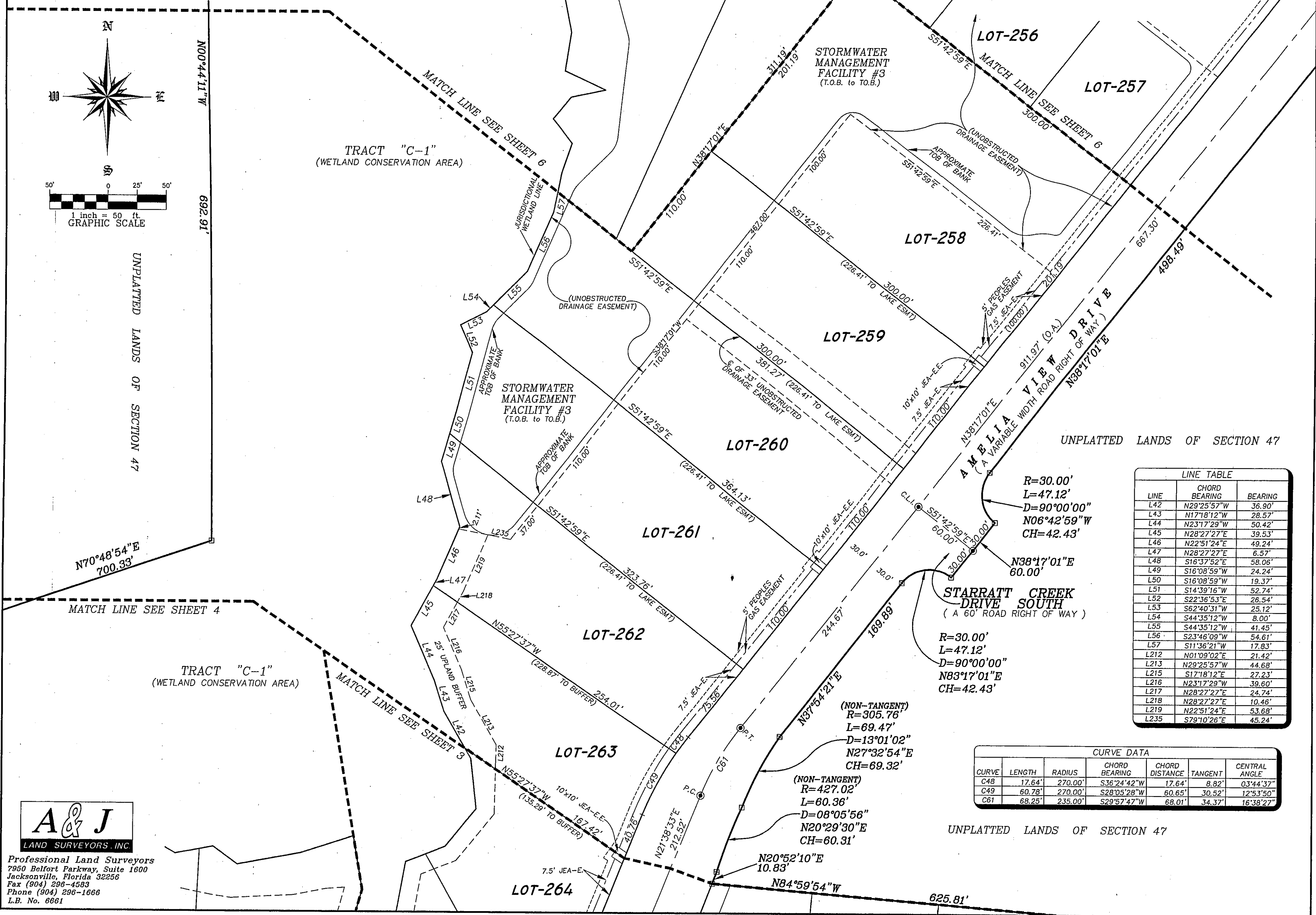
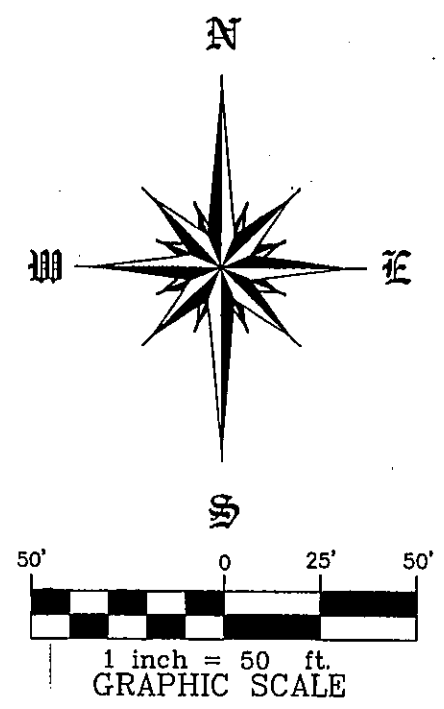
| LINE | CHORD BEARING | DISTANCE |
|------|---------------|----------|
| L15 | S66°06'41"W | 37.53' |
| L16 | S85°30'50"W | 46.49' |
| L17 | N70°53'03"W | 43.37' |
| L18 | N89°50'38"W | 32.29' |
| L19 | S73°21'16"W | 20.80' |
| L20 | S80°20'03"W | 62.33' |
| L21 | S68°48'30"W | 39.08' |
| L22 | S17°44'34"W | 37.67' |
| L23 | S02°42'19"W | 42.36' |
| L24 | N74°37'57"W | 23.14' |
| L25 | S52°14'13"W | 36.55' |
| L26 | N54°04'13"W | 37.77' |
| L27 | N59°39'57"W | 32.82' |
| L28 | S79°12'36"W | 21.12' |

| LINE | CHORD BEARING | DISTANCE |
|------|---------------|----------|
| L29 | S79°12'36"W | 11.95' |
| L30 | N53°24'22"W | 26.01' |
| L31 | S79°14'51"W | 55.33' |
| L32 | S71°49'18"W | 47.81' |
| L33 | N09°21'59"W | 47.39' |
| L34 | N15°39'21"E | 41.56' |
| L187 | S84°48'17"W | 48.76' |
| L188 | S66°06'41"W | 37.37' |
| L189 | S85°30'50"W | 36.99' |
| L190 | N70°53'03"W | 42.32' |
| L191 | N89°50'38"W | 40.16' |
| L192 | S73°21'16"W | 19.23' |
| L193 | S73°21'16"W | 3.73' |
| L194 | S80°20'03"W | 63.33' |

| LINE | CHORD BEARING | DISTANCE |
|------|---------------|----------|
| L195 | S68°48'30"W | 53.78' |
| L196 | S34°39'39"W | 45.17' |
| L197 | S75°58'27"W | 26.66' |
| L198 | S63°27'11"W | 14.46' |
| L199 | N84°48'35"W | 20.40' |
| L200 | N79°52'59"W | 26.27' |
| L201 | N78°23'33"W | 10.12' |
| L202 | N78°23'33"W | 10.12' |
| L203 | N81°15'38"W | 19.41' |
| L204 | S87°02'29"W | 53.64' |
| L205 | S78°41'55"W | 28.26' |
| L206 | S85°52'22"W | 16.49' |
| L207 | N15°39'21"E | 74.63' |
| L208 | S61°44'42"W | 26.51' |

| CURVE | LENGTH | RADIUS | CHORD BEARING | CHORD DISTANCE | TANGENT | CENTRAL ANGLE |
|-------|---------|----------|---------------|----------------|---------|---------------|
| C52 | 195.15' | 1000.00' | S89°24'40"W | 194.84' | 97.88' | 110°52' |
| C53 | 43.08' | 1000.00' | S82°35'11"W | 43.08' | 21.54' | 02°28'06" |
| C54 | 116.58' | 940.00' | S84°54'19"W | 116.50' | 58.36' | 07°06'20" |
| C55 | 107.36' | 940.00' | N88°16'13"W | 107.30' | 53.74' | 06°32'37" |
| C58 | 140.60' | 1942.76' | N89°40'47"W | 140.57' | 70.33' | 04°08'47" |
| C59 | 53.04' | 1942.76' | S87°28'09"W | 53.04' | 26.52' | 01°33'51" |
| C76 | 286.05' | 1974.96' | S89°07'38"E | 285.80' | 143.28' | 08°17'55" |

AMELIA VIEW UNIT ONE
 A parcel of land, being a portion of The Moses Harold Grant, Sections 46 and 47, together with a portion of The F.M. Arredondo Grant, Section 39, and a portion of Lot 1, Section 13, all in Township 1 North, Range 27 East, City of Jacksonville, Duval County, Florida.



LINE TABLE

| LINE | CHORD BEARING | BEARING |
|------|---------------|---------|
| L42 | N29°25'57"W | 36.90' |
| L43 | N17°18'12"W | 28.57' |
| L44 | N23°17'29"W | 50.42' |
| L45 | N28°27'27"E | 39.53' |
| L46 | N22°51'24"E | 49.24' |
| L47 | N28°27'27"E | 6.57' |
| L48 | S16°37'52"E | 58.06' |
| L49 | S16°08'59"W | 24.24' |
| L50 | S16°08'59"W | 19.37' |
| L51 | S14°39'16"W | 52.74' |
| L52 | S22°36'53"E | 26.54' |
| L53 | S62°40'31"W | 25.12' |
| L54 | S44°35'12"W | 8.00' |
| L55 | S44°35'12"W | 41.45' |
| L56 | S23°46'09"W | 54.61' |
| L57 | S11°36'21"W | 17.83' |
| L212 | N01°09'02"E | 21.42' |
| L213 | N29°25'57"W | 44.68' |
| L215 | S17°18'12"E | 27.23' |
| L216 | N23°17'29"W | 39.60' |
| L217 | N28°27'27"E | 24.74' |
| L218 | N28°27'27"E | 10.46' |
| L219 | N22°51'24"E | 53.68' |
| L235 | S79°10'26"E | 45.24' |

CURVE DATA

| CURVE | LENGTH | RADIUS | CHORD BEARING | CHORD DISTANCE | TANGENT | CENTRAL ANGLE |
|-------|--------|---------|---------------|----------------|---------|---------------|
| C48 | 17.64' | 270.00' | S36°24'42"W | 17.64' | 8.82' | 03°44'37" |
| C49 | 60.78' | 270.00' | S28°05'28"W | 60.65' | 30.52' | 12°53'50" |
| C61 | 68.25' | 235.00' | S29°57'47"W | 68.01' | 34.37' | 16°38'27" |

A & J
 LAND SURVEYORS, INC.
 Professional Land Surveyors
 7950 Belfort Parkway, Suite 1600
 Jacksonville, Florida 32256
 Fax (904) 298-4583
 Phone (904) 298-1866
 L.B. No. 6661

AMELIA VIEW UNIT ONE

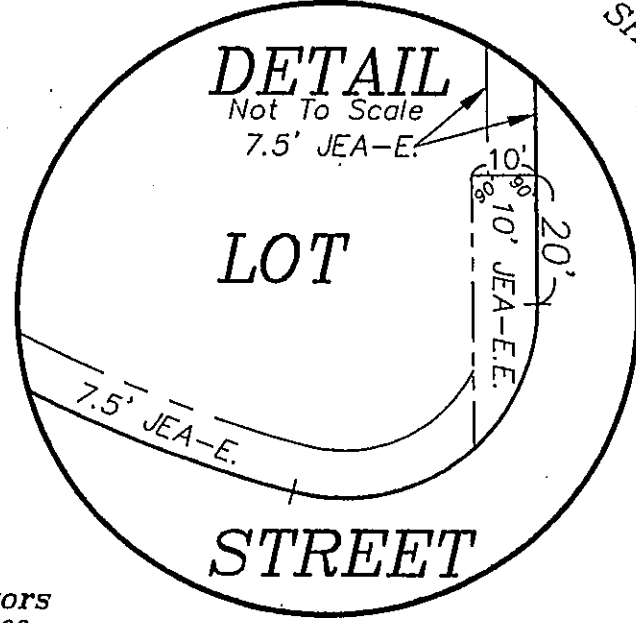
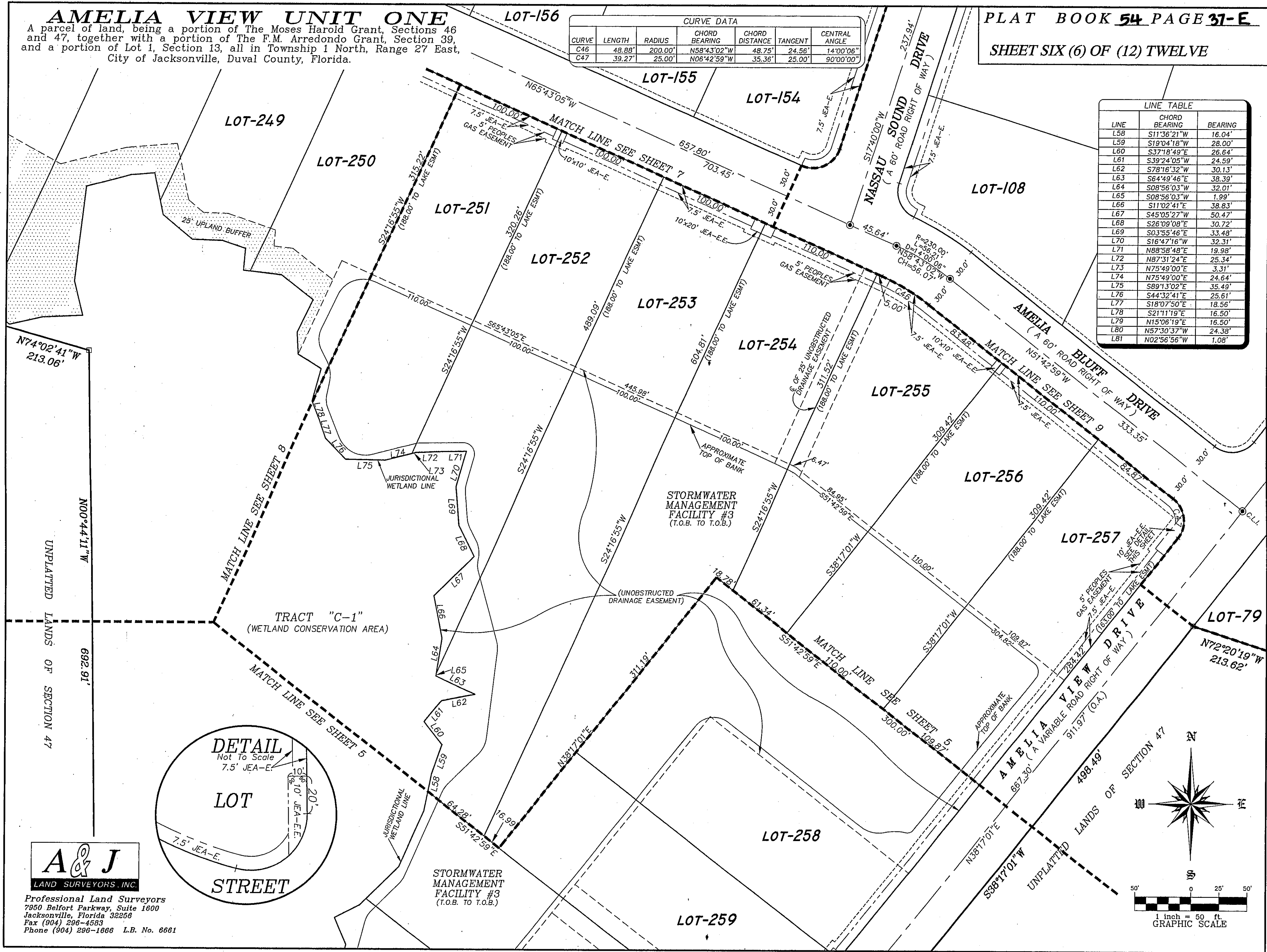
A parcel of land, being a portion of The Moses Harold Grant, Sections 46 and 47, together with a portion of The F.M. Arredondo Grant, Section 39, and a portion of Lot 1, Section 13, all in Township 1 North, Range 27 East, City of Jacksonville, Duval County, Florida.

| CURVE DATA | | | | | | |
|------------|--------|---------|---------------|----------------|---------|---------------|
| CURVE | LENGTH | RADIUS | CHORD BEARING | CHORD DISTANCE | TANGENT | CENTRAL ANGLE |
| C46 | 48.88' | 200.00' | N58°43'02"W | 48.75' | 24.56' | 14°00'06" |
| C47 | 39.27' | 25.00' | N06°42'59"W | 35.36' | 25.00' | 90°00'00" |

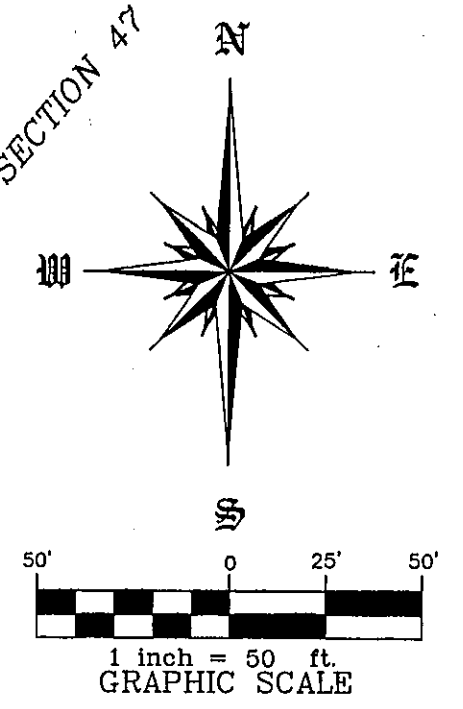
PLAT BOOK 54 PAGE 31-E

SHEET SIX (6) OF (12) TWELVE

| LINE TABLE | | |
|------------|---------------|---------|
| LINE | CHORD BEARING | BEARING |
| L58 | S11°36'21"W | 16.04' |
| L59 | S19°04'18"W | 28.00' |
| L60 | S37°18'49"E | 26.64' |
| L61 | S39°24'05"W | 24.59' |
| L62 | S78°16'32"W | 30.13' |
| L63 | S64°49'46"E | 38.39' |
| L64 | S08°56'03"W | 32.01' |
| L65 | S08°56'03"W | 1.99' |
| L66 | S11°02'41"E | 38.83' |
| L67 | S45°05'27"W | 50.47' |
| L68 | S26°09'08"E | 30.72' |
| L69 | S03°55'46"E | 33.48' |
| L70 | S16°47'16"W | 32.31' |
| L71 | N88°58'48"E | 19.98' |
| L72 | N87°31'24"E | 25.34' |
| L73 | N75°49'00"E | 3.31' |
| L74 | N75°49'00"E | 24.64' |
| L75 | S89°13'02"E | 35.49' |
| L76 | S44°32'41"E | 25.61' |
| L77 | S18°07'50"E | 18.56' |
| L78 | S21°11'19"E | 16.50' |
| L79 | N15°06'19"E | 16.50' |
| L80 | N57°30'37"W | 24.38' |
| L81 | N02°56'56"W | 1.08' |



A & J
LAND SURVEYORS, INC.
Professional Land Surveyors
7950 Belfort Parkway, Suite 1600
Jacksonville, Florida 32256
Fax (904) 296-4583
Phone (904) 296-1866 L.B. No. 6681

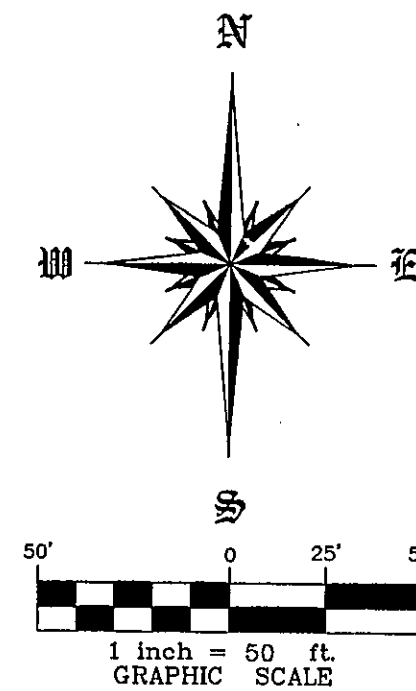
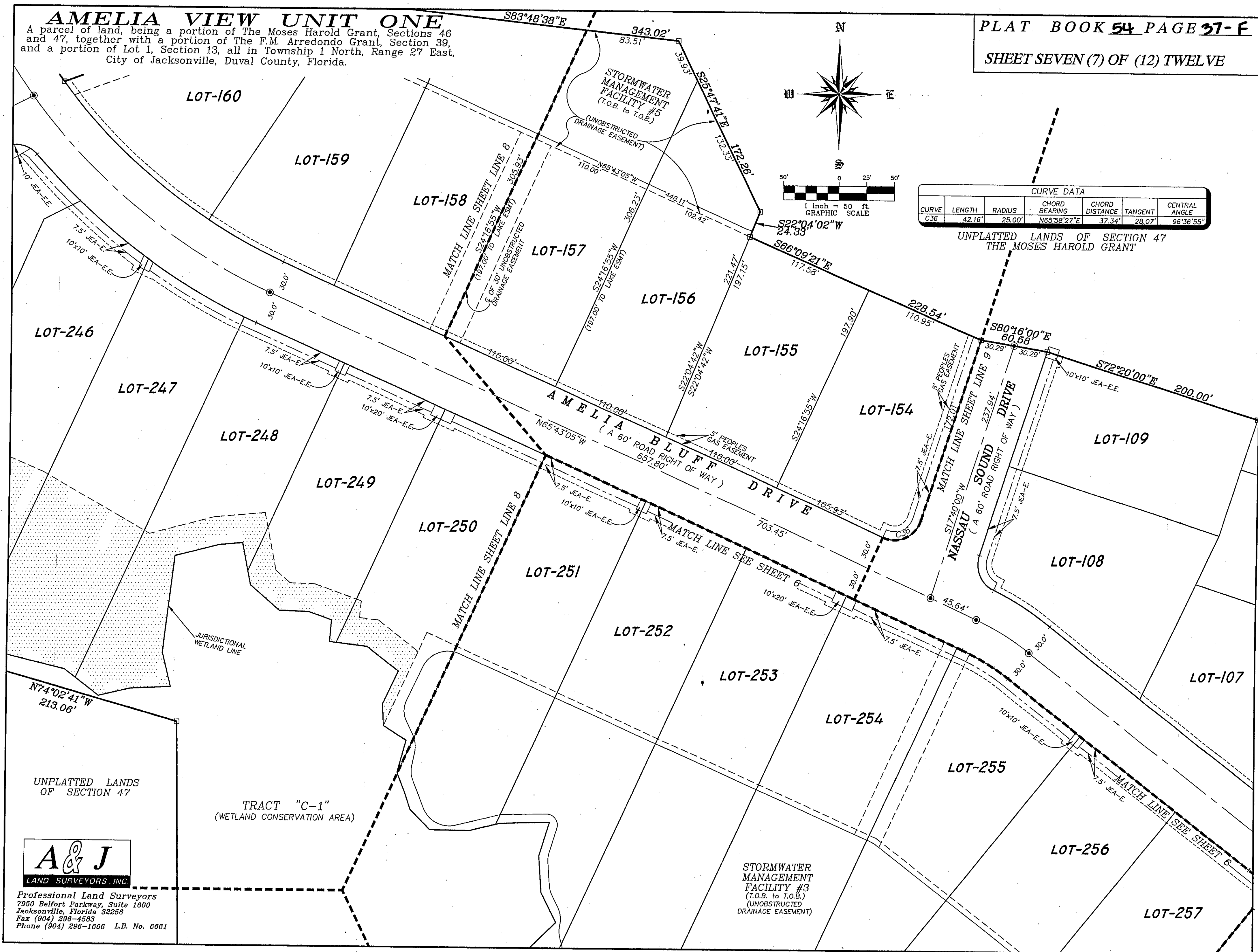


AMELIA VIEW UNIT ONE

A parcel of land, being a portion of The Moses Harold Grant, Sections 46 and 47, together with a portion of The F.M. Arredondo Grant, Section 39, and a portion of Lot 1, Section 13, all in Township 1 North, Range 27 East, City of Jacksonville, Duval County, Florida.

PLAT BOOK 54 PAGE 37-F

SHEET SEVEN (7) OF (12) TWELVE



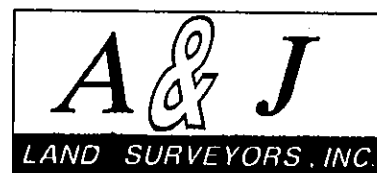
| CURVE DATA | | | | | | |
|------------|--------|--------|---------------|----------------|---------|---------------|
| CURVE | LENGTH | RADIUS | CHORD BEARING | CHORD DISTANCE | TANGENT | CENTRAL ANGLE |
| C36 | 42.16' | 25.00' | N65°58'27"E | 37.34' | 28.07' | 96°36'55" |

UNPLATTED LANDS OF SECTION 47 THE MOSES HAROLD GRANT

N74°02'41"W
213.06'

UNPLATTED LANDS OF SECTION 47

TRACT "C-1"
(WETLAND CONSERVATION AREA)



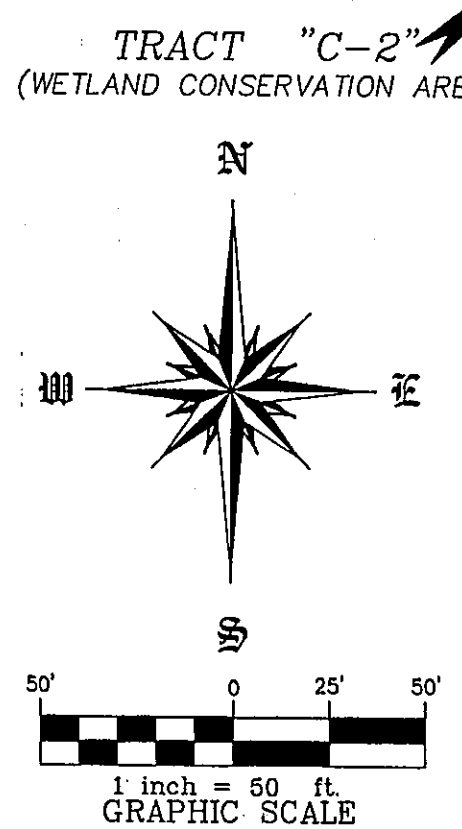
Professional Land Surveyors
7950 Belfort Parkway, Suite 1600
Jacksonville, Florida 32256
Fax (904) 296-4583
Phone (904) 296-1666 L.B. No. 6661

STORMWATER MANAGEMENT FACILITY #3 (T.O.B. to T.O.B.) (UNOBSTRUCTED DRAINAGE EASEMENT)

AMELIA VIEW UNIT ONE

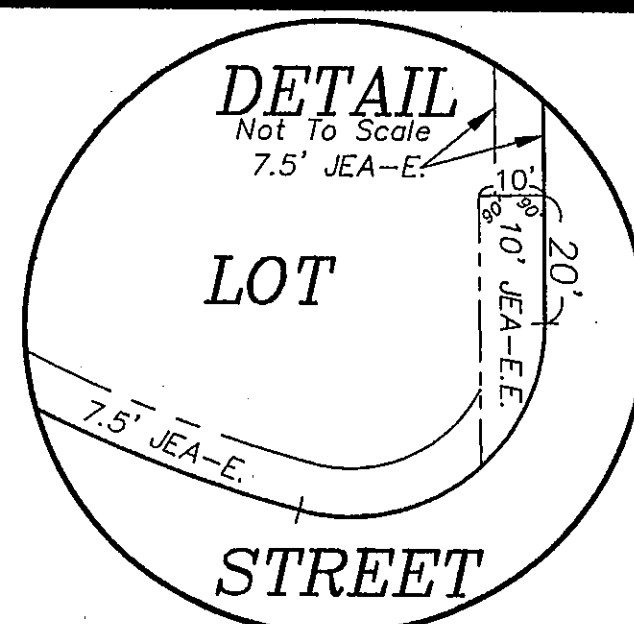
A parcel of land, being a portion of The Moses Harold Grant, Sections 46 and 47, together with a portion of The F.M. Arredondo Grant, Section 39, and a portion of Lot 1, Section 13, all in Township 1 North, Range 27 East, City of Jacksonville, Duval County, Florida.

| LINE | CHORD BEARING | BEARING |
|------|---------------|---------|
| L79 | N21°11'19"W | 0.71' |
| L80 | N15°06'19"W | 30.53' |
| L81 | N57°30'37"W | 24.38' |
| L82 | N02°56'56"W | 19.76' |
| L83 | N25°10'25"E | 32.93' |
| L84 | N52°09'49"W | 36.14' |
| L85 | N83°13'46"W | 28.14' |
| L86 | N04°36'35"E | 19.74' |
| L87 | N70°32'04"W | 21.86' |
| L88 | N83°13'46"W | 6.04' |
| L89 | N88°06'16"W | 26.97' |
| L90 | N49°39'50"W | 34.52' |
| L91 | N11°45'02"W | 13.09' |
| L92 | S85°08'19"W | 21.26' |
| L93 | N11°45'02"W | 25.53' |
| L94 | S75°13'59"W | 40.78' |
| L95 | S06°29'52"W | 87.35' |
| L96 | S13°37'39"E | 32.12' |
| L97 | S87°03'54"W | 35.97' |
| L98 | S76°40'43"W | 29.86' |
| L99 | N52°22'33"W | 26.21' |
| L100 | N52°22'33"W | 12.56' |
| L101 | N76°12'05"W | 50.88' |
| L102 | S71°43'22"E | 37.96' |
| L103 | S71°43'22"E | 2.19' |
| L104 | S38°06'56"E | 58.06' |
| L105 | S21°05'52"E | 45.09' |
| L106 | S15°54'39"W | 15.60' |
| L107 | S09°33'10"E | 29.21' |
| L108 | S51°15'41"E | 35.10' |
| L109 | S51°15'41"E | 11.04' |
| L110 | S08°47'17"E | 59.91' |
| L111 | S44°12'19"E | 54.52' |
| L112 | S28°49'15"E | 57.05' |
| L113 | S19°05'38"E | 35.93' |
| L114 | S41°59'11"E | 20.64' |
| L115 | S10°40'45"E | 77.59' |
| L116 | S33°26'40"E | 18.91' |
| L117 | S33°26'40"E | 5.95' |
| L118 | S05°32'00"W | 48.17' |
| L119 | N44°12'31"W | 56.15' |
| L120 | S17°18'05"E | 4.61' |
| L220 | S85°08'19"W | 3.04' |
| L221 | S75°13'59"W | 60.54' |
| L222 | S80°29'45"E | 30.45' |
| L223 | S60°26'37"E | 80.34' |
| L224 | S66°46'33"E | 99.75' |
| L225 | S32°17'45"E | 42.22' |
| L226 | S40°51'45"E | 72.00' |
| L227 | N74°13'43"E | 46.25' |
| L228 | S22°48'10"E | 40.10' |
| L229 | N67°36'49"E | 5.94' |
| L230 | S60°00'26"E | 31.85' |
| L231 | S29°13'36"E | 66.39' |
| L232 | S66°05'55"E | 24.80' |
| L233 | S05°32'00"W | 51.70' |
| L234 | S44°12'31"E | 64.00' |
| L235 | S79°10'26"E | 45.24' |
| L236 | N20°31'57"W | 27.85' |
| L237 | S66°10'36"W | 33.02' |

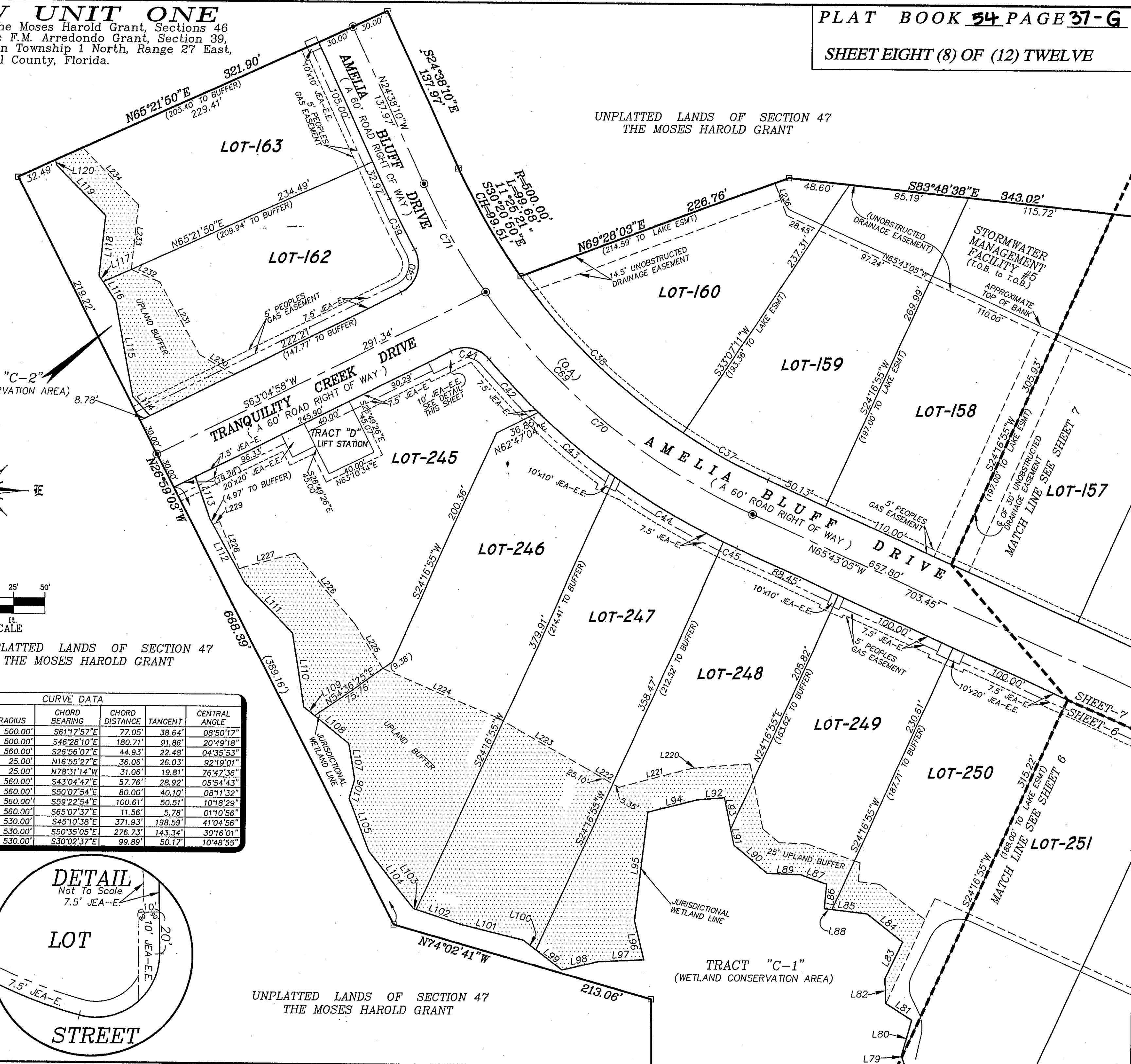


UNPLATED LANDS OF SECTION 47
THE MOSES HAROLD GRANT

| CURVE | LENGTH | RADIUS | CHORD BEARING | CHORD DISTANCE | TANGENT | CENTRAL ANGLE |
|-------|---------|---------|---------------|----------------|---------|---------------|
| C37 | 77.13' | 500.00' | S61°17'57"E | 77.05' | 38.64' | 08°50'17" |
| C38 | 181.70' | 500.00' | S46°28'10"E | 180.71' | 91.86' | 20°49'18" |
| C39 | 44.94' | 560.00' | S26°56'07"E | 44.93' | 22.48' | 04°35'53" |
| C40 | 40.28' | 25.00' | N16°55'27"E | 36.06' | 26.03' | 92°19'01" |
| C41 | 33.51' | 25.00' | N78°31'14"W | 31.06' | 19.81' | 76°47'36" |
| C42 | 57.58' | 560.00' | S43°04'47"E | 57.76' | 28.92' | 05°54'43" |
| C43 | 80.07' | 560.00' | S50°07'54"E | 80.00' | 40.10' | 08°11'32" |
| C44 | 100.75' | 560.00' | S52°22'54"E | 100.61' | 50.51' | 10°18'29" |
| C45 | 11.56' | 560.00' | S65°07'37"E | 11.56' | 5.78' | 01°10'56" |
| C69 | 380.02' | 530.00' | S45°10'38"E | 371.93' | 198.59' | 41°04'56" |
| C70 | 279.98' | 530.00' | S50°35'05"E | 276.73' | 143.34' | 30°16'01" |
| C71 | 100.04' | 530.00' | S30°02'37"E | 99.89' | 50.17' | 10°48'55" |

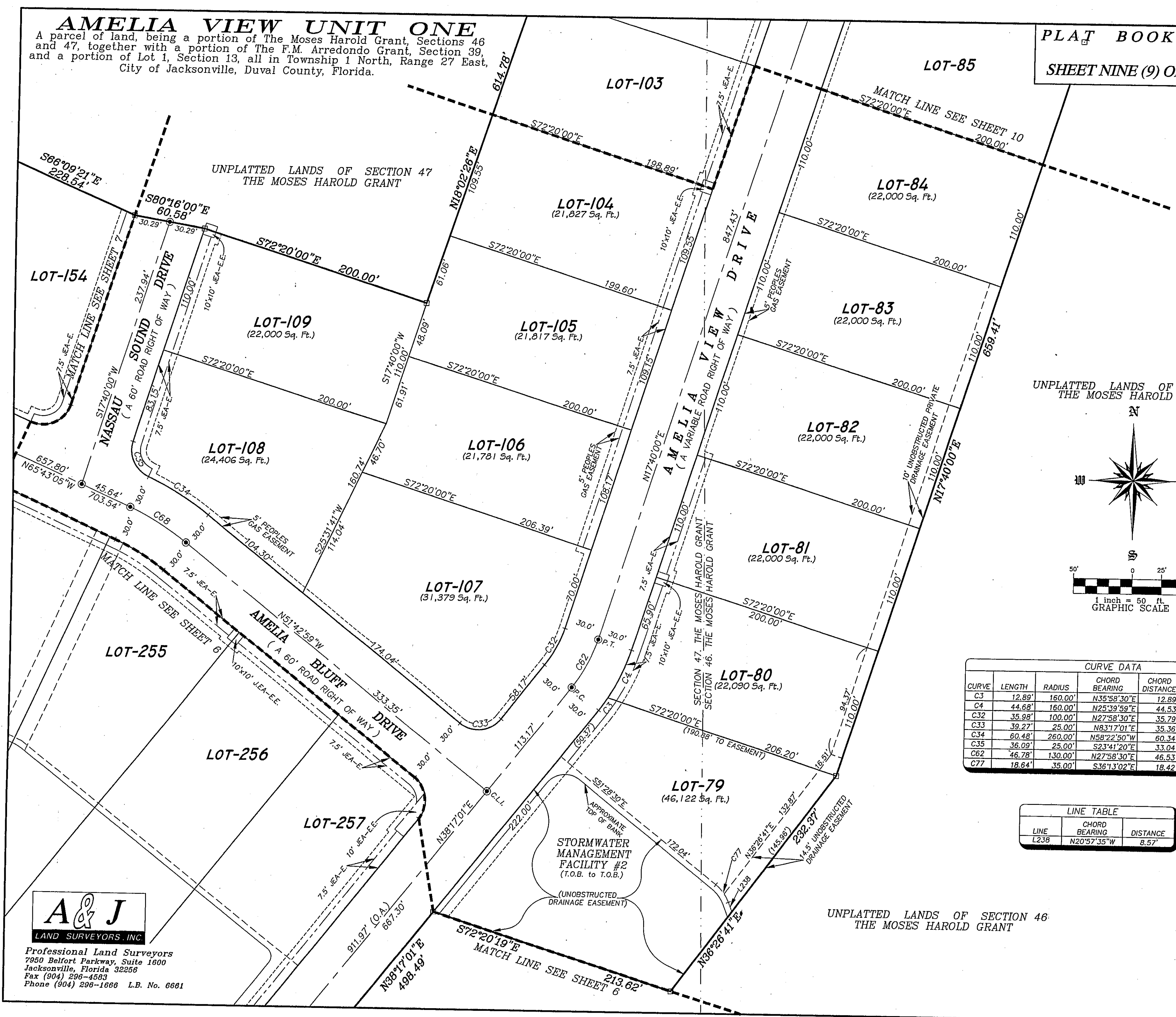


A & J
LAND SURVEYORS, INC.
Professional Land Surveyors
7950 Belfort Parkway, Suite 1600
Jacksonville, Florida 32256
Fax (904) 296-4583
Phone (904) 296-1866 L.B. No. 6661

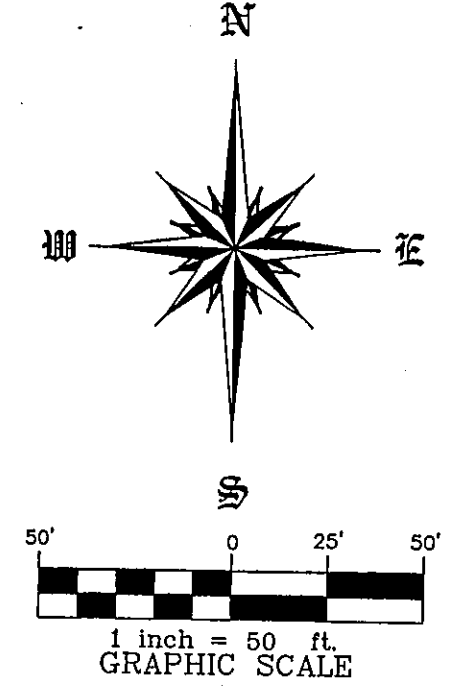


UNPLATED LANDS OF SECTION 47
THE MOSES HAROLD GRANT

AMELIA VIEW UNIT ONE
 A parcel of land, being a portion of The Moses Harold Grant, Sections 46 and 47, together with a portion of The F.M. Arredondo Grant, Section 39, and a portion of Lot 1, Section 13, all in Township 1 North, Range 27 East, City of Jacksonville, Duval County, Florida.



UNPLATTED LANDS OF SECTION 46
 THE MOSES HAROLD GRANT



CURVE DATA

| CURVE | LENGTH | RADIUS | CHORD BEARING | CHORD DISTANCE | TANGENT | CENTRAL ANGLE |
|-------|--------|---------|---------------|----------------|---------|---------------|
| C3 | 12.89' | 160.00' | N35°58'30"E | 12.89' | 6.45' | 04°37'02" |
| C4 | 44.68' | 160.00' | N25°39'59"E | 44.53' | 22.49' | 15°59'59" |
| C32 | 35.98' | 100.00' | N27°58'30"E | 35.79' | 18.19' | 20°37'01" |
| C33 | 39.27' | 25.00' | N83°17'01"E | 35.36' | 25.00' | 90°00'00" |
| C34 | 60.48' | 260.00' | N58°22'50"W | 60.34' | 30.38' | 13°19'40" |
| C35 | 36.09' | 25.00' | S23°41'20"E | 33.04' | 22.01' | 82°42'40" |
| C62 | 46.78' | 130.00' | N27°58'30"E | 46.53' | 23.64' | 20°37'01" |
| C77 | 18.64' | 35.00' | S36°13'02"E | 18.42' | 9.55' | 30°30'55" |

LINE TABLE

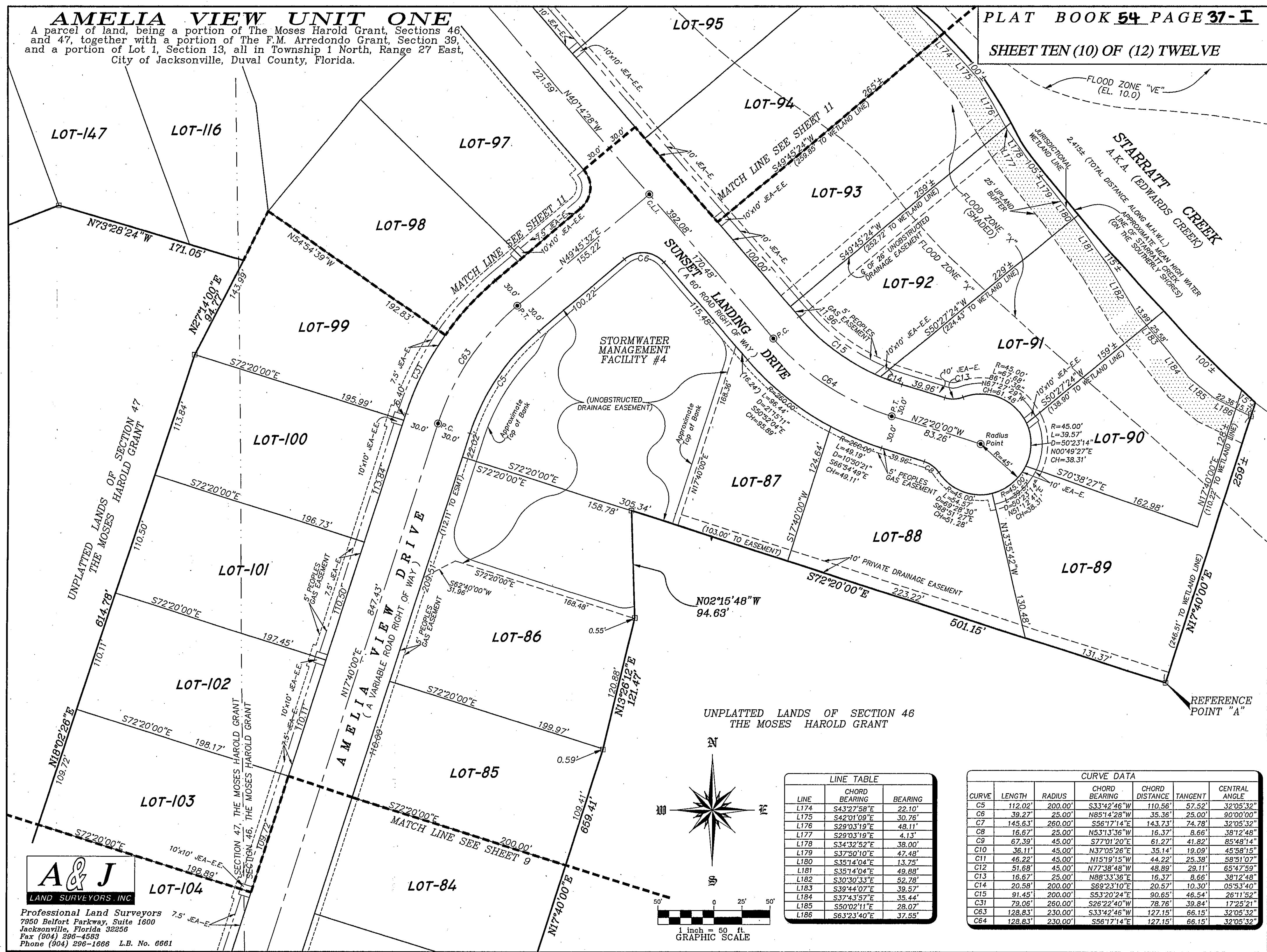
| LINE | CHORD BEARING | DISTANCE |
|------|---------------|----------|
| L23B | N20°57'35"W | 8.57' |

A & J
 LAND SURVEYORS, INC.
 Professional Land Surveyors
 7950 Belfort Parkway, Suite 1600
 Jacksonville, Florida 32256
 Fax (904) 296-4583
 Phone (904) 296-1666 L.B. No. 6681

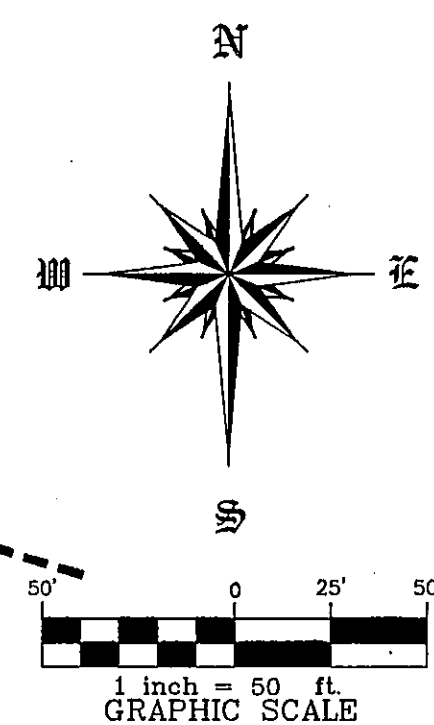
UNPLATTED LANDS OF SECTION 46
 THE MOSES HAROLD GRANT

AMELIA VIEW UNIT ONE

A parcel of land, being a portion of The Moses Harold Grant, Sections 46 and 47, together with a portion of The F.M. Arredondo Grant, Section 39, and a portion of Lot 1, Section 13, all in Township 1 North, Range 27 East, City of Jacksonville, Duval County, Florida.



A & J
LAND SURVEYORS, INC.
Professional Land Surveyors
7950 Belfort Parkway, Suite 1600
Jacksonville, Florida 32256
Fax (904) 296-4583
Phone (904) 296-1606 L.B. No. 6661

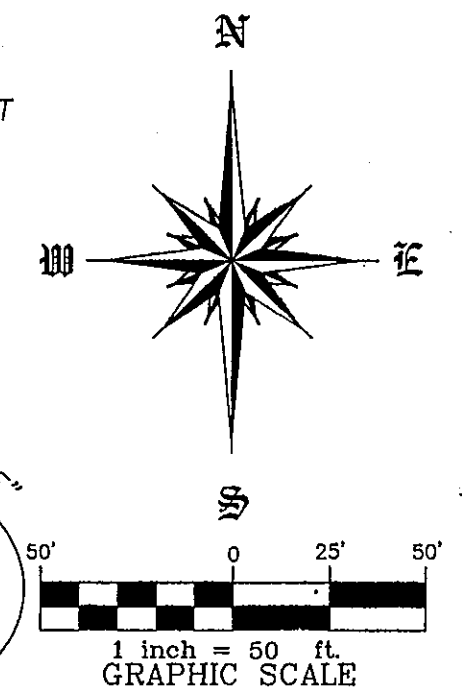
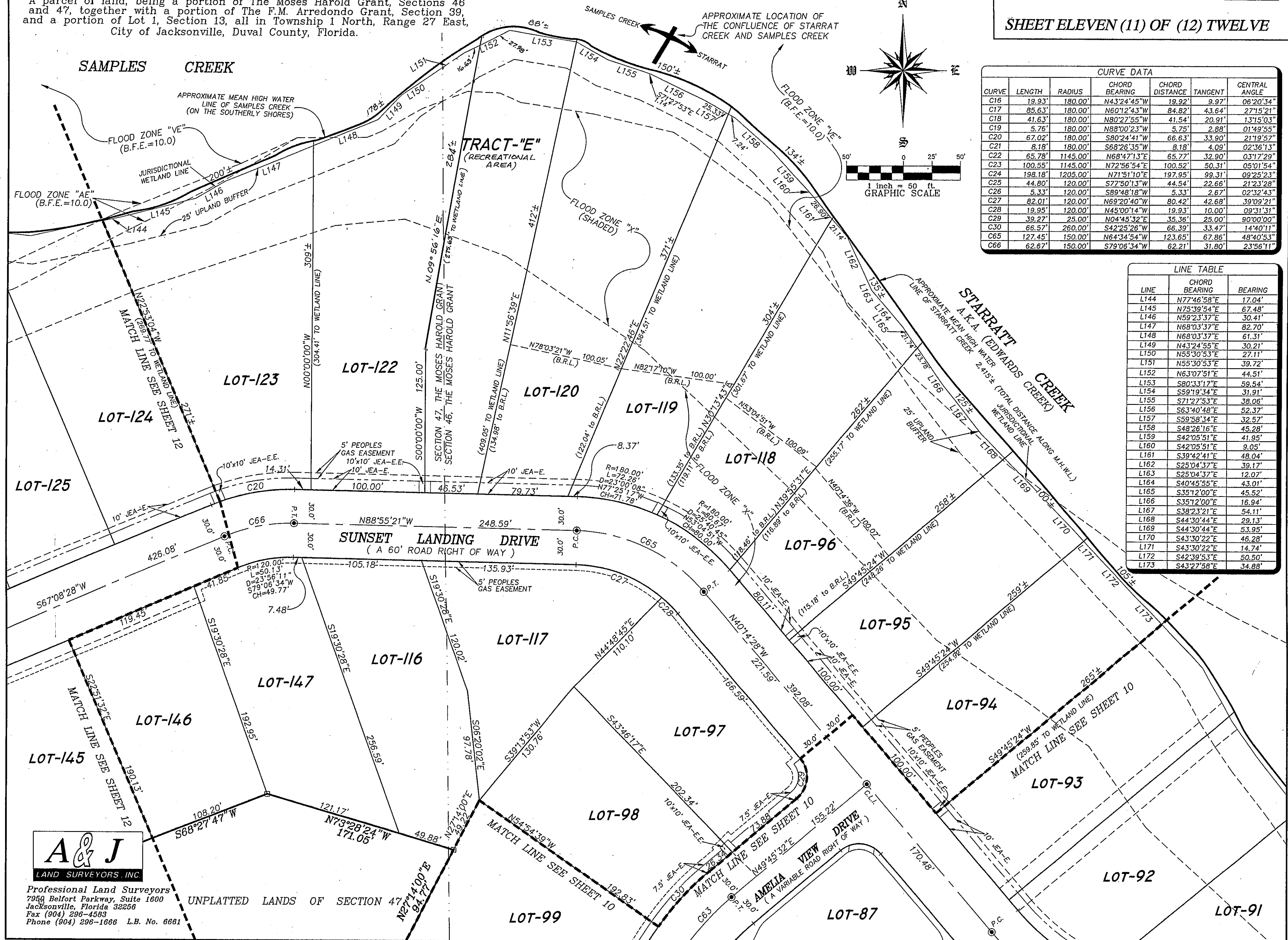


| LINE TABLE | | |
|------------|---------------|---------|
| LINE | CHORD BEARING | BEARING |
| L174 | S43°27'58"E | 22.10' |
| L175 | S42°01'09"E | 30.76' |
| L176 | S29°03'19"E | 48.11' |
| L177 | S29°03'19"E | 4.13' |
| L178 | S34°32'52"E | 38.00' |
| L179 | S37°50'10"E | 47.48' |
| L180 | S35°14'04"E | 13.75' |
| L181 | S35°14'04"E | 49.88' |
| L182 | S30°30'33"E | 52.78' |
| L183 | S39°44'07"E | 39.57' |
| L184 | S37°43'57"E | 35.44' |
| L185 | S50°02'11"E | 28.07' |
| L186 | S63°23'40"E | 37.55' |

| CURVE DATA | | | | | | |
|------------|---------|---------|---------------|----------------|---------|---------------|
| CURVE | LENGTH | RADIUS | CHORD BEARING | CHORD DISTANCE | TANGENT | CENTRAL ANGLE |
| C5 | 112.02' | 200.00' | S33°42'46"W | 110.56' | 57.52' | 32°05'32" |
| C6 | 39.27' | 25.00' | N85°14'28"W | 35.36' | 25.00' | 90°00'00" |
| C7 | 145.63' | 260.00' | S56°17'14"E | 143.73' | 74.78' | 32°05'32" |
| C8 | 16.67' | 25.00' | N53°13'36"W | 16.37' | 8.66' | 38°12'48" |
| C9 | 67.39' | 45.00' | S77°01'20"E | 61.27' | 41.82' | 85°48'14" |
| C10 | 36.11' | 45.00' | N37°05'26"E | 35.14' | 19.09' | 45°58'15" |
| C11 | 46.22' | 45.00' | N15°19'15"W | 44.22' | 25.38' | 58°51'07" |
| C12 | 51.68' | 45.00' | N77°38'48"W | 48.89' | 29.11' | 65°47'59" |
| C13 | 16.67' | 25.00' | N88°33'36"E | 16.37' | 8.66' | 38°12'48" |
| C14 | 20.58' | 200.00' | S69°23'10"E | 20.57' | 10.30' | 05°53'40" |
| C15 | 91.45' | 200.00' | S53°20'24"E | 90.65' | 46.54' | 26°11'52" |
| C31 | 79.06' | 260.00' | S26°22'40"W | 78.76' | 39.84' | 17°25'21" |
| C63 | 128.83' | 230.00' | S33°42'46"W | 127.15' | 66.15' | 32°05'32" |
| C64 | 128.83' | 230.00' | S56°17'14"E | 127.15' | 66.15' | 32°05'32" |

AMELIA VIEW UNIT ONE

A parcel of land, being a portion of The Moses Harold Grant, Sections 46 and 47, together with a portion of The F.M. Arredondo Grant, Section 39, and a portion of Lot 1, Section 13, all in Township 1 North, Range 27 East, City of Jacksonville, Duval County, Florida.



| CURVE DATA | | | | | | |
|------------|---------|----------|---------------|----------------|---------|---------------|
| CURVE | LENGTH | RADIUS | CHORD BEARING | CHORD DISTANCE | TANGENT | CENTRAL ANGLE |
| C16 | 19.93' | 180.00' | N43°24'45"W | 19.92' | 9.97' | 06°20'34" |
| C17 | 85.63' | 180.00' | N60°12'43"W | 84.82' | 43.64' | 27°15'21" |
| C18 | 41.63' | 180.00' | N80°27'55"W | 41.54' | 20.91' | 13°15'03" |
| C19 | 5.76' | 180.00' | N88°00'23"W | 5.75' | 2.88' | 01°49'55" |
| C20 | 67.02' | 180.00' | S80°24'41"W | 66.63' | 33.90' | 21°19'57" |
| C21 | 8.18' | 180.00' | S68°26'35"W | 8.18' | 4.09' | 02°36'13" |
| C22 | 65.78' | 1145.00' | N68°47'13"E | 65.77' | 32.90' | 03°17'29" |
| C23 | 100.55' | 1145.00' | N72°56'54"E | 100.52' | 50.31' | 05°01'54" |
| C24 | 198.18' | 1205.00' | N71°51'10"E | 197.95' | 99.31' | 09°25'23" |
| C25 | 44.80' | 120.00' | S77°50'13"W | 44.54' | 22.66' | 21°23'28" |
| C26 | 5.33' | 120.00' | S89°48'18"W | 5.33' | 2.67' | 02°32'43" |
| C27 | 82.01' | 120.00' | N69°20'40"W | 80.42' | 42.68' | 39°09'21" |
| C28 | 19.95' | 120.00' | N45°00'14"W | 19.93' | 10.00' | 09°31'31" |
| C29 | 39.27' | 25.00' | N04°45'32"E | 35.36' | 25.00' | 90°00'00" |
| C30 | 66.57' | 260.00' | S42°25'26"W | 66.39' | 33.47' | 14°40'11" |
| C65 | 127.45' | 150.00' | N64°34'54"W | 123.65' | 67.86' | 48°40'53" |
| C66 | 62.67' | 150.00' | S79°06'34"W | 62.21' | 31.80' | 23°56'11" |

| LINE TABLE | | |
|------------|---------------|---------|
| LINE | CHORD BEARING | BEARING |
| L144 | N77°46'58"E | 17.04' |
| L145 | N75°39'54"E | 67.48' |
| L146 | N59°23'37"E | 30.41' |
| L147 | N68°03'37"E | 82.70' |
| L148 | N68°03'37"E | 61.31' |
| L149 | N43°24'55"E | 30.21' |
| L150 | N55°30'53"E | 27.11' |
| L151 | N55°30'53"E | 39.72' |
| L152 | N63°07'51"E | 44.51' |
| L153 | S80°33'17"E | 59.54' |
| L154 | S59°19'34"E | 31.91' |
| L155 | S71°22'53"E | 38.06' |
| L156 | S63°40'48"E | 52.37' |
| L157 | S59°58'34"E | 32.57' |
| L158 | S48°26'16"E | 45.28' |
| L159 | S42°05'51"E | 41.95' |
| L160 | S42°05'51"E | 9.05' |
| L161 | S39°42'41"E | 48.04' |
| L162 | S25°04'37"E | 39.17' |
| L163 | S25°04'37"E | 12.07' |
| L164 | S40°45'55"E | 43.01' |
| L165 | S35°12'00"E | 45.52' |
| L166 | S35°12'00"E | 16.94' |
| L167 | S38°23'21"E | 54.11' |
| L168 | S44°30'44"E | 29.13' |
| L169 | S44°30'44"E | 53.95' |
| L170 | S43°30'22"E | 46.28' |
| L171 | S43°30'22"E | 14.74' |
| L172 | S42°39'53"E | 60.50' |
| L173 | S43°27'58"E | 34.88' |

A & J
LAND SURVEYORS, INC.
Professional Land Surveyors
7940 Belfort Parkway, Suite 1600
Jacksonville, Florida 32256
Fax (904) 296-4583
Phone (904) 296-1866 L.B. No. 6661

UNPLATTED LANDS OF SECTION 47

