

# MARSH CREEK

TAXES VERIFIED R.D.P.

PLAT BOOK 38 PAGE 58

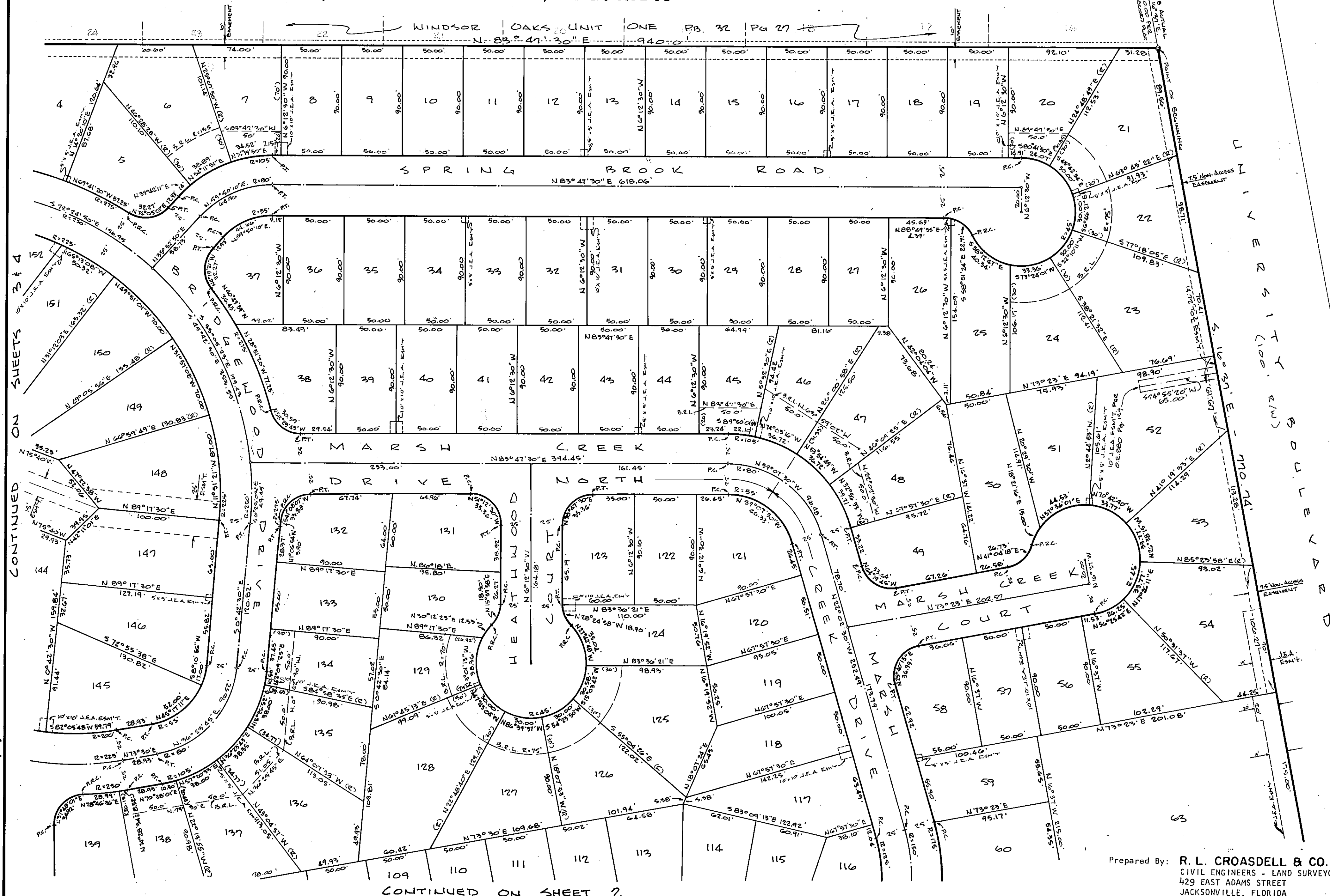
SHEET 1 OF 6 SHEETS

BEING A REPLAT OF A PART OF LOT 1, ST. ISABEL AS RECORDED IN DEED BOOK "R", PAGE 860 OF THE FORMER PUBLIC RECORDS AND A PART OF THE F. RICHARD GRANT, SECTION 38, TOWNSHIP 2 SOUTH, RANGE 27 EAST.

CITY OF JACKSONVILLE, DUVAL COUNTY, FLORIDA



GRAPHIC SCALE  
SCALE 1" = 50'



See affidavit recorded on 3-9-87 in O.R. 6292, Pg. 43.

See affidavit recorded 8-19-87 in O.R. 6384, Pg. 226  
See affidavit recorded on 5-26-87 in O.R. 6336, Pg. 872.

**APPROVED**  
DATE: February 11, 1983  
BY: L.K. Hodland PE  
CITY ENGINEER  
W.P. Smith Jr.  
DIRECTOR OF PUBLIC WORKS  
GENERAL COUNSEL, OR  
Michael J. ...  
ASSISTANT COUNSEL

CONTINUED ON SHEETS 3 & 4

CONTINUED ON SHEET 2

Prepared By: **R. L. CROADELL & CO.**  
CIVIL ENGINEERS - LAND SURVEYORS  
429 EAST ADAMS STREET  
JACKSONVILLE, FLORIDA

# MARSH CREEK

BEING A REPLAT OF A PART OF LOT 1, ST. ISABEL AS RECORDED IN DEED BOOK "R", PAGE 860 OF THE FORMER PUBLIC RECORDS AND A PART OF THE F. RICHARD GRANT, SECTION 38, TOWNSHIP 2 SOUTH, RANGE 27 EAST.

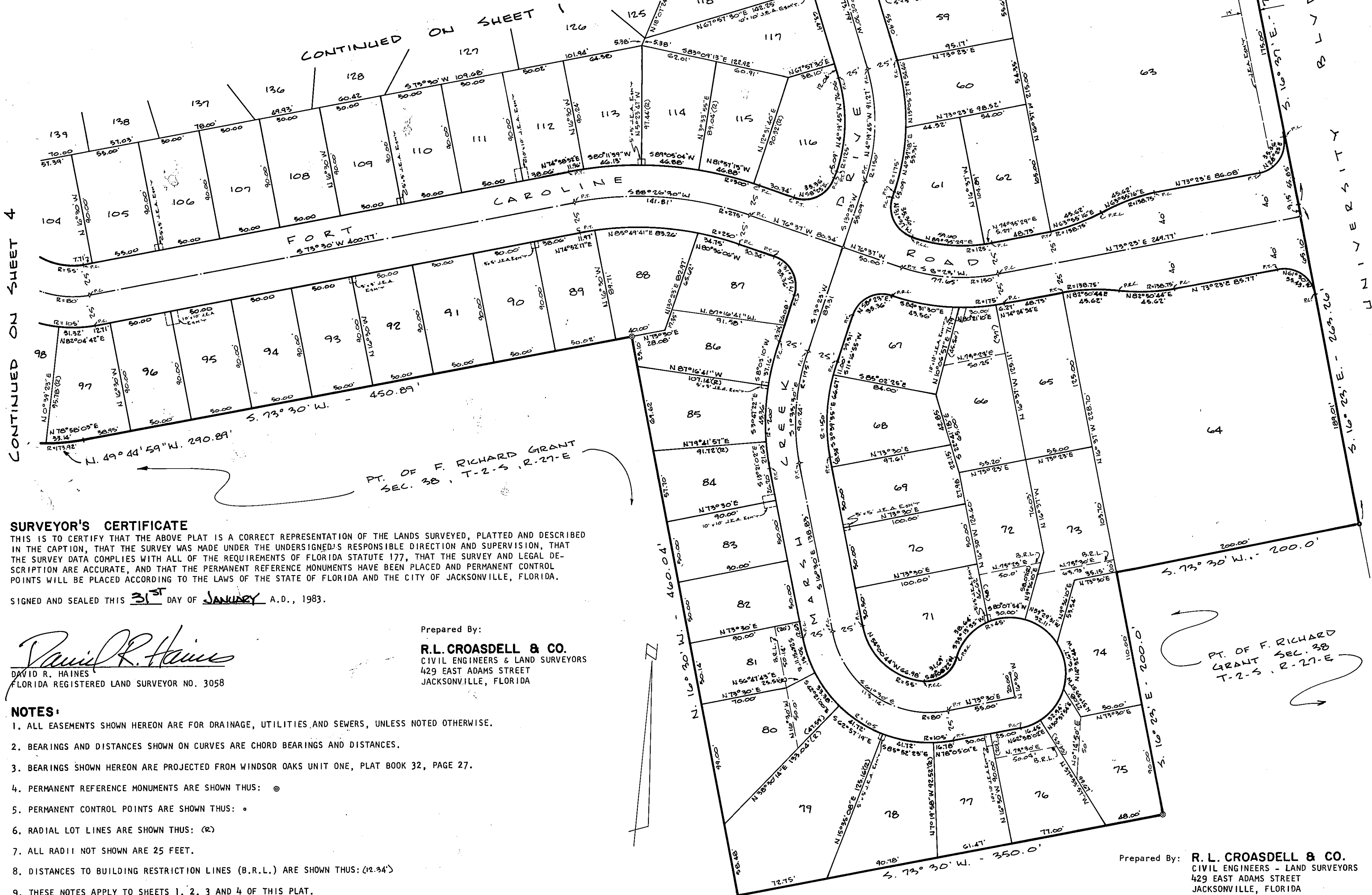
## CITY OF JACKSONVILLE, DUVAL COUNTY, FLORIDA



GRAPHIC SCALE  
SCALE 1" = 50'

PLAT BOOK 38 PAGE 58A

SHEET 2 OF 6 SHEETS



### SURVEYOR'S CERTIFICATE

THIS IS TO CERTIFY THAT THE ABOVE PLAT IS A CORRECT REPRESENTATION OF THE LANDS SURVEYED, PLATTED AND DESCRIBED IN THE CAPTION, THAT THE SURVEY WAS MADE UNDER THE UNDERSIGNED'S RESPONSIBLE DIRECTION AND SUPERVISION, THAT THE SURVEY DATA COMPLIES WITH ALL OF THE REQUIREMENTS OF FLORIDA STATUTE 177, THAT THE SURVEY AND LEGAL DESCRIPTION ARE ACCURATE, AND THAT THE PERMANENT REFERENCE MONUMENTS HAVE BEEN PLACED AND PERMANENT CONTROL POINTS WILL BE PLACED ACCORDING TO THE LAWS OF THE STATE OF FLORIDA AND THE CITY OF JACKSONVILLE, FLORIDA.

SIGNED AND SEALED THIS 31<sup>ST</sup> DAY OF JANUARY A.D., 1983.

*David R. Haines*  
DAVID R. HAINES  
FLORIDA REGISTERED LAND SURVEYOR NO. 3058

Prepared By:  
**R.L. CROASDELL & CO.**  
CIVIL ENGINEERS & LAND SURVEYORS  
429 EAST ADAMS STREET  
JACKSONVILLE, FLORIDA

### NOTES:

1. ALL EASEMENTS SHOWN HEREON ARE FOR DRAINAGE, UTILITIES AND SEWERS, UNLESS NOTED OTHERWISE.
2. BEARINGS AND DISTANCES SHOWN ON CURVES ARE CHORD BEARINGS AND DISTANCES.
3. BEARINGS SHOWN HEREON ARE PROJECTED FROM WINDSOR OAKS UNIT ONE, PLAT BOOK 32, PAGE 27.
4. PERMANENT REFERENCE MONUMENTS ARE SHOWN THUS: ⊙
5. PERMANENT CONTROL POINTS ARE SHOWN THUS: •
6. RADIAL LOT LINES ARE SHOWN THUS: (R)
7. ALL RADII NOT SHOWN ARE 25 FEET.
8. DISTANCES TO BUILDING RESTRICTION LINES (B.R.L.) ARE SHOWN THUS: (12.34')
9. THESE NOTES APPLY TO SHEETS 1, 2, 3 AND 4 OF THIS PLAT.

Prepared By: **R. L. CROASDELL & CO.**  
CIVIL ENGINEERS - LAND SURVEYORS  
429 EAST ADAMS STREET  
JACKSONVILLE, FLORIDA

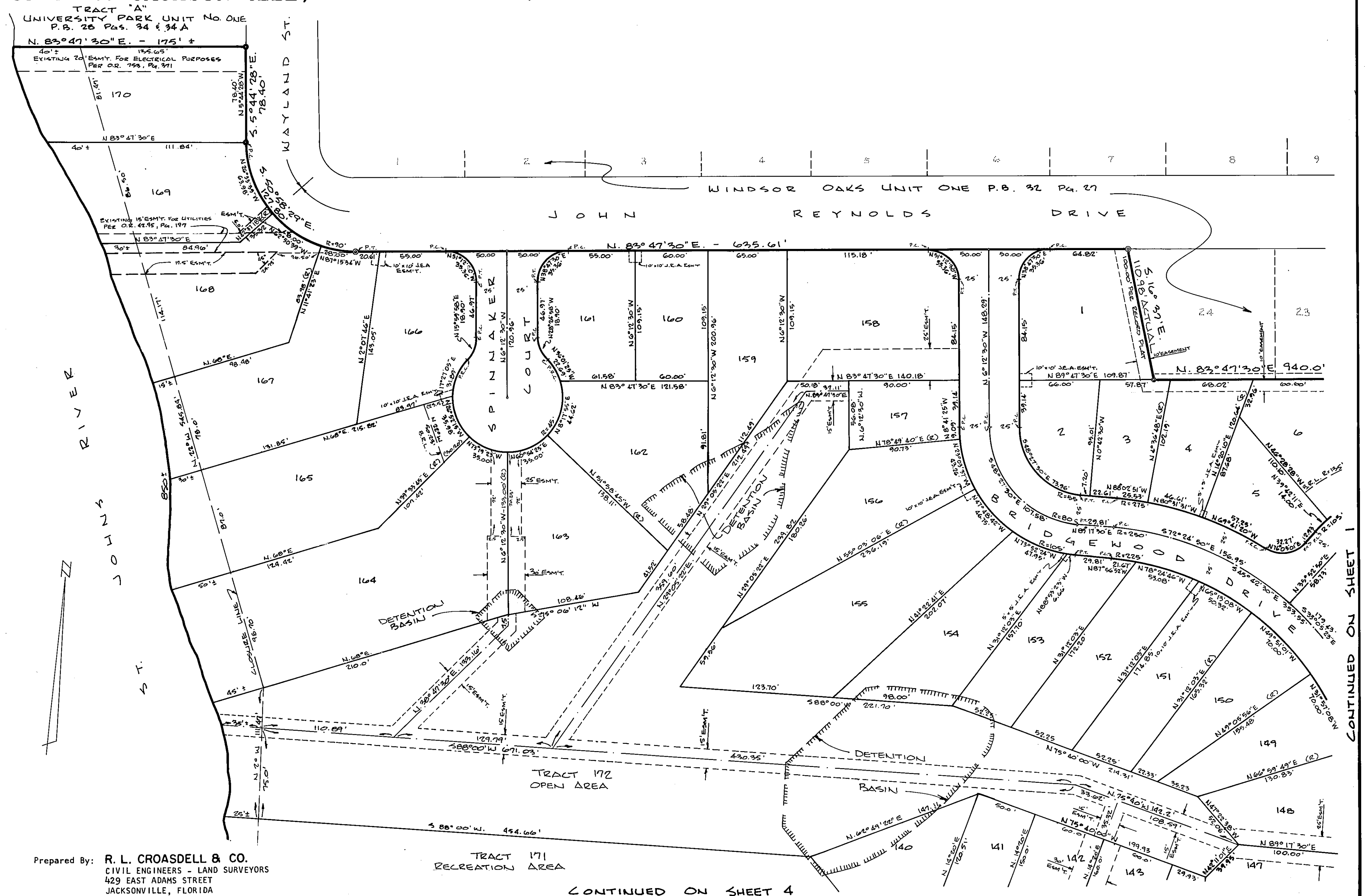
# MARSH CREEK

BEING A REPLAT OF A PART OF LOT 1, ST. ISABEL AS RECORDED IN DEED BOOK "R", PAGE 860 OF THE FORMER PUBLIC RECORDS AND A PART OF THE F. RICHARD GRANT, SECTION 38, TOWNSHIP 2 SOUTH, RANGE 27 EAST.



GRAPHIC SCALE  
SCALE 1" = 50'

## CITY OF JACKSONVILLE, DUVAL COUNTY, FLORIDA



Prepared By: **R. L. CROASDELL & CO.**  
CIVIL ENGINEERS - LAND SURVEYORS  
429 EAST ADAMS STREET  
JACKSONVILLE, FLORIDA

CONTINUED ON SHEET 4

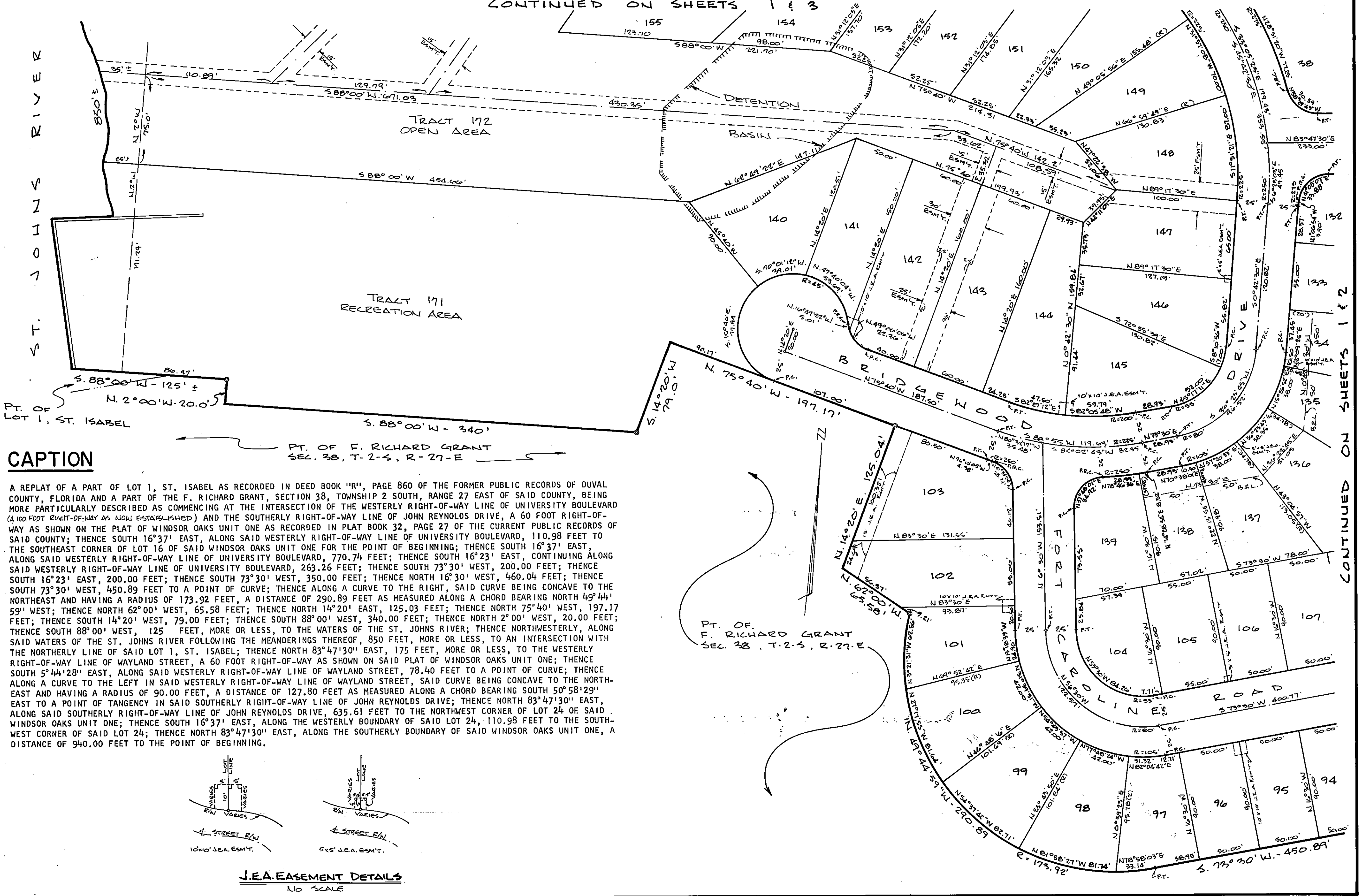
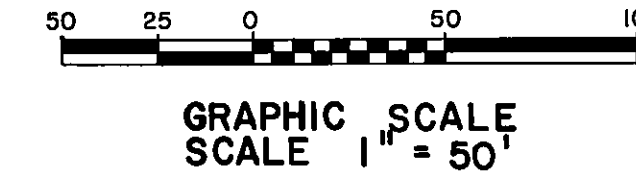
CONTINUED ON SHEET 1

# MARSH CREEK

BEING A REPLAT OF A PART OF LOT 1, ST. ISABEL AS RECORDED IN DEED BOOK "R", PAGE 860 OF THE FORMER PUBLIC RECORDS AND A PART OF THE F. RICHARD GRANT, SECTION 38, TOWNSHIP 2 SOUTH, RANGE 27 EAST.

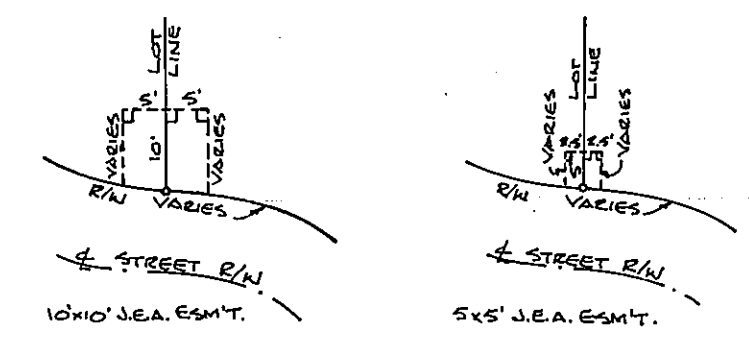
## CITY OF JACKSONVILLE, DUVAL COUNTY, FLORIDA

CONTINUED ON SHEETS 1 & 3



### CAPTION

A REPLAT OF A PART OF LOT 1, ST. ISABEL AS RECORDED IN DEED BOOK "R", PAGE 860 OF THE FORMER PUBLIC RECORDS OF DUVAL COUNTY, FLORIDA AND A PART OF THE F. RICHARD GRANT, SECTION 38, TOWNSHIP 2 SOUTH, RANGE 27 EAST OF SAID COUNTY, BEING MORE PARTICULARLY DESCRIBED AS COMMENCING AT THE INTERSECTION OF THE WESTERLY RIGHT-OF-WAY LINE OF UNIVERSITY BOULEVARD (A 100 FOOT RIGHT-OF-WAY AS NOW ESTABLISHED) AND THE SOUTHERLY RIGHT-OF-WAY LINE OF JOHN REYNOLDS DRIVE, A 60 FOOT RIGHT-OF-WAY AS SHOWN ON THE PLAT OF WINDSOR OAKS UNIT ONE AS RECORDED IN PLAT BOOK 32, PAGE 27 OF THE CURRENT PUBLIC RECORDS OF SAID COUNTY; THENCE SOUTH 16°37' EAST, ALONG SAID WESTERLY RIGHT-OF-WAY LINE OF UNIVERSITY BOULEVARD, 110.98 FEET TO THE SOUTHEAST CORNER OF LOT 16 OF SAID WINDSOR OAKS UNIT ONE FOR THE POINT OF BEGINNING; THENCE SOUTH 16°37' EAST, ALONG SAID WESTERLY RIGHT-OF-WAY LINE OF UNIVERSITY BOULEVARD, 263.26 FEET; THENCE SOUTH 73°30' WEST, 200.00 FEET; THENCE SOUTH 16°23' EAST, 200.00 FEET; THENCE SOUTH 73°30' WEST, 350.00 FEET; THENCE NORTH 16°30' WEST, 460.04 FEET; THENCE SOUTH 73°30' WEST, 450.89 FEET TO A POINT OF CURVE; THENCE ALONG A CURVE TO THE RIGHT, SAID CURVE BEING CONCAVE TO THE NORTHEAST AND HAVING A RADIUS OF 173.92 FEET, A DISTANCE OF 290.89 FEET AS MEASURED ALONG A CHORD BEARING NORTH 49°44' 59" WEST; THENCE NORTH 62°00' WEST, 65.58 FEET; THENCE NORTH 14°20' EAST, 125.03 FEET; THENCE NORTH 75°40' WEST, 197.17 FEET; THENCE SOUTH 14°20' WEST, 79.00 FEET; THENCE SOUTH 88°00' WEST, 340.00 FEET; THENCE NORTH 2°00' WEST, 20.00 FEET; THENCE SOUTH 88°00' WEST, 125 FEET, MORE OR LESS, TO THE WATERS OF THE ST. JOHNS RIVER; THENCE NORTHWESTERLY, ALONG SAID WATERS OF THE ST. JOHNS RIVER FOLLOWING THE MEANDERINGS THEREOF, 850 FEET, MORE OR LESS, TO AN INTERSECTION WITH THE NORTHERLY LINE OF SAID LOT 1, ST. ISABEL; THENCE NORTH 83°47'30" EAST, 175 FEET, MORE OR LESS, TO THE WESTERLY RIGHT-OF-WAY LINE OF WAYLAND STREET, A 60 FOOT RIGHT-OF-WAY AS SHOWN ON SAID PLAT OF WINDSOR OAKS UNIT ONE; THENCE SOUTH 5°44'28" EAST, ALONG SAID WESTERLY RIGHT-OF-WAY LINE OF WAYLAND STREET, 78.40 FEET TO A POINT OF CURVE; THENCE ALONG A CURVE TO THE LEFT IN SAID WESTERLY RIGHT-OF-WAY LINE OF WAYLAND STREET, SAID CURVE BEING CONCAVE TO THE NORTH-EAST AND HAVING A RADIUS OF 90.00 FEET, A DISTANCE OF 127.80 FEET AS MEASURED ALONG A CHORD BEARING SOUTH 50°58'29" EAST TO A POINT OF TANGENCY IN SAID SOUTHERLY RIGHT-OF-WAY LINE OF JOHN REYNOLDS DRIVE; THENCE NORTH 83°47'30" EAST, ALONG SAID SOUTHERLY RIGHT-OF-WAY LINE OF JOHN REYNOLDS DRIVE, 635.61 FEET TO THE NORTHWEST CORNER OF LOT 24 OF SAID WINDSOR OAKS UNIT ONE; THENCE SOUTH 16°37' EAST, ALONG THE WESTERLY BOUNDARY OF SAID LOT 24, 110.98 FEET TO THE SOUTHWEST CORNER OF SAID LOT 24; THENCE NORTH 83°47'30" EAST, ALONG THE SOUTHERLY BOUNDARY OF SAID WINDSOR OAKS UNIT ONE, A DISTANCE OF 940.00 FEET TO THE POINT OF BEGINNING.



J.E.A. EASEMENT DETAILS  
NO SCALE

CONTINUED ON SHEETS 1 & 2

# MARSH CREEK

BEING A REPLAT OF A PART OF LOT 1, ST. ISABEL AS RECORDED IN DEED BOOK "R", PAGE 860 OF THE FORMER PUBLIC RECORDS AND A PART OF THE F. RICHARD GRANT, SECTION 38, TOWNSHIP 2 SOUTH, RANGE 27 EAST.

## CITY OF JACKSONVILLE, DUVAL COUNTY, FLORIDA

### ADOPTION AND DEDICATION:

THIS IS TO CERTIFY THAT MONTGOMERY HOMES, INC., A CORPORATION UNDER THE LAWS OF THE STATE OF FLORIDA, IS THE LAWFUL OWNER, AS A TENANT IN COMMON, OF THE LANDS DESCRIBED IN THE CAPTION HEREON, KNOWN AS MARSH CREEK, AND THAT IT HAS CAUSED THE SAME TO BE SURVEYED AND SUBDIVIDED AND THAT THIS PLAT, MADE IN ACCORDANCE WITH SAID SURVEY, IS HEREBY ADOPTED AS THE TRUE AND CORRECT PLAT OF SAID LANDS, AND THAT ALL STREETS AND EASEMENTS FOR DRAINAGE, UTILITIES, SEWERS, AND NON-ACCESS SHOWN ON SAID PLAT ARE HEREBY, IRREVOCABLY AND WITHOUT RESERVATION, DEDICATED TO THE CITY OF JACKSONVILLE AND ITS SUCCESSORS. J.E.A. EASEMENTS ARE DEDICATED TO THE JACKSONVILLE ELECTRIC AUTHORITY AND ITS SUCCESSORS FOR USE IN ITS UNDERGROUND DISTRIBUTION SYSTEM.

IN WITNESS THEREOF, MONTGOMERY HOMES, INC., HAS CAUSED THESE PRESENTS TO BE SIGNED BY ITS PRESIDENT, BY AND WITH THE AUTHORITY OF ITS BOARD OF DIRECTORS, IN ITS NAME AND WITH ITS CORPORATE SEAL AFFIXED THIS 27<sup>th</sup> DAY OF JANUARY A.D., 1983.

SIGNED AND SEALED IN THE PRESENCE OF:

MONTGOMERY HOMES, INC.

JM Ellis  
WITNESS

Mitchell R. Montgomery  
PRESIDENT

William E. Boyd  
WITNESS

### STATE OF FLORIDA COUNTY OF DUVAL

THE FOREGOING INSTRUMENT WAS ACKNOWLEDGED BEFORE ME THIS 27<sup>th</sup> DAY OF January A.D., 1983, BY MITCHELL R. MONTGOMERY, PRESIDENT, OF MONTGOMERY HOMES, INC., A FLORIDA CORPORATION ON BEHALF OF THE CORPORATION.

Nancy A. Palmarstein  
NOTARY PUBLIC, STATE OF FLORIDA AT LARGE  
MY COMMISSION EXPIRES November 16, 1983

### ADOPTION AND DEDICATION:

THIS IS TO CERTIFY THAT D. F. SERVICES, INC., A CORPORATION UNDER THE LAWS OF THE STATE OF FLORIDA, IS THE LAWFUL OWNER, AS A TENANT IN COMMON, OF THE LANDS DESCRIBED IN THE CAPTION HEREON, KNOWN AS MARSH CREEK, AND THAT IT HAS CAUSED THE SAME TO BE SURVEYED AND SUBDIVIDED AND THAT THIS PLAT, MADE IN ACCORDANCE WITH SAID SURVEY, IS HEREBY ADOPTED AS THE TRUE AND CORRECT PLAT OF SAID LANDS, AND THAT ALL STREETS AND EASEMENTS FOR DRAINAGE, UTILITIES, SEWERS, AND NON-ACCESS SHOWN ON SAID PLAT ARE HEREBY, IRREVOCABLY AND WITHOUT RESERVATIONS, DEDICATED TO THE CITY OF JACKSONVILLE AND ITS SUCCESSORS. J.E.A. EASEMENTS ARE DEDICATED TO THE JACKSONVILLE ELECTRIC AUTHORITY AND ITS SUCCESSORS FOR USE IN ITS UNDERGROUND DISTRIBUTION SYSTEM.

IN WITNESS THEREOF, D. F. SERVICES, INC., HAS CAUSED THESE PRESENTS TO BE SIGNED BY ITS VICE PRESIDENT, BY AND WITH THE AUTHORITY OF ITS BOARD OF DIRECTORS, IN ITS NAME AND WITH ITS CORPORATE SEAL AFFIXED THIS 27<sup>th</sup> DAY OF January A.D., 1983.

SIGNED AND SEALED IN THE PRESENCE OF:

D. F. SERVICES, INC.

Patsy A. Nite  
WITNESS

John R. Lamb  
VICE PRESIDENT

Jamie A. Boyd  
WITNESS

### STATE OF FLORIDA COUNTY OF DUVAL

THE FOREGOING INSTRUMENT WAS ACKNOWLEDGED BEFORE ME THIS 27<sup>th</sup> DAY OF January A.D., 1983, BY JOHN R. LAMB, VICE PRESIDENT OF D. F. SERVICES, INC., A FLORIDA CORPORATION, ON BEHALF OF THE CORPORATION.

Patsy A. Nite  
NOTARY PUBLIC, STATE OF FLORIDA AT LARGE  
MY COMMISSION EXPIRES Feb 17, 1985

### DEDICATION FOR MORTGAGEE:

THIS IS TO CERTIFY THAT DUVAL FEDERAL SAVINGS AND LOAN ASSOCIATION OF JACKSONVILLE, A CORPORATION EXISTING UNDER THE LAWS OF THE UNITED STATES OF AMERICA, BEING THE MORTGAGEE OF THE LANDS DESCRIBED IN THE FOREGOING CAPTION OF THIS PLAT, DOES HEREBY JOIN IN AND MAKE ITSELF A PARTY TO THE DEDICATION OF SAID LANDS AND PLAT, TO BE KNOWN AS MARSHCREEK FOR THE USES AND PURPOSES THEREIN EXPRESSED AND DEDICATE ALL STREETS, AND EASEMENTS FOR DRAINAGE, UTILITIES, SEWERS, AND NON-ACCESS SHOWN ON THIS PLAT TO THE CITY OF JACKSONVILLE, FLORIDA, AND ITS SUCCESSORS. J.E.A. EASEMENTS ARE DEDICATED TO THE JACKSONVILLE ELECTRIC AUTHORITY AND ITS SUCCESSORS FOR USE IN ITS UNDERGROUND DISTRIBUTION SYSTEM.

IN WITNESS THEREOF, DUVAL FEDERAL SAVINGS AND LOAN ASSOCIATION OF JACKSONVILLE, HAS CAUSED THESE PRESENTS TO BE SIGNED BY ITS EXECUTIVE VICE PRESIDENT, BY AND WITH THE AUTHORITY OF ITS BOARD OF DIRECTORS, IN ITS NAME AND WITH ITS CORPORATE SEAL AFFIXED THIS 27<sup>th</sup> DAY OF January A.D., 1983.

SIGNED AND SEALED IN THE PRESENCE OF:

DUVAL FEDERAL SAVINGS AND LOAN ASSOCIATION OF JACKSONVILLE

Patsy A. Nite  
WITNESS

John R. Lamb  
EXECUTIVE VICE PRESIDENT

Jamie A. Boyd  
WITNESS

### STATE OF FLORIDA COUNTY OF DUVAL

THE FOREGOING INSTRUMENT WAS ACKNOWLEDGED BEFORE ME THIS 27<sup>th</sup> DAY OF January A.D., 1983, BY JOHN R. LAMB, EXECUTIVE VICE PRESIDENT OF DUVAL FEDERAL SAVINGS AND LOAN ASSOCIATION OF JACKSONVILLE, A CORPORATION EXISTING UNDER THE LAWS OF THE UNITED STATES OF AMERICA, ON BEHALF OF THE CORPORATION.

Patsy A. Nite  
NOTARY PUBLIC, STATE OF FLORIDA AT LARGE  
MY COMMISSION EXPIRES Feb. 17, 1985

### DEVELOPER'S CERTIFICATE

THIS IS TO CERTIFY THAT D. F. SERVICES, INC. AND MONTGOMERY HOMES, INC. HAVE FURNISHED THE CITY OF JACKSONVILLE PERSONAL BONDS SECURED WITH LETTERS OF CREDIT AS SURETY THAT THE PROPOSED IMPROVEMENTS IN PUBLIC SPACE, INCLUDING SIDEWALKS, SHALL BE CONSTRUCTED ACCORDING TO THE APPROVED PLANS AND SPECIFICATIONS. SAID BONDS ARE EQUIVALENT TO 100% OF THE REMAINING ENGINEERING AND CONSTRUCTION COST, AND THE COST OF SETTING PERMANENT CONTROL POINTS. SIGNED THIS 13<sup>th</sup> DAY OF MARCH A.D., 1983.

Mitchell R. Montgomery  
PRESIDENT  
MONTGOMERY HOMES, INC.

John R. Lamb  
VICE PRESIDENT  
D. F. SERVICES, INC.

Alvin L. Smith  
DIRECTOR OF PUBLIC WORKS

### APPROVED FOR RECORD

THIS IS TO CERTIFY THAT THIS PLAT HAS BEEN EXAMINED AND APPROVED BY THE CITY OF JACKSONVILLE, DUVAL COUNTY, FLORIDA, PURSUANT TO ORDINANCE NO. 83-163-51 OF SAID CITY, ADOPTED BY ITS COUNCIL AND APPROVED BY ITS MAYOR THIS 20<sup>th</sup> DAY OF FEBRUARY A.D., 1983.

Quinn D. Bland  
MAYOR OF THE CITY OF JACKSONVILLE

Ronald R. Johnson  
SECRETARY OF THE COUNCIL  
CITY OF JACKSONVILLE

83-16324

### CLERK'S CERTIFICATE

THIS IS TO CERTIFY THAT THIS PLAT HAS BEEN EXAMINED AND APPROVED BY THE CITY OF JACKSONVILLE, DUVAL COUNTY, FLORIDA, AND SUBMITTED TO ME FOR RECORDING AND IS RECORDED IN PLAT BOOK 38, PAGES 58, 58A OF THE PUBLIC RECORDS OF DUVAL COUNTY, FLORIDA, THIS 2<sup>nd</sup> DAY OF MARCH A.D., 1983. 58B, 58C, 58D, 58E

S. Morgan Slaughter  
S. MORGAN SLAUGHTER,  
CLERK OF THE CIRCUIT COURT

BY: Doris Lacfield  
DEPUTY CLERK

# MARSH CREEK

BEING A REPLAT OF A PART OF LOT 1, ST. ISABEL AS RECORDED IN DEED BOOK "R", PAGE 860 OF THE FORMER PUBLIC RECORDS AND A PART OF THE F. RICHARD GRANT, SECTION 38, TOWNSHIP 2 SOUTH, RANGE 27 EAST.

## CITY OF JACKSONVILLE, DUVAL COUNTY, FLORIDA

### DEDICATION OF DRAINAGE EASEMENTS AND HOLD HARMLESS AGREEMENT

THE DRAINAGE EASEMENTS THROUGH AND OVER THE DETENTION BASINS SHOWN ON THIS PLAT ARE HEREBY IRREVOCABLY DEDICATED TO THE CITY OF JACKSONVILLE AND ITS SUCCESSORS, AND ARE SUBJECT TO THE FOLLOWING COVENANTS WHICH SHALL RUN WITH THE LAND (1) THE DRAINAGE EASEMENTS HEREBY DEDICATED SHALL PERMIT THE CITY OF JACKSONVILLE AND ITS SUCCESSORS TO DISCHARGE INTO SAID DETENTION BASINS WHICH THESE EASEMENTS TRAVERSE, ALL WATER WHICH MAY FALL OR COME UPON ALL STREETS HEREBY DEDICATED, TOGETHER WITH ALL SOIL, NUTRIENTS, CHEMICALS AND ALL OTHER SUBSTANCES WHICH MAY FLOW OR PASS FROM STREETS, FROM ADJACENT LAND OR FROM ANY OTHER SOURCE OF PUBLIC WATERS INTO OR THROUGH SAID DETENTION BASINS, WITHOUT ANY LIABILITY WHATSOEVER ON THE PART OF THE CITY OF JACKSONVILLE AND ITS SUCCESSORS FOR ANY DAMAGES, INJURIES OR LOSSES TO PERSONS OR PROPERTY RESULTING FROM THE ACCEPTANCE OR USE OF THESE DRAINAGE EASEMENTS BY THE CITY OF JACKSONVILLE AND ITS SUCCESSORS, (2) THE DETENTION BASINS SHOWN ON THIS PLAT ARE OWNED IN FEE SIMPLE TITLE BY THE ABUTTING PROPERTY OWNERS AND THE CITY OF JACKSONVILLE BY ACCEPTANCE OF THIS PLAT ASSUMES NO RESPONSIBILITY FOR THE REMOVAL OR TREATMENT OF AQUATIC PLANTS AND ANIMALS, SOIL, CHEMICALS OR ANY OTHER SUBSTANCE OR THING THAT MAY EVEN BE OR COME WITHIN SAID DETENTION BASINS WHICH THESE EASEMENTS TRAVERSE NOR ANY RESPONSIBILITY FOR MAINTENANCE OR PRESERVATION OF THE WATER PURITY, WATER LEVEL OR WATER DEPTH, WHICH RESPONSIBILITIES SHALL BE THOSE OF THE ABUTTING PROPERTY OWNERS AND (3) THE CITY OF JACKSONVILLE AND ITS SUCCESSORS SHALL NOT BE LIABLE OR RESPONSIBLE FOR THE CREATION, OPERATION, FAILURE OR DESTRUCTION OF ANY WATER LEVEL CONTROL EQUIPMENT WHICH MAY BE CONSTRUCTED OR INSTALLED BY THE DEVELOPER OR ANY OTHER PERSON WITHIN THE AREA OF THE LANDS HEREBY PLATTED OR OF THE DETENTION BASINS SHOWN BY THIS PLAT, BUT SHALL HAVE THE RIGHT TO MODIFY THE EXISTENCE OF THE DETENTION BASINS AND THAT WHICH RETAINS THEM TO EFFECT ADEQUATE DRAINAGE, INCLUDING BUT NOT LIMITED TO THE RIGHT TO REMOVE ANY WATER LEVEL CONTROL STRUCTURES OR ANY PART THEREOF.

IN WITNESS WHEREOF, MONTGOMERY HOMES, INC. HAS CAUSED THESE PRESENTS TO BE SIGNED BY ITS PRESIDENT, BY AND WITH THE AUTHORITY OF ITS BOARD OF DIRECTORS, IN ITS NAME AND WITH ITS CORPORATE SEAL AFFIXED THIS 27th DAY OF JANUARY A.D., 1983.

SIGNED AND SEALED IN THE PRESENCE OF:

MONTGOMERY HOMES, INC.

WITNESS [Signature]

[Signature]  
PRESIDENT

WITNESS [Signature]

### STATE OF FLORIDA COUNTY OF DUVAL

THE FOREGOING INSTRUMENT WAS ACKNOWLEDGED BEFORE ME THIS 27th DAY OF January A.D., 1983 BY MITCHELL R. MONTGOMERY, PRESIDENT OF MONTGOMERY HOMES, INC., A FLORIDA CORPORATION, ON BEHALF OF THE CORPORATION.

NOTARY PUBLIC, STATE OF FLORIDA AT LARGE: [Signature]  
MY COMMISSION EXPIRES December 16, 1983

### DEDICATION OF DRAINAGE EASEMENTS AND HOLD HARMLESS AGREEMENT

THE DRAINAGE EASEMENTS THROUGH AND OVER THE DETENTION BASINS SHOWN ON THIS PLAT ARE HEREBY IRREVOCABLY DEDICATED TO THE CITY OF JACKSONVILLE AND ITS SUCCESSORS, AND ARE SUBJECT TO THE FOLLOWING COVENANTS WHICH SHALL RUN WITH THE LAND (1) THE DRAINAGE EASEMENTS HEREBY DEDICATED SHALL PERMIT THE CITY OF JACKSONVILLE AND ITS SUCCESSORS TO DISCHARGE INTO SAID DETENTION BASINS WHICH THESE EASEMENTS TRAVERSE, ALL WATER WHICH MAY FALL OR COME UPON ALL STREETS HEREBY DEDICATED, TOGETHER WITH ALL SOIL, NUTRIENTS, CHEMICALS AND ALL OTHER SUBSTANCES WHICH MAY FLOW OR PASS FROM STREETS, FROM ADJACENT LAND OR FROM ANY OTHER SOURCE OF PUBLIC WATERS INTO OR THROUGH SAID DETENTION BASINS, WITHOUT ANY LIABILITY WHATSOEVER ON THE PART OF THE CITY OF JACKSONVILLE AND ITS SUCCESSORS FOR ANY DAMAGES, INJURIES OR LOSSES TO PERSONS OR PROPERTY RESULTING FROM THE ACCEPTANCE OR USE OF THESE DRAINAGE EASEMENTS BY THE CITY OF JACKSONVILLE AND ITS SUCCESSORS, (2) THE DETENTION BASINS SHOWN ON THIS PLAT ARE OWNED IN FEE SIMPLE TITLE BY THE ABUTTING PROPERTY OWNERS AND THE CITY OF JACKSONVILLE BY ACCEPTANCE OF THIS PLAT ASSUMES NO RESPONSIBILITY FOR THE REMOVAL OR TREATMENT OF AQUATIC PLANTS AND ANIMALS, SOIL, CHEMICALS OR ANY OTHER SUBSTANCE OR THING THAT MAY EVEN BE OR COME WITHIN SAID DETENTION BASINS WHICH THESE EASEMENTS TRAVERSE NOR ANY RESPONSIBILITY FOR MAINTENANCE OR PRESERVATION OF THE WATER PURITY, WATER LEVEL OR WATER DEPTH, WHICH RESPONSIBILITIES SHALL BE THOSE OF THE ABUTTING PROPERTY OWNERS AND (3) THE CITY OF JACKSONVILLE AND ITS SUCCESSORS SHALL NOT BE LIABLE OR RESPONSIBLE FOR THE CREATION, OPERATION, FAILURE OR DESTRUCTION OF ANY WATER LEVEL CONTROL EQUIPMENT WHICH MAY BE CONSTRUCTED OR INSTALLED BY THE DEVELOPER OR ANY OTHER PERSON WITHIN THE AREA OF THE LANDS HEREBY PLATTED OR OF THE DETENTION BASINS SHOWN BY THIS PLAT, BUT SHALL HAVE THE RIGHT TO MODIFY THE EXISTENCE OF THE DETENTION BASINS AND THAT WHICH RETAINS THEM TO EFFECT ADEQUATE DRAINAGE, INCLUDING BUT NOT LIMITED TO THE RIGHT TO REMOVE ANY WATER LEVEL CONTROL STRUCTURES OR ANY PART THEREOF.

IN WITNESS WHEREOF, D. F. SERVICES, INC. HAS CAUSED THESE PRESENTS TO BE SIGNED BY ITS VICE PRESIDENT, BY AND WITH THE AUTHORITY OF ITS BOARD OF DIRECTORS, IN ITS NAME AND WITH ITS CORPORATE SEAL AFFIXED THIS 27th DAY OF January A.D., 1983.

SIGNED AND SEALED IN THE PRESENCE OF:

D. F. SERVICES, INC.

WITNESS [Signature]

[Signature]  
VICE PRESIDENT

WITNESS [Signature]

### STATE OF FLORIDA COUNTY OF DUVAL

THE FOREGOING INSTRUMENT WAS ACKNOWLEDGED BEFORE ME THIS 27th DAY OF January A.D., 1983 BY JOHN R. LAMB, VICE PRESIDENT OF D. F. SERVICES, INC., A FLORIDA CORPORATION, ON BEHALF OF THE CORPORATION.

NOTARY PUBLIC, STATE OF FLORIDA AT LARGE: [Signature]  
MY COMMISSION EXPIRES Feb. 17, 1983

