

OLD MILL BRANCH UNIT THREE

BEING A PORTION OF SECTION 7, TOWNSHIP 3 SOUTH, RANGE 28 EAST, CITY OF JACKSONVILLE, DUVAL COUNTY, FLORIDA

CAPTION:

A PORTION OF SECTION 7, TOWNSHIP 3 SOUTH, RANGE 28 EAST, JACKSONVILLE, DUVAL COUNTY, FLORIDA AND BEING MORE PARTICULARLY DESCRIBED AS FOLLOWS: FOR THE POINT OF BEGINNING COMMENCE AT THE SOUTHEAST CORNER OF LOT 86, OLD MILL BRANCH UNIT TWO, ACCORDING TO MAP THEREOF RECORDED IN PLAT BOOK 55, PAGES 35 THROUGH 35B OF THE CURRENT PUBLIC RECORDS OF SAID COUNTY; THENCE THE FOLLOWING 2 COURSES ALONG THE EASTERLY LINE OF SAID OLD MILL BRANCH UNIT TWO: COURSE NO. 1 - NORTH 20°06'04" EAST, 248.13 FEET; COURSE NO. 2 - NORTH 01°21'18" WEST, 662.34 FEET TO THE SOUTH LINE OF LANDS OF JEA PER DEED RECORDED IN THE OFFICIAL RECORDS OF SAID COUNTY IN BOOK 10053, PAGE 623; THENCE NORTH 88°39'29" EAST, ALONG SAID SOUTHERLY LINE, 1,173.40 FEET; THENCE SOUTH 01°20'56" EAST, 135.07 FEET; THENCE SOUTH 81°55'36" WEST, 89.62 FEET; THENCE IN A SOUTHWESTERLY DIRECTION, ALONG THE ARC OF A CURVE, SAID CURVE BEING CONCAVE SOUTHEASTERLY AND HAVING A RADIUS OF 65.00 FEET, A CHORD BEARING AND DISTANCE OF SOUTH 66°00'02" WEST, 35.67 FEET; THENCE SOUTH 50°04'27" WEST, 130.40 FEET; THENCE IN A SOUTHWESTERLY DIRECTION, ALONG THE ARC OF A CURVE, SAID CURVE BEING CONCAVE SOUTHEASTERLY AND HAVING A RADIUS OF 700.00 FEET, A CHORD BEARING AND DISTANCE OF SOUTH 24°39'26" WEST, 600.88 FEET; THENCE SOUTH 00°45'36" EAST, 401.31 FEET; THENCE IN A SOUTHERLY DIRECTION, ALONG THE ARC OF A CURVE, SAID CURVE BEING CONCAVE EASTERLY AND HAVING A RADIUS OF 100.00 FEET, A CHORD BEARING AND DISTANCE OF SOUTH 14°25'00" EAST, 47.22 FEET; THENCE SOUTH 60°12'34" WEST, 934.41 FEET TO THE EASTERLY LINE OF OLD MILL BRANCH UNIT ONE, ACCORDING TO MAP THEREOF RECORDED IN PLAT BOOK 54, PAGES 29 THROUGH 29B OF THE CURRENT PUBLIC RECORDS OF SAID COUNTY; THENCE THE FOLLOWING 9 COURSES ALONG THE SAID EASTERLY LINE OF OLD MILL BRANCH UNIT ONE: COURSE NO. 1 - NORTH 29°47'26" WEST, 142.50 FEET; COURSE NO. 2 - NORTH 18°23'50" WEST, 50.08 FEET; COURSE NO. 3 - NORTH 18°25'31" WEST, 135.76 FEET; COURSE NO. 4 - NORTH 73°40'49" EAST, 63.07 FEET; COURSE NO. 5 - NORTH 29°47'26" WEST, 55.89 FEET; COURSE NO. 6 - NORTH 88°51'56" EAST, 11.19 FEET; COURSE NO. 7 - NORTH 80°06'25" EAST, 127.81 FEET; COURSE NO. 8 - NORTH 45°21'17" EAST, 164.64 FEET; COURSE NO. 9 - NORTH 26°26'47" WEST, 308.76 FEET TO THE POINT OF BEGINNING.

ADOPTION AND DEDICATION:

THIS IS TO CERTIFY THAT OLD MILL BRANCH, LLP, UNDER THE LAWS OF THE STATE OF FLORIDA, IS THE LAWFUL OWNER OF THE LANDS DESCRIBED IN THE CAPTION HEREON KNOWN AS OLD MILL BRANCH UNIT THREE, AND THAT SUNTRUST BANK IS THE HOLDER OF THE MORTGAGE ON SAID LANDS, HAVING CAUSED THE SAME TO BE SURVEYED AND SUBDIVIDED. THIS PLAT BEING MADE IN ACCORDANCE WITH SAID SURVEY IS HEREBY ADOPTED AS A TRUE AND CORRECT PLAT OF THOSE LANDS.

ALL PRIVATE RIGHTS OF WAYS, BOULEVARDS, LANES, AND COURTS, PRIVATE DRAINAGE EASEMENTS, UNOBSTRUCTED PRIVATE DRAINAGE EASEMENTS SHOWN ON THIS PLAT ARE AND SHALL REMAIN PRIVATELY OWNED AND THE SOLE AND EXCLUSIVE PROPERTY OF THE APPLICABLE OWNER, THEIR SUCCESSORS AND ASSIGNS, IF ANY.

THOSE EASEMENTS DESIGNATED AS 'JEA-EE' ARE HEREBY IRREVOCABLY DEDICATED TO JEA, ITS SUCCESSORS AND ASSIGNS, FOR ITS EXCLUSIVE USE IN CONJUNCTION WITH ITS UNDERGROUND ELECTRICAL SYSTEM.

THOSE EASEMENTS DESIGNATED AS 'JEA-E' ARE HEREBY IRREVOCABLY DEDICATED TO JEA, ITS SUCCESSORS AND ASSIGNS, FOR ITS NON-EXCLUSIVE USE IN CONJUNCTION WITH ITS UNDERGROUND ELECTRICAL SYSTEM; PROVIDED HOWEVER, THAT NO PARALLEL UTILITIES MAY BE INSTALLED WITHIN SAID EASEMENTS.

TRACTS "A"(RECREATION AREA), "B"(EASEMENT TRACT), "C"(RECREATION AREA), "D"(WETLAND MITIGATION AREA) AND "E"(OPEN SPACE) NOT HEREBY DEDICATED AND ALL PRIVATE DRAINAGE EASEMENTS, PRIVATE LANDSCAPE EASEMENTS, OR OTHER PRIVATE EASEMENTS SHOWN HEREON, IF ANY, ARE AND SHALL REMAIN PRIVATELY OWNED AND THE SOLE AND EXCLUSIVE PROPERTY OF OLD MILL BRANCH, LLP, ITS SUCCESSORS AND ASSIGNS, IF ANY, OF SAID EASEMENTS.

IN WITNESS WHEREOF THE ABOVE NAMED OLD MILL BRANCH, LLP, HAVE CAUSED THESE PRESENTS TO BE SIGNED THIS 3rd DAY OF June A.D., 2003

FLOOD ZONE NOTE:

THE LANDS SHOWN HEREON LIE WITHIN FLOOD ZONE "X"(UNSHADED) AND SPECIAL FLOOD HAZARD AREA (SFHA) "AO" WITH FLOOD DEPTHS OF 2 FEET AS DEPICTED ON THE FLOOD INSURANCE RATE MAP (FIRM) COMMUNITY NUMBER 120077, PANEL NUMBER 0228, SUFFIX E, DATED AUGUST 15, 1989.

THE FIRM INFORMATION AND DELINEATIONS ON THIS PLAT ARE VALID ONLY FOR DATES UP TO AND INCLUDING THE EFFECTIVE RECORDING DATE OF THIS PLAT. THERE MAY BE SUBSEQUENT REVISIONS AFTER THIS DATE THAT WILL SUPERSEDE SAID INFORMATION. INQUIRIES FOR THIS SHOULD BE MADE TO THE COMMUNITY'S FLOODPLAIN MANAGEMENT REPOSITORY, DEPARTMENT OF PUBLIC WORKS, CITY OF JACKSONVILLE.

OLD MILL BRANCH, LLP, A LIMITED LIABILITY PARTNERSHIP

WITNESS: [Signature] NAME: Gregory C. Matovina

WITNESS: [Signature] TITLE: Administrative Partner

STATE OF FLORIDA
COUNTY OF DUVAL

THE FOREGOING INSTRUMENT WAS ACKNOWLEDGED BEFORE ME THIS 3rd DAY OF June A.D., 2003 BY Gregory E. Matovina AS Administrative Partner OF OLD MILL BRANCH, LLP, A LIMITED LIABILITY PARTNERSHIP, ON BEHALF OF THE PARTNERSHIP. [Signature] MY COMMISSION # CC987301 EXPIRES December 10, 2004 HE IS PERSONALLY KNOWN TO ME AND NO OATH WAS TAKEN. [Signature] BONDED THRU TROY FARM INSURANCE, INC.

[Signature] NOTARY PUBLIC, STATE OF FLORIDA AT LARGE MY COMMISSION EXPIRES: _____

SUNTRUST BANK

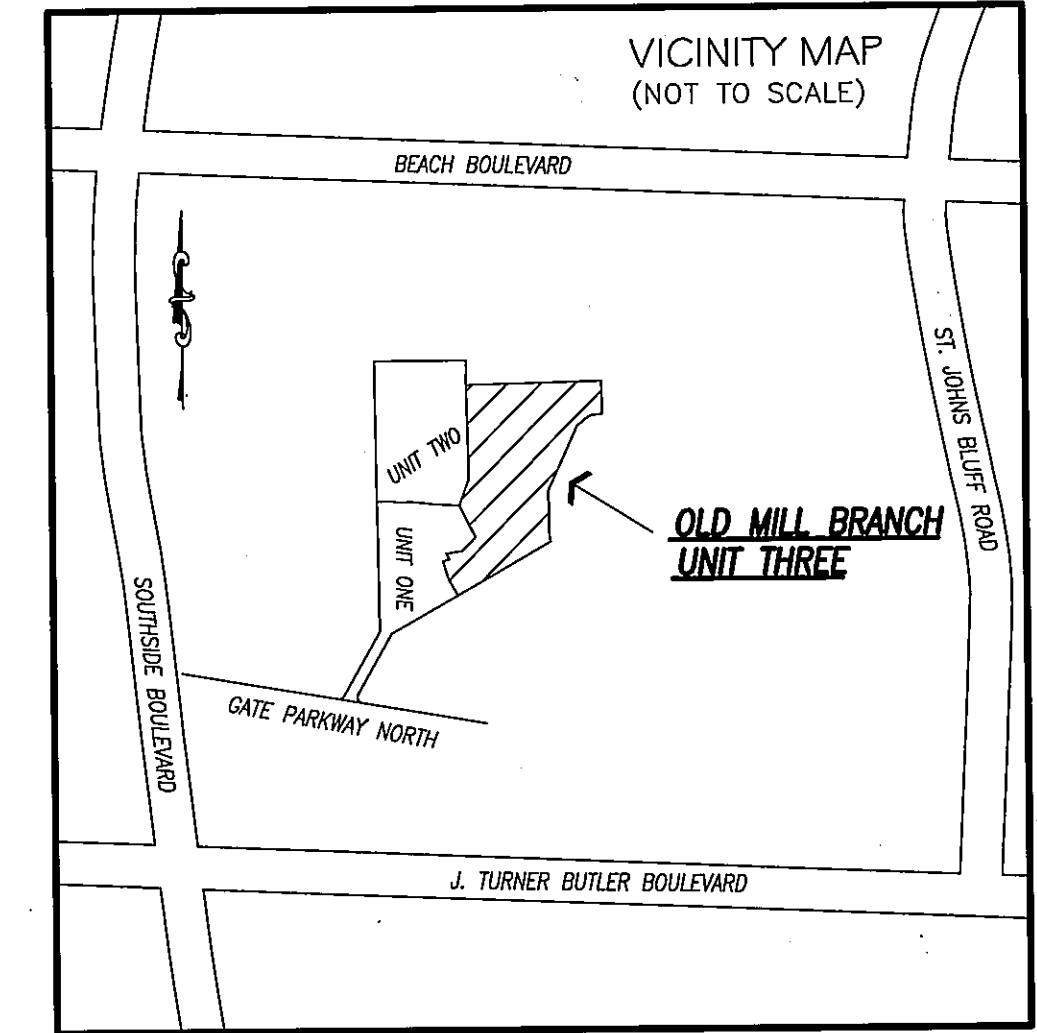
WITNESS: [Signature] [Signature] LYNN VERMILYA, VICE PRESIDENT, SUNTRUST BANK

WITNESS: [Signature]

STATE OF FLORIDA
COUNTY OF DUVAL

THE FOREGOING INSTRUMENT WAS ACKNOWLEDGED BEFORE ME THIS 3rd DAY OF June A.D., 2003 BY LYNN VERMILYA, VICE PRESIDENT OF SUNTRUST BANK SHE IS PERSONALLY KNOWN TO ME AND NO OATH WAS TAKEN.

[Signature] MY COMMISSION EXPIRES: _____



NOTICE:

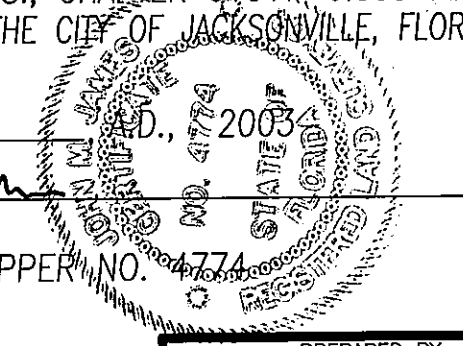
THIS PLAT AS RECORDED IN ITS GRAPHIC FORM IS THE OFFICIAL DEPICTION OF THE SUBDIVIDED LANDS DESCRIBED HEREIN AND WILL IN NO CIRCUMSTANCES BE SUPPLANTED IN AUTHORITY BY ANY OTHER GRAPHIC OR DIGITAL FORM OF THE PLAT. THERE MAY BE ADDITIONAL RESTRICTIONS THAT ARE NOT RECORDED ON THIS PLAT THAT MAY BE FOUND IN THE PUBLIC RECORDS OF DUVAL COUNTY, FLORIDA

SURVEYOR'S CERTIFICATE:

THIS IS TO CERTIFY THAT THIS PLAT IS A CORRECT REPRESENTATION OF THE LANDS SURVEYED, PLATTED AND DESCRIBED IN THE CAPTION, THAT THE SURVEY WAS MADE UNDER THE UNDERSIGNED'S RESPONSIBLE DIRECTION AND SUPERVISION, THAT THE SURVEY DATA COMPLIES WITH ALL THE REQUIREMENTS OF FLORIDA STATUTE 177, THAT THE PERMANENT REFERENCE MONUMENTS, PERMANENT CONTROL POINTS AND LOT CORNERS HAVE BEEN OR WILL BE MONUMENTED IN ACCORDANCE WITH CHAPTER 177.091, F.S., CHAPTER 610.17-6.003 F.A.C. AND SECTION 654.110, ORDINANCE CODE OF THE CITY OF JACKSONVILLE, FLORIDA.

CERTIFIED THIS 13th DAY OF May A.D., 2003

[Signature] JOHN M. JAMES
FLORIDA PROFESSIONAL SURVEYOR & MAPPER, NO. 774
PRIVETT & ASSOC. OF FLORIDA, INC.



PREPARED BY:

PRIVETT & ASSOC. OF FLORIDA, INC.
SURVEYORS AND LAND PLANNERS
2732 TOWNSEND BOULEVARD
JACKSONVILLE, FLORIDA, 32211
(904) 743-7658 LB NO.4622

Approved 6/5/03
Date
[Signature]
City Engineer
for Director of Public Works
Approved 6/13/03
Date
[Signature]
for General Counsel

APPROVED FOR THE RECORD:

THIS IS TO CERTIFY THAT THIS PLAT HAS BEEN EXAMINED, ACCEPTED AND APPROVED BY THE CITY OF JACKSONVILLE, DUVAL COUNTY, FLORIDA, PURSUANT TO CHAPTER 654, ORDINANCE CODE

THIS 17th DAY OF JUNE, A.D., 2003
[Signature]
DIRECTOR OF PUBLIC WORKS

CLERK'S CERTIFICATE: # 2003195654

THIS IS TO CERTIFY THAT THIS PLAT HAS BEEN EXAMINED AND APPROVED

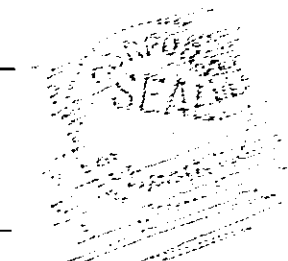
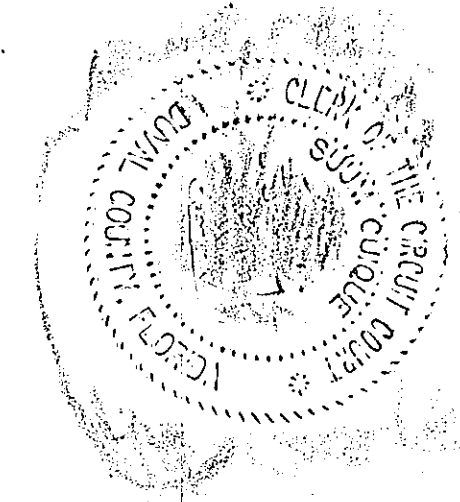
BY THE CITY OF JACKSONVILLE, FLORIDA AND SUBMITTED TO ME FOR RECORDING AND IS RECORDED IN PLAT BOOK 56 PAGES 18-18C OF THE PUBLIC RECORDS OF DUVAL COUNTY, FLORIDA.

SIGNED THIS 19th DAY OF June, A.D., 2003
[Signature] BY: [Signature]
CLERK: JIM FULLER DEPUTY CLERK

PLAT CONFORMITY REVIEW:

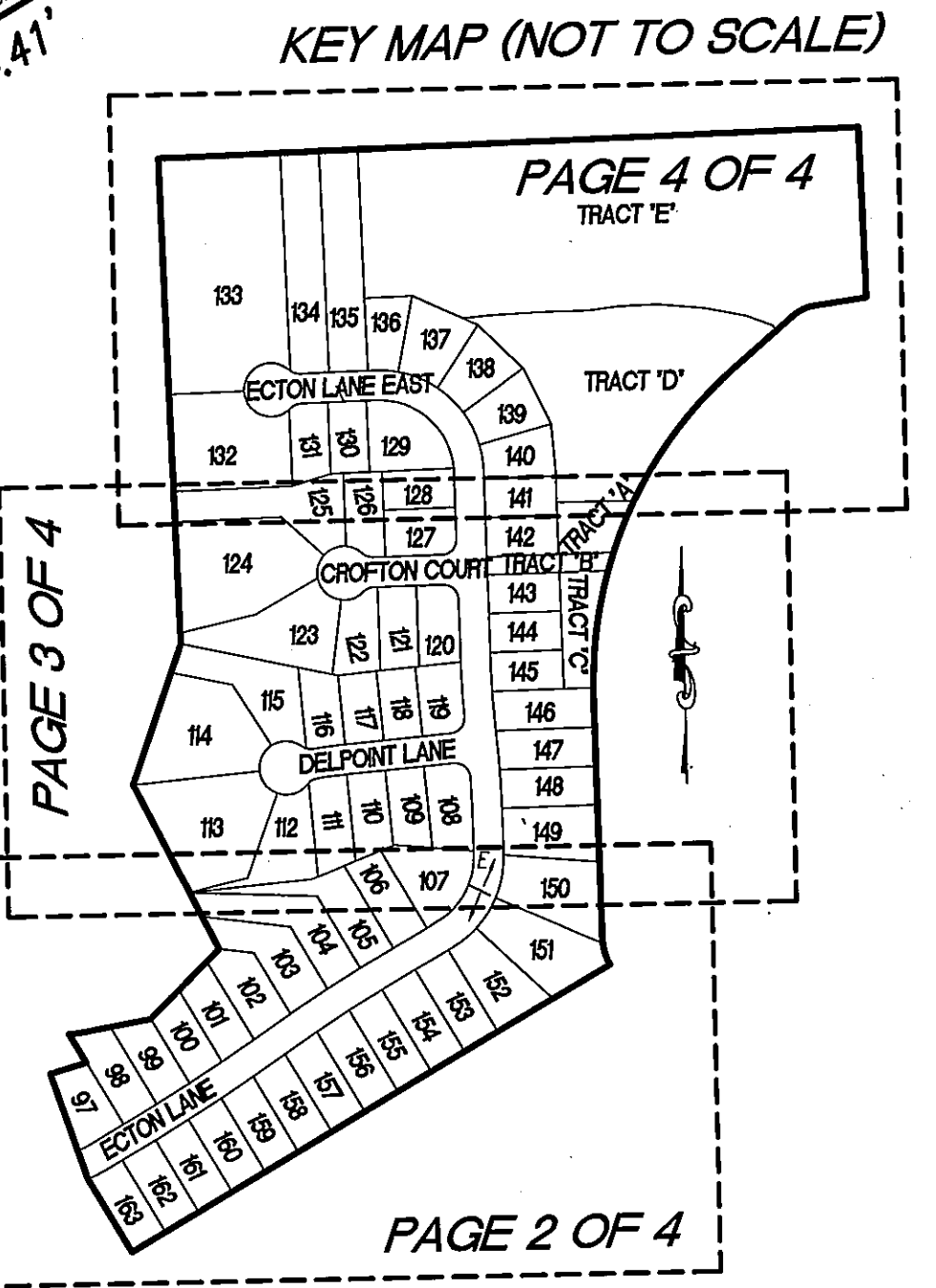
THIS PLAT HAS BEEN REVIEWED AND FOUND TO BE IN COMPLIANCE WITH PART 1, CHAPTER 177, FLORIDA STATUTES, THIS 5th DAY OF June, 2003

[Signature]
GLENN E. MCGREGOR, PLS
PROFESSIONAL LAND SURVEYOR NO. 4252

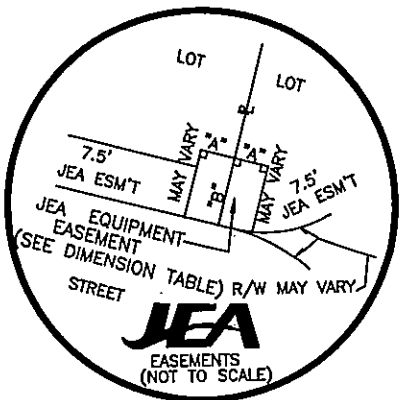
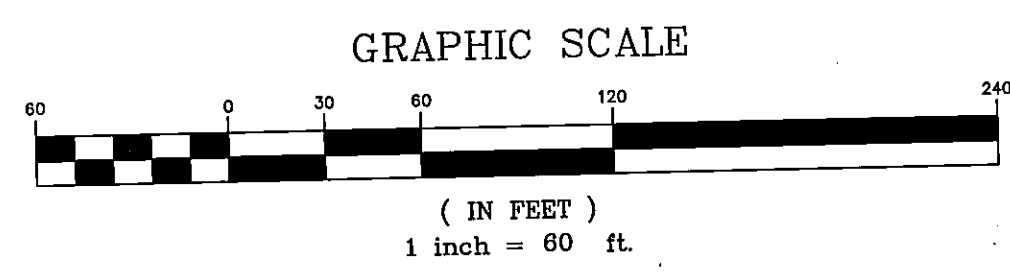


OLD MILL BRANCH UNIT THREE

BEING A PORTION OF SECTION 7, TOWNSHIP 3 SOUTH, RANGE 28 EAST, CITY OF JACKSONVILLE, DUVAL COUNTY, FLORIDA
SEE PAGE 3 OF 4



CURVE	LENGTH	RADIUS	DELTA	CHORD	BEARING
C1	19.38	25.00	44°24'55"	18.90'	S68°33'08"E
C2	19.38	25.00	44°24'55"	18.90'	S67°01'56"W
C3	78.88	1225.00	03°41'21"	78.86'	S02°36'16"E
C4	8.54	25.00	19°34'29"	8.50'	S62°59'57"E
C5	10.84	25.00	24°50'26"	10.75'	S85°12'24"E
C6	31.81	625.00	02°54'57"	31.80'	S83°49'51"W
C7	30.53	600.00	02°54'57"	30.53'	S83°49'51"W
C8	82.76	1200.00	03°57'05"	82.74'	S02°44'08"E
C9	82.76	1200.00	03°57'05"	82.74'	N02°44'08"W
C10	1.98	25.00	04°32'23"	1.98'	S40°13'39"W
C11	17.40	25.00	39°52'33"	17.05'	S62°26'07"W
C12	29.26	575.00	02°54'57"	29.26'	S83°49'51"W
C13	48.37	1175.00	02°21'32"	48.37'	N01°56'21"W
C14	28.60	200.00	08°11'32"	28.57'	N64°18'18"E
C15	3.87	45.00	04°55'21"	3.86'	N46°41'19"E



DIMENSION TABLE	
"A"	5' TYPICAL 10'X10' JEA EQUIPMENT EASEMENT
"B"	10' TYPICAL 10'X20' JEA EQUIPMENT EASEMENT
"C"	5' TYPICAL 5'X10' JEA EQUIPMENT EASEMENT
"D"	10' TYPICAL 10'X15' JEA EQUIPMENT EASEMENT
"E"	15' TYPICAL 15'X15' JEA EQUIPMENT EASEMENT

JEA NOTES:
 CERTAIN EASEMENTS ARE RESERVED FOR JEA FOR ITS USE IN CONJUNCTION WITH THE UNDERGROUND ELECTRICAL DISTRIBUTION SYSTEM.
 JEA-E DENOTES JEA EQUIPMENT EASEMENT.
 THESE EASEMENTS SHALL REMAIN TOTALLY UNOBSTRUCTED BY ANY IMPROVEMENTS THAT MAY IMPEDE THE USE AND ACCESS OF SAID EASEMENT BY JEA.
 JEA-E DENOTES JEA EASEMENT.
 THESE EASEMENTS SHALL REMAIN TOTALLY UNOBSTRUCTED BY ANY PERMANENT IMPROVEMENTS WHICH MAY IMPEDE THE USE OF SAID EASEMENT BY JEA. THE INSTALLATION OF FENCES, HEDGES, AND LANDSCAPING IS PERMISSIBLE BUT SUBJECT TO REMOVAL BY JEA AT THE EXPENSE OF EACH LOT OWNER FOR THE REMOVAL AND/OR REPLACEMENT OF SUCH ITEMS.
 THE EASEMENTS SHOWN HEREON AND DESIGNATED AS UNOBSTRUCTED/EASEMENTS, SHALL REMAIN TOTALLY UNOBSTRUCTED BY ANY IMPROVEMENTS THAT MAY IMPEDE THE USE AND ACCESS OF SAID EASEMENTS BY THE CITY OF JACKSONVILLE.

GENERAL NOTES AND LEGEND

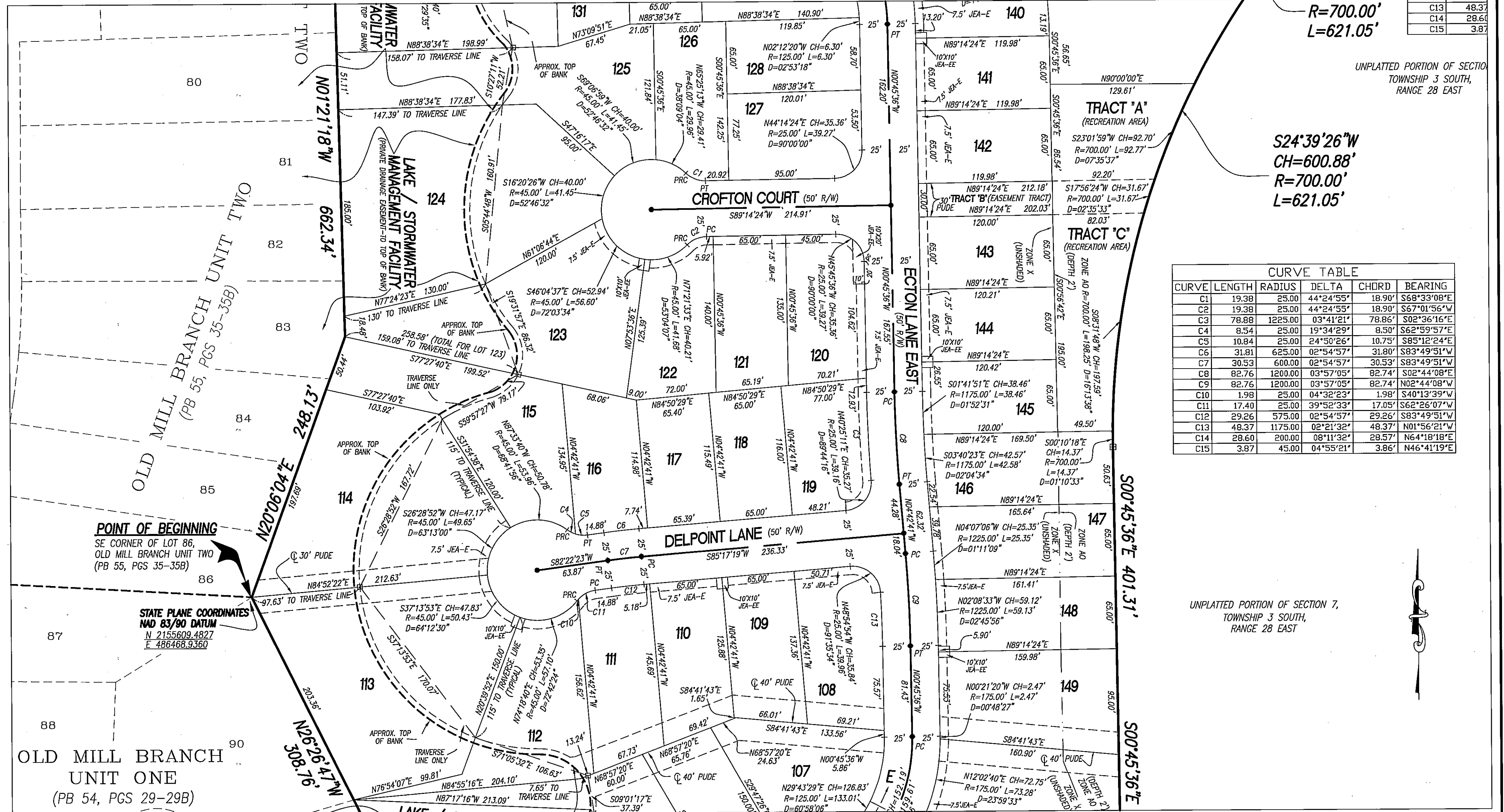
- BEARINGS SHOWN HEREON REFER TO STATE PLANE COORDINATES
 - DENOTES FOUND 4" CONCRETE MONUMENT STAMPED "LB-3624"
 - DENOTES SET 4" CONCRETE MONUMENT STAMPED "P.R.M. LB-4622"
 - DENOTES PERMANENT CONTROL POINT STAMPED "PCP LB-4622"
 - EASEMENTS SHOWN HEREON ARE FOR DRAINAGE UNLESS OTHERWISE NOTED
- THE EASEMENTS SHOWN HEREON AND DESIGNATED AS UNOBSTRUCTED EASEMENTS SHALL REMAIN TOTALLY UNOBSTRUCTED BY ANY PERMANENT IMPROVEMENTS WHICH MAY IMPEDE THE USE OF SAID EASEMENT BY THE CITY OF JACKSONVILLE. THE CONSTRUCTION OF DRIVEWAYS AND THE INSTALLATION OF FENCES, HEDGES AND LANDSCAPING IS PERMISSIBLE BUT SUBJECT TO REMOVAL BY THE CITY AT THE EXPENSE OF EACH LOT OWNER FOR THE REMOVAL AND/OR REPLACEMENT OF SUCH ITEMS.
- THE EASEMENTS SHOWN HEREON AND DESIGNATED AS UNOBSTRUCTED/EASEMENTS, SHALL REMAIN TOTALLY UNOBSTRUCTED BY ANY IMPROVEMENTS THAT MAY IMPEDE THE USE AND ACCESS OF SAID EASEMENTS BY THE CITY OF JACKSONVILLE.
- LEGEND:**
 PC=POINT OF CURVATURE
 PT=POINT OF TANGENCY
 PI=POINT OF INTERSECTION
 PRC=POINT OF REVERSE CURVATURE
 R=POINT OF COMPOUND CURVATURE
 R=RADIUS
 CH=CHORD
 L=LENGTH
 MSL=MEAN SEA LEVEL
 SEC=SECTION
 IP=IRON PIPE
 CM=CONCRETE MONUMENT
 PRM=PERMANENT REFERENCE MONUMENT
 PUE=PRIVATE UNOBSTRUCTED DRAINAGE EASEMENT
 UDE=UNOBSTRUCTED DRAINAGE EASEMENT
 DE=DRAINAGE EASEMENT
- D=DELTA ANGLE
 R/W=RIGHT-OF-WAY
 PB=PLAT BOOK
 MB=MAP BOOK
 DB=DEED BOOK
 ORV=OFFICIAL RECORDS VOLUME
 PG=PAGE
 C=CENTERLINE
 NTS=NOT TO SCALE
 FND=FOUND
 TRAV=TRAVERSE
- PSD. 2000-036
 CD. NO. 4553.43

PRIVETT & ASSOC. OF FLORIDA, INC.
 SURVEYORS AND LAND PLANNERS
 2732 TOWNSEND BOULEVARD
 JACKSONVILLE, FLORIDA, 32211
 (904) 743-7658 LB NO.4622

OLD MILL BRANCH UNIT THREE

BEING A PORTION OF SECTION 7, TOWNSHIP 3 SOUTH, RANGE 28 EAST, CITY OF JACKSONVILLE, DUVAL COUNTY, FLORIDA

SEE PAGE 4 OF 4



C13	48.37
C14	28.60
C15	3.87

$R=700.00'$
 $L=621.05'$

UNPLATTED PORTION OF SECTION 7, TOWNSHIP 3 SOUTH, RANGE 28 EAST

$S24^{\circ}39'26''W$
 $CH=600.88'$
 $R=700.00'$
 $L=621.05'$

CURVE	LENGTH	RADIUS	DELTA	CHORD	BEARING
C1	19.38	25.00	44°24'55"	18.90	S68°33'08"E
C2	19.38	25.00	44°24'55"	18.90	S67°01'56"W
C3	78.88	1225.00	03°41'21"	78.86	S02°36'16"E
C4	8.54	25.00	19°34'29"	8.50	S62°59'57"E
C5	10.84	25.00	24°50'26"	10.75	S85°12'24"E
C6	31.81	625.00	02°54'57"	31.80	S83°49'51"W
C7	30.53	600.00	02°54'57"	30.53	S83°49'51"W
C8	82.76	1200.00	03°57'05"	82.74	S02°44'08"E
C9	82.76	1200.00	03°57'05"	82.74	N02°44'08"W
C10	1.98	25.00	04°32'23"	1.98	S40°13'39"W
C11	17.40	25.00	39°52'33"	17.05	S62°26'07"W
C12	29.26	575.00	02°54'57"	29.26	S83°49'51"W
C13	48.37	1175.00	02°21'32"	48.37	N01°56'21"W
C14	28.60	200.00	08°11'32"	28.57	N64°18'18"E
C15	3.87	45.00	04°55'21"	3.86	N46°41'19"E

POINT OF BEGINNING
SE CORNER OF LOT 86,
OLD MILL BRANCH UNIT TWO
(PB 55, PGS 35-35B)

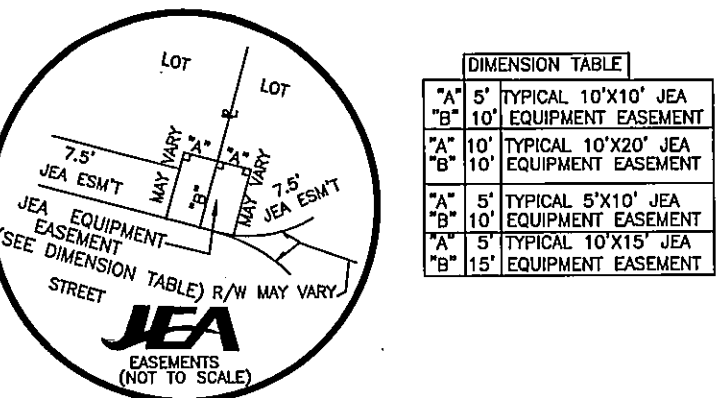
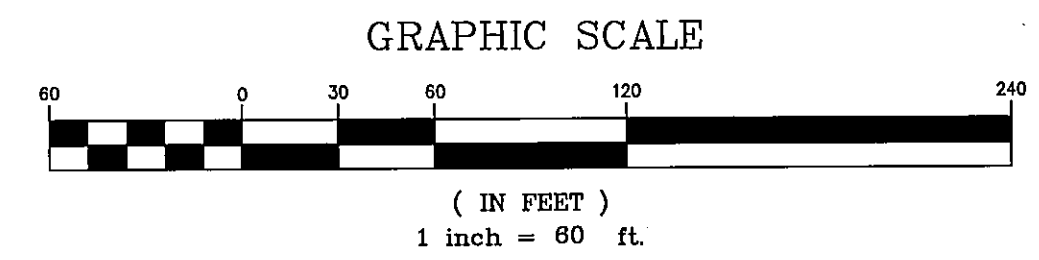
**STATE PLANE COORDINATES
NAD 83/90 DATUM**
N 2155609.4827
E 486468.9360

OLD MILL BRANCH
UNIT ONE
(PB 54, PGS 29-29B)

SEE PAGE 2 OF 4

GENERAL NOTES AND LEGEND

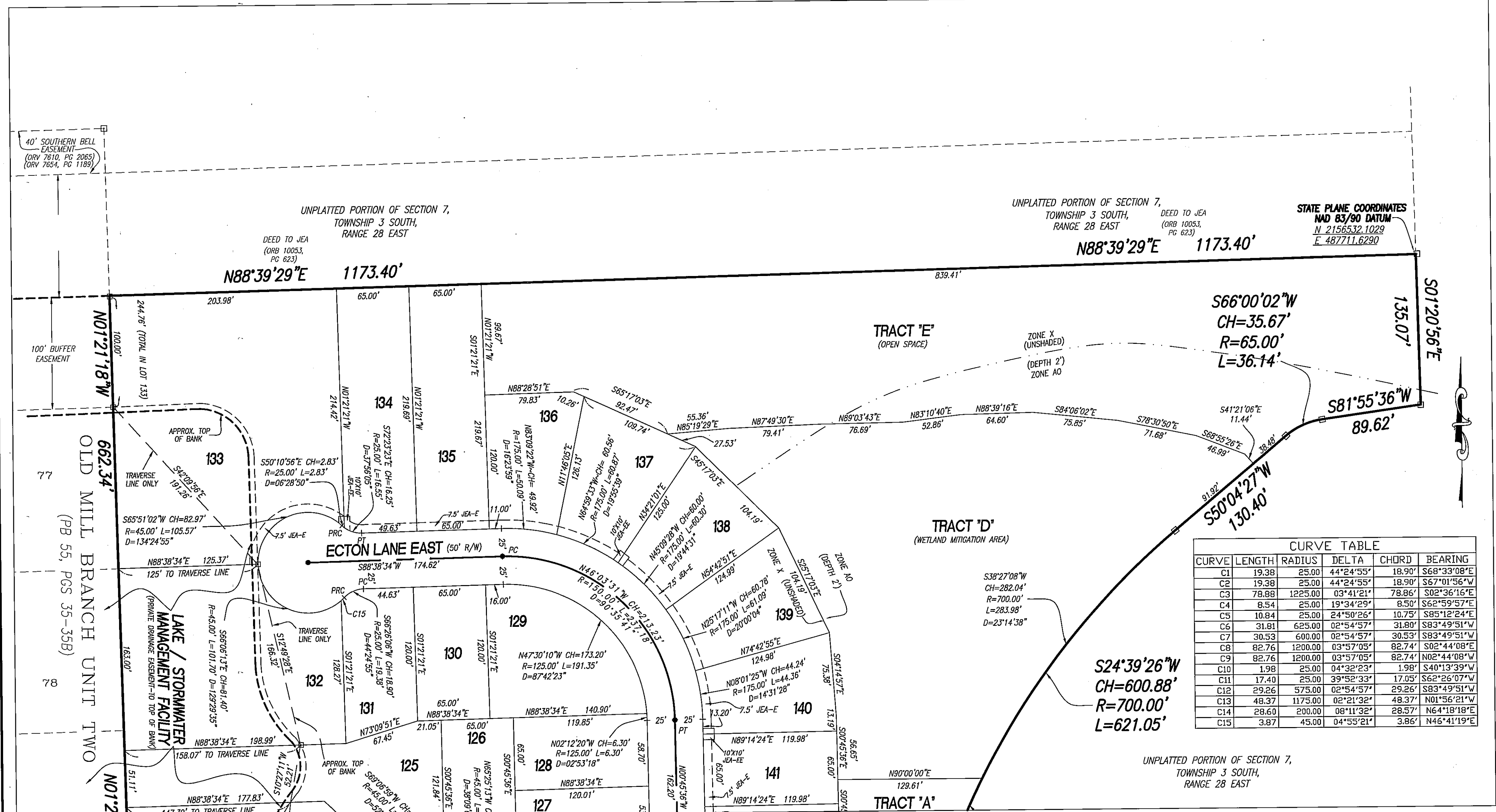
- BEARINGS SHOWN HEREON REFER TO STATE PLANE COORDINATES
 - DENOTES FOUND 4" CONCRETE MONUMENT STAMPED "LB-3624"
 - DENOTES SET 4" CONCRETE MONUMENT STAMPED "P.R.M. LB-4622"
 - DENOTES PERMANENT CONTROL POINT STAMPED "PCP LB-4622"
 - EASEMENTS SHOWN HEREON ARE FOR DRAINAGE UNLESS OTHERWISE NOTED
- THE EASEMENTS SHOWN HEREON AND DESIGNATED AS UNOBSTRUCTED EASEMENTS SHALL REMAIN TOTALLY UNOBSTRUCTED BY ANY PERMANENT IMPROVEMENTS WHICH MAY IMPEDE THE USE OF SAID EASEMENT BY THE CITY OF JACKSONVILLE. THE CONSTRUCTION OF DRIVEWAYS AND THE INSTALLATION OF FENCES, HEDGES AND LANDSCAPING IS PERMISSIBLE BUT SUBJECT TO REMOVAL BY THE CITY AT THE EXPENSE OF EACH LOT OWNER FOR THE REMOVAL AND/OR REPLACEMENT OF SUCH ITEMS.
- THE EASEMENTS SHOWN HEREON AND DESIGNATED AS UNOBSTRUCTED/ACCESS EASEMENTS SHALL REMAIN TOTALLY UNOBSTRUCTED BY ANY IMPROVEMENTS THAT MAY IMPEDE THE USE AND ACCESS OF SAID EASEMENTS BY THE CITY OF JACKSONVILLE.
- LEGEND:**
PC=POINT OF CURVATURE
PT=POINT OF TANGENCY
PI=POINT OF INTERSECTION
PRC=POINT OF REVERSE CURVATURE
R=RADIUS
CH=CHORD
L=LENGTH
MSL=MEAN SEA LEVEL
SEC=SECTION
IP=IRON PIPE
CM=CONCRETE MONUMENT
PRM=PERMANENT REFERENCE MONUMENT
PUDE=PRIVATE UNOBSTRUCTED DRAINAGE EASEMENT
UDE=UNOBSTRUCTED DRAINAGE EASEMENT
DE=DRAINAGE EASEMENT
- D=DELTA ANGLE
R/W=RIGHT-OF-WAY
PB=PLAT BOOK
MB=MAP BOOK
DB=DEED BOOK
ORV=OFFICIAL RECORDS VOLUME
PG=PAGE
CL=CENTERLINE
NSL=NOT TO SCALE
FND=FOUND
TRAV=TRAVERSE
- PSD. 2000-036
CD. NO. 4553.43



**PRIVETT & ASSOC.
OF FLORIDA, INC.**
SURVEYORS AND LAND PLANNERS
2732 TOWNSEND BOULEVARD
JACKSONVILLE, FLORIDA, 32211
(904) 743-7658 LB NO.4622

OLD MILL BRANCH UNIT THREE

BEING A PORTION OF SECTION 7, TOWNSHIP 3 SOUTH, RANGE 28 EAST, CITY OF JACKSONVILLE, DUVAL COUNTY, FLORIDA



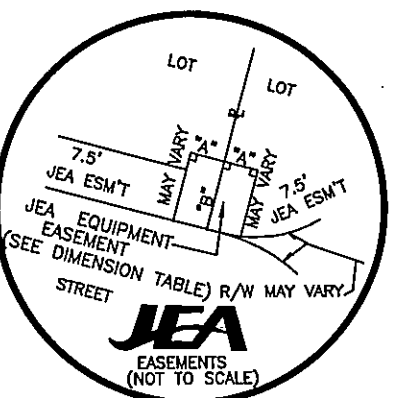
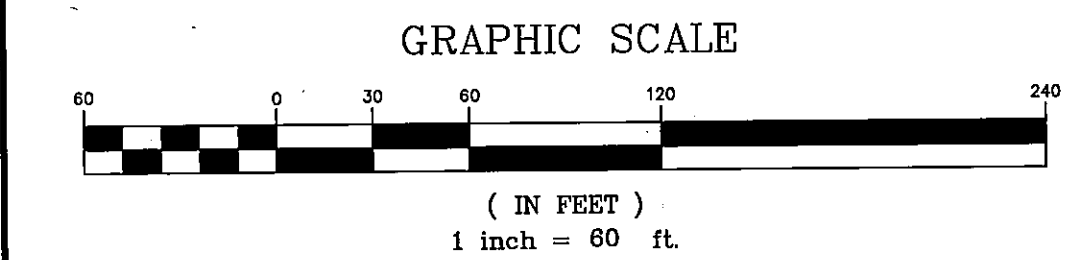
CURVE TABLE

CURVE	LENGTH	RADIUS	DELTA	CHORD	BEARING
C1	19.38	25.00	44°24'55"	18.90	S68°33'08"E
C2	19.38	25.00	44°24'55"	18.90	S67°01'56"W
C3	78.88	1225.00	03°41'21"	78.86	S02°36'16"E
C4	8.54	25.00	19°34'29"	8.50	S62°59'57"E
C5	10.84	25.00	24°50'26"	10.75	S85°12'24"E
C6	31.81	625.00	02°54'57"	31.80	S83°49'51"W
C7	30.53	600.00	02°54'57"	30.53	S83°49'51"W
C8	82.76	1200.00	03°57'05"	82.74	S02°44'08"E
C9	82.76	1200.00	03°57'05"	82.74	N02°44'08"W
C10	1.98	25.00	04°32'23"	1.98	S40°13'39"W
C11	17.40	25.00	39°52'33"	17.05	S62°26'07"W
C12	29.26	575.00	02°54'57"	29.26	S83°49'51"W
C13	48.37	1175.00	02°21'32"	48.37	N01°56'21"W
C14	28.60	200.00	08°11'32"	28.57	N64°18'18"E
C15	3.87	45.00	04°55'21"	3.86	N46°41'19"E

SEE PAGE 3 OF 4

GENERAL NOTES AND LEGEND

- BEARINGS SHOWN HEREON REFER TO STATE PLANE COORDINATES
 - DENOTES FOUND 4" CONCRETE MONUMENT STAMPED "LB-3624"
 - DENOTES SET 4" CONCRETE MONUMENT STAMPED "P.R.M. LB-4622"
 - DENOTES PERMANENT CONTROL POINT STAMPED "PCP LB-4622"
 - EASEMENTS SHOWN HEREON ARE FOR DRAINAGE UNLESS OTHERWISE NOTED
 - THE EASEMENTS SHOWN HEREON AND DESIGNATED AS UNOBSTRUCTED EASEMENTS SHALL REMAIN TOTALLY UNOBSTRUCTED BY ANY IMPROVEMENTS WHICH MAY IMPEDING THE USE OF SAID EASEMENT BY THE CITY OF JACKSONVILLE. THE CONSTRUCTION OF DRIVEWAYS AND THE INSTALLATION OF FENCES, HEDGES AND LANDSCAPING IS PERMISSIBLE BUT SUBJECT TO REMOVAL BY THE CITY AT THE EXPENSE OF EACH LOT OWNER FOR THE REMOVAL AND/OR REPLACEMENT OF SUCH ITEMS.
- THE EASEMENTS SHOWN HEREON AND DESIGNATED AS UNOBSTRUCTED/ACCESS EASEMENTS, SHALL REMAIN TOTALLY UNOBSTRUCTED BY ANY IMPROVEMENTS THAT MAY IMPEDING THE USE AND ACCESS OF SAID EASEMENTS BY THE CITY OF JACKSONVILLE.
- LEGEND:**
 PC=POINT OF CURVATURE
 PT=POINT OF TANGENCY
 PI=POINT OF INTERSECTION
 PRC=POINT OF REVERSE CURVATURE
 PCC=POINT OF COMPOUND CURVATURE
 R=RADIUS
 CH=CHORD
 L=LENGTH
 MSL=MEAN SEA LEVEL
 SEC=SECTION
 IP=IRON PIPE
 CM=CONCRETE MONUMENT
 PRM=PERMANENT REFERENCE MONUMENT
 PUDE=PRIVATE UNOBSTRUCTED DRAINAGE EASEMENT
 UDE=UNOBSTRUCTED DRAINAGE EASEMENT
 DE=DRAINAGE EASEMENT
- D=DELTA ANGLE
 R/W=RIGHT-OF-WAY
 PB=PLAT BOOK
 MB=MAP BOOK
 DB=DEED BOOK
 ORV=OFFICIAL RECORDS VOLUME
 PG=PAGE
 C=CENTERLINE
 NTS=NOT TO SCALE
 FND=FOUND
 TRAV=TRAVERSE
- PSD, 2000-036
 CD. NO. 4553.43



DIMENSION TABLE

"A"	5"	TYPICAL 10'X10' JEA
"B"	10"	TYPICAL 10'X10' JEA
"C"	10"	TYPICAL 10'X20' JEA
"D"	10"	TYPICAL 10'X20' JEA
"E"	5"	TYPICAL 5'X10' JEA
"F"	10"	TYPICAL 10'X10' JEA
"G"	10"	TYPICAL 10'X15' JEA
"H"	15"	TYPICAL 10'X15' JEA

JEA NOTES:
 CERTAIN EASEMENTS ARE RESERVED FOR JEA FOR ITS USE IN CONJUNCTION WITH THE UNDERGROUND ELECTRICAL DISTRIBUTION SYSTEM.
 JEA-EE DENOTES JEA EQUIPMENT EASEMENT.
 THESE EASEMENTS SHALL REMAIN TOTALLY UNOBSTRUCTED BY ANY IMPROVEMENTS WHICH MAY IMPEDING THE USE AND ACCESS OF SAID EASEMENT BY JEA.
 JEA-E DENOTES JEA EASEMENT.
 THESE EASEMENTS SHALL REMAIN TOTALLY UNOBSTRUCTED BY ANY IMPROVEMENTS WHICH MAY IMPEDING THE USE OF SAID EASEMENT BY JEA. THE INSTALLATION OF FENCES, HEDGES, AND LANDSCAPING IS PERMISSIBLE BUT SUBJECT TO REMOVAL BY JEA AT THE EXPENSE OF EACH LOT OWNER FOR THE REMOVAL AND/OR REPLACEMENT OF SUCH ITEMS.

PRIVETT & ASSOC. OF FLORIDA, INC.
 SURVEYORS AND LAND PLANNERS
 2732 TOWNSEND BOULEVARD
 JACKSONVILLE, FLORIDA, 32211
 (904) 743-7658 LB NO.4622