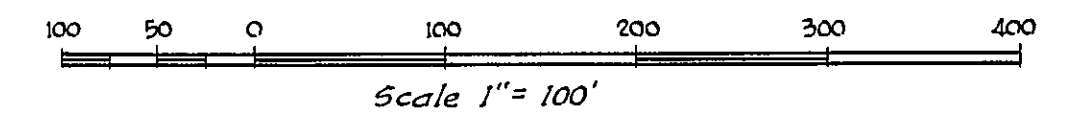


# ORTEGA FOREST - UNIT EIGHT

## DUVAL COUNTY, FLORIDA

A SUBDIVISION OF A PORTION OF THE JOHN H. MCINTOSH GRANT, SECTION 42, TOWNSHIP 3 SOUTH, RANGE 26 EAST, AND FORMERLY SUBDIVIDED INTO CERTAIN LOTS AND BLOCKS OF ORTEGA BY PLAT RECORDED IN THE PUBLIC RECORDS OF DUVAL COUNTY, FLORIDA IN PLAT BOOK 3 PAGE 40, AND PARTS OF LANDS FORMERLY SUBDIVIDED AS LOTS 5 AND 6, VENETIA, BY PLAT RECORDED IN SAID PUBLIC RECORDS IN PLAT BOOK 13 PAGE 57, THE LANDS HEREBY SUBDIVIDED BEING MORE PARTICULARLY DESCRIBED IN THE CAPTION.



APPROVED  
DATE 7-6-59  
BY: *John A. ...*  
COUNTY ENGINEER  
*James Blount*  
COUNTY ATTORNEY

NOTE:  
Permanent reference monument shown thus:  $\odot$  PRM  
Curve data shown refer to the center line, unless otherwise indicated.  
Bearings and distances shown on curves refer to the chord.  
Lots in Block 25 extend from Prince Edward Road to the Bulkhead Line. Distances shown on side lines are from the Road to the transit line. Iron pipes were also set on the side lines of Lots 1 thru 10, 10.0 feet NWly from the Transit line.

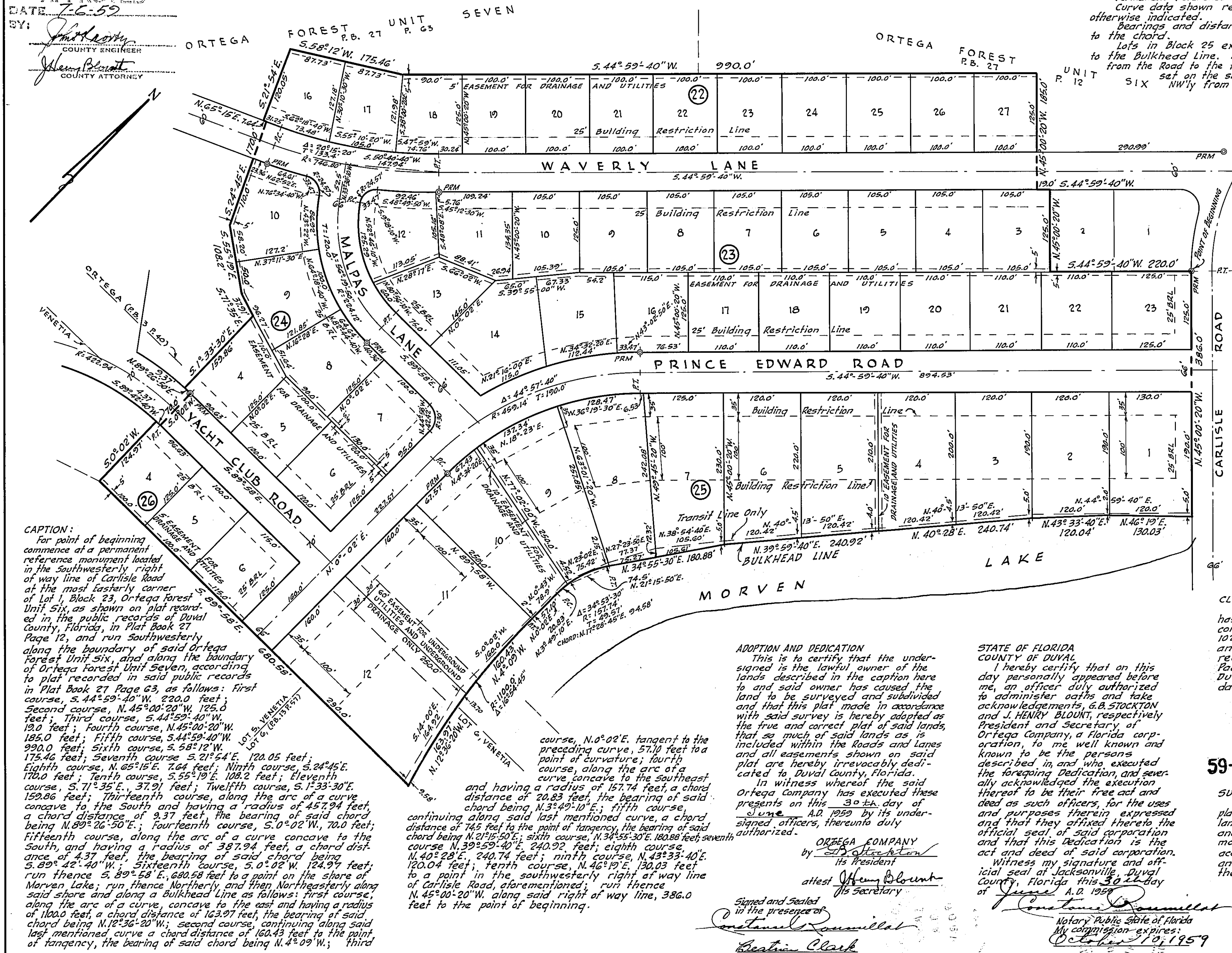


TABLE OF CULVERT SIZES	
LOTS FRONTING ON WAVERLY LANE	SIZE
BLOCK 22 - LOTS 23, 24 & 25	12" x 6"
BLOCK 23 - LOTS 2 & 3	12" x 6"
BLOCK 23 - LOTS 5, 6 & 7	12" x 6"
BLOCK 23 - LOTS 3 & 4	15" x 6"
LOTS FRONTING ON YACHT CLUB ROAD	
BLOCK 24 - LOTS 4, 5 & 6	24" x 6"
BLOCK 26 - LOTS 4, 5 & 6	15" x 6"

Owners of lots shown in the above table constructing driveway or walkways across the side ditches of roads mentioned in said table must install reinf. conc. culvert (or approved equivalent) of the size specified. Invert elev. of each culvert are to be approved by the County Engineer. Lot owners desiring to eliminate the road side ditch in front of their lots, must install a culvert of the size specified, for the full width of their lot and provide a catch basin for draining their lot and the pavement, to the culvert. The top of the catch basin to be not less than 6" below the elev. of the pavement center line. Driveways and walkways along lot frontages not shown in above table, must be constructed to conform with invert elev. of the swale, or to the top of curb.

**CAPTION:**  
For point of beginning commence at a permanent reference monument located in the southwesterly right of way line of Carlisle Road at the most easterly corner of Lot 1, Block 23, Ortega Forest Unit Six, as shown on plat recorded in the public records of Duval County, Florida, in Plat Book 27 Page 12, and run Southwesterly along the boundary of said Ortega Forest Unit Six, and along the boundary of Ortega Forest Unit Seven, according to plat recorded in said public records in Plat Book 27 Page 63, as follows: First course, S. 44° 59' 40" W. 220.0 feet; Second course, N. 45° 00' 20" W. 125.0 feet; Third course, S. 44° 59' 40" W. 120.0 feet; Fourth course, N. 45° 00' 20" W. 125.0 feet; Fifth course, S. 44° 59' 40" W. 99.0 feet; Sixth course, S. 58° 12' W. 175.46 feet; Seventh course, S. 21° 54' E. 120.05 feet; Eighth course, N. 65° 15' E. 7.64 feet; Ninth course, S. 24° 45' E. 170.0 feet; Tenth course, S. 55° 19' E. 108.2 feet; Eleventh course, S. 71° 35' E. 37.91 feet; Twelfth course, S. 1° 33' 30" E. 159.86 feet; Thirteenth course, along the arc of a curve concave to the South and having a radius of 457.94 feet, a chord distance of 9.37 feet, the bearing of said chord being N. 89° 26' 50" E.; Fourteenth course, S. 0° 02' W. 70.0 feet; Fifteenth course, along the arc of a curve concave to the South, and having a radius of 387.94 feet, a chord distance of 4.37 feet, the bearing of said chord being S. 89° 42' 40" W.; Sixteenth course, S. 0° 02' W. 124.97 feet; run thence S. 89° 58' E. 680.58 feet to a point on the shore of Morven Lake; run thence Northerly, and then Northeasterly along said shore and along a Bulkhead Line as follows: first course, along the arc of a curve, concave to the east and having a radius of 1100.0 feet, a chord distance of 163.97 feet, the bearing of said chord being N. 12° 36' 20" W.; second course, continuing along said last mentioned curve a chord distance of 160.43 feet to the point of tangency, the bearing of said chord being N. 4° 09' W.; third

course, N. 0° 02' E. tangent to the preceding curve, 57.10 feet to a point of curvature; fourth course, along the arc of a curve, concave to the southeast and having a radius of 157.74 feet, a chord distance of 20.83 feet, the bearing of said chord being N. 3° 49' 10" E.; fifth course, continuing along said last mentioned curve, a chord distance of 74.5 feet to the point of tangency, the bearing of said chord being N. 21° 15' 50" E.; sixth course, N. 34° 55' 30" E. 180.88 feet; seventh course, N. 40° 28' E. 240.74 feet; eighth course, N. 43° 33' 40" E. 120.04 feet; ninth course, N. 46° 19' E. 130.03 feet to a point in the southwesterly right of way line of Carlisle Road, aforementioned; run thence N. 45° 00' 20" W. along said right of way line, 386.0 feet to the point of beginning.

**ADOPTION AND DEDICATION**  
This is to certify that the undersigned is the lawful owner of the lands described in the caption here to and said owner has caused the land to be surveyed and subdivided and that this plat made in accordance with said survey is hereby adopted as the true and correct plat of said lands, that so much of said lands as is included within the Roads and Lanes and all easements shown on said plat are hereby irrevocably dedicated to Duval County, Florida.  
In witness whereof the said Ortega Company has executed these presents on this 30th day of June, A.D. 1959 by its undersigned officers, thereunto duly authorized.  
ORTEGA COMPANY  
by *Ed Stockton*  
its President  
attest *James Blount*  
its Secretary  
Signed and Sealed in the presence of  
*Constantine Camilletti*  
*Beatrice Clark*

**STATE OF FLORIDA**  
**COUNTY OF DUVAL**  
I hereby certify that on this day personally appeared before me, an officer duly authorized to administer oaths and take acknowledgements, G.B. STOCKTON and J. HENRY BLOUNT, respectively President and Secretary of Ortega Company, a Florida corporation, to me well known and known to be the persons described in, and who executed the foregoing Dedication, and severally acknowledged the execution thereof to be their free act and deed as such officers, for the uses and purposes therein expressed and that they affixed thereto the official seal of said corporation and that this Dedication is the act and deed of said corporation. Witness my signature and official seal at Jacksonville, Duval County, Florida this 30th day of June, A.D. 1959  
*Constantine Camilletti*  
Notary Public State of Florida  
My commission expires  
October 10, 1959

APPROVED FOR RECORD  
This plat has been examined and is hereby accepted and approved by the Board of County Commissioners of Duval County Florida pursuant to a resolution of said Board adopted this 6th day of July, A.D. 1959.  
BOARD OF COUNTY COMMISSIONERS  
by *W. M. ...*  
Chairman  
attest *Reynold M. Smith*  
Deputy Clerk  
*Leonard W. Thomas*  
Clerk

**CLERKS CERTIFICATE**  
I hereby certify that this plat has been examined and that it complies in form with Chapter 10275, Laws of Florida of 1925, and is filed for record and recorded in Plat Book 29 Page 85 public records of Duval County Florida this 9th day of July, A.D. 1959.  
*Leonard W. Thomas*  
Clerk  
*Robert C. Forbes*  
Deputy Clerk

**SURVEYORS CERTIFICATE**  
I hereby certify that the attached plat is a true representation of the lands surveyed, platted and described and that permanent reference monuments have been placed according to the Laws of Florida, and that this plat complies with the Duval County zoning requirements.  
*Richard ...*  
Reg. Land Surveyor No. 461  
Partner, Robert M. Annes & Assoc.  
420 First Federal Savings Bldg.  
Jacksonville, Florida  
814835-676

59-42557