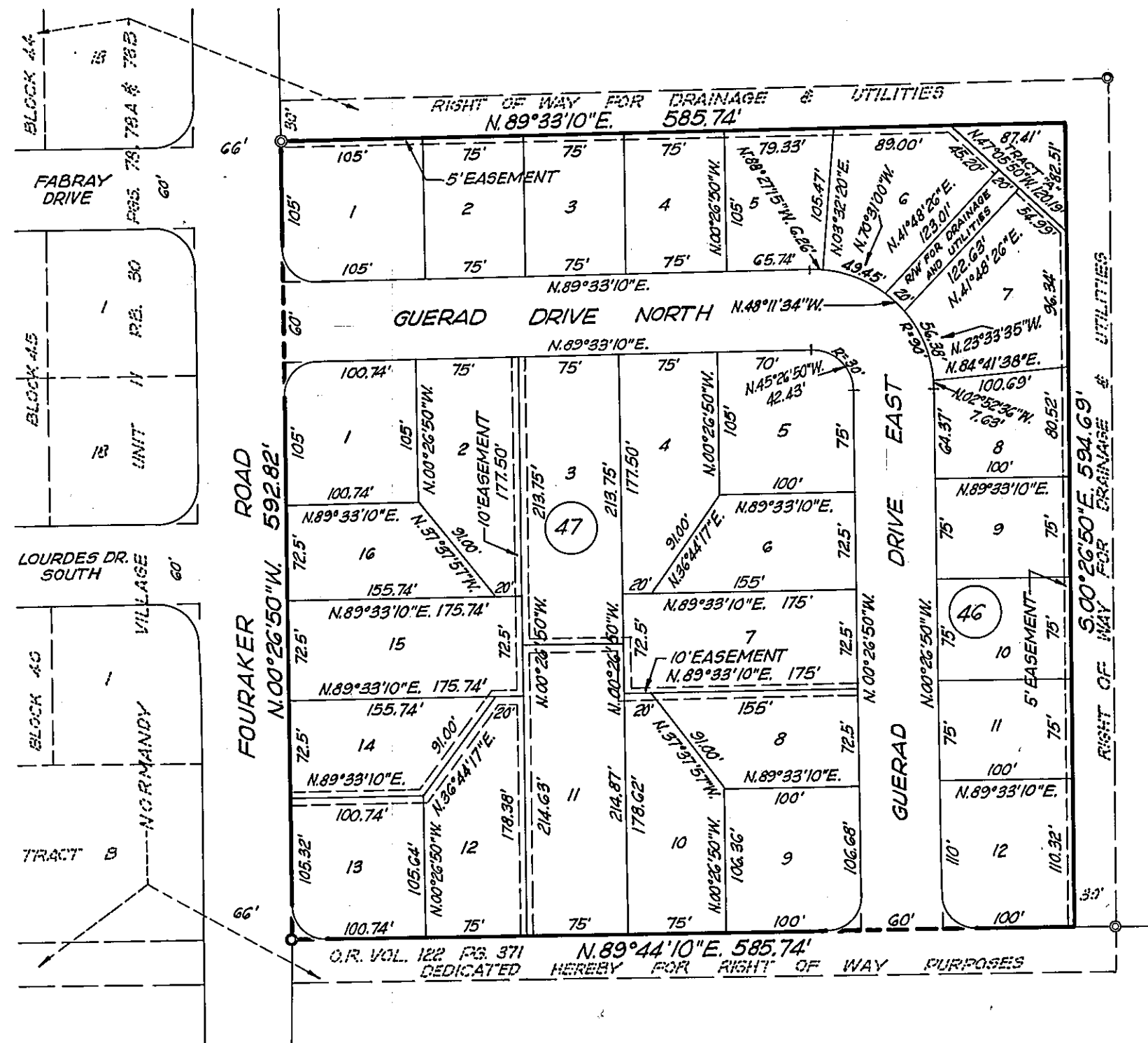


APPROVED
 DATE 11-28-60
 BY: [Signature]
 COUNTY ENGINEER
[Signature]
 COUNTY ATTORNEY

NORMANDY VILLAGE Unit 12

CAPTION BEING A REPLAT OF TRACT "A", AS SHOWN ON PLAT OF NORMANDY VILLAGE UNIT 11, AS RECORDED IN PLAT BOOK 30 PAGES 78, 78A, AND 78B OF THE CURRENT PUBLIC RECORDS OF DUVAL COUNTY, FLORIDA.



- NOTES:
1. Denotes Permanent Reference Monument
 2. Building Restriction lines are 25 feet from all street lines.
 3. All radii not shown are 25 feet.
 4. All easements shown hereon are for drainage and utilities.
 5. All distances shown on rounded black corners are to street line intersections.
 6. Bearings and distances shown hereon on curves are chord bearings and distances.
 7. Differences between the boundary distances shown hereon and those of prior recording are actual as apposed to former record.

EXAMINED AND APPROVED this 28th day of November A.D. 1960, by the Board of County Commissioners of Duval County, Florida.

[Signature] Chairman
 Attest: [Signature] Clerk
 By: [Signature] Deputy Clerk

ADOPTION AND DEDICATION

This is to certify that DINECREST DEVELOPMENT CO., a corporation under the laws of the State of Florida, is the lawful owner of the lands described in the caption hereon, and that it has caused the same to be surveyed and subdivided and that this plat made in accordance with said survey, is hereby adopted as the true correct plat of said lands, and all drives, easements, and right-of-ways for drainage and utilities shown hereon are hereby irrevocably and without reservations dedicated to the County of Duval and its successors.

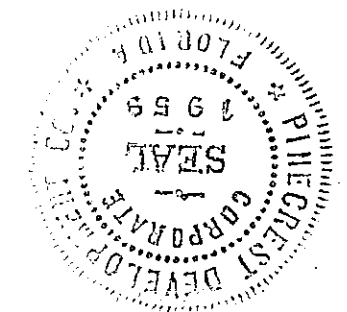
In witness whereof PINECREST DEVELOPMENT CO., has caused these presents to be signed by its President and its Secretary by and with authority of its Board of Directors in its name and with its corporate seal affixed this 23rd day of November A.D. 1960.

Signed and Sealed in the presence of:

PINECREST DEVELOPMENT CO.

[Signature] Witnesses
[Signature]

[Signature] President
[Signature] Secretary

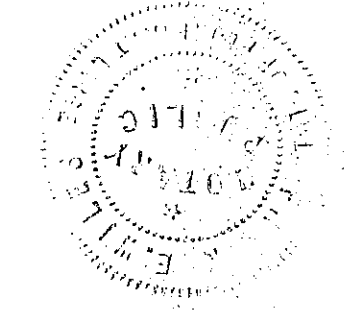


STATE OF FLORIDA
 COUNTY OF DUVAL

I hereby certify that on this day personally appeared before me, an officer duly authorized to administer oaths and take acknowledgements, F.C. UIBLE and JOHN E. ROQUEMORE, respectively President and Secretary of PINECREST DEVELOPMENT CO., a corporation under the laws of the State of Florida, to me well known to be the persons described in and who executed the foregoing dedication and who severally acknowledge the execution thereof to be their free act and deed as such officers for the uses and purposes therein expressed, and that they affixed thereto thereto the official seal of said corporation and the dedication is the act and deed of said corporation.

Witness my signature and official seal at Jacksonville, Duval County, Florida, this 23rd day of November A.D. 1960.

[Signature]
 Notary Public, State of Florida at large. My Commission expires October 31, 1961.



SURVEYOR'S CERTIFICATE

This is to certify that the above plat is a correct representation of lands surveyed, platted and described above and that Permanent Reference Monuments have been placed as shown thereon according to the laws of the State of Florida, and that all Duval County zoning rules and regulations have been complied with.

Signed this 23rd day of November A.D. 1960.

WAVERLY J. RAY AND ASSOCIATES

[Signature]
 Registered Surveyor, Certificate No. 707



60- 75686

THIS IS TO CERTIFY that this plat has been examined and that it complies in form with Chapter 10275, laws of the State of Florida of 1925, and is filed for record and recorded in Plat Book 30 Page 97 of the public records of Duval County, Florida, this 6th day of December A.D. 1960.

[Signature] Clerk
 By: [Signature] Deputy Clerk

