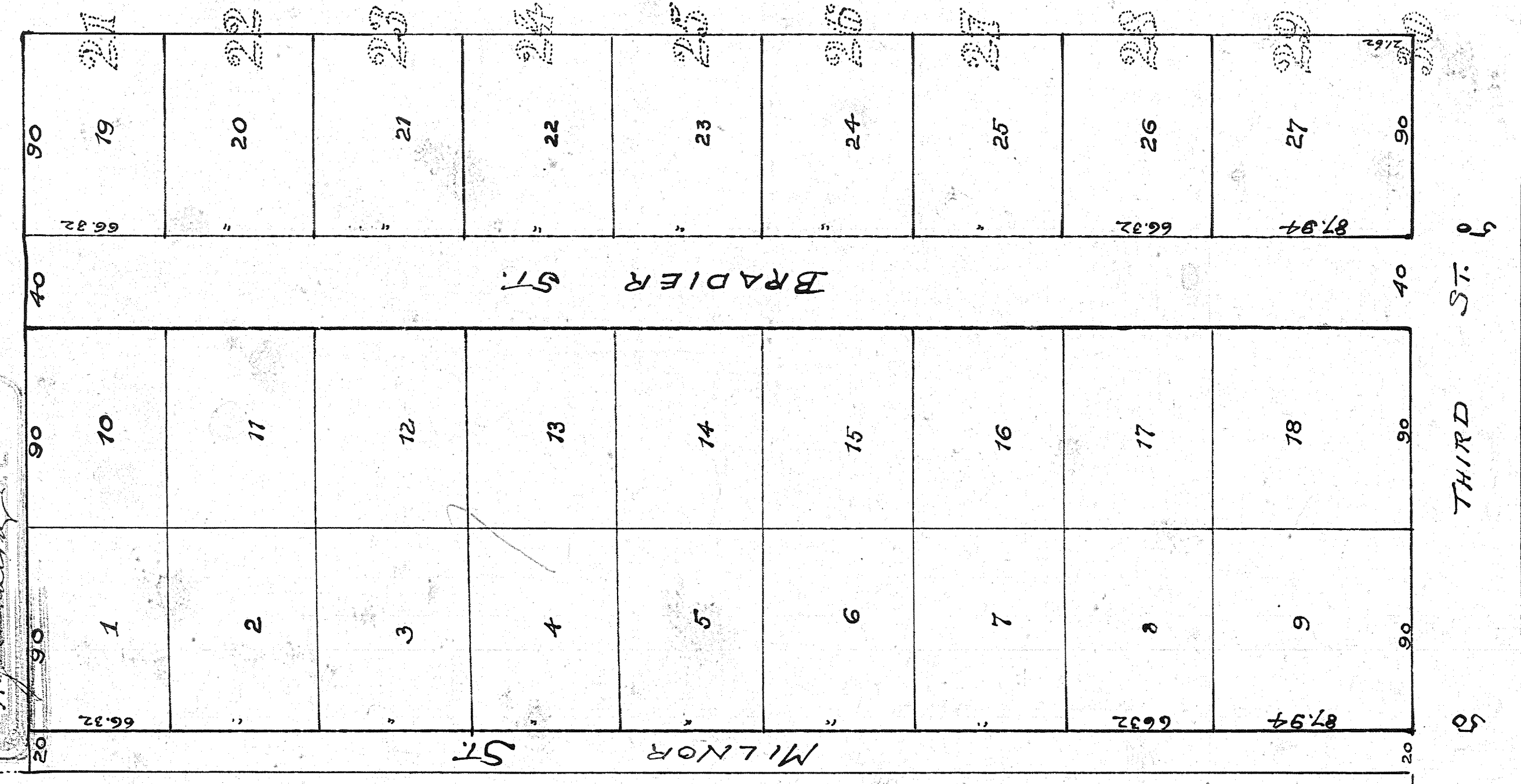


**REPLAT OF**  
 J. H. PAGES SUBDIVISION OF  
 1/2 LOTS 21, 20, 19, INCLUSIVE & PART OF LOT 30  
 OF  
 EAST GREELEYVILLE  
 ELLIS CURTIS & HOOKER CERTS.  
 JACKSONVILLE, FLA.

Scale 1" = 100'  
 JAN 20 1911  
 PLAT 4  
 Ellis Curtis & Hooker  
 Surveyors  
 Duval County, Fla.



This is to certify that the above plat indicates and is made in accordance with an actual survey of the lands described in the above caption to said plat, as made by us.

*Ellis Curtis & Hooker*