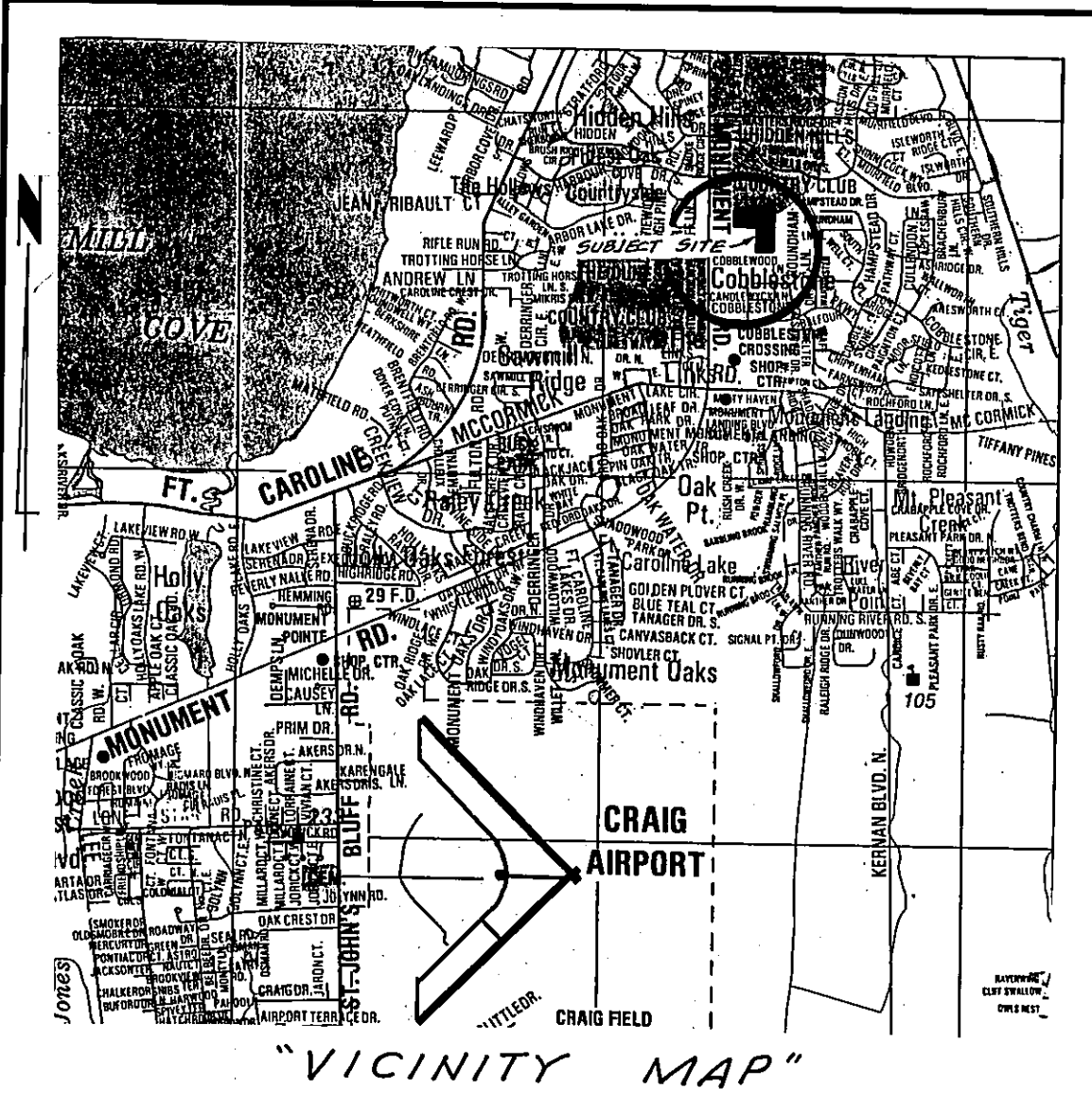
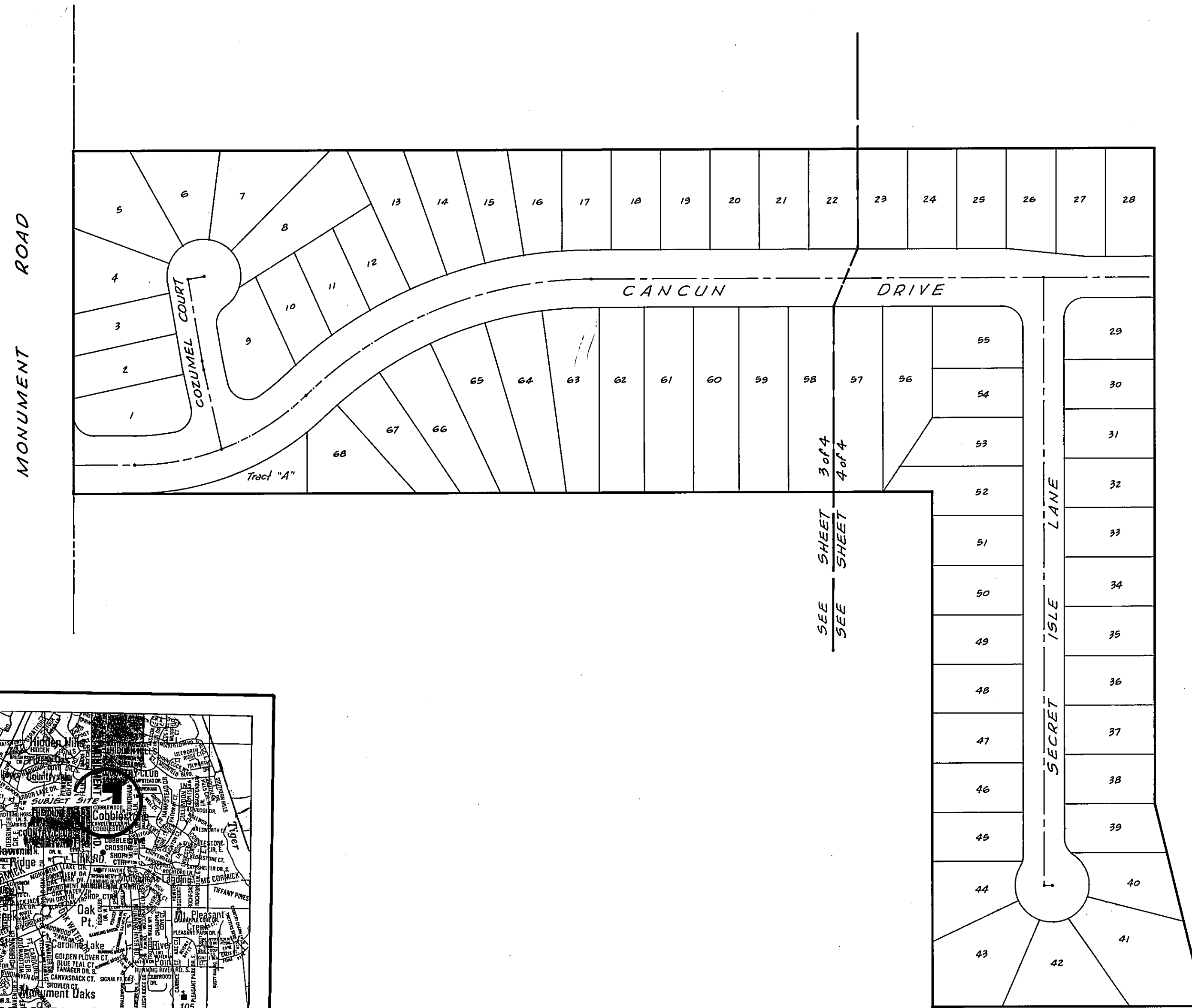


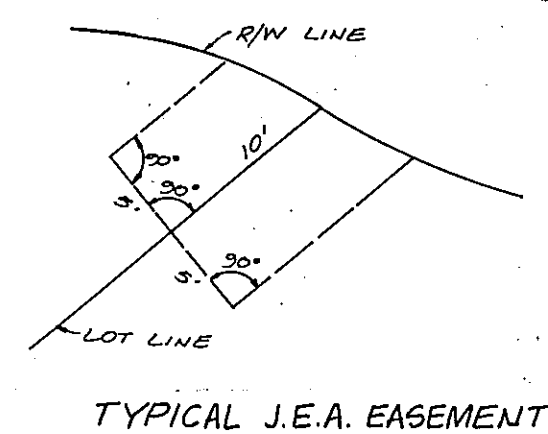
Secret Hills Unit One

BEING A PORTION OF GOVERNMENT LOTS 2 AND 3,
SECTION 4, TOWNSHIP 2 SOUTH, RANGE 28 EAST,
OF THE CITY OF JACKSONVILLE, DUVAL COUNTY, FLORIDA.

PLAT BOOK 47 PAGE 54A
SHEET 2 OF 4 SHEETS.



KEY MAP



Secret Hills Unit One

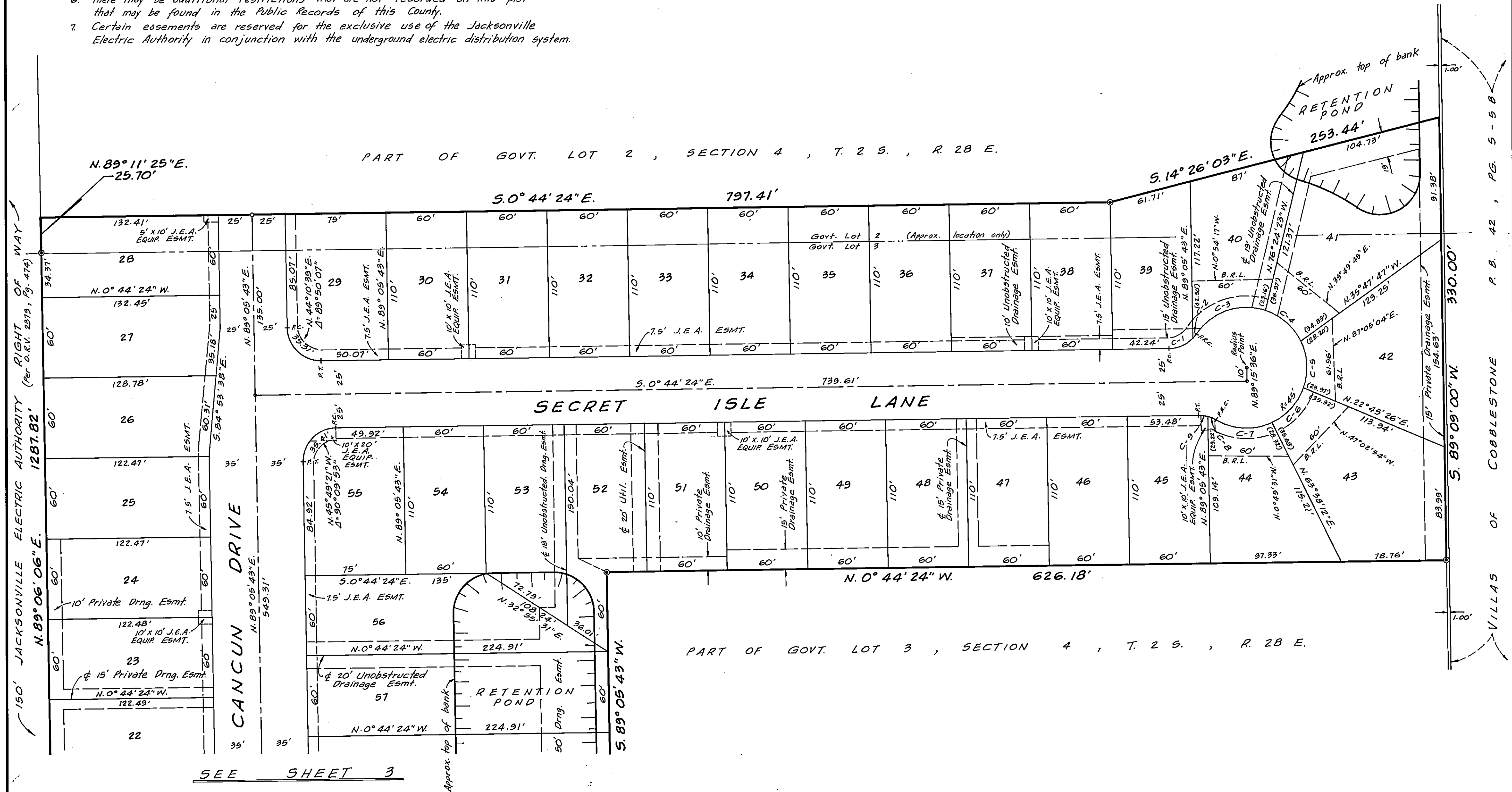
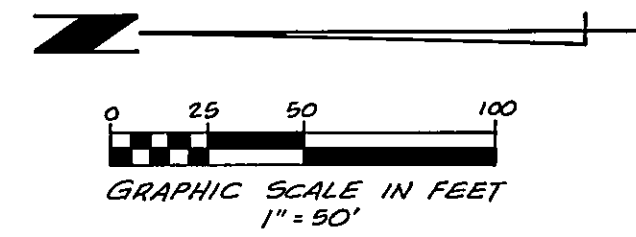
BEING A PORTION OF GOVERNMENT LOTS 2 AND 3,
SECTION 4, TOWNSHIP 2 SOUTH, RANGE 28 EAST,
OF THE CITY OF JACKSONVILLE, DUVAL COUNTY, FLORIDA.

PLAT BOOK 47 PAGE 54C

SHEET 4 OF 4 SHEETS.

NOTES:

1. \odot Denotes permanent reference monument.
2. \circ Denotes permanent control point.
3. All corner radii are 25 feet, unless otherwise noted.
4. Bearings and distances shown on curves refer to the chord.
5. Bearings are based on Official Records Volume 6244, Page 435 for the Easterly right of way line of Monument Road of $N.0^{\circ}44'48''W.$
6. There may be additional restrictions that are not recorded on this plat that may be found in the Public Records of this County.
7. Certain easements are reserved for the exclusive use of the Jacksonville Electric Authority in conjunction with the underground electric distribution system.



CURVE TABLE			
CURVE	DELTA	RADIUS	CHORD
C-1	55° 08' 57"	25.00'	S. 23° 20' 41" E. 19.22'
C-2	9° 56' 24"	25.00'	S. 50° 55' 09" E. 4.33'
C-3	73° 52' 02"	45.00'	S. 18° 57' 20" E. 54.08'
C-4	45° 46' 15"	45.00'	S. 40° 51' 48" W. 35.00'
C-5	45° 46' 15"	45.00'	S. 86° 38' 03" W. 35.00'
C-6	45° 46' 15"	45.00'	N. 47° 39' 42" W. 35.00'
C-7	54° 58' 26"	45.00'	N. 2° 46' 38" E. 41.54'
C-8	15° 52' 56"	25.00'	N. 22° 19' 23" E. 6.91'
C-9	15° 07' 19"	25.00'	N. 6° 49' 16" E. 6.58'