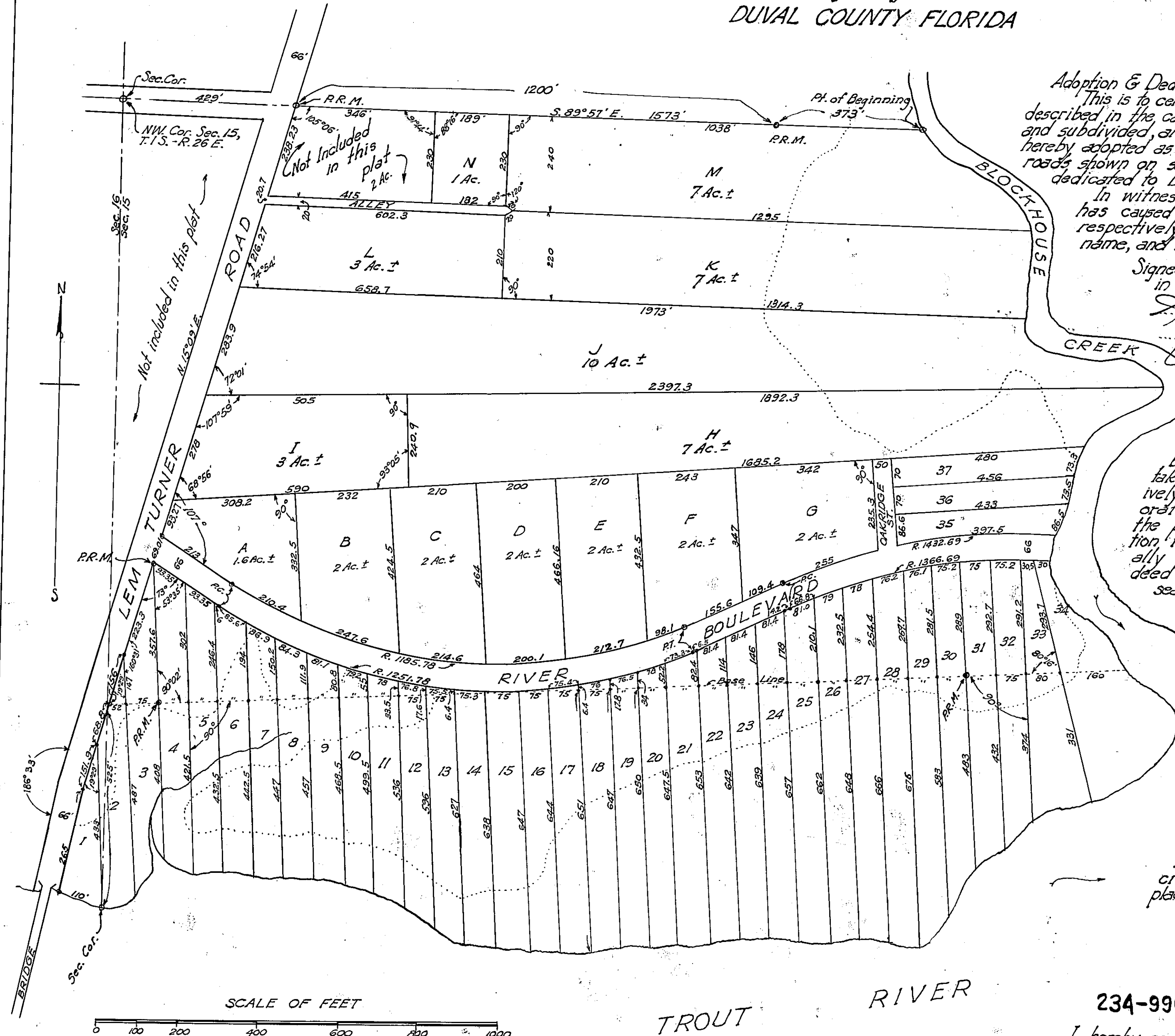


TROUT RIVER ESTATES

Being a subdivision of part of Sections 15 & 16, T.1 S. - R. 26 E. more particularly described as:
 Beginning at the intersection of the north line of Section 15 and the west edge of Blockhouse
 Creek, said point being S 89° 57' E. 2002 ft. from the northwest corner of said sec. 15, thence
 N 89° 57' W. 1227 ft., thence S 0° 03' W. 230 ft., thence N 89° 57' W. 408 ft., thence S 15° 09' W. along
 the east side of Lem Turner Road 1825.34 ft., to the north edge of Trout River, thence easterly
 along the edge of Trout River to the mouth of Blockhouse Creek, thence northerly along the
 westerly edge of Blockhouse Creek to beginning.

DUVAL COUNTY FLORIDA



Adoption & Dedication.
 This is to certify that the undersigned are the lawful owners of the lands described in the caption hereof, that they have caused the same to be surveyed and subdivided, and that this plat made in accordance with said survey is hereby adopted as the true and correct plat of said lands, and all streets and roads shown on said plat are hereby irrevocably and without reservations dedicated to Duval County, Florida, and its successors.

In witness whereof the said Treasure Point Company, a corporation, has caused these presents, to be signed by its President and its Secretary respectively, by and with authority of its Board of Directors, in its name, and its corporate seal, affixed this 22 day of July, A.D. 1929.

Signed and sealed
 in the presence:
 J. D. Kelly }
 John M. ... } witnesses

Treasure Point Company
 E. V. Toomer (its President)
 M. H. Haughton (its Secretary)

State of Florida
 County of Duval

I hereby certify that on this day personally appeared before me an officer, duly authorized to administer oaths and take acknowledgements, E. V. Toomer and M. H. Haughton, respectively, President and Secretary of the Treasure Point Company, a corporation under the laws of the State of Florida, to the known to be the persons described in and who executed the foregoing dedication for the uses and purposes therein expressed, and who severally acknowledged the execution thereof to be their free act and deed as such officers, and that they affixed thereto the official seal of said corporation, and the said dedication is the act and deed of said corporation.

Witness my signature and official seal at Jacksonville in the County of Duval and State of Florida, this 22 day of July, A.D. 1929.

J. D. Kelly
 Notary Public State of Florida at Large
 My Commission expires March 1st. 1932

This is to certify that the above plat is a correct representation of the lands surveyed and subdivided and described above, that permanent reference monuments have been placed according to laws of the State of Florida of 1925.
 Signed this 22 day of July, A.D. 1929.

Ellis Curtis & Kooker
 By W. D. ...

234-996-A

I hereby certify that this plat has been examined and that it complies in form with Chapter No. 10275, Laws of Florida of 1925, and is filed for record and recorded in Plat Book 14, page 26 of the Public Records of Duval County, Florida, this 31 day of Aug. A.D. 1929.

Frank Brown, Clerk
 By N. Williams, Deputy Clerk

Examined and approved this 1st day of August 1929
 by Board of County Commissioners of Duval County, Florida

Attest Frank Brown, Clerk

