

APPROVED
DATE 22 Aug 1966

BY: William M. Head
COUNTY ENGINEER
J. Henry Blount
COUNTY ATTORNEY

Georgetown Estates - Unit Two

Duval County, Florida

PLAT BOOK 33 PAGE 100

SHEET ONE OF TWO SHEETS.

TAXES VERIFIED

BY: R.L.D.

Being A Subdivision Of Tract 1 and Portions of Tracts 2, 3, and 4 Block 1, Section 11, Township 3 South, Range 25 East, Jacksonville Heights According to Plat Thereof, Recorded in Plat Book 5, Page 93, Current Public Records Of Duval County, Florida; Being More Particularly Described As Follows:

For Point of Beginning Commence at a Permanent Reference Monument at the Northeast Corner of Lot 15 Block 3 of Georgetown Estates Unit One, according to the Plat thereof as recorded in the aforementioned Public Records in Plat Book 33 at Pages 11 & 11A; run thence Westerly along the Northerly Boundary of said Georgetown Estates Unit One the following six (6) courses and distances; S87°38'10"W, 629.84 feet; N84°51'54"W, 76.63 feet; N81°08'12"W, 77.45 feet; S87°38'10"W, 406.39 feet; N0°43'10"E, 36.26 feet; N89°16'50"W, 190.00 feet to a point on the West Line of the aforementioned Tract 4; thence N0°43'10"E along said West Line, 699.63 feet to a point on the North Line of Section 11, Township 3 South, Range 25 East; thence N87°04'10"E along said North Line, 1402.84 feet to a point on the Westerly Right of Way Line of Firestone Road (a 66 foot R/W); thence S2°07'10"W along said Right of Way Line 786.31 feet to the POINT OF BEGINNING.

ADOPTION and DEDICATION:

This is to Certify that the undersigned being the Lawful owners of the Lands Described in the Caption have caused the same to be surveyed and subdivided and that this Plat, made in accordance with said survey, is hereby adopted as the true and correct Plat of said Lands and that all courts, drives, rights of way and easements for drainage and utilities shown on said Plat are irrevocably and without reservation dedicated to DUVAL COUNTY, FLORIDA and its successors. IN WITNESS WHEREOF, The undersigned have hereunto set their hands and seals on this 8th day of August, 1966.

Edward E. Handland Jr.
WITNESS
Raymond V. Lawan
WITNESS

L.A. Melvin Jr.
L.A. MELVIN JR.
Audrey L. Melvin
AUDREY L. MELVIN

STATE of FLORIDA:

COUNTY of BREVARD:

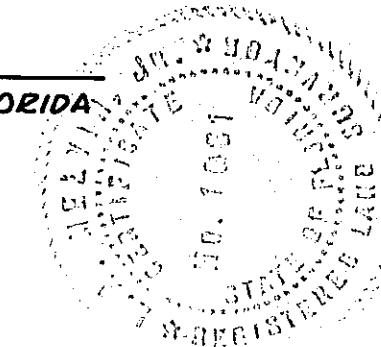
I hereby certify that on this day, personally appeared before me, an officer duly authorized to administer oaths and take acknowledgements, L.A. MELVIN JR. and AUDREY L. MELVIN to me known to the persons described in and who executed the foregoing dedication and severally acknowledged before me that they executed the same freely and voluntarily for the uses and purposes therein expressed. Witness my signature and official seal at Titusville, Brevard County, Florida this 8th day of August, 1966.

Mary E. [Signature]
NOTARY PUBLIC STATE OF FLORIDA AT LARGE
MY COMMISSION EXPIRES JULY 5th 1968

SURVEYORS CERTIFICATION:

This is to certify that the plat hereon is a correct representation of the lands surveyed, subdivided and described hereon and that permanent reference monuments have been placed according to the laws of the State of Florida and that all DUVAL COUNTY zoning rules and regulations have been complied with. Signed this 8th day of AUG. 1966.

L.A. Melvin Jr.
REGISTERED SURVEYOR NO. 1061, FLORIDA



COMMISSION APPROVAL:

Examined and approved this 22ND day of AUGUST 1966 by the BOARD of COUNTY COMMISSIONERS of DUVAL COUNTY, FLORIDA.

William Warren
CHAIRMAN

S. Morgan Slaughter
CLERK

BY: Perry M. Smith
DEPUTY CLERK

NO. 66-46810

I hereby certify that this plat has been examined and that it complies in form with Chapter 10275, Laws of Florida of 1925 and is filed for record and recorded in PLAT BOOK 33 PAGES 100-100A of the Public Records of DUVAL COUNTY, FLORIDA this 23rd day of August 1966.

S. Morgan Slaughter
CLERK

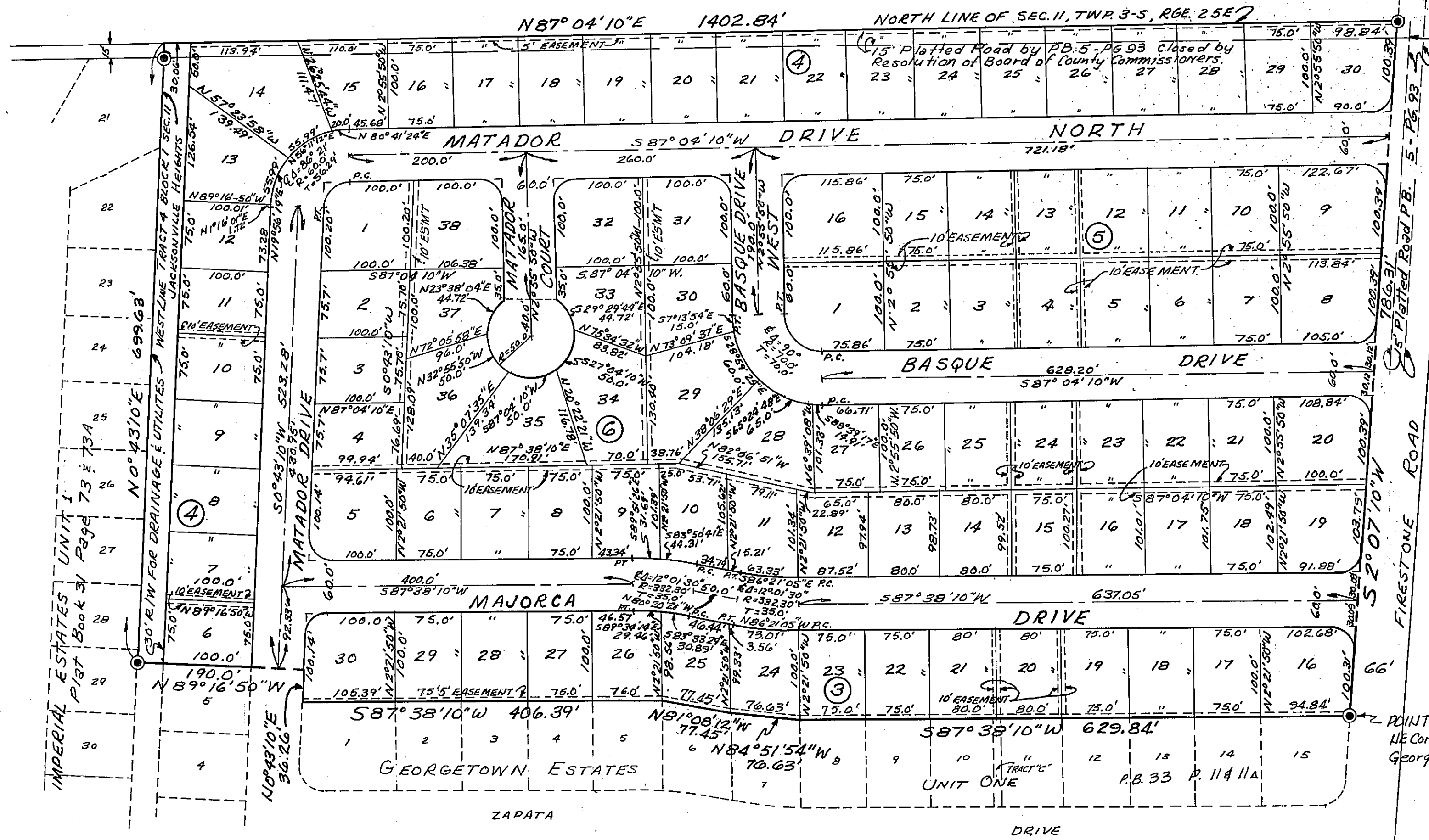
BY: Robert C. Tucker
DEPUTY CLERK

SHEET TWO OF TWO SHEETS
SEE SHEET ONE FOR CAPTION

APPROVED
DATE 22 Aug 1966
BY: William M. Hardy
COUNTY ENGINEER
Henry Blount
COUNTY ATTORNEY

Georgetown Estates - Unit Two

DUVAL COUNTY, FLORIDA



NORTHEAST CORNER OF
TRACT 1, BLOCK 1, SEC. 11
T-3-S, R-25E
JACKSONVILLE HEIGHTS
P.B. 5-PG. 33.

FIRESTONE ROAD
52°07'10"W

POINT OF BEGINNING
NE Corner Lot 15 Block 3
Georgetown Estates Unit One



NOTES:

1. PERMANENT REFERENCE MONUMENTS SHOWN THUS: (circle with dot)
2. ALL LOTS HAVE A 25' BUILDING SET BACK FROM STREET RIGHT-OF-WAY LINE.
3. BEARING AND DISTANCES SHOWN ON CURVES REFER TO CHORD BEARINGS AND DISTANCES
4. ALL CORNER RADII TO BE 25' UNLESS OTHERWISE NOTED.
5. CORNER DISTANCES SHOWN EXTEND TO STREET INTERSECTION, UNLESS OTHERWISE SHOWN.
6. ALL EASEMENTS SHOWN HEREON ARE FOR DRAINAGE AND UTILITIES.

GRAPHIC SCALE

