

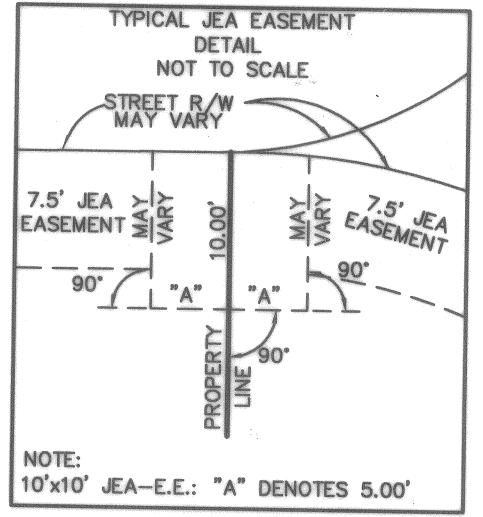
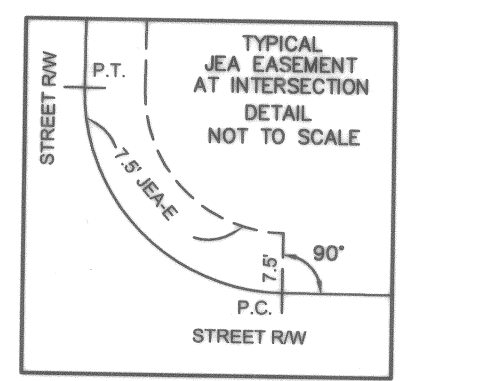
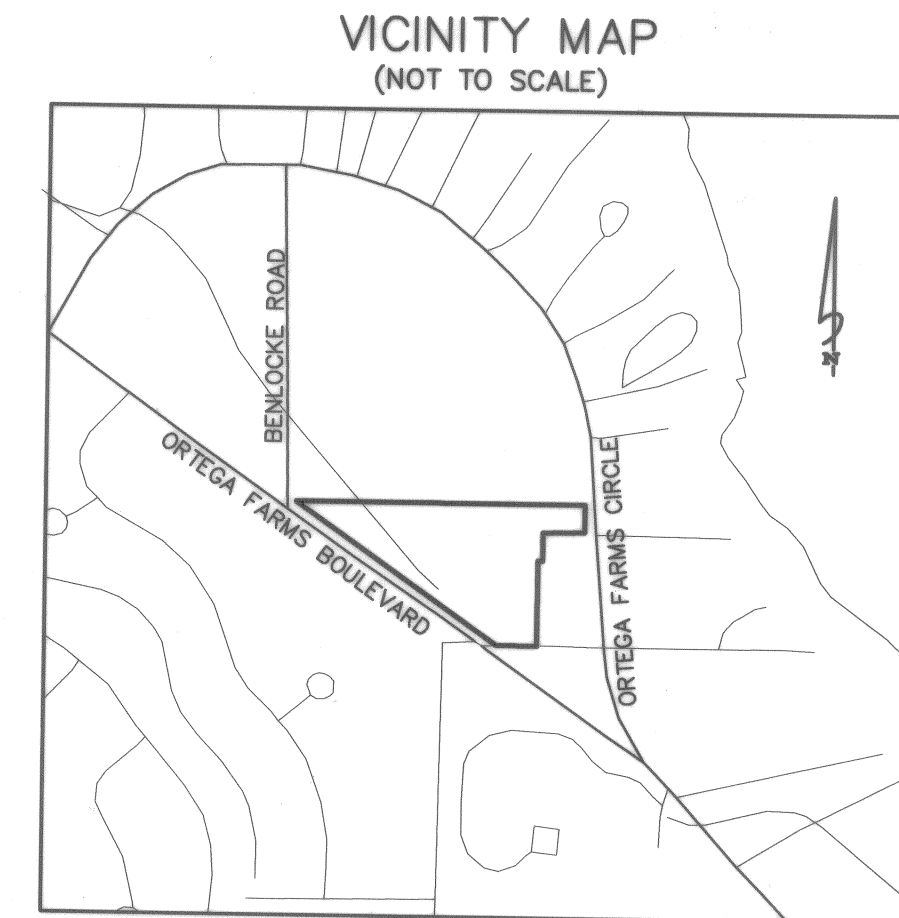
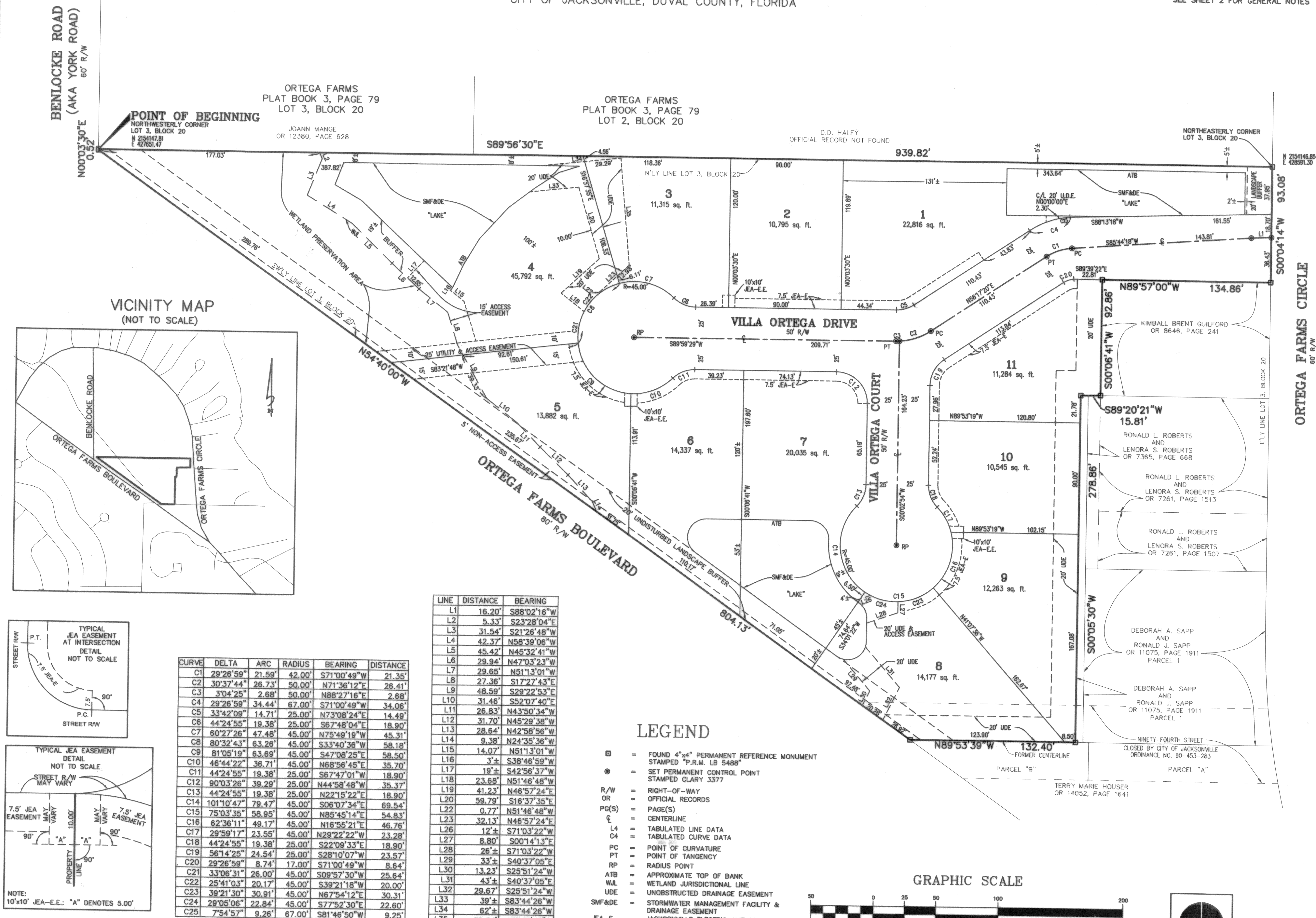


# VILLA ORTEGA

A REPLAT OF A PORTION OF LOT 3, BLOCK 20, ORTEGA COMPANY'S REPLAT OF ORTEGA FARMS, AS RECORDED IN PLAT BOOK 16, PAGES 3 AND 3A, OF THE CURRENT PUBLIC RECORDS OF DUVAL COUNTY, FLORIDA, TOGETHER WITH A PORTION OF THE NORTHERLY ONE-HALF OF NINETY-FOURTH STREET (CLOSED BY CITY OF JACKSONVILLE ORDINANCE NO. 80-453-283), CITY OF JACKSONVILLE, DUVAL COUNTY, FLORIDA

PLAT BOOK 65 PAGE 63

SHEET 2 OF 2 SHEETS  
SEE SHEET 2 FOR GENERAL NOTES

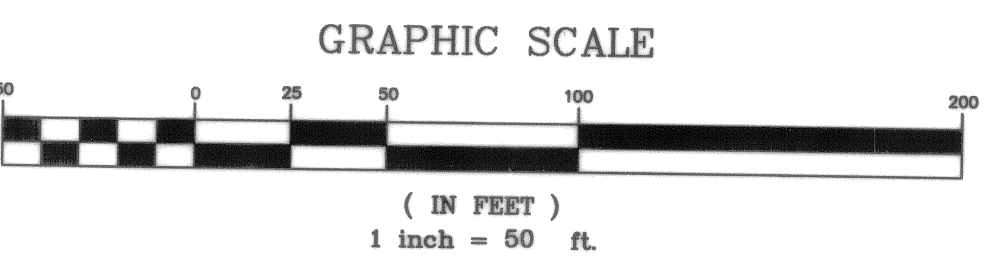


CURVE	DELTA	ARC	RADIUS	BEARING	DISTANCE
C1	29°26'59"	21.59'	42.00'	S71°00'49"W	21.35'
C2	30°37'44"	26.73'	50.00'	N71°36'12"E	26.41'
C3	3°04'25"	2.68'	50.00'	N88°27'16"E	2.68'
C4	29°26'59"	34.44'	67.00'	S71°00'49"W	34.68'
C5	33°42'09"	14.71'	25.00'	N73°08'24"E	14.49'
C6	44°24'55"	19.38'	25.00'	S67°48'04"E	18.90'
C7	60°27'26"	47.48'	45.00'	N75°49'19"W	45.31'
C8	80°32'43"	63.26'	45.00'	S33°40'36"W	58.18'
C9	81°05'19"	63.69'	45.00'	S47°08'25"E	58.50'
C10	46°44'22"	36.71'	45.00'	N68°56'45"E	35.70'
C11	44°24'55"	19.38'	25.00'	S67°47'01"W	18.90'
C12	90°03'26"	39.29'	25.00'	N44°58'48"W	35.37'
C13	44°24'55"	19.38'	25.00'	N22°15'22"E	18.90'
C14	101°10'47"	79.47'	45.00'	S06°07'34"E	69.54'
C15	75°03'35"	58.95'	45.00'	N85°45'14"E	54.83'
C16	62°36'11"	49.17'	45.00'	N16°55'21"E	46.76'
C17	29°59'17"	23.55'	45.00'	N29°22'22"W	23.28'
C18	44°24'55"	19.38'	25.00'	S22°09'33"E	18.90'
C19	56°14'25"	24.54'	25.00'	S28°10'07"W	23.57'
C20	29°26'59"	8.74'	17.00'	S71°00'49"W	8.64'
C21	33°06'31"	26.00'	45.00'	S09°57'30"W	25.64'
C22	25°41'03"	20.17'	45.00'	S39°21'18"W	20.00'
C23	39°21'30"	30.91'	45.00'	N67°54'12"E	30.31'
C24	29°05'06"	22.84'	45.00'	S77°52'30"E	22.60'
C25	7°54'57"	9.26'	67.00'	S81°46'50"W	9.25'

LINE	DISTANCE	BEARING
L1	16.20'	S88°02'16"W
L2	5.33'	S23°28'04"E
L3	31.54'	S21°26'48"W
L4	42.37'	N58°39'06"W
L5	45.42'	N45°32'41"W
L6	29.94'	N47°03'23"W
L7	29.65'	N51°13'01"W
L8	27.36'	S17°27'43"E
L9	48.59'	S29°22'53"E
L10	31.46'	S52°07'40"E
L11	26.83'	N43°50'34"W
L12	31.70'	N45°29'38"W
L13	28.64'	N42°58'56"W
L14	9.38'	N24°35'36"W
L15	14.07'	N51°13'01"W
L16	3'±	S38°56'59"W
L17	19'±	S42°56'37"W
L18	23.68'	N51°46'48"W
L19	41.23'	N46°57'24"E
L20	59.79'	S16°37'35"E
L21	0.77'	N51°46'48"W
L22	32.13'	N46°57'24"E
L23	12'±	S71°03'22"W
L24	8.80'	S00°41'13"E
L25	39'±	S29°51'24"W
L26	39'±	S83°44'28"W
L27	82'±	S83°44'28"W
L28	86.34'	N05°08'48"W

## LEGEND

- = FOUND 4"x4" PERMANENT REFERENCE MONUMENT STAMPED "P.R.M. LB 5488"
- = SET PERMANENT CONTROL POINT STAMPED CLARY 3377
- R/W OR = RIGHT-OF-WAY OR OFFICIAL RECORDS
- PG(S) = PAGE(S)
- ε = CENTERLINE
- L4 = TABULATED LINE DATA
- C4 = TABULATED CURVE DATA
- PC = POINT OF CURVATURE
- PT = POINT OF TANGENCY
- RP = RADIUS POINT
- ATB = APPROXIMATE TOP OF BANK
- WL = WETLAND JURISDICTIONAL LINE
- UDE = UNOBSTRUCTED DRAINAGE EASEMENT
- SMF&DE = STORMWATER MANAGEMENT FACILITY & DRAINAGE EASEMENT
- JEA-E = JACKSONVILLE ELECTRIC AUTHORITY EASEMENT
- JEA-EE = JACKSONVILLE ELECTRIC AUTHORITY EQUIPMENT EASEMENT



PREPARED BY:  
**Clary & Associates, Inc.**  
PROFESSIONAL LAND SURVEYORS  
3830 CROWN POINT ROAD  
JACKSONVILLE, FLORIDA 32257  
(904) 260-2703

P.S.D. NO.: 2005-029  
CITY DEVELOPMENT NO.: 6989