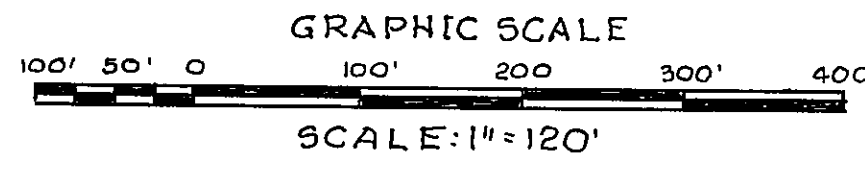
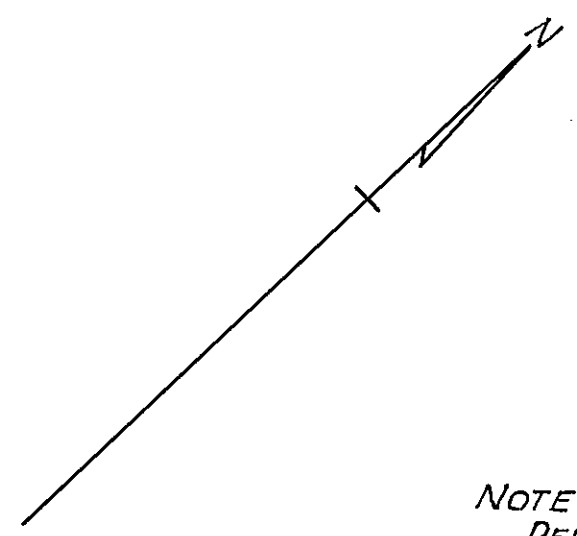
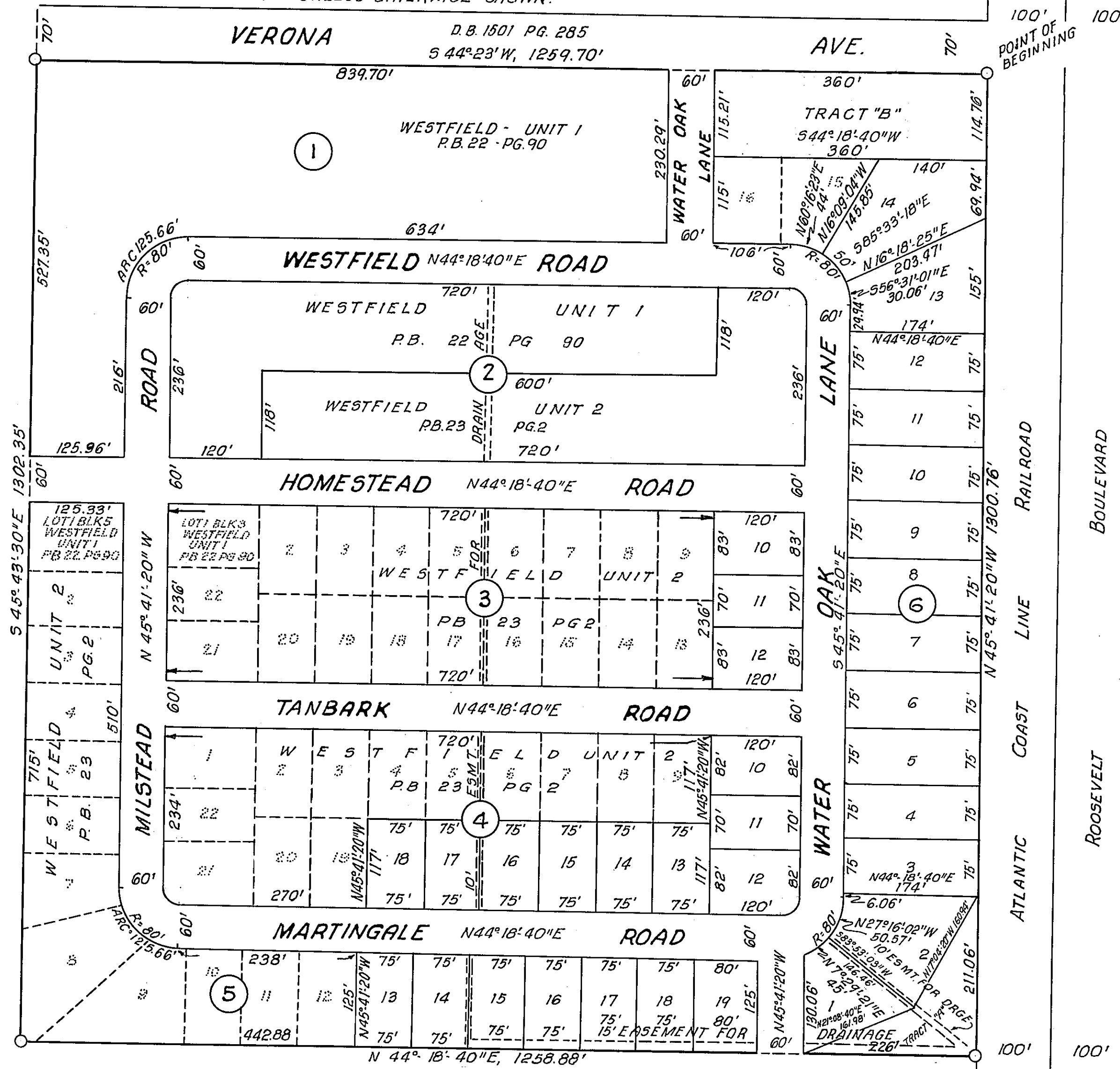


BEING A SUBDIVISION OF TRACT A OF BLOCK 3, TRACT B OF BLOCK 4 AND TRACT C OF BLOCK 5 AS SHOWN ON MAP OF WESTFIELD UNIT 2 AS RECORDED IN PLAT BOOK 23 PAGE 2 OF THE CURRENT PUBLIC RECORDS OF DUVAL COUNTY, FLORIDA, TOGETHER WITH ALL OF BLOCK 6 (EXCEPT THAT PORTION PLATTED AS LOTS 15 AND 16 AND SHOWN ON MAP OF WESTFIELD UNIT 1 AS RECORDED IN PLAT BOOK 22, PAGE 90 OF SAID PUBLIC RECORDS.)



NOTE: PERMANENT REFERENCE MONUMENTS SHOWN THUS: O ALL BEARINGS AND DISTANCES ON CURVES REFER TO CHORDS UNLESS OTHERWISE SHOWN.

APPROVED  
DATE Feb. 12, 1952  
BY: A. N. Solles by F.E.W.  
COUNTY ENGINEER  
Johnny Blount  
COUNTY ATTORNEY



NOTE: ALL DISTANCES ON BLOCK CORNERS ARE TO STREET INTERSECTIONS  
ALL RADII NOT SHOWN ARE 20 FEET.

ADOPTION AND DEDICATION  
THIS IS TO CERTIFY THAT C.C. ESTATES, INC. A CORPORATION UNDER THE LAWS OF THE STATE OF FLORIDA IS THE LAWFUL OWNER OF THE LANDS DESCRIBED IN THE CAPTION HEREOF AND THAT IT HAS CAUSED THE SAME TO BE SURVEYED AND SUBDIVIDED AND THIS PLAT MADE IN ACCORDANCE WITH SAID SURVEY IS HEREBY ADOPTED AS THE TRUE AND CORRECT PLAT OF SAID LANDS AND ALL ROADS AND EASEMENTS SHOWN ON SAID PLAT ARE HEREBY IRREVOCABLY AND WITHOUT RESERVATIONS DEDICATED TO THE COUNTY OF DUVAL AND ITS SUCCESSORS.  
IN WITNESS WHEREOF C.C. ESTATES, INC. HAS CAUSED THESE PRESENTS TO BE SIGNED BY ITS PRESIDENT AND SECRETARY RESPECTIVELY, BY AND WITH AUTHORITY OF ITS BOARD OF DIRECTORS, IN ITS NAME AND WITH ITS CORPORATE SEAL AFFIXED THIS 11<sup>TH</sup> DAY OF FEBRUARY A.D. 1952.

SIGNED AND SEALED IN THE PRESENCE OF  
Louise Boddell  
Mary Ellen Yelphie WITNESSES

C. C. ESTATES, INC.  
R Eugene Orr  
ITS PRESIDENT  
Hugh Alderman  
ITS SECRETARY



STATE OF FLORIDA  
COUNTY OF DUVAL  
I HEREBY CERTIFY THAT ON THIS 11<sup>TH</sup> DAY OF FEBRUARY A.D. 1952 PERSONALLY APPEARED BEFORE ME AN OFFICER DULY AUTHORIZED TO ADMINISTER OATHS AND TAKE ACKNOWLEDGEMENTS R. EUGENE ORR AND HUGH ALDERMAN RESPECTIVELY PRESIDENT AND SECRETARY OF C.C. ESTATES, INC. A CORPORATION UNDER THE LAWS OF THE STATE OF FLORIDA, TO ME WELL KNOWN TO BE THE PERSONS DESCRIBED IN AND WHO EXECUTED THE FOREGOING DEDICATION AND WHO SEVERALLY ACKNOWLEDGED BEFORE ME THAT THEY EXECUTED THE SAME FREELY AND VOLUNTARILY AS SUCH OFFICERS FOR THE USES AND PURPOSES THEREIN EXPRESSED AND THAT THEY AFFIXED HERETO THE OFFICIAL SEAL OF SAID CORPORATION.  
WITNESS MY SIGNATURE AND OFFICIAL SEAL AT JACKSONVILLE, IN THE COUNTY OF DUVAL AND STATE OF FLORIDA.

R. L. Croasdel  
NOTARY PUBLIC STATE OF FLORIDA AT LARGE  
MY COMMISSION EXPIRES MARCH 11, 1953



THIS IS TO CERTIFY THAT THE ABOVE PLAT IS A CORRECT REPRESENTATION OF THE LANDS SURVEYED AND PLATTED AND DESCRIBED ABOVE AND THAT PERMANENT REFERENCE MONUMENTS HAVE BEEN PLACED THEREON ACCORDING TO THE LAWS OF THE STATE OF FLORIDA AND THAT ALL THE DUVAL COUNTY ZONING RULES AND REGULATIONS HAVE BEEN COMPLIED WITH.  
SIGNED THIS 11<sup>TH</sup> DAY OF FEBRUARY A.D. 1952

R. L. CROASDEL AND Co. (NOT INC.)  
R. L. Croasdel  
REGISTERED SURVEYOR-CERTIFICATE NO. 708



EXAMINED AND APPROVED THIS 12<sup>TH</sup> DAY OF February A.D. 1952 BY THE BOARD OF COUNTY COMMISSIONERS OF DUVAL COUNTY, FLORIDA.

BY John Marshall CHAIRMAN  
ATTEST Edward W. Thomas ALMA PULLIPPE  
EX-OFFICIO CLERK

855-505 A

I HEREBY CERTIFY THAT THIS PLAT HAS BEEN EXAMINED AND THAT IT COMPLIES IN FORM WITH CHAPTER NO. 10275, LAWS OF FLORIDA OF 1925 AND IS FILED FOR RECORD AND RECORDED IN PLAT BOOK NO. 23 PAGE NO. 23 OF THE PUBLIC RECORDS OF DUVAL COUNTY, FLORIDA, THIS 13<sup>TH</sup> DAY OF February A.D. 1952.

Edward W. Thomas  
CLERK  
Blount  
DEPUTY CLERK

