

WHITE OAK TRAIL

Being a portion of the Northwest 1/4 of Section 8, Township 1 South, Range 26 East, City of Jacksonville, Duval County, Florida.

CAPTION

A PORTION OF THE NORTHWEST 1/4 OF SECTION 8, TOWNSHIP 1 SOUTH, RANGE 26 EAST, DUVAL COUNTY, FLORIDA, BEING MORE PARTICULARLY DESCRIBED AS FOLLOWS:

FOR A POINT OF REFERENCE, COMMENCE AT THE INTERSECTION OF THE WESTERLY LINE OF SAID SECTION 8, WITH THE SOUTHERLY RIGHT OF WAY LINE OF DUNN AVENUE (A 100 FOOT RIGHT OF WAY AS NOW ESTABLISHED); THENCE NORTH 84°15'36" EAST, ALONG SAID SOUTHERLY RIGHT OF WAY LINE OF DUNN AVENUE, A DISTANCE OF 128.83 FEET, TO THE INTERSECTION WITH THE SOUTHERLY RIGHT OF WAY LINE OF CREATIVE DRIVE (A VARIABLE WIDTH RIGHT OF WAY AS SHOWN ON THE STATE OF FLORIDA DEPARTMENT OF TRANSPORTATION RIGHT OF WAY MAPS, SECTION 12001-2410, DATED MARCH 15, 1978); THENCE SOUTHEASTERLY AND SOUTHWESTERLY, ALONG THE RIGHT OF WAY LINE OF SAID CREATIVE DRIVE, RUN THE FOLLOWING SIX (6) COURSES AND DISTANCES: COURSE NO. 1: SOUTH 83°55'18" EAST, A DISTANCE OF 307.21 FEET, TO THE POINT OF BEGINNING; COURSE NO. 2: SOUTH 83°55'18" EAST, A DISTANCE OF 169.26 FEET, TO THE POINT OF CURVATURE OF A NON-TANGENT CURVE TO THE RIGHT, BEING CONCAVE SOUTHWESTERLY AND HAVING A RADIUS OF 156.00 FEET; COURSE NO. 3: SOUTHEASTERLY, ALONG AND AROUND THE ARC OF LAST SAID CURVE A DISTANCE OF 301.68 FEET, SAID ARC BEING SUBTENDED BY A CHORD BEARING AND DISTANCE OF SOUTH 36°44'18" EAST 256.82 FEET, TO THE END OF SAID NON-TANGENT CURVE; COURSE NO. 4: SOUTH 18°24'31" WEST, A DISTANCE OF 613.25 FEET, TO THE POINT OF CURVATURE OF A CURVE TO THE RIGHT, BEING CONCAVE NORTHWESTERLY AND HAVING A RADIUS OF 3665.72 FEET; COURSE NO. 5: SOUTHWESTERLY, ALONG AND AROUND THE ARC OF LAST SAID CURVE, A DISTANCE OF 604.54 FEET, SAID ARC BEING SUBTENDED BY A CHORD BEARING AND DISTANCE OF SOUTH 23°10'20" WEST 608.84 FEET, TO THE POINT OF TANGENCY OF SAID CURVE; COURSE NO. 6: SOUTH 21°56'04" WEST, A DISTANCE OF 41.41 FEET, TO THE NORTHEAST CORNER OF THOSE CERTAIN LANDS DESCRIBED AND RECORDED IN OFFICIAL RECORDS VOLUME 1505, PAGE 611 OF THE CURRENT PUBLIC RECORDS OF SAID COUNTY; THENCE SOUTH 87°21'45" WEST, ALONG THE NORTHERLY LINE OF SAID LAST MENTIONED LANDS, A DISTANCE OF 593.20 FEET, TO THE NORTHWEST CORNER THEREOF; THENCE SOUTH 04°14'34" EAST, ALONG THE WESTERLY LINE OF LAST SAID LANDS AND THE WESTERLY LINE OF LANDS DESCRIBED IN OFFICIAL RECORDS VOLUME 8444, PAGE 1655 OF SAID CURRENT PUBLIC RECORDS, A DISTANCE OF 420.06 FEET, TO THE SOUTHWEST CORNER THEREOF; THENCE NORTH 84°10'40" WEST, A DISTANCE OF 361.46 FEET, TO A FOUND 1/2" IRON PIPE, BEING SITUATE IN THE AFORESAID WESTERLY LINE OF SECTION 8; THENCE NORTH 00°48'26" WEST, ALONG THE WESTERLY LINE OF SAID SECTION 8, A DISTANCE OF 634.42 FEET, TO A POINT; THENCE NORTH 54°34'45" EAST, A DISTANCE OF 280.11 FEET, TO A POINT; THENCE NORTH 02°51'21" WEST, A DISTANCE OF 514.71 FEET, TO A POINT; THENCE NORTH 20°21'42" EAST, A DISTANCE OF 584.03 FEET, TO A POINT SITUATE ON THE AFORESAID SOUTHERLY RIGHT OF WAY LINE OF CREATIVE DRIVE AND THE POINT OF BEGINNING.

CONTAINING 34.665 ACRES AND/OR 1510,023 SQUARE FEET, MORE OR LESS.

ADOPTION AND DEDICATION

THIS IS TO CERTIFY THAT WHITE OAK TRAIL-MLG, INC., A FLORIDA CORPORATION, UNDER THE LAWS OF THE STATE OF FLORIDA, IS THE LAWFUL OWNER OF THE LANDS DESCRIBED IN THE CAPTION HEREON, KNOWN AS WHITE OAK TRAIL, HAVING CAUSED THE SAME TO BE SURVEYED AND SUBDIVIDED, AND THAT BANK OF AMERICA, N.A., IS THE HOLDER OF THE MORTGAGE ON SAID LANDS. THIS PLAT BEING MADE IN ACCORDANCE WITH SAID SURVEY, IS HEREBY ADOPTED AS A TRUE AND CORRECT PLAT OF THOSE LANDS. ALL STREETS, ROADS, PARKWAYS, LANES, COURTS, WALKWAYS, NON-ACCESS EASEMENTS, UNOBSTRUCTED DRAINAGE EASEMENTS AND UNOBSTRUCTED DRAINAGE AND ACCESS EASEMENTS ARE HEREBY IRREVOCABLY AND WITHOUT RESERVATION DEDICATED TO THE CITY OF JACKSONVILLE, ITS SUCCESSORS AND ASSIGNS. THE DRAINAGE EASEMENTS, OVER, UNDER, ACROSS AND THROUGH THE LAKE/STORMWATER MANAGEMENT FACILITIES, AS SHOWN ON THIS PLAT, ARE HEREBY IRREVOCABLY DEDICATED TO THE CITY OF JACKSONVILLE, ITS SUCCESSORS AND ASSIGNS, AND ARE SUBJECT TO THE FOLLOWING COVENANTS WHICH SHALL RUN WITH THE LAND:

1) THE DRAINAGE EASEMENTS HEREBY DEDICATED SHALL PERMIT THE CITY OF JACKSONVILLE, ITS SUCCESSORS AND ASSIGNS TO DISCHARGE INTO SAID LAKE/STORMWATER MANAGEMENT FACILITIES WHICH THESE EASEMENTS TRAVERSE, ALL WATER WHICH MAY FALL ON OR COME UPON ALL STREETS, ROADS, PARKWAYS, LANES AND COURTS (AS NOTED ABOVE) HEREBY DEDICATED, TOGETHER WITH ALL SUBSTANCES OR MATTER WHICH MAY FLOW OR PASS FROM SUCH STREETS, ROADS, PARKWAYS, LANES AND COURTS FROM ADJACENT LAND OR FROM ANY OTHER SOURCE OR PUBLIC MATTERS INTO OR THROUGH SAID LAKE/STORMWATER MANAGEMENT FACILITIES, WITHOUT ANY LIABILITY WHATSOEVER ON THE PART OF THE CITY OF JACKSONVILLE, ITS SUCCESSORS AND ASSIGNS, FOR ANY DAMAGE, INJURIES OR LOSS TO PERSONS OR PROPERTY RESULTING FROM THE ACCEPTANCE OR USE OF THESE DRAINAGE EASEMENTS BY THE CITY OF JACKSONVILLE, ITS SUCCESSORS AND ASSIGNS.

2) THE LAKE/STORMWATER MANAGEMENT FACILITIES SHOWN ON THIS PLAT ARE OWNED IN FEE SIMPLE TITLE BY THE ABUTTING OWNERS, THEIR SUCCESSORS AND ASSIGNS, AND ALL MAINTENANCE AND ANY OTHER MATTERS PERTAINING TO SAID LAKE/STORMWATER MANAGEMENT FACILITIES ARE THE RESPONSIBILITY OF THE OWNERS, THEIR SUCCESSORS AND ASSIGNS. THE CITY OF JACKSONVILLE, BY ACCEPTANCE OF THIS PLAT, ASSUMES NO RESPONSIBILITY WHATSOEVER FOR SAID LAKE/STORMWATER MANAGEMENT FACILITIES.

3) THE CITY OF JACKSONVILLE, ITS SUCCESSORS AND ASSIGNS, SHALL NOT BE LIABLE NOR RESPONSIBLE FOR THE CREATION, OPERATION, FAILURE OR DESTRUCTION OF WATER LEVEL CONTROL EQUIPMENT WHICH MAY BE CONSTRUCTED OR INSTALLED BY THE DEVELOPER OR ANY OTHER PERSON WITHIN THE AREA OF THE LANDS HEREBY PLATTED, OR OF THE LAKE/STORMWATER MANAGEMENT FACILITIES SHOWN ON THIS PLAT, BUT SHALL HAVE THE RIGHT TO MODIFY THE WATER LEVEL INCLUDING THE REPAIR, REMOVAL OR REPLACEMENT OF THE LAKE/STORMWATER MANAGEMENT FACILITIES AND THE CONTROL STRUCTURES TO EFFECT ADEQUATE DRAINAGE.

THE OWNER, ITS SUCCESSORS AND ASSIGNS OF THE LANDS DESCRIBED AND CAPTIONED HEREON SHALL INDEMNIFY THE CITY OF JACKSONVILLE AND SAVE IT HARMLESS FROM SUITS, ACTION, DAMAGES AND LIABILITY AND EXPENSE IN CONNECTION WITH LOSS OF LIFE, BODILY OR PERSONAL INJURY OR PROPERTY DAMAGE OR ANY OTHER DAMAGE ARISING FROM OR OUT OF ANY OCCURRENCE IN, UPON, AT OR FROM THE LAKE/STORMWATER MANAGEMENT FACILITIES DESCRIBED ABOVE, OR ANY PART THEREOF, OCCASIONED WHOLLY OR IN PART BY ANY ACT OF OMISSION OF IT AGENT, CONTRACTORS, EMPLOYEES, SERVANTS, LICENSEES OR CONCESSIONAIRES WITHIN WHITE OAK TRAIL. THIS INDEMNIFICATION SHALL RUN WITH THE LAND AND THE SUCCESSORS AND ASSIGNS OF THE OWNER AND SHALL BE SUBJECT TO IT.

THE UNDERSIGNED OWNER DOES HEREBY RESERVE UNTO ITSELF AND ASSIGNS AN EASEMENT FOR LANDSCAPING AND CONSTRUCTION OF SIGNS OVER ALL NON-ACCESS EASEMENTS, AND ALSO OVER ALL OF THE LANDS DESIGNATED AS PRIVATE DRAINAGE EASEMENTS SHOWN ON THIS PLAT, THE MAINTENANCE RESPONSIBILITIES OF WHICH SHALL BE THOSE OF THE OWNER, ITS SUCCESSORS AND ASSIGNS.

ALL PLATTED UTILITY EASEMENTS SHALL PROVIDE THAT SUCH EASEMENTS ALSO BE EASEMENTS FOR THE CONSTRUCTION, INSTALLATION, MAINTENANCE, AND OPERATION OF CABLE TELEVISION SERVICES; PROVIDED, HOWEVER, NO SUCH CONSTRUCTION, INSTALLATION, MAINTENANCE, AND OPERATION OF CABLE TELEVISION SERVICES SHALL INTERFERE WITH THE FACILITIES AND SERVICES OF AN ELECTRIC, TELEPHONE, GAS, OR OTHER PUBLIC UTILITY. IN THE EVENT A CABLE TELEVISION COMPANY DAMAGES THE FACILITIES OF A PUBLIC UTILITY, IT SHALL BE SOLELY RESPONSIBLE FOR THE DAMAGES. THIS SECTION SHALL NOT APPLY TO THOSE PRIVATE EASEMENTS GRANTED TO OR OBTAINED BY A PARTICULAR ELECTRIC, TELEPHONE, GAS OR OTHER PUBLIC UTILITY. SUCH CONSTRUCTION, INSTALLATION, MAINTENANCE, AND OPERATION SHALL COMPLY WITH THE NATIONAL ELECTRICAL SAFETY CODE AS ADOPTED BY THE FLORIDA PUBLIC SERVICE COMMISSION, Florida Statutes 171.091(28).

ALL PRIVATE UNOBSTRUCTED DRAINAGE EASEMENTS ARE HEREBY DEDICATED TO THE WHITE OAK TRAIL HOMEOWNERS ASSOCIATION, INC., A FLORIDA NOT-FOR-PROFIT ORGANIZATION, FOR ITS EXCLUSIVE USE.

TRACT "A" (AMENITY TRACT) IS HEREBY DEDICATED TO THE WHITE OAK TRAIL HOMEOWNERS ASSOCIATION, INC., A FLORIDA NOT-FOR-PROFIT ORGANIZATION, FOR ITS EXCLUSIVE USE.

TRACT "C" (WETLAND TRACT) IS HEREBY DEDICATED TO THE WHITE OAK TRAIL HOMEOWNERS ASSOCIATION, INC., A FLORIDA NOT-FOR-PROFIT ORGANIZATION, FOR ITS EXCLUSIVE USE.

TRACT "L" (LIFT STATION), IS HEREBY IRREVOCABLY DEDICATED TO THE JEA, ITS SUCCESSORS AND ASSIGNS, FOR ITS NON-EXCLUSIVE USE IN CONJUNCTION WITH ITS WATER AND SEWER SYSTEMS.

ALL WATER AND SEWER EASEMENTS SHOWN HEREON ARE HEREBY IRREVOCABLY DEDICATED TO JEA, ITS SUCCESSORS AND ASSIGNS, FOR ITS EXCLUSIVE USE.

THOSE EASEMENTS DESIGNATED AS "JEA-EE" ARE HEREBY IRREVOCABLY DEDICATED TO JEA, ITS SUCCESSORS AND ASSIGNS, FOR ITS EXCLUSIVE USE IN CONJUNCTION WITH ITS UNDERGROUND ELECTRICAL SYSTEM.

THOSE EASEMENTS DESIGNATED AS "JEA-E" ARE HEREBY IRREVOCABLY DEDICATED TO JEA, ITS SUCCESSORS AND ASSIGNS, FOR ITS NON-EXCLUSIVE USE IN CONJUNCTION WITH ITS UNDERGROUND ELECTRICAL SYSTEM; PROVIDED HOWEVER, THAT NO PARALLEL UTILITIES MAY BE INSTALLED WITHIN SAID EASEMENTS.

NOTICE: THIS PLAT, AS RECORDED IN ITS GRAPHIC FORM, IS THE OFFICIAL DEPICTION OF THE SUBDIVIDED LANDS DESCRIBED HEREIN AND WILL, IN NO CIRCUMSTANCES BE SUPPLANTED IN AUTHORITY BY ANY OTHER GRAPHIC OR DIGITAL FORM OF THE PLAT. THERE MAY BE ADDITIONAL RESTRICTIONS THAT ARE NOT RECORDED ON THIS PLAT THAT MAY BE FOUND IN THE PUBLIC RECORDS OF THIS COUNTY. Florida Statutes 171.091(28)

IN WITNESS WHEREOF, WHITE OAK TRAIL-MLG, INC., A FLORIDA CORPORATION, AND BANK OF AMERICA, N.A., HAVE CAUSED THESE PRESENTS TO BE SIGNED THIS 21ST DAY OF July, A.D. 2003.

WHITE OAK TRAIL-MLG, INC.
A FLORIDA CORPORATION

WITNESS: Elsa B. Murphy

Elsa B. MURPHY
TYPE OR PRINT NAME

WITNESS: Patty A. Hite

PATY A. HITE
TYPE OR PRINT NAME

BY: Mitchell R. Montgomery
MITCHELL R. MONTGOMERY, PRESIDENT OF WHITE OAK TRAIL-MLG, INC., A FLORIDA CORPORATION

NOTARY FOR WHITE OAK TRAIL-MLG, INC.
A FLORIDA CORPORATION

STATE OF FLORIDA
COUNTY OF DUVAL

THE FOREGOING INSTRUMENT WAS ACKNOWLEDGED BEFORE ME THIS 21ST DAY OF July, A.D. 2003 BY MITCHELL R. MONTGOMERY, PRESIDENT OF WHITE OAK TRAIL-MLG, INC., A FLORIDA CORPORATION, WHO IS PERSONALLY KNOWN TO ME AND DID NOT TAKE AN OATH.

Jean B. Murphy

NOTARY PUBLIC, STATE OF FLORIDA

Elsa B. MURPHY
TYPE OR PRINT NAME

MY COMMISSION EXPIRES: Elsa B. MURPHY

Notary Public, State of Florida
My comm. expires February 11, 2006
Comm. No. DD 091396

BANK OF AMERICA, N.A.

WITNESS: Betty J. Johnson

Betty J. Johnson
TYPE OR PRINT NAME

WITNESS: Cindy Brown

Cindy Brown
TYPE OR PRINT NAME

Cindy Brown
TYPE OR PRINT NAME

NOTARY FOR BANK OF AMERICA, N.A.

STATE OF FLORIDA
COUNTY OF DUVAL

THE FOREGOING INSTRUMENT WAS ACKNOWLEDGED BEFORE ME THIS 21ST DAY OF July, A.D. 2003 BY G. ROSS McWILLIAMS, SENIOR VICE PRESIDENT OF BANK OF AMERICA, N.A. WHO IS PERSONALLY KNOWN TO ME AND DID NOT TAKE AN OATH.

Betty J. Johnson

NOTARY PUBLIC, STATE OF FLORIDA

Betty J. Johnson
TYPE OR PRINT NAME

MY COMMISSION EXPIRES: Betty J. Johnson

BETTY J. JOHNSON
MY COMMISSION # CG 877377
EXPIRES: December 31, 2003
Notary Public Underwriters

TYPE OR PRINT NAME

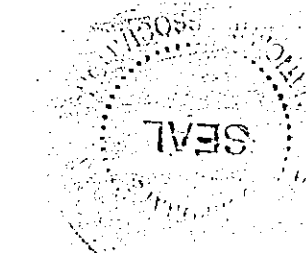
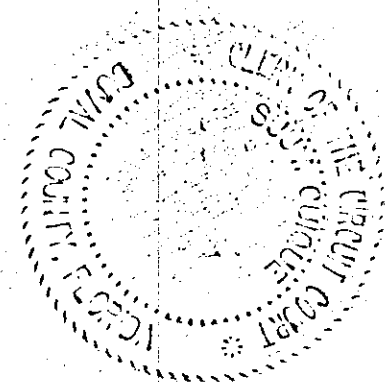
MY COMMISSION EXPIRES:

Approved 9/10/03
Date

John P. Rogers
City Engineer

for Director of Public Works
Approved 9/15/03
Date

Cheryl Cooney
for General Counsel



Prepared By:
A & J LAND SURVEYORS, INC.
Professional Land Surveyors
1450 Bellfort Parkway, Suite 1600
Jacksonville, Florida 32256
Fax (904) 246-1644
Phone (904) 246-1666 L.B. No. 6661

WHITE OAK TRAIL

Being a portion of the Northwest 1/4 of Section 8, Township 1 South, Range 26 East,
City of Jacksonville, Duval County, Florida.

APPROVED FOR RECORD

THIS IS TO CERTIFY THAT THE ABOVE PLAT HAS BEEN EXAMINED, ACCEPTED AND APPROVED BY THE CITY OF JACKSONVILLE, DUVAL COUNTY, FLORIDA, PURSUANT TO CHAPTER NO. 654, ORDINANCE CODE. THIS 13th DAY OF September, A.D., 2003.

[Signature]
DIRECTOR OF PUBLIC WORKS

CLERK'S CERTIFICATE 2003303857

THIS IS TO CERTIFY THAT THIS PLAT HAS BEEN APPROVED BY THE CITY OF JACKSONVILLE, FLORIDA AND SUBMITTED TO ME FOR THE RECORDING, AND IS RECORDED IN PLAT BOOK 56th PAGES 41A, 41B, 41C, 41D, 41E, 41F OF THE CURRENT PUBLIC RECORDS OF DUVAL COUNTY, FLORIDA THIS 19th DAY OF September, A.D., 2003.

[Signature]
JIM FULLER, CLERK OF THE CIRCUIT COURT

[Signature]
DEPUTY CLERK

PLAT CONFORMITY REVIEW

THIS PLAT HAS BEEN REVIEWED AND FOUND IN COMPLIANCE WITH PART I, CHAPTER 171, FLORIDA STATUTES, THIS 10th DAY OF September, A.D., 2003.

[Signature]
GLENN E. MCGREGOR, PLS
PROFESSIONAL LAND SURVEYOR NUMBER 4252

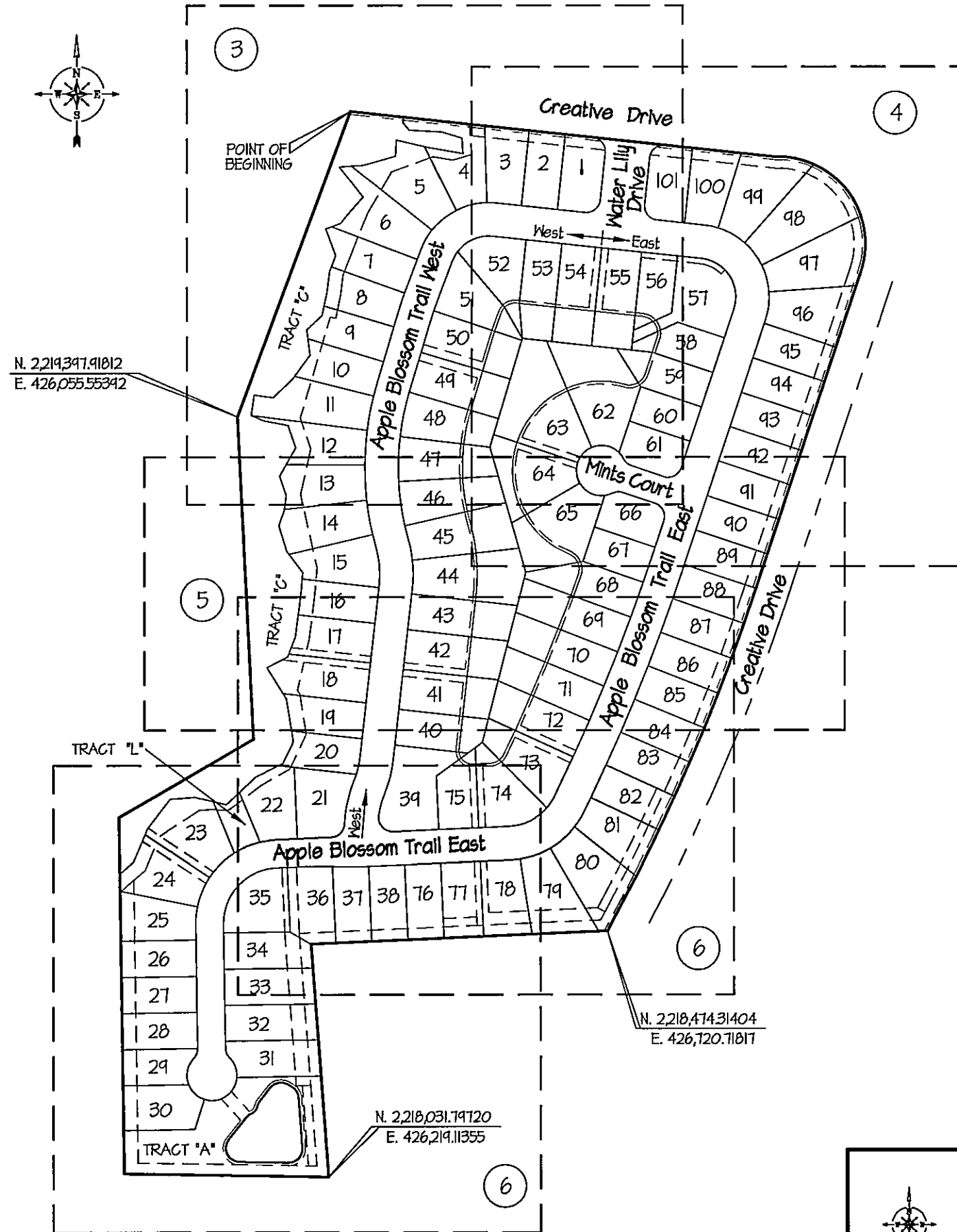
SURVEYORS CERTIFICATE

THIS IS TO CERTIFY THAT THIS PLAT IS A TRUE AND CORRECT REPRESENTATION OF THE LANDS SURVEYED, PLATTED AND DESCRIBED IN THE CAPTION, THAT THE SURVEY WAS MADE UNDER THE UNDERSIGNED'S RESPONSIBLE DIRECTION AND SUPERVISION, THAT THE SURVEY DATA COMPLIES WITH ALL THE REQUIREMENTS OF FLORIDA STATUTE 171, THAT PERMANENT REFERENCE MONUMENTS (PRM), PERMANENT CONTROL POINTS (PCP), AND LOT CORNERS HAVE BEEN OR WILL BE MONUMENTED IN ACCORDANCE WITH CHAPTER 171.041, FLORIDA STATUTES, CHAPTER 616.11-6.003, FLORIDA ADMINISTRATIVE CODE, AND SECTION 651.10, ORDINANCE CODE OF THE CITY OF JACKSONVILLE, FLORIDA. CERTIFIED THIS 11th DAY OF August, A.D., 2003.

[Signature]
GEORGE J. WARD
PROFESSIONAL LAND SURVEYOR No. 5155
1450 Belfort Parkway, Suite 1600
Jacksonville, Florida 32256

GENERAL NOTES

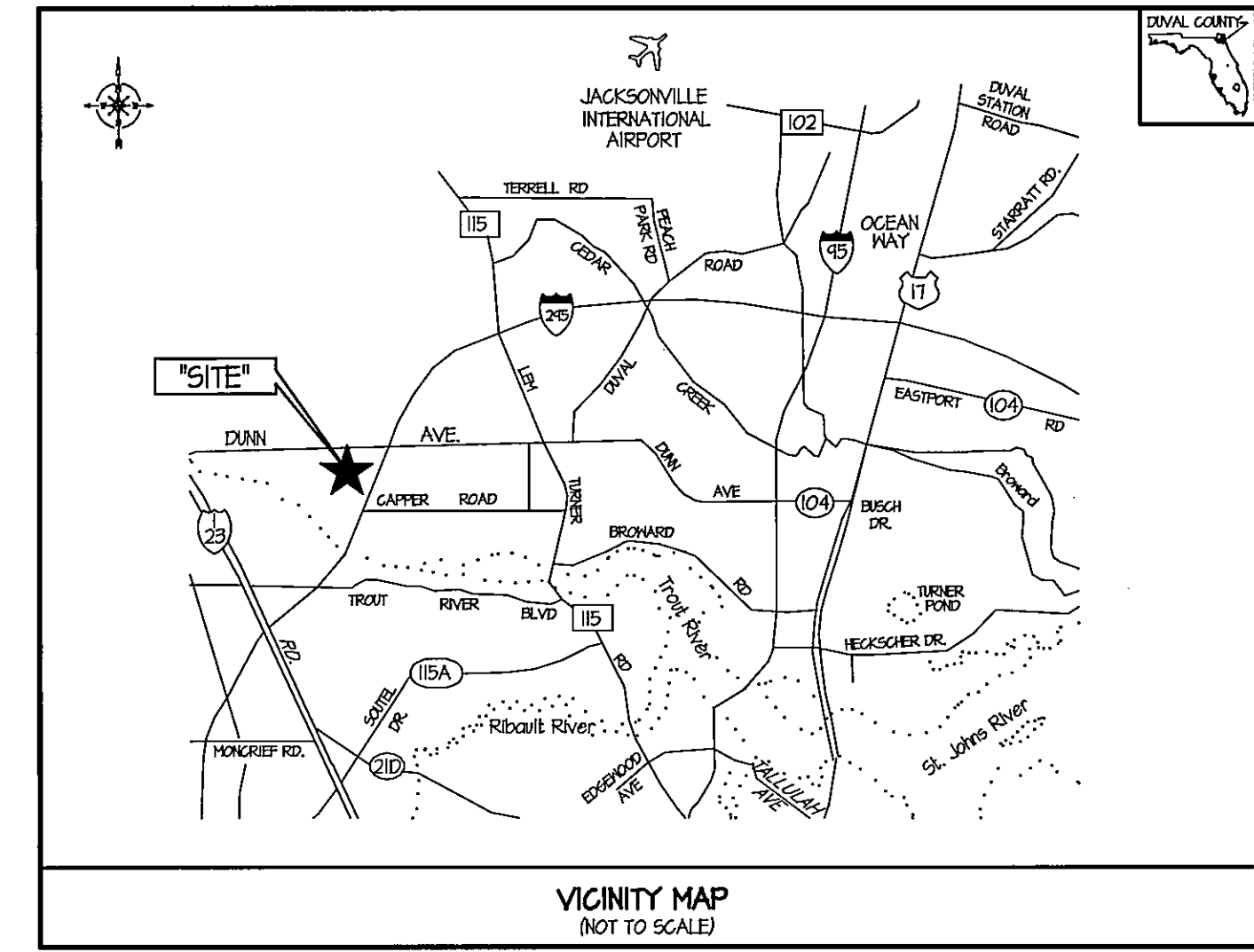
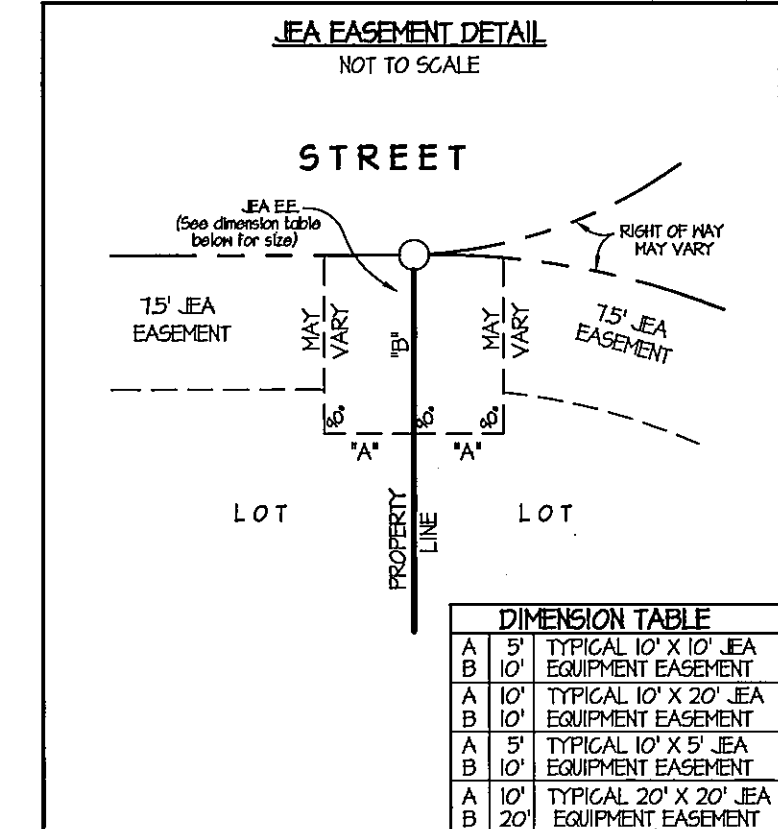
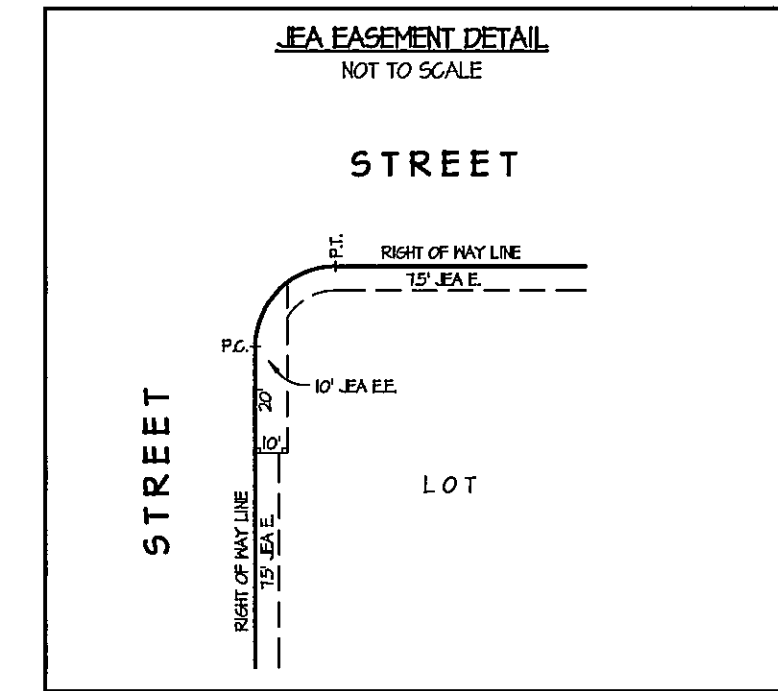
1. BASIS OF BEARING, STATE PLANE CO-ORDINATES SHOWN HEREON ARE BASED ON JEA CONTROL STATION NAME USED FOR THIS SURVEY ARE: JEA-0531 AND JEA-0530. CO-ORDINATES SHOWN ARE BASED ON NAD 83/NO STATE PLANE, FLORIDA EAST ZONE (ZONE 901) IN U.S. FEET.
2. THE EASEMENTS SHOWN HEREON AND DESIGNATED AS UNOBSTRUCTED EASEMENTS SHALL REMAIN TOTALLY UNOBSTRUCTED BY ANY PERMANENT IMPROVEMENTS WHICH MAY IMPED THE USE OF SAID EASEMENT BY THE CITY OF JACKSONVILLE. THE CONSTRUCTION OF DRIVEWAYS AND THE INSTALLATION OF FENCES, HEDGES AND LANDSCAPING IS PERMISSIBLE BUT SUBJECT TO REMOVAL BY THE CITY AT THE EXPENSE OF EACH LOT OWNER FOR THE REMOVAL AND/OR REPLACEMENT OF SUCH ITEMS.
3. THE EASEMENTS SHOWN HEREON AND DESIGNATED AS UNOBSTRUCTED ACCESS EASEMENTS SHALL REMAIN TOTALLY UNOBSTRUCTED BY ANY IMPROVEMENTS THAT MAY IMPED THE USE AND ACCESS OF SAID EASEMENTS BY THE CITY OF JACKSONVILLE.
4. EASEMENTS SHOWN HEREON ARE FOR DRAINAGE, UTILITIES AND SEWERS, UNLESS OTHERWISE NOTED.
5. ALL DRAINAGE EASEMENTS ARE UNOBSTRUCTED UNLESS OTHERWISE NOTED.
6. THE TABULATED LINE AND CURVE TABLES SHOWN ON EACH SHEET ARE APPLICABLE ONLY TO THE LINES AND CURVES THAT APPEAR ON THAT SHEET.
7. ALL PLATTED UTILITY EASEMENTS SHALL ALSO BE EASEMENTS FOR THE CONSTRUCTION, INSTALLATION, MAINTENANCE, AND OPERATION OF CABLE TELEVISION SERVICES, PROVIDED HOWEVER, NO SUCH CONSTRUCTION, INSTALLATION, MAINTENANCE, AND OPERATION OF CABLE TELEVISION SERVICES SHALL INTERFERE WITH THE FACILITIES AND SERVICES OF AN ELECTRIC, TELEPHONE, GAS, OR OTHER PUBLIC UTILITY.
8. NOTICE: THIS PLAT, AS RECORDED IN ITS GRAPHIC FORM, IS THE OFFICIAL DEPICTION OF THE SUBDIVIDED LANDS DESCRIBED HEREIN AND WILL IN NO CIRCUMSTANCES BE SUPPLANTED IN AUTHORITY BY ANY OTHER GRAPHIC OR DIGITAL FORM OF THE PLAT, WHETHER GRAPHIC OR DIGITAL. THERE MAY BE ADDITIONAL RESTRICTIONS NOT RECORDED ON THIS PLAT THAT MAY BE FOUND IN THE PUBLIC RECORDS OF DUVAL COUNTY, FLORIDA.
9. CERTAIN EASEMENTS ARE RESERVED FOR JEA FOR USE IN CONJUNCTION WITH THE UNDERGROUND DISTRIBUTION SYSTEM.
10. "JEA E.E." DENOTES JEA EQUIPMENT EASEMENT. THESE EASEMENTS SHALL REMAIN TOTALLY UNOBSTRUCTED BY ANY IMPROVEMENTS THAT MAY IMPED THE USE AND ACCESS OF SAID EASEMENT BY JEA.
11. "JEA E." DENOTES JEA EASEMENT. JEA WILL ALLOW CERTAIN NON-PERMANENT IMPROVEMENTS WHICH DO NOT IMPED THE USE OF SAID EASEMENTS BY JEA. THE INSTALLATION OF FENCES, HEDGES, AND LANDSCAPING IS PERMISSIBLE BUT SUBJECT TO REMOVAL BY JEA AT THE EXPENSE OF EACH LOT OWNER FOR THE REMOVAL AND FOR REPLACEMENT OF SUCH ITEMS.
12. (100.00') DENOTES DISTANCE TO EASEMENTS OR UPLAND BUFFERS.
13. BY GRAPHIC PLOTTING ONLY, THE PROPERTY SHOWN HEREON LIES WITHIN ZONES "X" (UNSHADED) & "A", AS SHOWN ON THE FEDERAL EMERGENCY MANAGEMENT AGENCY (F.E.M.A.), NATIONAL FLOOD INSURANCE PROGRAM, FLOOD INSURANCE RATE MAP (F.I.R.M.) COMMUNITY PANEL NUMBER: 120071 - 0065 E; MAP REVISED DATE: AUGUST 15, 1994. A "LOMAR" LETTER OF MAP REVISION HAS BEEN APPLIED FOR.



KEY MAP
NOT TO SCALE

LEGEND

ESMT.	EASEMENT
O.R. VOL.	OFFICIAL RECORDS VOLUME
Pg.	PAGE
(OA)	OVERALL
P.C.	POINT OF CURVATURE
P.T.	POINT OF TANGENCY
P.R.C.	POINT OF REVERSE CURVE
R.P.	RADIUS POINT
P.I.	POINT OF INTERSECTION
P.C.C.	POINT OF COMPOUND CURVE
R.	RADIUS
L.	ARC LENGTH
CH.	CHORD DISTANCE
CA	TABULATED CURVE DATA
V.N.B.	VEGETATED NATURAL BUFFER
R/W	RIGHT OF WAY
○	DENOTES PERMANENT REFERENCE MONUMENT SET (L.B. NO. 6661)
○	DENOTES PERMANENT CONTROL POINT SET (L.B. NO. 6661)
I	STREET NAME CHANGE



Prepared By:
A & J LAND SURVEYORS, INC.
Professional Land Surveyors
1450 Belfort Parkway, Suite 1600
Jacksonville, Florida 32256
Fax (904) 246-1644
Phone (904) 246-1666 L.B. No. 6661

WHITE OAK TRAIL

Being a portion of the Northwest 1/4 of Section 8, Township 1 South, Range 26 East,
City of Jacksonville, Duval County, Florida.

GRAPHIC SCALE

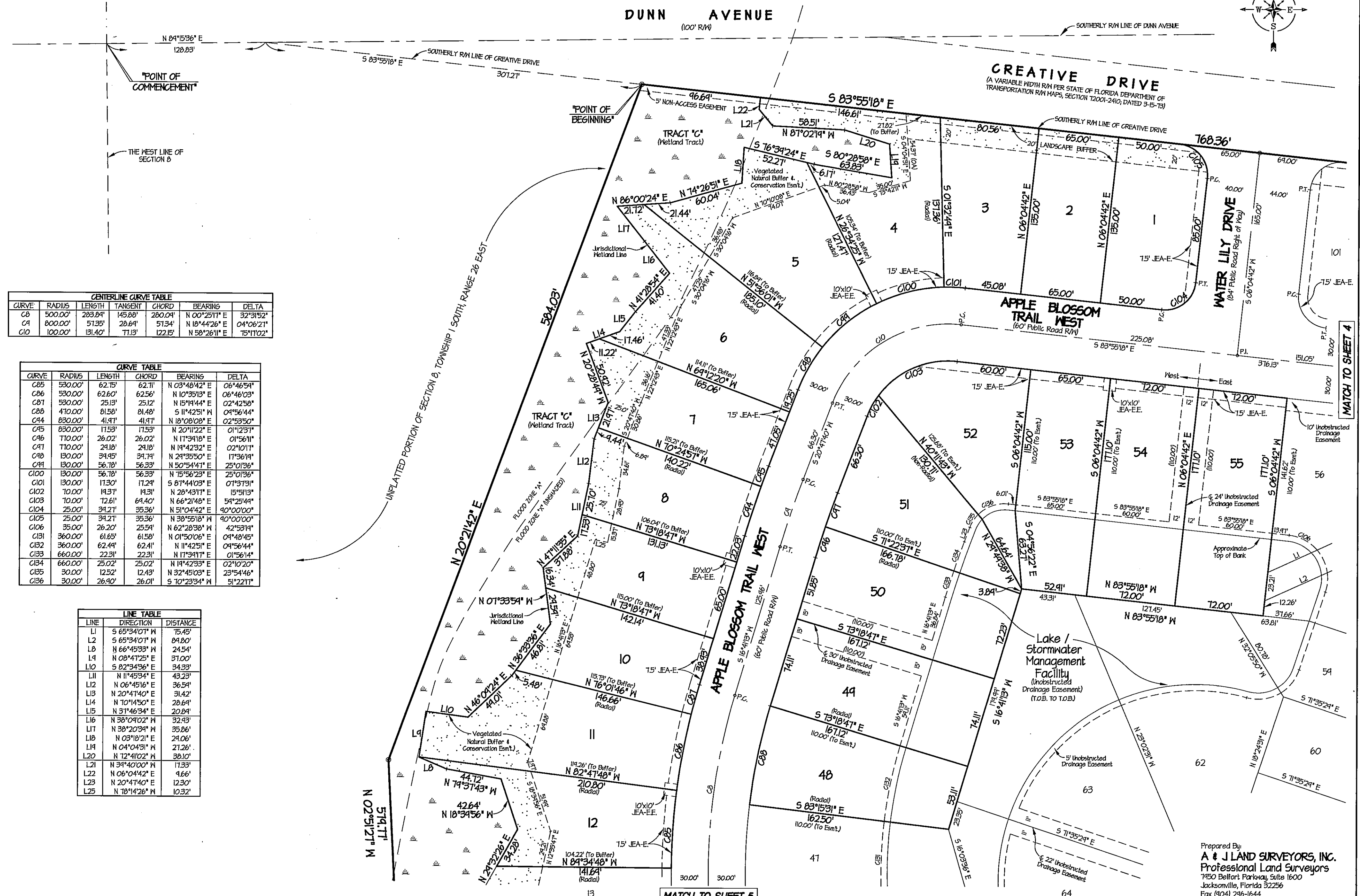
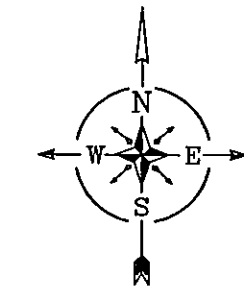


(IN FEET)
1 inch = 50 ft.

PLAT BOOK 56 PAGE 41B

SHEET 3 OF 7 SHEETS

SEE SHEET 2 FOR GENERAL NOTES



CURVE	RADIUS	LENGTH	TANGENT	CHORD	BEARING	DELTA
C8	500.00'	283.84'	145.88'	280.04'	N 00°28'11" E	32°31'52"
C4	800.00'	51.35'	28.64'	51.34'	N 18°44'26" E	04°06'21"
C10	100.00'	131.40'	11.13'	122.15'	N 58°26'11" E	15°11'02"

CURVE	RADIUS	LENGTH	CHORD	BEARING	DELTA
C85	530.00'	62.75'	62.71'	N 03°48'42" E	06°46'54"
C86	530.00'	62.60'	62.56'	N 10°35'13" E	06°46'03"
C87	530.00'	25.13'	25.12'	N 15°14'44" E	02°42'58"
C88	410.00'	81.58'	81.48'	S 11°42'51" W	04°56'44"
C44	830.00'	41.41'	41.41'	N 18°08'08" E	02°53'50"
C45	830.00'	17.53'	17.53'	N 20°11'22" E	01°12'37"
C46	710.00'	26.02'	26.02'	N 17°34'18" E	01°56'11"
C47	710.00'	24.18'	24.18'	N 14°42'32" E	02°10'17"
C48	130.00'	34.45'	34.74'	N 24°35'50" E	11°36'14"
C49	130.00'	56.78'	56.33'	N 50°54'41" E	25°01'36"
C100	130.00'	56.78'	56.33'	N 75°56'23" E	25°01'36"
C101	130.00'	11.30'	11.24'	S 87°44'03" E	01°31'31"
C102	70.00'	14.31'	14.31'	N 28°43'17" E	15°51'33"
C103	70.00'	12.61'	64.40'	N 66°21'48" E	54°25'44"
C104	25.00'	34.27'	35.36'	N 31°04'42" E	40°00'00"
C105	25.00'	34.27'	35.36'	N 38°55'18" N	40°00'00"
C106	35.00'	26.20'	25.54'	N 62°28'38" N	42°53'11"
C131	360.00'	61.65'	61.58'	N 01°50'06" E	04°48'45"
C132	360.00'	62.44'	62.41'	N 11°42'55" E	04°56'44"
C133	660.00'	22.31'	22.31'	N 17°34'11" E	01°56'14"
C134	660.00'	25.02'	25.02'	N 14°42'33" E	02°10'20"
C135	30.00'	12.52'	12.43'	N 32°45'03" E	23°54'46"
C136	30.00'	26.40'	26.01'	S 70°23'34" W	51°22'11"

LINE	DIRECTION	DISTANCE
L1	S 65°34'07" W	75.45'
L2	S 65°34'07" W	84.80'
L8	N 66°45'33" W	24.54'
L4	N 68°41'25" E	37.00'
L10	S 82°34'36" E	34.33'
L11	N 11°45'34" E	43.23'
L12	N 06°45'16" E	36.54'
L13	N 20°41'40" E	31.42'
L14	N 10°44'50" E	28.64'
L15	N 31°46'34" E	20.84'
L16	N 38°04'02" W	32.43'
L17	N 38°20'34" W	35.86'
L18	N 03°18'21" E	24.06'
L14	N 04°04'31" E	21.26'
L20	N 12°41'02" W	38.10'
L21	N 34°40'00" W	11.33'
L22	N 06°04'42" E	4.66'
L23	N 20°41'40" E	12.30'
L25	N 18°14'26" W	10.32'

Prepared By:
A & J LAND SURVEYORS, INC.
Professional Land Surveyors
1450 Bellfort Parkway, Suite 1600
Jacksonville, Florida 32256
Fax (904) 246-1644
Phone (904) 246-1666
L.B. No. 6661

WHITE OAK TRAIL

Being a portion of the Northwest 1/4 of Section 8, Township 1 South, Range 26 East,
City of Jacksonville, Duval County, Florida.

GRAPHIC SCALE

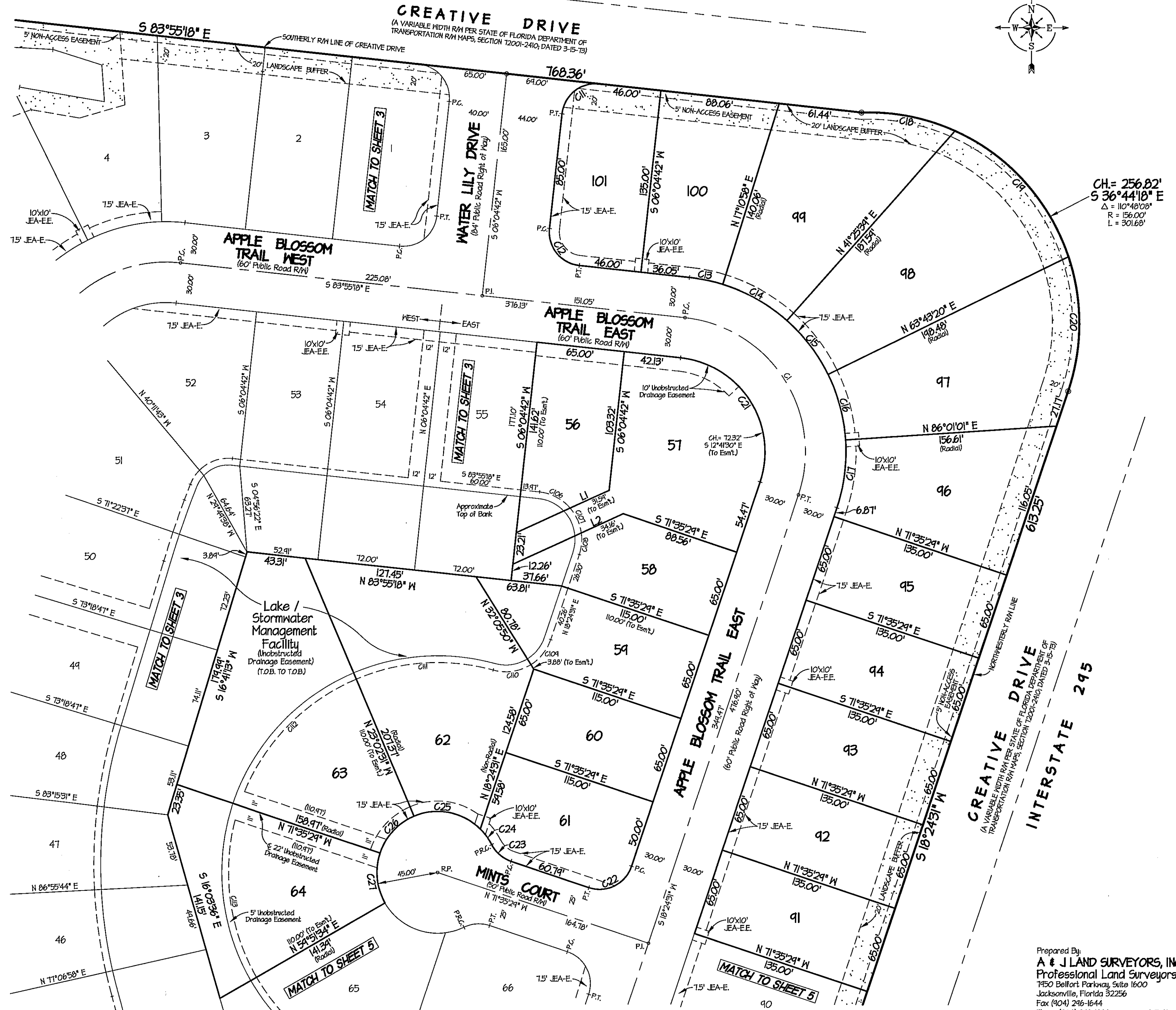
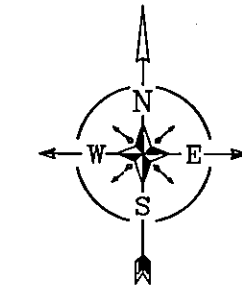


(IN FEET)
1 inch = 50 ft.

PLAT BOOK 56 PAGE 41C

SHEET 4 OF 7 SHEETS

SEE SHEET 2 FOR GENERAL NOTES



LINE	DIRECTION	DISTANCE
L1	S 65°34'01" W	75.45'
L2	S 65°34'01" W	84.80'

CURVE	RADIUS	LENGTH	TANGENT	CHORD	BEARING	DELTA
C1	100.00'	178.60'	124.22'	155.14'	S 32°45'23" E	102°19'44"

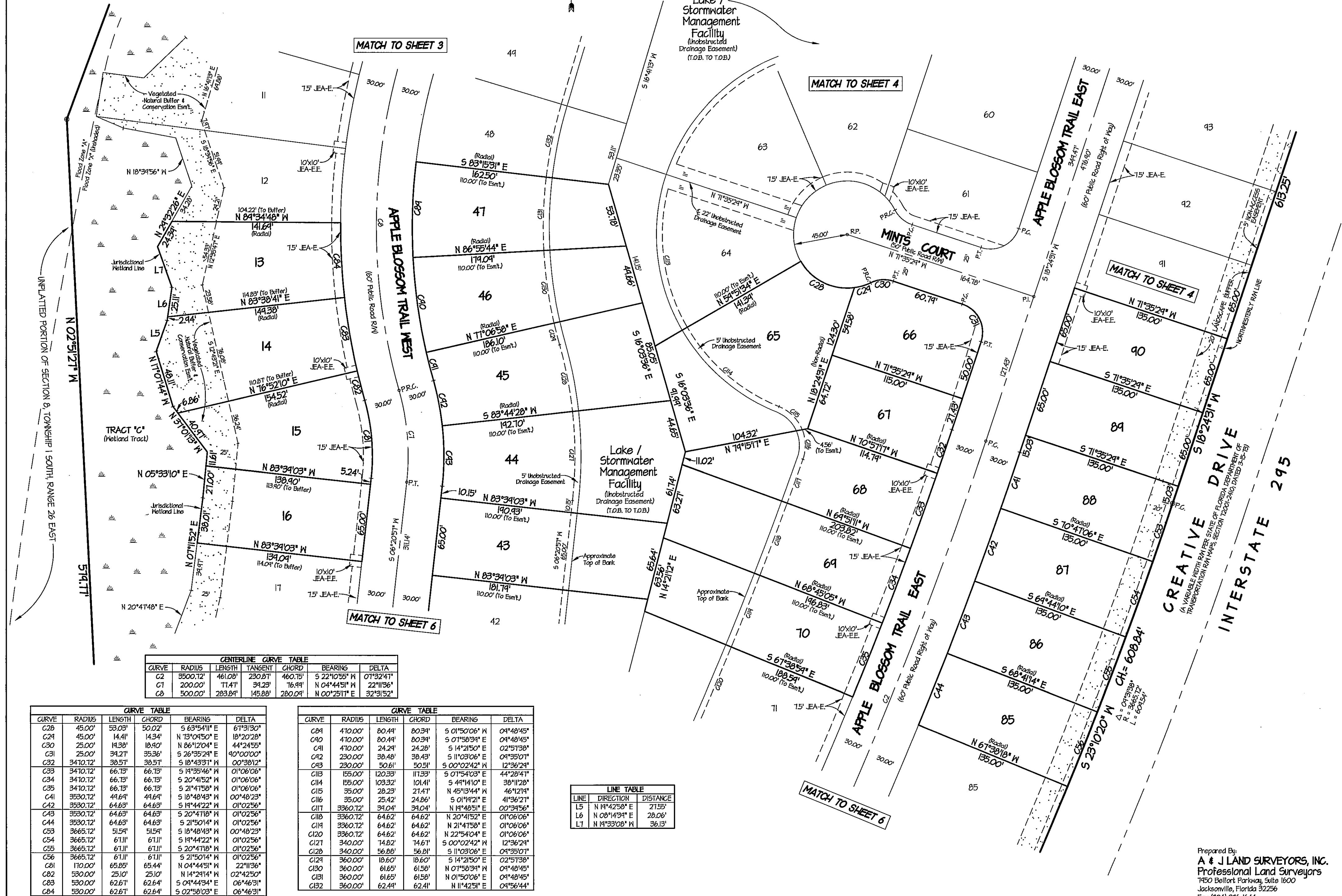
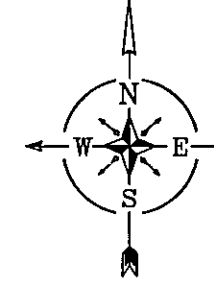
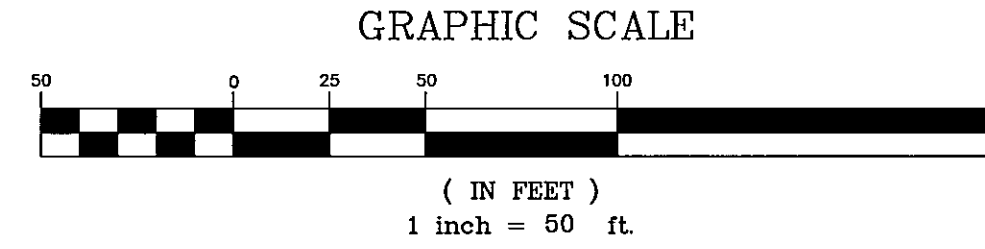
CURVE	RADIUS	LENGTH	CHORD	BEARING	DELTA
C1	100.00'	178.60'	155.14'	S 32°45'23" E	102°19'44"
C11	25.00'	34.21'	35.36'	N 51°04'42" E	40°00'00"
C12	25.00'	34.21'	35.36'	S 38°55'18" E	40°00'00"
C13	130.00'	25.20'	25.16'	S 78°22'10" E	11°06'16"
C14	130.00'	55.01'	54.60'	S 60°41'41" E	24°14'41"
C15	130.00'	50.54'	50.27'	S 31°25'30" E	22°11'41"
C16	130.00'	50.54'	50.27'	S 15°07'44" E	22°11'41"
C17	130.00'	50.80'	50.48'	N 07°12'46" E	22°23'30"
C18	156.00'	71.16'	70.54'	S 14°04'20" E	26°08'04"
C19	156.00'	124.01'	125.36'	S 42°18'52" E	41°22'53"
C20	156.00'	101.52'	44.14'	S 00°01'10" W	31°11'10"
C21	70.00'	125.02'	104.05'	S 32°45'23" E	102°19'44"
C22	25.00'	34.21'	35.36'	S 63°24'31" N	40°00'00"
C23	25.00'	14.38'	14.40'	N 44°23'01" N	44°24'55"
C24	45.00'	14.41'	14.34'	N 36°20'48" N	18°20'28"
C25	45.00'	53.03'	50.02'	N 14°16'46" N	61°31'30"
C26	45.00'	38.13'	31.00'	S 42°41'00" E	48°32'51"
C27	45.00'	38.13'	31.00'	S 05°51'51" E	48°32'51"
C106	35.00'	26.20'	25.54'	N 62°28'38" N	42°53'14"
C107	35.00'	20.28'	20.00'	S 24°25'53" E	33°12'11"
C108	35.00'	16.03'	15.84'	N 05°11'22" E	26°14'18"
C109	35.00'	24.14'	23.67'	S 38°08'21" E	34°31'21"
C110	35.00'	28.47'	28.15'	N 81°36'50" N	41°25'20"
C111	155.00'	103.71'	101.86'	N 86°08'24" E	38°22'01"
C112	155.00'	120.33'	117.33'	N 44°43'05" E	44°28'47"
C113	155.00'	120.33'	117.33'	S 07°54'03" E	44°28'47"

Prepared By:
A & J LAND SURVEYORS, INC.
Professional Land Surveyors
1450 Belfort Parkway, Suite 1600
Jacksonville, Florida 32256
Fax (904) 246-1644
Phone (904) 246-1666

L.B. No. 6661

WHITE OAK TRAIL

Being a portion of the Northwest 1/4 of Section 8, Township 1 South, Range 26 East, City of Jacksonville, Duval County, Florida.



CURVE	RADIUS	LENGTH	TANGENT	CHORD	BEARING	DELTA
C2	3500.12'	461.08'	230.81'	460.15'	S 22°10'55" E	07°32'41"
C7	200.00'	71.41'	34.23'	16.94'	N 04°44'51" E	22°11'36"
C8	500.00'	283.84'	145.88'	280.04'	N 00°23'11" E	32°31'52"

CURVE	RADIUS	LENGTH	CHORD	BEARING	DELTA
C2B	45.00'	53.03'	50.02'	S 63°54'11" E	61°31'30"
C2A	45.00'	14.41'	14.34'	N 13°04'50" E	18°20'28"
C30	25.00'	113.30'	18.40'	N 86°12'04" E	44°24'55"
C31	25.00'	34.21'	35.36'	S 26°35'24" E	90°00'00"
C32	3470.12'	38.51'	38.51'	S 18°43'31" E	00°38'12"
C33	3470.12'	66.73'	66.73'	S 14°35'46" E	01°06'08"
C34	3470.12'	66.73'	66.73'	S 20°41'52" E	01°06'08"
C35	3470.12'	66.73'	66.73'	S 21°41'58" E	01°06'08"
C41	3530.12'	44.64'	44.64'	S 18°48'43" E	00°48'23"
C42	3530.12'	64.63'	64.63'	S 14°42'22" E	01°02'56"
C43	3530.12'	64.63'	64.63'	S 20°41'18" E	01°02'56"
C44	3530.12'	64.63'	64.63'	S 21°50'14" E	01°02'56"
C53	3665.12'	51.54'	51.54'	S 18°48'43" E	00°48'23"
C54	3665.12'	61.11'	61.11'	S 14°42'22" E	01°02'56"
C55	3665.12'	61.11'	61.11'	S 20°41'18" E	01°02'56"
C56	3665.12'	61.11'	61.11'	S 21°50'14" E	01°02'56"
C81	110.00'	65.85'	65.44'	N 04°44'51" E	22°11'36"
C82	530.00'	25.10'	25.10'	N 14°21'14" E	02°42'50"
C83	530.00'	62.61'	62.64'	S 04°44'34" E	06°46'31"
C84	530.00'	62.61'	62.64'	S 02°58'03" E	06°46'31"

CURVE	RADIUS	LENGTH	CHORD	BEARING	DELTA
C8A	410.00'	80.44'	80.34'	S 01°50'06" E	04°48'45"
C80	410.00'	80.44'	80.34'	S 01°58'34" E	04°48'45"
C81	410.00'	24.24'	24.28'	S 14°21'50" E	02°51'38"
C42	230.00'	38.48'	38.43'	S 11°03'06" E	04°35'01"
C43	230.00'	50.61'	50.51'	S 00°02'42" E	12°36'24"
C13	155.00'	120.33'	111.33'	S 01°54'03" E	44°28'41"
C14	155.00'	103.32'	101.41'	S 44°14'10" E	38°11'28"
C15	35.00'	28.23'	21.41'	N 45°13'44" E	46°12'19"
C16	35.00'	25.42'	24.86'	S 01°14'21" E	41°36'21"
C17	3360.12'	34.04'	34.04'	N 14°48'51" E	00°34'56"
C18	3360.12'	64.62'	64.62'	N 20°41'52" E	01°06'08"
C19	3360.12'	64.62'	64.62'	N 21°41'58" E	01°06'08"
C20	3360.12'	64.62'	64.62'	N 22°54'04" E	01°06'08"
C121	340.00'	74.82'	74.61'	S 00°02'42" E	12°36'24"
C122	340.00'	56.88'	56.81'	S 11°03'06" E	04°35'01"
C123	360.00'	18.60'	18.60'	S 14°21'50" E	02°51'38"
C130	360.00'	61.63'	61.58'	N 01°50'06" E	04°48'45"
C131	360.00'	61.63'	61.58'	N 01°50'06" E	04°48'45"
C132	360.00'	62.44'	62.41'	N 11°42'51" E	04°56'44"

LINE	DIRECTION	DISTANCE
L5	N 14°42'58" E	21.55'
L6	N 08°14'34" E	28.06'
L7	N 14°33'08" E	36.13'

Prepared By:
A & J LAND SURVEYORS, INC.
 Professional Land Surveyors
 1450 Balford Parkway, Suite 1600
 Jacksonville, Florida 32256
 Fax (904) 246-1644
 Phone (904) 246-1666

WHITE OAK TRAIL

Being a portion of the Northwest 1/4 of Section 8, Township 1 South, Range 26 East,
City of Jacksonville, Duval County, Florida.

GRAPHIC SCALE

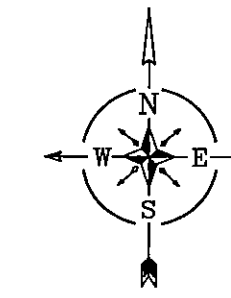


(IN FEET)
1 inch = 50 ft.

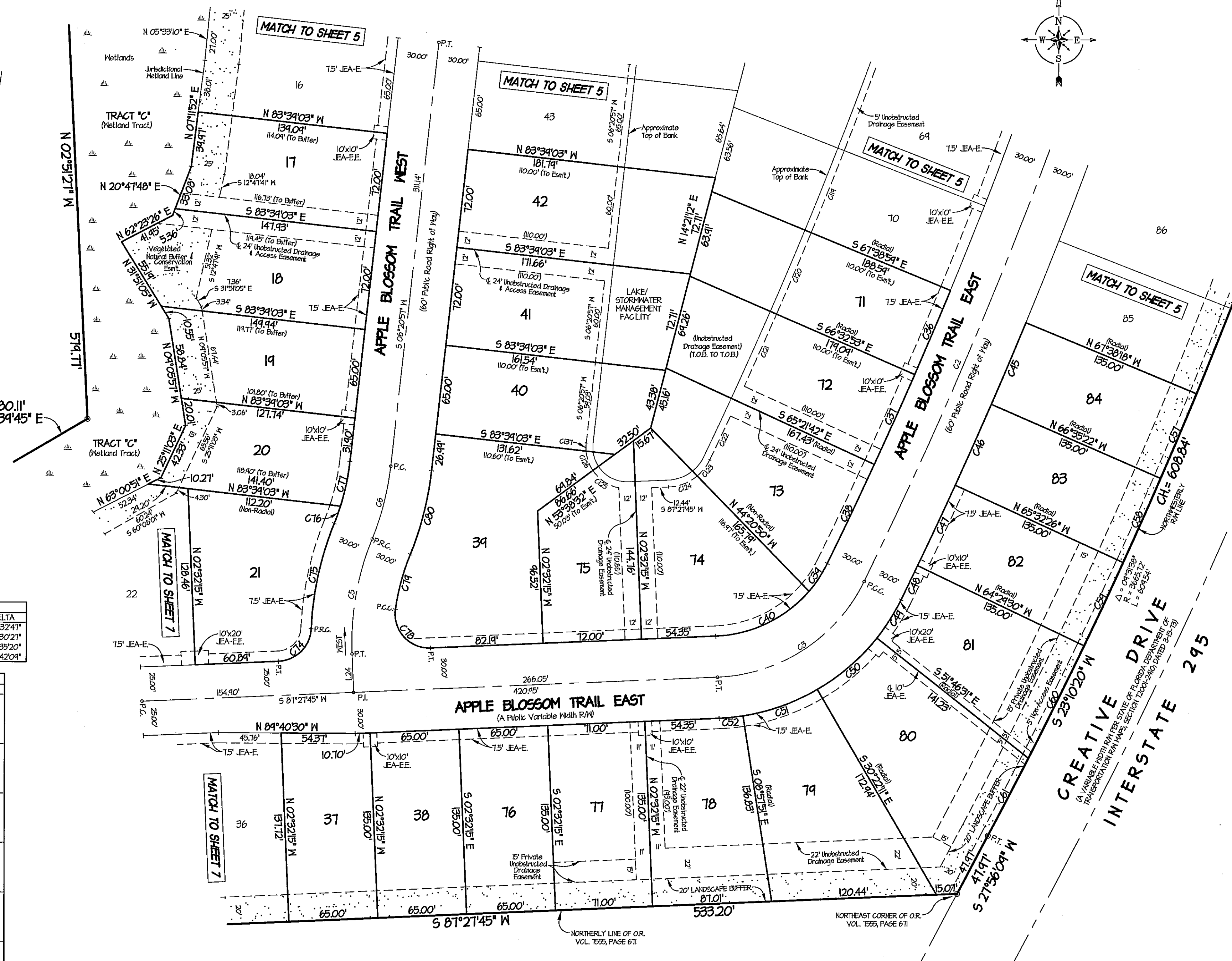
PLAT BOOK 56 PAGE 41E

SHEET 6 OF 7 SHEETS

SEE SHEET 2 FOR GENERAL NOTES



UNPLATTED PORTION OF SECTION 8,
TOWNSHIP 1 SOUTH, RANGE 26 EAST



LINE	DIRECTION	DISTANCE
L24	N 02°32'15" W	28.15'

CENTERLINE CURVE TABLE						
CURVE	RADIUS	LENGTH	TANGENT	CHORD	BEARING	DELTA
C2	3500.72'	461.08'	230.81'	460.75'	S 22°10'55" W	07°32'41"
C3	125.00'	134.19'	14.38'	127.84'	S 56°42'32" E	61°30'21"
C5	200.00'	85.83'	43.54'	85.17'	N 04°45'25" E	24°35'20"
C6	200.00'	54.81'	27.58'	54.64'	N 14°12'01" E	15°42'04"

CURVE TABLE				
CURVE	RADIUS	LENGTH	BEARING	DELTA
C36	3470.72'	66.73'	S 22°54'04" W	01°06'06"
C37	3470.72'	71.86'	S 24°02'42" W	01°11'11"
C38	3470.72'	74.71'	S 25°11'48" W	01°14'01"
C39	45.00'	24.41'	S 33°20'01" W	14°45'25"
C40	45.00'	71.52'	S 64°05'14" W	46°45'01"
C45	3530.72'	64.63'	S 22°53'10" W	01°02'56"
C46	3530.72'	64.63'	S 23°56'06" W	01°02'56"
C47	3530.72'	64.63'	S 24°54'02" W	01°02'56"
C48	3530.72'	27.54'	S 25°43'54" W	00°26'44"
C49	155.00'	33.19'	S 32°05'24" W	12°16'11"
C50	155.00'	57.91'	S 48°55'34" W	21°24'20"
C51	155.00'	57.91'	S 70°18'54" W	21°24'20"
C52	155.00'	113.94'	S 84°14'51" W	06°25'36"
C57	3665.72'	67.11'	S 22°53'10" W	01°02'56"
C58	3665.72'	67.11'	S 23°56'06" W	01°02'56"
C59	3665.72'	67.11'	S 24°54'02" W	01°02'56"
C60	3665.72'	41.55'	S 26°13'25" W	01°25'51"
C61	3665.72'	63.79'	S 27°26'15" W	00°58'54"
C74	25.00'	31.13'	N 44°55'13" E	85°05'03"
C75	230.00'	78.91'	N 12°12'54" E	14°40'24"
C76	170.00'	13.27'	N 14°48'53" E	04°28'25"
C77	170.00'	33.32'	N 11°51'44" E	11°13'43"
C78	25.00'	43.43'	N 42°12'06" E	100°40'18"
C79	170.00'	41.24'	N 15°05'34" E	13°55'03"
C80	230.00'	63.03'	N 14°12'01" E	15°42'04"
C119	3360.72'	64.62'	N 21°41'58" E	01°06'06"
C120	3360.72'	64.62'	N 22°54'04" E	01°06'06"
C121	3360.72'	57.54'	N 23°56'34" E	00°58'54"
C122	3360.72'	35.25'	N 25°08'36" E	00°36'04"
C123	35.00'	15.21'	N 31°53'40" E	24°54'05"
C124	35.00'	22.67'	N 68°54'14" E	37°07'02"
C125	30.00'	23.42'	S 56°14'44" E	44°43'14"
C126	30.00'	15.05'	S 14°30'40" E	28°45'03"
C131	30.00'	6.01'	S 00°36'24" W	11°24'06"

UNPLATTED PORTION OF SECTION 8, TOWNSHIP 1 SOUTH, RANGE 26 EAST

OFFICIAL RECORDS VOLUME 1555, PAGE 671

CREATIVE DRIVE
INTERSTATE 295

Prepared By:
A & J LAND SURVEYORS, INC.
Professional Land Surveyors
7450 Belfort Parkway, Suite 1600
Jacksonville, Florida 32256
Fax (904) 246-1644
Phone (904) 246-1666
L.B. No. 6661

WHITE OAK TRAIL

Being a portion of the Northwest 1/4 of Section 8, Township 1 South, Range 26 East,
City of Jacksonville, Duval County, Florida.

PLAT BOOK 56 PAGE 41F

SHEET 1 OF 1 SHEETS

SEE SHEET 2 FOR GENERAL NOTES

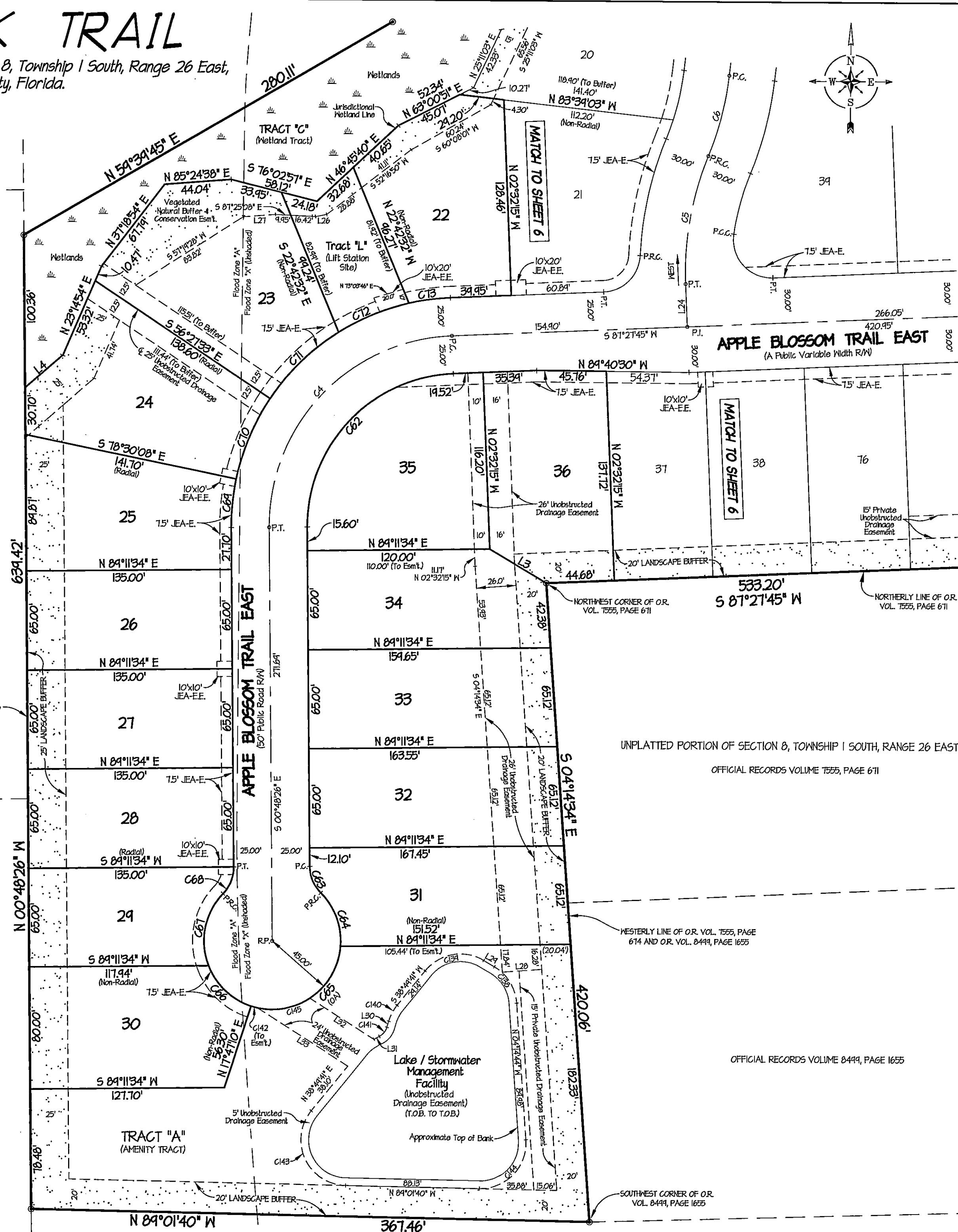
GRAPHIC SCALE



(IN FEET)
1 inch = 50 ft.

O.R.VOL. 8175, PAGE 641

UNPLATTED PORTION OF SECTION 7,
TOWNSHIP 1 SOUTH, RANGE 26 EAST



LINE TABLE

LINE	DIRECTION	DISTANCE
L3	S 54°21'33" E	43.50'
L4	N 48°47'04" E	32.82'
L24	N 02°32'15" W	28.15'
L26	S 74°32'24" W	7.43'
L27	S 85°24'38" W	21.34'
L28	S 85°45'16" W	26.00'
L24	N 54°34'38" W	8.20'
L30	S 16°12'30" W	4.11'
L31	S 61°26'53" W	4.21'
L32	N 57°40'48" W	50.07'
L33	N 57°40'48" W	10.54'

CENTERLINE CURVE TABLE

CURVE	RADIUS	LENGTH	TANGENT	CHORD	BEARING	DELTA
C4	125.00'	142.57'	121.28'	174.09'	S 43°19'40" W	88°16'11"
C5	200.00'	85.83'	43.54'	85.17'	N 04°45'25" E	24°35'20"
C6	200.00'	54.81'	27.58'	54.64'	N 14°12'01" E	15°42'04"

CURVE TABLE

CURVE	RADIUS	LENGTH	CHORD	BEARING	DELTA
C62	100.00'	154.06'	134.27'	S 43°19'40" W	88°16'11"
C63	25.00'	14.38'	18.40'	S 23°00'53" E	44°24'55"
C64	45.00'	38.14'	37.60'	S 20°31'31" E	44°23'38"
C65	45.00'	81.38'	70.73'	S 55°58'44" W	103°36'52"
C66	45.00'	34.71'	38.44'	N 46°55'52" W	50°33'55"
C67	45.00'	51.25'	48.53'	N 10°58'48" E	65°15'24"
C68	25.00'	14.38'	18.40'	N 21°24'02" E	44°24'55"
C69	150.00'	32.21'	32.21'	N 05°20'43" E	121°01'08"
C70	150.00'	57.71'	57.35'	N 22°31'01" E	22°02'54"
C71	150.00'	63.24'	62.71'	N 45°37'08" E	24°04'23"
C72	150.00'	50.23'	50.00'	N 67°11'28" E	14°11'17"
C73	150.00'	21.64'	21.65'	N 82°10'26" E	10°34'38"
C138	30.00'	24.01'	27.84'	N 31°54'41" W	55°24'14"
C139	30.00'	42.74'	34.21'	S 74°37'32" W	81°31'01"
C140	30.00'	11.88'	11.80'	S 27°31'05" W	22°41'33"
C141	10.00'	7.40'	7.64'	S 38°44'41" W	45°14'23"
C142	45.00'	4.58'	4.58'	S 75°07'48" W	05°44'56"
C143	30.00'	66.48'	53.41'	S 25°05'54" E	127°54'51"
C144	30.00'	44.86'	44.31'	N 43°21'48" E	85°13'04"
C145	45.00'	35.47'	35.02'	N 74°03'22" E	45°47'45"

Prepared By:
A & J LAND SURVEYORS, INC.
Professional Land Surveyors
7850 Bellfort Parkway, Suite 1600
Jacksonville, Florida 32256
Fax (904) 246-1644
Phone (904) 246-1666
L.B. No. 6661